

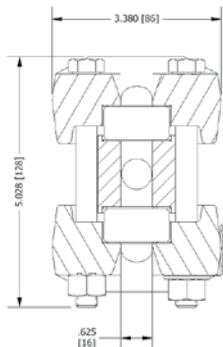
TRANSPARENT FLAT GLASS GAUGES

FOR STEAM** OR LIQUID LEVEL

1/2" NPT Both Ends
(3/4" optional)

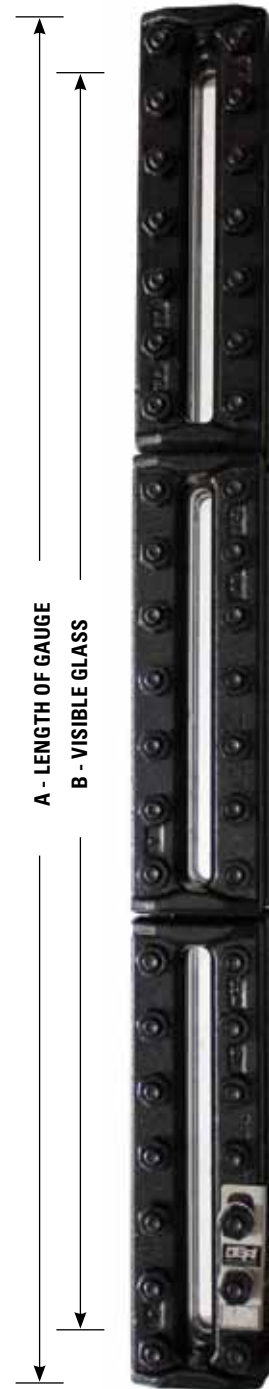
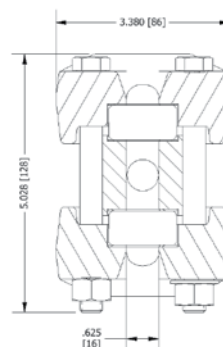
MODEL EFI ST

- For Liquid Level
1000 to 2000 PSI @ 100°F
675 to 1350 PSI @ 600°F
- **MICA-Protected saturated
steam rating
350 to 600 WSP
- Chamber: Steel
- Cover: Forged Steel
- Fasteners: Alloy Steel



MODEL EFI WT

- For Liquid Level
4000 PSI @ 100°F
3080 PSI @ 600°F
- **MICA-Protected saturated
steam rating
750 WSP
- Chamber: Steel
- Cover: Forged Steel
- Fasteners: Alloy Steel



MODEL EFI ST

Section X Size	A Length of Gauge	B Length of Visual Glass	GAUGE MODEL	Approx. Weight (lbs.)	GAUGE MODEL	Approx. Weight (lbs.)
SINGLE SECTION GAUGE INSERT						
11	5-1/4"	3-3/4"	EFI ST-1200J	13	EFI WT-10J	13
12	6-1/4"	4-3/4"	EFI ST-1201J	15	EFI WT-11J	15
13	7-1/4"	5-3/4"	EFI ST-1202J	17	EFI WT-12J	17
14	8-1/4"	6-3/4"	EFI ST-1203J	20	EFI WT-13J	20
15	9-3/8"	7-7/8"	EFI ST-1204J	22	EFI WT-14J	22
16	10-5/8"	9-1/8"	EFI ST-1205J	25	EFI WT-15J	25
17	11-3/4"	10-1/4"	EFI ST-1206J	28	EFI WT-16J	28
18	13-3/8"	11-7/8"	EFI ST-1207J	31	EFI WT-17J	31
19	14-1/8"	12-5/8"	EFI ST-1208J	33	EFI WT-18J	33
TWO SECTION GAUGE INSERT						
24	16-1/2"	15"	EFI ST-1223J	40	EFI WT-23J	40
25	18-3/4"	17-1/4"	EFI ST-1224J	44	EFI WT-24J	44
26	21-1/4"	19-3/4"	EFI ST-1225J	50	EFI WT-25J	50
27	23-1/2"	22"	EFI ST-1226J	56	EFI WT-26J	56
28	26-3/4"	25-1/4"	EFI ST-1227J	63	EFI WT-27J	63
29	28-1/4"	26-3/4"	EFI ST-1228J	66	EFI WT-28J	66
THREE SECTION GAUGE INSERT						
36	31-7/8"	30-3/8"	EFI ST-1245J	76	EFI WT-35J	76
37	35-1/4"	33-3/4"	EFI ST-1246J	84	EFI WT-36J	84
38	40-1/8"	38-5/8"	EFI ST-1247J	94	EFI WT-37J	94
39	42-3/8"	40-7/8"	EFI ST-1248J	99	EFI WT-38J	99
FOUR SECTION GAUGE INSERT						
47	47"	45-1/2"	EFI ST-1266J	112	EFI WT-46J	112
48	53-1/2"	52"	EFI ST-1267J	126	EFI WT-47J	126
49	56-1/2"	55"	EFI ST-1268J	133	EFI WT-48J	133
FIVE SECTION GAUGE INSERT						
57	58-3/4"	57-1/4"	EFI ST-56J	140	EFI WT-56J	140
58	66-7/8"	65-3/8"	EFI ST-57J	158	EFI WT-57J	158
59	70-5/8"	69-1/8"	EFI ST-58J	166	EFI WT-58J	166

VISIBLE LENGTHS UP TO 125-5/8" ARE AVAILABLE...consult with Ernst Flow Industries.

Steel valves for use with Clear Flat Gauges are illustrated on page 17.

NOTE: For Model EFI WT, our Models EFI 66-H, 66-L, 67-H and 67-L steel gauge valve sets are required. (not shown in catalog; contact Ernst Flow Industries for details).

Replacement Glass and Gaskets are illustrated on page 13.

**WARNING: Specify if insert gauge is to be used for steam service. Mica shields are required for all steam applications.

For use with PROCESS SATURATED STEAM APPLICATIONS ONLY. EFI Clear Flat Insert Glass Gauges ARE NOT TO BE USED WITH SUPERHEATED STEAM.