

SIGHT WINDOWS

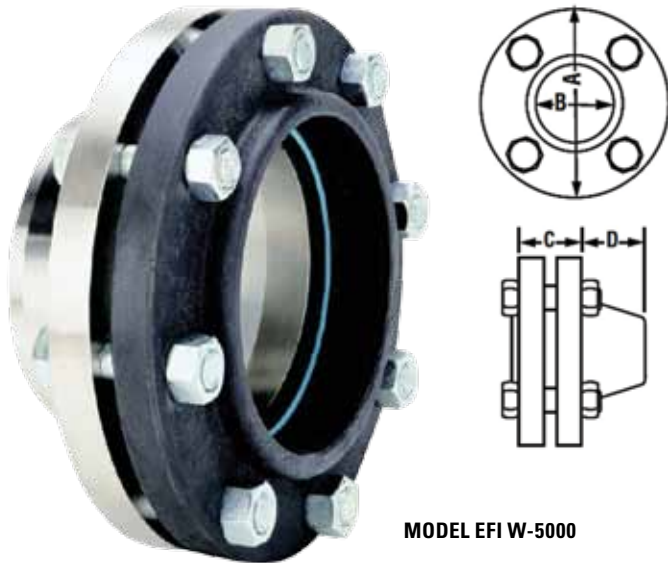
WELDING NECK

CONSTRUCTION: CARBON STEEL, STAINLESS STEEL

Pressure Rating: 150 PSI

These models have been designed for attachment to large pipe lines of processing equipment and utilize standard welding neck flanges.

- CRN – All Provinces



MODEL EFI W-5000

Flanged Conn.	Dimensions in Inches				Approx. Weight (lbs.)
	A	B	C	D	
1	4-1/4	1-3/8	1-1/4	1-5/8	6
1-1/4	4-5/8	1-11/16	1-3/8	1-5/8	7
1-1/2	5	1-15/16	1-5/8	1-3/4	9
2	6	2-7/16	1-3/4	1-3/4	13
2-1/2	7	2-15/16	2-1/8	1-7/8	20
3	7-1/2	3-9/16	2-3/8	1-3/4	23
4	9	4-9/16	2-3/8	2	34
5	10	5-11/16	2-3/8	2-1/2	38
6	11	6-3/4	2-1/2	2-1/2	48

THREADED CONNECTION

CONSTRUCTION: BRONZE, IRON, CARBON STEEL, STAINLESS STEEL

Pressure Rating: 150 PSI

These models have been designed for threading onto male thread ends of pipe fittings.

- CRN – All Provinces

NPT Conn.	Dimensions in Inches			Approx. Weight (lbs.)
	A	B	C	
1	4-1/4	1-3/8	1-1/4	5
1-1/4	4-5/8	1-11/16	1-3/8	7
1-1/2	5	1-15/16	1-5/8	7
2	6	2-7/16	1-3/4	12
2-1/2	7	2-15/16	2-1/8	16
3	7-1/2	3-9/16	2-3/8	18
4	9	4-9/16	2-3/8	30
5	10	5-11/16	2-3/8	34
6	11	6-3/4	2-1/2	45

WELDING PAD

CONSTRUCTION: CARBON STEEL, STAINLESS STEEL

Pressure Rating: 150 PSI

These models have been welded directly to tank side or cover of tank.

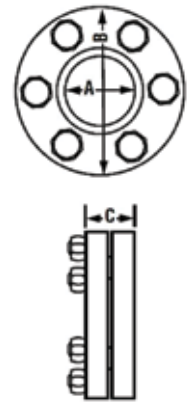
- CRN – All Provinces

NOTE: (PVQ) Pressure Vessel Quality / ASME coded units available upon request... consult with Ernst Flow Industries.



MODEL EFI 5200

Size No.	Dimensions in Inches			Approx. Weight (lbs.)
	A	B	C	
2	1-3/8	3-1/4	1-1/2	2
3	2-3/8	4-3/8	1-5/8	3-1/2
4	2-3/4	5-1/2	1-7/8	7
5	3-3/4	6-1/2	1-7/8	9
6	4-3/4	7-1/2	1-7/8	12
7	5-1/2	8-5/8	2-1/4	18
8	6-7/8	10-1/4	2-1/4	22



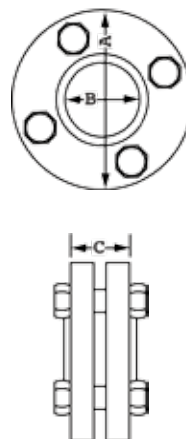
MODEL EFI LSH

Optional Polycarbonate Shield

Available in sizes 4 through 8 only

Shield assembly consists of

- 1/4" thick Polycarbonate disc that covers the diameter of EFI 5200 housing
- Special bolting



MODEL EFI S5100

