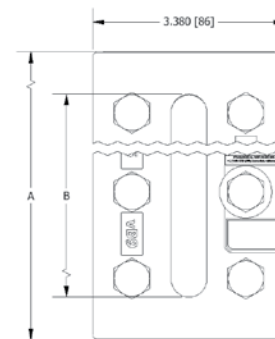


WELDING PAD GAUGES-REFLEX OR TRANSPARENT GLASS MODELS

CARBON STEEL PAD OR STAINLESS STEEL PAD



**Note: General Operating Pressures are stated. They represent pressures from the longest through the shortest single section gauge. Consult with Ernst Flow Industries for the specific operating pressure for an individual gauge size.*

REFLEX MODEL

- *For Pressures up to 2250 to 3271 PSI @ 100°F
1550 to 2285 PSI @ 600°F

NOTE: For Liquid Level ONLY; not recommended for Steam Service.

CLEAR MODEL

- *For Pressures up to 1000 to 2000 PSI @ 100°F
675 to 1350 PSI @ 600°F

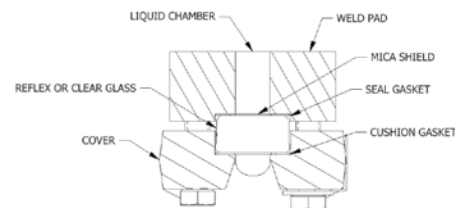
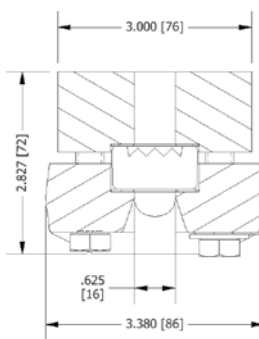
QUALITY CONSTRUCTION

All materials conform to ASME or ASTM Specifications.

- **Liquid Chamber** - one piece steel regardless of number of gauge sections - optional materials available
- **Cover** - encloses glass to reduce stress and resist glass breakage, steel construction
- **Bolts and Nuts** - alloy steel for high temperature service
- **Glass** - tempered borosilicate glass is standard for high strength and resistance to thermal shock and erosion
- **Gasket and Cushion** - die cut from quality material providing resiliency and long life



Section X Size	Clear Gauge Model	Reflex Gauge Model	A Length of Visual Glass	B Length of Visual Glass	Approx. Weight (lbs.)
SINGLE SECTION GAUGE INSERT					
11	EFI-1200WJ	EFI-1100WJ	5-1/4	3-3/4	9
12	EFI-1201WJ	EFI-1101WJ	6-1/4	4-3/4	11
13	EFI-1202WJ	EFI-1102WJ	7-1/4	5-3/4	12
14	EFI-1203WJ	EFI-1103WJ	8-1/4	6-3/4	14
15	EFI-1204WJ	EFI-1104WJ	9-3/8	7-7/8	16
16	EFI-1205WJ	EFI-1105WJ	10-5/8	9-1/8	18
17	EFI-1206WJ	EFI-1106WJ	11-3/4	10-1/4	20
18	EFI-1207WJ	EFI-1107WJ	13-3/8	11-7/8	22
19	EFI-1208WJ	EFI-1108WJ	14-1/8	12-5/8	24
TWO SECTION GAUGE INSERT					
24	EFI-1223WJ	EFI-1123WJ	16-1/2	15	28
25	EFI-1224WJ	EFI-1124WJ	18-3/4	17-1/4	32
26	EFI-1225WJ	EFI-1125WJ	21-1/4	19-3/4	36
27	EFI-1226WJ	EFI-1126WJ	23-1/2	22	40
28	EFI-1227WJ	EFI-1127WJ	26-3/5	25-1/4	44
29	EFI-1228WJ	EFI-1128WJ	28-1/4	26-3/4	48
THREE SECTION GAUGE INSERT					
36	EFI-1245WJ	EFI-1145WJ	31-7/8	30-3/8	54
37	EFI-1246WJ	EFI-1146WJ	35-1/4	33-3/4	60
38	EFI-1247WJ	EFI-1147WJ	40-1/8	38-5/8	66
39	EFI-1248WJ	EFI-1148WJ	42-3/8	40-7/8	72
FOUR SECTION GAUGE INSERT					
47	EFI-1266WJ	EFI-1166WJ	47	45-1/2	80
48	EFI-1267WJ	EFI-1167WJ	53	52	88
49	EFI-1268WJ	EFI-1168WJ	56	55	96



**Shield can only be used with Clear Flat Glass, not Reflex Glass Replacement Glass and Gaskets are illustrated on page 13.*