



Air Conditioning & Heating

DSZC16

COOLING CAPACITY: 24,000 - 60,000 BTU/H

HEATING CAPACITY: 24,000 - 60,000 BTU/H

SPLIT SYSTEM HEAT PUMP UP TO 16 SEER & 9.5 HSPF



Proper sizing and installation of equipment is critical to achieve optimal performance. Split system air conditioners and heat pumps must be matched with appropriate coil components to meet ENERGY STAR® criteria. Ask your contractor for details or visit www.energystar.gov.

Contents

| | |
|-----------------------------|----|
| Nomenclature..... | 2 |
| Product Specifications..... | 3 |
| Expanded Cooling Data..... | 4 |
| Expanded Heating Data..... | 20 |
| AHRI Ratings..... | 22 |
| Dimensions..... | 29 |
| Wiring Diagram..... | 30 |
| Accessories..... | 31 |

Standard Features

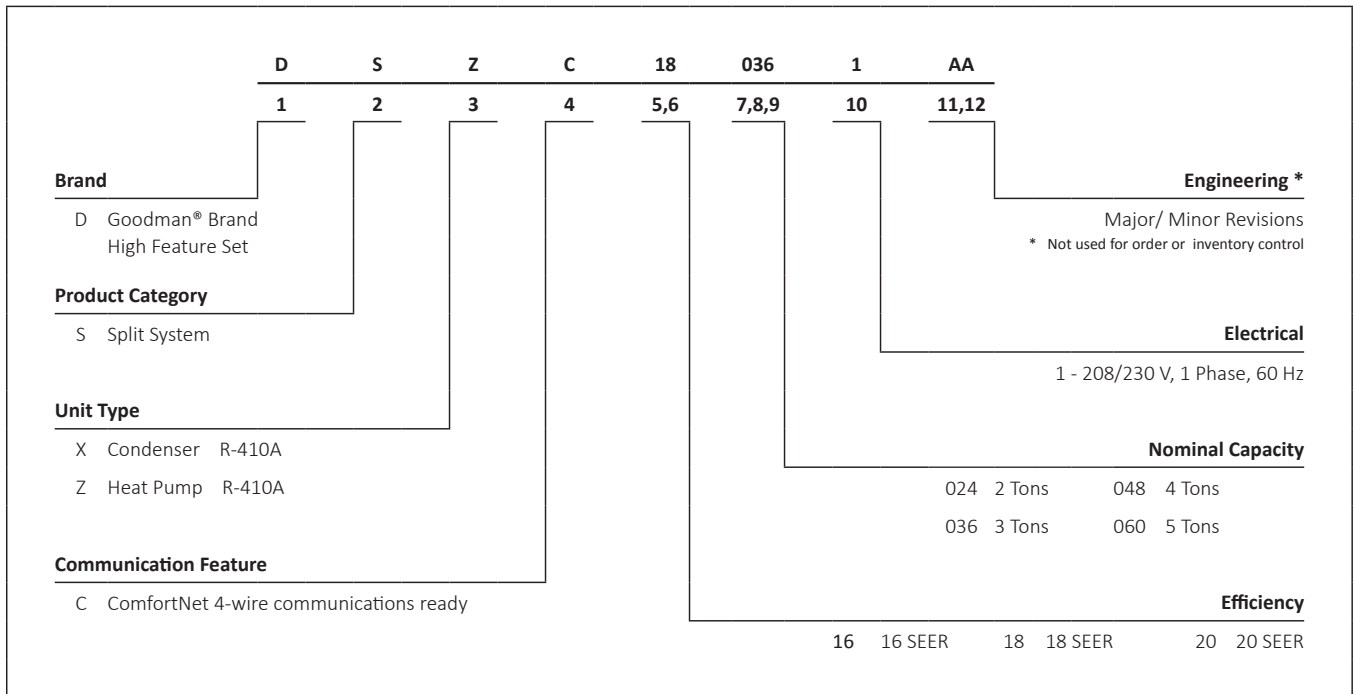
- Two-Stage Copeland® UltraTech™ scroll compressor
- High-density foam compressor sound blanket
- ComfortNet™ Communications System compatible
- Expanded ComfortAlert™ diagnostics built in
- Set-up capable with two low-voltage wires to outdoor unit
- Diagnostic indicator lights and storage of six fault codes
- Color-coded terminal strip for non-communicating set-up
- SmartShift® technology to ensure quiet, reliable defrost
- Factory-installed bi-flow liquid-line filter drier
- Factory-installed suction-line accumulator
- Factory-installed compressor crankcase heater
- Factory-installed high-capacity muffler
- Factory-installed coil and ambient temperature sensors
- High- and low-pressure switches
- Fully charged for 15' of tubing length
- Two-speed quiet condenser fan motor
- Sweat connection service valves with easy access to gauge ports
- AHRI Certified; ETL Listed





Cabinet Features

- Goodman® brand sound control top design
- Heavy-gauge galvanized-steel cabinet
- Appliance-quality powder-paint finish with 500-hour salt-spray approval
- Wire fan discharge grille
- Steel louver coil guard
- Rust-resistant coated screws
- Compact footprint
- Top and side maintenance access
- Single-panel access to controls with space provided for field-installed accessories
- When properly anchored, meets 2010 Florida Building Code unit integrity requirements for hurricane-type winds (Anchor bracket kits available.)



* Complete warranty details available from your local dealer or at www.goodmanmfg.com. To receive the Lifetime Compressor Limited Warranty (good for as long as you own your home), 10-Year Unit Limited Warranty, and 10-Year Parts Limited Warranty, online registration must be completed within 60 days of installation. Online registration is not required in California or Québec.



| | DSZC16 0241A | DSZC16 0361A | DSZC16 0481A | DSZC16 0601B |
|---|---|---|--|---|
| CAPACITIES AND RATINGS | | | | |
| Nominal Cooling (BTU/h) | 24,000 | 36,000 | 48,000 | 60,000 |
| Nominal Heating (BTU/h) | 24,000 | 36,000 | 48,000 | 60,000 |
| Decibels | 72 | 73 | 74 | 75 |
| COMPRESSOR | | | | |
| RLA | 11.7 | 15.3 | 21.2 | 28.8 |
| LRA | 58.3 | 83.0 | 104.0 | 152.9 |
| CONDENSER FAN MOTOR | | | | |
| Horsepower | 1/6 | 1/6 | 1/6 | 1/6 |
| FLA | 1.2 | 1.2 | 1.2 | 1.2 |
| REFRIGERATION SYSTEM | | | | |
| Refrigerant Line Size ¹ | | | | |
| Liquid Line Size ("O.D.) | 3/8" | 3/8" | 3/8" | 3/8" |
| Suction Line Size ("O.D.) | 3/4" | 7/8" | 1 1/8" | 1 1/8" |
| Refrigerant Connection Size | | | | |
| Liquid Valve Size ("O.D.) | 3/8" | 3/8" | 3/8" | 3/8" |
| Suction Valve Size ("O.D.) | 3/4" | 7/8" | 7/8" | 7/8" |
| Valve Connection Type | Sweat | Sweat | Sweat | Sweat |
| Refrigerant Charge | 153 | 203 | 263 | 273 |
| Shipped with Orifice Size | NA | NA | NA | NA |
| ELECTRICAL DATA | | | | |
| Volts -Hz | 208/230-60 | 208/230-60 | 208/230-60 | 208/230-60 |
| Minimum Circuit Ampacity ² | 15.8 | 20.3 | 27.7 | 37.2 |
| Max. Overcurrent Protection ³ | 25 | 35 | 45 | 60 |
| Min / Max Volts | 197/253 | 197/253 | 197/253 | 197/253 |
| Power Supply Conduit Size | 1/2" or 3/4" | 1/2" or 3/4" | 1/2" or 3/4" | 1/2" or 3/4" |
| UNIT WEIGHTS | | | | |
| Equipment Weight | 190 | 233 | 305 | 309 |
| Ship Weight (lbs) | 208 | 255 | 327 | 331 |
| ENERGY STAR CERTIFIED [^] | | | | |
| |  |  |  |  |

[^] Proper sizing and installation of equipment is critical to achieve optimal performance. Split system air conditioners and heat pumps must be matched with appropriate coil components to meet ENERGY STAR® criteria. Ask your contractor for details or visit www.energystar.gov. The www.energystar.gov website provides up-to-date system combinations certified to meet ENERGY STAR requirements. See Page 22 for all ENERGY STAR-certified combinations as of this document's revision date.

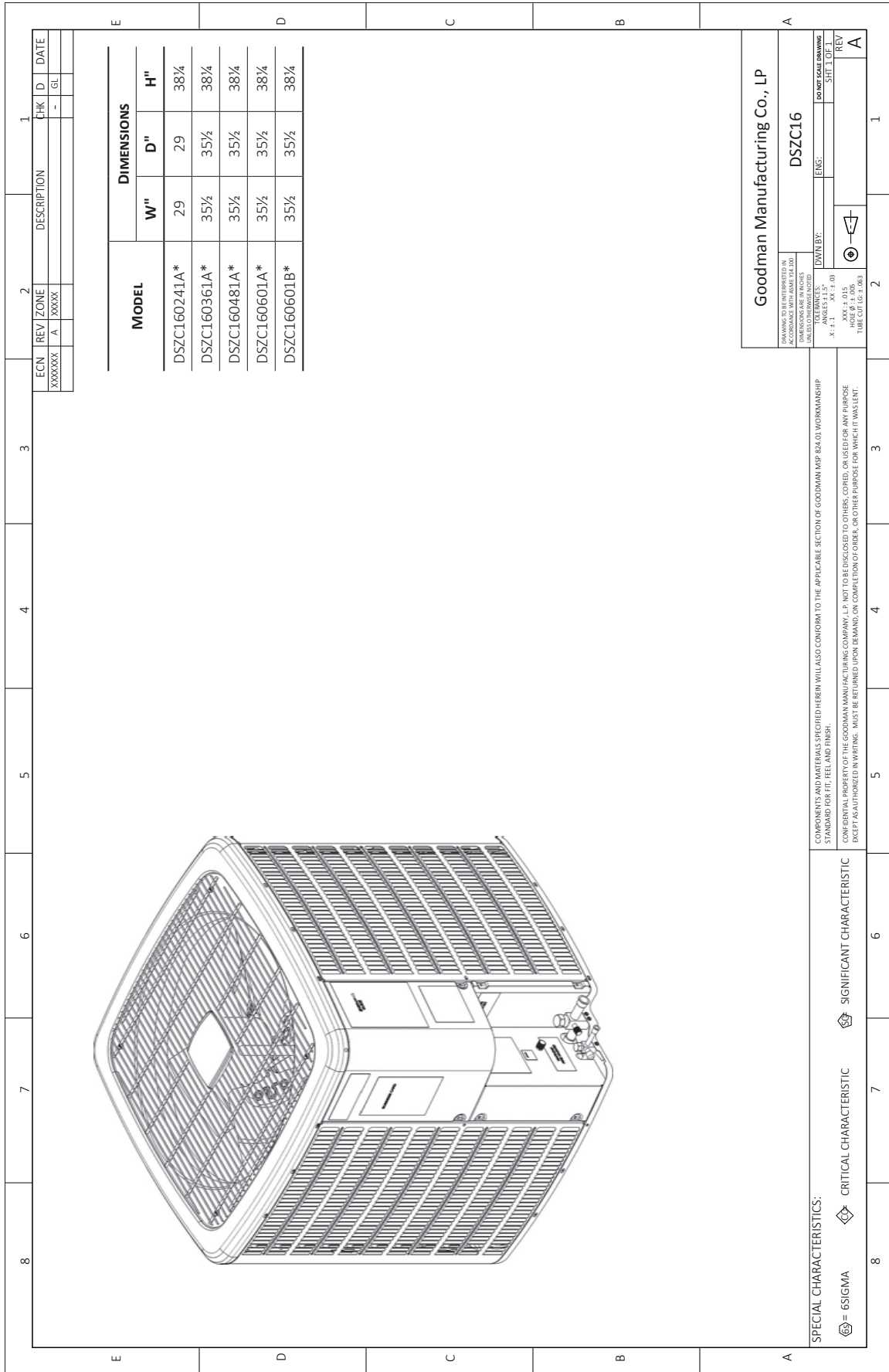
¹ Tested and rated in accordance with AHRI Standard 210/240

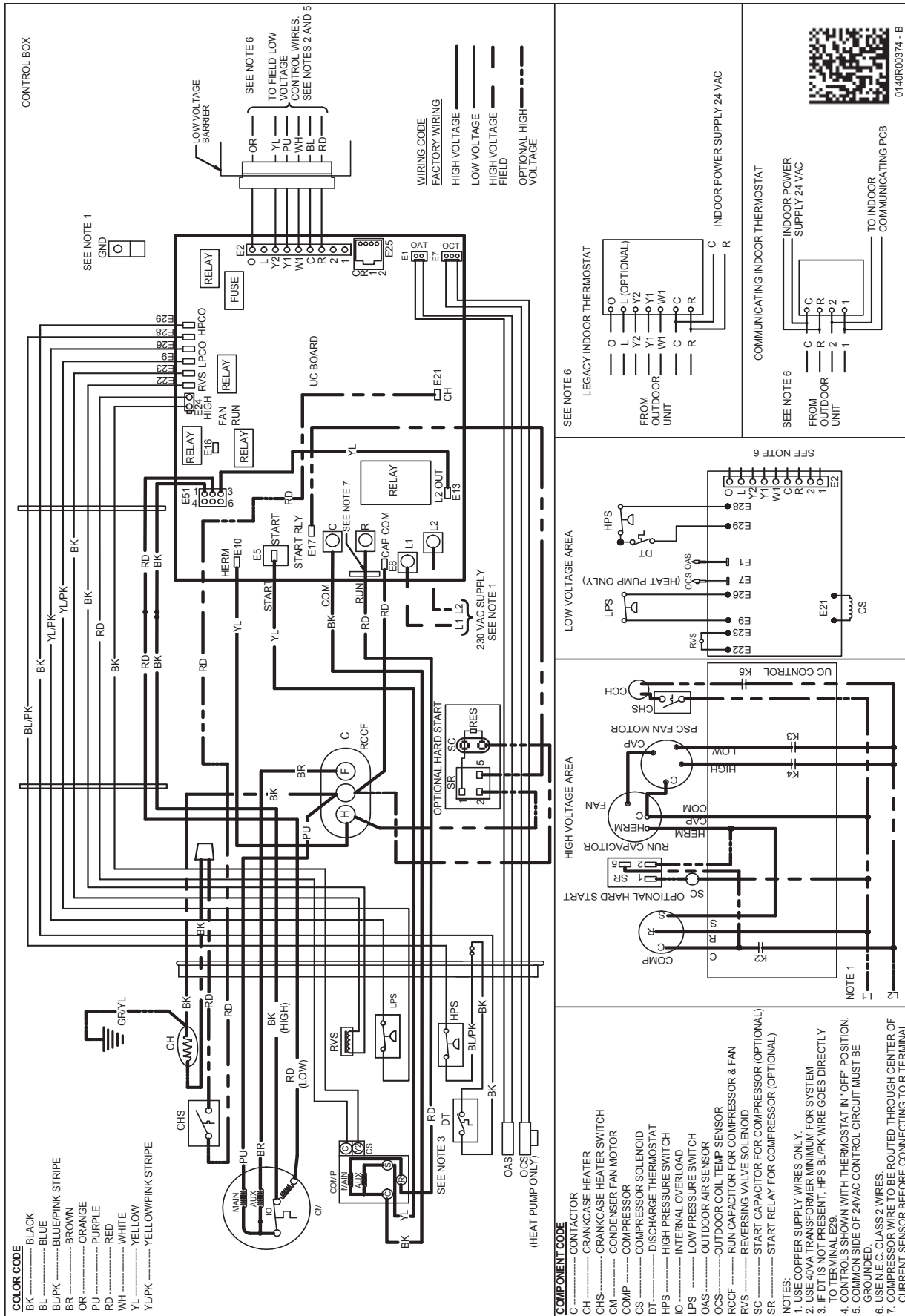
² Wire size should be determined in accordance with National Electrical Codes; extensive wire runs will require larger wire sizes

³ Must use time-delay fuses or HACR-type circuit breakers of the same size as noted.

NOTES

- Always check the rating plate for electrical data on the unit being installed.
- Installer will need to supply 3/8" to 1 1/8" adapters for suction line connections.
- Unit is charged with refrigerant for 15' of 3/8" liquid line. System charge must be adjusted per Installation Instructions Final Charge Procedure.
- Installation of these units requires the specified TXV Kit to be installed on the indoor coil.
THE SPECIFIED TXV IS DETERMINED BY THE OUTDOOR UNIT, NOT THE INDOOR COIL.





WARNING
 High Voltage: Disconnect all power before servicing or installing this unit. Multiple power sources may be present. Failure to do so may cause property damage, personal injury, or death.

Wiring is subject to change. Always refer to the wiring diagram or the unit for the most up-to-date wiring.