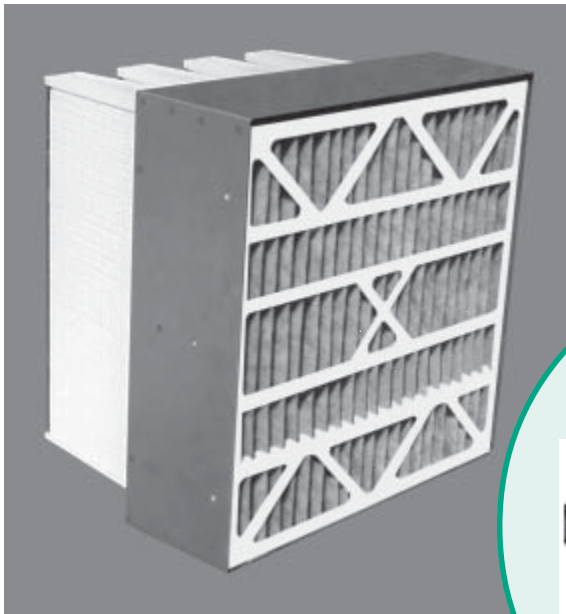


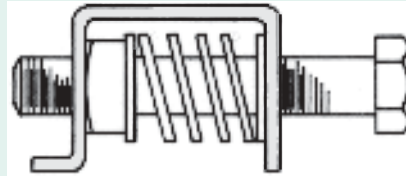
**PRODUCT
DATA**
SAFE-LINE™
SERIES CA99
PD-SLCA99-03A
JANUARY 2003

**FILTER
RETAINING
EQUIPMENT**

SAFE-LINE™
SERIES CA99
**SPECIAL FILTER HOLDING MODULE
FOR CRUCIAL ASHRAE APPLICATIONS**



CA99
CA99
CA99
CA99
CA99
CA99



**Variable Pressure
Spring Lock Bolt**

BLC's SAFE-LINE Series CA99 is an advanced design Special Filter Holding Module that provides vision, value, versatility and integrity for Crucial ASHRAE Applications. Front Access, the CA99 Filter Holding Modules are utilized in several applications where Side Access is either restricted or not preferred. The CA99 can function as a single unit or can be built up in banks, modular style. This 1, 2 or 3 stage module is engineered specifically for utilization in AHU make-up air units and in processes involving paint collection.

Special CA99 Filter Holding Modules can also be fabricated for many custom applications. Variable pressure Locking Mechanisms provide absolute security while accommodating final filter depths of 1", 2" or 4" (*without any retrofit whatsoever!*) Standard 2" or 4" prefilters readily fit into the module's rugged 4" , 6" or 8" depth. Solid welded corners and a unique, precision formed vision also allow a lot of versatility in the choice of filters used.

Construction

Constructed of 16 gauge aluminized steel, BLC's CA99 Modules are solidly welded to prevent any air bypass. This stops any air leakage through module joints and provides an economical and quality product that matches the integrity of the ASHRAE Filter. CA99 Modules are supplied with internal locating spacers that properly align the ASHRAE Filter(s) inside the module. Supplied with 7/32" pre-punched mounting holes, the CA99 Modules can be banked for easy assembly.

Four (4) Heavy Duty Spring Bolts that are inserted into locking slots apply even pressure and seal the downstream gasket of the ASHRAE Filter against the Holding Module. Fabricated and assembled from Zinc Plated Steel, the Spring

Bolts allow a greater degree of compression (600 ft. lbs. of positive pressure per ASHRAE Filter) and control than any other type of bolts, making the CA99 the best precision Sealing Frame in the industry. Its 16 gauge aluminized steel construction supplies the rigidity to allow efficient assembly into frame banks. Additionally, the CA99 Modules are supplied with a downstream reinforcement flange for even greater structural support. This rigid support, combined with the aluminized steel's superior corrosion and heat resistance, results in extended product life and improves its quality appearance. Aluminized steel conforms to ASTM Specification A463 and is used for such applications as space heaters, mufflers and incinerators which are subjected to extremely corrosive conditions.

Corporate Headquarters
P.O. Box 14187,
Louisville, Kentucky 40214
Phone: (502) 366-6002
Fax: (502) 366-6255

E-Mail: askus@blcind.com

BLC-WEST
Phone: (480) 839-5333
Fax: (480) 839-1584

www.blcind.com

We reserve the right to make changes in product design and product specifications without prior notice or obligation.

BLC INDUSTRIES INC.
Breathe Easy, We Have The Line On Air Filtration.

CA99 = VERSATILITY + INTEGRITY

COUNTLESS APPLICATION POSSIBILITIES	COMBINE ANY 1", 2" OR 4" PREFILTER(S) WITH ANY 1", 2" OR 4" FINAL FILTER			
EXAMPLES	1-STAGE	2-STAGE COMBINATIONS		3-STAGE
HVAC FILTRATION APPLICATIONS	Bag Filter (1" Header-Type)	2" Pleated Prefilter + Bag Filter	4" Disposable Prefilter + Cartridge Filter	2" Pleated + 2" Metal + Bag Filter
	12" Rigid Cell Filter (1" Header-Type)	2" Pleated Prefilter + 12" Rigid Cell Filter	4" Pleated Prefilter + 12" Rigid Cell Filter	2" MSF + 2" Pleated + 12" Cartridge Filter
	12" Extended Surface Rigid (ESR) Cell Filter	4" Pleated Prefilter + 12" ESR Cell Filter	4" Compact Rigid Cell + 12" ESR Cell Filter	2" MSF + 2" Pleated + 12" Rigid Cell Filter
PAINT COLLECTION APPLICATIONS	Bag Filter (1" Header-Type)	2" Disposable + Bag Filter	2" Poly Ring Panel + 4" Paint Arrestor Pad	2" Poly Ring Panel + 2" Pleated + 12" ESR Cell
	Cartridge Filter (1" Header-Type)	2" Paint Arrestor Pad + 4" Pleated Filter	2" Paint Arrestor Pad + 12" Rigid Cell Filter	2" Paint Ar. Pad + 2" Paint Ar. Pad + Bag Filter
OTHER APPLICATIONS	4" Moisture Separator Cell	4" Pleated Prefilter + 4" Carbon Tray	4" Compact Rigid Cell + 4" HEPA Box Filter	2" Poly Ring Panel + 2" Pleated + 2" Carbon Tray

Dimensional Data

3 AVAILABLE DEPTHS FOR SLCA99 SPECIAL FILTER HOLDING MODULES: 4", 6" and 8"

MODEL NUMBER	NOMINAL SIZE	ACTUAL DIMENSIONS	FILTER(S) SIZE
SLCA9941224	12 x 24 x 4	12 x 24 x 3 7/8	11 3/8 x 23 3/8
SLCA9942424	24 x 24 x 4	24 x 24 x 3 7/8	23 3/8 x 23 3/8
SLCA9961224	12 x 24 x 6	12 x 24 x 5 7/8	11 3/8 x 23 3/8
SLCA9962424	24 x 24 x 6	24 x 24 x 5 7/8	23 3/8 x 23 3/8
SLCA9981224	12 x 24 x 8	12 x 24 x 7 7/8	11 3/8 x 23 3/8
SLCA9982424	24 x 24 x 8	24 x 24 x 7 7/8	23 3/8 x 23 3/8

- Models are supplied with four (4) Variable Pressure Spring Bolts to secure ASHRAE Filter.
- Please see FILTER-LINE™ Series information for ASHRAE Filter specifications.

MODEL NUMBER KEY
SLCA99**82424**

Insert model number extension to complete model number.

SL- SAFE-LINE™
CA- Crucial Applications
99- 99.99% Vision Design

8- Unit Depth
24- Unit Width
24- Unit Height

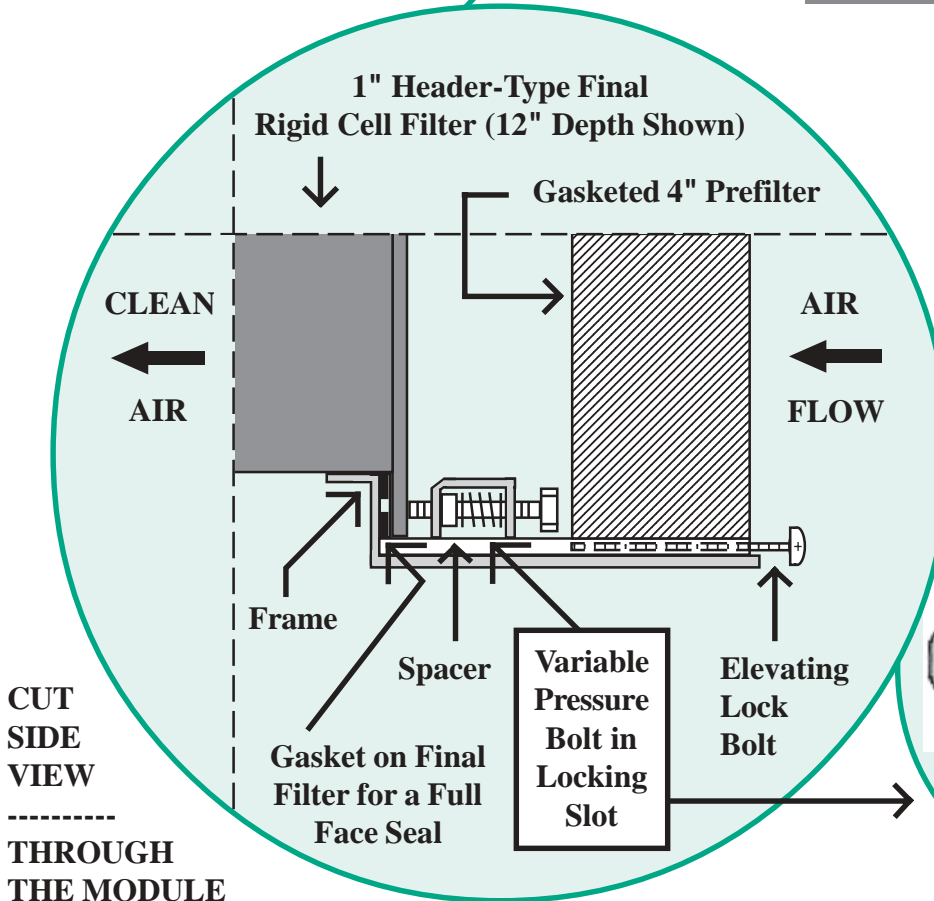
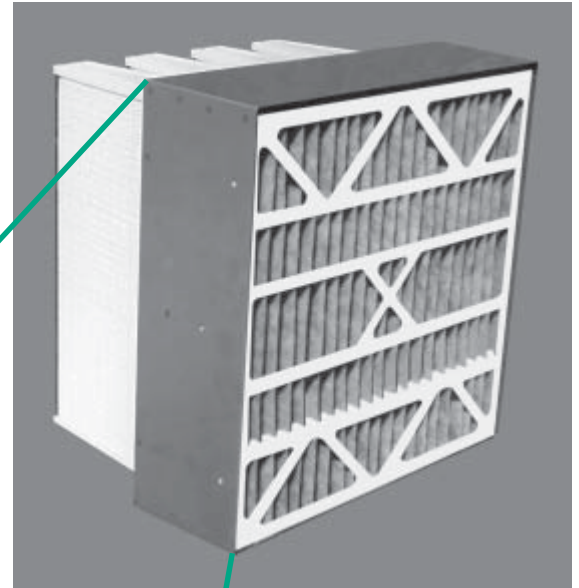
**SPECIFICATION
DATA**
SAFE-LINE™
SERIES CA99
SPD-SLCA99-03A
JANUARY 2003

FILTER
RETAINING
EQUIPMENT

SAFE-LINE™
CA99 FILTER MODULE
SPECIAL FILTER HOLDING MODULE
FOR CRUCIAL ASHRAE APPLICATIONS

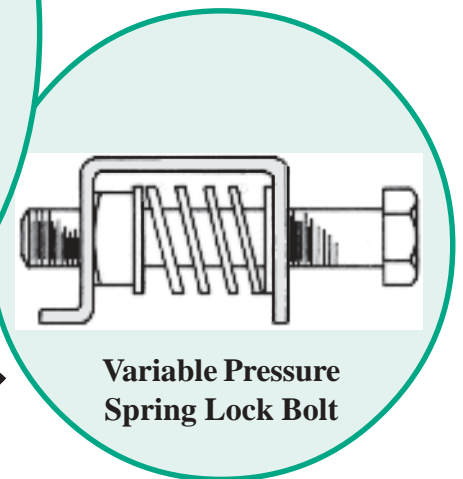
SPECIFICATIONS:

- Front Access (For Full Support of the Final ASHRAE Filter)
- Completely Factory Assembled
- 16 Gauge Aluminized Steel
- Locking Mechanism (4 Variable Pressure Spring Bolts for 600 Ft. Lbs. of Positive Pressure per Final Filter)
- Modular Construction (Built in Banks)



OPTIONS:

- 304 or 316 Stainless Steel Construction
- Stainless Steel Spring Bolts



Corporate Headquarters
P.O. Box 14187,
Louisville, Kentucky 40214
Phone: (502) 366-6002
Fax: (502) 366-6255

E-Mail: askus@blcind.com

BLC-WEST
Phone: (480) 839-5333
Fax: (480) 839-1584

www.blcind.com

We reserve the right to make changes in product design and product specifications without prior notice or obligation.

BLC INDUSTRIES INC.
Breathe Easy, We Have The Line On Air Filtration.

SUBMITTAL DATA
SAFE-LINE™
SERIES CA99
SD-SLCA99-03A
JANUARY 2003

**FILTER
RETAINING
EQUIPMENT**

SAFE-LINE™
SERIES CA99
**SPECIAL FILTER HOLDING MODULE
FOR CRUCIAL ASHRAE APPLICATIONS**

PROJECT			DATE		
MODEL NUMBER	QUANTITY	SYSTEM IDENTIFICATION	WIDTH	HEIGHT	DEPTH
MODEL NUMBER	QUANTITY	SYSTEM IDENTIFICATION	WIDTH	HEIGHT	DEPTH

**AVAILABLE
UNIT OPTIONS**

- 304 STAINLESS STEEL** **STAINLESS STEEL BOLTS**
 316 STAINLESS STEEL **SPECIAL DEPTH**

NOTE: Please see SAFE-LINE™ SERIES Option Data for details on unit options.

UNIT CONFIGURATION/FILTER BUILT-UP BANK INFORMATION

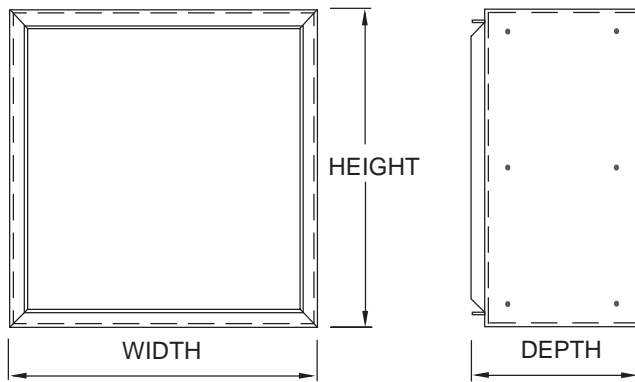
The above mentioned quantity of modules will be shipped individually and **field assembled** into a built-up bank for **each** system ID shown. The built-up bank system will be _____ modules wide by _____ modules high. Its approximate dimensions are shown at right.

NOTE: Built-up bank dimensions do not include use of stiffeners.

Disregard if CA99 Modules are used individually!

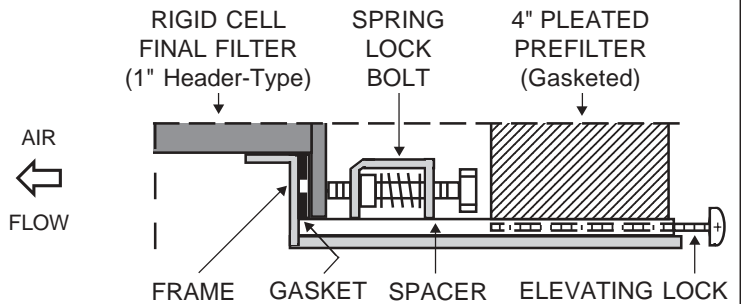
QUANTITY	MODEL NUMBER	SIZE
ARRANGED	BUILT-UP BANK DIMENSIONS (WxHxD)	

UNIT DIMENSIONAL DATA



SAFE-LINE™ CA99 Filter Holding Module depth is 4", 6" or 8".

UPSTREAM SIDE CONFIGURATION



STANDARD MATERIALS OF CONSTRUCTION

MODULE	16 GAUGE ALUMINIZED STEEL
SPRING BOLT	3/8-16 x 2 1/2 ZINC PLATED STEEL

MECHANICAL SPECIFICATIONS

CA99 SPECIAL FILTER HOLDING MODULES

CA99 Special Filter Holding Modules shall be **SAFE-LINE™ Series CA99** as manufactured by BLC Industries, Inc. Louisville, KY, Tempe, AZ. Module sizing shall be determined from the equipment schedule. Modules shall be manufactured from 16 gauge aluminized steel. Special Filter Holding Modules shall be solid welded at all joints to prevent air leakage. CA99 Modules shall be supplied with pre-punched alignment and mounting holes for easy bank assembly. Module shall incorporate four (4) Spring Lock Bolts to effectively seal ASHRAE Filters. Manufacturer shall certify and identify that CA99 Special Filter Modules are **Made in the U.S.A.**

SUGGESTED CA99 INSTALLATION INSTRUCTIONS

SAFE-LINE™ Series CA99 Special Filter Modules may need additional supports when used into built-up bank assemblies, depending upon overall size. All frame joints should be caulked to prevent any air bypass. CA99 Modules require upstream access to service air filters. To install ASHRAE Final Filter, insert filter into module. ASHRAE Filter should be in correct alignment due to locating spacers. Push filter into rear of frame until filter gasket reaches the module sealing flange. Install (4) Variable Pressure Spring Lock Bolts by inserting bolts into the slot in spacer. Tighten bolts with equal pressure until a suitable compression of the ASHRAE Filter gasket has been achieved. Then, secure and seal Prefilter(s) by use of Elevating Lock Bolt(s).

Corporate Headquarters

P.O. Box 14187,
Louisville, Kentucky 40214
Phone: (502) 366-6002
Fax: (502) 366-6255

E-Mail: askus@blcind.com

BLC-West

Phone: (480) 839-5333
Fax: (480) 839-1584

www.blcind.com

We reserve the right to make changes in product design and product specifications without prior notice or obligation.



Breathe Easy, We Have The Line On Air Filtration.