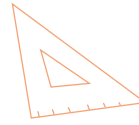


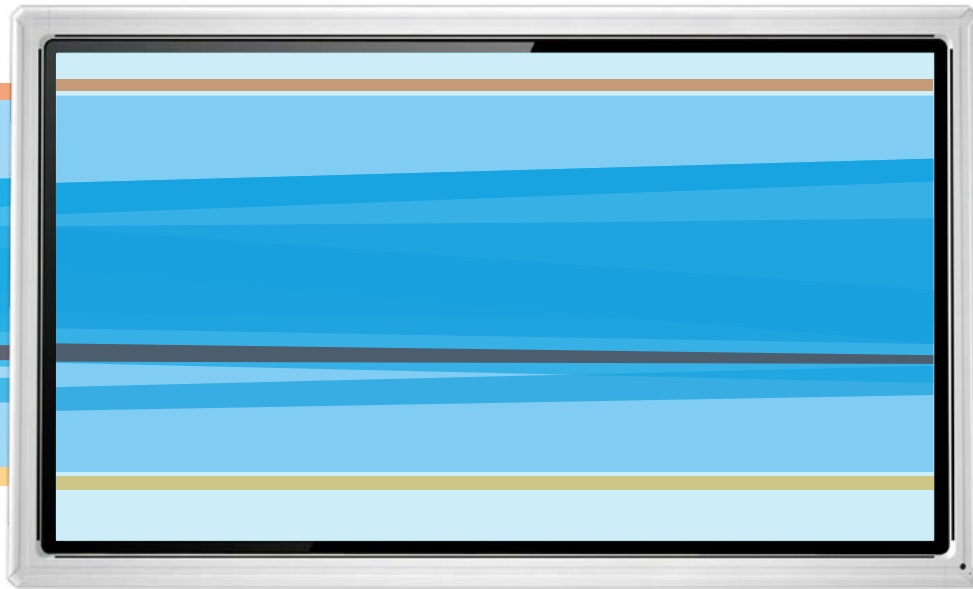
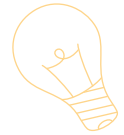


EDUCATION



3+1

PRODUCT CATALOG



TRIUMPH BOARD®
One Idea Ahead



Abc



$\sqrt{33}$





TRIUMPH BOARD is a manufacturer of interactive presentation solutions and audio-visual equipment selling to the Educational and Business sectors worldwide.

The TRIUMPH BOARD product offering includes interactive LED LCDs, interactive whiteboards, interactive /projectors, audience response systems, videoconferencing systems, document cameras, tablets, further allied products and wide range of supporting software.

TRIUMPH BOARD is able to deliver unbeatable interactive solutions, with best in class software on best in class hardware, due to its global partnerships with Microsoft, Intel, Texas Instruments, RM Education, MyScript, DisplayNote and others.

The strategy of combining ISO certified intelligent design and efficient manufacturing in Europe and also Asia enables TRIUMPH BOARD to deliver unbeatable solutions with high “European” quality at unbeatable prices.

No message is complete without a powerful presentation, thus TRIUMPH BOARD has built its business on being “One Idea Ahead” in interactive solutions that meet the evolving needs of users and enable the presenter to perform at the next level! TRIUMPH BOARD products are created to enhance presentation effectiveness in an educational or corporate environment.

TRIUMPH BOARD has developed country partners that enable us to promote, educate and install our product line on local markets with country language support.

About us

We are proud of our successes and look forward to surpassing your expectations in the future!



A b c

Interactive

Touch Screens

We have developed a fully integrated, professional solution – the TRIUMPH BOARD MULTI Touch LED LCD Series is an effective presentation tool for showing lessons or presentations interactively in any type of classroom space. The IR LED optical technology provides the ideal multi-touch experience. The optional built-in mini PC with incorporated Intel® Core™ Processors and Microsoft Windows 10 Pro (OEM) with a selection of language options and preinstalled applications, delivers top-of-the-line performance. A wide range of accessories such as LiftBoxes or mobile stands makes the solution a zero-compromise!



Interactive

Whiteboards

TRIUMPH BOARD offers uniquely cost-effective interactive whiteboard solutions. With the TRIUMPH BOARD interactive whiteboard you will be able to learn and teach in any classroom setting. TRIUMPH BOARD 6-touch inputs with IR cell LED Optical technology enables simultaneous collaboration between students using the wide range of included applications.



Interactive

Presentation Products

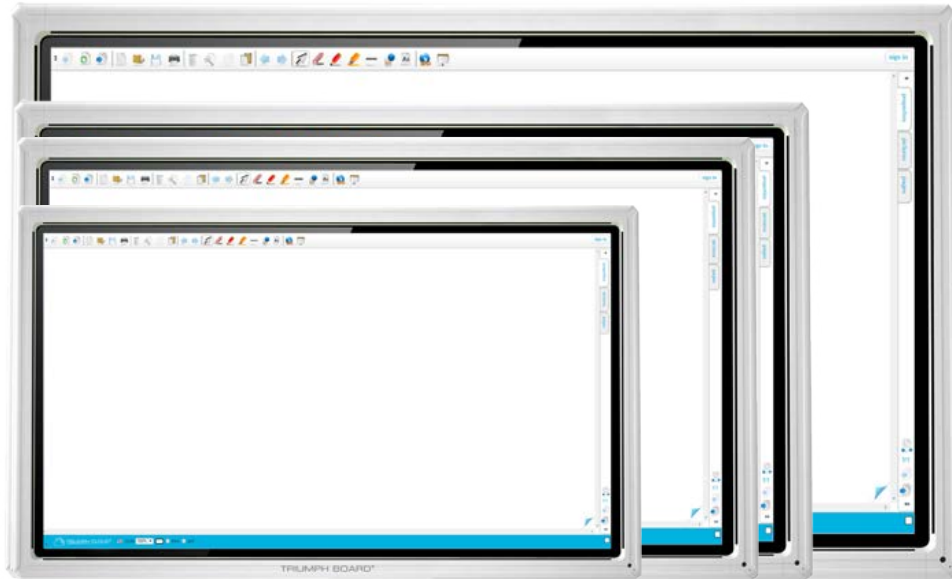
TRIUMPH BOARD provides a range of audio-visual presentation products to suit all types of applications from interactive Ultra Short Throw and Short Throw projectors, documents cameras, tablets, audience response systems to videoconferencing systems.





55" 65" 70" 84"

MULTI Touch LED LCD



TRIUMPH BOARD MULTI Touch LED LCDs are fully integrated, professional, multi touch flat panel displays with amazing performance and stunning visuals. TRIUMPH BOARD MULTI Touch LED LCDs are effective presentation tools for showing lessons or presentations interactively in any classroom and training room.

- Multi-Touch (10 touch - inputs)
- UHD / FULL HD resolution
- Android System
- MINI PC build in (optional)
- Video Conferencing System VC1 (optional)
- TRIUMPH CLOUD (USB Bundle Edition) online annotation software
- TRIUMPH CLOUD [My Files](#) cloud data storage, **free for students**
- Display Note collaboration software (cloud)



No need for a projector! Easy installation! No limitations caused by light conditions! Elegant and stylish appearance.



Features

- Fully compatible with TRIUMPH BOARD MULTI Touch LED LCD
- Fully integrated solution in a slim design
- Windows® 10 Pro (OEM) license
- Ideal product with sufficient power for pre-installed SW bundle and collaboration

7/33

MINI PC (optional)

for MULTI Touch LED LCD Series

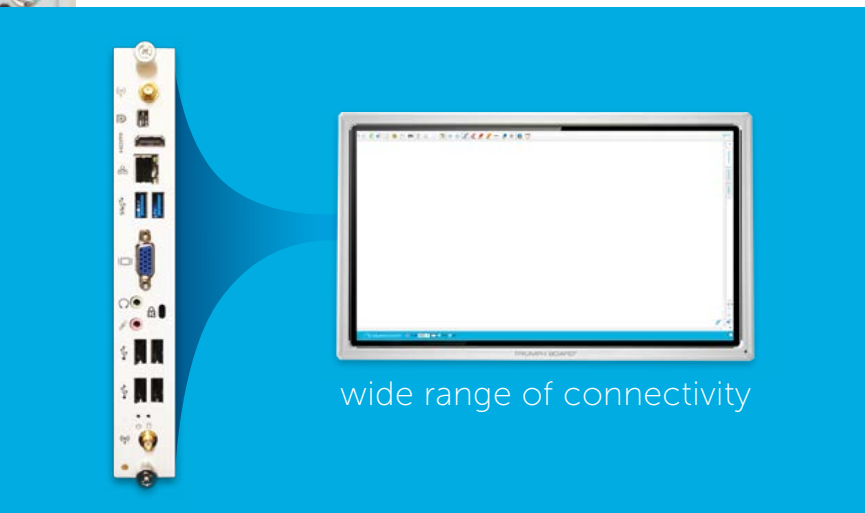
TRIUMPH BOARD MINI PCs are powerful, fully-integrated personal computers for the TRIUMPH BOARD MULTI Touch LED LCD Series.

TRIUMPH BOARD MINI PCs are equipped with an Intel® Core™ i5 processor, Intel® graphics card and 4 GB RAM, which gives high power for running any software and enables to display 4K pictures. An up to 500 GB hard disk provides sufficient capacity for saving and storing the user's data.

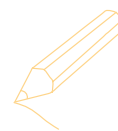
TRIUMPH BOARD MINI PCs include a license of Microsoft® Windows® 10 Pro (OEM) with selection of language options and preinstalled applications.

MINI PC PC10A

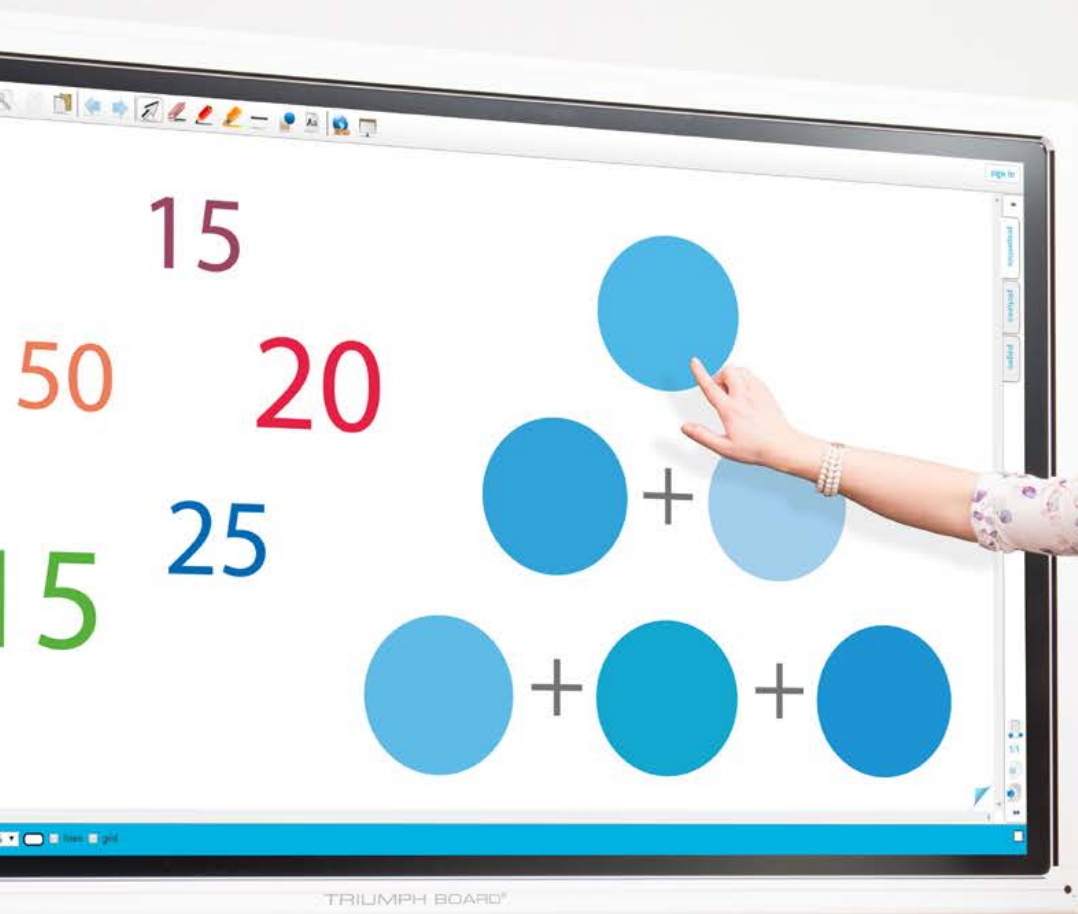
EAN:	8592580112164		
Processor:	Intel® Core™ i5 (Intel® Core™ i7 - on demand)		
Graphics:	Integrated Intel HD 4600		
Sound Card:	Integrated High Definition Audio Stereo		
Networking:	Integrated 10 / 100 / 1000 M Adaption		
Memory:	4GB DDRIII 1333/1600MHz		
Hard Drive:	500 GB SATA		
WIFI:	IEEE 802.11 ac (2.4G/5G) Bluetooth 4.0		
USB:	4x USB 2.0 and 2x USB 3.0		
Audio:	Side Headphone and Mic Ports		
Lan Port (RJ45):	1	HDMI Out:	1 (up to 4K resolution)
VGA Out:	1	Mini Display Port:	1 (up to 4K resolution)
Operation System:	Microsoft® Windows® 10 Professional (OEM) 64-bit MultiLang		



3+1



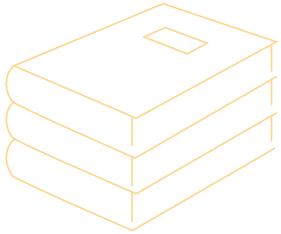
Accessories



Features

- Hard-wearing components
- Simple assembly, quiet operations and easy handling
- No need for maintenance
- Elegant modern design





Mobile Stand with Electric Lift

for LED LCD

Specifications

EAN:	8592580082825
Model:	TRIUMPH BOARD Mobile Stand with Electric Lift for LED LCD
Designed for:	MULTI Touch LED LCD Series Series (55"/65"/70"/84")
Stand material:	steel
Assembly:	VESA 400x200, 600x400, 600x200, 300x300, 400x400, 600x600
Lift of Stand:	26.57"
Centre of LED LCD at highest position:	68.30"
Centre of LED LCD at lowest position:	41.73"
Maximum Load:	286 lb
Control unit:	Panel with connectors, switch, IEC C22, cable intake
Power source:	110 VAC
Dimensions without packaging :	54.52" x 27.08" x 27.95"
Weight without packaging:	108 lb
Weight with packaging:	approx. 114 lb
Accessories (optional):	Pen Tray for Mobile Stand with Electric Lift for LED LCD Laptop Tray for Mobile Stand with Electric Lift for LED LCD

The TRIUMPH BOARD Mobile Stand for the TRIUMPH BOARD MULTI Touch LED LCD Series has an Electric Lift to change the height over a range of 26.58".

A b c



TRIUMPH BOARD Mobile Stand with Electric Lift is designed to provide a high level of comfort as well as the quiet and smooth attachment of LED LCD for the entire period of the product's lifespan.



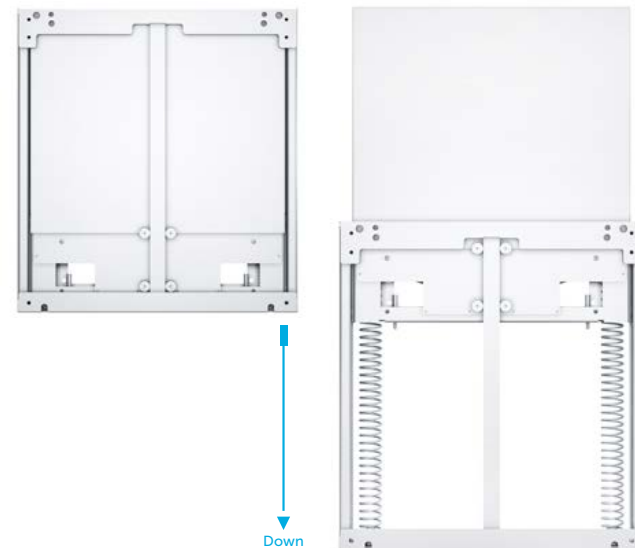
Stands

LiftBox for LED LCDs



The TRIUMPH BOARD LiftBox for LED LCDs is the perfect and easy solution to move TRIUMPH BOARD LED LCDs up and down, without electric power.

The partially overlapping weight range gives the installer the choice between a models travel of 15.75" and 25.59". All LiftBox models offer a wide range of accessories and come in a compact and stylish white design that is hidden behind the screen.

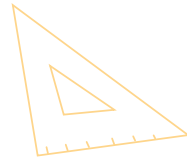


Mobile Stand for LiftBox

The TRIUMPH BOARD Mobile Stand for LiftBox has an assembly hitch for easily adding LED LCDs (55"/65"/70").

The Stand also comes with wheels for easy movement, which can be easily blocked to stop the Stand moving.

The TRIUMPH BOARD Mobile Stand for the LiftBox is designed to provide a high level of convenience as well as smooth attachment of LED LCD throughout its lifespan.



Tilt Frame for LiftBox for 55" LED LCD

A b c

Tilt Frame for the TRIUMPH BOARD LiftBox for 55" LED LCDs allows you to tilt out the 55" MULTI Touch LED LCD by 60 degrees.

Tilt Frame is perfect and easy solution that helps you to interface with the screen as well as collaborate with colleagues or students together on one screen.

Tilt Frame is optional accessories to TRIUMPH BOARD LiftBox for 55" LED LCDs.



Features

- Ergonomic and easy to use
- Quality product, safe to use
- Compact design - product disappears behind the screen
- Long product lifetime
- Fast and easy installation, maintenance-free
- Low transport and installation cost

ABC

Software

TRIUMPH CLOUD

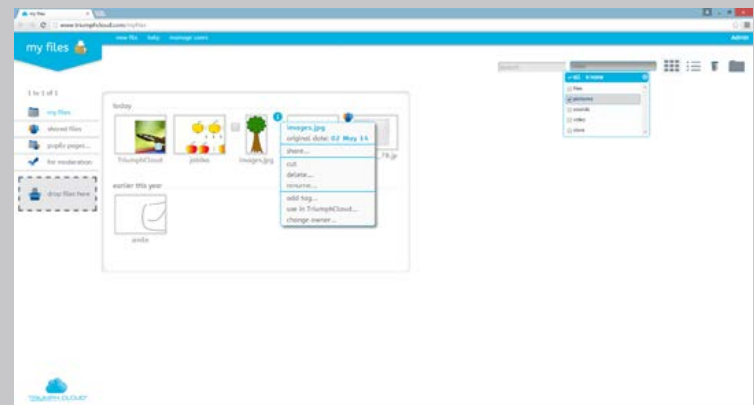
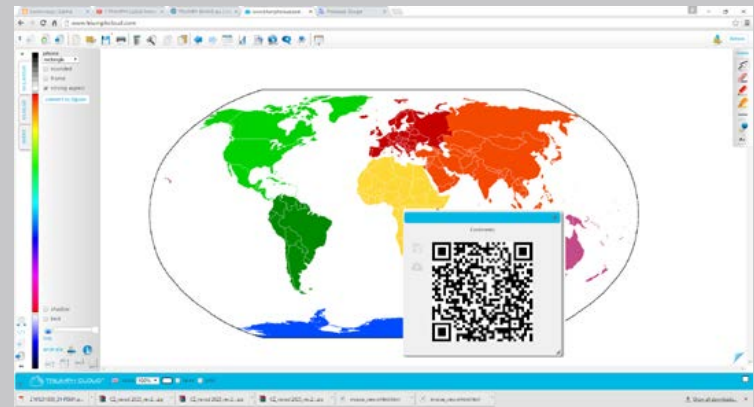
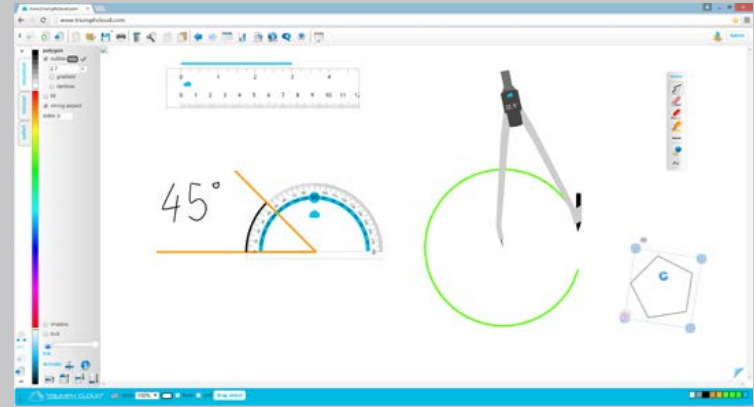
Online Annotation

TRIUMPH CLOUD is unique online annotation software that runs on all interactive whiteboards, interactive LED LCDs, interactive projectors, tablets and other systems using latest web technologies. TRIUMPH CLOUD can always be used at any place and with any hardware and operating system (Windows, MAC OS, iOS, Android, Linux, Chrome OS, any...).

- Online (browser based)
- Hardware – independent
- No installation and automatic updates
- Latest technology
- Automatic data saving in the cloud (**my files** with **free students accounts**)
- Ease of use, mobile content
- Networking and collaboration
- Localized into 22 languages

www.triumphcloud.com

www.triumphcloud.com/myfiles





CLOUD

TRIUMPH BOARD



Software

DisplayNote

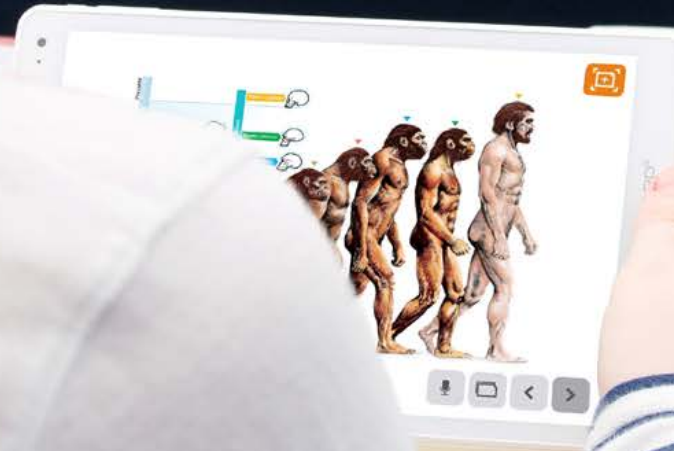
Collaboration

With DisplayNote you can capture the teacher's notes, slides, images and video in real-time on your own device. You can add your own notes and work together in real-time collaboration.

- Add written notes, post-its and references to any slide, image and video
- Share annotations with the teacher and other connected student devices
- Send private messages - the teacher can send and receive private messages to one or more participants
- DisplayNote lets teacher and students connect like never before and on the platform / device that suits them
- Works on almost any device and across all the major platforms (Windows, Android, iOS and Mac OS)



Share what's on your screen & collaborate with multiple devices, whether they're in the same room or anywhere in the world.





Interactive Whiteboards

MULTI Touch Series 78"/ 89"



- TRIUMPH CLOUD (USB Bundle Edition)
online annotation software
- TRIUMPH CLOUD My Files
cloud data storage, **free for students**
- DisplayNote
collaboration software (cloud)



Interactive whiteboards with a ceramic steel surface
and slim design

IR Cell LED optical technology

Windows, Mac and Linux compatible

Connection to any computer via USB

6-touch input

Low glare porcelain enameled e3 steel surface

Ecological, antibacterial and anti-vandal with cradle to cradle certification surface

Multipurpose – allows the use of traditional dry erase markers

Hotkey strips for software tools shortcuts



Accessories

MT Speakers



40W sound bars for MULTI Touch interactive whiteboards

- 1x SD card slot
- 2x USB output port
- Only one USB cable to PC
- No audio cable to PC required

Document Camera A405



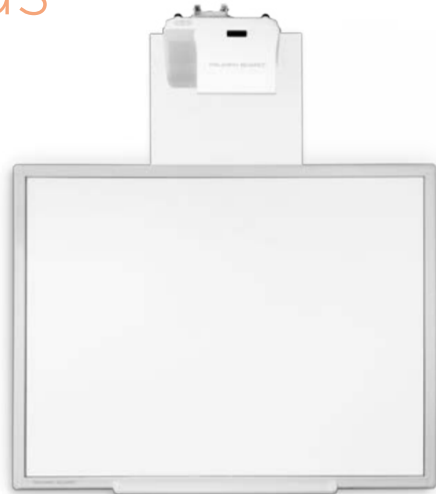
The ideal tool for image capturing and video recording



- Autofocus
- Resolution 5 Mpx
- Scans documents & 3D objects
- Records high resolution videos
- Plug-n-Play USB 2.0
- LED lights for lighting performance
- Software Image Center Pro - easy picture capture, record a video or use the OCR function for text recognition

Stands

LiftBox



The LiftBox for IWBs is the most reliable and stable product on the market for high-low adjustment (15.75" and 25.59") for whiteboards and projectors without electric power.

With a total weight capacity up to 154 lb LiftBox comes in a compact and stylish white design that is hidden behind the whiteboard. Connection Frame, Projector Plate and Optional Floor Support are part of the product range accessories.

Mobile Stand for LiftBox



The TRIUMPH BOARD Mobile Stand for LiftBox has an assembly hitch for easily adding IWBs.

The Stand also comes with wheels for easy movement, which can be easily blocked to stop the Stand moving. The TRIUMPH BOARD Mobile Stand for the LiftBox is designed to provide a high level of convenience as well as smooth attachment of an IWB throughout its lifespan.

Which one is called the king of animals?



A
snake



B
lion



C
elephant

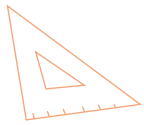


Audience Response Systems

Voting RF550*

√33

Vote everywhere and anytime with flexible interactive Wireless Audience Response Systems, fully integrated with Microsoft PowerPoint.



- TB VOTE software included
- User friendly visual working environment
- Real-time feedback
- Powerful reporting and statistics
- 1 teacher clicker and 25 student clickers (easy extendable to 500)
- LCD Display showing all inputs (RF 550 only)

* on demand model



Projectors

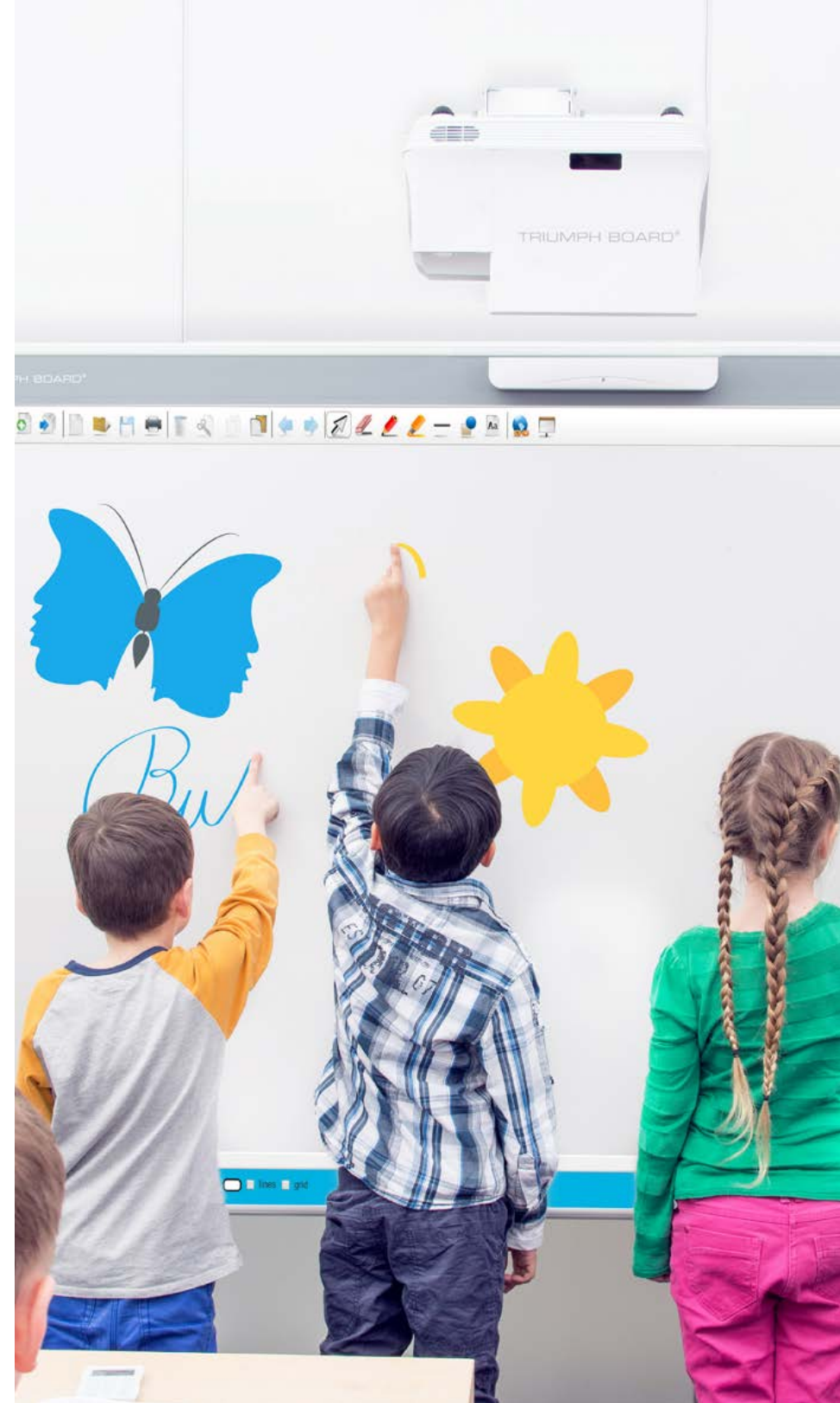
INTERACTIVE PROJECTORS

PJ3000i UST-W DLP

PJ2000i UST DLP

Multi touch technology is integrated directly into the projector. The Laser Curtain module may be easily mounted onto the standard whiteboard, creating an IR beam that covers the whole board. The IR camera integrated with the projector senses when a finger, stylus or pen touches the surface. Up to 10 touch points!

- True multi-touch (up to 10-Touch inputs)
- Laser Curtain module powered from the projector – no extra cables needed
- Ultra Short Throw Lens – position the projectors even closer to the wall, eliminating shadows of presenters
- WXGA 3500 / XGA 3000 ANSI Lumens
- BrilliantColor™ and DLP® technology by Texas Instruments
- Software: TRIUMPH CLOUD (USB Bundle Edition), DisplayNote, RM Easiteach Next Generation, MyScript Stylus

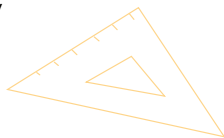


PROJECTORS PJ3000 UST-W DLP PJ2000 UST DLP



Perfect for teaching - maximize space in the classroom for teachers and students. Ultra Short Throw Lens - position the projectors even closer to the wall eliminating shadows on the screen and allowing you to present with ease.

- WXGA 3500 / XGA 3000 ANSI Lumens
- BrilliantColor™ and DLP® technology by Texas Instruments
- Contrast: 3000:1 Native, 15000:1 Hi-Contrast mode
- Future-proof technology for the classroom with 2D and 3D lessons
- Environmentally friendly



PROJECTOR PJ1000 ST DLP



Minimize distractions and maximize the impact of your presentations with an affordable short throw distance solution.

- Short Throw Lens - position the projectors closer to the wall, reducing shadows
- XGA 3000 ANSI Lumens
- Incredible contrast of 18000:1 in Hi-Contrast mode
- BrilliantColor™ and DLP® technology by Texas Instruments
- Long lamp-life: 5000 hours
- Simple to install



55"



65"



Display

55"

65"

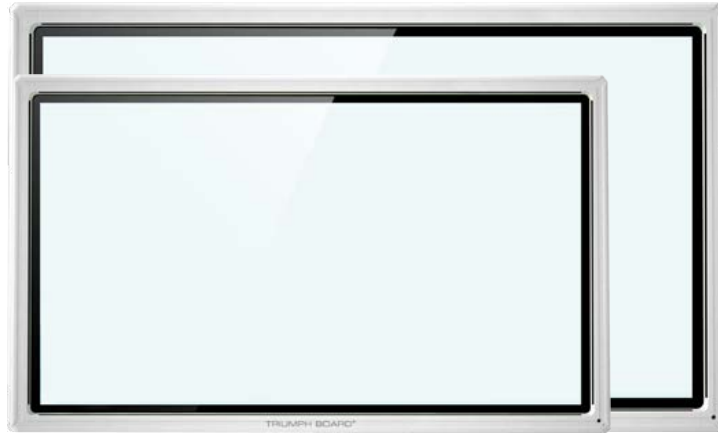
65" 4K

EAN:	8592580111891	8592580111907	8592580112027
Screen Type:	TFT LCD/A Standard/LED backlight	TFT LCD/A Standard/LED backlight	TFT LCD/A Standard/LED backlight
Resolution:	FULL HD (1920 x 1080 px)	FULL HD (1920 x 1080 px)	UHD (3840 x 2160)
Display Area:	47.62" (H) x 26.78" (V)	56.24" (H) x 31.63" (V)	1428.48 (H) x 803.52 (V) mm
Display Color:	16.77 M (8 - bit)	1.07 B (10 - bit)	1.06 B (10 - bit)
Diagonal Size:	54.63"	64.53"	64.53"
Brightness:	350 cd/m2	360 cd/m2	450 cd/m2
Contrast:	1400 : 1	4000 : 1	1400 : 1
Response Time:	6 ms (Gray to Gray)	8 ms (Gray to Gray)	5 ms (Gray to Gray)
Refreshing Frequency:	60 HZ	100 HZ/60 HZ	120 HZ
View Angle:	178°/178° (H/V)	178°/178° (H/V)	178°/178° (H/V)
Service Life:	50.000 hrs	≥ 50.000 hrs	≥ 50.000 hrs
Outline Dimension:	32.59" x 53.89" x 4.02" (WxDxH)	62.64" x 4.37" x 37.83" (WxDxH)	62.64" x 4.17" x 37.83" (WxDxH)
Package Dimension:	38.58" x 58.46" x 8.66" (WxDxH)	67.32" x 9.45" x 44.88" (WxDxH)	67.32" x 9.45" x 44.88" (WxDxH)
Net/Gross weight:	105/141 lb	158/203 lb	148/190 lb
Optional Mount System:	VESA 400 x 400	VESA 600 x 400	VESA 400 x 400
Optional Mini PC:	PC10A	PC10A	PC10A

Specifications

70"

A b c



84"

Display

70"

84" 4K

EAN:	8592580111914	8592580112140
Screen Type:	TFT LCD/A Standard/LED backlight	TFT LCD/A Standard/LED backlight
Resolution:	FULL HD (1920 x 1080 px)	UHD (3840 x 2160 px)
Display Area:	60.58" (H) x 34.08" (V)	1860.48 (H) x 1046.52(V) mm
Display Color:	1,07 B (10 - bit)	1,07 B (10 - bit)
Diagonal size:	69.51"	84.04"
Brightness:	350 cd/m2	350 cd/m2
Contrast:	4000 : 1	1600 : 1
Response Time:	4 ms	8 ms
Refreshing Frequency:	120 Hz	120 Hz
View Angle:	178°/178° (H/V)	178°/178° (H/V)
Service Life:	50.000 hrs	50.000 hrs
Outline Dimension:	67.44" x 4.52" x 40.74" (WxDxH)	78.98" x 4.22" x 46.93" (WxDxH)
Package Dimension:	72.04" x 9.65" x 47.83" (WxDxH)	85.43" x 12.59" x 57.48" (WxDxH)
Net/Gross weight:	156/207 lb	260/326 lb
Optional Mount System:	VESA 400 x 400	VESA 600 x 600
Optional Mini PC:	PC10A	PC10A





Touch System

55"/65"/70"/84"

Touch Input:	10 Touch Input
Sensing Type:	Infrared Transmission (multi-touch)
Response Time:	< 15 ms (typ)
Scan Frequency:	200 Hz
Output Coordinates:	32767 x 32767 px
Communication Mode:	Full-speed USB
Writing Facility (Single point):	Opaque objects of any diameter $\geq 5\text{mm}$
Writing Facility (Multi point):	Opaque objects of any diameter $\geq 8\text{mm}$
Writing Screen:	Mohs hardness of 7
Life Time:	> 80 000 hours

Inputs and Outputs

55"/65"/70"/84"

HDMI IN:	3 / 4*
CVBS:	1
Coaxial OUT:	1
Audio IN:	3
VGA IN:	3
AUDIO OUT:	1
Touch OUT:	1
R/L (CVBS):	1
AC IN:	1
Power:	1
VGA OUT:	1
USB 2.0:	1
USB 3.0:	1
LAN (RJ45):	1
RS232:	1

* HDMI: 1x HDMI 4K, 1x HDMI MHL, 2x HDMI
Available in models EAN 8592580112027; 8592580112140

Specifications





Power

55"/65"/70"/84"

Power Requirements:	100~240 V AC 50/60 Hz
Overall Power Consumption:	55" < 200 W
	65" < 234 W
	65" 4K < 288 W (EAN: 8592580112027)
	70" < 288 W
	84" < 500 W
Standby Power Consumption:	55" ≤ 0.5 W
	65" ≤ 0.5 W
	70" ≤ 0.5 W
	84" < 0.5 W

Sound System

55"/65"/70"/84"

Power Amplify:	2 x 10 W
Number of Sound Box:	2
Sound:	Surround

Ambient Conditions

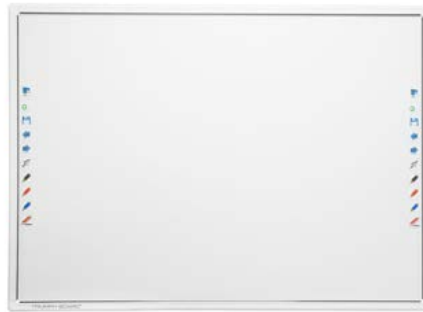
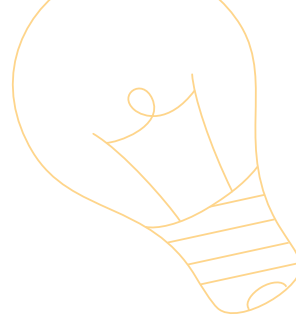
55"/65"/70"/84"

Operation Temperature:	0° – 40°C
Operation Humidity:	10 – 90% RH
Storage Temperature:	-20° – 60°C
Storage Humidity:	10 – 90% RH

ABC

Specifications

Interactive Whiteboards



	MULTI Touch 78"	MULTI Touch 89"
EAN:	8592580120008	8592580120015
Aspect Ratio:	4:3	16:10
Technology:	IR (Infrared) cell LED optical	IR (Infrared) cell LED optical
Touch Input:	6	6
Resolution:	32768 x 32768 px	32768 x 32768 px
Active Screen Area Size:	64,69" x 45,28" (78,9" diagonal)	76,18" x 45,28 (88,6 diagonal)
Projection Screen Area Size:	59,76" x 44,80"	71,25" x 44,80"
Board Size without Packing:	68,52" x 49,09" x 1,26"	80,02" x 49,11" x 1,26"
Operation Temperature:	-15 to 50 °C	-15 to 50 °C
Cable Length:	196,9"	196,85"
Response Time:	6 ms	6 ms
Interface Type:	USB 2.0	USB 2.0
Power Supply:	USB DC 5V from PC	USB DC 5V from PC
Power Consumption:	< 0.5 W	< 0.5 W
Storage Temperature:	-40 to 50°C	-40 to 50°C
Storage Humidity:	10-95%	10-95%
Platform:	Windows 10, Windows 8, Windows 7, XP and Vista, Linux, Mac	Windows 10, Windows 8, Windows 7, XP and Vista, Linux, Mac
Board Weight (NW / GW):	37,5 / 63,9 lb	44 / 70,5 lb

A B C



Document Camera A405

EAN:	8592580041099
Image Sensor:	5.0 Megapixel CMOS Color Sensor
Resolution:	2592 x 1944
Image File Format:	JPG, TIFF, BMP
Image Capture Speed:	1 second
Doc File Format:	DOC, PDF, RTF
Video File Format:	AVI, FLV
Shooting Area:	Up to A4 Size - 8.3" x 11.7"
Operating Dimensions:	12.2" x 3.5" x 13.8"
Folded Dimensions:	4.1" x 3.5" x 13.8"
Interface:	USB 2.0
Focal Length:	4" to 15"
Focus:	Autofocus
Frame Rate:	30 frames per second (max)
LED Lights:	For light compensate
Operating System:	Windows 10, Windows 8, Windows 7, XP and Vista, Android 4.0 or higher / Mac OS x 10.7 or higher
White Balance:	Auto
Effects:	Color/B&W/ Gray
Net Weight:	1.764 lb



Voting RF550

EAN:	8592580081576
Teacher and Student Keypad	
Dimensions:	2.441" x 2.165" x 0.315"
LCD Display Dimensions:	0.63" x 1.457" 1 row / 6 digits
Net Weight:	0.084 lb (with batteries)
Key Buttons:	Teacher keypad - 15 buttons Student keypad - 15 buttons
Battery Requirement:	Japanese batteries incl.
Transmission Distance:	164 ft
Power Saving Mode:	30 second go to sleep mode
Wavelength:	2.4 GHz
USB PC Receiver	
Dimensions:	2.441" x 1.181" x 0.394"
Power:	USB Port
Net Weight:	0.033 lb
Transmission Distance:	164 ft
Receiving Angle:	360°
Connection:	USB Port
RF Wavelength:	2.4 GHz
	Model on demand



Mobile Stand for LiftBox for IWB and LED LCD

EAN:	8592580083211
Designed for:	All TRIUMPH BOARD IWBs and 55" / 65" / 70" LED LCDs
Material of Stand:	275 lb
Load Capacity:	90 lb
Net Dimension of Stand:	71.06" x 26.92" x 45.15"
Gross Weight:	99 lb
Gross Dimension of Stand:	65.55" x 27.95" x 7.28"
Lift:	15.74" (combined with LiftBox for LED LCDs and IWBs)



LiftBox for IWBs

EAN:	8592580082788
Designed for:	All TRIUMPH BOARD IWBs
Material of Stand:	Stainless steel
Net Weight:	52 lb
Net Dimension of Stand:	41.02" x 21.89" x 2.99"
Gross Weight:	55 lb
Gross Dimension of Stand:	42.76" x 24.02" x 3.74"
Lift:	15.75"
Max. load:	154 lb

Specifications

Projectors

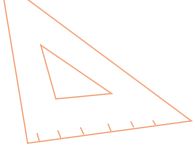


	PJ3000i UST-W DLP	PJ2000i UST DLP
EAN:	8592580081996	8592580082030
Display Technology:	Ultra Short Throw lens. Single 0.65" WXGA S450DMD + DDP4421 chip DLP Technology by Texas Instruments	Ultra Short Throw lens. Single 0.55" XGA S450DMD + DDP4421 chip DLP Technology by Texas Instruments
Native Resolution:	WXGA 1280 x 800	XGA 1024 x 768
Brightness - BRIGHT mode:	3500 ANSI Lumens	3000 ANSI Lumens
Contrast:	3000:1 Native, 15000:1 Hi-Contrast mode	
Lamp Life:	3000 hours (normal mode) 4000 hours (eco mode)	3500 hours (normal mode) 5000 hours (eco mode)
Throw Ratio:	0.35	
Noise Level (Eco mode):	30dB	
Displayable Color:	1.07 Billion	
Projection Lens:	F/2.6; f= 0.289", Fixed Zoom	
Projection Screen Size:	70" - 100" Diagonal 16:10	60" - 90" Diagonal 4:3
Projection Distance:	23.50" - 28.78" (for 89" - 26.37")	23.50" - 28.78" (for 78" - 27.21")
Zoom Type:	Fix zoom lens	
Maximum Resolution:	UXGA 1600 x 1200	
Computer Compatibility:	UXGA, SXGA, WXGA, HD, XGA, SVGA, VGA, Mac	
Standard I/O:	VGA in x2, VGA out x1, HDMI x1, S-Video x1, Composite Video x1, Audio in -RCA (L/R) x2, Audio in - 0.138" jack x2, Audio out x1, microphone x1, Mini USB x1, RS232 D-Sub 9pin x1, DC 12V output x1	
Aspect Ratio:	16:10 Native, 16:9 / 4:3 Compatible	4:3 Native, 16:9 / 16:10 Compatible
Offset:	125%	
Horizontal Scan Rate:	15.3 - 91.1kHz	
Vertical Scan Rate:	24 - 85Hz (120Hz for 3D)	
Keystone Correction:	Vertical: - 15/+15 degree (without Auto keystone)	
Remote Control:	Universal Remote control	
Power Supply:	100-240V, 50-60Hz	
Power Consumption:	240W : 300W ± 10% at 110 VAC / 0.5W < Standby mode	
Operating Conditions:	41°F - 104°F, Max. Humidity 85%, Max. Altitude 9 843 ft	
Security:	Security Bar, Kensington Lock, Password Protection	
Basic Accessories:	AC Power Cord 7.866", VGA Cable 7.866", 2x Interactive Stylus, USB 5m Cable, Remote Control, Quick Start Card, CD User Manual, Warranty Card, Software: TB Comenius Office, MyScript Stylus, RM Easiteach Next Generation	
Optional Accessories:	Wall Mount - TRIUMPH BOARD PROJECTOR WALL MOUNT 2000/3000 Series	
RoHS:	Compliant	
Audio:	10W	
On Screen Display:	29 Languages: English (UK), Russian, Czech, Arabic, Bulgarian, Danish, Dutch, Croatian, Finnish, French, French (Canada), German, Greek, Hebrew, Hungarian, Italian, Latvian, Norwegian, Polish, Portuguese (POR), Romanian, Serbian, Slovak, Slovenian, Spanish, Spanish, (Mexico), Swedish, Turkish, Ukrainian	
Net Weight:	16.97 lb	
Gross Weight:	25.35 lb	
Dimensions (W x D x H):	14.06" x 14.45" x 5.35"	
Packing:	1 box / 20.40" x 17.91" x 13.39"	
Present Modes:		
Movie:	Maximum contrast and Color accuracy	
sRGB:	Best Color Reproduction	
User:	Memorizes user's settings	
Presentation:	Default mode, perfect with computers or notebooks	
Bright:	For environments with high ambient light (Brightest image)	
Classroom:	1500 ANSI Lumens, perfect for installations with interactive whiteboards	

Touch Interface Specifications

CMOS:	1/3", 720 x 480,60 fps
Image Size Support:	70"~100"
Number of Touch Points:	10 Multi-touch points
Calibration:	Auto calibration / manual 4 points calibration
Accuracy (Offset):	±4 pixels @ < 0.079" non-planarity 100" surface
Hover (Z-depth):	0.2" ~ 0.3" @ < 0.079" non-planarity 100" surface
Driver Installation:	Auto-installation when plug in USB cable (Windows only)
OS Support:	Windows 10, Windows 8, Windows 7, Mac OS X
Minimum Stylus Diameter:	0.3" @ 100"
Power Consumption of Curtain:	12 V/0.2A (TBD)
Laser Curtain Module Specification	
Laser Curtain:	IR Laser 830nm, 20,000 hours
Distance of Curtain to Screen:	0.79"
Whiteboard Non-Planarity:	< 0.079"
Environment / Safety	
Laser Safety:	Class-1 @ 100"
Operation Temperature:	32° F ~ +104° F (without cooling fan)
Storage Temperature:	14° F ~ +140° F



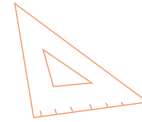


	PJ3000 UST-W DLP	PJ2000 UST DLP	PJ1000 ST DLP
EAN:	8592580081989	8592580081972	8592580082009
Display Technology:	Ultra Short Throw lens, Single 0.65" WXGA S450DMD + DDP4421 chip DLP Technology by Texas Instruments	Ultra Short Throw lens, Single 0.55" XGA S450DMD + DDP4421 chip DLP Technology by Texas Instruments	Short Throw lens, Single 0.55" XGA S450DMD + DDP2431 chip DLP Technology by Texas Instruments
Native Resolution:	WXGA 1280 x 800	XGA 1024 x 768	XGA 1024 x 768
Brightness - BRIGHT mode:	3500 ANSI Lumens	3000 ANSI Lumens	3000 ANSI Lumens
Contrast:	3000:1 Native, 15000:1 Hi-Contrast mode	3000:1 Native, 18000:1 Hi-Contrast mode	3000:1 Native, 18000:1 Hi-Contrast mode
Lamp Life:	3000 hours (normal mode) 4000 hours (eco mode)	3500 hours (normal mode) 5000 hours (eco mode)	3500 hours (normal mode), 5000 hours (eco mode)
Throw Ratio:	0.35		0.62
Noise Level (Eco mode):	30dB		30dB
Displayable Color:	1.07 Billion		1.07 Billion
Projection Lens:	F/2.6; f=0.289", Fixed Zoom		F/2.8; f=0.286", Fixed Zoom
Projection Screen Size:	70" - 100" Diagonal 16:10	60" - 90" Diagonal 4:3	60" - 90" Diagonal 4:3
Projection Distance:	23.50" - 28.78" (for 89" - 26.37")	23.50" - 28.78" (for 78" - 27.21")	29.53"-43.31" (for 78" - 41.34")
Zoom Type:	Fix zoom lens		Fix zoom lens
Maximum Resolution:	UXGA 1600 x 1200		UXGA 1600 x 1200
Computer Compatibility:	UXGA, SXGA, WXGA, HD, XGA, SVGA, VGA, Mac		UXGA, SXGA, WXGA, HD, XGA, SVGA, VGA, Mac
Standard I/O:	VGA in x2, VGA out x1, HDMI x1, S-Video x1, Composite Video x1, Audio in -RCA (L/R) x2, Audio in - 0.138" jack x2, Audio out x1, microphone x1, Mini USB x1, RS232 D-Sub 9pin x1, DC 12V output x1		VGA in x2, VGA out x1, HDMI x1, S-Video x1, RJ45 x1, Composite Video x1, Audio in - 0.138" jack x1, Audio out x1, USB typ B x1, RS232 D-Sub 9pin x1
Aspect Ratio:	16:10 Native, 16:9 / 4:3 Compatible	4:3 Native, 16:9 / 16:10 Compatible	4:3 Native, 16:9/16:10 Compatible
Offset:	125%		115% ± 5%
Horizontal Scan Rate:	15.3 - 91.1kHz		15.3 - 91.1kHz
Vertical Scan Rate:	24 - 85Hz (120Hz for 3D)		24 - 85Hz (120Hz for 3D)
Keystone Correction:	Vertical: - 15/+15 degree		± 15° Vertical
Remote Control:	Universal Remote control		Universal Remote control
Power Supply:	100-240V, 50-60Hz		100-240V, 50-60Hz
Power Consumption:	240W : 300W ± 10% at 110 VAC / 0.5W < Standby mode		240W - 300W ± 10% at 110 VAC / < 0.5 Standby mode
Operating Conditions:	41°F - 104°F, Max. Humidity 85%, Max. Altitude 9 843 ft		41°F - 104°F, Max. Humidity 85%, Max. Altitude 3 281 ft
Security:	Security Bar, Kensington Lock, Password Protection		Security Bar, Kensington Lock, Password Protection
Basic accessories in the box:	AC Power Cord 7.866", VGA Cable 7.866", Remote Control, Quick Start Card, CD User Manual, Warranty Card		AC Power Cord 7.866", VGA Cable 7.866", Remote Control, Quick Start Card, CD User Manual, Warranty Card
Optional Accessories:	Wall Mount - TRIUMPH BOARD PROJECTOR WALL MOUNT 2000/3000 Series		Wall Mount
RoHS:	Compliant		Compliant
Audio:	10W		2W
On Screen Display:	29 Languages: English (UK), Russian, Czech, Arabic, Bulgarian, Danish, Dutch, Croatian, Finnish, French, French (Canada), German, Greek, Hebrew, Hungarian, Italian, Latvian, Norwegian, Polish, Portuguese (POR), Romanian, Serbian, Slovak, Slovenian, Spanish, Spanish, (Mexico), Swedish, Turkish, Ukrainian		
Net Weight:	16.53 lb		5.95 lb
Gross Weight:	22.5 lb		9.92 lb
Dimensions (W x D x H):	14.06" x 14.45" x 5.35"		11.18" x 8.74" x 2.99"
Packing:	1 box / 20.40" x 17.91" x 13.39"		1 box / 16.46" x 12.99" x 5.79"

Present Modes:

Movie:	Maximum contrast and color accuracy
sRGB:	Best color reproduction
User:	Memorizes user's settings
Presentation:	Default mode, perfect with computers or notebooks
Bright:	For environments with high ambient light (Brightest image)
Classroom:	1500 ANSI Lumens, perfect for installations with interactive whiteboards





Contact:

3+1

info@triumphboard.com

www.triumphboard.com

www.youtube.com/triumphboard

$\sqrt{33}$



Abc