

BENEFITS

Best Uses

For customers that manage their own battery maintenance program, have multiple battery technologies or used in parallel with a third-party service plan.

Built on Technology with Scalability and Flexibility

- Web browser functionality with no platform or OS dependencies
- Tablet compatible - iOS, Android
- Supports new and legacy Albér battery monitoring platforms
- Supports Cellcorder, CVR+ and Hydrometer Portable Products
- Quick and easy installation using Wizards and existing database import functions
- Server application, scaled based on battery string count
- Software service program to maintain optimal performance

Features:

- System view providing summary, status, and navigation
- Battery view with voltage, currents and temperature parameters
- Battery multi-string graphical viewing and trending
- Graphical alarm management with point and click filtering
- Probability cause and corrective action analysis
- Historical data collection and trending
- System e-mail notifications
- Discharge playback



Product Description

A web-based monitoring platform for managing collective data from Albér stationary and portable monitoring devices as well as Lithium Ion batteries.

The Albér® Battery Xplorer Enterprise has an intuitive user interface permitting easy review of battery condition and analysis along with probable cause and corrective actions of alarm conditions. The highly intuitive tool will aggregate all your battery data in one database from multiple monitoring product architectures and battery chemistries to streamline user experience and learning curves. Essentially, only one software tool is needed to manage all your battery test programs.

Albér is about integrity, reliability and product innovation. It is our experience and proven technology that make the difference between unexpected failure and continued success!

Monitoring Lithium Ion Batteries

Lithium Ion battery chemistry has emerged as the latest UPS energy-storage innovation. Understanding the battery's ability to perform, is critical in data center applications. With the Albér Battery Xplorer Enterprise Lithium Ion software module, the capabilities are extended to aggregate data from Lithium Ion batteries for status and analysis. As a result, the Albér software can monitor Lithium Ion, lead acid and nickel cadmium batteries as a single user interface, providing predictive analysis of pending battery failure.

One Battery Xplorer Enterprise Lithium Ion software module is required per license.



Specifications subject to change without notice

System specifications

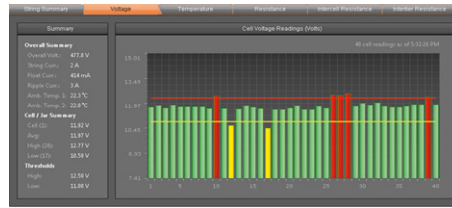
Albér® Battery Xplorer Enterprise Client Supported Platforms

The Albér Battery Xplorer Enterprise monitoring application supports the following client platforms:

- Windows and MAC
- Linux
- Tablets that Support Android, iOS, and Windows Tablet Operating Systems

The Albér Battery Xplorer Enterprise monitoring application supports any of the following Web Browsers:

- Microsoft Internet Explorer version 11.0 or above
- Google Chrome Version 20 or above (Preferred)
- Safari Version 5.1 or above
- Firefox Version 13 or above



String View

Albér Battery Xplorer Enterprise Hardware and Software System Requirements

The following list provides a general guidance on Albér Battery Xplorer Enterprise System hardware requirements:

- Processor - Pentium 4 or better
- RAM - 2 GB
- Software Disk Space - approximately 500 MB or more
- Database Disk Space - 5 GB or more
- Network Topology - Ethernet 100 Mbps, Windows 7, Windows Server 2008 or better

Albér Battery Xplorer Infrastructure

