

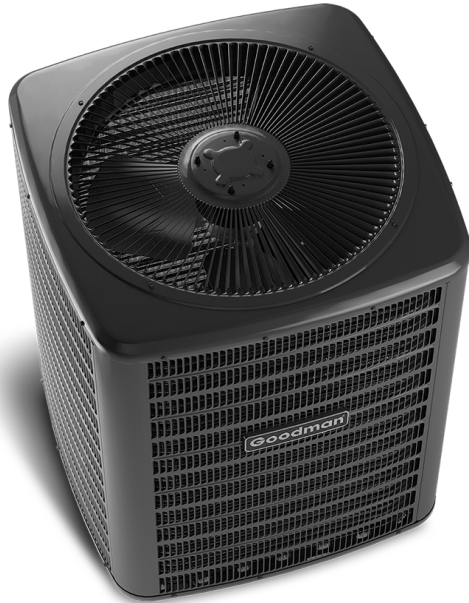


Air Conditioning & Heating

# GSX14

COOLING CAPACITY : 18,000 - 60,000 BTU/H

## ENERGY-EFFICIENT SPLIT SYSTEM AIR CONDITIONER UP TO 15 SEER & 12.5 EER



### Contents

|                             |    |
|-----------------------------|----|
| Nomenclature.....           | 2  |
| Product Specifications..... | 3  |
| Expanded Cooling Data.....  | 5  |
| Performance Data.....       | 29 |
| AHRI Ratings.....           | 31 |
| Wiring Diagrams.....        | 72 |
| Dimensions.....             | 74 |
| Accessories.....            | 74 |

### Standard Features

- Energy-efficient compressor
- Single-speed condenser fan motor
- Factory-installed filter drier
- Copper tube/aluminum fin coil
- Service valves with sweat connections and easy-access gauge ports
- Contactor with lug connection
- Ground lug connection
- AHRI Certified; ETL Listed

### Cabinet Features

- Heavy-gauge galvanized-steel cabinet with a louvered sound control top
- Attractive Architectural Gray powder-paint finish with 500-hour salt-spray approval
- Steel louver coil guard
- Top and side maintenance access
- Single-panel access to controls with space provided for field-installed accessories
- When properly anchored, meets the 2010 Florida Building Code unit integrity requirements for hurricane-type winds (Anchor bracket kits available.)



\* Complete warranty details available from your local dealer or at [www.goodmanmfg.com](http://www.goodmanmfg.com). To receive the 10-Year Parts Limited Warranty, online registration must be completed within 60 days of installation. Online registration is not required in California or Quebec.

|                         | <u>G</u>           | <u>S</u> | <u>X</u>   | <u>14</u>  | <u>036</u>   | <u>1</u> | <u>AA</u>                         |                               |
|-------------------------|--------------------|----------|------------|------------|--------------|----------|-----------------------------------|-------------------------------|
|                         | <u>1</u>           | <u>2</u> | <u>3</u>   | <u>4,5</u> | <u>6,7,8</u> | <u>9</u> | <u>10,11</u>                      |                               |
| <b>Brand</b>            | G Goodman® Brand   |          |            |            |              |          | <b>Engineering *</b>              |                               |
|                         |                    |          |            |            |              |          | Major & Minor revisions           |                               |
|                         |                    |          |            |            |              |          | * Not used for inventory control. |                               |
| <b>Product Category</b> | S Split System     |          |            |            |              |          |                                   | <b>Electrical</b>             |
|                         |                    |          |            |            |              |          |                                   | 1 - 208/230 V, 1 Phase, 60 Hz |
| <b>Unit Type</b>        | X Condenser R-410A |          |            |            |              |          |                                   | <b>Capacity</b>               |
|                         | Z Heat Pump R-410A |          |            |            |              |          |                                   | 018 - 1½ tons                 |
|                         |                    |          |            |            |              |          |                                   | 030 - 2½ tons                 |
|                         |                    |          |            |            |              |          |                                   | 042 3½ Tons                   |
|                         |                    |          |            |            |              |          |                                   | 019 - 1½ tons                 |
|                         |                    |          |            |            |              |          |                                   | 031 - 2½ tons                 |
|                         |                    |          |            |            |              |          |                                   | 043 3½ Tons                   |
|                         |                    |          |            |            |              |          |                                   | 024 - 2 tons                  |
|                         |                    |          |            |            |              |          |                                   | 036 - 3 tons                  |
|                         |                    |          |            |            |              |          |                                   | 048 4 Tons                    |
|                         |                    |          |            |            |              |          |                                   | 025 - 2 tons                  |
|                         |                    |          |            |            |              |          |                                   | 037 - 3 tons                  |
|                         |                    |          |            |            |              |          |                                   | 060 5 Tons                    |
| <b>Efficiency</b>       | 13 13 SEER         |          | 16 16 SEER |            |              |          |                                   |                               |
|                         | 14 14 SEER         |          | 18 18 SEER |            |              |          |                                   |                               |

|   | GSX14<br>0181L* | GSX14<br>0191K* | GSX14<br>0241L* | GSX14<br>0251L* | GSX14<br>0301L* | GSX14<br>0311K* |
|---|-----------------|-----------------|-----------------|-----------------|-----------------|-----------------|
| <b>CAPACITIES</b>                         |                 |                 |                 |                 |                 |                 |
| Max Cooling (BTU/h)                       | 18,000          | 18,000          | 24,000          | 24,000          | 30,000          | 30,000          |
| SEER/EER                                  | 14 / 12         | 14 / 12.2       | 14 / 12         | 14 / 12.2       | 14 / 12.0       | 14 / 12.2       |
| Decibels                                  | 72              | 71              | 74              | 71              | 74              | 72              |
| <b>COMPRESSOR</b>                         |                 |                 |                 |                 |                 |                 |
| RLA                                       | 6.0             | 9.0             | 7.7             | 13.5            | 10.5            | 12.8            |
| LRA                                       | 37.5            | 47.5            | 38.0            | 58.3            | 47.0            | 67.8            |
| <b>CONDENSER FAN MOTOR</b>                |                 |                 |                 |                 |                 |                 |
| Hp  | 1/8             | 1/8             | 1/8             | 1/8             | 1/6             | 1/6             |
| FLA                                       | 0.7             | 0.7             | 0.7             | 0.7             | 0.95            | 0.95            |
| <b>REFRIGERATION SYSTEM</b>               |                 |                 |                 |                 |                 |                 |
| Refrigerant Line Size <sup>1</sup>        |                 |                 |                 |                 |                 |                 |
| Liquid Line Size ("O.D.)                  | 3/8"            | 3/8"            | 3/8"            | 3/8"            | 3/8"            | 3/8"            |
| Suction Line Size ("O.D.)                 | 3/4"            | 3/4"            | 3/4"            | 3/4"            | 3/4"            | 3/4"            |
| Refrigerant Connection Size               |                 |                 |                 |                 |                 |                 |
| Liquid Valve Size ("O.D.)                 | 3/8"            | 3/8"            | 3/8"            | 3/8"            | 3/8"            | 3/8"            |
| Suction Valve Size ("O.D.) <sup>2 3</sup> | 3/4"            | 3/4"            | 3/4"            | 3/4"            | 3/4"            | 3/4"            |
| Valve Type                                | Sweat           | Sweat           | Sweat           | Sweat           | Sweat           | Sweat           |
| Charge                                    | 75              | 68              | 72              | 75              | 85              | 90              |
| Included piston:                          | 0.051           | 0.053           | 0.057           | 0.057           | 0.067           | 0.063           |
| <b>ELECTRICAL DATA</b>                    |                 |                 |                 |                 |                 |                 |
| Voltage-Phase (60 Hz)                     | 208/230-1       | 208/230-1       | 208/230-1       | 208/230-1       | 208/230-1       | 208/230-1       |
| Minimum Circuit Ampacity <sup>4</sup>     | 8.2             | 12              | 10.3            | 17.6            | 14.1            | 17.0            |
| Max. Overcurrent Protection <sup>5</sup>  | 15 amps         | 20 amps         | 15 amps         | 30 amps         | 20 amps         | 25 amps         |
| Min/Max Volts                             | 197/253         | 197/253         | 197/253         | 197/253         | 197/253         | 197/253         |
| Conduit                                   | 1/2" or 3/4"    | 1/2" or 3/4"    | 1/2" or 3/4"    | 1/2" or 3/4"    | 1/2" or 3/4"    | 1/2" or 3/4"    |
| <b>EQUIPMENT WEIGHT</b>                   | 126             | 131             | 126             | 136             | 193             | 162             |
| <b>SHIPPING WEIGHT</b>                    | 141             | 146             | 141             | 153             | 211             | 180             |

<sup>1</sup> Line sizes denoted for 25' line sets, tested and rated in accordance with AHRI Standard 210/240.

For other line-set lengths or sizes, refer to the installation & Operating instructions and/or the long line-set guidelines.

<sup>2</sup> Installer will need to supply 3/4" to 3/8" adapters for suction line connections.

<sup>3</sup> Installer will need to supply 3/8" to 1/2" adapters for suction line connections.

<sup>4</sup> Wire size should be determined in accordance with National Electrical Codes; extensive wire runs will require larger wire sizes

<sup>5</sup> Must use time-delay fuses or HACR-type circuit breakers of the same size as noted.

**NOTES**

- Always check the S&R plate for electrical data on the unit being installed.
- Unit is charged with refrigerant for 15' of 3/8" liquid line. System charge must be adjusted per Installation Instructions Final Charge Procedure.

PRODUCT SPECIFICATIONS (CONT.)

|   | GSX14<br>0361K* | GSX14<br>0371K* | GSX14<br>0421K* | GSX14<br>0431K* | GSX14<br>0481K* | GSX14<br>0601K* |
|---|-----------------|-----------------|-----------------|-----------------|-----------------|-----------------|
| <b>CAPACITIES</b>                         |                 |                 |                 |                 |                 |                 |
| Nom Cool (BTU/h)                          | 36,000          | 36,000          | 42,000          | 42,000          | 48,000          | 60,000          |
| SEER/EER                                  | 14 / 12         | 14 / 12.2       | 14 / 12         | 14 / 12.2       | 14 / 11.7       | 14 / 11.7       |
| Decibels                                  | 73              | 73              | 73              | 73              | 74              | 75              |
| <b>COMPRESSOR</b>                         |                 |                 |                 |                 |                 |                 |
| RLA                                       | 14.1            | 14.1            | 16.7            | 16.7            | 19.9            | 25.0            |
| LRA                                       | 77              | 72.2            | 79              | 79              | 109             | 134             |
| <b>CONDENSER FAN MOTOR</b>                |                 |                 |                 |                 |                 |                 |
| Hp  | 1/6             | 1/6             | 1/6             | 1/6             | 1/4             | 1/4             |
| FLA                                       | 0.95            | 0.95            | 0.95            | 0.95            | 1.5             | 1.5             |
| <b>REFRIGERATION SYSTEM</b>               |                 |                 |                 |                 |                 |                 |
| Refrigerant Line Size <sup>1</sup>        |                 |                 |                 |                 |                 |                 |
| Liquid Line Size ("O.D.)                  | 3/8"            | 3/8"            | 3/8"            | 3/8"            | 3/8"            | 3/8"            |
| Suction Line Size ("O.D.)                 | 7/8"            | 7/8"            | 1 1/8"          | 1 1/8"          | 1 1/8"          | 1 1/8"          |
| Refrigerant Connection Size               |                 |                 |                 |                 |                 |                 |
| Liquid Valve Size ("O.D.)                 | 3/8"            | 3/8"            | 3/8"            | 3/8"            | 3/8"            | 3/8"            |
| Suction Valve Size ("O.D.) <sup>2 3</sup> | 3/4"            | 3/4"            | 7/8"            | 7/8"            | 7/8"            | 7/8"            |
| Valve Type                                | Sweat           | Sweat           | Sweat           | Sweat           | Sweat           | Sweat           |
| Charge                                    | 81              | 81              | 93              | 93              | 101             | 120             |
| Included piston:                          | 0.068           | 0.071           | 0.074           | 0.074           | 0.078           | 0.088           |
| <b>ELECTRICAL DATA</b>                    |                 |                 |                 |                 |                 |                 |
| Voltage-Phase (60 Hz)                     | 208/230-1       | 208/230-1       | 208/230-1       | 208/230-1       | 208/230-1       | 208/230-1       |
| Minimum Circuit Ampacity <sup>4</sup>     | 18.6            | 18.6            | 21.8            | 21.8            | 26.4            | 32.8            |
| Max. Overcurrent Protection <sup>5</sup>  | 30 amps         | 30 amps         | 35 amps         | 35 amps         | 45 amps         | 50 amps         |
| Min/Max Volts                             | 197/253         | 197/253         | 197/253         | 197/253         | 197/253         | 197/253         |
| Conduit                                   | 1/2" or 3/4"    | 1/2" or 3/4"    | 1/2" or 3/4"    | 1/2" or 3/4"    | 1/2" or 3/4"    | 1/2" or 3/4"    |
| <b>EQUIPMENT WEIGHT</b>                   | 162             | 162             | 189             | 189             | 220             | 260             |
| <b>SHIPPING WEIGHT</b>                    | 180             | 180             | 207             | 207             | 242             | 280             |

<sup>1</sup> Line sizes denoted for 25' line sets, tested and rated in accordance with AHRI Standard 210/240.  
For other line-set lengths or sizes, refer to the installation & Operating instructions and/or the long line-set guidelines.

<sup>2</sup> Installer will need to supply 3/4" to 7/8" adapters for suction line connections.

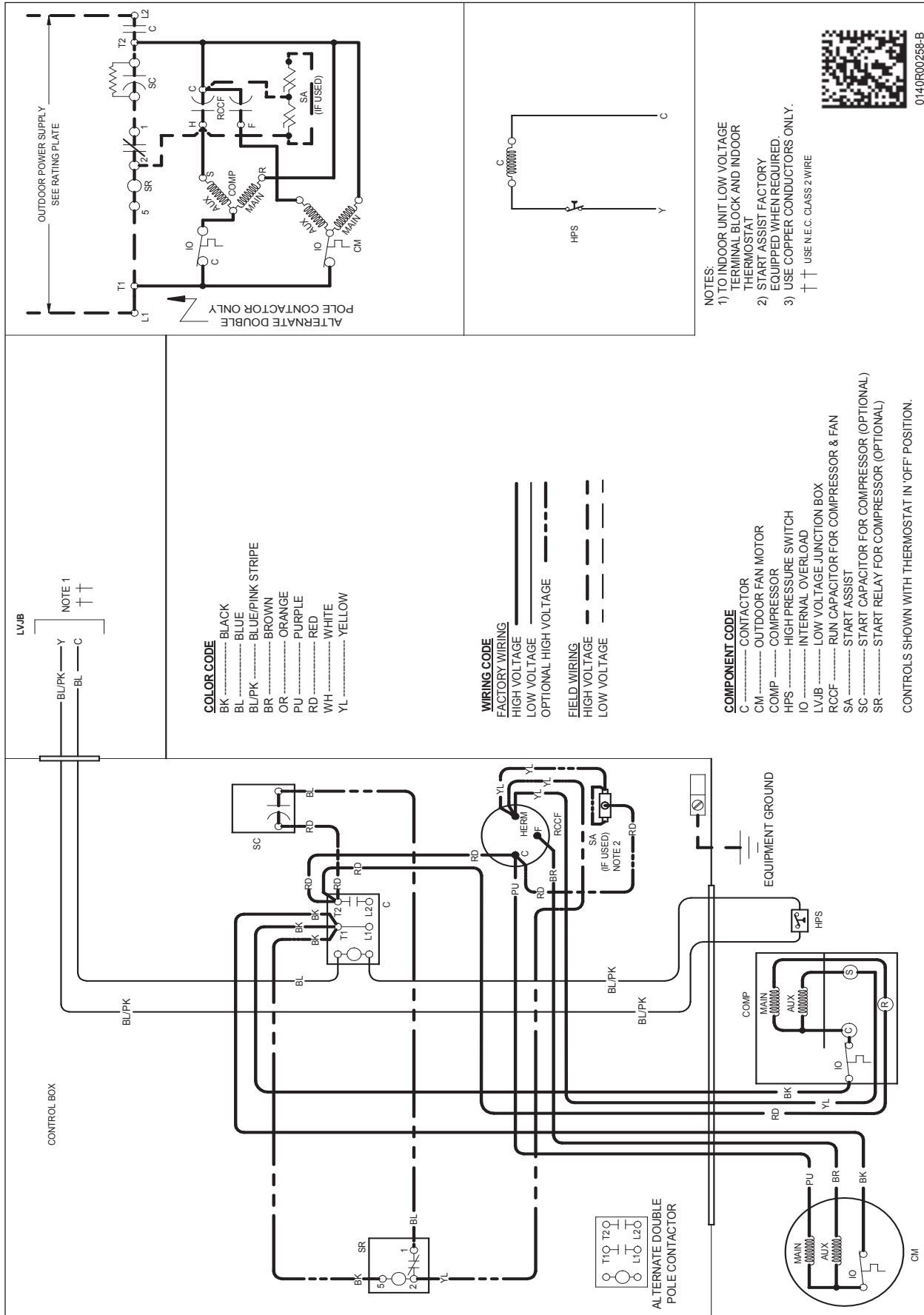
<sup>3</sup> Installer will need to supply 7/8" to 1 1/8" adapters for suction line connections.

<sup>4</sup> Wire size should be determined in accordance with National Electrical Codes; extensive wire runs will require larger wire sizes

<sup>5</sup> Must use time-delay fuses or HACR-type circuit breakers of the same size as noted.

**NOTES**

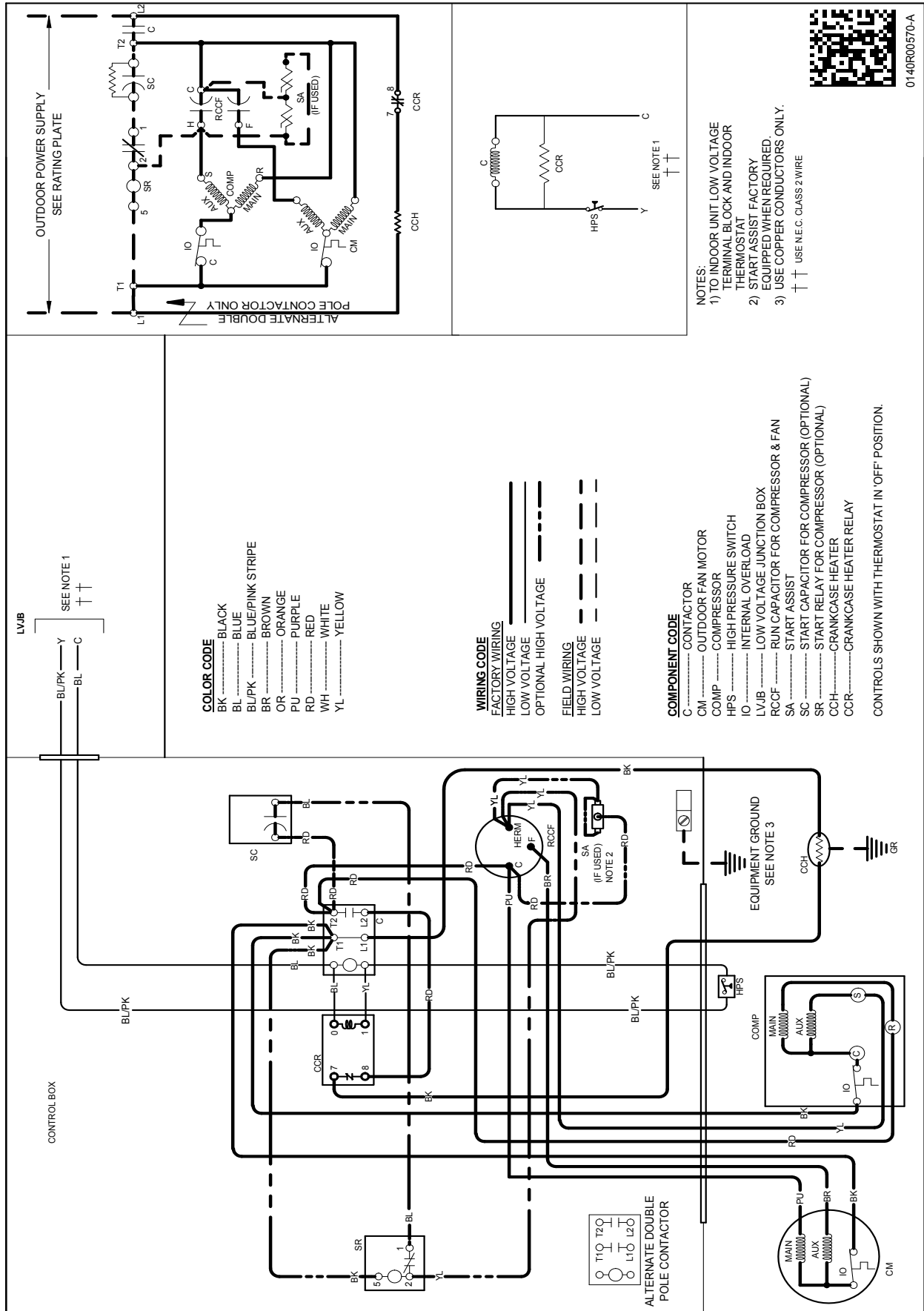
- Always check the S&R plate for electrical data on the unit being installed.
- Unit is charged with refrigerant for 15' of 3/8" liquid line. System charge must be adjusted per Installation Instructions Final Charge Procedure.



**WARNING**

High Voltage: Disconnect all power before servicing or installing this unit. Multiple power sources may be present. Failure to do so may cause property damage, personal injury, or death.

Wiring is subject to change. Always refer to the wiring diagram or the unit for the most up-to-date wiring.

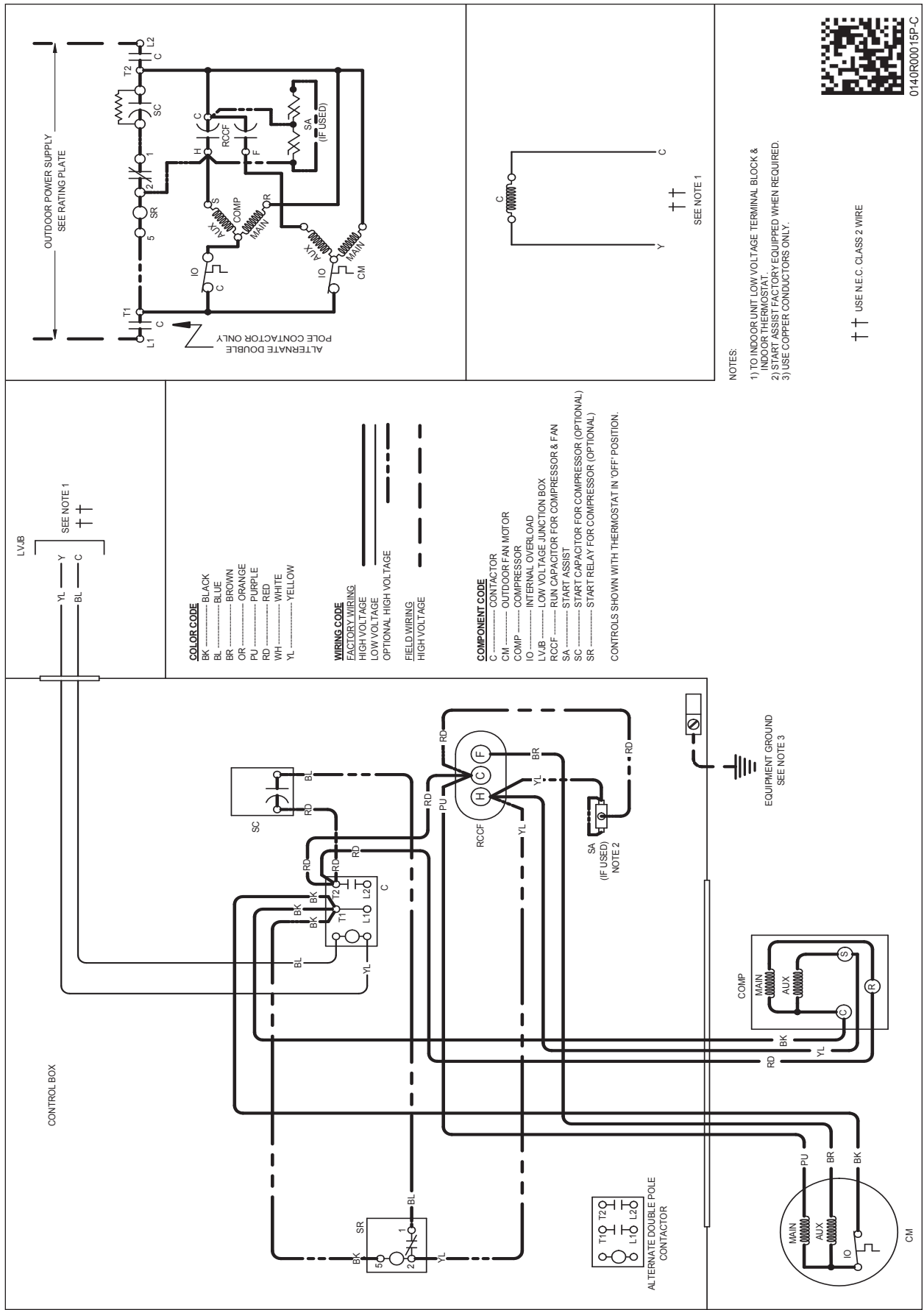


Wiring is subject to change. Always refer to the wiring diagram or the unit for the most up-to-date wiring.



**WARNING**

**High Voltage:** Disconnect all power before servicing or installing this unit. Multiple power sources may be present. Failure to do so may cause property damage, personal injury, or death.



Wiring is subject to change. Always refer to the wiring diagram or the unit for the most up-to-date wiring.

**WARNING**

**High Voltage:** Disconnect all power before servicing or installing this unit. Multiple power sources may be present. Failure to do so may cause property damage, personal injury, or death.

# DIMENSIONS

| ECN    | REV | ZONE  | DESCRIPTION     | CHK | DR | DATE |
|--------|-----|-------|-----------------|-----|----|------|
| XXXXXX | A   | XXXXX | INITIAL RELEASE | -   |    |      |

| MODEL       | DIMENSIONS |     |     |
|-------------|------------|-----|-----|
|             | W"         | D"  | H"  |
| GSX140181** | 26         | 26  | 27½ |
| GSX140191** | 26         | 26  | 27½ |
| GSX140241** | 26         | 26  | 27½ |
| GSX140251** | 26         | 26  | 32½ |
| GSX140301K* | 29         | 29  | 32½ |
| GSX140301L* | 29         | 29  | 36¾ |
| GSX140311** | 29         | 29  | 32½ |
| GSX140361** | 29         | 29  | 32½ |
| GSX140371** | 29         | 29  | 32½ |
| GSX140421** | 29         | 29  | 36¾ |
| GSX140431** | 29         | 29  | 36¾ |
| GSX140481** | 35½        | 35½ | 36¾ |
| GSX140601** | 35½        | 35½ | 38¾ |

**THE GOODMAN MANUFACTURING COMPANY, L.P.**

**GSX14**

DRIVING TO BE INTERPRETED IN ACCORDANCE WITH ASME Y14.5  
DIMENSIONS ARE IN INCHES UNLESS OTHERWISE NOTED  
TOLERANCES: ANGLES ± 1° ± 0.1°  
Ø ± 0.015  
HOLE Ø ± 0.015  
TYPICAL ± 0.005

DESIGNED BY: CL    ENG. DATE:    DO NOT SCALE DRAWING  
CHK BY:    DATE:    SHIT 1 OF 1  
REV A

SPECIAL CHARACTERISTICS: ◊ = SIGMA    ◆ = CRITICAL CHARACTERISTIC    ⬠ = SIGNIFICANT CHARACTERISTIC

COMPONENTS AND MATERIALS SPECIFIED HEREIN WILL ALSO CONFORM TO THE APPLICABLE SECTION OF GOODMAN MSP 624-01 WORKMANSHIP STANDARD FOR FIT, FEEL AND FINISH.

CONFIDENTIAL PROPERTY OF THE GOODMAN MANUFACTURING COMPANY, L.P. NOT TO BE DISCLOSED TO OTHERS, COPIED, OR USED FOR ANY PURPOSE EXCEPT AS AUTHORIZED IN WRITING. MUST BE RETURNED UPON DEMAND, ON COMPLETION OF ORDER, OR OTHER PURPOSE FOR WHICH IT WAS LOANED.

# ACCESSORIES

| MODEL #             | DESCRIPTION              | GSX14<br>018/19** | GSX14<br>024/25** | GSX14<br>030/31** | GSX14<br>036/37** | GSX14<br>042/43** | GSX14<br>048** | GSX14<br>060** |
|---------------------|--------------------------|-------------------|-------------------|-------------------|-------------------|-------------------|----------------|----------------|
| ABK-20              | Anchor Bracket Kit ^     |                   |                   | X                 | X                 | X                 | X              | X              |
| ABK-21              | Anchor Bracket Kit ^     | X                 | X                 |                   |                   |                   |                |                |
| ASC-01              | Anti-Short Cycle Kit     | X                 | X                 | X                 | X                 | X                 | X              | X              |
| CSR-U-1             | Hard-start Kit           | X                 | X                 | X                 | X                 |                   |                |                |
| CSR-U-2             | Hard-start Kit           |                   |                   |                   |                   | X                 | X              | X              |
| CSR-U-3             | Hard-start Kit           |                   |                   |                   |                   |                   | X              | X              |
| FSK01A <sup>1</sup> | Freeze Protection Kit    | X                 | X                 | X                 | X                 | X                 | X              | X              |
| LSK02A <sup>2</sup> | Liquid Line Solenoid Kit | X                 | X                 | X                 | X                 | X                 | X              | X              |
| LAKT01A             | Low-Ambient Kit          | X                 | X                 | X                 | X                 | X                 | X              | X              |
| 0130R00000S         | Low-Pressure Switch Kit  | X                 | X                 | X                 | X                 | X                 | X              | X              |
| TX2N4 <sup>2</sup>  | TXV Kit                  | X                 |                   |                   |                   |                   |                |                |
| TX2N4A <sup>2</sup> | TXV Kit                  | X                 | X                 |                   |                   |                   |                |                |
| TX3N4 <sup>2</sup>  | TXV Kit                  |                   |                   | X                 | X                 |                   |                |                |
| TX5N4 <sup>2</sup>  | TXV Kit                  |                   |                   |                   |                   | X                 | X              | X              |

<sup>^</sup> Contains 20 brackets; four brackets needed to anchor unit to pad

<sup>1</sup> Installed on indoor coil

<sup>2</sup> Field-installed, non-bleed, expansion valve kit — Condensing units and heat pumps with rotary compressors require start-assist components when used in conjunction with an indoor coil using a non-bleed thermal expansion valve refrigerant metering device.