



Air Conditioning & Heating

# DSZC18

COOLING CAPACITY: 35,000 - 57,000 BTU/H  
HEATING CAPACITY: 35,000 - 57,000 BTU/H

## SPLIT SYSTEM HEAT PUMP UP TO 18 SEER & 9.5 HSPF



### Contents

Nomenclature.....	2
Product Specifications.....	3
Expanded Cooling Data.....	4
Expanded Heating Data.....	16
AHRI Ratings.....	18
Wiring Diagram.....	23
Dimensions.....	24
Accessories.....	24

### Standard Features

- Two-Stage Copeland® UltraTech™ scroll compressor
- High-density foam compressor sound blanket
- ComfortNet™ Communications System compatible
- Expanded ComfortAlert diagnostics built in
- Set-up capable with two low-voltage wires to outdoor unit
- Diagnostic indicator lights and storage of six fault codes
- Color-coded terminal strip for non-communicating set-up
- SmartShift® technology with short-cycle protection to ensure quiet, reliable defrost
- Factory-installed bi-flow liquid-line filter drier
- Factory-installed suction-line accumulator
- Factory-installed compressor crankcase heater
- Factory-installed high-capacity muffler
- Factory-installed coil and ambient temperature sensors
- High- and low-pressure switches
- Quiet ECM-style condenser fan motor
- AHRI Certified; ETL Listed

### Cabinet Features

- Goodman® brand sound control top design
- Heavy-gauge galvanized-steel cabinet
- Appliance-quality powder-paint finish with 500-hour salt-spray approval
- Wire fan discharge grille
- Steel louver coil guard
- Baked-on powder paint finish
- Top and side maintenance access
- When properly anchored, meets the 2010 Florida Building Code unit integrity requirements for hurricane-type winds (Anchor bracket kits available.)






Proper sizing and installation of equipment is critical to achieve optimal performance. Split system air conditioners and heat pumps must be matched with appropriate coil components to meet ENERGY STAR® criteria. Ask your contractor for details or visit [www.energystar.gov](http://www.energystar.gov).



\* Complete warranty details available from your local dealer or at [www.goodmanmfg.com](http://www.goodmanmfg.com). To receive the Lifetime Compressor Limited Warranty (good for as long as you own your home), 10-Year Compressor Replacement Limited Warranty and 10-Year Parts Limited Warranty, online registration must be completed within 60 days of installation. Online registration is not required in California or Québec.

	D	S	Z	C	18	036	1	AA	
	1	2	3	4	5,6	7,8,9	10	11,12	
<b>Brand</b>	D Goodman® Brand High Feature Set								<b>Engineering *</b> Major/ Minor Revisions * Not used for order or inventory control
<b>Product Category</b>	S Split System								<b>Electrical</b> 1 - 208/230 V, 1 Phase, 60 Hz
<b>Unit Type</b>	X Condenser R-410A Z Heat Pump R-410A								<b>Nominal Capacity</b> 024 2 Tons    048 4 Tons 036 3 Tons    060 5 Tons
<b>Communication Feature</b>	C ComfortNet 4-wire communications ready								<b>Efficiency</b> 16 16 SEER    18 18 SEER    20 20 SEER

	DSZC18 0361A	DSZC18 0481A	DSZC18 0601B
<b>COOLING CAPACITY</b>			
Nominal Cooling (BTU/h)	35,000	47,000	57,000
Nominal Heating (BTU/h)	35,000	47,000	57,000
Decibels	72	73	75
<b>COMPRESSOR</b>			
RLA	15.3	21.2	28.8
LRA	83	104	152.9
<b>CONDENSER FAN MOTOR</b>			
Horsepower (RPM)	1/3	1/3	1/3
FLA	2.8	2.8	2.8
<b>REFRIGERATION SYSTEM</b>			
Refrigerant Line Size <sup>1</sup>			
Liquid Line Size ("O.D.)	3/8"	3/8"	3/8"
Suction Line Size ("O.D.)	7/8"	1 1/8"	1 1/8"
Refrigerant Connection Size			
Liquid Valve Size ("O.D.)	3/8"	3/8"	3/8"
Suction Valve Size ("O.D.)	7/8"	1 1/8"	1 1/8"
Valve Connection Type	Sweat	Sweat	Sweat
Refrigerant Charge	188	278	278
Expansion Device	TXV	TXV	TXV
Superheat at Service Valve	7-9°F	7-9°F	7-9°F
Subcooling at Service Valve			
High Stage	8-10°F	8-10°F	8-10°F
Low Stage	5-7°F	5-7°F	5-7°F
<b>ELECTRICAL DATA</b>			
Voltage-Phase-Hz	208/230-1-60	208/230-1-60	208/230-1-60
Minimum Circuit Ampacity <sup>2</sup>	21.9	29.3	38.8
Max. Overcurrent Protection <sup>3</sup>	35	50	60
Min / Max Volts	197 / 253	197 / 253	197 / 253
Electrical Conduit Size	1/2" or 3/4"	1/2" or 3/4"	1/2" or 3/4"
<b>UNIT WEIGHTS</b>			
Equipment Weight (lbs.)	246	308	314
Ship Weight (lbs)	268	330	336
<b>ENERGY STAR CERTIFIED <sup>^</sup></b>			
			

<sup>^</sup> Proper sizing and installation of equipment is critical to achieve optimal performance. Split system air conditioners and heat pumps must be matched with appropriate coil components to meet ENERGY STAR® criteria. Ask your contractor for details or visit [www.energystar.gov](http://www.energystar.gov). The [www.energystar.gov](http://www.energystar.gov) website provides up-to-date system combinations certified to meet ENERGY STAR requirements. See Page 18 for all ENERGY STAR-certified combinations as of this document's revision date.

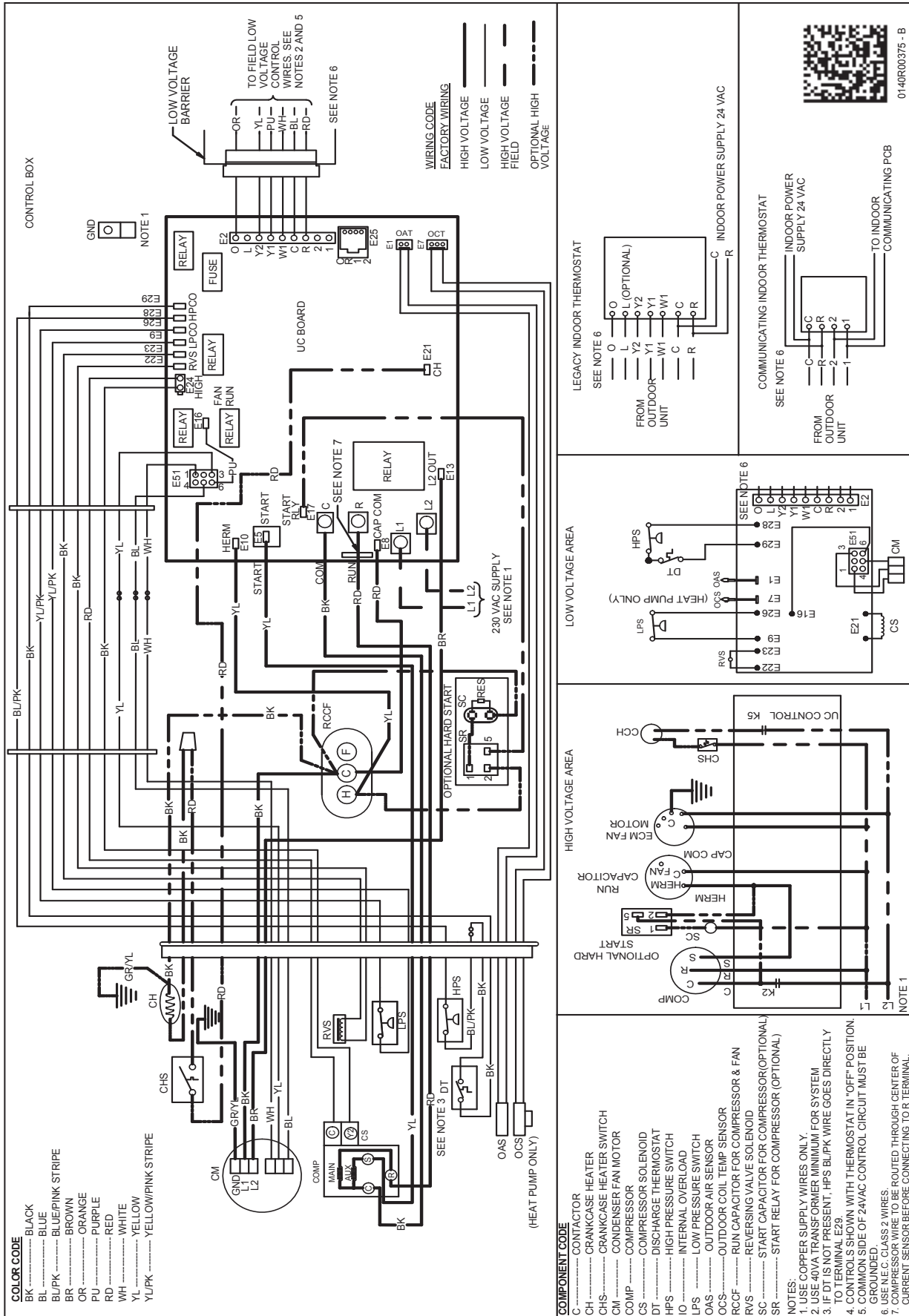
<sup>1</sup> Tested and rated in accordance with AHRI Standard 210/240

<sup>2</sup> Wire size should be determined in accordance with National Electrical Codes; extensive wire runs will require larger wire sizes

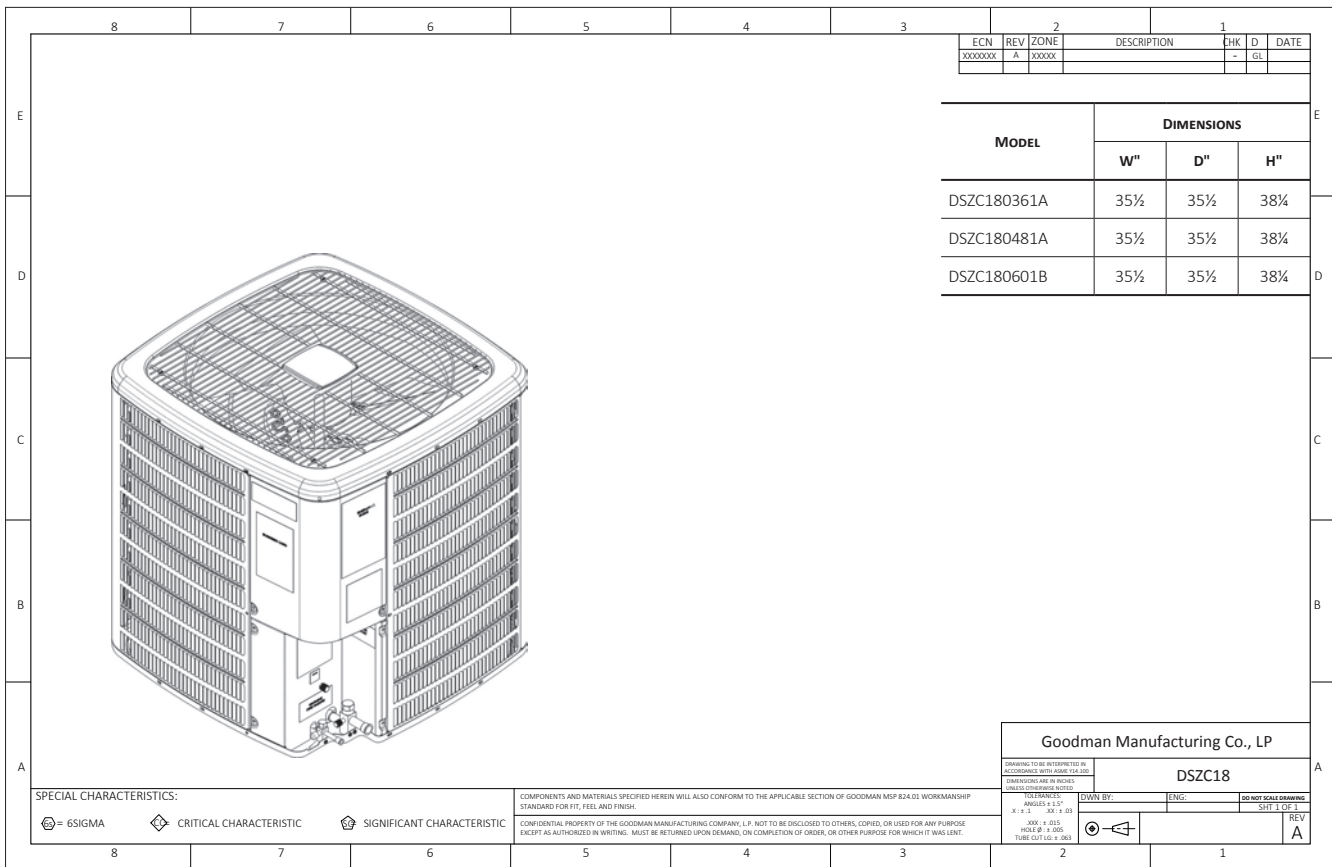
<sup>3</sup> Must use time-delay fuses or HACR-type circuit breakers of the same size as noted.

**NOTES**

- Always check the rating plate for electrical data on the unit being installed.
- Installer will need to supply 7/8" to 1 1/8" adapters for suction line connections.
- Unit is charged with refrigerant for 15' of 3/8" liquid line. System charge must be adjusted per Installation Instructions Final Charge Procedure.
- Installation of these units requires the specified TXV Kit to be installed on the indoor coil.  
THE SPECIFIED TXV IS DETERMINED BY THE OUTDOOR UNIT, NOT THE INDOOR COIL.



## DIMENSIONS



## ACCESSORIES

MODEL	DESCRIPTION	DSZC18 036**	DSZC18 048**	DSZC18 060**
ABK-20	Anchor Bracket Kit*			
B1141643 <sup>1</sup>	24V Transformer	X	X	X
CSR-U-2	Hard-start Kit	X		
CSR-U-3	Hard-start Kit		X	X
FSK01A <sup>2</sup>	Freeze Protection Kit	X	X	X
OT18-60A <sup>3</sup>	Outdoor Thermostat/Lockout Thermostat	X	X	X
TX2N4	TXV Kit			
TX2N4A	TXV Kit			
TX3N4	TXV Kit	X		
TX5N4	TXV Kit		X	X

\* Contains 20 brackets; four brackets needed to anchor unit to pad

<sup>1</sup> Available in 24V legacy mode only. This feature is integrated in the communicating mode.

<sup>2</sup> Installed on indoor coil

<sup>3</sup> Available in 24V legacy mode only. This feature is integrated in the communicating mode. Required for heat pump applications where ambient temperature falls below 0°F with 50% or higher relative humidity.

Note: Maximum number of installed accessories at the same time is limited by the size of the unit's control box.