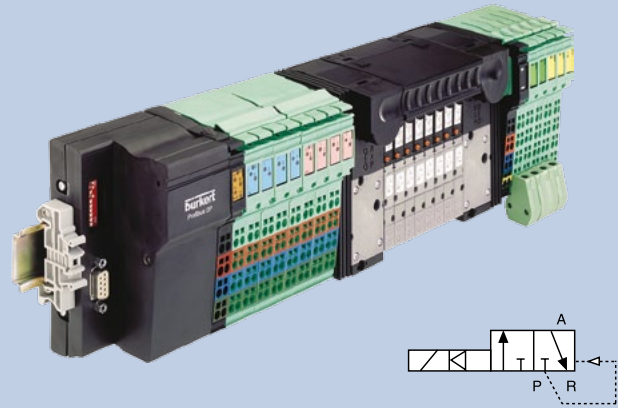


## 3/2 way or 5/2 way valves plus analog and digital I/O, bus or conventional communication

- Combines fieldbus, I/O and pneumatic pilots
- Extreme application flexibility



Stemming from our expertise in the supervision and control of complete loops AirLINE is more than a valve island. It accepts a wide array of digital and analogue field inputs and sends digital and analogue outputs for exact control where it matters.

This unique device marries virtually any combination of valve island functionality and electronic signals to the widest range of fieldbus connectivity.

AirLINE leaves the freedom to choose between electronic modules as it creates a fully integrated fieldbus communication, process valve actuation and control platform.

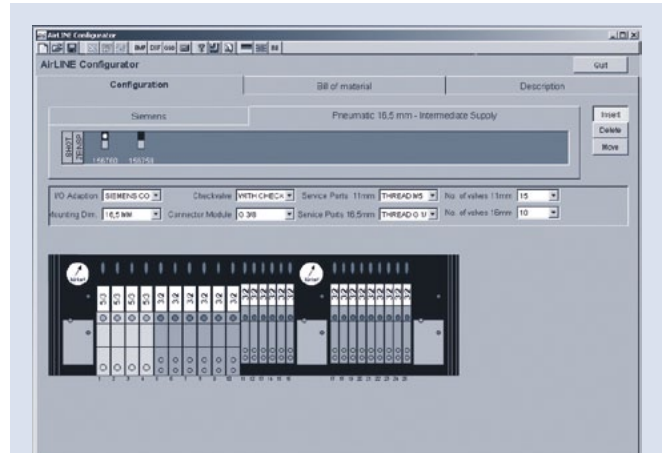
Special features make Bürkert AirLINE unique:

- Bürkert's exceptional process pneumatics designed and manufactured in Germany for valve actuation in the process environment
- Our ground-breaking modular system fit in your world and in your cabinet
- AirLINE with WAGO I/O System 750 and AirLINE with Siemens ET 200S can be used in hazardous applications in Zone 2
- With integrated P shut-off you are able to replace a valve even during operation
- Additional integrated check valves give a better protection for your installation
- Perfect process pneumatics with multiple communication possibilities

### Technical Data

<b>Body material</b>	PA (polyamide)
<b>Seal material</b>	FKM, NBR
<b>Media</b>	Lubricated and non-lubricated dry air, neutral gases (5 µm-Filter)
<b>Manual override</b>	Yes
<b>Voltage 24 V DC</b>	24 V DC
<b>Nominal power</b>	2 x 1 W
<b>Duty cycle</b>	Continuous operation (100% ED)
<b>Cv</b>	0.28 / QNn = 300l/min
<b>Pilot method</b>	Flipper pilot
<b>Circuit function</b>	C 3/2 way normally closed
<b>Pressure range</b>	36.25 - 145 PSI
<b>Orifice size</b>	4 mm
<b>Pneumatic outlet</b>	Push in 1/4" tube

### Configuration Software



AirLINE is a system of modular design which is precisely adapted to the specific requirements of the customer. Bürkert offers a software programme, the simple, precise generation of the required configuration of each AirLINE system.

The Bürkert Configurator defines

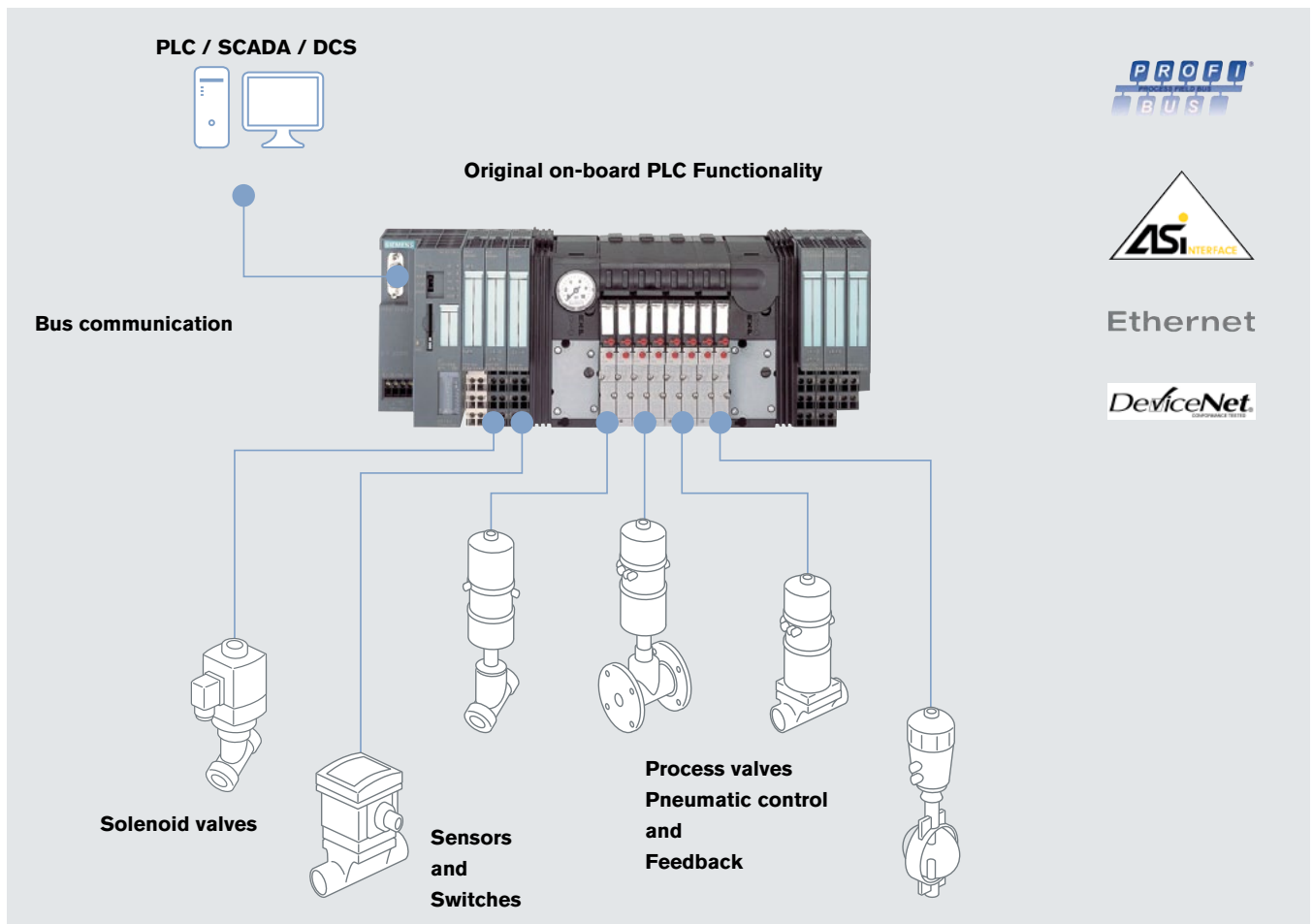
- Number and types of valves
- Type of (intermediate) supplies
- Combination of Fieldbus, pilot valves and I/O modules

The results supplied by the Configurator

- Bill of materials, incl. list prices
- Illustration
- Drawings

### Options

- Further valves
- Further digital and analog input/output slots
- Allen Bradley, Wago, Phoenix Contact, Siemens compatible islands
- Circuit function D (normally open 3/2 way valves)
- Circuit function H (5/2 way valves)
- 16mm wide valves with Cv of 0.64 / 600l/min
- Cover plates for open slots
- Fully installed in one piece cabinet



Ordering Chart

Communication	Item no. 16 valves (8 x (2 x 3/2 way)) 16 digital inputs	Item no. 24 valves (12 x (2 x 3/2 way)) 24 digital inputs
AB	219 284	219 285
Siemens	218 197	218 198
Wago	218 194	218 196
Phoenix	218 193	218 192

This chart shows only 8 simple configurations. The 8644 can be configured in a vast array of possibilities. Please visit the website for the configurators or call our experienced technical support