

EZ Mount 1

Mild Steel Weigh Modules, Rice Lake Weighing Systems



Available in configurations with three or four mounting assemblies.
Picture is a representation of actual product

The EZ Mount 1 Series weigh modules utilize the double-ended beam design with an articulating top plate to provide superior accuracy in any loading condition. The double-ended beam design means there is less cumbersome hardware and each module has a lower profile than modules of different configurations. NTEP Certified and FM approved RL70000 Series load cells give you accuracy and dependability in many applications, including intrinsically safe and explosion proof areas.



Module with RL70000 double-ended shear beam load cell.

Standard Features

- Capacities (per module): 5,000 lb-250,000 lb (2,268 kg-113,398.1 kg)
- NTEP Certified load cells
- Unique sliding pin design compensates for thermal expansion/contraction
- Self-checking
- Easy load cell replacement
- Simplified design allows bolting directly to tank and floor
- Center-loaded, double-ended shear beam design
- Low-profile design
- Painted mild steel construction

Optional Features

- Kits available with VPG® Revere 5103 load cell, capacities in 5,000 lb-150,000 lb (2,268.0 kg-68,039.0 kg)
- Refer to page 681 for shims

Applications

- Medium- to heavy-capacity tank and hopper weighing applications

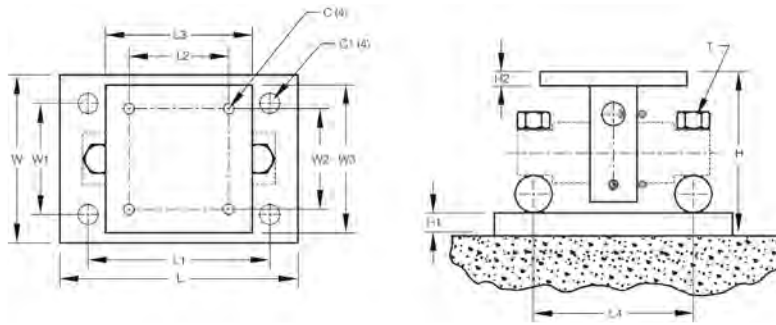
Complete Kit Includes

- One JB4SS NEMA Type 4X stainless steel signal trim junction box
- Three or four EZ Mount 1 mild steel compression mounts
- Three or four RL70000 double-ended shear beam load cells
- 25 ft of our hostile environment EL147HE SURVIVOR® load cell cable

Load Cell Certifications



Rice Lake
load cells only

**Dimensions**

Rated Capacity	C	C1	H	H1	H2	L	L1	L2	L3	L4	T	W	W1	W2	W3
lb/in															
5,000-20,000	0.56	1.06	5.31	0.75	0.50	11.00	8.00	3.00	6.00	6.87	5/8-18 UNF	7.50	4.00	3.00	6.00
30,000-60,000	0.68	1.19	8.43	1.00	0.75	15.00	11.50	5.12	8.00	8.50	1-14 UNS	10.00	6.00	5.12	8.00
100,000	0.81	1.38	10.37	1.25	1.25	18.00	14.00	7.50	10.00	9.50	1-14 UNS	12.00	9.00	7.50	10.00
150,000	0.81	1.38	10.37	1.25	1.25	18.00	14.00	7.50	10.00	9.50	1-14 UNS	12.00	9.00	7.50	10.00
200,000-250,000	1.06	1.88	16.75	2.00	2.00	26.00	20.00	9.00	12.00	13.00	1 1/2-12 UNS	12.00	6.00	9.00	12.00
kg/mm															
2,268.0-9,071.9	14.2	26.9	134.9	19.1	12.7	279.4	203.2	76.2	152.4	174.5	5/8-18 UNF	190.5	101.6	76.2	152.4
13,607.8-27,215.5	17.3	30.2	214.1	25.4	19.1	381.0	292.1	130.0	203.2	215.9	1-14 UNS	254.0	152.4	130.1	203.2
45,359.2	20.6	35.1	263.4	31.8	31.8	457.2	355.6	190.5	254.0	241.3	1-14 UNS	304.8	228.6	190.5	254.0
68,039.0	20.6	35.1	263.4	31.8	31.8	457.2	355.6	190.5	254.0	241.3	1-14 UNS	304.8	228.6	190.5	254.0
90,718.5-113,398.1	26.9	47.8	425.5	50.8	50.8	660.4	508.0	228.6	304.8	330.2	1 1/2-12 UNS	304.8	152.4	228.6	304.8

Order Information

Load Rating (Per Module)	Part #	Price
Single Module (Does NOT Include Load Cell)		
5,000 lb-20,000 lb	17823	\$295.00
30,000 lb-60,000 lb	17824	\$795.00
100,000 lb*	17850	\$1,095.00
150,000 lb	29012	\$1,095.00
200,000 lb-250,000 lb	26068	\$2,495.00
3-Module Kit		
5,000 lb	18163	\$2,875.00
10,000 lb	18164	\$2,875.00
20,000 lb	18165	\$2,875.00
30,000 lb	32164	\$4,545.00
40,000 lb	32167	\$4,545.00

*Load cell bolts protrude from bottom of base plate 0.25 in
Shims located on page 681

Load Rating (Per Module)	Part #	Price
50,000 lb	18166	\$4,545.00
60,000 lb	18167	\$4,545.00
100,000 lb*	18168	\$7,395.00
150,000 lb	43290	\$7,395.00
4-Module Kit		
5,000 lb	18169	\$3,735.00
10,000 lb	18170	\$3,735.00
20,000 lb	18171	\$3,735.00
30,000 lb	32165	\$5,765.00
40,000 lb	32166	\$5,765.00
50,000 lb	18172	\$5,765.00
60,000 lb	18173	\$5,765.00
100,000 lb*	18174	\$9,665.00
150,000 lb	43291	\$9,665.00

*Load cell bolts protrude from bottom of base plate 0.25 in
Shims located on page 681

VPG Revere® 5103 Mild Steel Order Information

Load Rating (Per Module)	Part #	Price
3-Module Kit		
5,000 lb	18175	\$2,975.00
10,000 lb	18176	\$2,975.00
20,000 lb	18177	\$2,975.00
30,000 lb	32169	\$4,645.00
40,000 lb	32171	\$4,645.00
50,000 lb	18178	\$4,795.00
60,000 lb	18179	\$4,795.00
100,000 lb*	18180	\$7,495.00
150,000 lb	18181	\$7,495.00
4-Module Kit		
5,000 lb	18182	\$3,835.00
10,000 lb	18183	\$3,835.00
20,000 lb	18184	\$3,835.00
30,000 lb	32170	\$5,865.00
40,000 lb	32172	\$5,865.00

Load Rating (Per Module)	Part #	Price
50,000 lb	18185	\$6,035.00
60,000 lb	18186	\$6,035.00
100,000 lb*	18187	\$9,765.00
150,000 lb	18188	\$9,765.00
Dummy Load Cells		
5,000 lb-20,000 lb	33749	\$75.00
30,000 lb-60,000 lb	74016	\$95.00
100,000 lb	94175	\$150.00
150,000 lb	158715	\$225.00
Grounding Kit		
5,000-60,000, includes ground strap and mounting hardware per mount	126419	\$15.45