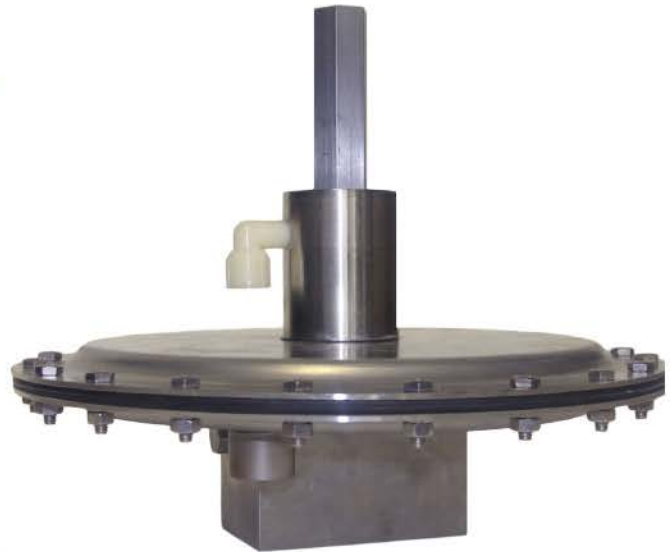


# Mark 695X Series

## Tank Blanketing Regulator 1/2"- 3/4"

The Mark 695X Series regulator was designed specifically to provide accurate pressure control on very low pressure tank blanketing systems. The Mark 695X responds to very small changes in tank pressure by throttling open or closed to maintain the desired pressure set point.

- Direct Operated
- Fully Balanced Plug
- Accurate regulation down to 1/2" wc (1.25 mbar)
- ANSI Class VI Shutoff
- Two available spring ranges
- 200 psi maximum inlet pressure
- Three Cv's (Kv's): 0.15, 0.2, 0.4 (0,13, 0,17, 0,35)
- Ultra Lightweight Diaphragm for Maximum Sensitivity



### OPTIONAL FEATURES

- Outlet Gauge
- Purge Feature
- Optional High Alloys Available
- ANSI & DIN Flanged Ends
- Outlet Check Valve



Jordan Valve a division of Richards Industries  
3170 Wasson Road • Cincinnati, OH 45209  
513.533.5600 • 800.543.7311 • 513.871.0105 (f)  
info@richardsind.com • www.jordanvalve.com

## SPECIFICATIONS

### Sizes:

- 1/2" – 3/4" (DN15 – DN20)

### End Connections:

- FNPT
- ANSI & DIN Flanges

### Body Materials:

- 316L Stainless Steel
- Other Materials Available on Application

### Spring Housing:

- 316L Stainless Steel

### Diaphragm:

- Ultra Lightweight Teflon

### Seats and Balance Diaphragm:

- Buna-N, FKM, EPDM, Kalrez

### Service:

- Tank blanketing

### Flow Capacity:

- Cv (Kv): 0.15 (0,13), 0.2 (0,17), 0.4 (0,34)

### Shutoff:

- ANSI Class VI (ANSI/FCI 70-3-2016)

### Available Spring Ranges

- 0.5 – 5.5 wc (1,25 mb - 13,7 mb)
- 4 – 10 wc (9,96 mb - 24,9 mb)

### Max Operating Inlet Pressure:

- 200 psig @ 100°F (13,8 barg @ 38°C)

### Max Differential Pressure:

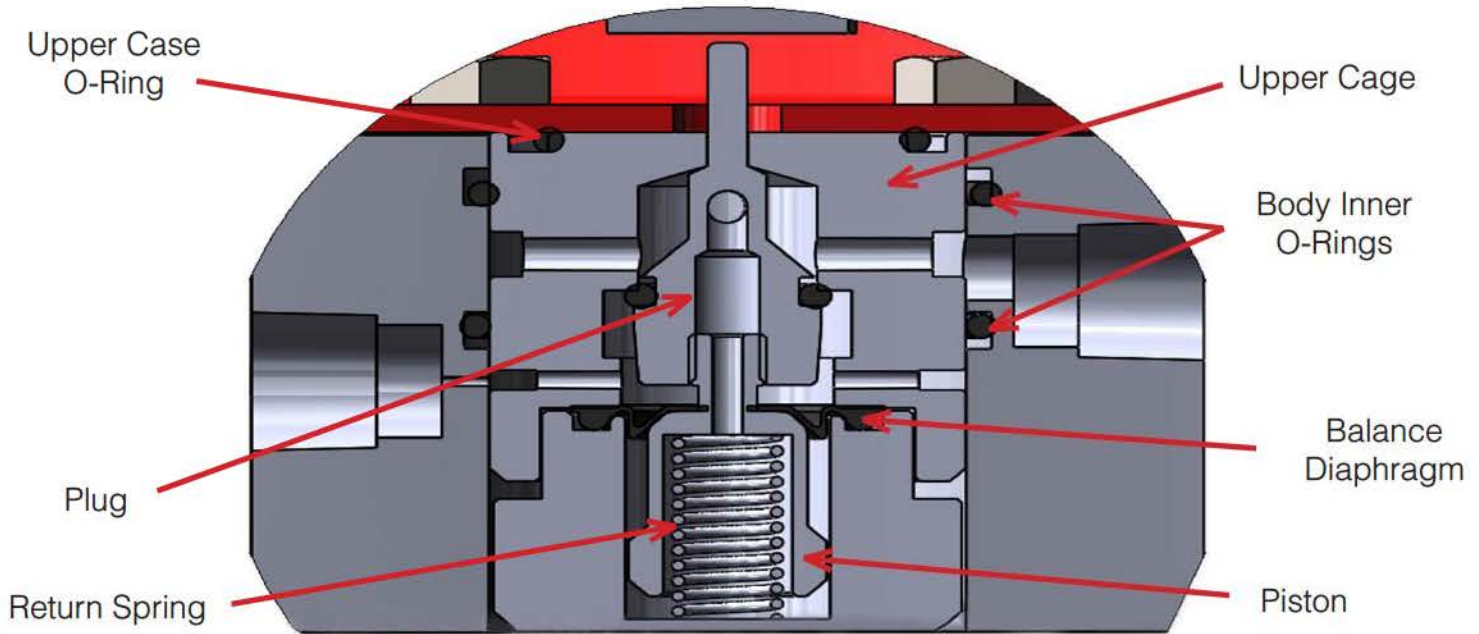
- 200 psig @ 100°F (13,8 barg @ 38°C)

### Max Downstream Pressure (Safety Rating):

- 20 psig (1,38 barg)

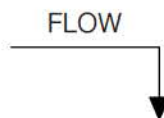
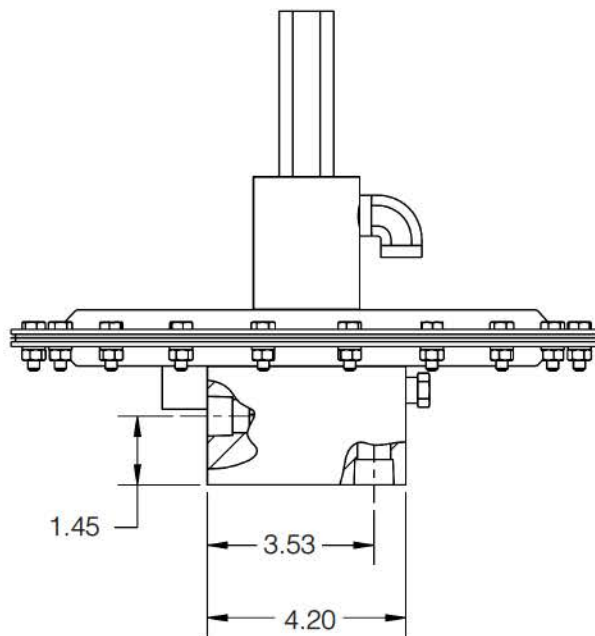
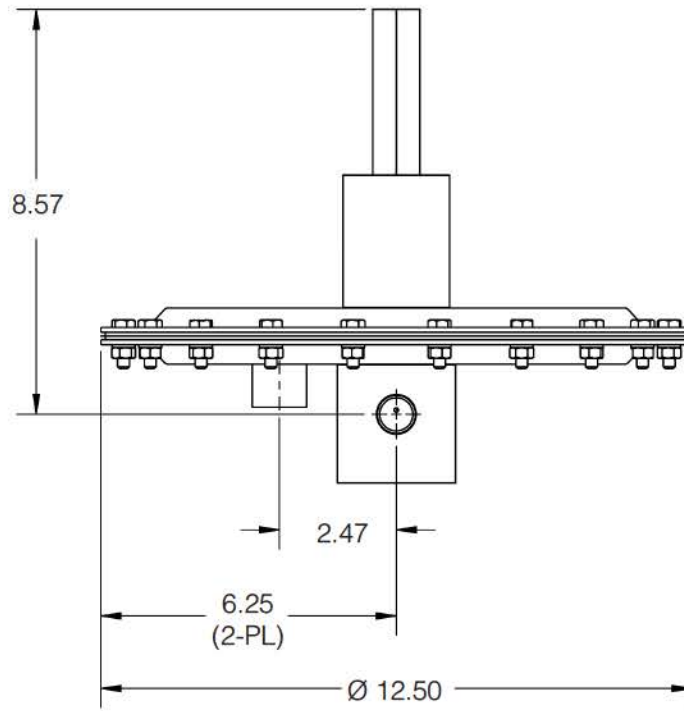
### Operating Temperatures:

- Determined by Elastomer



**Plug Assembly**

**DIMENSIONS**



**ORDERING SCHEMATIC FOR MK695X**

Model No	Size	Body Mat'l	1	2	3	4	5	6	7	8	9	10	11	12

Model	
695X	Low Pressure

Press Switch	
AA	Not Req'd
ZZ	Non-Standard

Size	
050	1/2"
075	3/4"

Range	
A7	0.5-5.5" W.C.
A8	4-10 W.C.
ZZ	Non-Standard

Body Material	
SB	Stainless Steel (SA479)
ZZ	Non-Standard

Actuator	
S1	Standard
ZZ	Non-Standard

1 & 2	End Connections & Cv		
P	NPT	A	0.15
		B	0.20
		C	0.40
ZZ	Non-Standard		

Seat & O-Ring	
BN	Buna-N
VI	Viton
EP	EPDM
ZZ	Non-Standard

CAUTION: The following information is subject to change. Product Numbers and Description should be checked with the Factory for accuracy before Order Entry.



Jordan Valve a division of Richards Industries  
 3170 Wasson Road • Cincinnati, OH 45209  
 513.533.5600 • 800.543.7311 • 513.871.0105 (f)  
 info@richardsind.com • www.jordanvalve.com