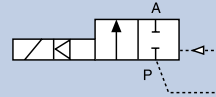


Servo-Assisted Solenoid Valve with Plunger Pilot

5281

NPT 1/2" - NPT 2", 2.9-232 PSI

- Waterhammer-free
- Compact design with high flow rates
- Rugged molded diaphragm



Supplied as shown

Servo-assisted brass plunger piloted solenoid valve with un-coupled rugged diaphragm. This valve is designed for neutral gases and liquids where a rugged and reliable solution is required.

Technical Data

Pressure range	2.9-232 PSI, Max.
Temperature media	+14 °F ... +176 °F
Ambient temperature	131 °F, Max.
Body material	Brass
Seal material	NBR
Coil material	Epoxy (Class H)
Power consumption	DC: 8 W, AC: 21 VA (inrush), 12 VA (hold)
Protection class	IP65
Electrical Connection	2509 cable plug Form A (included)
Accreditations	UL Listed, FM Class 1, Div 2, CSA, CE

Options

- Normally open (0281B)
- Cables plug with LED
- Cable plug with varistor
- UL Recognized version with cable plug - Class 1, Div 1 FM & CSA

Envelope Dimensions [inch] (see datasheet for details)

2509 cable plug Form A included (see page 30)

Size	A	B	C
1/2"	2.56	1.57	4.72
3/4"	3.94	2.36	5.02
1"	4.53	2.76	5.35
1 1/4"	4.96	3.35	5.77
1 1/2"	4.96	3.35	6.12
2"	6.46	4.53	6.98

Ordering Chart (normally closed)

Port connection [inch]	Orifice [mm]	Cv	Pressure range [PSI]	Item no. Voltage/Frequency [V/Hz]			
				24 V DC	24 V/60 Hz	120 V/60 Hz	240 V/60 Hz
Brass							
NPT 1/2	13	4.66	2.9 - 232	457 395	457 396	457 397	457 398
NPT 3/4	20	5.83	2.9 - 232	457 399	457 400	457 401	457 402
NPT 1	25	11.65	2.9 - 232	457 403	457 404	457 405	457 406
NPT 1 1/4	32	23.30	2.9 - 232	457 407	457 408	457 409	457 410
NPT 1 1/2	40	23.30	2.9 - 232	457 411	457 412	457 413	457 414
NPT 2	50	46.60	2.9 - 232	457 415	457 416	457 417	457 418