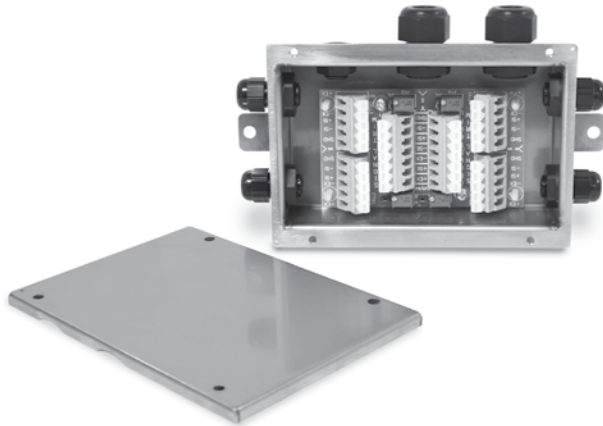


JB4SS

TuffSeal® Signal Trim Junction Box



Approvals



Specifications:

Cable Fittings:

PN 88956:

- (4) PG7 0.118-0.255 strain relief
- (2) PG11 0.197-0.394 strain relief
- (1) PreVent™ breather vent

PN 107700:

- (4) PG9 0.138-0.315 strain relief
- (2) PG11 0.197-0.394 strain relief
- (1) PreVent™ breather vent

Enclosure:

Stainless steel NEMA Type 4X

Connectors:

Spring clamp screwless, 12-28 AWG

Trimming:

Individual cell, signal trim

Potentiometers:

100,000 ohm, 25 turn cermet

Circuit Board:

3.8 in x 2.3 in (96.5 mm x 58.4 mm), with conformal coating

Warranty:

One-year limited warranty

Standard Features:

- Stainless steel, NEMA Type 4X enclosure
- Jumpers to enable/disable a load cell
- PreVent™ breather vent
- Conformal coated circuit board
- Number of cells: 2, 3 or 4 single cells
- Expansion port

Part Number/Price

Part#	Description	Price
88956	JB4SS signal trim junction box with PG7 cord grips for load cells	\$235.00
107700	JB4SS signal trim junction box with PG9 cord grips for load cells	\$250.00
88958	Board only	\$150.00
182990	Board only with standoffs	\$150.00
165271	Enclosure only (Includes cord grip and filter)	\$115.00

Note: Do not mix junction box models or use other brands of junction boxes with Rice Lake junction boxes. There is a risk of system instability.

Applications:

- Floor, tank, hopper scales

