

SURVIVOR Paramounts® HE

Medium-capacity Weigh Module Systems



Picture is a representation of actual product

Consisting of three different weigh module designs, the Paramounts system offers superior accuracy, even in applications with extreme expansion, contraction and vibration. The fixed-pin module acts as the vessel's primary reference point, enabling rotation. A single side-stop module is then paired with the fixed-pin module to permit mechanical expansion and contraction in one direction. The vessel then becomes a high-accuracy weighing system with the addition of one to six free-sliding modules. This system offers the free motion necessary to eliminate unwanted mechanical side loads, as well as the strength needed to keep the vessel in check. This gives the Paramounts system its industry-leading reputation for exceptional accuracy in unfriendly environments. Integral jacking/shipping bolts enhance safety by preventing accidental lift-off, facilitate quick field removal of load cells and eliminate load cell damage during transportation. Matched outputs and field-replaceable cable simplify installation and enhance serviceability. As a system, Paramounts represent the ultimate combination of convenience, accuracy and control.

Standard Features

- Capacities (per module): 520 lb-22,500 lb (2.3 kN/102.1 kg-100 kN/10,205.9 kg)
- All stainless steel construction
- Bolt-in-place design; module bolts directly to tank leg without requiring additional load buttons or mounting plates
- Hermetically sealed, stainless steel load cells
- Load cell outputs are matched to $\pm 0.07\%$, minimizing maintenance costs
- Unique design allows for thermal expansion/contraction
- Low-profile, self-checking design
- Jacking screw allows empty vessel to be lifted clear of load cell for maintenance
- Unique patented blind load hole technology minimizes unwanted side and eccentric loading
- Vessel is free to slide laterally on PTFE-coated surfaces
- Two-year limited warranty

Applications

- Medium-capacity, high-vibration mixers, blenders and tanks
- Batching/blending
- Pharmaceutical processing
- Food processing
- Petroleum refining and batching

Optional Features

- NTEP Certified load cells available: Capacities 1,125 lb-11,250 lb
- OIML certified load cells available: Capacities 1,125 lb-11,250 lb

Complete Kit Includes

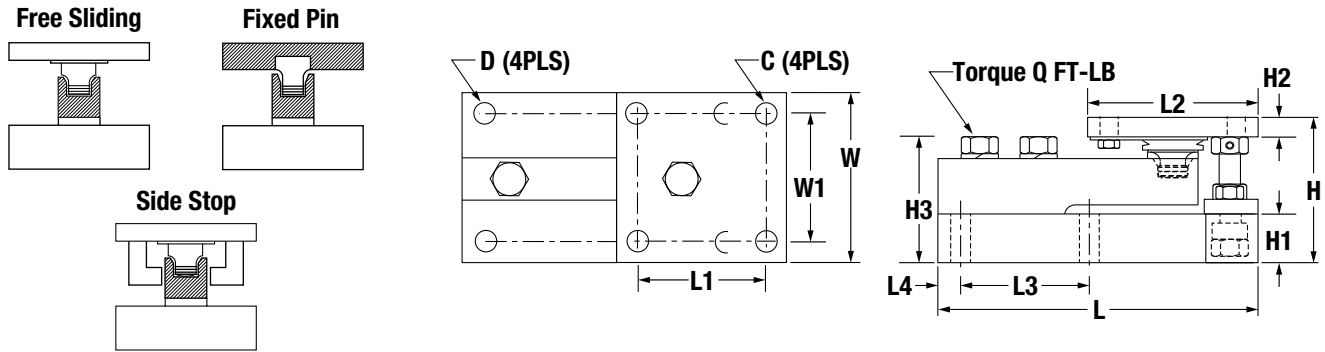
- One JB4SS NEMA Type 4X stainless steel signal trim junction box
- One fixed-pin module, one side-stop module, and one or two free-sliding assemblies Each module is complete with a FLINTEC SB4 or SB10 (520 lb) stainless steel hermetically sealed load cell
- 25 ft of our hostile environment EL147HE SURVIVOR® load cell cable

Load Cell Certifications



Except 520 lb

IP66/69K



Dimensions

Rated Capacity	C	D	H	H1	*H2	**H2	H3	L	L1	L2	L3	L4	W	W1	Q (FT- LB)
lb/in															
520 (2.3 kN)	0.375	0.437	3.49	1.00	0.50	0.75	2.98	7.51	3.00	4.00	3.00	0.50	4.00	3.00	65.0
1,125-5,200 (5-23 kN)	0.437	0.437	3.58	1.25	0.50	0.75	3.06	7.51	3.00	4.00	3.00	0.50	4.00	3.00	65.0
11,250 (50 kN)	0.562	0.562	4.66	1.50	0.62	1.00	4.09	9.19	3.87	5.00	3.87	0.56	5.00	3.87	295
22,500 (100 kN)	0.688	0.688	6.41	2.00	0.75	1.25	5.73	11.46	4.75	6.00	4.75	0.69	6.00	4.75	515.0
kg/mm															
236.1	9.5	11.1	88.6	25.4	12.7	19.1	75.7	190.8	76.2	101.6	76.2	12.7	101.6	76.2	-
510.8-2,360.0	11.1	11.1	90.9	31.8	12.7	19.1	77.7	190.8	76.2	101.6	76.2	12.7	101.6	76.2	-
5,107.5	14.3	14.3	118.4	38.1	15.7	25.4	103.9	233.4	98.3	127.0	98.3	14.2	127.0	98.3	-
10,215.0	17.5	17.5	162.8	50.8	19.1	31.8	145.5	291.1	120.7	152.4	120.7	17.5	152.4	120.7	-

kN = Kilonewtons

*Side stop and free sliding units **Fixed pin units

Order Information

Load Rating (Per Module)	Part #	Price
NTEP Certified/OIML C3 3-Module Kit		
1,125 lb	5 kN/510.8 kg	29883
2,250 lb	10 kN/1,021.5 kg	29884
5,200 lb	23 kN/2,360.8 kg	29885
11,250 lb	50 kN/5,107.5 kg	29886
NTEP Certified/OIML C3 4-Module Kit		
1,125 lb	5 kN/5,10.8 kg	29879
2,250 lb	10 kN/1,021.5 kg	29880
5,200 lb	23 kN/2,360.8 kg	29881
11,250 lb	50 kN/5,107.5 kg	29882
Non-NTEP Certified 3-Module Kit		
520 lb	2.3 kN/236.1 kg	38207
1,125 lb	5 kN/510.8 kg	17991
2,250 lb	10 kN/1,021.5 kg	17992
5,200 lb	23 kN/2,360.8 kg	17993
11,250 lb	50 kN/5,107.5 kg	17994
22,500 lb	100 kN/10,215.0 kg	17995
Non-NTEP Certified 4-Module Kit		
520 lb	2.3 kN/236.1 kg	38208
1,125 lb	5 kN/510.8 kg	17998
2,250 lb	10 kN/1,021.5 kg	17999
5,200 lb	23 kN/2,360.8 kg	18000
11,250 lb	50 kN/5,107.5 kg	18001
22,500 lb	100 kN/10,215.0 kg	18002
*Conduit adapter, 1/2-14 NPT	17703	\$40.00

*Must be factory installed