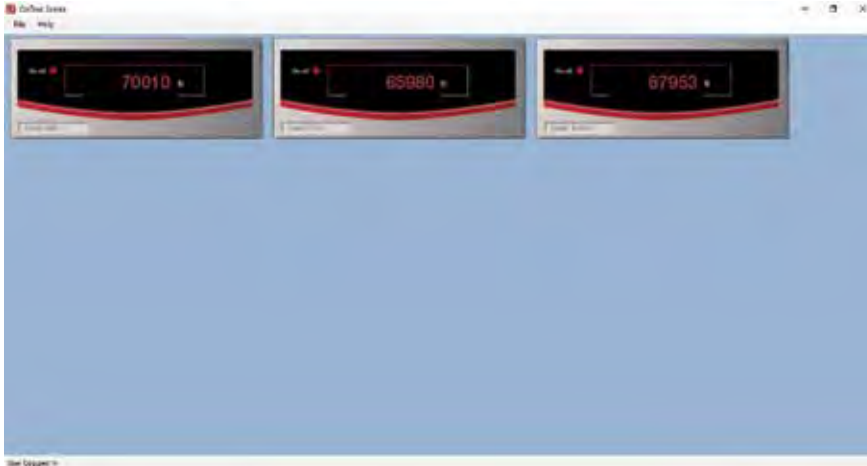


OnTrak® 3

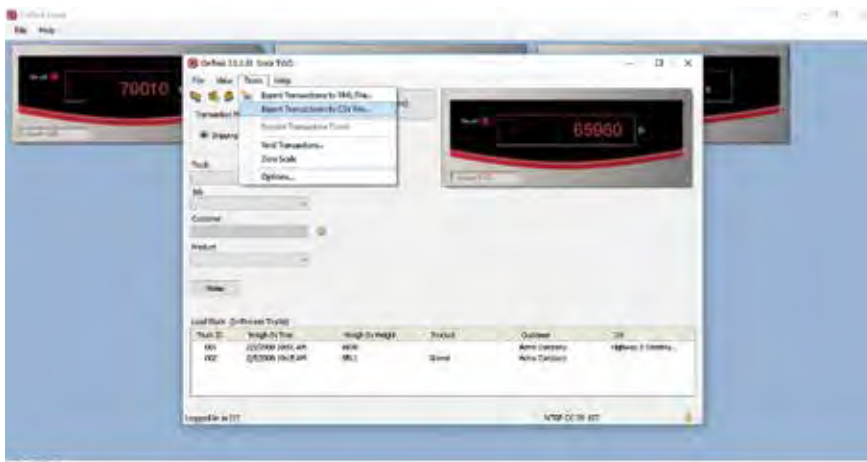
TRUCK SCALE DATA MANAGEMENT



Weigh Scale



Transaction Screen



Export Screen

Standard Features

- SQL Server® Express client/server database
- Comprehensive report filters
- User and administrator filters
- Backup and restore via included SQL Server Management Studio Express
- Unlimited charge/discount per product
- Ship or Receive mode for each transaction
- Exclusive database for: customer, hauler, truck, product, job, price/discount, tax, transaction
- Ethernet TCP/IP or RS-232 connectivity
- Supports VIRTUi/VIRTUi2® or Rice Lake weight indicators
- Supports one or more scales. Number of supported scales is determined by the capacity and process power for the PC
- Web kiosk interface dependent on customer-supplied Wi-Fi or LAN.
**Note: OnTrak PC and access device must share the same network*
- .CSV transaction file export

Optional Features

- Image capture with Ethernet TCP/IP camera (may require SQL server upgrade available through Microsoft)
- Interface to non-Rice Lake weight indicators
- Custom reports
- Database configuration
- Field installation and training
- Factory phone support

Specifications

System Requirements:

Supports Windows® 7 and up (x86 or x64) systems

Databases:

4 GB max database size when using included MS SQL Server Express, unlimited with standard version of MS SQL Server.

Backup and restore via included SQL Server Management Studio Express

Communications:

Support for multiple printers
Supports all Rice Lake indicator interfaces
Supports VIRTUi/VIRTUi2 interface
Optional drivers available for non-Rice Lake weight indicators

Transaction Ticket:

User defined ticket formatting

Reports:

Comprehensive report filters
Optional custom reports

Export Data:

File transfer via XML transaction. Export reports can be saved as PDF/XLS

Transaction Calculations:

Unlimited product prices and discounts
Tax calculations

Software Support:

Database configuration, field installation and training available
Phone support packages available, contact Rice Lake for further options

Part Numbers/Price

Part #	Description	Price
Consult	OnTrak 3 activation code	\$2,995.00

Options/Accessories

Part #	Description	Price
Consult	Non-Rice Lake indicator interface	\$195.00
Consult	Custom reports	95.00/hour
Consult	Database configuration	95.00/hour
FLD-INSTALL	Field installation	\$1,320.00/weekday plus expenses
104789	Phone support, one hour	\$95.00
104790	Phone support, 10 hours	\$895.00
104791	Phone support, 25 hours	\$2,000.00
104792	Phone support, 50 hours	\$3,500.00