

WEIGH MODULES

HBM RTM

Stainless Steel Tank Weigh Modules



Picture is a representation of actual product

The HBM RTM weigh module assembly features a stainless steel, NTEP Certified THC load cell and a fully stainless mount including all associated hardware. Utilizing a rocker pin-loading concept, this design provides accurate weighing in the most adverse conditions. Standard features include both overload and overlift protection, making it ideal for most outdoor low-capacity tank and vessel weighing applications. Each HBM RTM module is provided standard with one load cell, 15 feet of cable, one mount and all associated hardware.

Load Cell Specifications

Full Scale Output:

2.0 (\pm 0.2) mV/V

Bridge Resistance:

350 ohms

Material/Finish:

Stainless steel

Temperature:

Compensated range 15°F to 104°F (-97°C to 40°C)

Safe Overload:

150% full scale

Safe Sideload:

100% full scale

Rated Excitation:

15VDC

Combined Error:

0.03% full scale

Insulation Resistance:

5,000 megohms

Seal Type:

Hermetically sealed, IP68

Cable Length:

15 ft (4.6 m)

Cable Color Code:

Green+ Excitation
 Black- Excitation
 White+ Signal
 Red- Signal

Warranty:

One-year limited warranty

Standard Features

- Capacities: 500 lb-10,000 lb (226.8 kg-4536.0 kg)
- Stainless steel
- Overload and overlift protection
- Rocker pin loading
- Welded-seal
- Integral lateral stops
- 15 ft cable on load cell

Applications

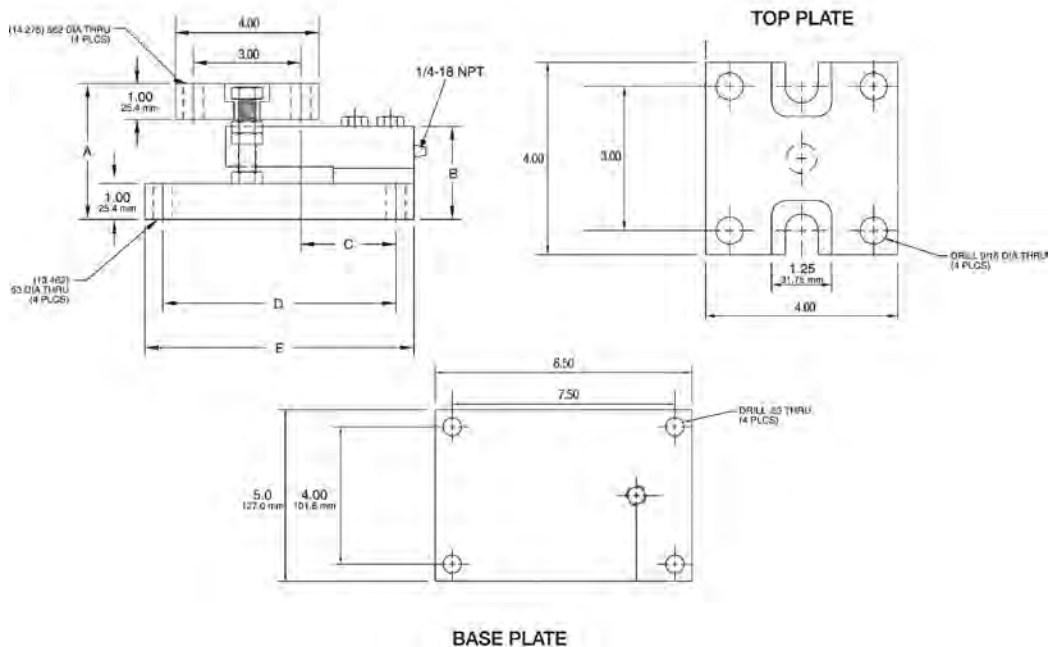
- Lower capacity tank and vessel weighing
- Process control and batching

Complete Kit Includes

- One JB4SS NEMA Type 4X stainless steel signal trim junction box
- Three or four HBM RTM stainless steel mounting assemblies
- 25 ft of our hostile environment EL147HE SURVIVOR® load cell cable

Load Cell Certifications





Dimensions

Rated Capacity	A	B	C	D	E
lb/in					
500-2,500	3.78	2.59	2.62	6.50	7.50
5,000	4.03	2.83	2.62	6.50	7.50
10,000	4.28	3.08	3.88	7.50	8.50
kg/mm					
226.8-1,134.0	96.0	65.7	66.5	165.1	190.5
2,268.0	102.3	71.8	66.5	165.1	190.5
4,536.0	108.7	78.2	98.5	190.5	215.9

Order Information

Load Rating (Per Module)	Part#	Price
500 lb	170480	Consult
1,250 lb	170481	Consult
2,500 lb	170482	Consult
5,000 lb	170483	Consult
10,000 lb	170484	Consult
3-Module Kit		
500 lb	171157	Consult
1,250 lb	171158	Consult
2,500 lb	171159	Consult
5,000 lb	171160	Consult
10,000 lb	171161	Consult
4-Module Kit		
500 lb	171162	Consult
1,250 lb	171163	Consult
2,500 lb	171164	Consult
5,000 lb	171165	Consult
10,000 lb	171166	Consult

Please contact factory for pricing and availability