

Elster 4, Elster 8 Industrial oil meters

Sizes 1/8" & 1/4"



	Elster 4	Elster 8
Size	1/8"	1/4"
Minimum flow GPH (l/h)	0.25 (1)	1 (4)
Max rec cont flow GPH (l/h)*	14 (50)	35 (135)
Peak flow GPH (l/h)	20 (80)	50 (200)
Accuracy	±1%	±1%
Max operating pressure psi (bar)	355 (25)	355 (25)
Max operating temp °F (°C)	140 (60)	140 (60)

Register reading	1/8"	1/4"
Smallest quantity USG (l)	0.001 (0.001)	0.01 (0.01)
Capacity in millions USG (l)	0.1 (0.1)	0.1 (0.1)

Physical description	1/8"	1/4"
Weight in lbs (kg)	1.5 (0.7)	1.8 (0.8)
Threaded connection type**	1/8" FNPT	1/4" FNPT
Safety Filter Mesh (included)	120	100
Recommended strainer mesh	200	140

Optional pulse units	1/8"	1/4"
Reed pulser - pulses/USG (pulses/l)	10 (10, 100, 800)	1216 (1, 322)

*Meter selection should be based on the maximum recommended continuous flow rating.

**Using the provided adapters.

Materials

Meter body	Brass
Cover	Oil proof polymer
Working chamber	Brass
Shutter	Brass
O-rings	Buna N (AMCO 4) Viton (AMCO 8)
Piston	Anodized aluminum
Safety filter	316 stainless steel

Operation

This Elster AMCO Water line of compact high precision oscillating piston oil meters covers a range of flows from 0.25 to 50 GPH. These meters are capable of handling light heating oil, diesel, and even gasoline. Accuracy is ± 1% throughout the operating flow range for each meter. Each meter is tested with #2 oil at 70°F to verify the accuracy.

Typical applications of these Elster AMCO Water oil meters include: Measuring heating oil consumption in burners for heating units and industrial furnaces; measuring fuel consumption in land-based and sea-based diesel and gasoline engines including emergency power generators; industrial batching applications.

The user has the option of mounting these meters horizontally, vertically, or on any plane in between. Elster AMCO Water oil meters include a register face that features a 1:1 piston ratio low-flow indicator to detect plumbing leaks and a high resolution sweep hand on the register.

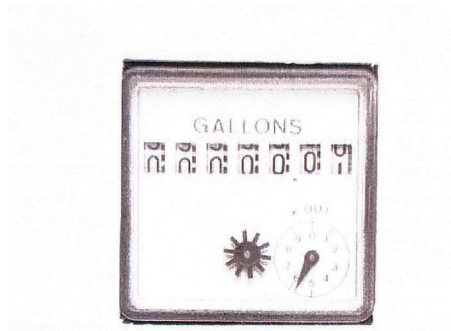
Pulse unit versions of the Elster 4 and Elster 8 are available to allow interfacing for batch operations, rate of flow indication, or remote readouts and control. Registration is retained even with the addition of a pulse output to either the Elster 4 or Elster 8. Compatible electronic equipment is available from Elster AMCO Water.



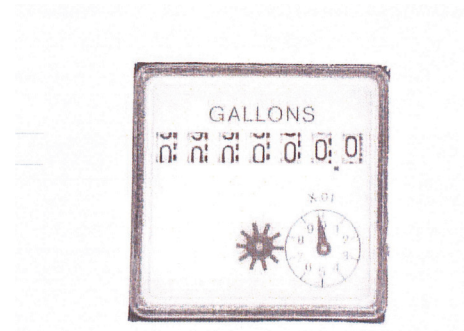
Read pulser

- 2-wire system
- Max voltage: 48 VAC/VDC
- Max current: 50 mA
- Max switch power: 3W
- Max resistor (47 Ohm) power: 0.5W
- On time: 50 ± 20%
- No cable supplied

Note: This pulser is not polarity (+/-) sensitive.



Elster 4

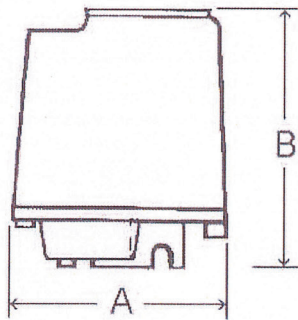


Elster 8

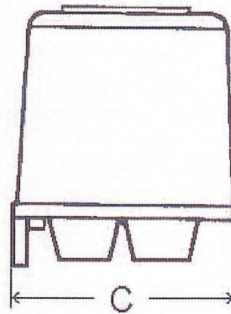
Dimensions in (mm)

Meter size	A	B	C	D	E
1/8"	2.50 (65)	3.125 (79)	2.50 (65)	0.725 (18)	0.875 (23)
1/4"	2.50 (65)	3.125 (79)	2.50 (65)	0.725 (18)	0.875 (23)

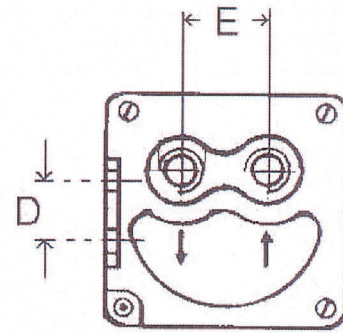
Note: All dimensions are ±1/16".



SIDE



FRONT



BOTTOM



elster

www.elsteramcowater.com

United States
Elster AMCO Water, LLC
10 SW 49th Avenue, Bldg. 100
Ocala, FL 34474
T +1 352 369 6500
F +1 352 368 1950
watermeters@elster.com

Canada
Elster Canadian Meter Company Inc.
1100 Walker's Line, Suite 101
Burlington, Ontario L7N 2G3
T +1 866 703 7581
F +1 905 634 6705
watermeters@elster.com

Caribbean
Elster AMCO Water, Inc.
P.O. Box 225, Carretera 112 KM 2.3
Isabella, PR 00662
T +1 787 872 2006
F +1 787 872 5427
prwatermeters@elster.com

© 2014 by Elster. All rights reserved.

The company's policy is one of continuous product improvement and the right is reserved to modify the specifications contained herein without notice. These products have been manufactured with current technology and in accordance with applicable AWWA Standards.

IND-OIL-48/01-14