

RL50210 TA

50lb-500lb Capacity Mini Tank Weighing Module



Available in configurations with three or four mounting assemblies.
Picture is a representation of actual product

The RL50210 TA weigh module kit provides a cost-effective alternative for your customers' low-range weighing needs. A variety of features makes this kit easy to install and an exceptional choice for various indoor weighing applications where checking requirements are low. Environmentally protected load cells, neoprene isolation/compression mounts and other Rice Lake Weighing Systems' components are the keys to this module's outstanding performance.

Module with RL50210 or RL50210SS cantilever beam load cell; capacities (per module): 50 lb (22.7 kg), 100 lb (45.4 kg), 150 lb (68.0 kg) and 250 lb (113.4 kg). 500 lb model features RL30000 single-ended beam load cell



RL50210 TA mild steel (50 lb-250 lb)



RL50210 TA-SS, stainless steel (50 lb-250 lb)

Discontinued, limited quantities available

* Not FM approved

Standard Features

- Zinc plated, mild steel modules
- Lower weighing ranges from 50 lb-500 lb (22.7 kg-226.8 kg) per module
- Environmentally protected load cells
- Neoprene isolation/compression mounts allow for minor misalignment, thermal expansion and shock absorption
- Overload stop for 500 lb (226.8 kg) modules provides durability

Applications

- Small tanks and hoppers
- Conveyor/In-motion weighing
- Small platform scales where minor shock loading may be a problem

Optional Features

- Stainless steel modules available in 50, 100, 150, 250 and 500 lb (22.7, 45.4, 68.0, 113.4 and 226.8 kg) capacities with RL50210SS, RL50210SS and RL39123 stainless steel load cells or VPG Sensortronics® 65023 SS load cells
- 65059 kits available with VPG Sensortronics 60040 load cells, capacities: 50 lb-250 lb (22.7 kg-113.4 kg) or 65023 load cells, capacity: 500 lb (226.8 kg)

Complete Kit Includes

- One JB4SS NEMA Type 4X stainless steel signal trim junction box
- Three or four RL50210 cantilever beam load cells (50 lb -250 lb models)
- Three or four RL30000 single-ended beam load cells (500 lb models)
- Three or four RL50210SS cantilever beam load cells (50 lb-250 lb)
- Three or four RL39123 stainless steel single-ended beam load cells (500 lb)
- Three or four neoprene isolation/compression mounts
- 25 ft of our hostile environment EL147HE SURVIVOR® load cell cable

Load Cell Certifications

Rice Lake model only, not stainless steel models

Dimensions

Rated Capacity	C	C1	H	H1	L	L1	L2	W	W1	W2	W3
lb/in											
50-250	0.34	—	3.13	0.50	4.00	3.25	2.38	3.88	3.00	2.25	—
500	0.44	0.56	3.88	0.50	6.00	4.00	3.38	5.50	4.00	3.00	4.13
kg/mm											
22.7-113.4	8.6	—	79.5	12.7	101.6	82.6	60.5	98.6	76.2	57.2	—
226.8	11.2	14.2	98.6	12.7	152.4	101.6	85.9	139.7	101.6	76.2	104.9

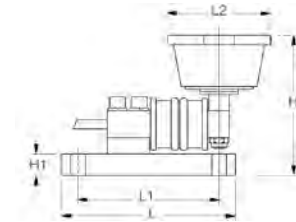
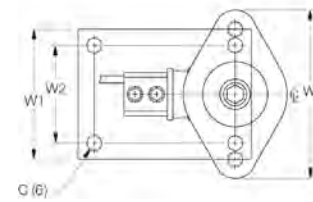
Order Information

Load Rating (Per Module)*	Part#	Price
Mild Steel Single Module (Includes Load Cell)		
50 lb	22.7 kg	17844
100 lb	45.4 kg	17845
150 lb	68.0 kg	17846
250 lb	113.4 kg	17847
500 lb	226.8 kg	17848
Mild Steel 3-Module Kit		
50 lb	22.7 kg	18051
100 lb	45.4 kg	18052
150 lb	68.0 kg	18053
250 lb	113.4 kg	18054
500 lb	226.8 kg	18055
Mild Steel 4-Module Kit		
50 lb	22.7 kg	18057
100 lb	45.4 kg	18058
150 lb	68.0 kg	18059
250 lb	113.4 kg	18060
500 lb	226.8 kg	18061
Stainless Steel Single Module (Includes Load Cell)		
50 lb**	22.7 kg	63033
100 lb**	45.4 kg	63034
150 lb**	68.0 kg	63035
250 lb**	113.4 kg	63036
500 lb	226.8 kg	17954
Stainless Steel 3-Module Kit		
500 lb	226.8 kg	30394
Stainless Steel 4-Module Kit		
500 lb	226.8 kg	30393

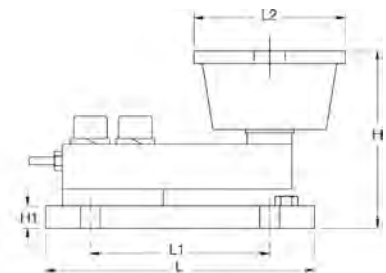
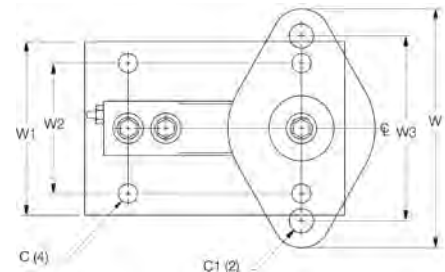
VPG Scentroidrics 65059 Order Information

Load Rating (Per Module)*	Part#	Price
Mild Steel Single Module (Includes Load Cell)		
50 lb	22.7 kg	17825
100 lb	45.4 kg	17826
150 lb	68.0 kg	17827
250 lb	113.4 kg	17828
500 lb	226.8 kg	17829
Mild Steel 3-Module Kit		
50 lb	22.7 kg	18063
100 lb	45.4 kg	18064
150 lb	68.0 kg	18065
250 lb	113.4 kg	18066
500 lb	226.8 kg	18067
Mild Steel 4-Module Kit		
50 lb	22.7 kg	18069
100 lb	45.4 kg	18070
150 lb	68.0 kg	18071
250 lb	113.4 kg	18072
500 lb	226.8 kg	18073
Stainless Steel Single Module (Includes Load Cell)		
500 lb	226.8 kg	17950
Stainless Steel 3-Module Kit		
500 lb	226.8 kg	30392
Stainless Steel 4-Module Kit		
500 lb	226.8 kg	30391

* Load rating is per module ** Limited quantities available



50-250 lb (22.7-113.4 kg)



500 lb (226.8 kg)