

Servo-Assisted Solenoid Valve with Isolated Pilot

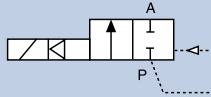
5282

NPT 1/2" - NPT 2", 2.9-145 PSI

- Unique isolated technology for slightly contaminated fluids
- Independently adjustable open / close rate
- Field configurable normally open / closed



Supplied as shown (stainless steel version)



Completely unique servo-assisted solenoid valve with isolated pivoted armature pilot. This valve design is much less sensitive to fluid contamination than plunger operated valves and therefore offers many advantages in the process environment. The pilot section can be rotated in the field to make the valve Normally Open.

Technical Data

Pressure range	2.9-145 PSI, Max.
Temperature media	+32 °F ... +194 °F
Ambient temperature	131 °F, Max.
Body material	Brass or Stainless steel
Seal material	NBR with brass, FKM with Stainless
Coil material	Epoxy
Power consumption	DC: 8 W, AC: 21 VA (inrush), 12 VA (hold)
Protection class	IP65
Electrical Connection	2509 cable plug Form A (included)
Accreditations	UL listed, CSA

Options

- Normally open
- Electrical position feedback
- Impulse coil
- Range of diaphragm seals to suit aggressive media
- Cables plug with LED
- Cable plug with varistor - Class 1, Div 2 FM & CSA

Envelope Dimensions [inch] (see datasheet for details)

2509 cable plug Form A included (see page 30)

Size	A	B	C
1/2"	2.56	1.57	4.84
3/4"	3.94	2.36	5.16
1"	4.53	2.76	5.55
1 1/4"	4.96	3.35	5.79
1 1/2"	4.96	3.35	6.14
2"	6.46	4.53	6.97
2 1/2"	7.09	4.53	7.28

Ordering Chart

Port connection [inch]	Orifice [mm]	Cv	Pressure range [PSI]	Item no. Voltage/Frequency [V/Hz]	
				24 V DC	120 V/50-60 Hz
Brass					
NPT 1/2	13	4.66	2.9 - 145	457 870	457 872
NPT 3/4	20	5.83	2.9 - 145	457 874	457 876
NPT 1	25	11.65	2.9 - 145	457 878	457 880
NPT 1 1/4	32	23.30	2.9 - 145	457 882	457 884
NPT 1 1/2	40	23.30	2.9 - 145	457 886	457 888
NPT 2	50	46.60	2.9 - 145	457 890	457 892
Stainless steel					
NPT 1/2	13	4.66	2.8 - 145	457 894	457 896
NPT 3/4	20	5.83	2.8 - 145	457 898	457 900
NPT 1	25	11.65	2.8 - 145	457 902	457 904
NPT 1 1/4	32	23.30	2.8 - 145	457 906	457 908
NPT 1 1/2	40	23.30	2.8 - 145	457 910	457 912
NPT 2	50	46.60	2.8 - 145	457 914	457 916