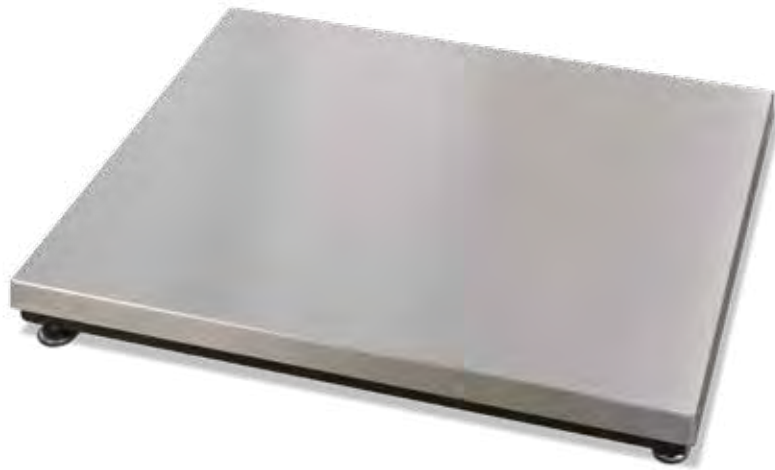



# BenchMark™ LP

## Low Profile Bench Scales



 *Ideal for Aviation Weighing. A complete system can be sold with the Tracer® AV. Reference Aviation section for specifications*

### Specifications

**Load Cell, Rated Output:**

1.0mV/V ±10%

**End Load Capacity:**

60% of full scale capacity

**Cable Length:**

20 ft (6.1 m) for connecting junction box to indicator

**Warranty:**

Two-year limited warranty

**Approvals:**

NTEP CC 08-017, Class III 5,000 d (except 1000 lb capacity)

Measurement Canada AM 5660, Class III 5,000 d (except 500 kg capacity)

### Standard Features

- Mild steel base construction
- 304 stainless steel cover
- ABS junction box
- Four planar beam load cells
- Adjustable leveling feet
- 20 ft of EL147 load cell cable
- Holes in lower frame for mounting scale without adjustable leveling feet

### APPROVALS



Measurement  
Canada  
Approved

### Part Number/Price

Part #	Capacity	Platform Dimensions (L x W x H) (HZ)	Est. Weight	Price
97662	100 lb (50 kg)	18 x 18 x 2.54 in (2.00 in*)	75 lb	\$1,065.00
97663	250 lb (125 kg)	18 x 18 x 3.06 in (2.18 in*)	85 lb	\$1,090.00
97664	500 lb (250 kg)	18 x 18 x 3.06 in (2.26 in*)	85 lb	\$1,115.00
97665	100 lb (50 kg)	24 x 24 x 2.54 in (2.00 in*)	85 lb	\$1,275.00
97666	250 lb (125 kg)	24 x 24 x 3.00 in (2.18 in*)	100 lb	\$1,300.00
97667	500 lb (250 kg)	24 x 24 x 3.06 in (2.26 in*)	100 lb	\$1,325.00
97668	500 lb (250 kg)	30 x 30 x 3.06 in (2.26 in*)	150 lb	\$1,525.00
97669**	1,000 lb (500 kg)	30 x 30 x 3.38 in (2.58 in*)	190 lb	\$1,575.00
97670	500 lb (250 kg)	36 x 36 x 3.06 in (2.26 in*)	175 lb	\$2,000.00
97671**	1,000 lb (500 kg)	36 x 36 x 3.38 in (2.58 in*)	175 lb	\$2,050.00

\*Height without adjustable leveling feet

\*\* Non-NTEP or Measurement Canada Approved

