

Pure 2

Our Pure2 series of generators takes the traditional 2-chem generation method to a new level. Utilizing 25% hydrochloric acid and 31% sodium chlorite, PureLine's Pure2 generators are able to realize conversion rates that far exceed competing lines that are only capable of converting lower concentration pre-cursors. This is one of our most affordable generators available in an open frame configuration or a fully enclosed cabinet.

With few moving parts, the Pure2 features low maintenance cost and reliable operation. The system has multiple safety interlocks and controls that allow the user to accurately maintain chem. feed ratios for optimal efficiency. The system is available with a batch tank and smart pumps that accept external control signals for flow pacing or residual control. With a relatively small footprint, the Pure2 is ideal for affordable and safe ClO₂ generation from <1 lb/day to > 1,500 lbs/day.



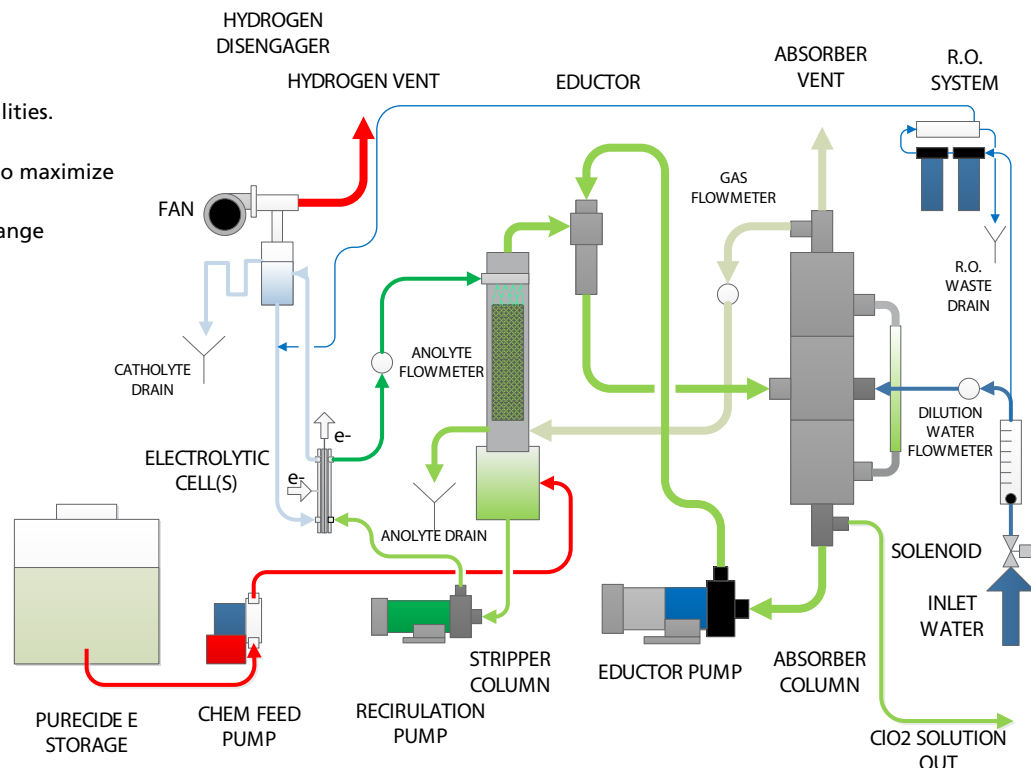
Reaction Chemistry



Pure Advantages

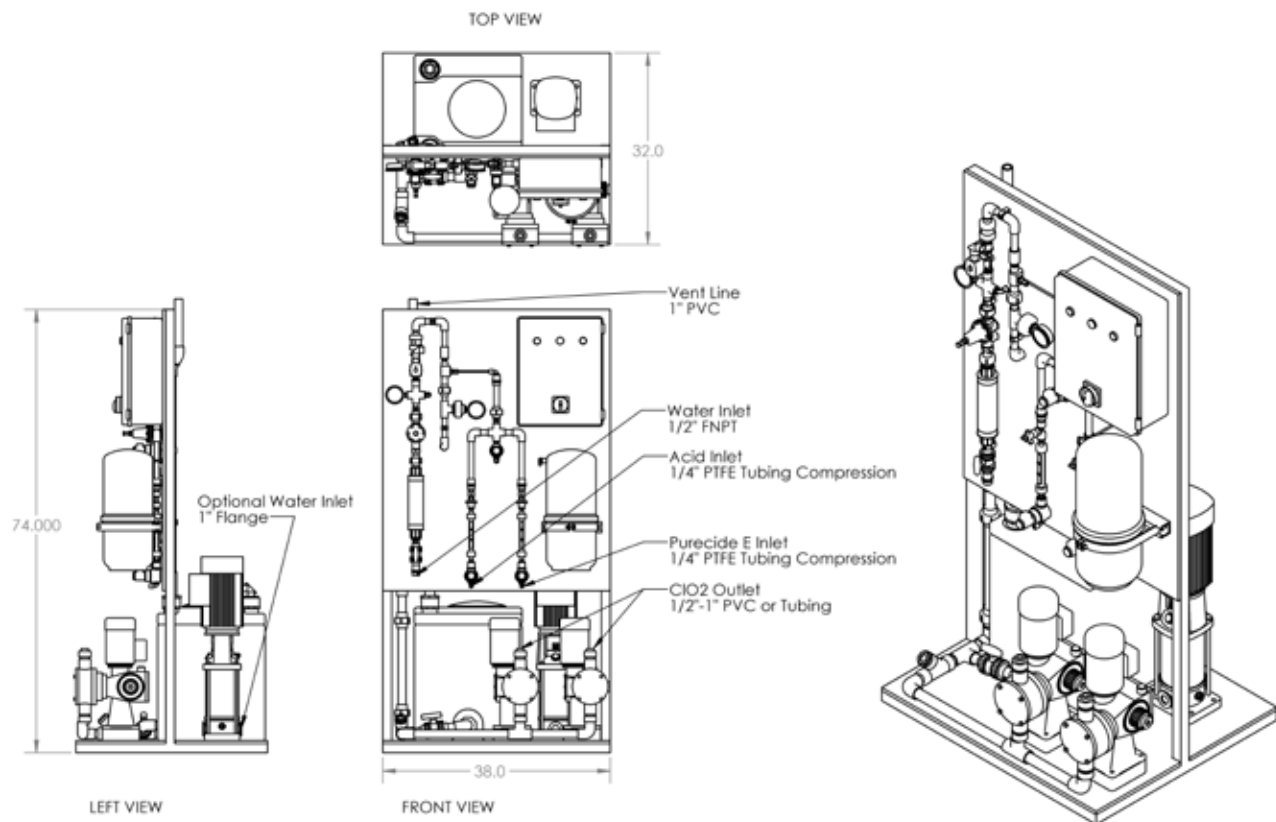
- Affordable, efficient system.
- Low maintenance cost.
- Monitoring and control capabilities.
- Multiple safety interlocks.
- Enhanced chem. feed control to maximize efficiency and safety.
- Broad adjustable production range (<1 lb to > 1,500 lbs per day)

Process Flow Diagram



Pure 2

HP-Series Common Platform 3lb to 40lb/day Electrochemical Generator



Generator Specifications

- Capacity: 0-20 lbs/day (Low Output) 20 - 4000 lbs /day (High Output)
- Chemical Usage: Purecide E (31% NaClO₂) ~6.2lb/lb ClO₂ 25% HCl ~8.1lb/lb ClO₂
- Electrical Power: 220VAC 1ph 20A service (30A for 1000lb/day or greater)
- Inlet Water: 80 mesh filtered water 5gpm at 100psig (regulated).
 - Booster Pump Recommend (Available on Skid)
- Co-Products:
 - Salt (NaCl), Excess Acid (HCl), Chlorate (NaClO₃)
- Controls:: AB programmable relay with:
 - remote I/O for Start/Stop and monitoring
 - Timers
- Cabinet: Fiber glass/PVC Skid Standard
White Polypropylene enclosure optional
- Dimensions: See drawing coming soon
- Weight: 300lbs – 500lbs

For more information
or to purchase:

PureLine

www.pureline.com

info@pureline.com

647 South Vermont Street
Palatine, IL 60067
847-963-8465