

EZ9200 Series Self-cleaning Microfiltration Systems

Applications

- Wastewater
- Surface Water



*Product image may differ from actual product.
Please refer to technical drawings.*

Self-cleaning microfiltration system - compatible with EZ1000 and EZ2000 colorimetric analyzers

About the EZ9000 Series

The successful implementation of online analyzers in process control strategies could not have been achieved without the development of a new generation of automatic sampling and sample preconditioning systems. The EZ9000 Series are the result of many years of field experience in combining analyzers with filtration units.

Simplified operation by self-cleaning action

All preconditioning systems are designed for fully automatic operation and require virtually no human intervention. Basically all systems are incorporated either with a blow-back action by instrument air, or a specific cleaning cycle. This fundamental design principle does not merely allow trouble-free sampling, moreover it contributes to high up-times.

The EZ9200 and EZ9250 are filtration systems designed especially for colorimetry applications where absorbance interference may present an issue. The unit uses a hydrophilic PES membrane that wets out quickly and with a large effective membrane surface for superior flow rates. The membrane preferably sits in a buffer container mounted on the filtration panel. Prime features include:

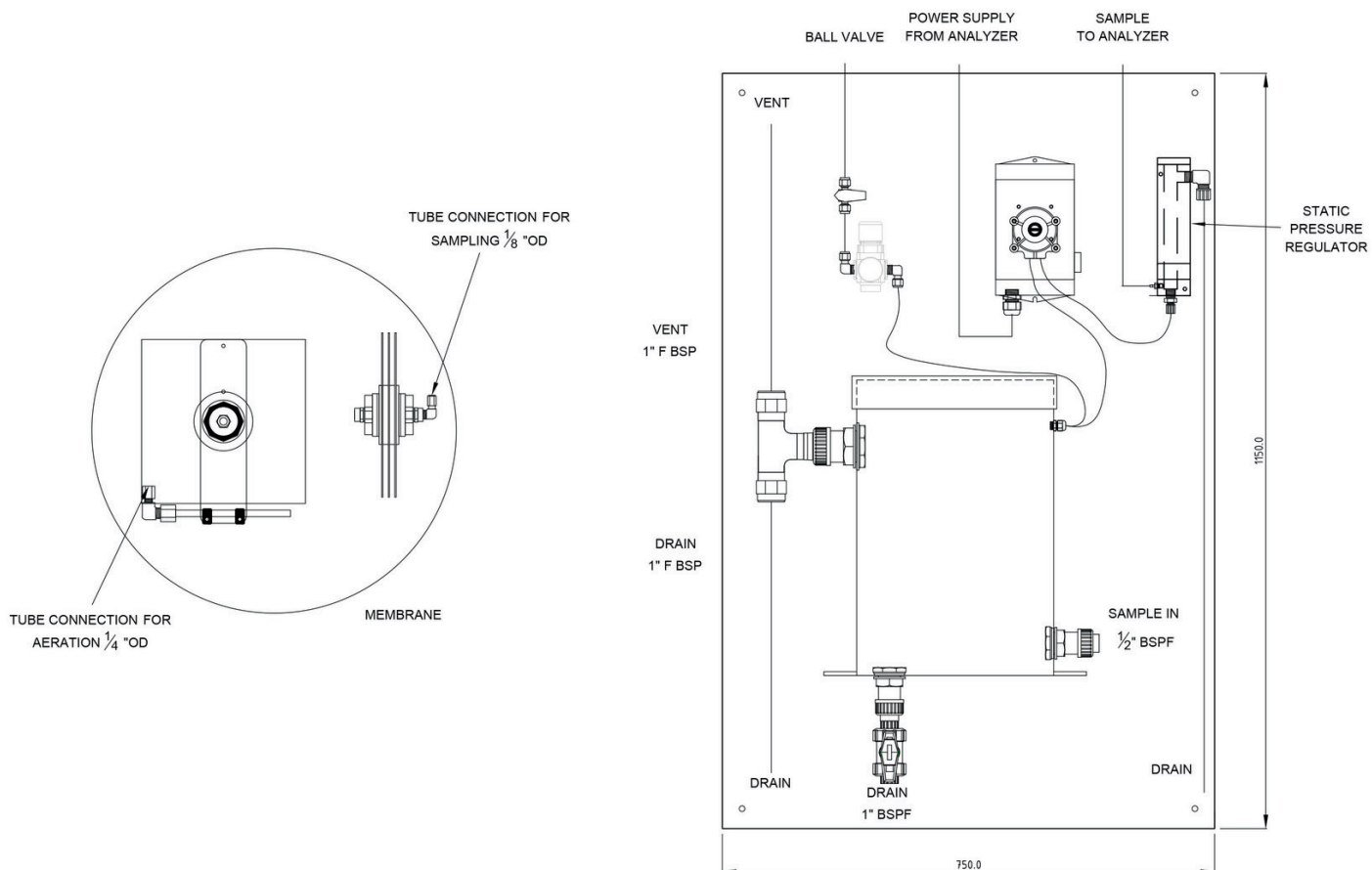
- Membrane filter with pore size $<1 \mu\text{m}$ designed for immersion in a buffer container, also directly (in situ)
- Automatic cleaning by instrument air
- Static Pressure Regulator assures a constant, readily available sample level
- PLC or analyzer controlled cleaning frequency

Technical Data*

Cleaning	Automatic cleaning by means of continuous instrument air
Pore Size	0.04 µm
Sample Temperature	Max. 65 °C (149 °F)
Instrument Air	Dry and oil free according to ISA-S7.0.01-1996 quality standard for instrument air
Drain	Sample return line 1" BSF; overflow Static Pressure Regulator 3/8" OD
Power	24 VDC, powered by analyzer or external supply
Earth Connection	Dry and clean earth pole with low impedance (< 1 Ohm) using an earth cable of > 2.5 mm ²
Protection Class	IP55
Material	Filter: SS PES (polyethersulphone) Piping: PVC Tubing: Norprene, PFA, PE Static Pressure Regulator: PMMA Panel: weather resistant Trespa
Dimensions (H x W x D)	1150 mm x 750 mm x 200 mm
Weight	18 kg (39.7 lbs.)

**Subject to change without notice.*

Dimensions - Drawings



Be confident with Hach Service

Start-Up/Commissioning: Our service technicians visit your site and setup instrumentation, provide basic end-user training on operations and maintenance, and validate settings and performance to get you started.

Service Agreement: Hach provides on-site and in-factory repair, preventive maintenance, and calibration programs for your instruments to ensure reliability and instrument up-time. We have services to fit your specific needs.

Order Information - Part Number Configurator

Microfiltration system, standard version, for immersion	EZ9200.99	0	7	X	X	X	X
Microfiltration system, with buffer tank, for bypass	EZ9250.99						
Cleaning							
N/A		0					
Pore size							
0.04 µm			7				
Power supply							
Powered through analyzer					0		
Stand-alone unit - 24 VDC needed					1		
Length of tubing-heating							
Standard (EZ9250 only)						0	
Up to 3 m (EZ9200 only)						A	
Up to 3 m with heating (EZ9200 only)						B	
Up to 6 m (EZ9200 only)						C	
Up to 6 m with heating (EZ9200 only)						D	
Up to 10 m (EZ9200 only)						E	
Up to 10 m with heating (EZ9200 only)						F	
Up to 15 m (EZ9200 only)						G	
Up to 15 m with heating (EZ9200 only)						H	
Up to 20 m (EZ9200 only)						I	
Up to 20 m with heating (EZ9200 only)						J	
Customized (EZ9200 only)						Z	
Other options							
Manual (continuous) sample pump, incl. overflow vessel without drain valve							0
Sample pump controlled by analyzer, incl. overflow vessel without drain valve ¹⁾							1
Manual (continuous) sample pump, incl. overflow vessel with drain valve							2
Sample pump controlled by analyzer, incl. overflow vessel with drain valve ¹⁾							3
Number of sample streams							
1 stream							1
Customized							Z

¹⁾ Not in combination with stand-alone unit power supply

DOC053.53.35213.Feb19

Hach World Headquarters: Loveland, Colorado USA

United States: 800-227-4224 tel 970-669-2932 fax orders@hach.com

Outside United States: 970-669-3050 tel 970-461-3939 fax int@hach.com

hach.com

Printed in U.S.A.

©Hach Company, 2019. All rights reserved.

In the interest of improving and updating its equipment, Hach Company reserves the right to alter specifications to equipment at any time.



Be Right™