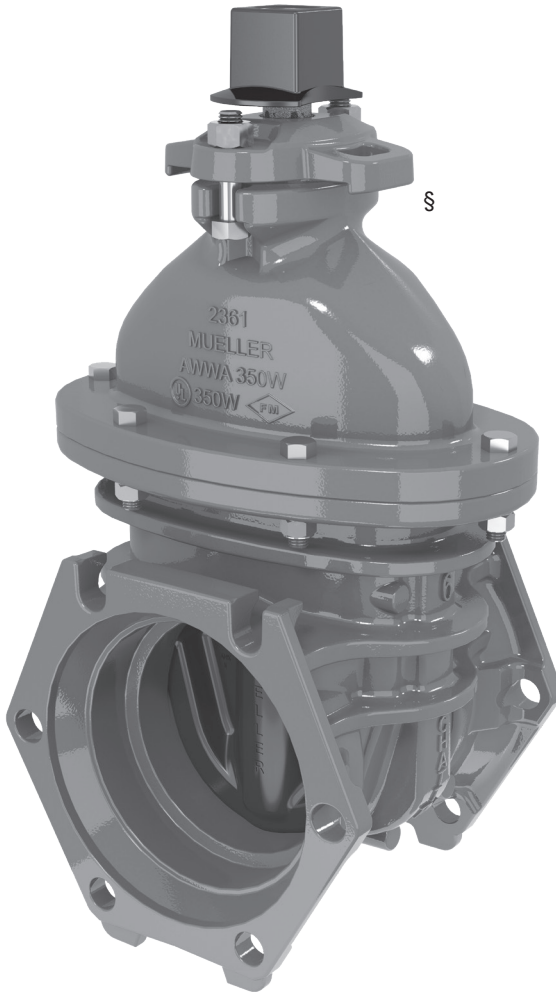


Mueller 2300 Series Resilient Wedge Gate Valves

Mueller Resilient Wedge Gate Valves have features to make them easier to operate and to preserve the sealing capability and interior coating integrity for many years of reliable service. In addition to popular end connection options, Mueller brand RW valves can be ordered with Mueller's exclusive AquaGrip® System that incorporates an O-ring sealed compression connection and integral pipe restraint in one "ready to use" easy and quick to install package.

Mueller 2"-12" 2300 Series Resilient Wedge Gate Valve Features



6" shown

- **350 PSIG (2400 kPa/24 barg) Maximum Working Pressure** – Hydrostatically tested at 700 psig (4800 kPa/48 barg).
- **Dual-Purpose Lifting Lugs** – new dual-purpose lifting lugs provide stability for the valve box. Accommodates strap or hooks; provides valve box alignment, eliminating need for valve box adapter.+
- **American Made Quality** – factory in Chattanooga, TN with ISO 9001 certification. Certified to ANSI/NSF 61 & 372. Manufactured and tested in compliance with ANSI/AWWA Standard C515. UL 262 Listed and FM 1120/1130 Approved.
- **Ductile Iron Construction** - Valve body, bonnet, disc, stuffing box, & op nut.
- **T-Head Bolt Retention** – improved T-head bolt retention feature eliminates need for anti-rotation bolts.
- **Triple O-ring Seals** – two above thrust collar and one below, retain lubricant in this critical area. Top two are replaceable with valve fully open and under pressure. Fourth O-ring serves as dirt seal.
- **Two-Anti-Friction Washers With Lubrication** – made of polymer, one above and one below the thrust collar, reduce operating torque to open or close valve.
- **STEM** – forged manganese bronze bar stock is upset, then machined to form a thrust collar for superior strength in this critical area.
- **Guide Cap Bearings** – made of polymer and snapped over rubber covered wedge guides, provide bearing surfaces that protect both wedge and interior body coating from wear and aid in easy operation – even the largest valves installed horizontally. Rollers, tracks and scrapers are not needed.
- **Smooth, Oversized Water Way** – full, round, unobstructed flow way accommodates full size cutters, provides superior flow characteristics and reduces pumping costs.**
- **Mueller Pro-Guard® Fusion Bonded Epoxy Coating** – 10 mils* thick protects all inside and outside iron surfaces, and complies with AWWA C550.
- **316 Stainless Steel Fasteners**
- **Integral Legs** – stands upright for easier handling and storage.
- **10-Year Limited Warranty** – assured reliability (see separate Mueller Warranty document for terms).
- **Designed For Potable Water Applications**

*Nominal

**16" valve requires 1/2" undersized cutter, 54" valve requires 48" cutter

Mueller 14" – 54" 2361 Series Resilient Wedge Gate Valve Features

In addition to all the features of the smaller 2361 series valves, large size Mueller 2361 series RW valves offer these features:



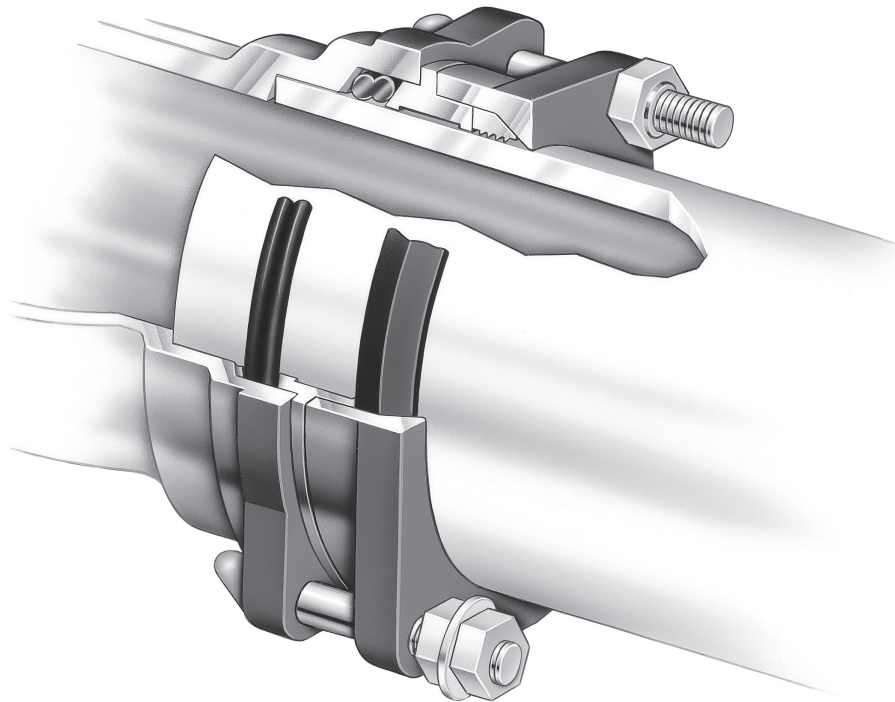
- **Stem** – 18"-54" manganese bronze casting with integral thrust collar.

SIZE	AWWA C515 WORKING PRESSURE	UL WORKING PRESSURE	FM WORKING PRESSURE
14"-16"	250	250	250
18"-24"	250	175 x	250
30"-54"	250	-	-

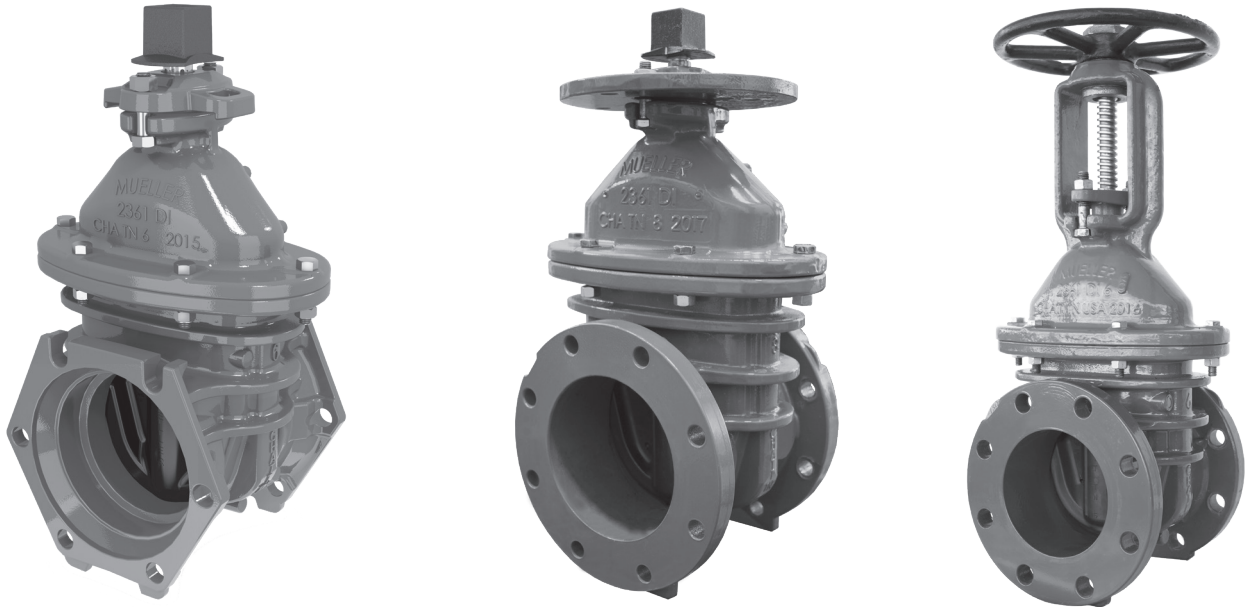
x UL Listed without gearing
- Certified to NSF 61 & 372

**RESILIENT WEDGE
GATE VALVES WITH
AQUAGRIP® SYSTEM****Mueller 2361 Series Resilient Wedge Gate Valves with AquaGrip System**

The Mueller AquaGrip System is offered in 4" through 12" sizes of the Mueller 2361 Series Resilient Wedge Gate Valves. This Mueller exclusive system combines both the compression connection and the pipe restraint system in one convenient, quick installation package. This eliminates the need for anchor couplings, tie rods or separate gland-type restrains. A typical AquaGrip connection uses fewer bolts than a conventional mechanical joint end, and substantially fewer than a gland-type restraint, significantly reducing installation time. This "labor saving" system is also available on Mueller Centurion® Fire Hydrants.



- ❑ **Accepts Varied Types Of Pipe** - DIPS style fits DI, C900 PVC and DIPS PE pipe. IPS style fits PVC, IPS PE and steel pipe. No disassembly or adapters and no special pipe end preparation. A liner for PE pipe (DR9-DR17) is recommended.
- ❑ **Fully Assembled Stab Connection** - arrives ready to insert the pipe, tighten the bolts and it's done. No need to change-out, add or remove parts. Nothing additional to inventory or handle in the field. No extra bolts to assemble or tighten. Substantially reduces labor and inventory costs.
- ❑ **Visually Shows When Properly Tightened** - breakaway nuts snap off using a standard wrench. No special torque requirements. Inner nut remains in place to allow future access to connection, if required. Reduces crew training and saves installation time. (In illustration, lower nut shown before tightening; upper one after.)
- ❑ **Pressure Responsive O-ring Seal** - unique double O-ring uses hydrostatic pressure from inside the pipe to enhance the seal as line pressure increases.
- ❑ **Full Circumferential Restraint** - gripper ring encircles pipe for uniform grip without creating points of high stress in pipe wall that could contribute to pipe failure.
- ❑ **Installs In Wet Conditions** - no special field conditions required, even installs under water.
- ❑ **Ductile Iron Construction** - valve body, bonnet and the Aqua-Grip System components.
- ❑ **Plus All Of The Other Features Of The 2300 Series**



Mueller UL/FM 2361, and 2362 series Resilient Wedge Gate Valves are available in Non-Rising Stem (N.R.S.) with indicator Post Flange (PIV), and Non-Rising Stem with AWWA Style Stuffing Box styles. The 2361 series is also available as Outside Screw and Yoke (O.S.&Y.) with Handwheel.

P.I.V. - Resilient Wedge Gate Valves with Indicator Post Flange have Triple O-ring Seals, Non-Rising Stems with a 2" square Wrench Nut and are available with several different end combinations. These are used as line valves posts and as auxiliary valves with fire hydrants. An Indicator Post is attached to the valve to indicate if buried valve is open or closed. **The Indicator Post Flange and O-ring Stuffing Box combination is a separate part from the bonnet, and is easily removed or replaced if the need should occur.**

Resilient Wedge Gate Valves without Indicator Post Flanges are Triple O-ring sealed and are identical to the one described above except for the stuffing box. These valves are used with fire hydrants in areas where Post Indicators are not required, with Wall Type Indicator Posts, and in other areas where UL/FM Valves are required but Indicator Post Flanges are not necessary.

The Outside Screw and Yoke (O.S.&Y) Resilient Wedge Gate Valve has adjustable packing seal and a handwheel, and is normally used for installations of fire protection systems, sprinkler risers, vaults, etc.

All Mueller UL/FM Resilient Wedge Gate Valves are available to open left or right. Non-Rising Stem (NRS) valves have the 2" square Wrench Nut as standard. A hand wheel is an available option on NRS valves; however this configuration has not been evaluated by UL.

SECTION
B-1

Rev. 7-17

Shaded area indicates change

**N.R.S. RESILIENT WEDGE
GATE VALVE WITH
AQUAGRIP x FL. ENDS**



UL / FM

FIRE PROTECTION PRODUCTS

P-2361-76 AQUAGRIP ENDS FOR DIPS X FLANGED
Indicator Post Style Stuffing Box
2" Square Wrench Nut

- 4", 6", 8", 10", 12" size DIPS
- 4", 6", 8" size IPS
- UL 262 Listed and FM 1120/1130 Approved and certified to ANSI/NSF 61 & 372
- Iron body with Mueller® PRO-GARD® Fusion Bonded Epoxy Coated interior and exterior surfaces
- Non-rising bronze stem
- Rubber encapsulated iron wedge

P-2361-86 AQUAGRIP ENDS FOR IPS X FLANGED
Indicator Post Style Stuffing Box
2" Square Wrench Nut

- 200psig (1375 kPa/14 barg) maximum working pressure, 500 psig (3450 kPa/35 barg) static test
- Triple O-ring seal (2 above the thrust collar and 1 below)
- Epoxy coating meets or exceeds all applicable requirements ANSI/AWWA C550
- Flanged end drilling complies with ASME/ANSI B16.1 Class 125
- Meets or exceeds all applicable requirements of ANSI/AWWA C515

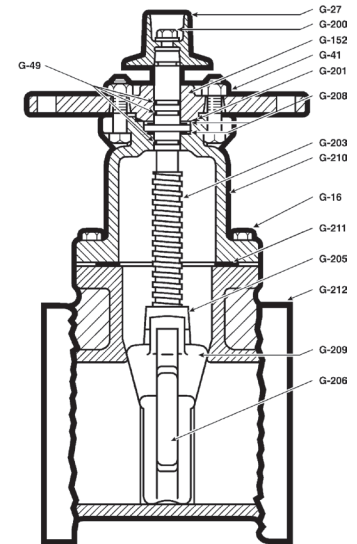


Options

- Stainless steel stem: Type 304 and Type 316
- Low zinc, silicon bronze ASTM B98-C66100/H02 stem
- EPDM disc and o-rings

Parts List

Catalog Part Number	Description	Material	Material Standard
G-16	Bonnet Bolts & Nuts	316 Stainless Steel	ASTM F593 (bolt)/ASTM F594 (nut)
G-27	Wrench Nut	Ductile Iron	ASTM A536 ▼
G-41	Stuffing Box Bolts and Nuts	316 Stainless Steel	ASTM F593 (bolt)/ASTM F594 (nut)
G-49	Stem O-rings (3)	Nitrile	ASTM D2000
G-152	Stuffing Box	Ductile Iron	ASTM A536 ▼
G-200	Wrench Nut Cap Screw	316 Stainless Steel	ASTM F593
G-201	Stuffing Box Seal	Nitrile	ASTM D2000
G-203	Stem	Bronze	ASTM B138
G-205	Stem Nut	Bronze	ASTM B584
G-206	Guide Cap Bearings	Acetal	-
G-208	Anti-friction Washers (2)	Acetal	-
G-209	Wedge/Rubber Encapsulated	Ductile Iron**	ASTM A536 ▼
G-210	Bonnet	Ductile Iron	ASTM A536 ▼
G-211	Bonnet Gasket	Nitrile	ASTM D2000
G-212	Body	Ductile Iron	ASTM A536 ▼
G-213	Double O-ring***	EPDM	ASTM D2000
G-214	Intermediate Ring***	Ductile Iron	ASTM A536 ▼
G-215	Gripper Ring***	Ductile Iron	ASTM A536 ▼
G-216	End Ring***	Ductile Iron	ASTM A536 ▼
G-217	Breakaway Nut with Washer***	Steel	ASTM A108/Zinc Plated
G-218	T-head Bolt (not shown)	Steel	ASTM A242/Low Alloy (Corten)



Dimensions

Dimension*	Size				
	4"	6"	8"	10"	12"
A	14.19	18.00	21.50	25.50	28.62
FF	10.93	12.9	14.28	15.58	16.51
E	12.00	12.00	12.00	12.00	12.00
F	3.70	3.70	3.70	3.89	3.89
G (number and size of holes for AquaGrip)	4--.88"	4--.88"	6--.88"	8--.88"	8--.88"
R	9.00	11.00	13.50	16.00	19.00
Q (bore)	4.30	6.30	8.30	10.30	12.30
KK	2.75	3.75	3.75	3.75	3.75
UU (bolt circle diameter for FL)	7.50	9.50	11.75	14.25	17.00
B (number and size holes for FL)	8--.75"	8--.88"	8--.88"	12--1.00"	12--1.00"
Turns to open	14	20.5	26.5	33.0	38.5
Weight (lbs.)*	117	159	235	375	460

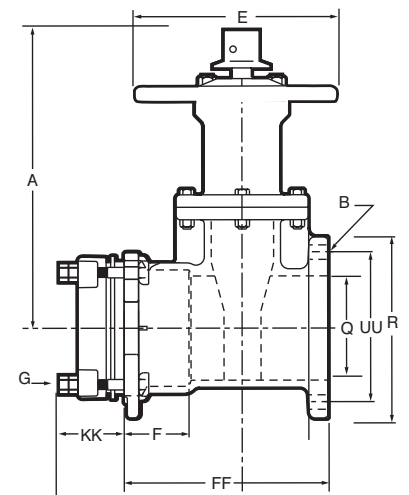
See page B-1-18 for ordering instructions.

*All dimensions are in inches. All weights are in approximate pounds.

**Fully encapsulated in molded rubber with no iron exposed.

***Parts for AquaGrip connection not shown - one required for each AquaGrip connection.

▼ Material strength ASTM A536 65-45 minimum



P-2361-77 AQUAGRIP ENDS X AQUAGRIP ENDS FOR DIPS
Indicator Post Style Stuffing Box
2" Square Wrench Nut

- 4", 6", 8", 10", 12" size for DIPS
- 4", 6", 8" size for IPS
- UL 262 Listed and FM 1120/1130 Approved and certified to ANSI/NSF 61 & 372
- Iron body with Mueller® PRO-GARD® Fusion Bonded Epoxy Coated interior and exterior surfaces
- Non-rising bronze stem
- Rubber encapsulated iron wedge

P-2361-87 AQUAGRIP ENDS X AQUAGRIP ENDS FOR IPS
Indicator Post Style Stuffing Box
2" Square Wrench Nut

- 200psig (1375 kPa/14 barg) maximum working pressure, 500 psig (3450 kPa/35 barg) static test
- Triple O-ring seal (2 above the thrust collar and 1 below)
- Epoxy coating meets or exceeds all applicable requirements ANSI/AWWA C550
- Meets or exceeds all applicable requirements of ANSI/AWWA C515

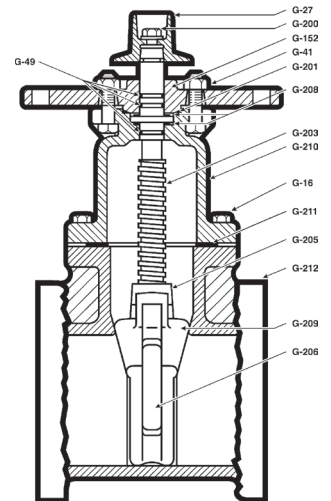


Options

- Stainless steel stem: Type 304 and Type 316
- Low zinc, silicon bronze ASTM B98-C66100/H02 stem
- EPDM disc and o-rings

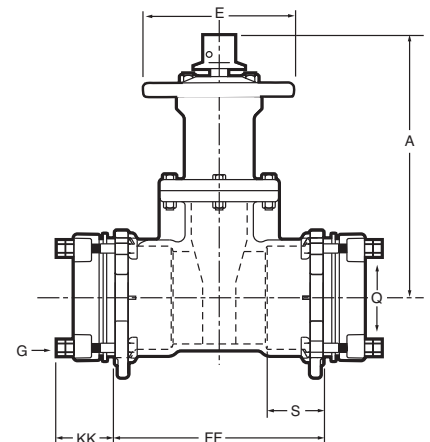
Parts List

Catalog Part Number	Description	Material	Material Standard
G-16	Bonnet Bolts & Nuts	316 Stainless Steel	ASTM F593 (bolt)/ASTM F594 (nut)
G-27	Wrench Nut	Ductile Iron	ASTM A536 ▼
G-41	Stuffing Box Bolts and Nuts	316 Stainless Steel	ASTM F593 (bolt)/ASTM F594 (nut)
G-49	Stem O-rings (3)	Nitrile	ASTM D2000
G-152	Stuffing Box	Ductile Iron	ASTM A536 ▼
G-200	Wrench Nut Cap Screw	316 Stainless Steel	ASTM F593
G-201	Stuffing Box Seal	Nitrile	ASTM D2000
G-203	Stem	Bronze	ASTM B138
G-205	Stem Nut	Bronze	ASTM B584
G-206	Guide Cap Bearings	Acetal	-
G-208	Anti-friction Washers (2)	Acetal	-
G-209	Wedge/Rubber Encapsulated	Ductile Iron**	ASTM A536 ▼
G-210	Bonnet	Ductile Iron	ASTM A536 ▼
G-211	Bonnet Gasket	Nitrile	ASTM D2000
G-212	Body	Ductile Iron	ASTM A536 ▼
G-213	Double O-ring***	EPDM	ASTM D2000
G-214	Intermediate Ring***	Ductile Iron	ASTM A536 ▼
G-215	Gripper Ring***	Ductile Iron	ASTM A536 ▼
G-216	End Ring***	Ductile Iron	ASTM A536 ▼
G-217	Breakaway Nut with Washer***	Steel	ASTM A108/Zinc Plated
G-218	T-head Bolt (not shown)	Steel	ASTM A242/Low Alloy (Corten)



Dimensions

Dimension*	Size				
	4"	6"	8"	10"	12"
A	14.19	18.00	21.50	25.50	28.62
E	12.00	12.00	12.00	12.00	12.00
FF	12.68	15.12	16.94	18.06	18.90
G (number and size of holes for AquaGrip)	4--.88"	4--.88"	6--.88"	8--.88"	8--.88"
Q (bore)	4.30	6.30	8.30	10.30	12.30
S	3.70	3.70	3.70	3.89	3.89
KK	2.75	3.75	3.75	3.75	3.75
Turns to open	14	20.5	26.5	33.0	38.5
Weight (lbs.)*	129	172	266	390	485



See page B-1-18 for ordering instructions.

*All dimensions are in inches. All weights are in approximate pounds.

**Fully encapsulated in molded rubber with no iron exposed.

***Parts for AquaGrip connection not shown - one required for each AquaGrip connection.

▼ Material strength ASTM A536 65-45 minimum

SECTION
B-1

Rev. 7-17

Shaded area indicates change

**N.R.S. RESILIENT WEDGE
GATE VALVE WITH
AQUAGRIP® x MJ. ENDS**



UL / FM

FIRE PROTECTION PRODUCTS

P-2361-78 AQUAGRIP ENDS X MECHANICAL JOINT FOR DIPS
Indicator Post Style Stuffing Box
2" Square Wrench Nut

- 4", 6", 8", 10", 12" size for DIPS
- 4", 6", 8" size for DIPS for IPS
- UL 262 Listed and FM 1120/1130 Approved and certified to ANSI/NSF 61 & 372
- Iron body with Mueller® PRO-GARD® Fusion Bonded Epoxy Coated interior and exterior surfaces
- Non-rising bronze stem
- Mechanical joint ends comply with ANSI/AWWA C111

P-2361-88 AQUAGRIP ENDS X MECHANICAL JOINT FOR IPS
Indicator Post Style Stuffing Box
2" Square Wrench Nut

- Rubber encapsulated iron wedge
- 200psig (1375 kPa/14 barg) maximum working pressure, 400psig (2800 kPa/28 barg) static test
- Triple O-ring seal (2 above the thrust collar and 1 below)
- Epoxy coating meets or exceeds all applicable requirements ANSI/AWWA C550
- Meets or exceeds all applicable requirements of ANSI/AWWA C515

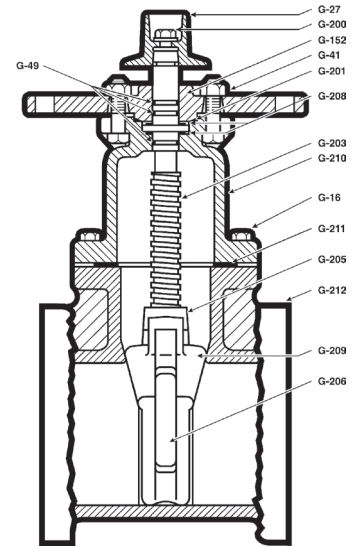


Options

- Stainless steel stem: Type 304 and Type 316
- Low zinc, silicon bronze ASTM B98-C66100/H02 stem
- EPDM disc and o-rings

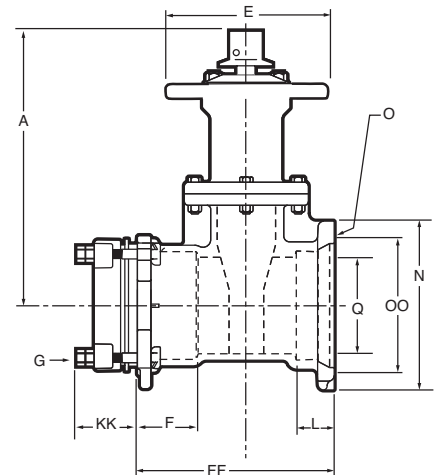
Parts List

Catalog Part Number	Description	Material	Material Standard
G-16	Bonnet Bolts & Nuts	316 Stainless Steel	ASTM F593 (bolt)/ASTM F594 (nut)
G-27	Wrench Nut	Ductile Iron	ASTM A536 ▼
G-41	Stuffing Box Bolts and Nuts	316 Stainless Steel	ASTM F593 (bolt)/ASTM F594 (nut)
G-49	Stem O-rings (3)	Nitrile	ASTM D2000
G-152	Stuffing Box	Ductile Iron	ASTM A536 ▼
G-200	Wrench Nut Cap Screw	316 Stainless Steel	ASTM F593
G-201	Stuffing Box Seal	Nitrile	ASTM D2000
G-203	Stem	Bronze	ASTM B138
G-205	Stem Nut	Bronze	ASTM B584
G-206	Guide Cap Bearings	Acetal	-
G-208	Anti-friction Washers (2)	Acetal	-
G-209	Wedge/Rubber Encapsulated	Ductile Iron**	ASTM A536 ▼
G-210	Bonnet	Ductile Iron	ASTM A536 ▼
G-211	Bonnet Gasket	Nitrile	ASTM D2000
G-212	Body	Ductile Iron	ASTM A536 ▼
G-213	Double O-ring***	EPDM	ASTM D2000
G-214	Intermediate Ring***	Ductile Iron	ASTM A536 ▼
G-215	Gripper Ring***	Ductile Iron	ASTM A536 ▼
G-216	End Ring***	Ductile Iron	ASTM A536 ▼
G-217	Breakaway Nut with Washer***	Steel	ASTM A108/Zinc Plated
G-218	T-head Bolt (not shown)	Steel	ASTM A242/Low Alloy (Corten)



Dimensions

Dimension*	Size				
	4"	6"	8"	10"	12"
A	14.19	18.00	21.50	25.50	28.62
E	12.00	12.00	12.00	12.00	12.00
F	3.50	3.70	3.70	3.89	3.89
G (number and size of holes for AquaGrip)	4--.88"	4--.88"	6--.88"	8--.88"	8--.88"
L	2.50	2.50	2.50	2.50	2.50
N	9.03	11.06	13.31	15.63	17.88
O (number and size of holes for MJ)	4--.88"	6--.88"	6--.88"	8--.88"	8--.88"
Q (bore)	4.30	6.30	8.30	10.30	12.30
FF	11.34	13.37	14.81	16.4	16.87
KK	2.75	3.75	3.75	3.75	3.75
OO (bolt circle diameter for MJ)	7.50	9.50	11.75	14.00	16.25
Turns to open	14	20.5	26.5	33.00	38.5
Weight (lbs.)*	118	179	274	405	575



See page B-1-18 for ordering instructions.

*All dimensions are in inches. All weights are in approximate pounds.

**Fully encapsulated in molded rubber with no iron exposed.

***Parts for AquaGrip connection not shown - one required for each AquaGrip connection.

▼ Material strength ASTM A536 65-45 minimum

FIRE PROTECTION PRODUCTS

P-2361-6 FLANGED ENDS Indicator Post Style Stuffing box 2" Square Operating Nut

- 4", 6", 8", 10" and 12" sizes
- UL 262 Listed and FM 1120/1130 Approved and certified to ANSI/NSF 61 & 372
- Iron body with Mueller® PRO-GARD® Fusion Bonded Epoxy Coated interior and exterior surfaces
- Non-rising bronze stem
- Rubber encapsulated iron wedge
- 350psig (2400 kPa/24 barg) maximum working pressure, 700psig (4800 kPa/48 barg) static test
- Triple O-ring seal (2 above the thrust collar and 1 below)
- Epoxy coating meets or exceeds all applicable requirements ANSI/AWWA C550
- Flanged end drilling complies with ASME/ANSI B16.1 class 125 and B16.42 class 150***
- Meets or exceeds all applicable requirements of ANSI/AWWA C515

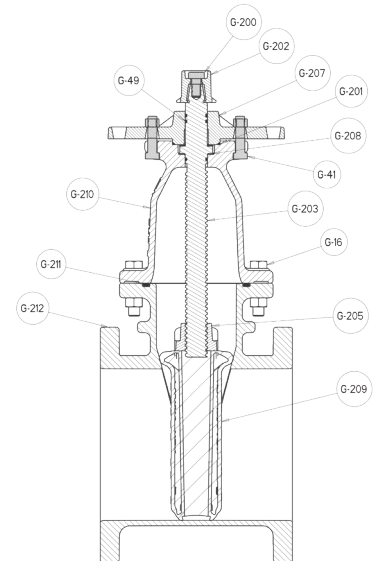


Options

- Stainless steel stem: Type 304 and Type 316
- Low zinc, silicon bronze ASTM B98-C66100/H02 stem
- EPDM disc and o-rings

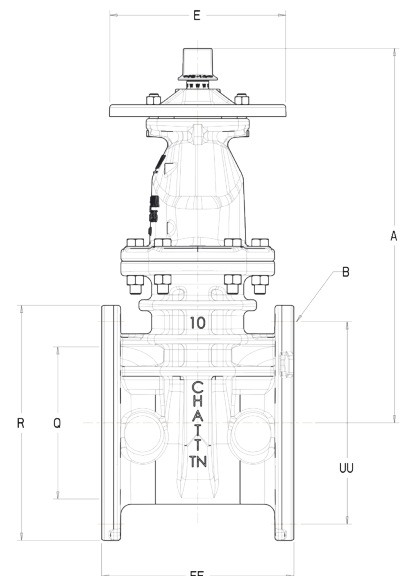
Parts List

Catalog Part Number	Description	Material	Material Standard
G-16	Bonnet Bolts & Nuts	316 Stainless Steel	ASTM F593 (bolt)/ASTM F594 (nut)
G-27	Wrench Nut	Ductile Iron	ASTM A536 ▼
G-41	Stuffing Box Bolts and Nuts	316 Stainless Steel	ASTM F593 (bolt)/ASTM F594 (nut)
G-49	Stem O-rings (3)	Nitrile	ASTM D2000
G-152	Stuffing Box with dirt seal	Ductile Iron	ASTM A536 ▼
G-200	Wrench Nut Cap Screw	316 Stainless Steel	ASTM F593
G-201	Stuffing Box Seal	Nitrile	ASTM D2000
G-203	Stem	Bronze	ASTM B138
G-205	Stem Nut	Bronze	ASTM B584
G-206	Guide Cap Bearings	Acetal	-
G-208	Anti-friction Washers (2)	Acetal	-
G-209	Wedge/Rubber Encapsulated	Ductile Iron**	ASTM A536 ▼
G-210	Bonnet	Ductile Iron	ASTM A536 ▼
G-211	Bonnet O-ring	Nitrile	ASTM D2000
G-212	Body	Ductile Iron	ASTM A536 ▼



Dimensions

Dimension*	Size				
	4"	6"	8"	10"	12"
A	14.19	18.00	21.50	25.50	28.62
R	9.00	11.00	13.50	16.00	19.00
FF	9.00	10.50	11.50	13.00	14.00
E	12.00	12.00	12.00	12.00	12.00
Q (bore)	4.30	6.30	8.30	10.30	12.30
UU	7.50	9.50	11.75	14.25	17.00
B (number and size of holes)	8--.75"	8--.88"	8--.88"	12--.1.00"	12--.1.00"
Turns to open	14	20.5	26.5	33	38.5
Weight (lbs.)*	98	154	232	344	459



See page B-1-18 for ordering instructions.

*All dimensions are in inches. All weights are in approximate pounds.

** Fully encapsulated in molded rubber with no iron exposed.

▼ Material strength ASTM A536 65-45 minimum

*** Per ANSI/AWWA C111, working pressure above 250psi requires the use of a special gasket rated for the higher pressure.

**N.R.S. RESILIENT WEDGE
GATE VALVES
CLASS 250 FLANGED ENDS**

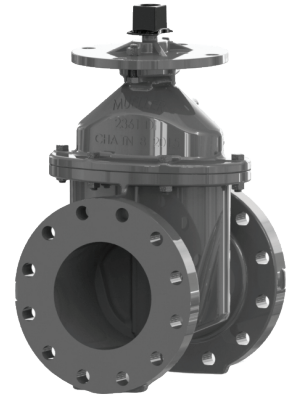


UL / FM

FIRE PROTECTION PRODUCTS

P-2361-12 CLASS 250 FLANGED ENDS
Indicator Post Style Stuffing box
2" Square Operating Nut

- 4", 6", 8", 10" and 12" sizes
- UL 262 Listed and FM 1120/1130 Approved and certified to ANSI/NSF 61 & 372
- Iron body with Mueller® PRO-GARD® Fusion Bonded Epoxy Coated interior and exterior surfaces
- Non-rising bronze stem
- Rubber encapsulated iron wedge
- 350psig (2400 kPa/24 barg) maximum working pressure, 700psig (4800 kPa/48 barg) static test
- Triple O-ring seal (2 above the thrust collar and 1 below)
- Epoxy coating meets or exceeds all applicable requirements ANSI/AWWA C550
- Flanged end drilling complies with ASME/ANSI B16.1 class 250
- Meets or exceeds all applicable requirements of ANSI/AWWA C515

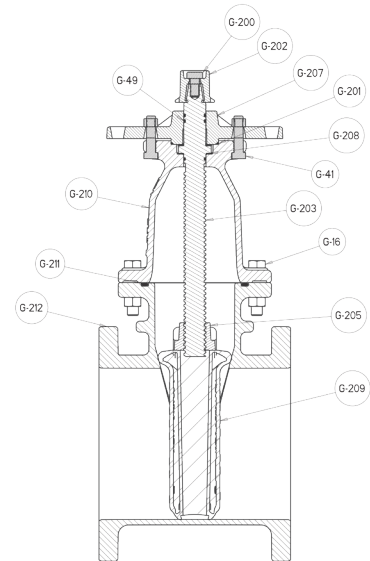


Options

- Stainless steel stem: Type 304 and Type 316
- Low zinc, silicon bronze ASTM B98-C66100/H02 stem
- EPDM disc and o-rings

Parts List

Catalog Part Number	Description	Material	Material Standard
G-16	Bonnet Bolts & Nuts	316 Stainless Steel	ASTM F593 (bolt)/ASTM F594 (nut)
G-27	Wrench Nut	Ductile Iron	ASTM A536 ▼
G-41	Stuffing Box Bolts and Nuts	316 Stainless Steel	ASTM F593 (bolt)/ASTM F594 (nut)
G-49	Stem O-rings (3)	Nitrile	ASTM D2000
G-152	Stuffing Box with dirt seal	Ductile Iron	ASTM A536 ▼
G-200	Wrench Nut Cap Screw	316 Stainless Steel	ASTM F593
G-201	Stuffing Box Seal	Nitrile	ASTM D2000
G-203	Stem	Bronze	ASTM B138
G-205	Stem Nut	Bronze	ASTM B584
G-206	Guide Cap Bearings	Acetal	-
G-208	Anti-friction Washers (2)	Acetal	-
G-209	Wedge/Rubber Encapsulated	Ductile Iron**	ASTM A536 ▼
G-210	Bonnet	Ductile Iron	ASTM A536 ▼
G-211	Bonnet O-ring	Nitrile	ASTM D2000
G-212	Body	Ductile Iron	ASTM A536 ▼



Dimensions

Dimension*	Size				
	4"	6"	8"	10"	12"
A	14.19	18.00	21.50	25.50	28.62
R	10.00	12.50	15.00	17.50	20.50
FF	12.00	15.88	16.50	18.00	19.75
E	12.00	12.00	12.00	12.00	12.00
Q (bore)	4.30	6.30	8.30	10.30	12.30
UU	7.88	10.63	12.99	15.24	17.76
B (number and size of holes)	8--.88"	12--.88"	12--1.125"	16--1.125"	16--1.25"
Turns to open	14	20.5	26.5	33	38.5
Weight (lbs.)*	123	202	310	471	611

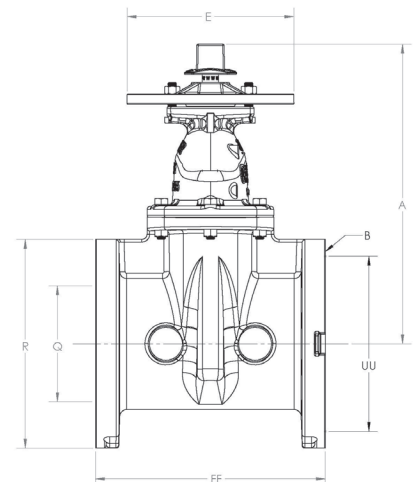
See page B-1-18 for ordering instructions.

*All dimensions are in inches. All weights are in approximate pounds.

** Fully encapsulated in molded rubber with no iron exposed.

▼ Material strength ASTM A536 65-45 minimum

*** Per ANSI/AWWA C111, working pressure above 250psi requires the use of a special gasket rated for the higher pressure.



FIRE PROTECTION PRODUCTS

P-2361-6 FLANGED ENDS
Indicator Post Style Stuffing box
2" Square Operating Nut

- 14", 16", 18", 20" and 24" sizes
- UL 262 Listed, FM 1120/1130 Approved, and certified to ANSI/NSF 61 & 372
- Iron body with Mueller® PRO-GARD® Fusion Bonded Epoxy Coated interior and exterior surfaces
- Non-rising bronze stem
- Rubber encapsulated iron wedge
- 14"-16" 250psig (1725 kPa/17 barg) maximum working pressure, 500psig (3450 kPa/35 barg) hydro static test
- 18"-24" UL Listed 175psig (1200 kPa/12 barg) maximum working pressure, FM Approved 250psig (1725 kPa/17 barg), 500psig (3450 kPa/35 barg) hydro static test
- Triple O-ring seal (2 above the thrust collar and 1 below)
- Epoxy coating meets or exceeds all applicable requirements ANSI/AWWA C550
- Flanged end drilling complies with ASME/ANSI B16.1 class 125 and B16.42 class 150
- Meets or exceeds all applicable requirements of ANSI/AWWA C515

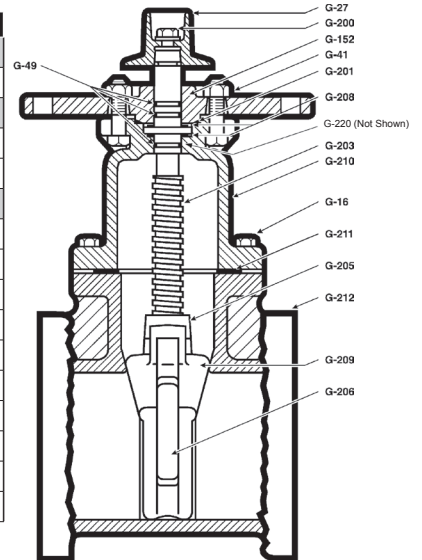


Options

- Stainless steel stem: Type 304 and Type 316
- Low zinc, silicon bronze ASTM B98-C66100/H02 stem
- EPDM disc and o-rings (14"-16 option and 18"-24" standard)

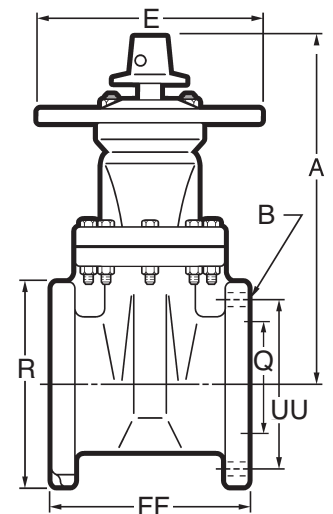
Parts List

Catalog Part Number	Description	Material	Material Standard
G-16	Bonnet Bolts & Nuts	316 Stainless steel	ASTM F593 (bolt) / ASTM F594 (nut)
G-27	Wrench Nut	Cast Iron++	ASTM A126 CL.B
G-41	Stuffing Box Bolts & Nuts	316 Stainless steel	ASTM F593 (bolt) / ASTM F594 (nut)
G-49	Stem O-rings (3)	Nitrile+	ASTM D2000
G-152	Stuffing Box	Ductile Iron	ASTM A536 ▼
G-200	Wrench Nut Cap Screw	316 Stainless steel	ASTM F593
G-201	Stuffing Box Seal	Nitrile+	ASTM D2000
G-203	Stem	Bronze	ASTM B138***
G-205	Stem Nut	Bronze	ASTM B62
G-206	Guide Cap Bearings	Acetal	-
G-208	Anti-friction Washers (2)	Brass	ASTM B21
G-209	Wedge, Rubber Encapsulated	Ductile Iron**+	ASTM A536 ▼
G-210	Bonnet	Ductile Iron	ASTM A536 ▼
G-211	Bonnet O-ring	Nitrile+	ASTM D2000
G-220	Bonnet Bushings (18"-24")	Brass	ASTM B62
G-212	Body	Ductile Iron	ASTM A536 ▼



Dimensions

Dimension*	Size				
	14"	16"	18"	20"	24"
A	32.75"	37.88"	44.19"	48.25"	53.88"
R	21.00"	23.50"	25.00"	27.50"	32.00"
FF	15.06"	16.06"	17.00"	18.00"	20.00"
E	12.00"	12.00"	12.00"	12.00"	12.00"
Q (bore)	14.38"	16.00"	18.35"	20.38"	24.38"
UU	18.75"	21.25"	22.75"	25.00"	29.50"
B (number and size of holes)	12-1.125"	16-1.125"	16-1.25"	20-1.25"	20-1.35"
Turns to open	43.5	49	57	63	75
Weight (lbs.)*	659	841	1298	1640	2488



See page B-1-18 for ordering instructions.

*All dimensions are in inches. All weights are in approximate pounds.

** Fully encapsulated in molded rubber with no iron exposed.

*** 18" - 24" ASTM B584

+ 14"-16", 18"-54" EPDM ASTM D2000

++ Manufacturer's option to upgrade material to Ductile iron ASTM A536

▼ Material strength ASTM A536 65-45 minimum

SECTION
B-1

Rev. 11-17

Shaded area indicates change

**N.R.S. RESILIENT WEDGE
GATE VALVES FL X MJ**



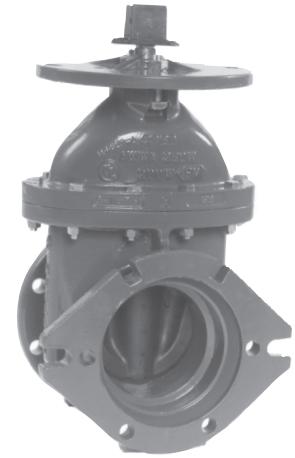
UL / FM

FIRE PROTECTION PRODUCTS

P-2361-16 (with M.J. Accessories+)
P-2361-19 (less M.J. Accessories)

FLANGED X MECHANICAL JOINT ENDS
Indicator Post Style Stuffing box
2" Square Operating Nut

- 4", 6", 8", 10" and 12" sizes
- UL 262 Listed and FM 1120/1130 Approved and certified to ANSI/NSF 61 & 372
- Iron body with Mueller® PRO-GARD® Fusion Bonded Epoxy Coated interior and exterior surfaces
- Non-rising bronze stem
- Rubber encapsulated iron wedge
- Mechanical joint ends comply with ANSI/AWWA C111
- 350psig (2400 kPa/24 barg) maximum working pressure, 700psig (4800 kPa/48 barg) static test pressure
- Triple O-ring seal (2 above the thrust collar and 1 below)
- Epoxy coating meets or exceeds all applicable requirements ANSI/AWWA C550
- Flanged end drilling complies with ASME/ANSI B16.1 class 125 and B16.42 class 150***
- Meets or exceeds all applicable requirements of ANSI/AWWA C515

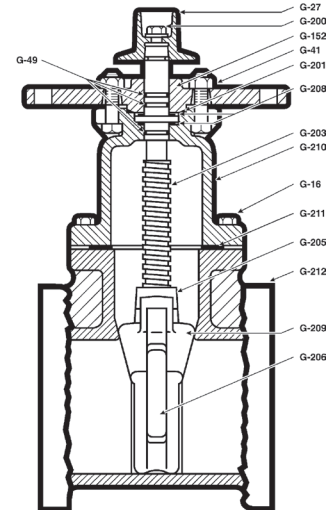


Options

- Stainless steel stem: Type 304 and Type 316
- Low zinc, silicon bronze ASTM B98-C66100/H02 stem
- EPDM disc and o-rings

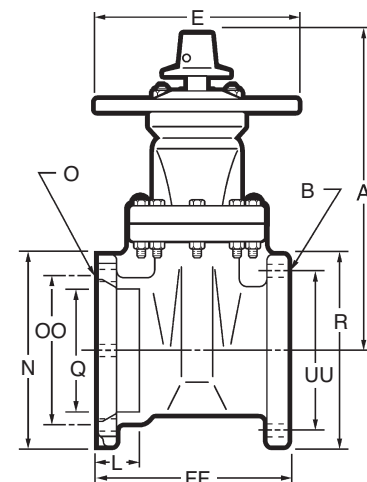
Parts List

Catalog Part Number	Description	Material	Material Standard
G-16	Bonnet Bolts & Nuts	316 Stainless Steel	ASTM F593 (bolt)/ASTM F594 (nut)
G-27	Wrench Nut	Ductile Iron	ASTM A536 ▼
G-41	Stuffing Box Bolts and Nuts	316 Stainless Steel	ASTM F593 (bolt)/ASTM F594 (nut)
G-49	Stem O-rings (3)	Nitrile	ASTM D2000
G-152	Stuffing Box	Ductile Iron	ASTM A536 ▼
G-200	Wrench Nut Cap Screw	316 Stainless Steel	ASTM F593
G-201	Stuffing Box with dirt seal	Nitrile	ASTM D2000
G-203	Stem	Bronze	ASTM B138
G-205	Stem Nut	Bronze	ASTM B584
G-206	Guide Cap Bearings	Acetal	-
G-208	Anti-friction Washers (2)	Acetal	-
G-209	Wedge/Rubber Encapsulated	Ductile Iron**	ASTM A536 ▼
G-210	Bonnet	Ductile Iron	ASTM A536 ▼
G-211	Bonnet O-ring	Nitrile	ASTM D2000
G-212	Body	Ductile Iron	ASTM A536 ▼



Dimensions

Dimension*	Size				
	4"	6"	8"	10"	12"
A	14.19	18.00	21.50	25.50	28.62
R	9.00	11.00	13.50	16.00	19.00
FF	9.50	11.06	12.09	13.94	14.50
E	12.00	12.00	12.00	12.00	12.00
UU (bolt circle for FL)	7.50	9.50	11.75	14.25	17.00
Q (bore)	4.30	6.30	8.30	10.30	12.30
OO (bolt circle for MJ)	7.50	9.50	11.75	14.00	16.25
N	9.12	11.12	13.37	15.62	17.88
L	2.50	2.50	2.50	2.50	2.50
B (number and size of holes for FL)	8--.75"	8--.88"	8--.88"	12--1.00"	12--1.00"
O (bolt circle diameter for MJ)	4--.88"	6--.88"	6--.88"	8--.88"	8--.88"
Turns to open	14	20.5	26.5	33	38.5
Weight (lbs.)*	120	152	264	397	522



See page B-1-18 for ordering instructions.

+ MJ accessories are included and palletized separately from valves.

*All dimensions are in inches. All weights are in approximate pounds.

**Fully encapsulated in molded rubber with no iron exposed.

▼ Material strength ASTM A536 65-45 minimum

*** Per ANSI/AWWA C111, working pressure above 250psi requires the use of a special gasket rated for the higher pressure.

FIRE PROTECTION PRODUCTS

P-2361-16 (with M.J. Accessories*)
P-2361-19 (less M.J. Accessories)

FLANGED X MECHANICAL JOINT ENDS
Indicator Post Style Stuffing box
2" Square Operating Nut

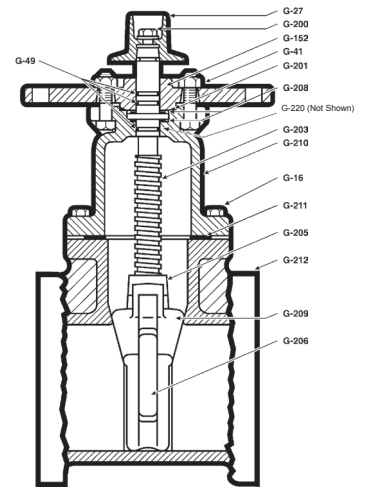
- 14", 16", 18", 20" and 24" SIZES
- UL 262 Listed, FM 1120/1130 Approved, and certified to ANSI/NSF 61 & 372
- Iron body with Mueller® PRO-GARD® Fusion Bonded Epoxy Coated interior and exterior surfaces
- Non-rising bronze stem
- Rubber encapsulated iron wedge
- Mechanical joint ends comply with ANSI/AWWA C111
- 14"-16" 250psig (1725 kPa/17 barg) maximum working pressure, 500psig (3450 kPa/35 barg) hydro static test
- 18"-24" UL Listed 175psig (1200 kPa/12 barg) maximum working pressure, FM Approved 250psig (1725 kPa/17 barg), 500psig (3450 kPa/35 barg) hydro static test
- Triple O-ring seal (2 above the thrust collar and 1 below)
- Epoxy coating meets or exceeds all applicable requirements ANSI/AWWA C550
- Flanged end drilling complies with ASME/ANSI B16.1 Class 125
- Meets or exceeds all applicable requirements of ANSI/AWWA C515
- EPDM disc and o-rings (14"-16 option and 18"-24" standard)

Options

- Stainless steel stem: Type 304 and Type 316
- Low zinc, silicon bronze ASTM B98-C66100/H02 stem

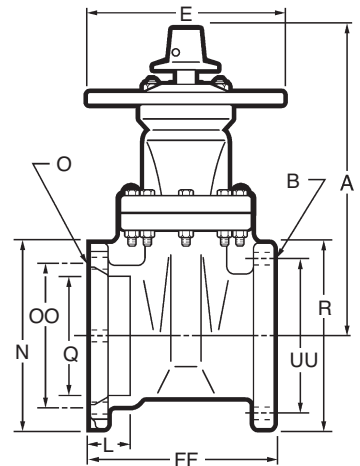
Parts List

Catalog Part Number	Description	Material	Material Standard
G-16	Bonnet Bolts & Nuts	316 Stainless steel	ASTM F593 (bolt) / ASTM F594 (nut)
G-27	Wrench Nut	Cast Iron+++	ASTM A126 CL.B
G-41	Stuffing Box Bolts & Nuts	316 Stainless steel	ASTM F593 (bolt) / ASTM F594 (nut)
G-49	Stem O-rings (3)	Nitrile++	ASTM D2000
G-152	Stuffing Box	Ductile Iron	ASTM A536 ▼
G-200	Wrench Nut Cap Screw	316 Stainless steel	ASTM F593
G-201	Stuffing Box Seal	Nitrile++	ASTM D2000
G-203	Stem	Bronze	ASTM B138***
G-205	Stem Nut	Bronze	ASTM B62
G-206	Guide Cap Bearings	Acetal	-
G-208	Anti-friction Washers (2)	Brass	ASTM B21
G-209	Wedge, Rubber Encapsulated	Ductile Iron**	ASTM A536 ▼
G-210	Bonnet	Ductile Iron	ASTM A536 ▼
G-211	Bonnet O-ring	Nitrile++	ASTM D2000
G-220	Bonnet Bushings (18"-24")	Brass	ASTM B62
G-212	Body	Ductile Iron	ASTM A536 ▼



Dimensions

Dimension*	Size				
	14"	16"	18"	20"	24"
A	32.75"	37.88"	44.19"	48.25"	53.88"
R	21.00"	23.50"	25.00"	27.50"	32.00"
FF	17.41"	17.91"	19.00"	19.75"	21.75"
E	12.00"	12.00"	12.00"	12.00"	12.00"
UU (bolt circle for FL)	18.75"	21.25"	22.75"	25.00"	29.50"
Q (bore)	14.38"	16.00"	18.38"	20.38"	24.38"
OO (bolt circle for MJ)	18.75"	21.00"	23.25"	25.5"	30.0"
N	20.25"	22.56"	24.88"	27.25"	31.88"
L	3.50"	3.50"	3.50"	3.50"	3.50"
B (number and size of holes for FL)	12-1.12"	16-1.12"	16-1.25"	20-1.25"	20-1.38"
O (number and size of holes for MJ)	10-0.88"	12-0.88"	12-0.88"	14-0.88"	16-0.88"
Turns to open	43.5	49	57	63	75
Weight (lbs.)*	655	875	1298	1640	2423



See page B-1-18 for ordering instructions.

+ MJ accessories are included and palletized separately from valves.

*All dimensions are in inches. All weights are in approximate pounds.

**Fully encapsulated in molded rubber with no iron exposed.

*** 18" - 24" ASTM B584

+++ 14"-16"/18"-24" EPDM ASTM D2000

+++ Manufacturer's option to upgrade material to Ductile iron ASTM A536

▼ Material strength ASTM A536 65-45 minimum

N.R.S. RESILIENT WEDGE GATE VALVES MECHANICAL JOINT

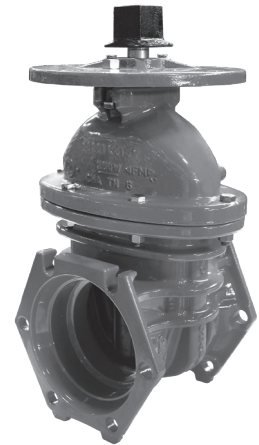


P-2361-20 (with M.J. Accessories*)
P-2361-23 (less M.J. Accessories)

MECHANICAL JOINT ENDS
Indicator Post Style Stuffing box
2" Square Operating Nut

- 4", 6", 8", 10" and 12" sizes
- UL 262 Listed and FM 1120/1130 Approved and certified to ANSI/NSF 61 & 372
- Iron body with Mueller® PRO-GARD® Fusion Bonded Epoxy Coated interior and exterior surfaces
- Non-rising bronze stem
- Rubber encapsulated iron wedge

- Mechanical joint ends comply with ANSI/AWWA C111
- 350psig (2400 kPa/24 barg) maximum working pressure, 700psig (4800 kPa/48 bar) static test
- Triple O-ring seal (2 above the thrust collar and 1 below)
- Epoxy coating meets or exceeds all applicable requirements ANSI/AWWA C550
- Meets or exceeds all applicable requirements of ANSI/AWWA C515

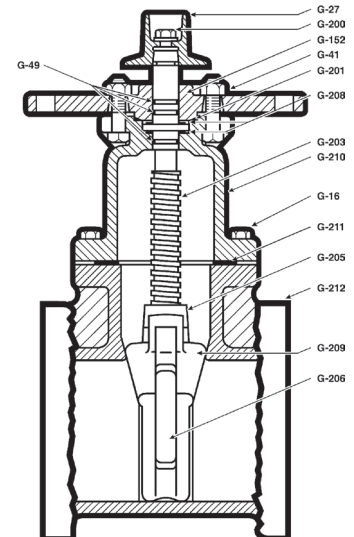


Options

- Stainless steel stem: Type 304 and Type 316
- Low zinc, silicon bronze ASTM B98-C66100/H02 stem
- EPDM disc and o-rings

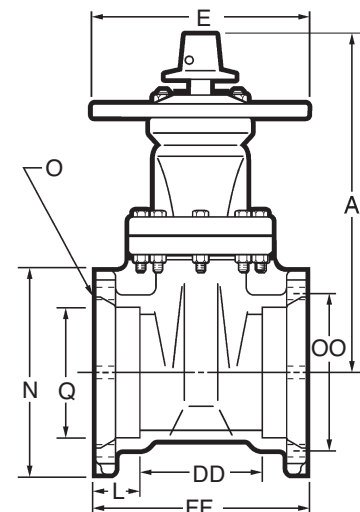
Parts List

Catalog Part Number	Description	Material	Material Standard
G-16	Bonnet Bolts & Nuts	316 Stainless Steel	ASTM F593 (bolt)/ ASTM F594 (nut)
G-27	Wrench Nut	Ductile Iron	ASTM A536 ▼
G-41	Stuffing Box Bolts & Nuts	316 Stainless Steel	ASTM F593 (bolt)/ ASTM F594 (nut)
G-49	Stem O-rings (3)	Nitrile	ASTM D2000
G-152	Stuffing Box	Ductile Iron	ASTM A536 ▼
G-200	Wrench Nut Cap Screw	316 Stainless Steel	ASTM F593
G-201	Stuffing Box with dirt seal	Nitrile	ASTM D2000
G-203	Stem	Bronze	ASTM B138
G-205	Stem Nut	Bronze	ASTM B584
G-206	Guide Cap Bearings	Acetal	-
G-208	Anti-friction Washers (2)	Acetal	-
G-209	Wedge, Rubber Encapsulated	Ductile Iron**	ASTM A536 ▼
G-210	Bonnet	Ductile Iron	ASTM A536 ▼
G-211	Bonnet O-ring	Nitrile	ASTM D2000
G-212	Body	Ductile Iron	ASTM A536 ▼



Dimensions

Dimension*	Size				
	4"	6"	8"	10"	12"
A	14.19	18.00	21.50	25.50	28.62
FF	10.00	11.60	12.68	14.88	15.0
E	12.00	12.00	12.00	12.00	12.00
Q (bore)	4.30	6.30	8.30	10.30	12.30
OO	7.50	9.50	11.75	14.00	16.25
N	9.12	11.12	13.37	15.62	17.88
L	2.50	2.50	2.50	2.50	2.50
DD	5.00	6.6	7.68	9.88	10
O (number and size of holes)	4--.88"	6--.88"	6--.88"	8--.88"	8--.88"
Turns to open	14	20.5	26.5	33	38.5
Weight (lbs.)*	115	174	261	373	498



See page B-1-18 for ordering instructions.

+MJ accessories are included and palletized separately from valves.

*All dimensions are in inches. All weights are in approximate pounds.

**Fully encapsulated in molded rubber with no iron exposed.

▼ Material strength ASTM A536 65-45 minimum

FIRE PROTECTION PRODUCTS

P-2361-20 (with M.J. Accessories*)
P-2361-23 (less M.J. Accessories)

MECHANICAL JOINT ENDS
 Indicator Post Style Stuffing box
 2" Square Operating Nut

- 14", 16", 18", 20" and 24" sizes
- UL 262 Listed, FM 1120/1130 Approved, and certified to ANSI/NSF 61 & 372
- Iron body with Mueller® PRO-GARD® Fusion Bonded Epoxy Coated interior and exterior surfaces
- Non-rising bronze stem
- Rubber encapsulated iron wedge
- Mechanical joint ends comply with ANSI/AWWA C111
- 14"-16" 250psig (1725 kPa/17 barg) maximum working pressure, 500psig (3450 kPa/35 barg) hydro static test
- 18"-24" UL Listed 175psig (1200 kPa/12 barg) maximum working pressure, FM Approved 250psig (1725 kPa/17 barg), 500psig (3450 kPa/35 barg) hydro static test
- Triple O-ring seal (2 above the thrust collar and 1 below)
- Epoxy coating meets or exceeds all applicable requirements ANSI/AWWA C550
- Meets or exceeds all applicable requirements of ANSI/AWWA C515

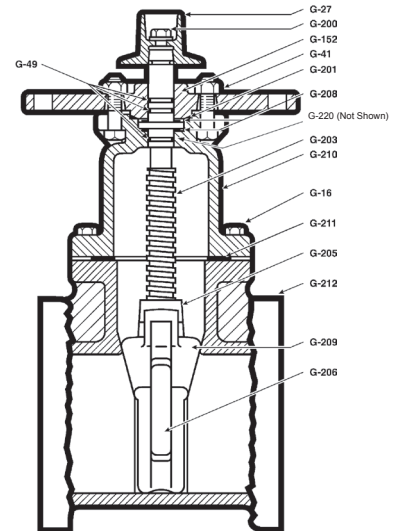


Options

- Stainless steel stem: Type 304 and Type 316
- Low zinc, silicon bronze ASTM B98-C66100/H02 stem
- EPDM disc and o-rings (14"-16 option and 18"-24" standard)

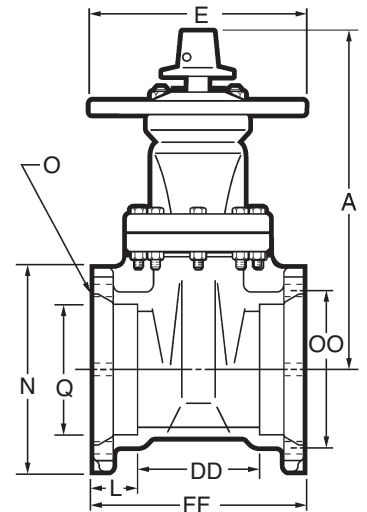
Parts List

Catalog Part Number	Description	Material	Material Standard
G-16	Bonnet Bolts & Nuts	316 Stainless steel	ASTM F593 (bolt) / ASTM F594 (nut)
G-27	Wrench Nut	Cast Iron+++	ASTM A126 CL.B
G-41	Stuffing Box Bolts & Nuts	316 Stainless steel	ASTM F593 (bolt) / ASTM F594 (nut)
G-49	Stem O-rings (3)	Nitrile++	ASTM D2000
G-152	Stuffing Box	Ductile Iron	ASTM A536 ▼
G-200	Wrench Nut Cap Screw	316 Stainless steel	ASTM F593
G-201	Stuffing Box Seal	Nitrile++	ASTM D2000
G-203	Stem	Bronze	ASTM B138***
G-205	Stem Nut	Bronze	ASTM B62
G-206	Guide Cap Bearings	Acetal	-
G-208	Anti-friction Washers (2)	Brass	ASTM B21
G-209	Wedge, Rubber Encapsulated	Ductile Iron**	ASTM A536 ▼
G-210	Bonnet	Ductile Iron	ASTM A536 ▼
G-211	Bonnet O-ring	Nitrile++	ASTM D2000
G-220	Bonnet Bushings (18"-24")	Brass	ASTM B62
G-212	Body	Ductile Iron	ASTM A536 ▼



Dimensions

Dimension*	Size				
	14"	16"	18"	20"	24"
A	32.75"	37.88"	44.19"	48.25"	53.88"
FF	19.88"	19.75"	21.00"	21.50"	23.50"
E	12.00"	12.00"	12.00"	12.00"	12.00"
Q (Bore)	14.38"	16.00"	18.38"	20.38"	24.38"
OO (Bolt circle for MJ)	18.75"	21.00"	23.25"	25.50"	30.00"
N	20.62"	22.56"	24.88"	27.24"	31.88"
L	3.50"	3.50"	3.50"	3.50"	3.50"
DD	12.36"	12.55"	13.90"	14.13"	16.06"
O (number and size of holes)	10-0.88"	12-0.88"	12-0.88"	14-0.88"	16-0.88"
Turns to open	43.5	49	57	63	75
Weight (lbs.)*	650	931	1298	1640	2423



See page B-1-18 for ordering instructions.
 *MJ accessories are included and palletized separately from valves.
 *All dimensions are in inches. All weights are in approximate pounds.
 ** Fully encapsulated in molded rubber with no iron exposed.
 *** 18" - 24" ASTM B584
 ++ 14"-16" / 18"-24" EPDM ASTM D2000
 +++ Manufacturer's option to upgrade material to Ductile iron ASTM A536
 ▼ Material strength ASTM A536 65-45 minimum

**N.R.S. RESILIENT WEDGE
GATE VALVES
FLANGED ENDS**



UL / FM

FIRE PROTECTION PRODUCTS

P-2362-6 FLANGED ENDS
Indicator Post Style Stuffing box
2" Square Operating Nut

- 4", 6", 8", 10" and 12" sizes
- UL 262 Listed and FM 1120/1130 Approved and certified to ANSI/NSF 61 & 372
- Iron body with Mueller® PRO-GARD® Fusion Bonded Epoxy Coated interior and exterior surfaces
- Non-rising bronze stem
- Rubber encapsulated iron wedge
- 250psig (1725 kPa/17 barg) maximum working pressure, 500psig (3450 kPa/35 barg) static test
- Triple O-ring seal (2 above the thrust collar and 1 below)
- Epoxy coating meets or exceeds all applicable requirements ANSI/AWWA C550
- Flanged end drilling complies with ASME/ANSI B16.1 class 125 and B16.42 class 150***
- Meets or exceeds all applicable requirements of ANSI/AWWA C515

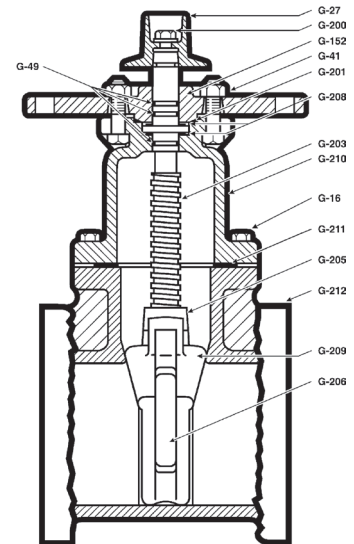


Options

- Stainless steel stem: Type 304 and Type 316
- Low zinc, silicon bronze ASTM B98-C66100/H02 stem
- EPDM disc and o-rings

Parts List

Catalog Part Number	Description	Material	Material Standard
G-16	Bonnet Bolts & Nuts	316 Stainless Steel	ASTM F593 (bolt)/ASTM F594 (nut)
G-27	Wrench Nut	Ductile Iron	ASTM A536 ▼
G-41	Stuffing Box Bolts and Nuts	316 Stainless Steel	ASTM F593 (bolt)/ASTM F594 (nut)
G-49	Stem O-rings (3)	Nitrile	ASTM D2000
G-152	Stuffing Box with dirt seal	Ductile Iron	ASTM A536 ▼
G-200	Wrench Nut Cap Screw	316 Stainless Steel	ASTM F593
G-201	Stuffing Box Seal	Nitrile	ASTM D2000
G-203	Stem	Bronze	ASTM B138
G-205	Stem Nut	Bronze	ASTM B584
G-206	Guide Cap Bearings	Acetal	-
G-208	Anti-friction Washers (2)	Acetal	-
G-209	Wedge/Rubber Encapsulated	Ductile Iron**	ASTM A536 ▼
G-210	Bonnet	Ductile Iron	ASTM A536 ▼
G-211	Bonnet O-ring	Nitrile	ASTM D2000
G-212	Body	Ductile Iron	ASTM A536 ▼



Dimensions

Dimension*	Size				
	4"	6"	8"	10"	12"
A	14.19	18.00	21.50	25.50	28.62
R	9.00	11.00	13.50	16.00	19.00
FF	9.00	10.50	11.50	13.00	14.00
E	12.00	12.00	12.00	12.00	12.00
Q (bore)	4.30	6.30	8.30	10.30	12.30
UU	7.50	9.50	11.75	14.25	17.00
B (number and size of holes)	8--.75"	8--.88"	8--.88"	12--1.00"	12--1.00"
Turns to open	14	20.5	26.5	33	38.5
Weight (lbs.)*	112	168	268	409	540

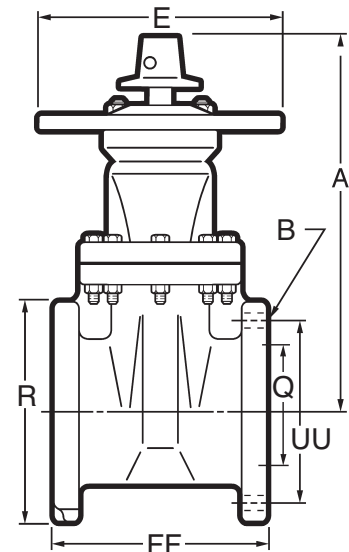
See page B-1-18 for ordering instructions.

*All dimensions are in inches. All weights are in approximate pounds.

** Fully encapsulated in molded rubber with no iron exposed.

▼ Material strength ASTM A536 65-45 minimum

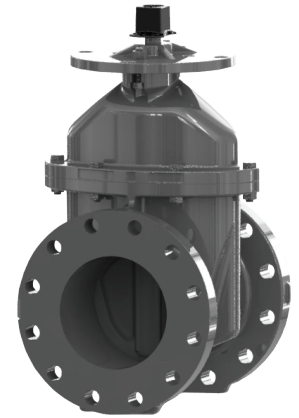
*** Per ANSI/AWWA C111, working pressure above 250psi requires the use of a special gasket rated for the higher pressure.



FIRE PROTECTION PRODUCTS

P-2362-12 CLASS 250 FLANGED ENDS Indicator Post Style Stuffing box 2" Square Operating Nut

- 4", 6", 8", 10" and 12" sizes
- UL 262 Listed and FM 1120/1130 Approved and certified to ANSI/NSF 61 & 372
- Iron body with Mueller® PRO-GARD® Fusion Bonded Epoxy Coated interior and exterior surfaces
- Non-rising bronze stem
- Rubber encapsulated iron wedge
- 350psig (2400 kPa/24 barg) maximum working pressure, 700psig (4800 kPa/48 barg) static test
- Triple O-ring seal (2 above the thrust collar and 1 below)
- Epoxy coating meets or exceeds all applicable requirements ANSI/AWWA C550
- Flanged end drilling complies with ASME/ANSI B16.1 class 250
- Meets or exceeds all applicable requirements of ANSI/AWWA C515

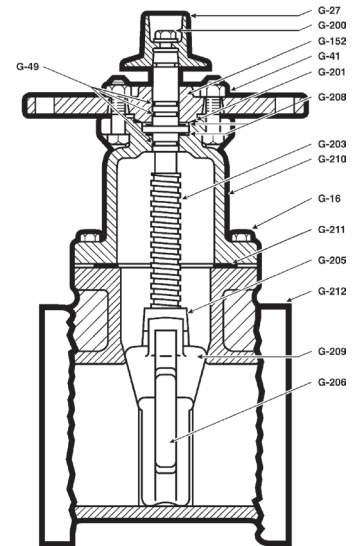


Options

- Stainless steel stem: Type 304 and Type 316
- Low zinc, silicon bronze ASTM B98-C66100/H02 stem
- EPDM disc and o-rings

Parts List

Catalog Part Number	Description	Material	Material Standard
G-16	Bonnet Bolts & Nuts	316 Stainless Steel	ASTM F593 (bolt)/ASTM F594 (nut)
G-27	Wrench Nut	Ductile Iron	ASTM A536 ▼
G-41	Stuffing Box Bolts and Nuts	316 Stainless Steel	ASTM F593 (bolt)/ASTM F594 (nut)
G-49	Stem O-rings (3)	Nitrile	ASTM D2000
G-152	Stuffing Box with dirt seal	Ductile Iron	ASTM A536 ▼
G-200	Wrench Nut Cap Screw	316 Stainless Steel	ASTM F593
G-201	Stuffing Box Seal	Nitrile	ASTM D2000
G-203	Stem	Bronze	ASTM B138
G-205	Stem Nut	Bronze	ASTM B584
G-206	Guide Cap Bearings	Acetal	-
G-208	Anti-friction Washers (2)	Acetal	-
G-209	Wedge/Rubber Encapsulated	Ductile Iron**	ASTM A536 ▼
G-210	Bonnet	Ductile Iron	ASTM A536 ▼
G-211	Bonnet O-ring	Nitrile	ASTM D2000
G-212	Body	Ductile Iron	ASTM A536 ▼



Dimensions

Dimension*	Size				
	4"	6"	8"	10"	12"
A	14.19	18.00	21.50	25.50	28.62
R	10.00	12.50	15.00	17.50	20.50
FF	12.00	15.88	16.50	18.00	19.75
E	12.00	12.00	12.00	12.00	12.00
Q (bore)	4.30	6.30	8.30	10.30	12.30
UU	7.88	10.63	12.99	15.24	17.76
B (number and size of holes)	8--.88"	12--.88"	12--1.125"	16--1.25"	16--1.25"
Turns to open	14	20.5	26.5	33	38.5
Weight (lbs.)*	137	216	346	536	692

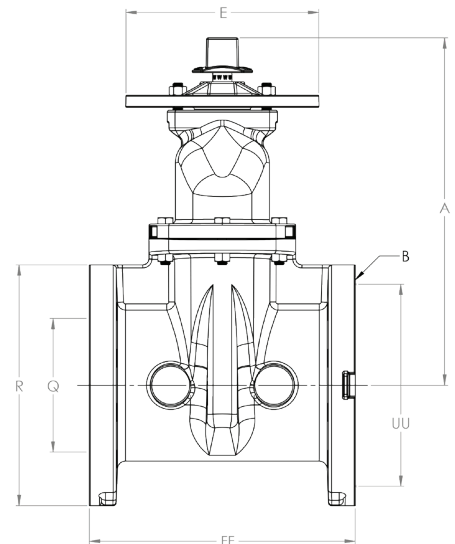
See page B-1-18 for ordering instructions.

*All dimensions are in inches. All weights are in approximate pounds.

** Fully encapsulated in molded rubber with no iron exposed.

▼ Material strength ASTM A536 65-45 minimum

*** Per ANSI/AWWA C111, working pressure above 250psi requires the use of a special gasket rated for the higher pressure.



SECTION
B-1

Rev. 7-17

Shaded area indicates change

**N.R.S. RESILIENT WEDGE
GATE VALVES FL X MJ**



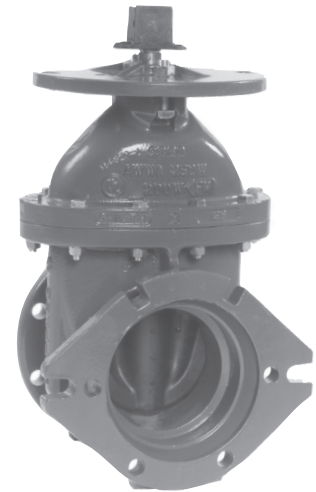
UL / FM

FIRE PROTECTION PRODUCTS

P-2362-16 (with M.J. Accessories*)
P-2362-19 (less M.J. Accessories)

FLANGED X MECHANICAL JOINT ENDS
Indicator Post Style Stuffing box
2" Square Operating Nut

- 4", 6", 8", 10" and 12" sizes
- UL 262 Listed and FM 1120/1130 Approved and certified to ANSI/NSF 61 & 372
- Iron body with Mueller® PRO-GARD® Fusion Bonded Epoxy Coated interior and exterior surfaces
- Non-rising bronze stem
- Rubber encapsulated iron wedge
- Mechanical joint ends comply with ANSI/AWWA C111
- 250psig (1725 kPa/17 barg) maximum working pressure, 500psig (3450 kPa/35 bar) static test pressure
- Triple O-ring seal (2 above the thrust collar and 1 below)
- Epoxy coating meets or exceeds all applicable requirements ANSI/AWWA C550
- Flanged end drilling complies with ASME/ANSI B16.1 class 125 and B16.42 class 150***
- Meets or exceeds all applicable requirements of ANSI/AWWA C515

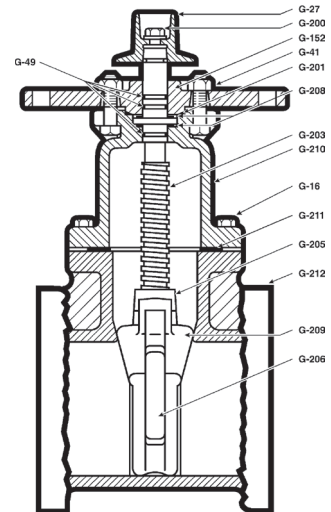


Options

- Stainless steel stem: Type 304 and Type 316
- Low zinc, silicon bronze ASTM B98-C66100/H02 stem
- EPDM disc and o-rings

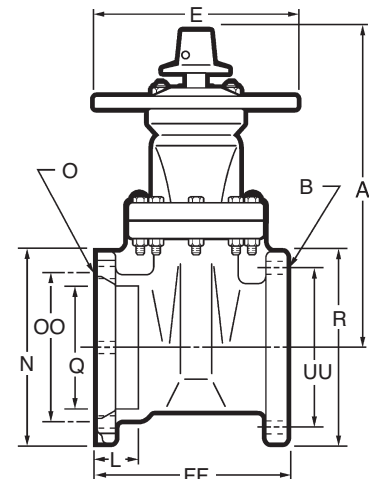
Parts List

Catalog Part Number	Description	Material	Material Standard
G-16	Bonnet Bolts & Nuts	316 Stainless Steel	ASTM F593 (bolt)/ASTM F594 (nut)
G-27	Wrench Nut	Ductile Iron	ASTM A536 ▼
G-41	Stuffing Box Bolts and Nuts	316 Stainless Steel	ASTM F593 (bolt)/ASTM F594 (nut)
G-49	Stem O-rings (3)	Nitrile	ASTM D2000
G-152	Stuffing Box	Ductile Iron	ASTM A536 ▼
G-200	Wrench Nut Cap Screw	316 Stainless Steel	ASTM F593
G-201	Stuffing Box with dirt seal	Nitrile	ASTM D2000
G-203	Stem	Bronze	ASTM B138
G-205	Stem Nut	Bronze	ASTM B584
G-206	Guide Cap Bearings	Acetal	-
G-208	Anti-friction Washers (2)	Acetal	-
G-209	Wedge/Rubber Encapsulated	Ductile Iron**	ASTM A536 ▼
G-210	Bonnet	Ductile Iron	ASTM A536 ▼
G-211	Bonnet O-ring	Nitrile	ASTM D2000
G-212	Body	Ductile Iron	ASTM A536 ▼



Dimensions

Dimension*	Size				
	4"	6"	8"	10"	12"
A	14.19	18.00	21.50	25.50	28.62
R	9.00	11.00	13.50	16.00	19.00
FF	9.50	11.06	12.09	13.94	14.50
E	12.00	12.00	12.00	12.00	12.00
UU (bolt circle for FL)	7.50	9.50	11.75	14.25	17.00
Q (bore)	4.30	6.30	8.30	10.30	12.30
OO (bolt circle for MJ)	7.50	9.50	11.75	14.00	16.25
N	9.12	11.12	13.37	15.62	17.88
L	2.50	2.50	2.50	2.50	2.50
B (number and size of holes for FL)	8--.75"	8--.88"	8--.88"	12--1.00"	12--1.00"
O (bolt circle diameter for MJ)	4--.88"	6--.88"	6--.88"	8--.88"	8--.88"
Turns to open	14	20.5	26.5	33	38.5
Weight (lbs.)*	120	172	271	399	529



See page B-1-18 for ordering instructions.

+ MJ accessories are included and palletized separately from valves.

*All dimensions are in inches. All weights are in approximate pounds.

**Fully encapsulated in molded rubber with no iron exposed.

▼ Material strength ASTM A536 65-45 minimum

*** Per ANSI/AWWA C111, working pressure above 250psi requires the use of a special gasket rated for the higher pressure.

FIRE PROTECTION PRODUCTS

P-2362-20 (with M.J. Accessories*)

P-2362-23 (less M.J. Accessories)

MECHANICAL JOINT ENDS
Indicator Post Style Stuffing box
2" Square Operating Nut

- 4", 6", 8", 10" and 12" sizes
- UL 262 Listed and FM 1120/1130 Approved and certified to ANSI/NSF 61 & 372
- Iron body with Mueller® PRO-GARD® Fusion Bonded Epoxy Coated interior and exterior surfaces
- Non-rising bronze stem
- Rubber encapsulated iron wedge
- Mechanical joint ends comply with ANSI/AWWA C111
- 250psig (1725 kPa/17 barg) maximum working pressure, 500psig (3450 kPa/35 bar) static test
- Triple O-ring seal (2 above the thrust collar and 1 below)
- Epoxy coating meets or exceeds all applicable requirements ANSI/AWWA C550
- Meets or exceeds all applicable requirements of ANSI/AWWA C515

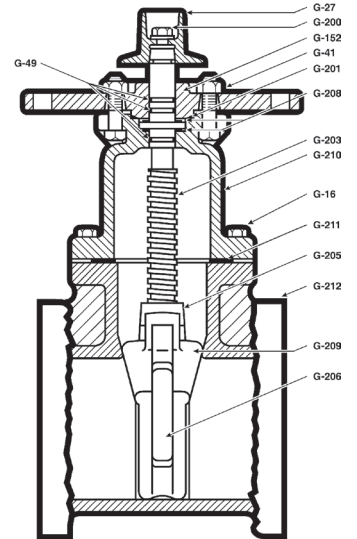
Options

- Stainless steel stem: Type 304 and Type 316
- Low zinc, silicon bronze ASTM B98-C66100/H02 stem
- EPDM disc and o-rings



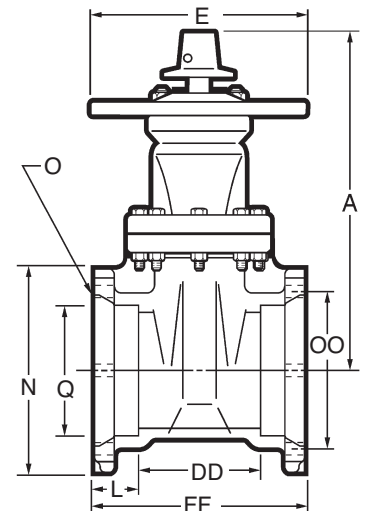
Parts List

Catalog Part Number	Description	Material	Material Standard
G-16	Bonnet Bolts & Nuts	316 Stainless Steel	ASTM F593 (bolt)/ ASTM F594 (nut)
G-27	Wrench Nut	Ductile Iron	ASTM A536 ▼
G-41	Stuffing Box Bolts & Nuts	316 Stainless Steel	ASTM F593 (bolt)/ ASTM F594 (nut)
G-49	Stem O-rings (3)	Nitrile	ASTM D2000
G-152	Stuffing Box	Ductile Iron	ASTM A536 ▼
G-200	Wrench Nut Cap Screw	316 Stainless Steel	ASTM F593
G-201	Stuffing Box with dirt seal	Nitrile	ASTM D2000
G-203	Stem	Bronze	ASTM B138
G-205	Stem Nut	Bronze	ASTM B584
G-206	Guide Cap Bearings	Acetal	-
G-208	Anti-friction Washers (2)	Acetal	-
G-209	Wedge, Rubber Encapsulated	Ductile Iron**	ASTM A536 ▼
G-210	Bonnet	Ductile Iron	ASTM A536 ▼
G-211	Bonnet O-ring	Nitrile	ASTM D2000
G-212	Body	Ductile Iron	ASTM A536 ▼



Dimensions

Dimension*	Size				
	4"	6"	8"	10"	12"
A	14.19	18.00	21.50	25.50	28.62
FF	10.00	11.60	12.68	14.88	15.0
E	12.00	12.00	12.00	12.00	12.00
Q (bore)	4.30	6.30	8.30	10.30	12.30
OO	7.50	9.50	11.75	14.00	16.25
N	9.12	11.12	13.37	15.62	17.88
L	2.50	2.50	2.50	2.50	2.50
DD	5.00	6.6	7.68	9.88	10
O (number and size of holes)	4--.88"	6--.88"	6--.88"	8--.88"	8--.88"
Turns to open	14	20.5	26.5	33	38.5
Weight (lbs.)*	115	174	266	396	520



See page B-1-18 for ordering instructions.

+MJ accessories are included and palletized separately from valves.

*All dimensions are in inches. All weights are in approximate pounds.

**Fully encapsulated in molded rubber with no iron exposed.

▼ Material strength ASTM A536 65-45 minimum

**O.S.&Y. RESILIENT WEDGE GATE
VALVES FLANGED ENDS**



R-2361-6 O.S.&Y. resilient wedge gate valve with flanged ends

- 2", 2-1/2", & 3" sizes
- UL 262 Listed and FM 1120/1130 Approved and certified to ANSI/NSF 61 & 372
- Iron body with Mueller® PRO-GARD® Fusion Bonded Epoxy Coated interior and exterior surfaces
- Outside Screw & Yoke (O.S.&Y.)
- Rubber encapsulated iron wedge
- Adjustable packing
- Handwheel – open left or open right
- 350psig (2400 kPa/24 barg) maximum working pressure - 700psig (4800 kPa/48 barg) static test
- Epoxy coating meets or exceeds all applicable requirements ANSI/AWWA C550
- Flanged end drilling complies with ASME/ANSI B16.1 class 125 and B16.42 class 150
- Meets or exceeds all applicable requirements of ANSI/AWWA C509 & C515

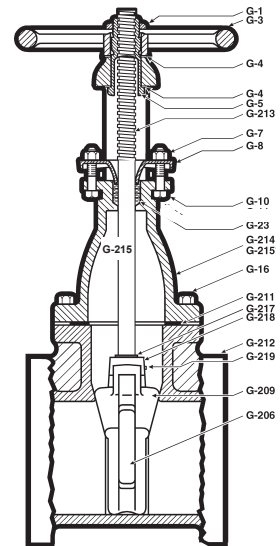


Options

- Stainless steel stem: Type 304 and Type 316
- Low zinc, silicon bronze ASTM B98-C66100/H02 stem
- EPDM disc and o-rings

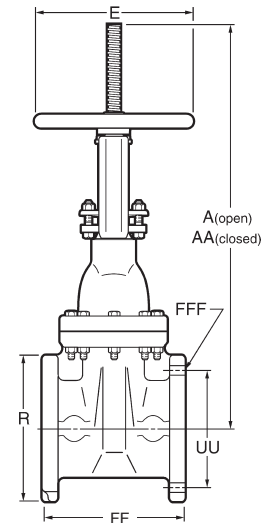
Parts List

Catalog Part Number	Description	Material	Material Standard
G-1	Cap Nut	Bronze	ASTM B62/B584
G-3	Hand Wheel	Ductile Iron	ASTM A536 ▼
G-4	Washer	Brass	-
G-5	Bush Nut	Bronze	ASTM B562
G-7	Gland Nut	Bronze	ASTM B98
G-8	Packing Gland	Ductile Iron	ASTM A536 ▼
G-10	Gland Bolt	316 Stainless Steel	ASTM F593
G-16	Bonnet Bolts & Nuts	316 Stainless Steel	ASTM F593 (bolt) / ASTM F594 (nut)
G-23	Stem Packing	Lubricated Flax	-
G-206	Guide Cap Bearings	Acetal	-
G-209	Wedge, Rubber Encapsulated	Ductile Iron**	ASTM A536 ▼
G-211	Bonnet Gasket	EPDM	ASTM D2000
G-212	Body	Ductile Iron	ASTM A536 ▼
G-213	Stem	Bronze	ASTM B138
G-215	Bonnet & Yoke	Ductile Iron	ASTM A536 ▼
G-217	O-ring	Nitrile	ASTM D2000
G-218	Disc Nut	Bronze	ASTM B584
G-219	Stem Nut Pin	Stainless Steel	Type 304



Dimensions

Dimension*	Size		
	2"	2-1/2"	3"
A	16.69"	20.33"	20.16"
AA	14.09"	16.53"	16.32"
E	7.00"	7.00"	7.00"
R	6.00"	7.00"	7.50"
FF	7.00"	7.50"	8.00"
UU	4.75"	5.50"	6.00"
FFF (number and size of holes)	4-0.625"	4--.75"	4--.75"
Turns to open	8.50"	11	11
Weight (lbs.)*	41	50	52



See page B-1-18 for ordering instructions.

NOTE: Flanged end dimensions and drilling comply with ANSI B16.1, class 125.

*All dimensions are in inches. All weights are in pounds and are approximate.

**Fully encapsulated in molded rubber with no iron exposed.

▼ Material strength ASTM A536 65-45 minimum

FIRE PROTECTION PRODUCTS

R-2361-6 O.S.&Y. resilient wedge gate valve with flanged ends

- 4", 6", 8", 10", 12" sizes
- UL 262 Listed and FM 1120/1130 Approved and certified to ANSI/NSF 61 & 372
- Iron body with Mueller® PRO-GARD® Fusion Bonded Epoxy Coated interior and exterior surfaces
- Outside Screw & Yoke (O.S.&Y.)
- Adjustable packing
- Rubber encapsulated iron wedge
- Handwheel – open left or open right
- 4"-12" - 350psig (2400 kPa/24 barg) maximum working pressure - 700psig (4800 kPa/48 barg) static test
- Epoxy coating meets or exceeds all applicable requirements ANSI/AWWA C550
- Flanged end drilling complies with ASME/ANSI B16.1 class 125 and B16.42 class 150***
- Meets or exceeds all applicable requirements of ANSI/AWWA C515

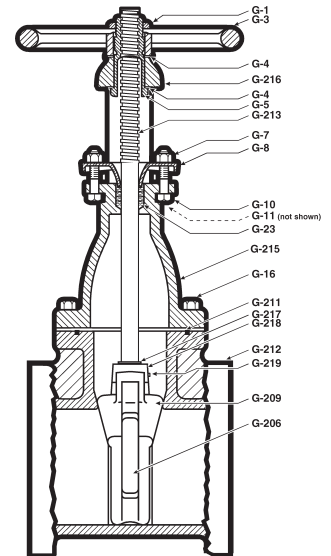


Options

- Stainless steel stems: Type 304, 316, or 431
- ASTM B98-C66100/H02 stem
- PN10/PN16 drilling
- EPDM disc and o-rings

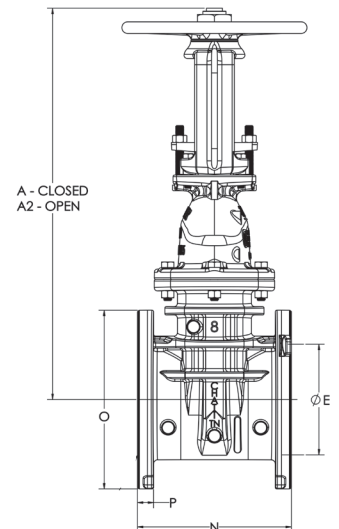
Parts List

Catalog Part Number	Description	Material	Material Standard
G-1	Cap Nut	Bronze	ASTM B62
G-3	Hand Wheel	Ductile iron	ASTM A536 ▼
G-4	Washer	Brass	ASTM B36
G-5	Bush Nut	Bronze	ASTM B62
G-7	Gland Nut	Bronze	ASTM B98
G-8	Packing Gland	Ductile Iron	ASTM A536 ▼
G-10	Gland Bolts	316 Stainless steel	ASTM F593
G-16	Bonnet Bolts and Nuts	316 Stainless steel	ASTM F593 (bolt) / F594 (nut)
G-23	Stem Packing	Lubricated Flex	-
G-206	Guide Cap Bearings	Acetal	-
G-209	Wedge/Rubber Encapsulated	Ductile Iron**	ASTM A536 ▼
G-211	Bonnet O-ring	Nitrile	ASTM D2000
G-212	Body	Ductile Iron	ASTM A536 ▼
G-213	Stem	Bronze	ASTM B138
G-215†	Bonnet	Ductile Iron	ASTM A536 ▼
G-216†	Yoke	Cast Iron	ASTM A536 ▼
G-217	O-ring	Nitrile	ASTM D2000
G-218	Disc Nut	Bronze	ASTM B584
G-219	Stem Nut Pin	Stainless Steel	Type 304



Dimensions

Dimension*	Size				
	4"	6"	8"	10"	12"
A2	23.63"	30.00"	37.37"	47.00"	53.50"
A	18.94"	23.22"	28.60"	35.75"	40.50"
E	4.30	6.30	8.30	10.30	12.30
O	9.00"	11.00"	13.50"	16.00"	19.00"
N	9.00"	10.50"	11.50"	13.00"	14.00"
UU (Bolt circle)	7.50"	9.50"	11.75"	14.25"	17.00"
FFF (number and size of holes)	8--.75"	8--.88"	8--.88"	12--1.00"	12--1.00"
Turns to open	14	20.5	26.5	33	38.5
Weight (lbs.)*	96	150	230	348	477



See page B-1-18 for ordering instructions.

*All dimensions are in inches. All weights are in pounds and are approximate.

**Fully encapsulated in molded rubber with no iron exposed.

†Two-piece bonnet & yoke.

▼ Material strength ASTM A536 65-45 minimum

*** Per ANSI/AWWA C111, working pressure above 250psi requires the use of a special gasket rated for the higher pressure.

SECTION
B-1

**O.S.&Y. RESILIENT WEDGE GATE
VALVES FLANGED ENDS**



UL / FM

FIRE PROTECTION PRODUCTS

Rev. 12-17

Shaded area indicates change

R-2361-6 O.S.&Y. resilient wedge gate valve with flanged ends

- 14", 16", 18", 20" & 24" sizes
- UL 262 Listed, FM 1120/1130 Approved, and certified to ANSI/NSF 61 & 372
- Iron body with Mueller® PRO-GARD® Fusion Bonded Epoxy Coated interior and exterior surfaces
- Outside Screw & Yoke (O.S.&Y.)
- EPDM encapsulated DI wedge
- Adjustable packing
- Handwheel – open left or open right
- 14"-16" - 250psig (1725/17 barg) maximum working pressure - 500psig (3450 kPa/35 barg) static test
- 18"-24" - UL Listed 175psig (1200 kPa/12 barg) maximum working pressure; FM Approved 250psig (1725 kPa/17 barg) - 500psig (3450 kPa/35 barg) static test
- Epoxy coating meets or exceeds all applicable requirements ANSI/AWWA C550
- Flanged end drilling complies with ASME/ANSI B16.1 class 125 and B16.42 class 150
- Meets or exceeds all applicable requirements of ANSI/AWWA C515

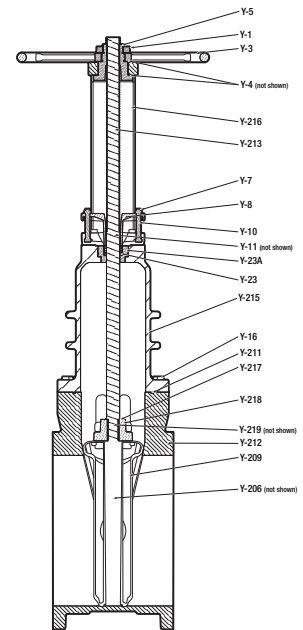


Options

- Stainless steel stem: Type 304, 316, or 431
- EPDM disc and o-rings (14"-16 option and 18"-24" standard)
- Low zinc, silicon bronze ASTM B98-C66100/H02 stem

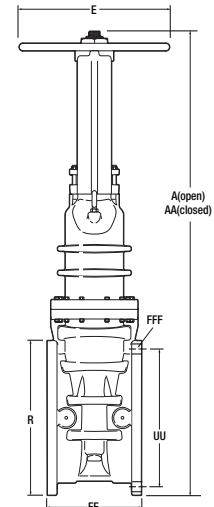
Parts List

Catalog Part Number	Description	Material	Material Standard
Y-1	Cap Nut	Bronze	ASTM B62
Y-3	Hand Wheel	Ductile Iron	ASTM A536
Y-4	Washer	Brass	ASTM B36
Y-5	Bush Nut	Bronze	ASTM B584
Y-7	Gland Nuts	Silicon	ASTM B98
Y-8	Packing Gland	Ductile Iron	ASTM A536 ▼
Y-10	Gland Bolts	316 Stainless steel	ASTM F593
Y-11	Yoke Bolts and Nuts	316 Stainless steel	ASTM F593 (bolt) / ASTM F594 (nut)
Y-16	Bonnet Bolts and Nuts	316 Stainless steel	ASTM F593 (bolt) / ASTM F594 (nut)
Y-23	Stem Packing	Lubricated Flax	-
Y-206	Guide Cap Bearings	Acetal	-
Y-209	Wedge/Rubber Encapsulated	Ductile Iron**	ASTM A536 ▼
Y-211	Bonnet O-ring	EPDM	ASTM D2000
Y-212	Body	Ductile Iron	ASTM A536
Y-213	Stem	Bronze	ASTM B138
Y-215†	Bonnet	Ductile Iron	ASTM A536 ▼
Y-216†	Yoke	Ductile Iron	ASTM A536 ▼
Y-217	O-ring	EPDM	ASTM D2000
Y-218	Disc Nut	Bronze	ASTM B62
Y-219	Stem Nut Pin	Stainless Steel	Type 304
Y-23A	Bonnet Bushing	Bronze	ASTM B62
Y-230	Eye Bolts and Nuts	Steel	Forged ASTM A563



Dimensions

Dimension*	Size				
	14"	16"	18"	20"	24"
A	64.09	71.19	85.68	93.50	104.40
AA	49.13	54.63	65.88	71.50	79.89
E	18.00	18.00	32.00	32.00	32.00
R	21.00	23.50	25.00	27.50	32.00
FF	15.06	16.06	17.00	18.00	20.00
UU	18.75	21.25	22.75	25.00	29.50
FFF (number and size of holes)	12--1.12"	16--1.12"	16--1.25"	20--1.25"	20--1.38"
Turns to open	43.5	49	57	63	75
Weight (lbs.)*	775	984	1657	2239	2899



See page B-1-18 for ordering instructions.

*All dimensions are in inches. All weights are in pounds and are approximate.

**Fully encapsulated in molded rubber with no iron exposed.

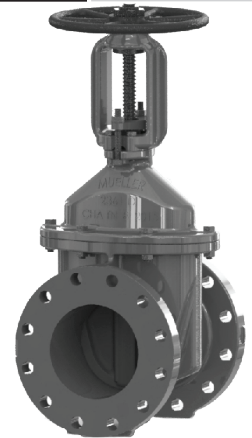
†Two-piece bonnet & yoke.

▼ Material strength ASTM A536 65-45 minimum

FIRE PROTECTION PRODUCTS

R-2361-12 O.S.&Y. resilient wedge gate valve with class 250 flanged ends

- 3", 4", 6", 8", 10", 12" sizes
- UL 262 Listed and FM 1120/1130 Approved and certified to ANSI/NSF 61 & 372
- Iron body with Mueller® PRO-GARD® Fusion Bonded Epoxy Coated interior and exterior surfaces
- Outside Screw & Yoke (O.S.&Y.)
- Adjustable packing
- Rubber encapsulated iron wedge
- Handwheel – open left or open right
- 4"-12" - 350psig (2400 kPa/24 barg) maximum working pressure - 700psig (4800 kPa/48 barg) static test
- Epoxy coating meets or exceeds all applicable requirements ANSI/AWWA C550
- Flanged end drilling complies with ASME/ANSI B16.1 class 250
- Meets or exceeds all applicable requirements of ANSI/AWWA C515

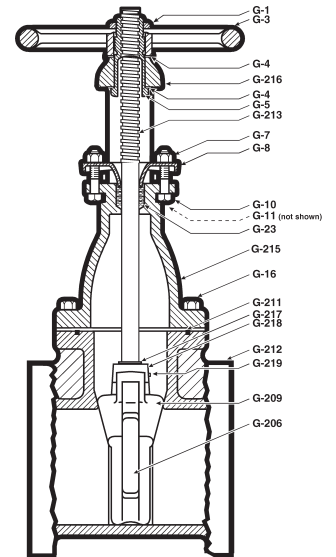


Options

- Stainless steel stems: Type 304, 316, or 431
- ASTM B98-C66100/H02 stem
- PN10/PN16 drilling
- EPDM disc and o-rings

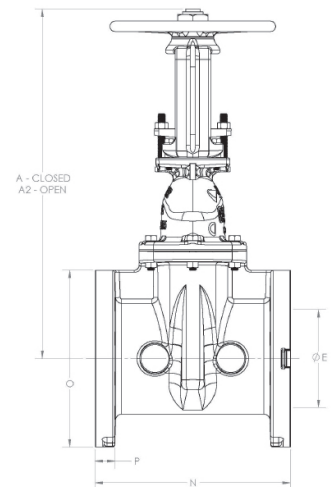
Parts List

Catalog Part Number	Description	Material	Material Standard
G-1	Cap Nut	Bronze	ASTM B62
G-3	Hand Wheel	Ductile iron	ASTM A536 ▼
G-4	Washer	Brass	ASTM B36
G-5	Bush Nut	Bronze	ASTM B62
G-7	Gland Nut	Bronze	ASTM B98
G-8	Packing Gland	Ductile Iron	ASTM A536 ▼
G-10	Gland Bolts	316 Stainless steel	ASTM F593
G-16	Bonnet Bolts and Nuts	316 Stainless steel	ASTM F593 (bolt) / F594 (nut)
G-23	Stem Packing	Lubricated Flex	-
G-206	Guide Cap Bearings	Acetal	-
G-209	Wedge/Rubber Encapsulated	Ductile Iron**	ASTM A536 ▼
G-211	Bonnet O-ring	Nitrile	ASTM D2000
G-212	Body	Ductile Iron	ASTM A536 ▼
G-213	Stem	Bronze	ASTM B138
G-215†	Bonnet	Ductile Iron	ASTM A536 ▼
G-216†	Yoke	Cast Iron	ASTM A536 ▼
G-217	O-ring	Nitrile	ASTM D2000
G-218	Disc Nut	Bronze	ASTM B584
G-219	Stem Nut Pin	Stainless Steel	Type 304



Dimensions

Dimension*	Size					
	3"	4"	6"	8"	10"	12"
A2	19.31	23.63	31.38	38.50	47.00	53.50
A	15.66	19.00	24.50	29.50	35.75	40.50
Ø E	3.30	4.30	6.30	8.30	10.30	12.30
O	9.00	10.00	12.50	15.00	17.50	20.50
N	11.10	12.00	15.86	16.50	18.00	19.75
P	1.13	1.25	1.44	1.63	1.87	2.00
UU (Bolt circle)	6.63	7.87	10.63	12.99	15.24	17.76
FFF (number and size of holes)	8--.88	8--.88	12--.88	12--1.1125	16--1.25	16--1.25
Turns to open	11	14	20.5	26.5	33	38.5
Weight (lbs.)*	75	121	198	308	475	629



See page B-1-18 for ordering instructions.

*All dimensions are in inches. All weights are in pounds and are approximate.

**Fully encapsulated in molded rubber with no iron exposed.

†Two-piece bonnet & yoke.

▼ Material strength ASTM A536 65-45 minimum

*** Per ANSI/AWWA C111, working pressure above 250psi requires the use of a special gasket rated for the higher pressure.

**GATE VALVE ORDERING
INSTRUCTIONS**



When ordering Mueller® Gate Valves, specify the following:

1. Quantity If more than one size, quantity of each
2. Size of valve Shown on Page B-1-5 through B-1-15
3. Catalog number Shown on Pages B-1-5 through B-1-15
4. Direction of opening Usually left (counter-clockwise).

Where previous valves open right (clockwise, new valves should open in same direction (Wrench nuts on valves that open to the right are painted red for identification.

5. Method operation 2" square wrench nut or handwheel is available.

When ordering parts for Mueller Gate Valves, Specify the following:

1. Quantity
2. Size of Valve
3. Part Name and Number - when ordering valve body, specify type of ends desired
4. Valve catalog number
5. Direction of opening
6. Year date of valve