

RICE LAKE

On-site OS-10/OS-25/OS-45

On-site Suspended Scale

HANGING



Standard Features

- Hold function
- Units of measure: kg/lb/lb-oz
- Adjustable automatic shutoff
- Ergonomic handheld design
- Battery operated, two AA batteries included
- Carrying case and top s-hook included
- Limited one-year warranty

Part Number/Price

Part #	Model	Capacity	Est. Weight	Price
130292	OS-10	10 kg x 0.01 kg (22 lb x 0.02 lb) (22 lb x 1/4 oz)	1.25 lb	\$78.00
130293	OS-25	25 kg x 0.02 kg (55 lb x 0.05 lb) (55 lb x 1/2 oz)	1.25 lb	\$78.00
130294	OS-45	45 kg x 0.05 kg (99 lb x 0.1 lb) (99 lb x 1 oz)	1.25 lb	\$78.00



www.ricelake.com | Phone: 800-472-6703

RICE LAKE

Hardware and Accessories

TABLE OF CONTENTS

LOAD CELL MOUNTING HARDWARE SAFETY GUIDELINES	460	ROUGHDECK® SCALE BASE	479	INDUSTRIAL CORROSION INHIBITOR	495
MOUNTING ASSEMBLY COMPONENT IDENTIFICATION	461	COMPLETE CUSTOM CABLE SERVICES	480	CRIMPER AND LEAD SEALS	495
JAM NUTS	461	EL147RP PLUS	481	DESICCANTS	495
EYE NUTS	462	<i>Rodent Protection Cables</i>		STATIC CONTROL TABLE MAT AND FLOOR MAT	496
COUPLING NUTS	462	HOSTILE ENVIRONMENT LOAD CELL CABLE	482	STATIC CONTROL WRIST STRAP	496
CLEVIS MOUNT ASSEMBLIES	463	STANDARD LOAD CELL CABLE	482	STATIC SHIELDING BAGS	496
LOAD CELL EYE BOLTS	464	EL147IS HAZARDOUS ENVIRONMENT BLUE JACKET CABLE	483	STATIC-SAFE SERVICE KIT	497
ROD END BALL JOINTS	465	EL144 COMMUNICATIONS CABLE	483	PORTABLE MEGOMETER	497
CONNECTING LINKS	466	BCD CABLE	483	RICE LAKE'S SCALE TECHNICIAN KITS	498
LOAD CELL ISOLATORS	466	FIBER OPTIC CABLE	484		
THREADED ADAPTORS	467	SURVIVOR® EL620HE HIGH TEMPERATURE CABLE	484		
ITCM - ISOLATED TENSION CELL MOUNT HARDWARE KITS	468	SURVIVOR® CABLE ARMOR	484		
GROUNDING STRAP	469	EL148HE REPLACEMENT METTLER TOLEDO® POWER CELL® CABLE	485		
LOAD RECEIVER PLATE	469	LOAD CELL CONDUIT ADAPTORS	485		
BALL BEARINGS	470	CORD GRIP ASSEMBLIES	485		
LOAD CUPS	470	EL214 CABLE SPLICING KIT	486		
CARDINAL® WIRE ROPE REPLACEMENT ASSEMBLIES	471	EL214T CABLE SPLICING KIT	486		
WIRE ROPE ASSEMBLIES	471	EL215 CABLE SPLICING KIT	486		
CUSTOM WIRE ROPES	471	FLINTEC™ LOAD CELL CABLE REPLACEMENT KITS	487		
CUSTOM WIRE ROPE DEFINITION FORM	472	FIVE-POSITION CONNECTORS, SHELL PLUGS, RECEPTACLES	488		
SPHERICAL WASHER SETS	473	SEVEN-POSITION CONNECTORS, SHELL PLUGS, RECEPTACLES	488		
WELDLESS END LINKS	473	SIX-POSITION CONNECTORS, SHELL PLUGS, RECEPTACLES	488		
LOAD CELL SPACERS	474	T-STRIP MOLDING	489		
LOAD BUTTON	474	T-GRIP MOLDING	489		
LOAD BUTTON INSERT KIT	474	ELECTRONIC SCALE TICKETS	490		
FLINTEC™ ADJUSTABLE RUBBER FOOT	475	<i>Hecon® Printers, EL522 & EL516 - 20266</i>			
SUREFOOT™	475	<i>Rice Lake Scales - 71630 or 105182</i>			
BENCH SCALE FEET	476	<i>SP2200, SP2000, RL250 & EL500 - 20265</i>			
POLYURETHANE RUBBER LEVELING	476	<i>Blank Scale Ticket - 22263</i>			
CAPTURED BALL FLOOR SCALE LEVELING FEET	477	<i>Fairbanks™ Scales - 20260</i>			
LEVELING PADS	478	<i>Create Your Own Custom Ticket</i>			
LEVELING MOUNT	478	<i>Howe™ Scales - 20261</i>			
LEVELING PAD STEMS	478	MECHANICAL SCALE TICKETS	491		
SUMMIT® 3000 SCALE BASE	479	DUST COVERS	492		
FLOOR SCALE BASE	479	CABLES	493		
		STATIC BRUSHES	494		
		IONIZING STRIPS	494		
		IONIZING STRIPS ACCESSORIES	494		

ESPAÑOL | Visit ricelake.com/spanish to see all Rice Lake materials available in Spanish

The following product names, logos, brands, and other trademarks featured or referred to within this publication are the property of their respective trademark holders.

Load Cell Mounting Hardware Safety Guidelines

Install only load cell mounting hardware and assemblies that have been specifically designed for use in tank, hopper or hanging scale applications. Often, the use of an inferior-grade product results in component failure which risks equipment damage and personal injury. These simple suggestions are provided to help minimize your exposure to vessel scale installation hazards.

1. Estimating Gross Load

To select the correct load cell or load cell hardware for a given application, it is necessary to know the total weight on the scale—including the net weight of product, the tare weight of the vessel and the weight of the platform, tank or hopper, as appropriate.

2. Safe Load

Do not exceed the safe load figures listed in Rice Lake Weighing Systems' catalog for any load cell hardware. Where shock loads are present, it may be necessary to derate these safe load figures depending on the severity of the shock load.

3. Load Distribution

In multiple load cell applications, the weight must be evenly distributed between all cells.

4. Threaded Connections

Check that all threads of a threaded connection are in engagement. For example, an eye bolt screwed into an s-type load cell should protrude slightly on the opposite side.

5. Jam Nuts

All threaded connections must be locked with jam nuts against inadvertent disassembly. If a load is suspended from a single load cell, it is critical that the load cannot rotate as this may loosen the jam nut.

6. Wire Rope Assemblies

With wire rope assemblies, do not twist the rope during assembly or disassembly. For example, do not remove a frozen nut from one end of a rope assembly by holding the opposite end.

7. Attachment Points of a Load Cell Hardware Assembly

The attachment points of a load cell hardware assembly must be aligned properly and the assembly should be essentially vertical.

8. Swaying in a Suspended Vessel Scale

If there is excessive swaying in a suspended vessel scale, apply horizontal bracing to reduce the amplitude.

9. Safety Backup

If failure of one or more load cell hardware assemblies could cause injury or damage, a safety backup (safety chains, safety rods, etc.) must be used. The assemblies should be inspected routinely for damage, excessive wear or corrosion and replaced if necessary.

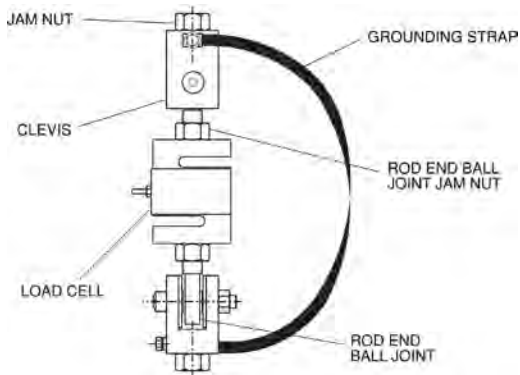
10. Hopper Scales: Guarding Against Contamination

With hopper scales, guard against contamination of the product being weighed in case of failure of the load cell or hardware assembly. For example, do not locate a wire rope assembly over a hopper scale where broken strands of wire could fall into the weighing vessel, contaminating the product being weighed.

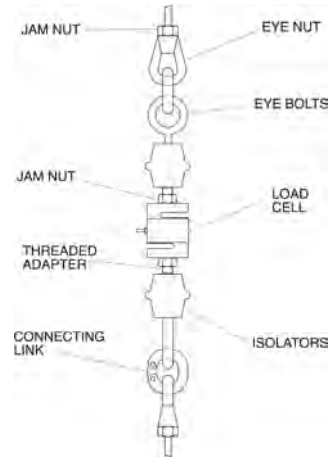
11. Selecting Steel Rod or Any Other Weight-Bearing Components

Select steel rod or any other weight-bearing components so that the minimum tensile strength is at least four times the total weight carried by that component. Note that threaded rod is generally made from a low tensile-strength mild steel which should be checked for tensile strength before use in any suspended vessel scale.

Mounting Assembly Component Identification



ITCM Isolated Tension Cell Mounting Assembly



Conventional Tension Mounting Assembly

Our popular Isolated Tension Cell Mounting (ITCM) assembly and other conventional suspended weighing system assemblies employ a variety of serviceable hardware components. Rice Lake Weighing Systems offers a comprehensive selection of these items for all of your suspended vessel service needs. These drawings are designed to enable you to quickly identify and differentiate components from both of these common designs. All corresponding replacement hardware is located on the following pages.

Jam Nuts



Standard Features

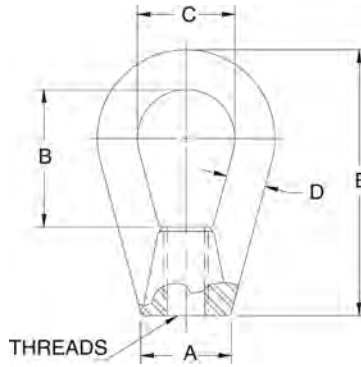
- Mild steel/stainless steel
- Coarse or fine thread
- Zinc-plated mild steel or stainless steel

Important: Read "Load Cell Mounting Hardware Safety Guidelines" at the beginning of this section.

Thread Size	Part#	Price
Mild Steel, Fine Thread		
1/4-28 UNF	14639	\$0.35
3/8-24 UNF	14651	\$0.35
1/2-20 UNF	14664	\$1.40
3/4-16 UNF	14687	\$1.40
1-12 UNF	14702	\$5.45
1-14 UNF	14703	\$4.45
1 1/4-12 UNF	14708	\$3.25
1 1/2-12 UNF	14711	\$4.50
Mild Steel, Coarse Thread		
1/4-20 UNC	14636	\$0.35
3/8-16 UNC	14649	\$1.90
1/2-13 UNC	14661	\$0.35
5/8-11 UNC	14676	\$1.90
3/4-10 UNC	14686	\$0.85
1-8 UNC	14701	\$1.00
1-1/4-7 UNC	14707	\$2.90

Thread Size	Part#	Price
Stainless Steel, Fine Thread		
1/4-28 UNF	14640	\$1.10
1/2-20 UNF	14665	\$1.65
3/4-16 UNF	14688	\$2.10
Stainless Steel, Coarse Thread		
3/8-16 UNC	14653	\$1.85
1/2-13 UNC	14662	\$1.60
5/8-11 UNC	14680	\$1.85
3/4-10 UNC	14690	\$1.90

Eye Nuts



Standard Features

- Drop-forged steel, tapped NC right-hand threads

Part Number/Price

Part #	A	B	C	D	E	Thread Size	Safe Load*	Price					
17772	0.50 in	12.7 mm	1.06 in	26.9 mm	0.75 in	19.1 mm	0.25 in	6.4 mm	1.68 in	42.7 mm	1/4-20UNC	500 lb (226.8 kg)	\$40.00
17773	0.75 in	19.1 mm	1.18 in	30.0 mm	0.87 in	22.1 mm	0.31 in	7.9 mm	2.25 in	57.2 mm	3/8-16UNC	1,800 lb (816.5 kg)	\$25.00
17774	1.00 in	25.4 mm	1.56 in	39.6 mm	1.12 in	28.5 mm	0.43 in	10.9 mm	3.00 in	76.2 mm	1/2-13UNC	3,600 lb(1,632.9 kg)	\$40.00
17775	1.25 in	31.8 mm	1.93 in	49.0 mm	1.37 in	34.8 mm	0.56 in	14.2 mm	3.75 in	95.3 mm	5/8-11 UNC	5,800 lb (2,630.8 kg)	\$45.00

*Do not exceed the safe load

Coupling Nuts



Standard Features

- Heavy hex

Part Number/Price

Part #	Thread Size	Length	Flat	Safe Load*	Price		
14638	1/4-20 UNC	1.75 in	44.5 mm	0.44 in	11.2 mm	500 lb (226.8 kg)	\$6.25
14650	3/8-16 UNC	1.75 in	44.5 mm	0.62 in	15.8 mm	1,500 lb (680.4 kg)	\$6.75
14663	1/2-13 UNC	1.75 in	44.5 mm	0.87 in	22.1 mm	3,000 lb (1,360.8 kg)	\$6.75
14681	5/8-11 UNC	2.12 in	53.8 mm	1.06 in	26.9 mm	7,500 lb (3,402.0 kg)	\$9.50
14691	3/4-10 UNC	2.25 in	57.1 mm	1.25 in	31.8 mm	10,000 lb (4,535.9 kg)	\$10.50

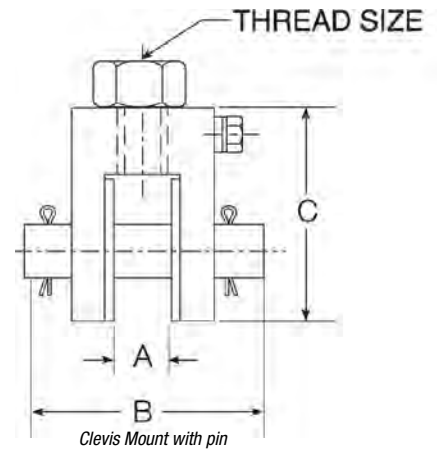
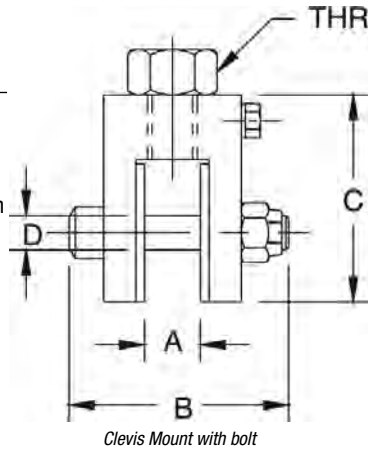
*Do not exceed the safe load

Important: Read "Load Cell Mounting Hardware Safety Guidelines" at the beginning of this section.

Clevis Mount Assemblies

Standard Features

- Mild steel
- Assembly used in the ITCM
- Adapts rod to rod-end ball joint
- Provides electrical isolation for load cell protection
- Elimination of unwanted side loads
- Optional stainless steel provides enhanced corrosion resistance

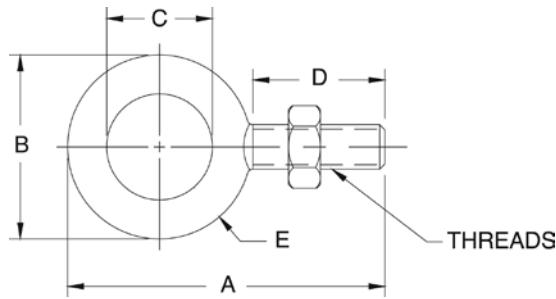


Part Number/Price

Part #	A	B	C	D	Thread Size	Safe Load*	Price				
Mild Steel with Bolt											
17792	0.52 in	13.2 mm	2.38 in	60.5 mm	1.94 in	49.3 mm	0.38 in	9.5 mm	3/8-16 UNC	300 lb (136.1 kg)	\$75.00
17793	0.52 in	13.2 mm	2.38 in	60.5 mm	1.94 in	49.3 mm	0.38 in	9.5 mm	1/2-13 UNC	300 lb (136.1 kg)	\$75.00
17783	0.39 in	9.9 mm	1.81 in	46.0 mm	1.69 in	42.9 mm	0.25 in	6.4 mm	1/2-13 UNC	500 lb (226.8 kg)	\$85.00
17784	0.65 in	16.5 mm	2.68 in	68.1 mm	2.31 in	58.7 mm	0.50 in	12.7 mm	3/4-10 UNC	4,000 lb (1,814.4 kg)	\$85.00
17785	0.78 in	19.8 mm	3.37 in	85.6 mm	3.00 in	76.2 mm	0.62 in	15.8 mm	1-8 UNC	10,000 lb (4,535.9 kg)	\$85.00
17786	0.39 in	9.9 mm	1.81 in	46.0 mm	1.69 in	42.9 mm	0.25 in	6.4 mm	3/8-16 UNC	500 lb (226.8 kg)	\$85.00
17787	0.65 in	16.5 mm	2.68 in	68.1 mm	2.31 in	58.7 mm	0.50 in	12.7 mm	1/2-13 UNC	2,000 lb (907.2 kg)	\$85.00
17788	0.65 in	16.5 mm	2.68 in	68.1 mm	2.31 in	58.7 mm	0.50 in	12.7 mm	5/8-11 UNC	2,500 lb (1,134.0 kg)	\$85.00
17789	0.78 in	19.8 mm	3.37 in	85.6 mm	3.00 in	76.2 mm	0.62 in	15.8 mm	3/4-10 UNC	5,000 lb (2,268.0 kg)	\$85.00
Mild Steel with Pin											
17790	1.39 in	35.3 mm	4.12 in	104.6 mm	4.50 in	114.3 mm	1.00 in	25.4 mm	1 1/4-7 UNC	15,000 lb (6,803.9 kg)	\$315.00
17791	1.22 in	31.0 mm	4.12 in	104.6 mm	5.00 in	127.0 mm	1.25 in	31.8 mm	1 1/2-6 UNC	20,000 lb (9,071.9 kg)	\$315.00
Stainless Steel with Pin											
33644	0.52 in	13.2 mm	2.38 in	60.5 mm	1.94 in	49.3 mm	0.38 in	9.5 mm	1/2-13 UNC	300 lb (136.1 kg)	\$165.00
33643	0.39 in	9.9 mm	1.81 in	46.0 mm	1.69 in	42.9 mm	0.25 in	6.4 mm	1/2-13 UNC	500 lb (226.8 kg)	\$165.00
33641	0.39 in	9.9 mm	1.81 in	46.0 mm	1.69 in	42.9 mm	0.25 in	6.4 mm	3/8-16 UNC	500 lb (226.8 kg)	\$165.00
33658	0.52 in	13.2 mm	2.38 in	60.5 mm	1.94 in	49.3 mm	0.38 in	9.5 mm	3/8-16 UNC	500 lb (226.8 kg)	\$165.00
33642	0.65 in	16.5 mm	2.68 in	68.1 mm	2.31 in	58.7 mm	0.50 in	12.7 mm	3/4-10 UNC	4,000 lb (1,814.4 kg)	\$215.00
33640	0.65 in	16.5 mm	2.68 in	68.1 mm	2.31 in	58.7 mm	0.50 in	12.7 mm	1/2-13 UNC	2,000 lb (907.2 kg)	\$215.00
33639	0.65 in	16.5 mm	2.68 in	68.1 mm	2.31 in	58.7 mm	0.50 in	12.7 mm	5/8-11 UNC	2,500 lb (1,134.0 kg)	\$215.00
33638	0.78 in	19.8 mm	3.37 in	85.6 mm	3.00 in	76.2 mm	0.62 in	15.8 mm	3/4-10 UNC	5,000 lb (2,268.0 kg)	\$215.00

*Do not exceed the safe load

Load Cell Eye Bolts



Standard Features

- One jam nut included with each eye bolt

Part Number/Price

Part #	A		B		C		D		E		Thread Size	Safe Load*	Price
Mild Steel													
17705	2.25 in	57.2 mm	1.25 in	31.8 mm	0.75 in	19.1 mm	1.00 in	25.4 mm	0.25 in	6.4 mm	1/4-28 UNF	500 lb (226.8 kg)	\$22.00
17707	2.91 in	73.9 mm	1.66 in	42.2 mm	1.00 in	25.4 mm	1.25 in	31.8 mm	0.33 in	8.4 mm	3/8-24 UNF	1,300 lb (589.7 kg)	\$22.00
17709	3.56 in	90.4 mm	2.06 in	52.3 mm	1.19 in	30.2 mm	1.50 in	38.1 mm	0.44 in	11.2 mm	1/2-20 UNF	2,400 lb (1,088.6 kg)	\$25.00
17711	4.25 in	108.0 mm	2.50 in	63.5 mm	1.37 in	34.8 mm	1.75 in	44.5 mm	0.56 in	14.2 mm	5/8-18 UNF	4,000 lb (1,814.4 kg)	\$30.00
17713	4.81 in	122.2 mm	2.81 in	71.4 mm	1.50 in	38.1 mm	2.00 in	50.8 mm	0.66 in	16.8 mm	3/4-16 UNF	5,000 lb (2,267.9 kg)	\$65.00
17715	6.06 in	153.9 mm	3.56 in	90.4 mm	1.81 in	46.0 mm	2.50 in	63.5 mm	0.87 in	22.1 mm	1-12 UNF	9,000 lb (4,082.3 kg)	\$100.00
17716	6.06 in	153.9 mm	3.56 in	90.4 mm	1.81 in	46.0 mm	2.50 in	63.5 mm	0.87 in	22.1 mm	1-14 UNS	9,000 lb (4,082.3 kg)	\$100.00
17704	2.25 in	57.2 mm	1.25 in	31.8 mm	0.75 in	19.1 mm	1.00 in	25.4 mm	0.25 in	6.4 mm	1/4-20 UNC	500 lb (226.8 kg)	\$20.00
17706	2.91 in	73.9 mm	1.66 in	42.2 mm	1.00 in	25.4 mm	1.25 in	31.8 mm	0.33 in	8.4 mm	3/8-16 UNC	1,300 lb (589.7 kg)	\$22.00
17708	3.56 in	90.4 mm	2.06 in	52.3 mm	1.19 in	30.2 mm	1.50 in	38.1 mm	0.44 in	11.2 mm	1/2-13 UNC	2,400 lb (1,088.6 kg)	\$32.00
17710	4.25 in	108.0 mm	2.50 in	63.5 mm	1.37 in	34.8 mm	1.75 in	44.5 mm	0.56 in	14.2 mm	5/8-11 UNC	4,000 lb (1,814.4 kg)	\$53.00
17712	4.81 in	122.2 mm	2.81 in	71.4 mm	1.50 in	38.1 mm	2.00 in	50.8 mm	0.66 in	16.8 mm	3/4-10 UNC	5,000 lb (2,267.9 kg)	\$53.00
17714	6.06 in	153.9 mm	3.56 in	90.4 mm	1.81 in	46.0 mm	2.50 in	63.5 mm	0.87 in	22.1 mm	1-8 UNC	9,000 lb (4,082.3 kg)	\$54.00
17717	7.44 in	189.0 mm	4.44 in	112.8 mm	2.19 in	55.6 mm	3.00 in	76.2 mm	1.12 in	28.4 mm	1 1/4-7 UNC	15,000 lb (6,803.9 kg)	\$150.00

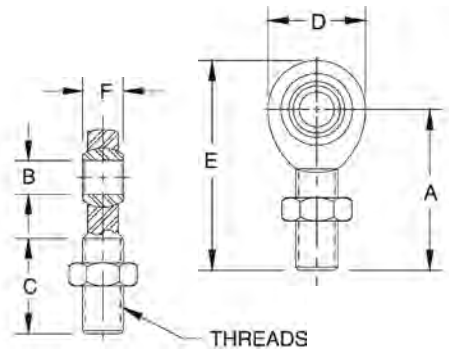
*Do not exceed the safe load

Important: Read "Load Cell Mounting Hardware Safety Guidelines" at the beginning of this section.

Rod End Ball Joints

Standard Features

- Used in the ITCM assembly
- One jam nut included with each rod end ball joint
- Standard or PTFE-lined
- Optional stainless steel provides enhanced corrosion resistance for hostile environments



PTFE Lined Standard

Part Number/Price

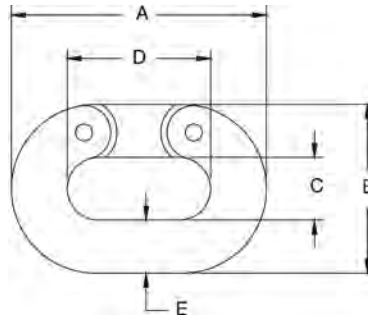
Part#	Safe Load*	Breaking Strength	PTFE Lined	Price
Mild Steel				
17746	975 lb (453.6 kg)	3,915 lb (1,913.3 kg)	YES	\$30.00
17734	1,200 lb (544.3 kg)	4,916 lb (2,229.9 kg)	NO	\$21.00
17736	4,000 lb (1,814.4 kg)	16,238 lb (7,365.5 kg)	NO	\$55.00
17738	7,000 lb (3,175.2 kg)	28,081 lb (12,737.4 kg)	NO	\$95.00
17735	2,000 lb (907.2 kg)	8,075 lb (3,662.8 kg)	NO	\$25.00
17737	3,250 lb (1,474.2 kg)	13,831 lb (6,273.7 kg)	NO	\$38.00
17739	500 lb (226.8 kg)	2,158 lb (978.9 kg)	YES	\$30.00
17740	4,000 lb (1,814.4 kg)	16,238 lb (7,365.5 kg)	YES	\$50.00
17741	10,000 lb (4,535.9 kg)	40,572 lb (18,403.2 kg)	YES	\$75.00
17742	10,500 lb (4,762.7 kg)	43,541 lb (19,749.9 kg)	NO	\$140.00
26007	15,000 lb (6,803.9 kg)	76,200 lb (34,563.8 kg)	YES	\$285.00
17747	19,000 lb (8,618.3 kg)	76,200 lb (34,563.8 kg)	YES	\$325.00
17743	20,000 lb (9,071.9 kg)	79,728 lb (36,164.1 kg)	NO	\$245.00
17744	24,000 lb (10,886.2 kg)	96,510 lb (43,776.3 kg)	NO	\$345.00
Stainless Steel				
33506	1,500 lb (680.4 kg)	7,362 lb (3,339.4 kg)	YES	\$130.00
33505	500 lb (226.8 kg)	2,158 lb (978.9 kg)	YES	\$130.00
33507	3,000 lb (1,360.8 kg)	16,238 lb (7,365.5 kg)	YES	\$140.00
33508	7,000 lb (3,175.2 kg)	40,572 lb (18,403.2 kg)	YES	\$325.00

*Do not exceed the safe load

Dimensions

Part#	A	B	C	D	E	F	Thread Size
Mild Steel							
17746	1.94 in	49.3 mm	0.37 in	9.4 mm	1.25 in	31.8 mm	1.00 in 25.4 mm 2.43 in 61.7 mm 0.50 in 12.7 mm 3/8-24 UNF
17734	1.94 in	49.3 mm	0.37 in	9.4 mm	1.25 in	31.8 mm	1.00 in 25.4 mm 2.43 in 61.7 mm 0.50 in 12.7 mm 3/8-24 UNF
17736	2.44 in	62.0 mm	0.50 in	12.7 mm	1.50 in	38.1 mm	1.31 in 33.3 mm 3.09 in 78.5 mm 0.62 in 15.8 mm 1/2-20 UNF
17738	2.87 in	72.9 mm	0.75 in	19.1 mm	1.75 in	44.5 mm	1.75 in 44.5 mm 3.75 in 95.3 mm 0.87 in 22.1 mm 3/4-16 UNF
17735	2.44 in	62.0 mm	0.50 in	12.7 mm	1.50 in	38.1 mm	1.31 in 33.3 mm 3.09 in 78.5 mm 0.62 in 15.8 mm 1/2-20 UNF
17737	2.87 in	72.9 mm	0.75 in	19.1 mm	1.75 in	44.5 mm	1.75 in 44.5 mm 3.75 in 95.3 mm 0.87 in 22.1 mm 3/4-16 UNF
17739	1.56 in	39.6 mm	0.25 in	6.4 mm	1.00 in	25.4 mm	0.75 in 19.1 mm 1.93 in 49.0 mm 0.37 in 9.4 mm 1/4-28 UNF
17740	2.44 in	62.0 mm	0.50 in	12.7 mm	1.50 in	38.1 mm	1.31 in 33.3 mm 3.09 in 78.5 mm 0.62 in 15.8 mm 1/2-20 UNF
17741	2.87 in	72.9 mm	0.62 in	15.8 mm	1.75 in	44.5 mm	1.75 in 44.5 mm 3.75 in 95.3 mm 0.75 in 19.1 mm 3/4-16 UNF
17742	4.12 in	104.7 mm	1.00 in	25.4 mm	2.12 in	53.9 mm	2.75 in 70.0 mm 5.50 in 139.7 mm 1.37 in 34.8 mm 1-12 UNF
26007	4.12 in	104.7 mm	1.00 in	25.4 mm	2.12 in	53.9 mm	2.75 in 70.0 mm 5.50 in 139.7 mm 1.37 in 34.8 mm 1-14 UNS
17747	4.12 in	104.7 mm	1.00 in	25.4 mm	2.12 in	53.9 mm	2.75 in 70.0 mm 5.50 in 139.7 mm 1.37 in 34.8 mm 1-12 UNF
17743	4.12 in	104.7 mm	1.25 in	31.8 mm	2.12 in	53.9 mm	2.75 in 70.0 mm 5.50 in 139.7 mm 1.09 in 27.7 mm 1 1/4-12 UNF
17744	5.37 in	136.4 mm	1.50 in	38.1 mm	3.00 in	76.2 mm	3.50 in 88.9 mm 7.12 in 180.8 mm 1.31 in 33.3 mm 1 1/2-12 UNF
Stainless Steel							
33506	1.94 in	49.3 mm	0.37 in	9.4 mm	1.25 in	31.8 mm	1.00 in 25.4 mm 2.43 in 61.7 mm 0.50 in 12.7 mm 3/8-24 UNF
33505	1.56 in	39.6 mm	0.25 in	6.4 mm	1.00 in	25.4 mm	0.75 in 19.1 mm 1.93 in 49.0 mm 0.37 in 9.4 mm 1/4-28 UNF
33507	2.44 in	62.0 mm	0.50 in	12.7 mm	1.50 in	38.1 mm	1.31 in 33.3 mm 3.09 in 78.5 mm 0.62 in 15.8 mm 1/2-20 UNF
33508	2.87 in	72.9 mm	0.62 in	15.8 mm	1.75 in	44.5 mm	1.75 in 44.5 mm 3.75 in 95.3 mm 0.75 in 19.1 mm 3/4-16 UNF

Connecting Links



Standard Features

- Drop-forged carbon steel, heat-treated, hot-dipped galvanized finish

Part Number/Price

Part#	A	B	C	D	E	Safe Load*	Price					
17794	1.50 in	38.1 mm	1.00 in	25.4 mm	0.43 in	10.9 mm	0.87 in	22.1 mm	0.25 in	6.4 mm	1,325 lb (601.6 kg)	\$35.00
17795	2.06 in	52.3 mm	1.37 in	34.8 mm	0.56 in	14.2 mm	1.12 in	28.5 mm	0.37 in	9.4 mm	2,750 lb (1,247.4 kg)	\$37.00
17796	2.65 in	67.3 mm	1.71 in	43.4 mm	0.65 in	16.5 mm	1.46 in	37.1 mm	0.50 in	12.7 mm	4,750 lb (2,154.6 kg)	\$37.00
17797	3.31 in	84.1 mm	2.09 in	53.1 mm	0.78 in	19.8 mm	1.81 in	46.0 mm	0.62 in	15.8 mm	7,250 lb (3,288.6 kg)	\$47.00
17798	3.87 in	98.3 mm	2.50 in	63.5 mm	0.93 in	23.6 mm	2.12 in	53.9 mm	0.75 in	19.1 mm	10,250 lb (4,649.3 kg)	\$65.00
17799	5.00 in	127.0 mm	3.31 in	84.1 mm	1.25 in	31.8 mm	2.75 in	69.9 mm	1.00 in	25.4 mm	15,500 lb (7,030.7 kg)	\$110.00

*Do not exceed the safe load

Load Cell Isolators



Standard Features

- Power surges caused by welding or electrical shorts frequently damage load cells and indicators. To prevent such damage, load cell isolators electrically separate the mechanical assembly from its tension-type load cell.

Part Number/Price

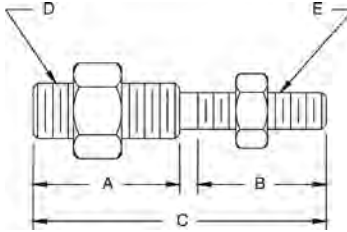
Part#	Height Thread Size	Max. Dia	Safe Load*	Price			
17722	3/8-16 UNC	2.50	63.5 mm	2.50	63.5 mm	600 lb (272.2 kg)	\$38.00
17724	1/2-13 UNC	2.50	63.5 mm	2.50	63.5 mm	600 lb (272.2 kg)	\$45.00
17726	1/2-20 UNF	2.50	63.5 mm	2.50	63.5 mm	600 lb (272.2 kg)	\$80.00
17725	1/2-13 UNC	2.43	61.7 mm	2.00	50.8 mm	3,000 lb (1,360.8 kg)	\$110.00
17723	3/8-24 UNF	2.50	63.5 mm	2.50	63.5 mm	600 lb (272.2 kg)	\$85.00
17728	1/2-13 UNC x 1/2-20 UNF	2.50	63.5 mm	2.50	63.5 mm	600 lb (272.2 kg)	\$60.00
17732	1/4-20 UNC	1.00	25.4 mm	1.12	28.4 mm	250 lb (113.4 kg)	\$45.00

*Do not exceed the safe load

Threaded Adaptors

Standard Features

- For coupling isolators with load cells and steel yard rods
- Supplied with jam nuts
- Now in stronger, more durable stainless steel



Part Number/Price

Part#	A		B		C		D	E	Safe Load*	Price
33561	—	—	—	—	2.00 in	50.8 mm	1/4-28 UNF	1/4-28 UNF	300 lb (136.1 kg)	\$25.00
33562	0.94 in	23.9 mm	0.94 in	23.9 mm	2.00 in	50.8 mm	1/4-28 UNF	1/4-20 UNC	300 lb (136.1 kg)	\$26.00
33563	0.92 in	23.3 mm	1.02 in	25.9 mm	2.06 in	52.3 mm	1/4-28 UNF	3/8-24 UNF	300 lb (136.1 kg)	\$25.00
33564	0.94 in	23.9 mm	0.94 in	23.9 mm	2.00 in	50.8 mm	1/4-28 UNF	3/8-16 UNC	300 lb (136.1 kg)	\$25.00
33565	1.06 in	26.9 mm	1.06 in	26.9 mm	2.25 in	57.2 mm	1/4-20 UNC	3/8-16 UNC	300 lb (136.1 kg)	\$27.00
33567	1.06 in	26.9 mm	1.06 in	26.9 mm	2.25 in	57.2 mm	1/4-28 UNF	1/2-13 UNC	300 lb (136.1 kg)	\$27.00
33568	—	—	—	—	2.00 in	50.8 mm	3/8-24 UNF	3/8-24 UNF	500 lb (226.8 kg)	\$36.00
33569	0.91 in	23.1 mm	0.91 in	23.1 mm	2.00 in	50.8 mm	3/8-16 UNC	3/8-24 UNF	500 lb (226.8 kg)	\$30.00
33570	1.06 in	26.9 mm	1.06 in	26.9 mm	2.25 in	57.2 mm	3/8-24 UNF	1/2-13 UNC	500 lb (226.8 kg)	\$27.00
33571	1.31 in	33.3 mm	1.31 in	33.3 mm	2.75 in	69.9 mm	1/2-13 UNC	5/8-11 UNC	3,000 lb (1,360.8 kg)	\$27.00
33572	0.87 in	22.0 mm	0.87 in	22.0 mm	2.00 in	50.8 mm	1/2-13 UNC	1/2-20 UNF	3,000 lb (1,360.8 kg)	\$30.00
33573	—	—	—	—	2.06 in	52.3 mm	1/2-20 UNF	1/2-20 UNF	3,000 lb (1,360.8 kg)	\$30.00
33574	1.31 in	33.3 mm	1.31 in	33.3 mm	2.75 in	69.9 mm	1/2-20 UNF	5/8-11 UNC	3,000 lb (1,360.8 kg)	\$33.00
33575	1.31 in	33.3 mm	1.31 in	33.3 mm	3.00 in	76.2 mm	3/4-16 UNF	3/4-10 UNC	7,000 lb (3,175.2 kg)	\$35.00

*Do not exceed the safe load

Important: Read "Load Cell Mounting Hardware Safety Guidelines" at the beginning of this section.

ITCM - Isolated Tension Cell Mount Hardware Kits



Mount only - does not include load cell

The Isolated Tension Cell Mount (ITCM) is a mounting assembly designed for tension mounting s-beam load cells in suspended hopper assemblies and mechanical scale conversions. The ITCM incorporates clevis and unique rod end ball joint assemblies, reducing the overall length to less than half of the traditional tension cell mounts, while providing correct load alignment. In addition, the load cell is completely electrically isolated from stray currents, a major cause of load cell failure. To complete the design, a grounding strap connects the two clevis assemblies to further guarantee safety to your load cells.

Standard Features

- Provides greater safety than traditional/ suspension configurations
- Complete package for ease of installation
- Built-in electrical isolation without having to use isolators (not available on 20,000 lb / 9,071.9 kg version)
- Provides correct load cell loading even in difficult installations
- Dramatically reduces overall length
- Capacities from 100 lb to 20,000 lb (45.4 kg to 9,071.9 kg)
- Clevis mounts with nylon insulating washers
- PTFE-lined rod end ball joints (not available on 20,000 lb/9,071.9 kg version)
- Completely isolates load cell from stray currents
- Grounding strap for electrical continuity
- Zinc plated clevis

Applications

- Suspended hoppers
- Mechanical scale conversions
- Replaces traditional eye bolt, isolator configurations

Part Number/Price

Part #	Load Rating	Clevis Thread	Rod End Thread	Safe Load*	Price
Mild Steel					
17968	300 lb (136.1 kg)	3/8-16	3/8-24	300 lb (136.1 kg)	\$195.00
17969	300 lb (136.1 kg)	1/2-13	3/8-24	300 lb (136.1 kg)	\$195.00
17894	500 lb (226.8 kg)	3/8-16	1/4-28	500 lb (226.8 kg)	\$195.00
17895	500 lb (226.8 kg)	1/2-13	1/4-28	500 lb (226.8 kg)	\$195.00
17896	2,000 lb (907.2 kg)	1/2-13	1/2-20	2,000 lb (907.2 kg)	\$225.00
17897	2,500 lb (1,134.0 kg)	5/8-11	1/2-20	2,500 lb (1,134.0 kg)	\$225.00
17898	4,000 lb (1,814.4 kg)	3/4-10	1/2-20	4,000 lb (1,814.4 kg)	\$225.00
17899	5,000 lb (2,268.0 kg)	3/4-10	3/4-16	5,000 lb (2,268.0 kg)	\$280.00
17900	10,000 lb (4,535.9 kg)	1-8	3/4-16	10,000 lb (4,535.9 kg)	\$280.00
17958	15,000 lb (RL20000) (6803.9 kg)	1 1/4-7	1-12	15,000 lb (6,803.9 kg)	\$1,025.00
63166	15,000 lb (RL20001) (6803.9 kg)	1 1/4-7	1-14	15,000 lb (6,803.9 kg)	\$975.00
17959	20,000 lb** (9071.9 kg)	1 1/2-6	1 1/4-12	20,000 lb (9,071.9 kg)	\$925.00
Stainless Steel					
33630	500 lb (226.8 kg)	3/8-16	3/8-24	500 lb (226.8 kg)	\$425.00
33631	300 lb (136.1 kg)	1/2-13	3/8-24	300 lb (136.1 kg)	\$425.00
33632	500 lb (226.8 kg)	3/8-16	1/4-28	500 lb (226.8 kg)	\$425.00
33633	500 lb (226.8 kg)	1/2-13	1/4-28	500 lb (226.8 kg)	\$425.00
33634	2,000 lb (907.2 kg)	1/2-13	1/2-20	2,000 lb (907.2 kg)	\$525.00
33635	2,500 lb (1,134.0 kg)	5/8-11	1/2-20	2,500 lb (1,134.0 kg)	\$525.00
33636	3,000 lb (1,360.8 kg)	3/4-10	1/2-20	3,000 lb (1,360.8 kg)	\$525.00
33637	5,000 lb (2,268.0 kg)	3/4-10	3/4-16	5,000 lb (2,268.0 kg)	\$935.00

Hardware kits do not include load cell

*Do not exceed the safe load

** Not electrically isolated

Important: Read "Load Cell Mounting Hardware Safety Guidelines" at the beginning of this section.

Note: Replacement parts for mounts can be found in the Replacement Parts Catalog.

Standard Features

- Used in the ITCM assembly
- Tinned copper braid
- Crimped sleeve on ends with 0.25 in (6.4 mm) hole
- Available in 12 in (304.8 mm), 14 in (355.6 mm), 16 in (406.4 mm), 24 in (609.6 mm) or 32 in (812.8 mm) lengths



Important: Read "Load Cell Mounting Hardware Safety Guidelines" at the beginning of this section.

Part Number/Price

Part#	Length		Price
17778	12 in	304.8 mm	\$12.00
17779	14 in	355.6 mm	\$14.00
17780	16 in	406.4 mm	\$15.00
17781	24 in	609.6 mm	\$16.00
17782	32 in	812.8 mm	\$24.00

Load Receiver Plate

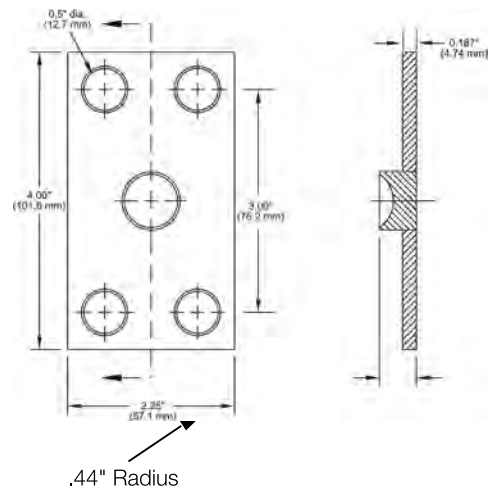
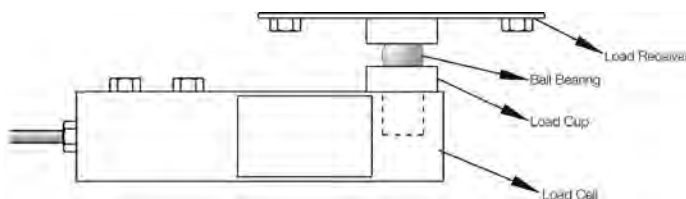
Standard Features

- Design offers accurate point loading
- Self-centering effect built in
- Ease of manufacture for custom applications
- Use with load cup and ball bearings to build a custom scale
- Ball and cup load introduction provides point loading for maximum accuracy
- Stainless steel construction



Part Number/Price

Part#	Description	Price
18832	Load receiver plate	\$50.00 each



Ball Bearings



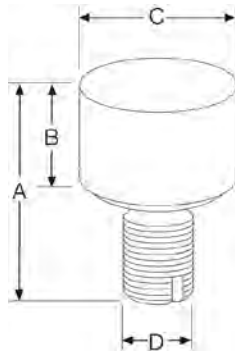
Standard Features

- Use with load cup and load receiver to build a custom scale
- 52100 chrome alloy steel

Part Number/Price

Part #	Drawing Dimensions	Price
18815	5/8 in diameter crush strength 32,000 lb	\$10.00
18816	7/8 in diameter crush strength 59,000 lb	\$13.00
65841	1.25 in diameter crush strength 100,000 lb	\$30.00

Load Cups



Standard Features

- Ball and cup load introduction provides point loading for maximum accuracy
- For use with most popular single-ended beam load cells
- Constructed of 440C

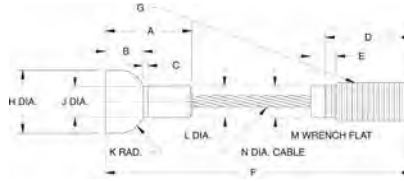
Part Number/Price

Part #	A	B	C	D	Price
31911	1.70 in	43.2 mm	0.54 in	13.7 mm	\$48.00
33654	1.12 in	28.4 mm	0.54 in	13.7 mm	\$34.00
33653	1.50 in	38.1 mm	0.80 in	20.3 mm	\$35.00
33652	2.00 in	50.8 mm	0.85 in	21.6 mm	\$85.00
33651	2.85 in	72.4 mm	0.85 in	21.6 mm	\$120.00
33650	2.85 in	72.4 mm	0.85 in	21.6 mm	\$120.00
33647	2.75 in	69.9 mm	0.50 in	12.7 mm	\$42.00
72364	1.78 in	45.2 mm	0.53 in	13.4 mm	\$58.00
69431	Replacement cup for Cardinal® SCA-50,000 load cell				\$57.00

Cardinal® Wire Rope Replacement Assemblies

Standard Features

- EL208 Cardinal wire rope assembly:
Used on 7,500 lb (3,402.0 kg) capacity FH model and 8,000 lb (3,628.7 kg) capacity EP model.
- EL209 Cardinal wire rope assembly:
Used on 20,000 lb (9,071.9 kg) capacity FH and EP models. May also be used on 15,000 lb (6,803.9 kg) capacity FH and EP models.



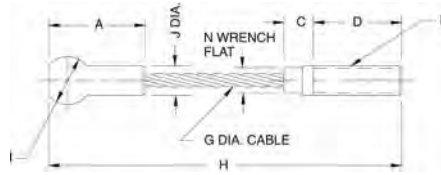
Part # 17767 EL209



Custom Wire Ropes

Standard Features

- Custom wire ropes are available for your specific applications
- When ordering, please provide the specifications listed on next page, a sample if possible, the required tension rating and total capacity



Part # 17763 EL208



Part Number/Price

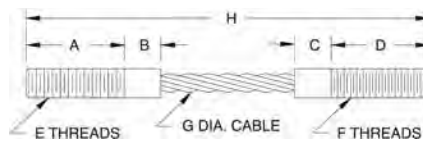
Part#	A	B	C	D	E	F	G	H	I	J	K	L & M	N	Price
17763	1.50 in	-	0.50 in	1.50 in	-	1/2-13 UNC in	0.25 in	6.00 in	0.81 in	0.43 in	-	-	0.43 in	\$95.00
	38.1 mm	-	12.7 mm	38.1 mm	-	-	6.4 mm	152.4 mm	20.6 mm	10.9 mm	-	-	10.9 mm	
17767	1.71 in	0.75 in	0.09 in	2.00 in	0.43 in	6.31 in	3/4-10 UNC-2A in	1.25 in	-	0.60 in	0.50 in	0.625 in	0.375 in	\$135.00
	43.4 mm	19.1 mm	2.3 mm	50.8 mm	10.9 mm	160.3 mm		31.8 mm	-	15.2 mm	12.7 mm	15.9 mm	9.5 mm	

Important: Read "Load Cell Mounting Hardware Safety Guidelines" at the beginning of this section.

Wire Rope Assemblies

Standard Features

- Wire rope assemblies provide better alignment and greatly increase load cell repeatability. In addition, they act as natural vibration dampeners



Part Number/Price

Part#	A	B & C	D	E	F	G	H	Safe Load*	Price					
17760	0.87 in	22.1 mm	0.50 in	12.7 mm	0.87 in	22.1 mm	1/4-20 UNC-2A	1/4-28 UNF-2A	0.12 in	3.1 mm	4.00 in	101.6 mm	400 lb (181.4 kg)	\$45.00
17762	1.25 in	31.8 mm	0.50 in	12.7 mm	1.25 in	31.8 mm	3/8-16 UNC-2A	3/8-24 UNF-2A	0.18 in	4.6 mm	5.00 in	127.0 mm	850 lb (385.6 kg)	\$53.00
17766	1.62 in	41.1 mm	0.50 in	12.7 mm	1.62 in	41.1 mm	1/2-13 UNC-2A	1/2-20 UNF-2A	0.25 in	6.4 mm	6.50 in	165.1 mm	1,400 lb (635.0 kg)	\$56.00
17765	1.62 in	41.1 mm	0.50 in	12.7 mm	1.62 in	41.1 mm	1/2-13 UNC-2A	1/2-20 UNF-2A	0.25 in	6.4 mm	5.50 in	139.7 mm	1,400 lb (635.0 kg)	\$65.00
17764	1.00 in	25.4 mm	-		1.37 in	34.8 mm	1/2-20 UNF-2A	1/2-20 UNF-2A	0.25 in	6.4 mm	4.00 in	101.6 mm	1,400 lb (635.0 kg)	\$85.00
17768	2.00 in	50.8 mm	-		2.50 in	63.5 mm	3/8-24 UNF-2A	3/8-24 UNF-2A	0.12 in	3.1 mm	5.50 in	139.7 mm	400 lb (181.4 kg)	\$125.00
17769**	1.25 in	31.8 mm	-		0.75 in	19.1 mm	1/4-28 UNF-2A	1/4-28 UNF-2A	0.12 in	3.1 mm	3.00 in	76.2 mm	400 lb (181.4 kg)	\$78.00
17771**	1.25 in	31.8 mm	-		0.75 in	19.1 mm	1/2-20 UNF-2A	1/2-20 UNF-2A	0.25 in	6.4 mm	3.00 in	76.2 mm	1,400 lb (635.0 kg)	\$60.00
115292***	1.25 in	31.8 mm	-		0.75 in	19.1 mm	1/4-28 UNF-2A	1/4-28 UNF-2A	0.12 in	3.1 mm	3.00 in	76.2 mm	300 lb (181.4 kg)	\$80.00
33084****	1.31 in	33.2 mm	-		1.00 in	25.4 mm	1/2-20 UNF	1/2-20 UNF	0.125 in	3.1 mm	3.00 in	76.2 mm	850 lb (385.6 kg)	\$75.00

*Do not exceed the safe load **Used with Rice Lake Weighing Systems flexure bases***Stainless steel ****Used with Rice Lake Weighing Systems FXB flexure bases

Custom Wire Rope Definition Form

Customer's Name: _____

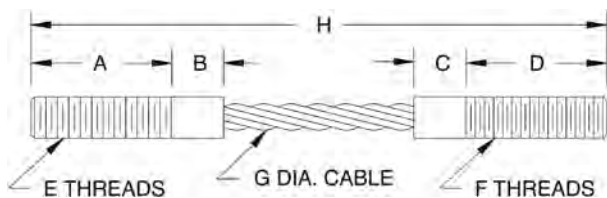
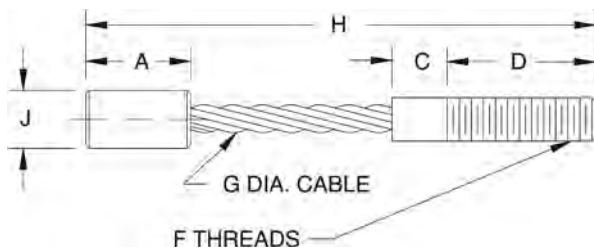
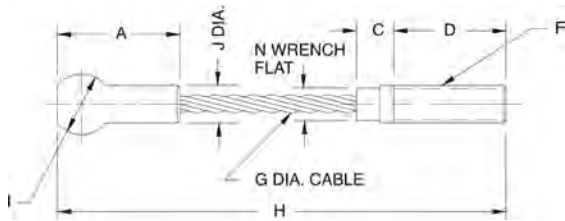
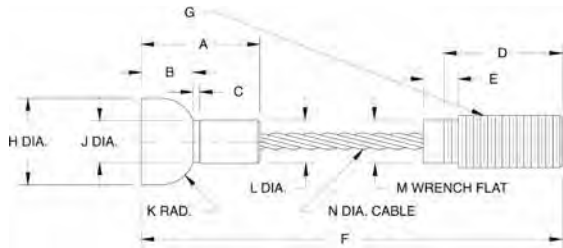
Contact Person: _____

Date: _____

Application: _____

Wire Rope* (Enter Dimensions to Form)		
A Thread length	F Threads	K Safe load
B Shank length	G Rope diameter	L Environment
C Shank length	H Overall length	M Application
D Thread length	I Ball diameter	N Style
E Threads	J Shank diameter	O Desired Material

*Use drawings below for reference



Style A



Style B



Style C

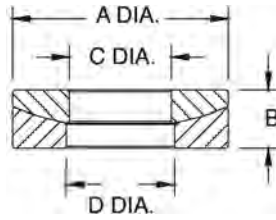


Style D



Style E

Spherical Washer Sets

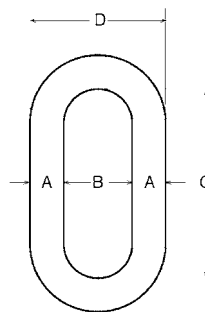


Part Number/Price

Part #	Bolt Size	A	B	C	D	Price
Mild Steel						
15196	0.25 in	6.4 mm	0.62 in	15.8 mm	0.20 in	\$11.00
15197	0.38 in	9.7 mm	0.88 in	22.4 mm	0.25 in	\$14.00
15198	0.50 in	12.7 mm	1.12 in	28.5 mm	0.31 in	\$4.50
15199	0.62 in	15.8 mm	1.38 in	35.1 mm	0.31 in	\$15.00
15200	0.75 in	19.1 mm	1.62 in	41.1 mm	0.38 in	\$21.00
15201	1.00 in	25.4 mm	2.00 in	50.8 mm	0.50 in	\$33.00
15202	1.25 in	31.8 mm	2.62 in	66.6 mm	0.50 in	\$64.00
15203	1.50 in	38.1 mm	2.88 in	73.2 mm	0.53 in	\$70.00
15205	2.00 in	50.8 mm	3.88 in	98.6 mm	0.81 in	\$110.00
Stainless Steel						
33218	0.50 in	12.7 mm	1.12 in	28.5 mm	0.31 in	\$22.00
33220	0.75 in	19.1 mm	1.62 in	41.1 mm	0.38 in	\$32.00

Standard Features

- Self-colored or hot-dip galvanized
- Forged carbon steel—quenched and tempered



Weldless End Links

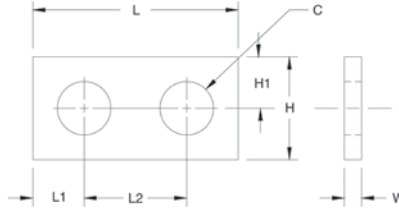
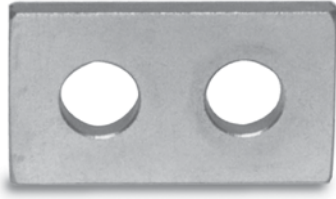


Part Number/Price

Part #	A	B	C	D	Safe Load*	Price
F312L	0.625 in	15.9 mm	1.00 in	25.4 mm	9,300 lb (4,218.4 kg)	\$45.00
17810	0.875 in	22.2 mm	2.00 in	50.8 mm	12,000 lb (5,443.1 kg)	\$150.00
21911	1.00 in	22.2 mm	2.25 in	57.2 mm	15,200 lb (6,894.6 kg)	\$295.00
65430	1.25 in	31.8 mm	2.50 in	63.5 mm	26,400 lb (11,974.9 kg)	\$135.00
21912	1.375 in	34.9 mm	2.75 in	69.9 mm	30,000 lb (13,607.8 kg)	\$425.00

*Do not exceed the safe load

Load Cell Spacers



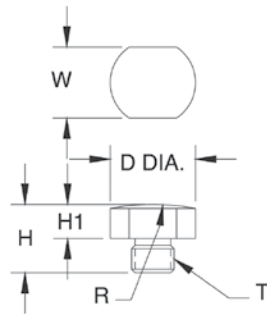
Standard Features

- Use with most popular single-ended beams
- Provides flat mounting surface required for optimum load cell performance
- Zinc-plated mild steel or stainless steel

Part Number/Price

Part#	C	H	H1	L	L1	L2	W	Price							
Mild Steel															
17754	0.53 in	13.4 mm	1.25 in	31.8 mm	0.62 in	15.7 mm	2.25 in	57.2 mm	0.62 in	15.7 mm	1.00 in	25.4 mm	0.25 in	6.4 mm	\$22.00
17755	0.78 in	19.8 mm	1.50 in	38.1 mm	0.75 in	19.1 mm	3.00 in	76.2 mm	0.75 in	19.1 mm	1.50 in	38.1 mm	0.25 in	6.4 mm	\$22.00
17756	1.03 in	26.2 mm	2.00 in	50.8 mm	1.00 in	25.4 mm	4.00 in	101.6 mm	1.00 in	25.4 mm	2.00 in	50.8 mm	0.25 in	6.4 mm	\$23.00
18260	0.53 in	13.4 mm	1.25 in	31.8 mm	0.62 in	15.7 mm	2.25 in	57.2 mm	0.62 in	15.7 mm	1.00 in	25.4 mm	0.37 in	9.4 mm	\$25.00
Stainless Steel															
17757	0.78 in	19.8 mm	1.50 in	38.1 mm	0.75 in	19.1 mm	3.00 in	76.2 mm	0.75 in	19.1 mm	1.50 in	38.1 mm	0.25 in	6.4 mm	\$30.00
18383	0.53 in	13.4 mm	1.25 in	31.8 mm	0.62 in	15.7 mm	2.25 in	57.2 mm	0.62 in	15.7 mm	1.00 in	25.4 mm	0.37 in	9.4 mm	\$26.00
18411	0.53 in	13.4 mm	1.25 in	31.8 mm	0.62 in	15.7 mm	2.25 in	57.2 mm	0.62 in	15.7 mm	1.00 in	25.4 mm	0.25 in	6.4 mm	\$25.00

Load Button



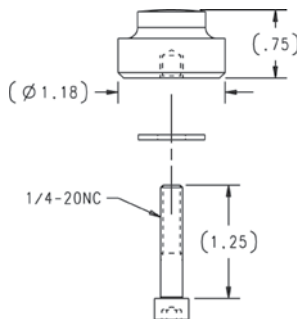
Standard Features

- Suitable for use with compression mounting assemblies, canisters, s-beams and single-ended beams
- Hardened alloy steel

Part Number/Price

Part#	T	D	H	H1	R	W	Price					
17750	3/8-24UNF	0.75 in	19.1 mm	0.60 in	15.2 mm	0.30 in	7.6 mm	2.00 in	50.8 mm	0.63 in	16.0 mm	\$30.00
17751	1/2-20UNF	0.75 in	19.1 mm	0.70 in	17.8 mm	0.30 in	7.6 mm	4.00 in	101.6 mm	0.63 in	16.0 mm	\$24.00
17752	3/4-16UNF	1.50 in	38.1 mm	0.90 in	22.9 mm	0.30 in	7.6 mm	6.00 in	152.4 mm	1.25 in	31.8 mm	\$41.00

Load Button Insert Kit



Standard Features

- To be used with RLSSB and RTI SSB load cells (1,000-5,000 lb)
- Hardened alloy steel

Part Number/Price

Part#	Description	Price
26112	Load button insert kit	\$30.00

Standard Features

- Replacement foot, adapts to most floor scales
- Use with single-ended beams to provide large, flat, adjustable introduction surface
- Special neoprene rubber sandwich base gives high accuracy, linearity and repeatability



Part Number/Price

Part #	Material	Thread Size	Base Ht.		Total Ht.		Diameter		Price
18756	Stainless steel	1/2-20 UNF	0.75 in	19.1 mm	2.62 in	66.5 mm	3.47 in	88.1 mm	\$45.00
39021	Mild steel	3/4-16 UNF-2B	0.875 in	22.3 mm	3.25 in	82.3 mm	4.40 in	111.76 mm	\$86.00
39022	Mild steel	3/4-16 UNF-2B	0.875 in	22.3 mm	4.06 in	103.1 mm	5.40 in	137.16 mm	\$125.00
110930	Mild steel	1-14 UNF	1.0 in	25.4 mm	4.06 in	103.1 mm	5.40 in	137.16 mm	\$180.00
42130	Stainless steel	M12			2.62 in	67 mm	3.47 in	88.1 mm	\$95.00

Flintec™ Adjustable Rubber Foot

Standard Features

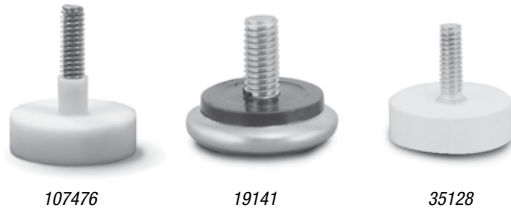
- Designed for platform scales containing Flintec SLB load cell
- Blind hole introduction
- Low profile
- Height adjustable by rotation
- Including spacer
- Stainless steel



Part Number/Price

Part #	Foot Diameter		Load Cell Capacity	Price
Flintec SLB, SB4, SB5, SB14 and SB6				
46230	2.36 in	60 mm	200 lb-500 lb	\$56.00
77561	3.14 in	80 mm	1,000 lb-5,000 lb	\$56.00
Flintec BK2				
87096	3.140 in	80 mm	200 kg-2,000 kg	\$56.00

Bench Scale Feet



Standard Features

- Rubber Pad
- 1/4-20NC threads
- Stainless Steel
- 3/8-16 threads

Part Number/price

Part#	Description	Price
Rubber Pad		
35128	Bench scale feet	\$12.75
107476	CW 90/CW 90X feet	\$19.00
Stainless Steel		
19141	Bench scale feet	\$5.50

Polyurethane Rubber Leveling



Standard Features

- 3 in (76.2 mm) overall height, all diameters
- Stainless steel stem for corrosion resistance
- Heavy-duty construction, low cost replacement feet
- Four standard diameters all with 1/2-20 UNF stainless steel stud, slotted for top-access applications
- Zinc plated carbon steel jam nut provided
- Top of stud is machined undersize 10% for easy alignment into load cell

Part Number/Price

Part#	Foot Diameter	Height	Price
74585	1.87 in	3 in	\$28.00
74586	2.00 in	3 in	\$28.00
74587	2.50 in	3 in	\$28.00
73801	3.00 in	3 in	\$28.00

Captured Ball Floor Scale Leveling Feet

Standard Features

- Carbon Steel
- Bright zinc and clear chromate plating for corrosion-resistance
- Active ball suspension provides ideal load cell loading with maximum side load protection
- Hardened alloy steel with plated finish
- Includes two jam nuts, one for wrench access
- Top of stud is machined undersize 10% for easy alignment into load cell plus slotted for top-access applications
- Stainless Steel
- Provides outstanding accuracy, repeatability and performance
- Active ball suspension provides optimum load cell performance
- Hardened stainless steel material, welded, with polished finish
- Includes two stainless steel jam nuts, one for wrench access
- Top of stud is machined undersize 10% for easy alignment into load cell plus slotted for top-access applications



Carbon

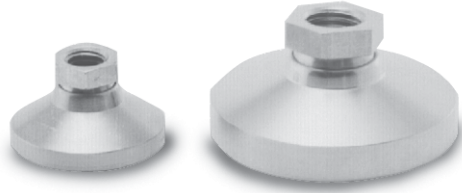
Stainless Steel

Part Number/Price

Part#	Foot Dia	Thread Size Inches	Height	Price
Carbon Steel				
74578	1.87 in	1/2-20 UNF	3.5 in	\$40.00
74579	2.00 in	1/2-20 UNF	3.5 in	\$40.00
74580	2.50 in	1/2-20 UNF	3.5 in	\$40.00
74581	3.00 in	1/2-20 UNF	3.5 in	\$40.00
74582	3.00 in	3/4-16 UNF	4.5 in	\$50.00
74583	3.00 in	1-12 UNF	4.5 in	\$60.00
74584	3.00 in	1-14 UNF	4.5 in	\$60.00
171449	3.00 in	1-14 UNF	5.0 in	\$75.00
173018	4.40 in	3/4-16 UNF	3.13 in	\$86.00
174937	5.40 in	3/16 UNF	4.13 in	\$125.00
Stainless Steel				
74572	1.87 in	1/2-20 UNF	3.5 in	\$58.00
74573	2.00 in	1/2-20 UNF	3.5 in	\$58.00
73800	2.50 in	1/2-20 UNF	3.5 in	\$58.00
74574	3.00 in	1/2-20 UNF	3.5 in	\$58.00
74575	3.00 in	3/4-16 UNF	4.5 in	\$68.00
74576	3.00 in	1-12 UNF	4.5 in	\$88.00
74577	3.00 in	1-14 UNF	4.5 in	\$88.00
92380*	2.50 in	1/2-20 UNF	3.5 in	\$58.00
175615	3.47 in	1/2-20NF	2.62 in	\$86.00

*Stem is fully threaded

Leveling Pads



Standard Features

- Replacement feet, adapt to most floor scales
- Available in cadmium-plated steel or stainless steel
- Simple “swivel” design
- Use with single-ended shear beams or bending beams to provide a large, flat load introduction surface

Part Number/Price

Part #	Thread Size	Height	Diameter	Price
Mild Steel				
18817	1/2-13 NC	1.12 in	1.87 in	\$25.00
18820	3/4-10 NC	1.50 in	3.00 in	\$44.00
Stainless Steel				
18818	1/2-13 NC	1.12 in	1.87 in	\$59.00
18833	3/4-10 NC	1.50 in	3.00 in	\$103.00

Used in conjunction with leveling pad stems

Leveling Mount



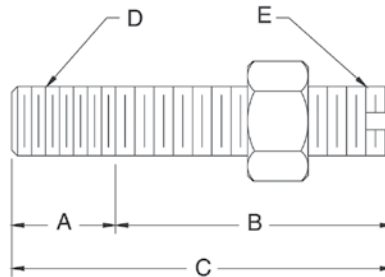
Standard Features

- Designed for use with some floor scales or machinery platforms.
- Can be used as a replacement foot on the “SP” floor scale to limit vibrations transmitted to the scale through the floor
- Provides vibration isolation on most portable platforms

Part Number/Price

Part #	Thread Size	Height	Diameter	Price
18819	1/2-13 NC	1.81 in	5.00 in	\$100.00

Leveling Pad Stems



Standard Features

- For use with leveling pads
- One jam nut included

Part Number/Price

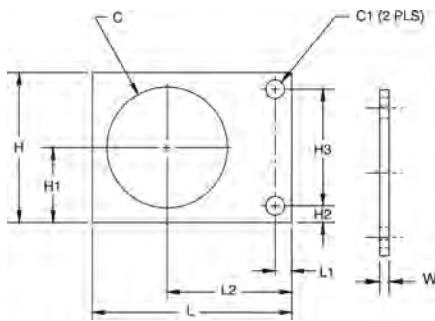
Part #	A	B	C	D	E	Slot	Material	Price
Mild Steel								
17693	0.75 in	19.1 mm	2.00 in	50.8 mm	2.75 in	69.9 mm	3/4-10 UNC 3/4-16 UNF	NO 1045 \$16.00
Stainless Steel								
17689	0.50 in	12.7 mm	1.50 in	38.1 mm	2.00 in	50.8 mm	1/2-13 UNC 1/2-20 UNF	YES SS \$24.00
17695	0.75 in	19.1 mm	2.00 in	50.8 mm	2.75 in	69.9 mm	3/4-10 UNC 3/4-16 UNF	NO SS \$38.00

Warning: Do not use to suspend a load

RoughDeck® Scale Base

Standard Features

- Secures RoughDeck and other popular floor scales
- Prevents movement in horizontal plane
- Useful with Surefoot™ and other load cell foot assemblies
- Available in stainless steel and mild steel



Part Number/Price

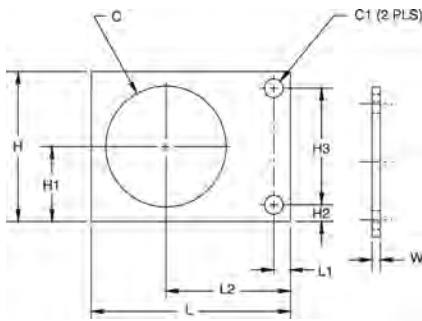
Part #	Description	Price
19075	Mild steel, 1,000 lb-10,000 lb	\$15.00
19076	Stainless steel, 1,000 lb-10,000 lb	\$18.00

Dimensions

Part #	C	C1	H	H1	H2	H3	L	L1	L2	W
19075	3.62 in	0.56 in	4.50 in	2.25 in	0.50 in	3.50 in	6.00 in	0.50 in	3.75 in	0.25 in
19076	3.62 in	0.56 in	4.50 in	2.25 in	0.50 in	3.50 in	6.00 in	0.50 in	3.75 in	0.25 in

Standard Features

- Mounting plate for Summit® 3000 floor scales
- Available in mild steel painted green



Summit® 3000 Scale Base

Part Number/Price

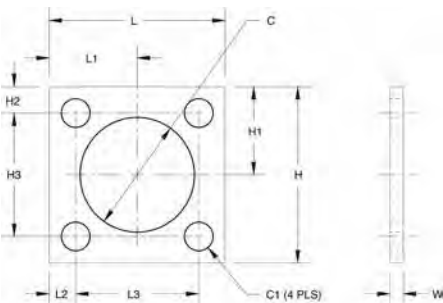
Part #	Description	Price
76149	Mild steel, 2,000 lb-10,000 lb	\$15.00

Dimensions

Part #	C	C1	H	H1	H2	H3	L	L1	L2	W
76149	3.19 in	0.56 in	4.50 in	2.25 in	0.50 in	3.50 in	6.00 in	0.50 in	3.75 in	0.25 in

Standard Features

- Suitable for use with leveling pads
- Generic mounting plate for popular floor scales
- Fits most floor scale foot assemblies
- Available in stainless steel and mild steel (mild steel parts are zinc plated/painted)



Floor Scale Base

Part Number/Price

Part #	Description	Price
18737	Mild steel, 1,000 lb-10,000 lb	\$8.00
18738	Mild steel 10,000 lb-20,000 lb	\$9.00
18751	Stainless steel 1,000 lb-10,000 lb	\$32.00

Dimensions

Part #	C	C1	H	H1	H2	H3	L	L1	L2	L3
18737	2.00 in	0.53 in	4.00 in	2.00 in	0.50 in	3.00 in	4.00 in	2.00 in	0.50 in	3.00 in
18738	3.25 in	0.81 in	5.00 in	2.50 in	0.75 in	3.50 in	5.00 in	2.50 in	0.75 in	3.50 in
18751	2.00 in	0.53 in	4.00 in	2.00 in	0.50 in	3.00 in	4.00 in	2.00 in	0.50 in	3.00 in

Complete Custom Cable Services



Standard Features

- Special cable requirements
- Custom-built cable designed specifically for your application.
- Choose from the following design elements and Rice Lake Weighing Systems will build a cable to your specifications.
- Quick turnaround
- Competitively priced
- 5,000 ft minimum purchase

Specifications

Jacket Material:

PVC
Polyurethane
Double-jacketed

Conductors:

Unlimited number
Twisted pairs
Color code
Gauge

Shielding:

Braided
Foil

Jacket Colors:

Black, brown, green, orange, red, blue, yellow,
gray, natural

Ink Colors:

Black, white, silver, orange
Custom logos

Approvals:

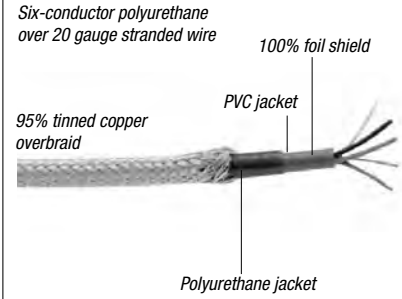
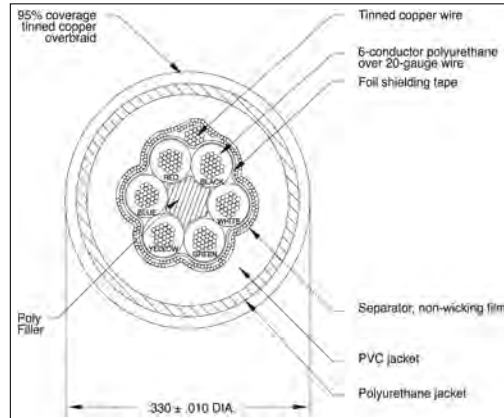
UL listed
CSA

EL147RP Plus

Rodent Protection Cables

Standard Features

- Tinned copper overbraid provides superior rodent and abrasion deterrent
- Enhanced EMI/RFI protection
- Six-conductor industry-standard color code
- Ideal for truck and railroad scales
- Diameter: 0.33 in (8.38 mm)
- Temperature rating -22°F to 176°F (-30°C to 80°C)
- Jacket coating enhanced with a chemical coating "NAW" that is distasteful to rodents

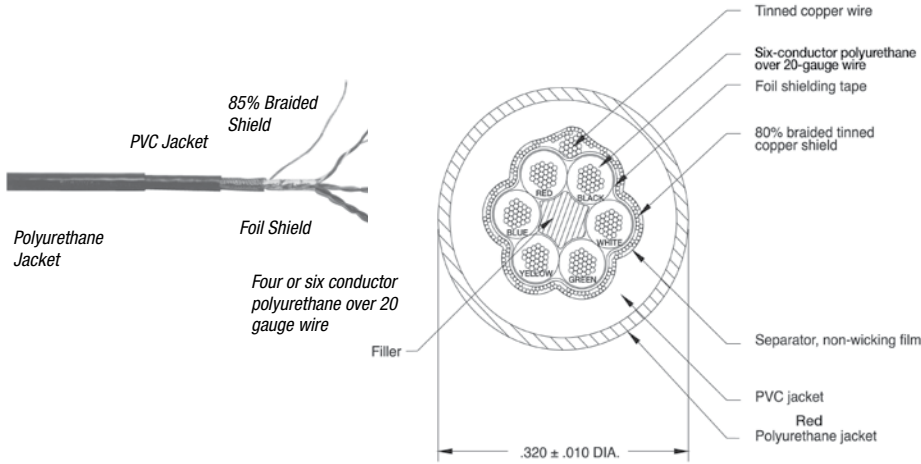


EL147RP Plus

Part Number/Price

Part #	Continuous Roll		Description	Price
31475	Custom length		Six-conductor hostile environment cable	\$3.50/ft
131964	100 ft	30.5 m	Six-conductor hostile environment cable	\$325.00
131965	250 ft	76.2 m	Six-conductor hostile environment cable	\$810.00
131966	500 ft	152.4 m	Six-conductor hostile environment cable	\$1,615.00
131967	1000 ft	304.8 m	Six-conductor hostile environment cable	\$2,995.00

Hostile Environment Load Cell Cable



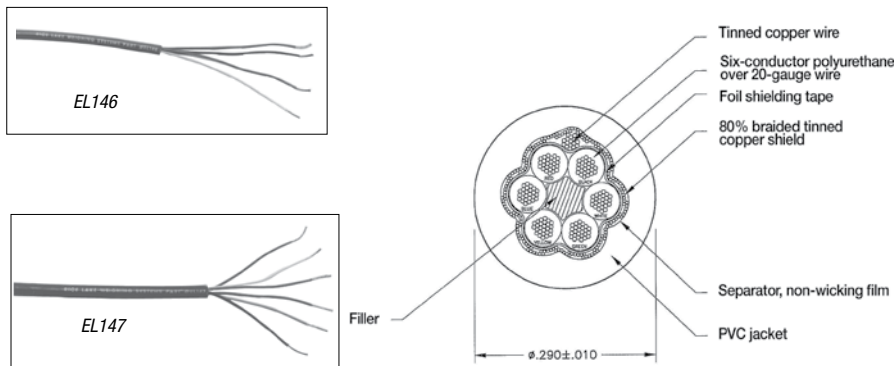
Standard Features

- EL146HE—four-wire load cell cable
- EL147HE—six-wire load cell cable
- Designed for use in hostile environments
- Polyurethane jacketing provides superior chemical and abrasion resistance
- RFI and EMI protected with foil overbraid shield
- Unmatched durability, yet extremely flexible
- All conductors are industry-standard color coded
- Diameter—EL146HE: 0.28 in (7.1 mm); EL147HE: 0.32 in (8.1 mm)
- The six-wire cable is best suited for longer runs where remote sense lines can be used
- Use the four-wire cable for repairing or extending existing cable
- Temperature rating: -22°F to 176°F (-30°C to 80°C)
- 500 V rating

Part Number/Price

Part#	Continuous Roll	Description	Price
15510	100 ft 30.5 m	Four-conductor hostile environment cable	\$150.00
15511	250 ft 76.2 m	Four-conductor hostile environment cable	\$375.00
15512	500 ft 152.4 m	Four-conductor hostile environment cable	\$725.00
15513	1,000 ft 304.8 m	Four-conductor hostile environment cable	\$1,395.00
15494	Custom Length	Four-conductor hostile environment cable	\$1.55/ft
15520	100 ft 30.5 m	Six-conductor hostile environment cable	\$225.00
15521	250 ft 76.2 m	Six-conductor hostile environment cable	\$550.00
15522	500 ft 152.4 m	Six-conductor hostile environment cable	\$1,050.00
15523	1,000 ft 304.8 m	Six-conductor hostile environment cable	\$1,895.00
15496	Custom Length	Six-conductor hostile environment cable	\$2.35/ft

Standard Load Cell Cable



Standard Features

- EL146—four-wire load cell cable
- EL147—six-wire load cell cable
- 20 AWG tinned copper wire stranded for flexibility
- Braided shielding is encased in red PVC
- All conductors are industry-standard color coded
- Diameter—EL146: 0.25 in (6.4 mm); EL147: 0.29 in (7.4 mm)
- The six-wire cable is best suited for longer runs where remote sense lines can be used
- Use the four-wire cable for repairing or extending existing cable
- Temperature rating: -22°F to 126°F (-30°C to 80°C)

Part Number/Price

Part#	Continuous Roll	Description	Price
15505	100 ft 30.5 m	Four-conductor cable	\$120.00
15506	250 ft 76.2 m	Four-conductor cable	\$275.00
15507	500 ft 152.4 m	Four-conductor cable	\$550.00
15508	1000 ft 304.8 m	Four-conductor cable	\$895.00
15493	Custom Length	Four-conductor cable	\$1.25/ft
15515	100 ft 30.5 m	Six-conductor cable	\$185.00
15516	250 ft 76.2 m	Six-conductor cable	\$435.00
15517	500 ft 152.4 m	Six-conductor cable	\$825.00
15518	1000 ft 304.8 m	Six-conductor cable	\$1,595.00
15495	Custom Length	Six-conductor cable	\$1.95/ft

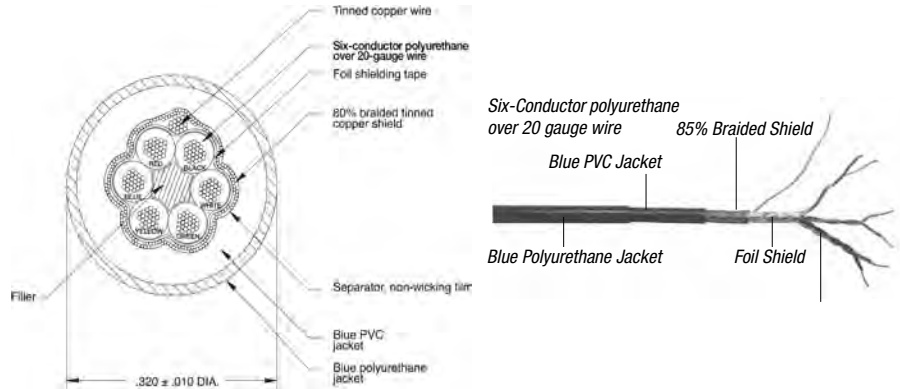
APPROVALS



EL147IS Hazardous Environment Blue Jacket Cable

Standard Features

- Designed for intrinsically safe applications (must be wired according to Factory Mutual System-approved diagram)
- Polyurethane over PVC double jacketing provides superior chemical and abrasion resistance
- Both foil and braided wire shields for added RFI and EMI protection
- Six-conductor is industry-standard color coded (Also available three-conductor)
- Diameter - 0.32 in (8.1 mm)
- Suited for longer runs where remote sense lines can be used
- Temperature rating: -22°F to 176°F (-30°C to 80°C)



Part Number/Price

Part#	Description	Price
32817	EL147IS, blue jacket six-conductor	\$2.85/ft
72241	Blue jacket, shielded three-conductor	\$2.25/ft

EL144 Communications Cable

Standard Features

- Two-conductor with bare ground
- RFI/EMI protected with foil shield
- 20 gauge conductors
- Perfect for RS-232, two-wire RS-485 and 20 mA current loop communications
- Diameter: 0.19 in (4.8 mm)



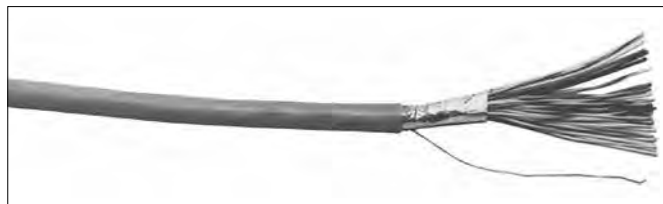
Part Number/Price

Part#	Description	Price
32803	EL144	\$0.85/ft
72691	EL11, 100 ft	\$75.00
72072	EL144, 500 ft	\$395.00
72693	EL144, 1,000 ft	\$695.00

BCD Cable

Standard Features

- Sheathed in gray PVC
- Mylar aluminum foil shield with stranded tinned copper drain wire
- Diameter: 0.375 in (9.5 mm)



Part Number/Price

Part#	Description	Price
15497	BCD, 24 AWG, 30-conductor	\$21.00/ft

Fiber Optic Cable



Color Code: Black-TXD, Blue-RXD

Part Number/Price

Part #	Description	Price
78910	Custom length	\$1.35/ft
78026	100 ft cable (30.48 m)	\$135.00
78027	200 ft cable (60.96 m)	\$270.00
78028	300 ft cable (91.44 m)	\$405.00
83052*	Fiber optic connector	\$40.00
80892	Fiber optic cable cutter	\$9.00
85548	Fiber optic hot knife	\$48.00

*Duplex fiber cable requires two connectors

*Maximum guaranteed transmission distance when used with the 320IS/IO module is 240 ft

Standard Features

- Duplex cable polyethylene black jacket material
- 4.4 + 0.10 mm outer diameter of duplex cable
- 2.2 + 0.007 mm single cable outer diameter
- Operating temperature: 32°F to 158°F (0°C to 70°C)

SURVIVOR® EL620HE High Temperature Cable



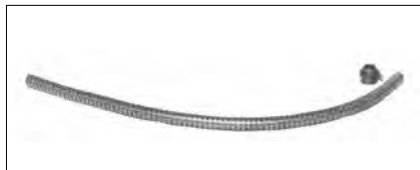
Part Number/Price

Part #	Description	Price
15605	EL620HE	\$9.75/ft

Standard Features

- Multi-conductor overall foil and braid shield
- Suitable for temperatures from -40°F to 392°F (-40°C to 200°C)
- Insulation thickness - 0.010 in (0.25 mm)
- Jacket thickness - 0.017 in (0.43 mm)
- 18 gauge, tinned copper conductors
- Six-wire or six-conductor
- FEP jacket, resistant to chemical corrosion and high temperature
- Aluminum-polyester shield with 85% tinned copper braid shield
- 150 V NEC 725 Class 2 classified for use in an airplenum non-conduit
- 0.24 in diameter cable

SURVIVOR® Cable Armor



Part Number/Price

Part #	Description	Price
17808	Galvanized steel	\$3.75/ft
17806	Stainless steel	\$4.75/ft
17807	Optional end fitting	\$2.10 each

Standard Features

- Flexible all metal protective armor
- Ideal for protecting load cell cable from mechanical abrasion or rodents
- Available in stainless steel and galvanized steel
- 0.5 in (12.7 mm) internal diameter, 2.0 in (50.8 mm) minimum bend radius
- Optional end fitting with 1/2 in male pipe thread

EL148HE Replacement Mettler Toledo® Power Cell® Cable

Standard Features

- 100% stainless steel military connector-electro deposited nickel plating with stainless banding and epoxy heat-shrink strain relief
- Stainless steel artic ring precision cut for improved connection
- Textured rubber boot for additional grip
- Standard Mettler Toledo color code
- Custom lengths available including standard lengths listed below cables



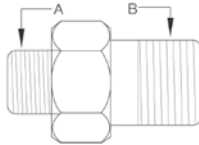
Part Number/Price

Part#	Cable Length Each	Price
100268	8 ft	\$325.00
101102	12 ft	\$335.00
104164	15 ft	\$338.00
100269	26 ft	\$375.00
100270	35 ft	\$385.00

Load Cell Conduit Adaptors

Standard Features

- Used to adapt conduit to load cells
- 303 stainless steel



31534



31535



31533

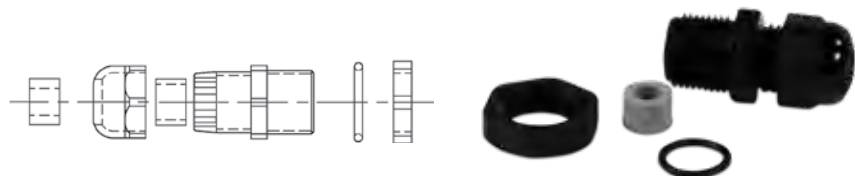
Dimensions

Part#	A	B	Price
Thread-On			
31533	3/8-24 UNF	—	\$30.00
31534	—	1/4-18 NPT	\$30.00
31535	5/8-18 UNF	1/2-14 NPT	\$30.00

Note: 31533 and 31534 are used together to form male-to-male adaptor

Standard Features

- Assemblies include cord grip, locknut, O-ring seal, gray and black reducer glands
- Fittings are made of weather- and corrosion-resistant nylon



Part Number/Price

Gland Cable Ranges								
Part #	Thread	Panel Hole Diameter		Regular (Black)		Reducer (Gray)		Price
15669	PCN9	0.625 in	15.9 mm	0.157 in-0.314 in	4.0 mm-8.0 mm	0.118 in-0.236 in	3.0 mm-6.0 mm	\$4.65
15670	3/8 NPT	0.687 in	17.4 mm	0.157 in-0.314 in	4.0 mm-8.0 mm	0.118 in-0.236 in	3.0 mm-6.0 mm	\$4.30
15671	1/2 NPT	0.844 in	21.4 mm	0.236 in-0.472 in	6.0 mm-12.0 mm	0.200 in-0.354 in	5.1 mm-9.0mm	\$4.90

EL214 Cable Splicing Kit



Standard

- Designed for a complete, professional transducer cable splice
- Prevents moisture from entering the load cell through the cable connector
- Each kit contains a high-impact plastic splicing box, liquid-tight cable fittings, circuit card, PTFE sleeving, pre-measured potting compound and complete instructions

Features

Part Number/Price

Part #	Description	Price
15485	EL214	\$125.00

Specifications

Dimensions:

(W x H x D) 3.00 in x 1.00 in x 1.50 in (76.2 mm x 25.4 mm x 38.1 mm)

Mounting Centers:

2.50 in (63.5 mm)

Number of Connections:

Seven

Cable Diameter:

0.187 in-0.312 in (4.7 mm-7.9 mm)

Cure Time For Potting:

Epoxy-polyamide resin cures in two hours at 73°F (23°C)

EL214T Cable Splicing Kit



Standard Features

- Designed to accommodate cables larger than the EL214; all other dimensions and performance features are the same

Part Number/Price

Part #	Description	Price
15486	EL214T	\$135.00

Specifications

Dimensions:

(W x H x D) 3.00 in x 1.00 in x 1.50 in (76.2 mm x 25.4 mm x 38.1 mm)

Mounting Centers:

2.50 in (63.5 mm)

Number of Connections:

Seven

Cable Diameter:

0.270 in-0.480 in (6.9 mm-12.2 mm)

Cure Time For Potting:

Epoxy-polyamide resin cures in two hours at 73°F (23°C)

EL215 Cable Splicing Kit



Standard Features

- Designed for use in weather-exposed or direct-burial locations
- Each kit contains plastic splicing tube, circuit board, insulating resin and instructions

Part Number/Price

Part #	Description	Price
15612	EL215	\$80.00

Specifications

Dimensions:

(W x L) 1.375 in x 6.0 in (34.9 mm x 152.4 mm)

Number of Connections:

Seven

Cable Diameter:

Up to 0.75 in (19.1 mm)

Cure Time For Potting:

Two hours at 70°F (21°C)

Flintec™ Load Cell Cable Replacement Kits

Standard Features

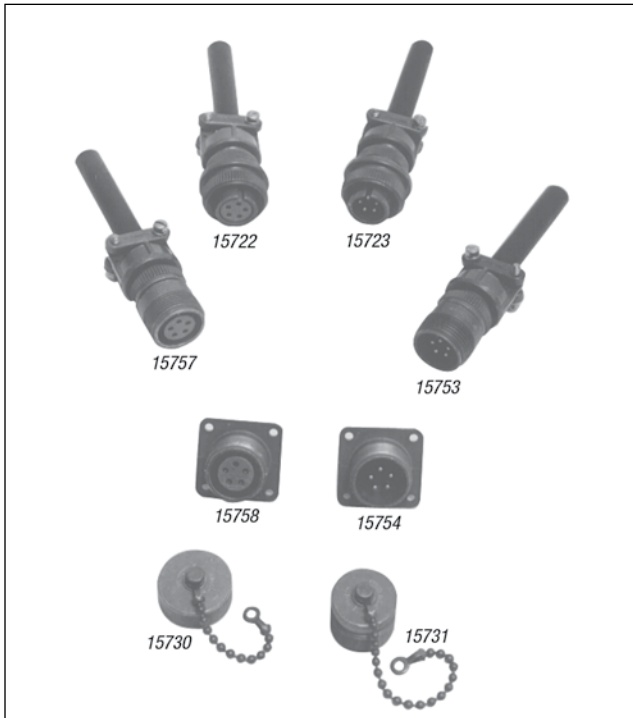
- Each kit includes cable for four Flintec SB4 or UB1 load cells as listed



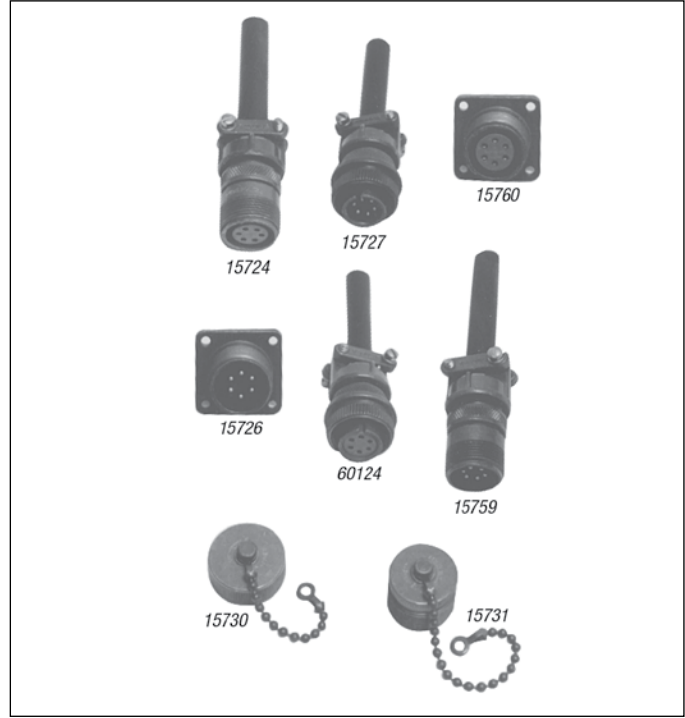
Part Number/Price

Part#	Description	Cable Length Ea. Feet (m)		Price
18412	For SB4, 225-5,200 lb (102.1-2,358.7 kg)	10 ft	3.1 m	\$350.00
18413	For SB4, 11,250-22,500 lb (5,103-10,206 kg)	15 ft	4.6 m	\$375.00

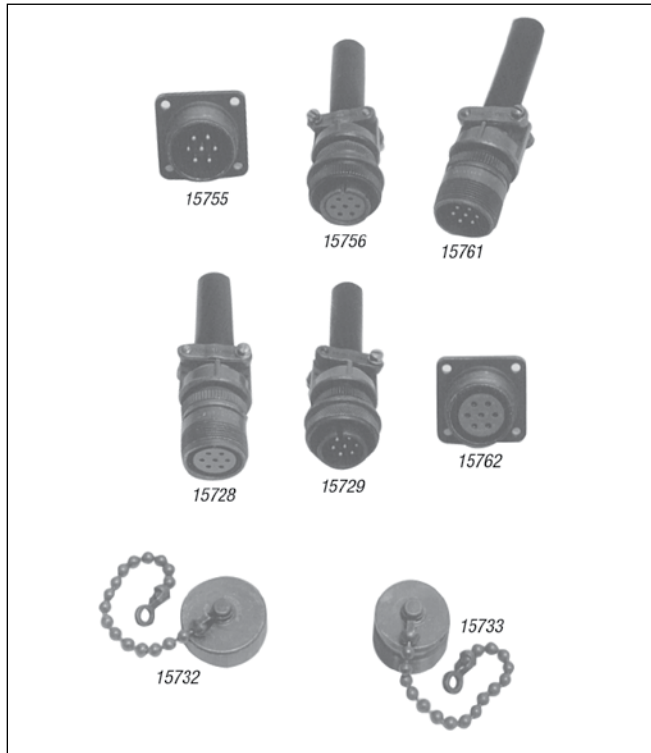
Five-Position Connectors, Shell Plugs, Receptacles



Six-Position Connectors, Shell Plugs, Receptacles



Seven-Position Connectors, Shell Plugs, Receptacles



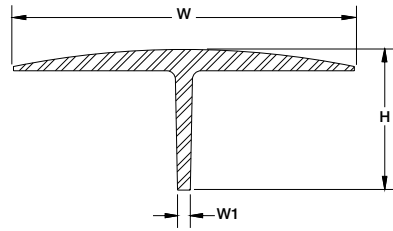
Part Number/Price

Part #	Description	Price
15753	Five-Pin, external thread	\$28.00
15722	Five-socket, internal thread	\$29.00
15723	Five-Pin, internal thread	\$28.00
15757	Five-socket, external thread	\$34.00
15754	Five-Pin chassis mount, external thread	\$20.00
15758	Five-socket chassis mount, external thread	\$20.00
15730	Dust cap for ext. thread five-position connector	\$11.00
15731	Dust cap for int. thread five-position connector	\$15.00
15759	Six-Pin, external thread, male	\$28.00
60124	Six-socket, internal thread connector, female fits Toledo load cells, Condec indicators	\$24.00
15727	Six-Pin, internal thread, male	\$27.00
15724	Six-socket, external thread	\$31.00
15726	Six-Pin chassis mount, external thread	\$20.00
15760	Six-socket chassis mount, external thread	\$19.00
15730	Dust cap for ext. thread six-position connector	\$11.00
15731	Dust cap for int. thread six-position connector	\$15.00
15761	Seven-Pin, external thread	\$29.00
15756	Seven-socket, internal thread	\$31.00
15729	Seven-Pin, internal thread	\$31.00
15728	Seven-socket, external thread	\$31.00
15755	Seven-Pin chassis mount, external thread	\$20.00
15762	Seven-socket chassis mount, external thread	\$23.00
15732	Dust cap for ext. thread seven-position connector	\$16.00
15733	Dust cap for int. thread seven-position connector	\$27.00

T-Grip Molding

Standard Features

- Designed for use in truck scale applications to prevent spill-over into the pit
- Impact, tear, and weather-resistant EPDM rubber
- Barbed web to hold molding in place
- Web thickness 0.22 in (5.6 mm)
- Available by the foot or in 10.0 ft (3.1 m), 11.0 ft (3.4 m), 70.0 ft (21.34 m), 80.0 ft (24.4 m) and 100.0 ft (30.5 m) lengths. Maximum continuous length is 450 ft (137 m)



Part Number/Price

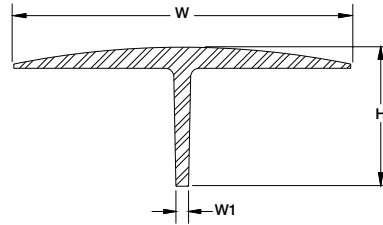
Part#	H	W	W1	Length	Price			
18799	2.56 in	65.0 mm	5.75 in	146.1 mm	0.22 in	5.6 mm	Sold by the foot	\$7.25/ft
18800	2.56 in	65.0 mm	5.75 in	146.1 mm	0.22 in	5.6 mm	10 ft 3.05 m	\$72.50
18801	2.56 in	65.0 mm	5.75 in	146.1 mm	0.22 in	5.6 mm	11 ft 3.35 m	\$79.75
18802	2.56 in	65.0 mm	5.75 in	146.1 mm	0.22 in	5.6 mm	70 ft 21.34 m	\$475.00
33219	2.56 in	65.0 mm	5.75 in	146.1 mm	0.22 in	5.6 mm	80 ft 24.4 m	\$515.00
33222	2.56 in	65.0 mm	5.75 in	146.1 mm	0.22 in	5.6 mm	100 ft 30.5 m	\$650.00

Note: Maximum continuous length is 450 ft. Call for price and availability.

T-Strip Molding

Standard Features

- Designed for use in truck scale applications to prevent spill-over into the pit
- Impact, tear, and weather-resistant SBR rubber
- Web thickness 0.25 in (6.4 mm)
- Available by the foot or in 10.0 ft (3.1 m), 11.0 ft (3.4 m), 70.0 ft (21.34 m), 80.0 ft (24.4 m) and 100.0 ft (30.5 m) lengths. Maximum continuous length is 450 ft (137 m)



Part Number/Price

Part#	H	W	W1	Length	Price			
18736	2.00 in	50.8 mm	4.50 in	114.3 mm	0.25 in	6.4 mm	Sold by the foot	\$6.75/ft
18776	2.00 in	50.8 mm	4.50 in	114.3 mm	0.25 in	6.4 mm	10 ft/3.05 m	\$67.50
18797	2.00 in	50.8 mm	4.50 in	114.3 mm	0.25 in	6.4 mm	11 ft/3.35 m	\$74.25
18798	2.00 in	50.8 mm	4.50 in	114.3 mm	0.25 in	6.4 mm	70 ft/21.34 m	\$435.00
33223	2.00 in	50.8 mm	4.50 in	114.3 mm	0.25 in	6.4 mm	80 ft/24.4 m	\$485.00
33224	2.00 in	50.8 mm	4.50 in	114.3 mm	0.25 in	6.4 mm	100 ft/30.5 m	\$585.00

Note: Maximum continuous length is 450 ft. Call for price and availability.

Electronic Scale Tickets

Hecon® Printers, EL522 & EL516 - 20266

Standard Features

- Carbon triplicate interleaved
- Size: (W x L) 4.25 in x 7.875 in (127 mm x 200 mm)
- Order quantity: 500 per package

20266

SP2200, SP2000, RL250 & EL500 - 20265

Standard Features

- Carbon triplicate interleaved, perforated and glued on one end
- Size: (W x L) 5.5 in x 9 in (139.7 mm x 228.6 mm)
- Order quantity: 500 per package

20265

Rice Lake Scales - 71630 or 105182

Standard Features

- Carbonless duplicate or triplicate
- Size: (W x L) 4.25 in x 7 in (107 mm x 177.8 mm) attached at 4.25 side
- Order quantity: 500 per package

Custom (duplicate):

- Add company name (min. order 5 packs - \$48.00 ea)

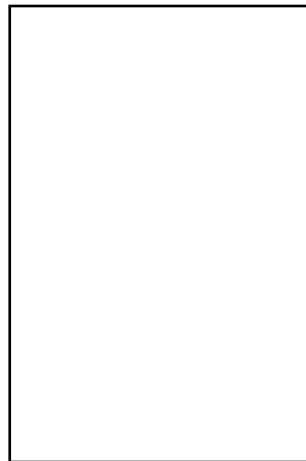
Custom (triplicate):

- Add company name (min. order 5 packs - \$68.00 ea)

Blank Scale Ticket - 22263

Standard Features

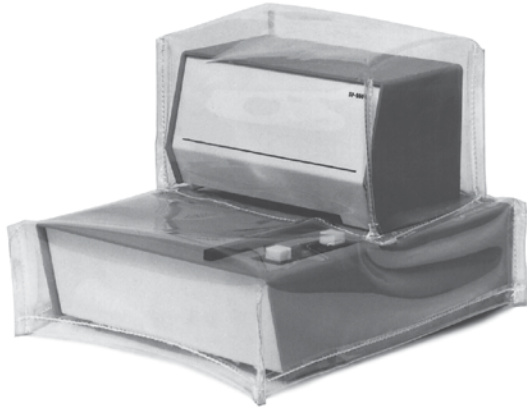
- Three-part carbonless
- White, canary yellow and pink
- Size: (W x L) 4.25 in x 5.5 in (108 mm x 140 mm)
- Attached at 4.25 edge
- Custom - Add company name (min. order of 2,500 - \$0.20 ea)



Part Number/Price

Part #	Description	Price
20266	Hecon printers, EL522 & EL516, 500/pack	\$92.00
20265	SP2200, SP2000, EL250 & EL500, 500/pack	\$95.00
71630	Rice Lake ticket, 2 part, 500/pack	\$50.00
105182	Rice Lake ticket, 3 part, 500/pack white, canary yellow, pink	\$72.00
22263	Blank scale ticket, each	\$0.22 each

Dust Covers



Standard Features

- Tough, flexible transparent vinyl, constructed with heavy-duty stitching
- Loose fit allows for operation of switches or controls through the dust cover
- Available for most types of scale equipment

Protect your electronic scales, weight indicators and printers with a dust cover. Reduce costly repairs and downtime due to moisture penetrating through instrument enclosures during cleanup or operation.

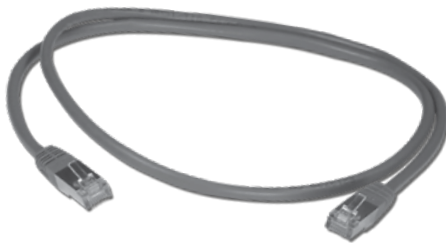
Part Number/Price

Part #	Model	Price
Rice Lake		
21210	SP2000/SP2200	\$75.00
EPSON®		
29582	TM290/295	\$55.00
35666	TM-U200 TM-U220	\$60.00
111840	TM-U590	\$65.00
Oki-Data®		
21208	Oki-Data 184 Turbo Printer	\$65.00
21226	Oki-Data 320/390	\$65.00

Custom covers and specials available; consult factory.



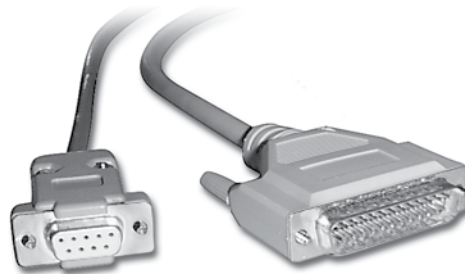
156809 (1 m)
156811 (3 m)
156815 (5 m)



156817 (1 m)
156818 (3 m)
156821 (5 m)



156806 (1 m)
156807 (3 m)
156808 (5 m)



Part Number/Price

Part #	Description	Price
Interface Cables for SP-2200, TM-U295, TM-U590 and Star® Printers		
15547	Blunt end, 25-Pin D-sub male RS-232 serial interface cable	\$65.00
15548	25-Pin D-sub male to 25-Pin D-sub male 20 mA serial interface cable (SP2200 only)	\$65.00
15568	25-Pin D-sub male to 25-Pin D-sub male RS-232 serial interface cable	\$65.00
Consult	Custom 20 mA/RS-232 serial interface cable	\$110.00
Interface Cables for I-Class		
15547	Blunt end, 25-Pin D-sub male RS-232 serial interface cable	\$65.00
Consult	Custom RS-232 interface cable	\$110.00
Interface Cables for Eltron® desktops, E-4203 and M-4206		
41276	DB9 male RS-232 cable to blunt end	\$65.00
Straight Cable		
50749	DB9 female to DB9 female	\$55.00
41279	DB25 male to DB9 male	\$65.00
70056	DB9M to DB9F	\$35.00
Null Modem Cable		
66535	DB9F to DB9 female, null modem	\$45.00
64794	DB9F to DB9M, null modem, 6ft	\$65.00
USB Cable		
79074	USB-A to USB-B	\$30.00
153603	USB to 9-Pin male RS-232 adaptor	\$85.00
156806	USB 2.0 A to A, 1 m	\$30.00
156807	USB 2.0 A to A, 3 m	\$45.00
156808	USB 2.0 A to A, 5 m	\$55.00
156809	USB 2.0 to USB-B male type A	\$50.00
156815	USB 2.0 to USB-B male stype A to male type B micro, 3m	\$50.00
156811	USB 2.0 to USB-B male stype A to male type B micro, 5m	\$65.00
156817	Ethernet CAT.5E RJ45 1 m	\$30.00
156818	Ethernet CAT.5E RJ45 3 m	\$37.00
156821	Ethernet CAT.5E RJ45 5 m	\$45.00
Ethernet Cable/RJ45		
72697	RJ45 to RJ45, 7 ft (patch)	\$35.00
78860	RJ45 to RJ45, cross over 7 ft	\$35.00
75594	RJ45 to 9-Pin female	\$65.00
Adaptors/Gender Changers		
119064	Female to female DB9 null modem adaptor	Consult
165698	Female to male DB9 gender changer	Consult
130789	Female to male DB9 null modem adaptor	Consult
Blunt End Cables		
22436	DB9F	Consult
130213	DB25M	Consult

Blunt-end cables interface to: UMC444, UMC555, UMC600, IQ700, IQ plus® 310A, IQ plus 355, IQ plus 390-DC, IQ plus 510, IQ plus 590-DC, IQ plus 710, IQ plus 800, and IQ plus 810, 520 and 920®

Custom cables are designed to interface with your specific equipment. Please specify equipment model number and connector type. Standard cable length is 5 ft (1.5 m).

Static Brushes



Part #	Staticmaster Part #	Description	Price
76669	1C200	Static brush 1 in	\$131.00
76670	1C200R	Replacement cartridge	\$85.00

Static Brushes



Part #	Staticmaster Part #	Description	Price
76671	3C500	Static brush 3 in	\$199.00
76672	3C500R	Replacement cartridge	\$134.00

Ionizing Strips



Part #	Staticmaster Part #	Description	Price
76677	1U400	Ionizing unit 1 in x 1 in	\$134.00
76678	1U200	Ionizing unit 1 in x 1 in	\$85.00
76676	2U500	Ionizing unit 1 in x 3 in	\$134.00

Ionizing Strips Accessories



Part #	Staticmaster Part #	Description	Price
76679	BF1	Ionizer positioner	\$69.00
76680	BF2	Ionizer positioner only - C bracket	\$98.00

Standard Features

- Packets
- Bagged desiccants to protect your enclosed electronic components from moisture and humidity
- Useful in junction boxes, indicators and all scale electronics



Part Number/Price

Part#	Description	Price
16038	Mini Pax® 7 g	\$1.15
16039	NatraSorb® 20 g	\$2.10
92240	3 g	\$1.10

Industrial Corrosion Inhibitor

Standard Features

- Our best indicator protection
- Special chemical combination provides superior protection
- Protects 5 cubic feet/1.4 cubic meters of enclosure volume for approximately one year
- Dimensions: (W x H) 2.5 in x 1.5 in (63.5 mm x 38.1 mm)



Part Number/Price

Part#	Description	Price
16037	Corrosion inhibitor	\$30.00

Crimper and Lead Seals

Standard Features

- Crimper
- 5.0 in (127.0 mm) seal press with two 0.5 in (12.7 mm) engraving dies
- Chrome finish
- Maximum number of characters that can be engraved on die is nine
- Compound leverage
- Quick delivery on custom dies
- Lead seals
- Heavy duty seal with galvanized steel wire
- Length 16.0 in (406.4 mm)



Part Number/Price

Part#	Description	Price
21111	Crimper and two die blanks	\$130.00
15318	Crimper die blank (replacements)	\$55.00
15317	100 seals/pkg	\$45.00

Static Control Table Mat and Floor Mat



An absolute must for every workbench, this kit includes a three-layer, 2 ft x 4 ft table mat, 4 ft x 6 ft floor mat, ground cord and adjustable wrist strap. Designed specifically for energized circuit work, the static control table and floor mat provide superior protection against ESD.

Part Number/Price

Part #	Description	Price
34265	Static control table mat and floor mat	\$825.00

Static Control Wrist Strap



The single most important personal accessory for protecting ESD-sensitive components and circuits, this wrist strap protects against charges from the body. The wrist strap consists of a comfortable elastic cuff or band and a detachable conductive cord for grounding the wrist band.

Part Number/Price

Part #	Description	Price
34263	Static control wrist strap	\$50.00

Static Shielding Bags



This static shield bag offers total ESD protection, whether you're transporting ESD-susceptible products across the room or across the country. The outer layer of the bag consists of an abrasion-resistant polyester, while the antistatic polyethylene inner layer retards triboelectric static charging from inside the bag.

Part Number/Price

Part #	Description	Price
16150	Static shielding bags, 8 in x 10 in	\$1.10 each
16151	Static shielding bags, 12 in x 18 in	\$3.25 each

Static-Safe Service Kit

Standard Features

- Eliminates static for safe board replacement
- Connects a field service technician and the static-safe work surface to the same ground point
- Harmlessly drains static charges from the body and from any conductive objects placed on the mat
- Folds into a compact unit for transport and storage



Part Number/Price

Part#	Description	Price
32818	Static-safe service kit	\$185.00

Portable Megometer

Standard Features

- Load cell insulation tester
- Easy to use, accurate and reliable
- Designed for strain gauge transducer testing



Part Number/Price

Part#	Description	Price
36253	Portable megometer	\$695.00

Rice Lake's Scale Technician Kits

Take Rice Lake's commitment to customer service into the field. Rice Lake's Scale Technician Kit has everything you need in one convenient backpack to troubleshoot and repair wherever you are.

PN 166205 Technician Tool Kit **\$995.00**

- Rice Lake backpack
- Simulator with vernier
- Digital volt meter
- Communication Kit
- Document Kit



PN 166204 Communication Kit **\$125.00**

- Cinch sack
- Document Kit
- 6-in-1 screwdriver
- Small RLWS screwdriver
- Test LEDs
- USB to serial converter
- DB9M to DB9F straight cable
- DB9F to blunt end cable
- DB25M to blunt end cable
- Female to female DB9 null modem adaptor
- Female to male DB9 gender changers
- Null modem adaptor
- TCP/IP patch cable
- TCP/IP crossover cable



PN 166203 Document Kit **\$10.00**

- Pinouts for a DB9 and DB 25 cable shows both male and female connectors
- Pinouts and color codes for a patch and crossover Ethernet cable
- Recommended maximum cabling distances of RS-232, 20mA, 485, and Ethernet TCP/IP
- Standard ASCII chart in both decimal and hexadecimal
- Links to website to download latest version of Revolution® and iRev® (on CD)
- Link to freeware terminal program download (PUTTY, Hercules, RealTerm. etc.)
- Load cell color wire chart
- Weigh Modules and Vessel Weighing Handbook PN 43918
- Load Cell Weigh Module Handbook PN 22054



PN 118432 Small Screwdriver **\$3.00**

