

MSI Shear Web Load Cell

Standard Features

- Designed to be placed above the trunnion of a load block. This integrated low-profile load cell eliminates headroom loss
- Off-axis compensation

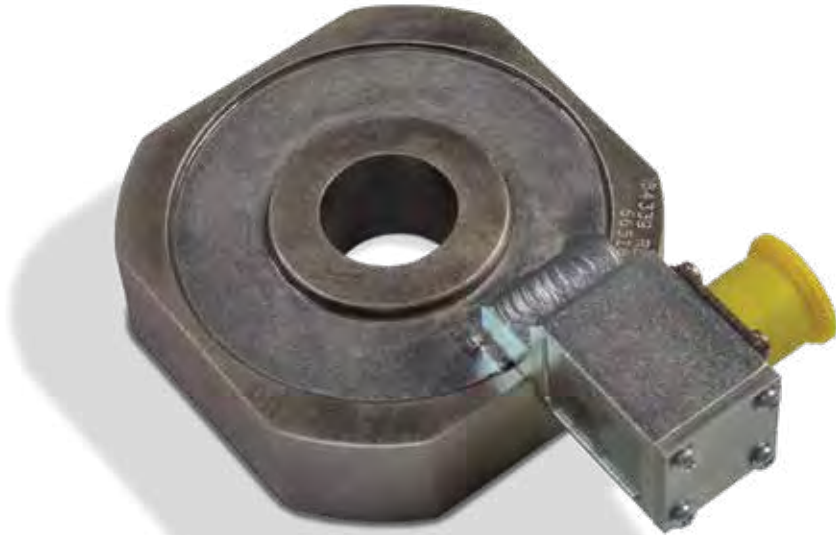
Specifications

Accuracy (Static Load):
± (0.1%) of rated capacity

Material:
4340 alloy steel, zinc plated

IP Rating:
IP67

Resistance:
700 ohms



Part Number/Price

Part #	Description	Est. Weight	Price
160651	10,000 lb/5,000 kg capacity	5 lb	\$1,850.00
163595	20,000 lb/10,000 kg capacity	10 lb	\$1,950.00
163596	40,000 lb/20,000 kg capacity	20 lb	\$2,095.00
163829	60,000 lb/30,000 kg capacity	30 lb	\$2,195.00
163597	80,000 lb/40,000 kg capacity	34 lb	\$2,295.00
163598	100,000 lb/50,000 kg capacity	38 lb	\$2,450.00
159550	120,000 lb/60,000 kg capacity	60 lb	\$2,695.00
163599	160,000 lb/80,000 kg capacity	105 lb	\$2,750.00
163600	200,000 lb/100,000 kg capacity	215 lb	\$2,995.00

Options/Accessories

Part #	Description	Price
165978	Load cell interface cable to TranSend™, 6.5 ft	\$275.00
165979	Load cell interface cable to TranSend, 10 ft	\$295.00
165980	Load cell interface cable to TranSend, 16 ft	\$310.00
165989	Load cell interface cable to TranSend, 20 ft	\$340.00
165990	Load cell interface cable to TranSend, 25 ft	\$370.00
165991	Load cell interface cable to TranSend, 32 ft	\$425.00
134498	Load cell interface cable to CellScale™, 5 ft	\$325.00
134495	Load cell interface cable to CellScale, 10 ft	\$350.00
134500	Load cell interface cable to CellScale, 15 ft	\$370.00
134499	Load cell interface cable to CellScale, 20 ft	\$395.00
134501	Load cell interface cable to CellScale, 25 ft	\$425.00

Dimensions

Part #	Capacity	A	B	C (+0.005- 0.000)	D	E	F	G	H	Required Hook Shank Diameter (+0.000,-0.005)
160651	10,000 lb	3.500	1.350	1.005	2.450	1.880	4.905	1.500	1.000	1.000
163595	20,000 lb	6.000	2.500	1.505	3.500	2.443	7.405	1.750	1.250	1.500
163596	40,000 lb	7.500	3.150	2.005	5.000	2.580	8.905	2.000	1.375	2.000
163829	60,000 lb	8.000	3.190	2.505	5.250	2.695	9.405	2.188	1.500	2.500
163597	80,000 lb	8.500	3.650	3.505	5.750	2.680	9.905	2.313	1.500	3.500
163598	100,000 lb	9.125	3.873	4.005	7.000	2.382	10.530	2.668	1.875	4.000
159550	120,000 lb	9.125	3.873	4.005	7.000	2.382	10.530	2.813	2.000	4.000
163599	160,000 lb	16.000	7.030	6.005	14.500	2.955	17.405	4.625	2.500	6.000
163600	200,000 lb	16.000	7.030	6.005	14.500	2.955	17.405	5.125	3.000	6.000

