

Elster 15, Elster 20, Elster 25 Industrial oil meters

Sizes 1/2", 3/4" & 1"



	Elster 15	Elster 20	Elster 25
Performance	1/2"	3/4"	1"
Min flow GPH (l/h)	2.6 (10)	8 (30)	20 (75)
Max rec flow GPH (l/h)*	105 (400)	265 (1000)	530 (2000)
Peak flow GPH (l/h)	160 (600)	400 (1500)	800 (3000)
Accuracy	±1%	±1%	±1%
Max operating pressure psi (bar)	225 (15)	225 (15)	225 (15)
Max operating temperature °F (°C)	266 (130)	266 (130)	266 (130)
Register reading	1/2"	3/4"	1"
Register reading smallest quantity USG (l)	0.01 (0.1)	0.01 (0.1)	0.01 (0.1)
Capacity of register (millions) USG (l)	1 (l)	1 (10)	1 (10)
Physical description	1/2"	3/4"	1"
Threaded connection type	1/2" MNPT	3/4" MNPT	1" MNPT
Safety fileter mesh (included)	40	40	40
Recommended strainer mesh	60	40	40
Optional pulse units	1/2"	3/4"	1"
Reed pulses per USG (l)	10 (10 or 1)	10 (l)	1 (l)
Inductive pulses per USG (l)	278** (100)	100 (100)	100 (100)

*Meter selection should be based on maximum recommended flow rating.

**Prior to 2008: 1000 ppg.

Materials

Meter body	Cast bronze
Working chamber	Brass
Thimble (bushing)	Brass (Elster 20) Ryton (Elster 15, Elster 25)
Shutter	Brass (Elster 20) Ryton (Elster 15, Elster 25)
O-rings	Viton
Piston	Anodized aluminum
Safety filter	316 stainless steel

Operation

This Elster AMCO Water line of high precision oscillating piston oil flow meters covers a range of flows from 2.6 to 800 GPH. These meters are capable of handling a wide viscosity range including light and medium heating oil, diesel, and even heavy heating oil (meters 3/4" and 1"). Accuracy is ±1% throughout the operating flow range for each meter. Each meter is tested with #2 oil at 70°F to verify the accuracy.

Typical applications of the Elster AMCO oil meters include: Measuring heating oil consumption in burners for heating units and industrial furnaces; measuring fuel consumption in land-based and sea-based diesel engines including emergency power generators; industrial batching applications.

The user has the option of mounting these meters horizontally, vertically or on any plane in between. To assist reading at whatever angle the meter is mounted, the register dial may be rotated through a full 360° (except on reed pulser units) Elster AMCO oil meters include a bottom plate that is easily removed to allow for cleaning or inspection of the measuring chamber without removing the meter from the line. Also, the register face features a 1:1 piston ratio low-flow indicator to detect plumbing leaks.

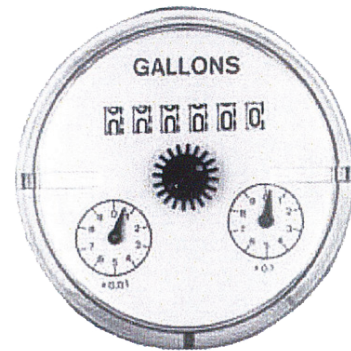
Pulse units are available in both high and low speed pulse outputs, allowing interfacing for batch operations, rate of flow indication, or remote readouts and control. Typically, reed pulsers are used for remote totalization. The high resolution of the inductive pulser makes it ideal for rate of flow or batching applications.



Reed pulser

- 2-wire system
- Max voltage: 48 VAC/VDC
- Max current: 50 mA
- Max switch power: 3W
- Max resistor (47 Ohm) power: 0.5W
- On time: 50 ± 10%
- 9ft. (3m) of 2-wire cable is provided

Note: This pulser is not polarity (+/-) sensitive. This pulser adds approximately 0.2lbs to the weight of the meter.



Inductive pulser

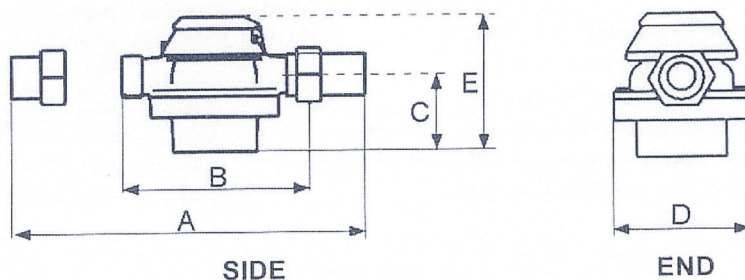
- 2-wire system
- Voltage: 5-15 VDC
- Switching current: 1mA (open), 4mA (closed) @ 8 VDC
- On time: 50 ± 10%
- No cable supplied

Note: This pulser is polarity (+/-) sensitive. This pulser adds approximately 1.3lbs to the weight of the meter.

Dimensions and net weight

Meter Size	A		B		C		D		E						Weight	
									No pul.		Read pul.		Ind. pul.			
	in	(mm)	in	(mm)	in	(mm)	in	(mm)	in	(mm)	in	(mm)	in	(mm)	lbs	(kg)
1/2"	9.875	(250)	6.5	(165)	1.75	(45)	4.125	(105)	4.095	(104)	5.039	(104)	7.165	(182)	4.6	(2.1)
3/4"	10.5	(270)	6.5	(165)	2.125	(54)	4.125	(105)	4.449	(137)	5.394	(137)	7.52	(191)	5.5	(2.5)
1"	11.875	(300)	7.5	(190)	3.032	(77)	5.125	(130)	5.512	(164)	6.457	(164)	8.583	(218)	9.3	(4.2)

Note: All dimensions are ±1/8".



elster

www.elsteramcowater.com

United States
Elster AMCO Water, LLC
10 SW 49th Avenue, Bldg. 100
Ocala, FL 34474
T +1 352 369 6500
F +1 352 368 1950
watermeters@elster.com

Canada
Elster Canadian Meter Company Inc.
1100 Walker's Line, Suite 101
Burlington, Ontario L7N 2G3
T +1 866 703 7581
F +1 905 634 6705
watermeters@elster.com

Caribbean
Elster AMCO Water, Inc.
P.O. Box 225, Carretera 112 KM 2.3
Isabella, PR 00662
T +1 787 872 2006
F +1 787 872 5427
prwatermeters@elster.com

© 2014 by Elster. All rights reserved.

The company's policy is one of continuous product improvement and the right is reserved to modify the specifications contained herein without notice. These products have been manufactured with current technology and in accordance with applicable AWWA Standards.

IND-OIL-152025/01-14