



COMPACT EXCAVATOR | 8035 ZTS

Operating weight: 8049lbs Net engine power: 30.2 hp / Gross 32.7 hp



PRODUCTIVITY AND PERFORMANCE.

THE 8035 ZTS COMPACT EXCAVATOR OFFERS TRUE ZERO TAILSWING AND RECOGNIZE THE NEED FOR EVER-MORE-COMPACT MACHINES THAT STILL DELIVER SPEED, POWER AND PRODUCTIVITY. YET THEY NEVER COMPROMISE ON EASE OF OPERATION AND CONTROL.



Benchmarked against conventional as well as zero tailswing models, we know from your feedback that this compact machine can more than compete, particularly when it comes to stability and power.

Reliability built in.

- 1** The undercarriage gives optimum protection against site damage. And the sloped track frame helps to prevent dirt build up.
- 2** Excavator hoses are routed on top of the boom to give maximum protection against damage.
- 3** Simple design and durable components ensures reliability is built-in.



Componentry.

- 4** Powerful engine linked to a variable displacement pump provides plenty of digging power. While a two-speed tracking motor, excellent tractive effort and traction.
- 5** Hydraulic system boasts the latest industry technology "O-Ring Face Seal" (ORFS) hydraulic fittings providing excellent sealing capabilities.



PRODUCTIVITY AND PERFORMANCE.

THE 8035 BOASTS A LARGE HP ENGINE TO MATCH THE SIZE OF THE MACHINE, GIVING YOU IMPRESSIVE TEAROUT FORCES, AND HIGH LEVELS OF TRACTIVE EFFORT AND TRACKING SPEEDS.

Power and stability.

6 All machines have excellent digging performance giving impressive tearout forces, and high levels of tractive effort.

7 Stability is key on ZTS machines, so we've paid close attention to the undercarriages of these models, ensuring they give you the safest platform for hard working. The undercarriage dimensions are optimized to ensure good stability both in line and over the sides of the tracks, and to allow for ease of maneuverability and low-effort turns.

8 ZTS offers more maneuverability (especially in confined spaces) because there is no overhang on the tracks.



Dozer.

9 The unique JCB dozer design also features an improved curved profile at the front which forms material into a roll that then keeps moving away from the machine rather than building up and acting as an obstacle. The H-frame undercarriage design (as well as being more rigid) also features lots of slopes and exit points to help ensure material doesn't build up underneath the machine and impede performance.

Undercarriages are matched to the dig envelope for stability and performance.

Hydraulics.

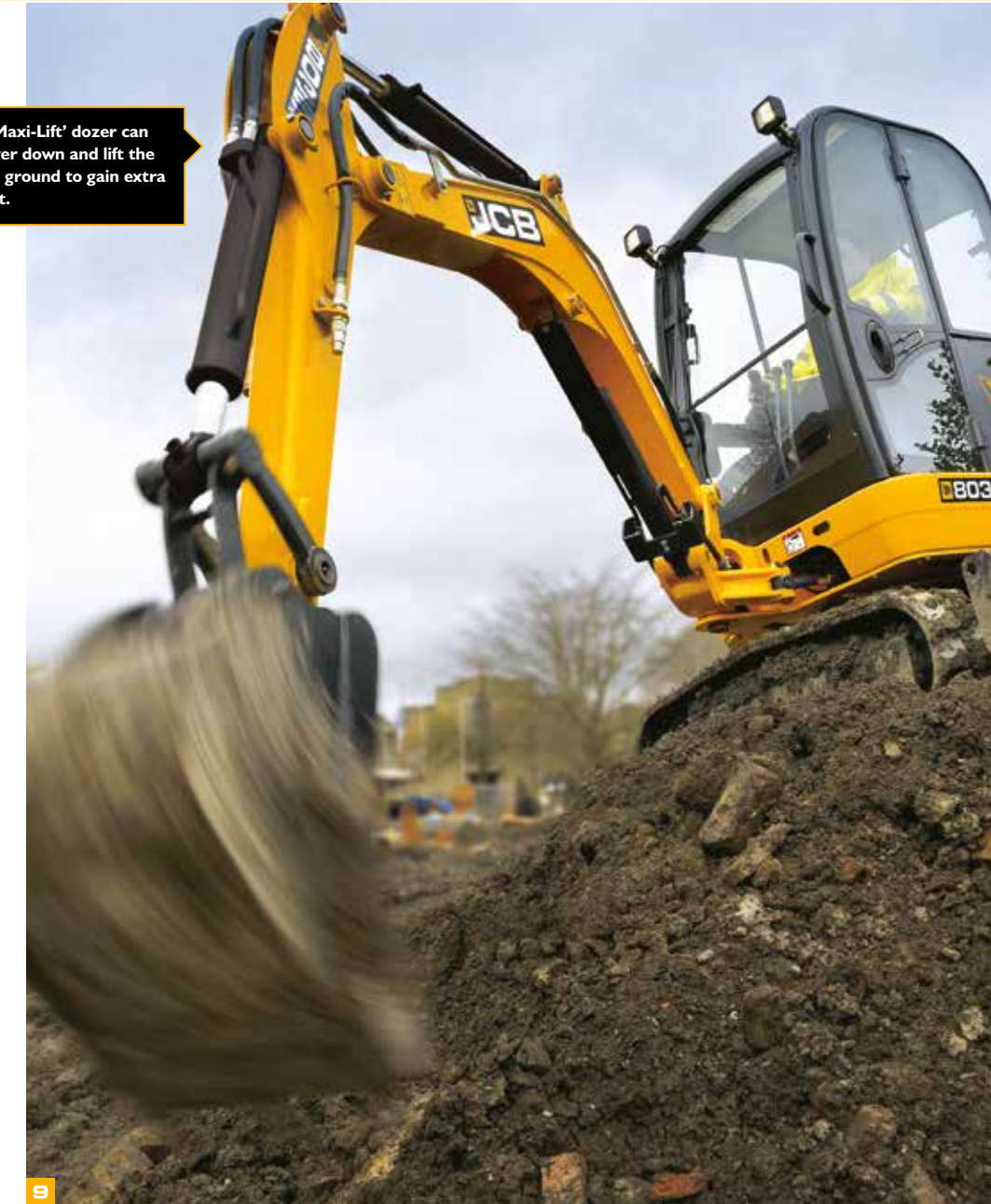
10 A changeover button on the joystick lets you switch the right pedal between auxiliary service and boom offset function. In boom offset mode, you can operate the slew of the upper structure and the boom at the same time, allowing you to get this JCB compact excavator into the correct position straight away. Plus this foot pedal is servo operated for low-effort, precise control.

11 For ready-to-go versatility, all models feature single-acting auxiliary pipework to the dipper as standard for powering breaker attachments.

Double-acting pipework (e.g. for powering earth drills) is also available as an option, allowing you to switch between single and double modes.



The powerful 'Maxi-Lift' dozer can effortlessly power down and lift the machine off the ground to gain extra load over height.



EASE OF OPERATION.

ZERO TAILSWING MODELS ALWAYS HAVE AN ADVANTAGE OVER CONVENTIONAL MODELS WHEN IT COMES TO VISIBILITY. IN FACT, THE SAFETY BENEFITS OF THE ZTS DESIGN MEANS IT IS NOW PREFERRED BY SAFETY OFFICERS. AND IN SOME APPLICATIONS, SUCH AS ON HIGHWAYS WHERE WORKING WITHIN ONE LANE WIDTH IS VITAL, ONLY ZTS MODELS ARE NOW SPECIFIED.

Ease of use.

1 Visibility from the working position is excellent. To the left, you can see the whole track. To the right and the rear, the curving style of hoods on all machines gives an improved view. The hose routing on top of the boom rather than to the side also means there's less to impede visibility, and the large front.

2 Once you are up and running, the efficient heating system allow you to obtain the most comfortable temperature. You can effortlessly store the gas-strut-assisted upper front screen overhead, and the lower front screen can also be removed. Plus, the whole cab structure is isolated from the slew frame for minimum vibration.



2

All machines have short travel joysticks, the most advanced micro technology in the valve block and a variable flow hydraulic pump. These provide the smooth, precise control required by the novice operator, without compromising on the power and speed demanded by professional users.

Good size door width for easy access and the door itself latches back within the tailswing so you can work with it open. To make access even clearer, the left control pod hinges up and we have removed the left foot pedal (a changeover switch on the joystick allows you to control right and left pedal operations with just the right pedal).



1

Better protected.

3 All cabs are ROPS and TOPS compliant with optional Level 1 & 2 FOPS protection. Further optional front screen guards provide peace of mind for operators, whilst boom and optional cab worklight guards protect vulnerable components in hazardous applications.

4 True ZTS design provides greater safety by reducing risk of impact in tight workspaces.

Easy to maintain.

5 Gullwing hoods give easy access to all service points and 500-hour engine oil service intervals.

High levels of engine filtration prevent blockages and stoppages.



5

You can check the oil from ground level, the fuel filter system features a combined sedimentor, filter and primer which allows you to prime the system if it runs out of fuel, and you can change the filter without any extra tools.

The valve block is to the side which makes replacing hoses easier, plus inside the cab a removable plastic floorplate gives clear access to the slew motor, rotary joint and hydraulic valves.

The hoses on the whole compact range are color coded to help you identify the correct one.

6 JCB's undercarriage design with sloping track legs minimises material build-up for easier cleaning.



6



VALUE ADDED.

JCB'S WORLDWIDE CUSTOMER SUPPORT IS FIRST CLASS. WHATEVER YOU NEED AND WHEREVER YOU ARE, WE'LL BE AVAILABLE QUICKLY AND EFFICIENTLY TO HELP MAKE SURE YOUR MACHINERY IS PERFORMING TO ITS FULL POTENTIAL.



1

Our Technical Support Service provides instant access to factory expertise, day or night, while our Finance and Insurance teams are always on hand to provide fast, flexible, competitive quotes.

The global network of JCB Parts Centres is another model of efficiency; with 15 regional bases, we can deliver around 95% of all parts anywhere in the world within 24 hours. Our genuine JCB parts are designed to work in perfect harmony with your machine for optimum performance and productivity.

Note: JCB LIVELINK and JCB Premier Cover may not be available in your region, so please check with your local dealer.

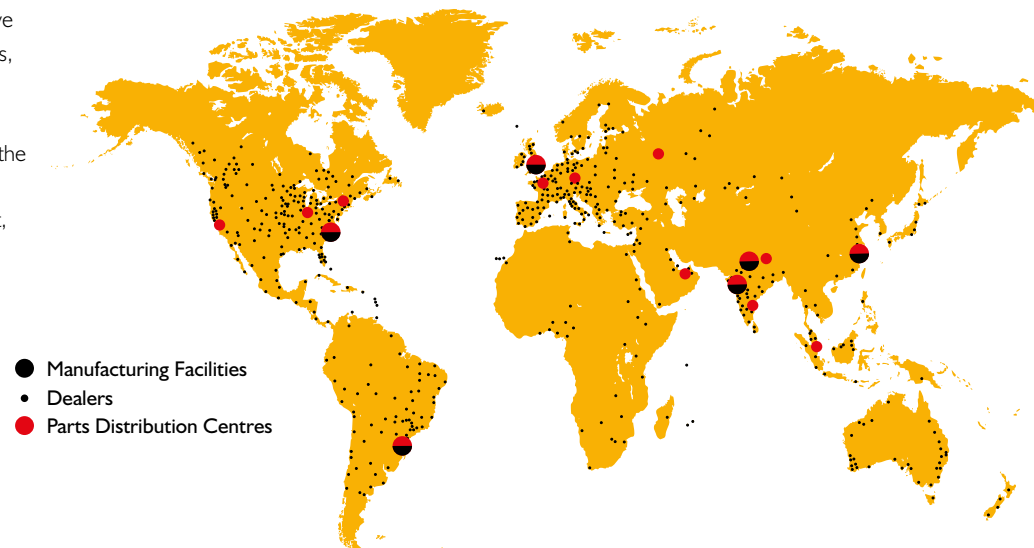


2

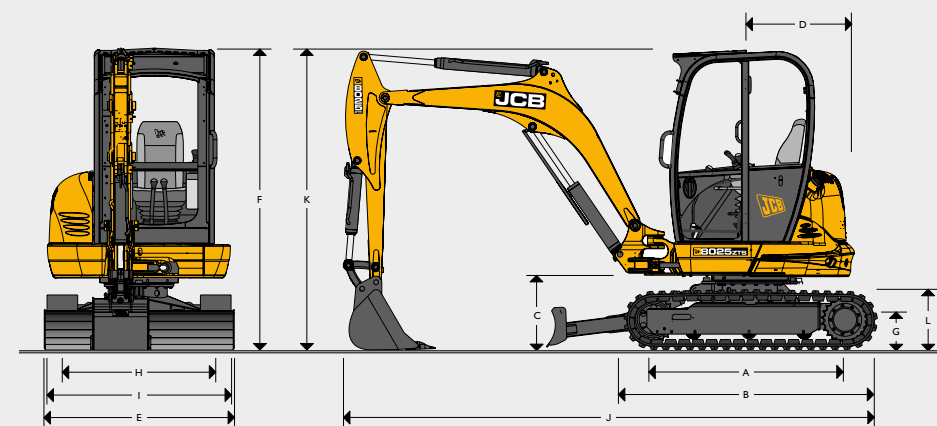
JCB Premier Cover offers comprehensive extended warranties and service agreements, as well as service-only or repair and maintenance contracts. Irrespective of what you opt for, our maintenance teams around the world charge competitive labour rates, and offer non-obligation quotations as well as fast, efficient insurance repair work.



3



STATIC DIMENSIONS



Machine model	8035 ZTS	
A Sprocket idler centres	ft-in	5-2
B Undercarriage overall length	ft-in	6-8
C Kingpost clearance	ft-in	1-8
D Tailswing radius	ft-in	2-9
E Overall width of superstructure	ft-in	5-5
F Height over cab	ft-in	7-11
G Ground clearance	ft-in	0-10
H Track gauge	ft-in	4-9
I Width over tracks	ft-in	5-8
J Transport length	ft-in	14-7
K Transport height	ft-in	7-11
L Track height	ft-in	1-6

ENGINE

Machine model	8035 ZTS	
Model	403D-17 Tier 3	
Fuel	Diesel	
Cooling	Water cooled	
Gross power	hp @ 2200 rpm	31.6
Nett power	hp @ 2200 rpm	30.4
Gross torque	lbf ft @ 1600 rpm	78.4
Nett torque	lbf ft @ 1600 rpm	75.5
Displacement	cc	1663
Gradeability	degrees	36
Starter motor	hp	2.7
Battery	volt/Ah	12/75
Alternator	amp	65

UNDERCARRIAGE

Machine model	8035 ZTS	
No of bottom rollers	4	
Track width	ft-in	0-11
Ground bearing pressure	Kg/cm ²	0.38
Ground clearance	ft-in	0-10
Track tensioning	Grease	
Travel speed – low	mph	1.5
Travel speed – high	mph	2.7
Tractive effort	lbf	7194

HYDRAULIC SYSTEM

Machine model	8035 ZTS	
Pump	2 Variable & 1 Gear	
Nominal output	gpm	29
Excavator/track main relief	psi	3553
Slew main relief	psi	2756
Auxiliary hydraulic flow	gal	18.2
Hydraulic motors	Piston	

WEIGHTS

Machine model	8035 ZTS	
Operating weight*	lbs	8049
With canopy	lbs	7828
With FOGS guard	lbs	8117
With steel tracks	lbs	8203

OPERATOR STATION

Machine model	8035 ZTS	
Cab/canopy height	ft-in	4-11
Cab/canopy length	ft-in	3-11
Cab/canopy height	ft-in	3-2
Door aperture width	ft-in	1-8

SERVICE CAPACITIES

Machine model	8035 ZTS	
Fuel tank	gal	10.6
Engine coolant	gal	2.2
Engine oil	gal	1.2
Hydraulic system	gal	18.5
Hydraulic tank	gal	11.9

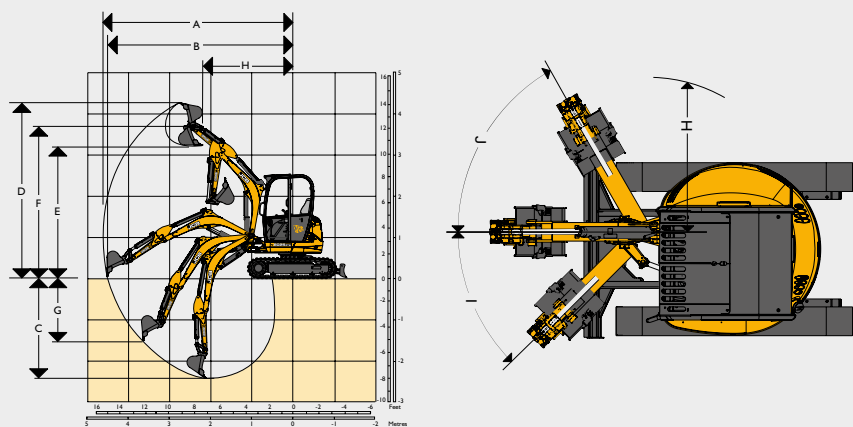
EEC NOISE LEVELS (95/27/EC DYNAMIC)

Machine model	8035 ZTS	
Cab / canopy external	dB (LwA)	95
Cab internal	dB (LpA)	77

STANDARD EQUIPMENT 8035 ZTS	ROPS & TOPS certified canopy, full audio/visual warning systems, slew travel lock, control isolator, lockable toolbox, 12v power socket, lifting points, rubber tracks, ISO servo controls, suspension seat, boom worklight, track pedals, single acting auxiliary circuit, boom ram protection, dozer blade, 1525mm dipper.
------------------------------------	--

OPTIONAL EQUIPMENT 8035 ZTS	ROPS & TOPS certified fully glazed cab (includes heater, interior light, foldback door, gas strut assisted front screen), steel tracks, dual pattern controls (ISO/SAE change-over), cab/canopy mounted worklights, double acting auxiliary circuit, air conditioning, engine fan guard, FOPS roof guard, mirror, toolkit, radio, biodegradeable hydraulic oil, fire extinguisher, sunblind (cab builds), battery isolator, travel alarm, immobilizer, yellow roof moulding, hose burst check valves, boom, dipper and dozer, digging buckets (230mm to 760mm), 1000mm ditching/grading bucket, hydraulic breakers, earthdrill, mechanical quickhitch, hydraulic kerb-lifter, bushed king post.
------------------------------------	---

WORKING RANGE



	8035 ZTS	
Boom length	ft-in	7-7
Dipper length	ft-in	5-0
A Max digging reach	ft-in	17-10
B Max digging reach on ground	ft-in	17-5
C Max digging depth – dozer up	ft-in	10-5
Max digging depth – dozer down	ft-in	11-6
D Max digging height	ft-in	15-1
E Max dump height	ft-in	11-5
F Max height to dipper nose pivot pin	ft-in	13-1
G Max vertical wallcut depth	ft-in	7-1
H Min. front swing radius (no offset)	ft-in	8-2
Min. front swing radius (fully offset)	ft-in	5-4
I Boom swing left	degrees	45
J Boom swing right	degrees	60
Bucket rotation	degrees	186
Dipper rotation	degrees	119
Bucket tearout	lbf	7194
Dipper tearout	lbf	4496
Slew speed	rpm	9.6

DOZER

	8035 ZTS	
Machine model	8035 ZTS	
Max height above ground	ft-in	1-2
Dig depth below ground	ft-in	2-0
Approach angle	degrees	24.5
Width	ft-in	5-8
Height	ft-in	1-1
Reach in front of tracks	ft-in	2-2

LIFT CAPACITIES – STANDARD DOZER, 300MM RUBBER TRACKS, 1525MM DIPPER, NO BUCKET

Load Point	2.5m			3.0m			3.5m			4.0m			Capacity at maximum reach			
Height	Dozer Up	Dozer Down	Over Side	Dozer Up	Dozer Down	Over Side	Dozer Up	Dozer Down	Over Side	Dozer Up	Dozer Down	Over Side	Dozer Up	Dozer Down	Over Side	Distance
ft-in	lbs	lbs	lbs	lbs	lbs	lbs	lbs	lbs	lbs	lbs	lbs	lbs	lbs	lbs	lbs	ft-in
6'7"				1307	1345	1380	1274	1360	1336	860	1373	950	694	1314	728	14.8
4'11"	2103	2273	2196	1360	1865	1490	1080	1664	1151	851	1537	913	689	1473	694	15.1
3'3"	1764	3012	1865	1336	2339	1354	1025	1936	1071	855	1882	897	675	1567	677	15.1
1'7"	1587	3481	1764	1177	2657	1402	1049	2196	1060	809	1872	875	694	1664	690	15.1
0	1455	3702	1735	1166	3183	1332	966	2350	1065	796	1947	851	664	1631	1151	14.8
1'7"	1507	3977	1673	1224	3232	1272	983	2480	1047	833	2033	860	743	1806	743	14.4
3'3"	1523	3732	1702	1100	2912	1290	884	2463	1060	796	2061	880	798	1894	849	13.2



Lift capacity front and rear.



Lift capacity full circle.

Notes:

- Lifting capacities are based on ISO 10567, that is: 75% of minimum tipping load or 87% of hydraulic lift capacity, whichever is the less. Lifting capacities marked* are based on hydraulic capacity.
- Lift capacities assume that the machine is on firm level ground and equipped with an approved lifting point.
- A bucket must be fitted when lifting, the weight of this bucket must be deducted from the above lift capacities.
- Lift capacities may be limited by local regulations. Please refer to your dealer.



ONE COMPANY, OVER 300 MACHINES.

Compact Excavator 8035 ZTS

Operating weight: 8049lbs Net engine power: 32.7hp / 30.2hp

JCB North American – Headquarters

Savannah, 2000 Bamford Blvd., Savannah, Georgia, 31322 Tel: (912) 447-2000

Download the very latest information on this product range at www.jcb.com

JCB inc. All rights reserved. No part of this publication may be reproduced, stored in a retrieval system, or transmitted in any form or by any other means, electronic, mechanical, photocopying or otherwise, without prior permission from JCB inc. All references in this publication to operating weights, sizes, capacities and other performance measurements are provided for guidance only and may vary dependant upon the exact specification of machine. They should not therefore be relied upon in relation to suitability for a particular application. Guidance and advice should always be sought from your JCB Dealer. JCB reserves the right to change specifications without notice. Illustrations and specifications shown may include optional equipment and accessories. The JCB logo is a registered trademark of J C Bamford Excavators Ltd.

Your nearest JCB Dealer

