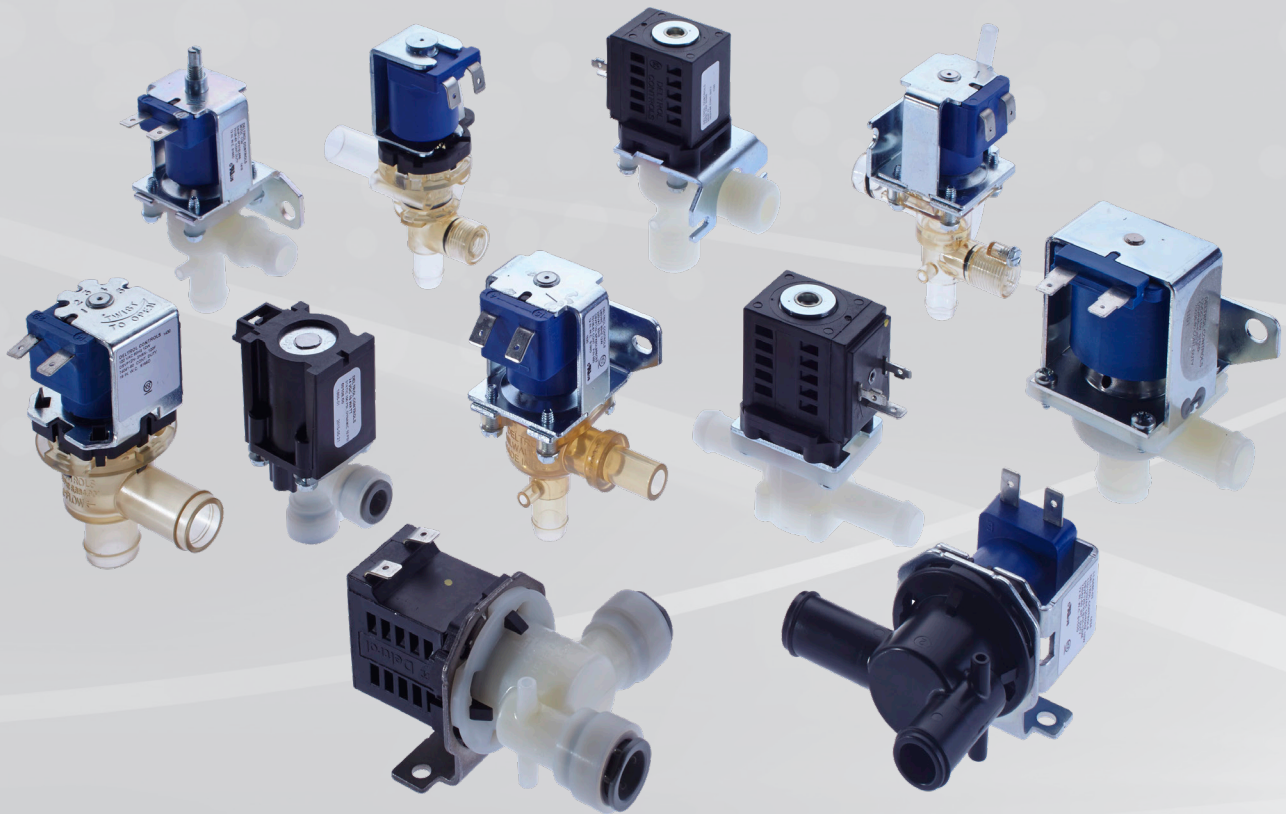


Dispensing Valves



A Leader in the Design & Manufacture of Advanced Electromechanical Products

www.deltrol-controls.com

ISO 9001:2015 Certified

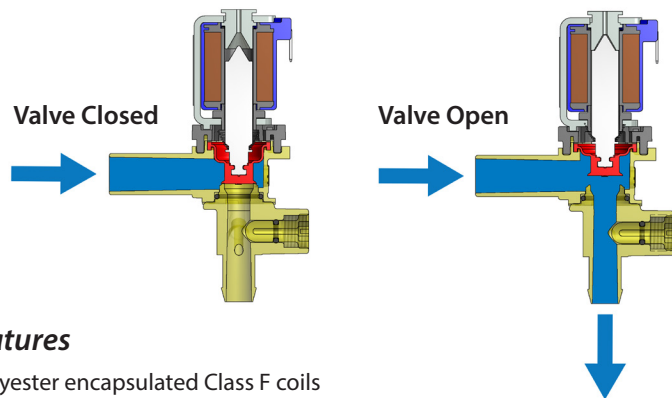
Dispensing Valves

Product Description

Deltrol Controls Liquid Dispensing Valves are direct-acting, gravity fed (up to 3 psi) valves primarily designed to dispense water (up to 210°F) or similar media from a tank. The most common applications for our valves are hot beverage and vending equipment, ice machines, and floor scrubbers. Deltrol Controls offers 5 types of Liquid Dispensing Valves, each providing unique features for your application. Each of these valves is briefly described in this brochure, and complete product information can be obtained by visiting our website at www.deltrol-controls.com.

Principle of Operation

The following illustration shows a common Liquid Dispensing Valve. A water source is typically connected to the inlet port of the valve and the valve controls the flow of fluid to the outlet port. In the closed position, the diaphragm is biased against a valve seat by a spring, preventing water flow. When power is applied to the coil, the plunger and diaphragm move away from the valve seat, allowing liquid to pass through the valve.

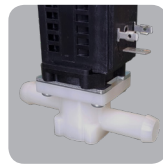
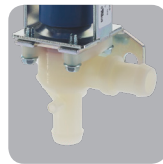


Features

- Polyester encapsulated Class F coils
- Standard coil termination: 0.25" X 0.03" male quick connect terminals
Termination options for DSVP11 and DSVP12 models include: Lead wires, DIN 43650 Form A, and Deutsch DT04-2P
- UL recognition (US and Canada) for most models
- NSF listing on most valves with silicone diaphragms
- ENEC Certification on select DSVP12(N) and DSVP15 models
- Optional QF "Quiet Flow" coil for quiet AC operated valves (not available on all models) [1]
- Optional vent tube available on select models to allow for full release of outlet media
- Life expectancy: 125,000 cycles under normal conditions
- Multiple inlet and outlet configurations available – special designs may be available upon request
- Multiple material options available to suit your specific application

Valve Body Options

DSVP11



DSVP12



RoHS Compliance

This product is compliant with RoHS Directive (2002/95/EC) and RoHS Recast (2011/65/EU). This declaration is based on a combination of supplier declarations and testing to EN 62321

[1] AC coils that are internally rectified may require protection from transient voltages. It is recommended that a metal-oxide varistor (MOV) be placed in parallel at the coil.

[2] The CE Mark on Deltrol components indicates that the component is designed for use in a product required to comply with CE marking directives; certification to the LVD directive is only practical once the component is fully integrated into a finished product under the scope of either directive.

General Description

All are 2-way, direct acting dry plunger valves

Electrical Specifications

Coil Voltages

Internally rectified AC Coils [1]

Coil Powers

Coil Termination

Duty Cycle

Normal Ambient Temp

Coil Treatment

Insulation Class

Mechanical Specifications

Media

Max. Head Pressure

Max. Flow Rate @ 4" w.c.
(water @ 73° F)

Max Flow Rate 12" w.c.
(water @ 73°F)

Inlet/Outlet Connection

Bracket Options

Optional Vent Tube

Normally Open Version Option

Flow Adjuster Option

Valve Body Material

Diaphragm Material

Weight

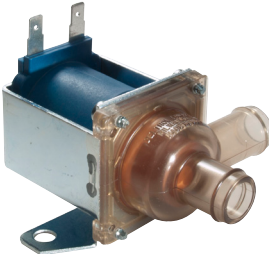




Agency Approvals [*]

NSF

UR & cUR

Other

US Patent No.

DSVP10(N)	DSVP11(N)	DSVP12(N)	DSVP14(N)	DSVP15(N)
				
Our largest valve, designed for large capacity flow requirements	Multiple port and bracket options to suit your application	Modular design for on-the-spot configuration, high relative sealing ability	This valve provides superior flow and an easy-to-use flow rate adjuster integral to the valve body	State-of-the-art fastener-less design, excellent flow and consistency
24,120, 240 VAC, 50/60 HZ 12, 24, 36 VDC	24,120, 240 VAC, 50/60 HZ 12, 24, 36 VDC	24,120, 240 VAC, 50/60 HZ 12, 24, 36 VDC	24,120, 240 VAC, 50/60 HZ 12, 24, 36 VDC	24, 100, 120, 200, 240 VAC 50/60 HZ, 12, 24, 36 VDC
No	Yes	Yes/ Non-rectified version available	Yes	Yes
30 W (standard)	12 W (AC), 11 W DC (standard)	12 W (AC), 11 W DC (standard)	12 W (AC), 11 W DC (standard)	14 W (AC), 12 W (DC) (standard)
0.25" spade terminals	0.25" spade terminals (standard) Lead Wires DIN 43650 Form A Deutsch DT04-2P	0.25" spade terminals (standard) Lead Wires DIN 43650 Form A Deutsch DT04-2P	0.25" spade terminals	0.25" spade terminals
Intermittent (standard)	Continuous (standard)	Continuous (standard)	Continuous (standard)	Intermittent 50%, 1 minute on
95° F (35° C)	95° F (35° C)	77° F (25° C)	95° F (35° C)	113° F (45° C)
Polyester Encapsulated	Polyester Encapsulated	Polyester Encapsulated	Polyester Encapsulated	Polyester Encapsulated
Class F 311° F (155°C)	Class F 311° F (155°C)	Class F 311° F (155°C)	Class F 311° F (155°C)	Class F 311° F (155°C)
Water and Water-Based Solutions up to 210° F (98° C) Polysulfone Body up to 170°F (77° C) Nylon Body	Water and Water-Based Solutions up to 210° F (98° C) Polysulfone Body up to 170°F (77° C) Nylon Body	Water and Water-Based Solutions up to 210° F (98° C) Polysulfone Body up to 170°F (77° C) Nylon/Noryl® Body	Water and Water-Based Solutions up to 210° F (98° C)	Water and Water-Based Solutions up to 210° F (98° C)
18"W.C. Standard, up to 40" optional	12"W.C. Standard, up to 72" optional	30"W.C. Standard, up to 72" optional	12"W.C. Standard, up to 72" optional	24"W.C. Standard (0-60) mbar
3.6 fl oz/sec	1.5 fl oz/sec (0.302 valve seat) 1.9 fl oz/sec (0.406 valve seat)	1.1 fl oz/sec (#5 valve body) 1.8 fl oz/sec (#2 valve body)	1.6 fl oz/sec (standard version) 1.75 fl oz/sec (high flow version)	1.7 fl oz/sec
5.8 fl oz/sec	2.5 fl oz/sec (0.302 valve seat) 3.3 fl oz/sec (0.406 valve seat)	2.0 fl oz/sec (#5 valve body) 3.0 fl oz/sec (#2 valve body)	2.5 fl oz/sec (standard version) 2.8 fl oz/sec (high flow version)	2.7 fl oz/sec
Ø0.77 barb/ Ø0.77 barb	Ø0.62 OD with O-ring/ Ø0.63 or Ø0.50 barb 1/4-18 NPTF / Ø0.63 or Ø0.50 barb Ø.47 or Ø.53 OD/ Ø0.50 barb Ø0.63 barb / Ø0.63 barb G1/2-14 thread / G1/2-14 thread Ø0.57 barb / Ø0.57 barb inline	Ø0.47 OD / Ø0.50 barb Ø0.67 barb / Ø0.69 barb Ø0.75 barb / Ø0.69 barb	Ø.62 OD with O-ring / Ø0.51 barb	Ø.50 OD for grommet seal / Ø.50 barb Ø.59 OD for grommet seal / Ø.50 barb
Available in 90° increments See website for details	Available in 90° increments See website for details	Available in 90° increments See website for details	Available in 90° increments See website for details	None
No	Yes	Yes	Yes	Yes
Yes - DC only	Yes	No	Yes	No
Yes - Backstop Adjuster	Yes - Backstop Adjuster	No	Yes - integral to valve body	Yes - integral to valve body
Polysulfone, Nylon	Polysulfone, Nylon	Noryl®, Polysulfone, Nylon	Polysulfone	Polysulfone
Silicone, Viton®, EP	Silicone, Viton®, EP, EPDM	Silicone, Viton®	Silicone	Silicone
14 oz.	8 oz.	7.5 oz.	7.6 oz.	5.5 oz
NSF-169 listed on most valves with silicone diaphragms	NSF-169 listed on most valves with silicone diaphragms	NSF-169 listed on most valves with silicone diaphragms	NSF-169 listed on most valves with silicone diaphragms	NSF-169 listed on most valves with silicone diaphragms
File No. MH12958	File No. MH12958	File No. MH12958	File No. MH12958	File No. MH12958
		6,684,901		7,938,383

(*) Approvals do not apply to all valves. Contact the factory for specific approvals.
VITON® is a registered trademark of DuPont NORYL® is a registered trademark of SABIC.

Specifications subject to change without notice.

MARKETS SERVED

Beverage
Welding Equipment
Vending

Ice Machines
Medical Equipment
HVAC

Floor Scrubbers
Fluid Power
Power Inverters

Deltrol Controls Products

Deltrol Controls designs and manufactures dispensing valves, inlet valves, proportional valves, 2-way pressure valves, solenoids, relays, hose sets and fittings, and custom assemblies. We offer an extensive line of standard products and have an in-house engineering staff that will work with you to design a custom product specific to your application.

Please visit www.deltrol-controls.com for further information.

Deltrol Controls Overview

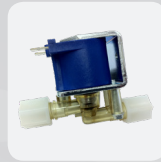
Deltrol Controls is located in Milwaukee, Wisconsin USA and is a wholly-owned subsidiary of Deltrol Corp. For over 50 years, we have designed and manufactured valves, solenoids, relays, and custom assemblies for a variety of applications. Our Milwaukee operation employs approximately 125 employees, working out of a 110,000 sq. ft. ISO 9001:2015 Registered manufacturing facility. We also have manufacturing capabilities in other parts of the world that allow us to be a globally competitive supplier.



Dispensing Valves



Inlet Valves



Proportional Valves



2-Way Pressure Valves



Relays



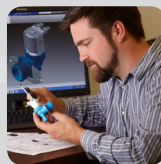
Solenoids



Hose Sets



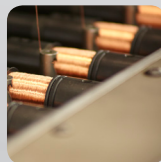
Custom Assemblies



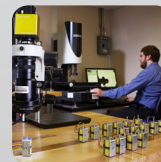
***Custom Product Engineering/
Manufacturing***



On-Site Product Testing



Product Manufacturing



Quality Control



A Leader in the Design & Manufacture of Advanced Electromechanical Products

2740 S. 20th St. Milwaukee, WI 53215 USA | P: 414.671.6800 | F: 414.671.6809 | sales@deltrol.com | www.deltrol-controls.com