



Features

- Excellent color rendering (93+ CRI)
- 3000K Warm White LED light
- Lumen output up to 400Lm
- Dimmable with most TRIAC, CL, or ELV dimmers
- Remote driver with hardwire junction box
- Spring loaded mounting clips
- Type IC and cETLus Listed for wet locations
- 35,000 hours rated life
- ENERGY STAR pending

Available Finishes



White

Dimming Options

- TRIAC (10-100%)
- CL (10-100%)
- ELV (10-100%)

Listing / Ratings



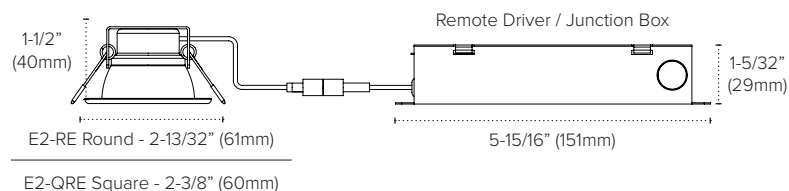
EPIQ DIRECT 2 Downlight

Available in round or square, the new 2" EPIQ Direct installs without a recessed can. The driver is housed remotely in a 120V wiring box, instead of on the back of the downlight, so the clearance height needed is only 1-1/2". EPIQ Directs ship with remote driver/junction box, interconnecting cables and cut-out template.

Technical Information

Series	E2-RE
Input Voltage	120V AC, 60Hz
CCT	3000K
CRI	93+
Wattage	5.5W
Lumens	400Lm
Beam Angle	42°
Dimmable	10-100%*
Mounting	Recessed mount (E2-RE 2" / E2-QRE 1-15/16" Cut-out)
Rating	cETLus Listed; Type IC; Suitable for wet locations
Rated Life	35,000 hrs

*Minimum loads may apply



EPIQ DIRECT 2 Round Downlight



Epiq Direct 2 Round - White Multiplier

E2-RE-30-WH

120V AC / 3000K / 400Lm / 5.5W

EPIQ DIRECT 2 Square Downlight

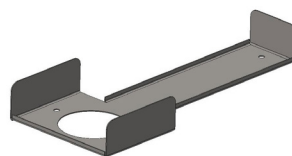


Epiq Direct 2 Square - White Multiplier

E2-QRE-30-WH

120V AC / 3000K / 400Lm / 5.5W

EPIQ DIRECT 2 Accessories



2" Retrofit Mounting Plate

RP-E2 2" Round

RP-E2-Q 2" Square