

ACCESSORIES LIGHT STRING CLIPS



PREMIUM SHINGLE TAB



PART NUMBER

39001-PREM

- Slides under shingles to hold bulbs to roofline; Use with 39007-PREM for flat surface installs
- 3 socket diameter choices hold multiple socket sizes
- Allows installation of bulb without removal from socket
- High quality resin with UV stabilizers
- Sold in cases of 500



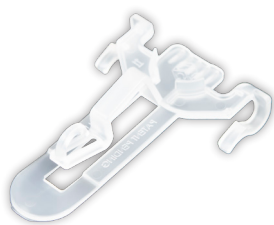
PREMIUM P-CLIP



PART NUMBER

39007-PREM

- Use with 39001-PREM for flat surface installs
- Mount with screws or silicon glue, perforated holes for better adhesion with glue
- Notches on clip match up with indentation on shingle tab to eliminate rotation
- High quality resin with UV stabilizers
- Sold in cases of 500



PREMIUM MULTI-CLIP



PART NUMBER

MULTI-CLIP-PREM

- Shingle or gutter mounting accessory for flat-based light sockets
- Utility hook holds icicle lights from rain gutters
- Wire guides attach clip to wire allowing for quick take-down without clip separating from cord
- High quality resin with UV stabilizers
- Sold in cases of 500



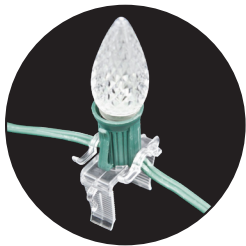
PREMIUM OMNI CLIP



PART NUMBER

OMNICLIP-PREM

- Popular shingle or gutter clamp mounting accessory for mini lights, icicle lights, C7s, and C9s
- Arms of clip roll over to form pinchers for mini, icicle, or smaller based lights
- High quality resin with UV stabilizers
- Sold in cases of 500



PREMIUM U-CLIP



PART NUMBER

U-CLIP-PREM

- 2" U-shaped mounting accessory for deck railing, open fascia boards, or other 2" frames
- Orients and holds C7 and C9 sets; can also be used to hold any wire in place
- Additional utility hook for hanging icicle lights or garland
- High quality resin with UV stabilizers
- Sold in cases of 500



PREMIUM LAWN STAKE

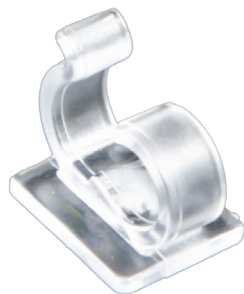


PART NUMBER

39021-PREM 5"

39022-PREM 10"

- Mounting accessory for lining sidewalks and driveways
- Glass-filled nylon for a rigid, durable design
- Speed ratchet head saves time by seating C7 or C9 socket and twisting it into place
- Sold in cases of 500



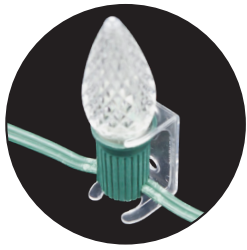
PREMIUM MINI LIGHT CLIP



PART NUMBER

39095-PREM

- Attaches mini lights to windows or other solid surfaces
- Two size diameters accommodate incandescent or LED mini lights
- 3M adhesive pads for consistent hold
- High quality resin with UV stabilizers
- Sold in cases of 1,000



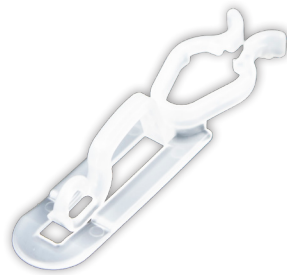
C-CLIP



PART NUMBER

39006

- Hard plastic clip used to mount C7s and C9s to rooflines, under eaves, or where other clips cannot be used
- Mount with screws or silicone glue
- Sold in bags of 100 or cases of 2000



ALL-IN-ONE CLIP



PART NUMBER

39032

- Slides under shingles or clamp to gutter to hold mini lights, C7s, and C9s
- Arms of clip roll over to form pinchers for mini, icicle, or smaller based lights
- Utility hook holds icicle lights from rain gutters
- Sold in bags of 100 or cases of 2000



ICICLE LIGHT CLIP



PART NUMBER

39303

- Exclusively used to attach icicle lights to rooflines
- Clip either slides under shingles or clamps to a gutter via a utility hook
- Sold in bags of 100 or cases of 2000