

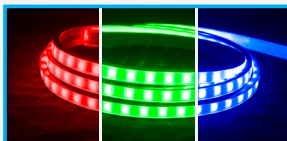
LINEAR ACCENT



Hybrid 2 Kits & Reels

p. 70-71

High lumen output available in kits or reels



Hybrid 2 RGB

p. 72-73

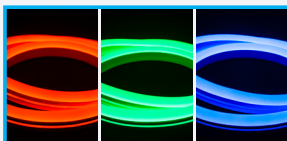
Reliable and dynamic ETL listed linear RGB light



Polar 2 Neon Reels

p. 74-75

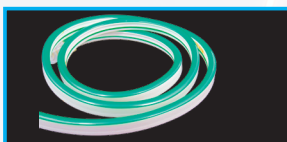
Heavy-duty linear lighting great for outdoor applications



Polar 2 RGB Neon

p. 76-77

Take the Polar 2 Neon to the next level with color-changing options and optional Wifi-App control



Polar 2 Mini Neon

p. 78-79

Same great Polar 2 Neon in smaller, compact dimensions



LED Rope Light Kits

p. 80-81

Save energy over incandescent 1/2" and 3/8" rope with improved LED rope light



LED Rope Light Reels

p. 82-83

Save energy over incandescent 1/2" and 3/8" rope with improved LED rope light



Incandescent Rope Light

p. 84-85

Economical 1/2" and 3/8" rope light in multiple colors

HYBRID 2 KITS & REELS



Hybrid 2 Kits & Reels

- 120° beam angle provides even light distribution
- Flexible rubber housing with clear PVC lens are protected with UV inhibitor
- Parallel wiring to each LED ensures that if one LED goes out, the rest of the cutting increment stays lit
- 5050 SMD LEDs emit up to 230 lumens per foot
- Clips, clear plastic track, or aluminum channel available for a variety of mounting purposes including coves and ledges

Specifications: Hybrid 2 Kits

Series	H2-KIT
Input voltage	120V AC, 60Hz
Colors	WW/WH
Lumens	See individual product
Wattage	2.3W/ft
Kit length	3ft / 6ft / 12ft / 18ft / 30ft / 45ft
Dimensions	9/16"W x 1/4"H
Maximum run	150ft
Cuttability	N/A
Dimming	10-100%*
Rating	cETLus, Indoor/outdoor; IP65
Rated life	30,000 hours

*With most incandescent, low-voltage magnetic, and low-voltage electronic dimmers (minimum loads may apply). Per the NEC, switched wall outlets cannot be used with wall dimmers.

*cETLus Listing is void if product is cut

Specifications: Hybrid 2 Reels

Series	120-H2
Input voltage	120V AC, 60Hz
Colors	WW/WH
Lumens	See individual product
Wattage	2.3W/ft
Reel length	150ft
Dimensions	9/16"W x 1/4"H
Maximum run	150ft
Cuttability	18"†
Dimming	10-100%*
Rating	cETLus, indoor/outdoor; IP65
Rated life	30,000 hours

*With most incandescent, low-voltage magnetic, and low-voltage electronic dimmers (minimum loads may apply). Per the NEC, switched wall outlets cannot be used with wall dimmers.

†cETLus Listing is void if product is cut

HYBRID 2 KITS



H2-KIT-3-WW 3ft length, 9W
H2-KIT-6-WW 6ft length, 18W
H2-KIT-12-WW 12ft length, 36W
H2-KIT-18-WW 18ft length, 54W
H2-KIT-30-WW 30ft length, 90W
H2-KIT-45-WW 45ft length, 135W
 2700K Warm White LEDs
 120V, 82 CRI, 145Lm/ft



H2-KIT-3-WH 3ft length, 9W
H2-KIT-6-WH 6ft length, 18W
H2-KIT-12-WH 12ft length, 36W
H2-KIT-18-WH 18ft length, 54W
H2-KIT-30-WH 30ft length, 90W
H2-KIT-45-WH 45ft length, 135W
 5000K Bright White LEDs
 120V, 82 CRI, 180Lm/ft

Hybrid 2 Kits include (1) Length of Hybrid 2 with molded male/female connectors, (1) 5ft Removable power cord, (1) Removable end cap, (1) Clear plastic mounting clip per foot of length

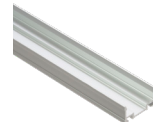
HYBRID 2 KIT ACCESSORIES



H2-KIT-JUMP.5 6"
H2-KIT-JUMP3 3ft
H2-KIT-JUMP6 6ft
 Twist-on Linking Cable



H2-TRACK-3
 3ft Clear plastic mounting track
 23/32" w x 13/32" h

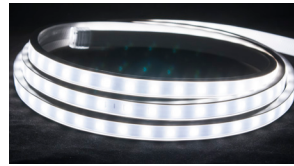


H2-CHAN-3
 3ft Aluminum mounting channel
 23/32" w x 13/32" h

HYBRID 2 REELS



150ft reel • 2700K Warm White LEDs
120-H2-WW (120V) 82CRI • 145Lm/ft



150ft reel • 5000K Bright White LEDs
120-H2-WH (120V) 82CRI • 180Lm/ft

120V Hybrid 2 Bulk Reels Include: (1) 150ft reel of Hybrid 2, (1) Attached H2-CONKIT-8A, (4) H2-CONKIT-8A, (1) Removable end cap, (50) mounting clips with screws

HYBRID 2 REEL ACCESSORIES



H2-CONKIT-8A
 120V Power Connection Kit
 (1) 5ft Plug-in power cord with fused plug and 8A inverter, (1) power pin, (2) 4" pieces of shrink tube, and (1) end cap



H2-SPL
 Splice Kit
 (1) connection sleeve assembly,
 (2) power pins and
 (2) 4" sections of shrink tube



H2-JUMP.5 6"
H2-JUMP3 3ft
H2-JUMP6 6ft
H2-JUMP10 10ft
 Splice Linking Cable
 (2) pin connectors and
 (2) 4" sections of shrink tube



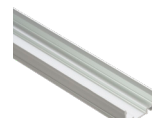
H2-ENDS
 (10) Clear plastic end caps



H2-CLIPS
 (10) Clear plastic mounting clips with (20) screws



H2-TRACK-3
 3ft Clear plastic mounting track
 23/32" w x 13/32" h



H2-CHAN-3
 3ft Aluminum mounting channel
 23/32" w x 13/32" h

HYBRID 2 RGB



Hybrid 2 RGB

- Available in four inter-connectable lengths
- 3-in-1 5050 RGB LEDs every 0.6" create bright and dynamic effect lighting
- 120V system consumes up to 2.7 watts per foot and maximized run distance (150ft max run)
- cETLus Listed*
- Suitable for indoor use and limited outdoor use in areas protected from extreme weather
- 20,000 hours rated life

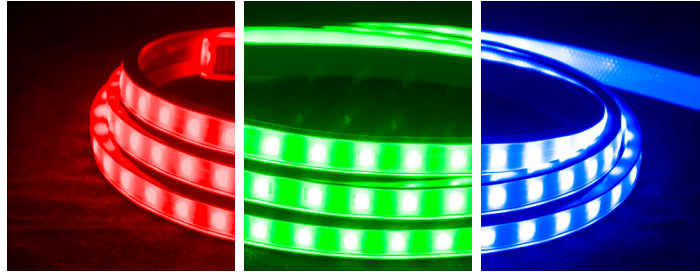
Specifications: Hybrid 2 RGB

Series	RGB-H2
Input voltage	120V AC, 60Hz
Colors	RGB
Lumens	N/A
Wattage	2.7W/ft
Lengths	3ft / 12ft / 30ft / 45ft
Dimensions	11/16"W x 5/16"H
Maximum run	150ft
Cuttability	N/A
Dimming	RGB/DMX/RF Control
Rating	cETLus, Indoor/outdoor; IP65
Rated life	20,000 hours

*With most incandescent, low-voltage magnetic, and low-voltage electronic dimmers (minimum loads may apply). Per the NEC, switched wall outlets cannot be used with wall dimmers.

†cETLus Listing is void if product is cut

HYBRID 2 RGB EXTENDABLE LINEAR LIGHT



RGB-H2-EXT-3 3ft length, 8.1W
RGB-H2-EXT-12 12ft length, 32.4W
RGB-H2-EXT-30 30ft length, 81W
RGB-H2-EXT-45 45ft length, 121.5W
 RGB LEDs • 120V AC, 60Hz

Hybrid 2 RGB Lengths include (1) Length of Hybrid 2 RGB with molded male/female connectors,
 (1) Removable end cap, (1) Clear plastic mounting clip per foot of length

HYBRID 2 RGB ACCESSORIES



RGB-H2-CTRL

Standalone Controller
 (Required for operation)
 Non-rated; IP67; Also required
 for DMX 512 operation



RGB-H2-REC-RF

RF Receiver
 (For RF Control)
 Non-rated; Requires Trulux RF
 Controller with RGB-H2-CTRL



RGB-H2-IR-5A

IR Controller
 (120V / Up to 150ft)
 cETLus Listed, Indoor/Outdoor;
 Incl. remote and 5ft power cord



RGB-H2-CLIPS-AL

Mounting Clips
 (10) Aluminum clips
 with (20) screws



RGB-H2-CHAN-3 (3ft)

Mounting Channel
 Aluminum



DMX-RGB-3

3-Channel DMX Controller
 5ft 120V AC power cord
 plus adapter; Nine color presets



RGB-H2-XLR3-PT

XLR3 Adapter
 Auxiliary DMX controller cable
 for RGB-H2-CTRL



RGB-H2-CTRL-EC15 (15ft)

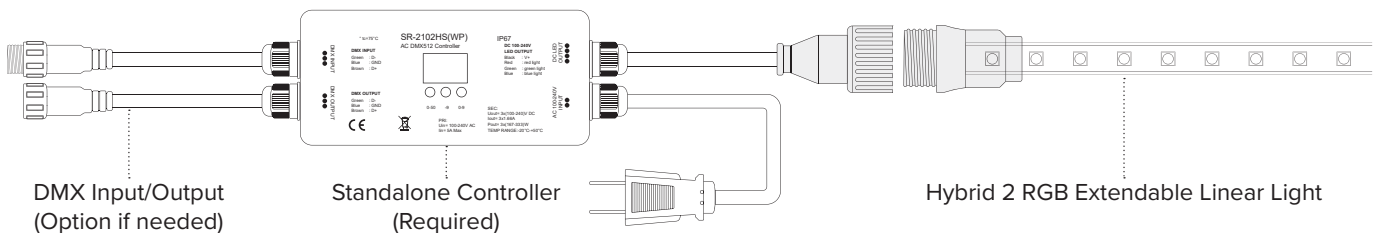
Signal Linking Cable
 Interconnectable
 Link multiple RGB-H2-CTRL units



RGB-H2-EXT-JUMP.5 (6") RGB-H2-EXT-JUMP3 (3ft) RGB-H2-EXT-JUMP10 (10ft) RGB-H2-EXT-JUMP20 (20ft)

Twist-on Linking Cables
 Interconnectable between
 lighted sections

HYBRID 2 RGB BASIC SET UP



POLAR 2 NEON REELS



Polar 2 Neon Reels

- 1/3" LED spacing and opaque, colored jacket provides a uniform appearance for direct-view applications
- 120° beam angle provides a strong line of light
- Flexible rubber housing with frosted or colored PVC lens is protected with UV inhibitor
- Parallel wiring to each LED ensures that if one LED goes out, the rest of the cutting increment stays lit
- 3528 SMD LEDs emit up to 90 lumens per foot
- Clips, plastic track, or aluminum channel available for a variety of mounting purposes including coves and ledges
- Sold as 150ft reels or "by the foot"†

Specifications:

Series	P2-NF
Input voltage	120V AC, 60Hz or 24V DC
Colors	WW/WH/AY/BL/GR/OR/PI/RE
Lumens	See individual product
Wattage	2.4W/ft (120V) or 2.8W/ft (24V)
Reel length	150ft
Dimensions	5/8"W x 1-1/8"H
Maximum run	150ft (120V) or 65ft (24V)
Cuttability	18" (120V) or 12" (24V)†
Dimming	10-100%*
Rating	cETLus, Indoor/outdoor; IP65
Rated life	30,000 hours

*With most standard, low-voltage magnetic, and low-voltage electronic dimmers (minimum loads may apply). Per the NEC, switched wall outlets cannot be used with wall dimmers.

†cETLus Listing for 120V is void if product is cut; cETLus Listing for 24V is valid for lengths cut to 65 feet or less

POLAR 2 NEON REELS



2700K Warm White LEDs
Opaque White Jacket
(120V) 79CRI • 63Lm/ft
(24V) 79CRI • 90Lm/ft
P2-NF-WW (120V)
P2-NF-24V-WW (24V)



5000K Bright White LEDs
Opaque White Jacket
(120V) 78CRI • 63Lm/ft
(24V) 78CRI • 90Lm/ft
P2-NF-WH (120V)
P2-NF-24V-WH (24V)



Amber LEDs
Opaque Yellow Jacket
(120V) 590nm • 21Lm/ft
P2-NF-AY (120V)



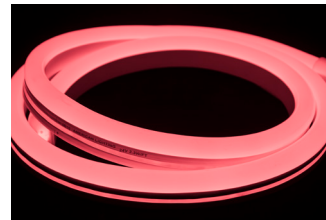
Blue LEDs
Opaque Blue Jacket
(120V) 469nm • 5Lm/ft
P2-NF-BL (120V)



Green LEDs
Opaque Green Jacket
(120V) 520nm • 25Lm/ft
P2-NF-GR (120V)



Orange LEDs
Opaque Amber Jacket
(120V) 606nm • 12Lm/ft
P2-NF-OR (120V)



Pink LEDs
Opaque White Jacket
(120V) 610nm • 17Lm/ft
P2-NF-PI (120V)



Red LEDs
Opaque Red Jacket
(120V) 619nm • 5Lm/ft
P2-NF-RE (120V)

120V Polar 2 Neon Reels include (1) 150ft reel of Polar 2 Neon, (1) Attached P2-NF-CONKIT-8A, (4) P2-NF-CONKIT-8A, (1) End cap on dead end
24V Polar 2 Neon Reels include (1) 150ft reel of Polar 2 Neon, (1) Attached P2-NF-CONKIT-NP (4) P2-NF-CONKIT-NP, (1) End cap on dead end

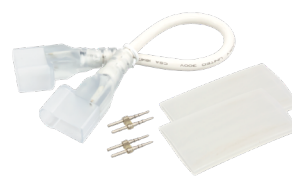
POLAR 2 NEON REELS ACCESSORIES



P2-NF-CONKIT-8A
120V Power Connection Kit
(1) 5ft Plug-in power cord with fused plug and 8A inverter, (1) power pin, (2) 4" pieces of shrink tube, and (1) end cap



P2-NF-CONKIT-NP
24V Power Connection Kit
(1) 5ft power cord (without plug, without inverter), (1) power pin, (2) 4" sections of shrink tube and (1) end cap



P2-NF-JUMP.5 6"
P2-NF-JUMP3 3ft
P2-NF-JUMP10 10ft
Splice Linking Cable
Includes: (2) power pins and (2) 4" sections of shrink tube



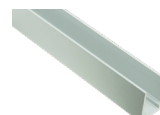
P2-NF-INVS
Invisible Splice Kit
(10) splice pins and (20) 4" section of shrink tube



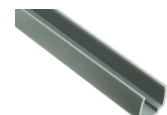
P2-NF-ENDS
(10) Clear plastic end caps



P2-NF-CLIPS
(10) 2" Aluminum mounting clips with (20) screws



P2-NF-CHAN-3
3ft Aluminum mounting channel
23/32"w x 25/32"h



P2-NF-TRACK-3
3ft Plastic mounting track
23/32"w x 13/32"h

POLAR 2 RGB NEON



Polar 2 RGB Neon

- 3-in-1 5050 SMD LEDs with 0.33" spacing provides a strong line of light
- Opaque PVC jacket with a white PVC backing create a 120° beam angle
- Parallel wiring to each LED ensures that if one LED goes out, the rest of the cutting increment stays lit
- Requires the use of Trulux Controller/Receiver Combo with LED-DR driver (when using included power connector kit; max run 50 feet) or 24V DC Power Supply & RGB Controller Set (max run 65 feet)
- Sold as 65ft reels only†

Specifications:

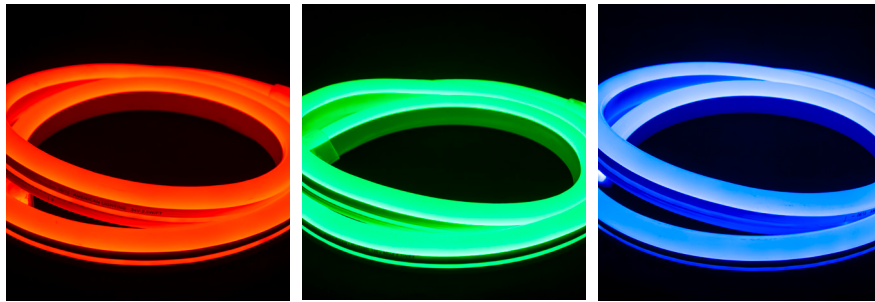
Series	RGB-NF
Input voltage	24V DC
Colors	RGB
Wattage	2.7W/ft
Reel length	65ft†
Dimensions	5/8"W x 1-1/8"H
Maximum run	65ft
Cuttability	12"†
Dimming	10-100% with controller*
Rating	cETLus†, Indoor/outdoor; IP65**, RoHS
Rated life	30,000 hours

*Requires the use of an RGB or DMX controller

**IP65 rated only when used with pre-attached molded power cord and end cap is properly sealed with dielectric grease, silicone and shrink tube

†ETL Listing for 24V Polar 2 RGB Neon is valid for lengths cut to 65 feet or less and only when factory installed (attached) power connection is used. (American Lighting warrants up to 65 feet maximum run using 24V DC Power Supply & RGB Controller set; 50 feet max run with Trulux Controller/Receiver combo with LED-DR driver)

POLAR 2 RGB NEON



65ft reel • RGB LEDs • Opaque White Jacket
RGB-NF-24V-65 (24V)

Polar 2 RGB Neon Reels include (1) 65ft Reel of Polar 2 RGB Neon, (1) Attached 5ft power cord (cETLus Listed, no plug, no inverter), (4) Additional 5ft power connection kits (non-rated, no plug, no inverter), (1) End cap on dead end

POLAR 2 RGB NEON ACCESSORIES



RF-RGBW-3Z
RF-RGBW-USB
RF-RGBW-3AAA
 Trulux RGB
 R.F. Controllers



DMX-1Z-3P
DMX-3Z
DMX-2-2
 Trulux RGB DMX
 Controllers



REC-5A-4Z
REC-5A-4Z-WiFi
REC-DMX-5A-4Z
REC-DMX-5A-4Z-WiFi
 Trulux Receivers



LED-RGB-15A-24V (Requires LED-RGB-CTRL-24V)
LED-RGB-CTRL-24V (Requires LED-RGB-15A-24V)
 24V DC Power Supply & RGB Controller
 10A DC driver with 5ft power cord has mating
 connector for RGB controller; Allows for run
 lengths up to 65 feet; Must be used together



RGB-NF-CONKIT-NP
 24V Power Connector Kit
 (1) 5ft Power cord (no plug or
 inverter), (2) power pins, (1) end
 cap, and (2) 4" pieces of shrink tube



RGB-NF-JUMP.5 (6")
RGB-NF-JUMP3 (3ft)
RGB-NF-JUMP10 (10ft)
 Linking Cables



RGB-NF-INVS
 Invisible Splice Kit
 (20) Splice pins and
 (10) 4" pieces of shrink tube

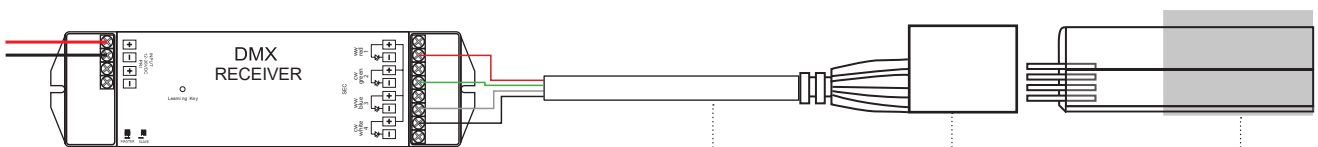


P2-NF-CLIPS
 Mounting Clips
 (10) Aluminum clips
 with (20) screws



RGB-NF-CHAN-3 (3ft)
 Mounting Channel
 Aluminum

POLAR 2 RGB BASIC SET-UP (Using Trulux Controller/Receiver Combo with LED-DR driver)



Supply the receiver (REC-DMX-5A-4Z) with 24V DC power and sync with Trulux DMX RGB Control (sold separately)

Power Connection

RGB-NF-24V-65

SHRINK TUBE

POLAR 2 MINI NEON



Polar 2 Mini Neon

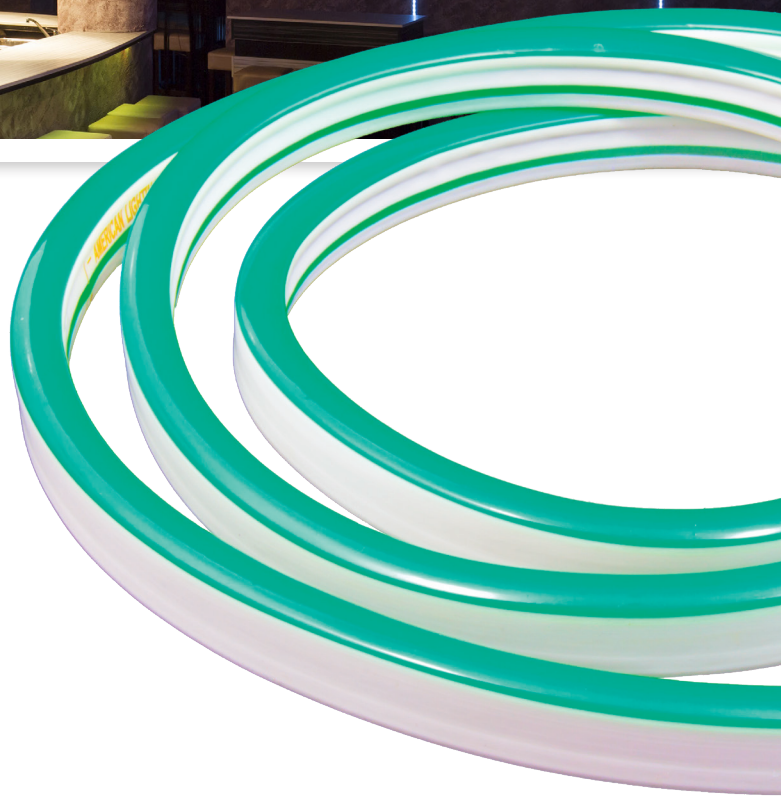
- 1/3" LED spacing and opaque, colored jacket provides a uniform appearance for direct-view applications
- Flexible rubber housing with frosted or colored PVC lens is protected with UV inhibitor
- Parallel wiring to each LED ensures that if one LED goes out, the rest of the cutting increment stays lit
- 3528 SMD LEDs emit up to 90 lumens per foot
- Clips, plastic track, or aluminum channel available for a variety of mounting purposes including coves and ledges
- Sold as 150ft reels only†

Specifications:

Series	MINI-P2-NF
Input voltage	120V AC, 60Hz
Colors	WW/WH/AY/BL/GR/OR/PI/RE
Lumens	See individual product
Wattage	2.4W/ft
Reel length	150ft
Dimensions	13/32"W x 3/4"H
Maximum run	150ft
Cuttability	18"†
Dimming	10-100%*
Rating	cETLus, Indoor/outdoor; IP65
Rated life	30,000 hours

*With most standard, low-voltage magnetic, and low-voltage electronic dimmers (minimum loads may apply). Per the NEC, switched wall outlets cannot be used with wall dimmers.

†cETLus Listing for 120V is void if product is cut



POLAR 2 MINI NEON REELS



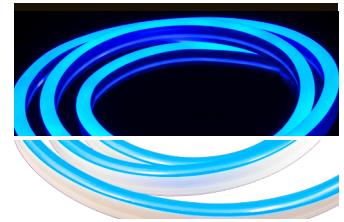
2700K Warm White LEDs
Opaque White Jacket
79CRI • 63Lm/ft
MINI-P2-NF-WW (120V)



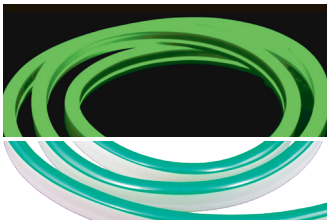
5000K Bright White LEDs
Opaque White Jacket
78CRI • 63Lm/ft
MINI-P2-NF-WH (120V)



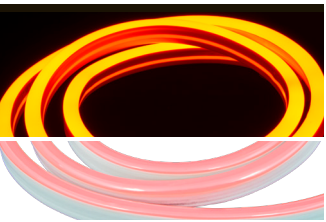
Amber LEDs
Opaque Yellow Jacket
590nm • 21Lm/ft
MINI-P2-NF-AY (120V)



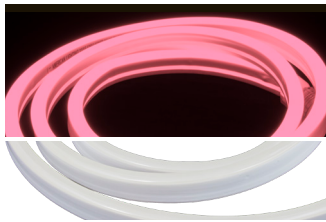
Blue LEDs
Opaque Blue Jacket
469nm • 5Lm/ft
MINI-P2-NF-BL (120V)



Green LEDs
Opaque Green Jacket
521nm • 21Lm/ft
MINI-P2-NF-GR (120V)



Orange LEDs
Opaque Amber Jacket
606nm • 12Lm/ft
MINI-P2-NF-OR (120V)



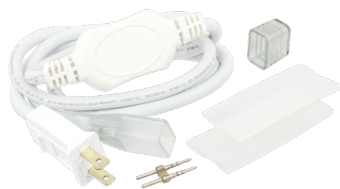
Pink LEDs
Opaque White Jacket
610nm • 17Lm/ft
MINI-P2-NF-PI (120V)



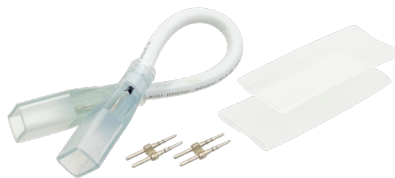
Red LEDs
Opaque Red Jacket
619nm • 5Lm/ft
MINI-P2-NF-RE (120V)

Polar 2 Mini Neon Reels include (1) 150ft Reel of Polar 2 Mini Neon, (1) Attached MINI-P2-NF-CONKIT-8A, (4) MINI-P2-NF-CONKIT-8A, (1) End cap on dead end

POLAR 2 MINI NEON ACCESSORIES



MINI-P2-NF-CONKIT-8A
120V Power Connection Kit
(1) 5ft Plug-in power cord with fused plug and 8A inverter,
(1) power pin, (2) 4" pieces of shrink tube, and (1) end cap



MINI-P2-NF-JUMP.5 6"
MINI-P2-NF-JUMP3 3ft
MINI-P2-NF-JUMP10 10ft
MINI-P2-NF-JUMP20 20ft
Splice Linking Cable
Includes: (2) power pins and (2) 4" sections of shrink tube



MINI-P2-NF-INVS
Invisible Splice Kit
(10) splice pins and
(20) 4" section of shrink tube



MINI-P2-NF-ENDS
(10) Clear plastic end caps



MINI-P2-NF-CLIPS
(10) 2" Aluminum mounting clips with (20) screws



MINI-P2-NF-CHAN-3
3ft Aluminum mounting channel
1/2" w x 23/32" h

LED ROPE LIGHT KITS



LED Rope Light Kits

- Line voltage - no drivers needed
- Interconnectable kits (3000K Warm White and 6400K Cool White) or custom cut lengths (2100K Ultra Warm White and 3000K Warm White)
- LED Flexbrite consumes only 1 watt per foot
- Dimmable 5-100%*
- UL Listed* for indoor and outdoor use
- 60,000 hours rated life

Specifications:

Series	LR-LED (Kits)
Input voltage	120V AC, 60Hz
Colors	2100K (UWW) / 3000K (WW) / 6400K (CW)
Lumens	See individual product
Wattage	1W per ft
Reel length	See individual product
Dimensions	1/2" Dia.
Maximum run	192 feet (kits) / 150 feet (custom cut)
Cutability	N/A*
Dimming	5-100%*
Rating	UL Listed* for indoor/outdoor use
Rated life	60,000 hrs

*With most low-voltage electronic, LED, and CFL dimmers (minimum loads may apply). Per the NEC, switched wall outlets cannot be used with wall dimmers

*UL listing is void if product is cut (1/2" rope)

LED FLEXBRITE KITS



Warm White Kits

120V / 3000K / 72CRI / 32Lm/ft / 1/2" Diameter

- LR-LED-WW-3** (3ft / 3W)
- LR-LED-WW-9** (9ft / 9W)
- LR-LED-WW-15** (15ft / 15W)
- LR-LED-WW-30** (30ft / 30W)
- LR-LED-WW-75** (75ft / 75W)



Cool White Kits

120V / 6400K / 75CRI / 34Lm/ft / 1/2" Diameter

- LR-LED-CW-3** (3ft / 3W)
- LR-LED-CW-9** (9ft / 9W)
- LR-LED-CW-15** (15ft / 15W)
- LR-LED-CW-30** (30ft / 30W)
- LR-LED-CW-75** (75ft / 75W)

120V Kits Include: (1) Removable 5ft power cord with 1.6A inverter, (1) removable end cap, and (1) mounting clip per foot of rope

ACCESSORIES



Linking Cable
Jumper for LED Flexbrite Kits
Interconnectable

LR-LED-EXT3 (3ft)



Mounting Track
Clear plastic

RL-TRK-3 (3ft / Case of 40)
RL-TRACK-4 (4ft)



Mounting Clips
Clear plastic

RL-CLIP/SCREW
(10) Clips with (20) Screws
LR-CLIP-20
(20) Clips with (40) Screws

LED ROPE LIGHT



LED Rope Light

- Dimmable with most electronic low voltage and LED/CFL dimmers* (minimum loads may apply)
- Clear, UV inhibited PVC housing
- Parallel wiring to each LED ensures that if one LED goes out, the rest of the cutting increment stays lit
- Vertically mounted 3mm LEDs at 1" spacing emit up to 34 lumens per foot
- Clips or clear plastic track available for a variety of mounting purposes including shelves, ledges, and coves

Specifications:

Series	ULRL-LED, LED-MRL
Input voltage	120V AC 60Hz
Colors	See individual product
Lumens	See individual product
Wattage	See individual product
Reel length	150ft
Dimensions	1/2" Dia. or 3/8" Dia.
Maximum run	150ft
Cutability	36" unless otherwise noted†
Dimming	5-100%*
Rating	Indoor/outdoor
Rated life	60,000 hours

*With most low-voltage electronic, LED, and CFL dimmers (minimum loads may apply). Per the NEC, switched wall outlets cannot be used with wall dimmers

†UL listing is void if product is cut (1/2" rope)



120V LED ROPE LIGHT REELS



150ft Reel • 1/2" 120V LED Rope Light

- ULRL-LED-WW-150** 3000K Warm White, 1W/ft, 36" cut†, 32Lm/ft
- ULRL-LED-WH-150** 5000K Bright White, 1W/ft, 36" cut†, 34Lm/ft
- ULRL-LED-AM-150** Amber, 0.47W/ft, 60" cut†
- ULRL-LED-BL-150** Blue, 1W/ft, 36" cut†
- ULRL-LED-GR-150** Green, 1W/ft, 36" cut†
- ULRL-LED-RE-150** Red, 0.47W/ft, 60" cut†
- ULRL-LED-YE-150** Yellow, 0.47W/ft, 60" cut†

150ft Reel • 3/8" 120V LED Rope Light

- LED-MRL-WW-150** 3000K Warm White, 1W/ft, 36" cut†, 32Lm/ft
- LED-MRL-WH-150** 5000K Bright White, 1W/ft, 36" cut†, 34Lm/ft
- LED-MRL-AM-150** Amber, 60" cut†, 0.47W/ft
- LED-MRL-YE-150** Yellow, 60" cut†, 0.47W/ft

120V Bulk Reels Include: (5) 5ft power cord with fused plug (one is pre-attached), (1) removable end cap, and (50) mounting clips with screws

ACCESSORIES



- RL-LED-CONKIT-1.6AMP** 1/2" Dia.
- MRL-LED-CONKIT-1.6AMP** 3/8" Dia.
- 120V Power Connection Kit
- (1) Non-UL 5ft power cord with fused plug, (1) power connector, and (1) end cap



- RL-INV SPL** 1/2" Dia.
- MRL-INV SPL** 3/8" Dia.
- (10) Clear Plastic Non-UL splice connectors



- MRL-LED-T** 3/8" Dia.
- (10) White Plastic Non-UL "T" connectors



- RL-SPLICE** 1/2" Dia.
- (10) White Plastic Non-UL splice connectors



- RL-ST-3** 1/2" Dia.
- (10) 3" Pieces of shrink tube



- RL-END** 1/2" Dia.
- MRL-END** 3/8" Dia.
- (10) Clear plastic end caps



- RL-CLIP/SCREW** 1/2" Dia.
- MRL-CLIP/SCREW** 3/8" Dia.
- (10) Clear plastic mounting clips with screws



- RL-TRACK-4** 1/2" Dia.
- MRL-TRACK-4** 3/8" Dia.
- 4ft Clear plastic mounting track

INCANDESCENT ROPE LIGHT



Incandescent Rope Light

- Flexible, cost effective lighting for a variety of applications
- Bright, incandescent bulbs spaced every 1 inch inside a UV resistant, colored PVC housing
- 1/2" and 3/8" rope light diameter options
- 150ft Bulk reels can be field cut to every 18" for maximum project flexibility
- Clips or clear plastic track available for a variety of mounting purposes including shelves, ledges, and coves



Specifications:

Series	RL and MRL
Input voltage	120V AC 60Hz
Colors	See individual product
Lumens	See individual product
Wattage	5.5W/ft
Reel length	150ft
Dimensions	1/2" Dia. or 3/8" Dia.
Maximum run	150ft
Cuttability	18" unless otherwise noted
Dimming	5-100%*
Rating	Indoor/outdoor
Rated life	25,000 hours

*With most incandescent dimmers (minimum loads may apply). Per the NEC, switched wall outlets cannot be used with wall dimmers



120V INCANDESCENT ROPE LIGHT REELS



150ft Reel • 1/2" 120V Incandescent Rope Light
RL-AM-150* Amber, 5.5W/ft
RL-BL-150* Blue, 5.5W/ft
RL-GR-150* Green, 5.5W/ft
RL-PI-150* Pink, 5.5W/ft



150ft Reel • 3/8" 120V Incandescent Rope Light
MRL-AM-150* Amber, 5.5W/ft
MRL-BL-150* Blue, 5.5W/ft
MRL-YE-150* Yellow, 5.5W/ft

*While supplies last

*While supplies last

120V Bulk Reels Include: (5) 5ft power cord with fused plug (one is pre-attached), (1) removable end cap, and (50) mounting clips

ACCESSORIES



RL-CONKIT 1/2" Dia.
MRL-CONKIT 3/8" Dia.
 120V Power Connection Kit
 (1) Non-UL 5ft power cord with fused plug,
 (1) power connector, and (1) end cap



RL-INV SPL 1/2" Dia.
MRL-INV SPL 3/8" Dia.
 (10) Clear Plastic Non-UL splice connectors



RL-ST-3 1/2" Dia.
 (10) 3" Pieces of shrink tube



RL-END 1/2" Dia.
 Clear plastic end cap
 (Bag of 10)



RL-TRACK-4 1/2" Dia.
MRL-TRACK-4 3/8" Dia.
 4ft Clear plastic mounting track



RL-CLIP/SCREW 1/2" Dia.
MRL-CLIP/SCREW 3/8" Dia.
 (10) Clear plastic mounting clips with screws