

# FRAMELESS STORM SENTINEL®

## POSITION. TRIM. COMPLY.

The all new ENPAC Frameless Storm Sentinel is an alternative to the original Storm Sentinel. With additional fabric added to each storm sentinel, custom sizes can be made right on the spot by simply cutting around the edges once the drain grate has been placed.

- Inexpensive and easy-to-use Best Management Practice (BMP)
- Comply with stringent NPDES & EPA standards (40 CFR 122.26).
- Vital element of any Stormwater Pollution Prevention Plan
- ODOT Approved.
- Overflow outlets to allow excessive water from heavy rain showers to bypass the system.
- No Overflow also available.
- Custom sizes available.
- Oil-Capturing option available.

**NEW!**



### FRAMELESS STORM SENTINEL®

Part #	Description	Dimensions in. (cm)	Weight lb. (kg)
4320-BG	Storm Sentinel Inlet Insert - Sediment No Frame	36 x 48 (91.4 x 122)	2 (.9)
4320-BG-BX	Storm Sentinel Inlet Insert Sediment Box 10		
4320-NO-BG	Storm Sentinel Inlet Insert - Sediment No Frame/No Overflow	36 x 48 (91.4 x 122)	2 (.9)
4320-IB-BG	Storm Sentinel Inlet Insert - Sediment-Oils No Frame	36 x 48 (91.4 x 122)	2 (.9)
4326-BG	Storm Sentinel Inlet Insert - Sediment No Frame	60 x 60 (152.4 x 152.4)	2 (.9)
4326-NO-BG	Storm Sentinel Inlet Insert - Sediment No Frame/No Overflow	60 x 60 (152.4 x 152.4)	2 (.9)
4326-IB-BG	Storm Sentinel Inlet Insert - Sediment-Oils No Frame	60 x 60 (152.4 x 152.4)	2 (.9)

Regulations: EPA, SPCC and NPDES

The Storm Sentinel is a registered trademark of ENPAC, LLC, U.S. trademark reg. number 2,953,485

# SPILL PROTECTOR™ DRAIN COVER

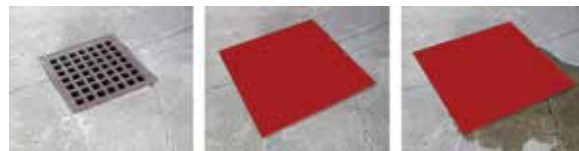
## SEAL THE SPILLS OUT!

Brought back by popular demand, the durable and chemically resistant Spill Protector™ serves as an effective barrier between drains and spills providing defense and protection against a variety of hazardous materials.

Approved for use with fuels and chemicals, SPILL PROTECTOR™ provides an air-tight seal preventing hazmat liquids from reaching the drain and precious surface water. High-visibility orange is a visual indicator for the drain shield and is available in 4 standard sizes. Easy to use, clean and reuse!



Custom sizes are available.



### SPILL PROTECTOR™ DRAIN COVER

Part #	Dimensions L x W x H in. (cm)	Weight lb. (kg)
4318-SP	18 x 18 x .25 (46 x 46 x .635)	7 (3)
4324-SP	24 x 24 x .25 (61 x 61 x .635)	10 (4)
4336-SP	36 x 36 x .25 (91 x 91 x .635)	15 (6)
4348-SP	48 x 48 x .25 (122 x 122 x .635)	19 (8)

Regulations: EPA, SPCC and NPDES

# CONCRETE WASHOUT

The new Concrete Washout containment unit by ENPAC® blends the durability of steel with the versatility of plastic to create a time-saving tool for your construction site. A steel frame combines with the 385 gallon plastic sump, forming an integral unit that can withstand the rigors of multiple washouts. Its rugged, reusable construction means that the product will pay for itself in no time. Furthermore, the natural properties of the polyethylene sump discourage hardened concrete from sticking to the interior, saving additional time, labor, and money. ENPAC® continues to offer the best combination of quality and convenience with this newest addition to the product line.



**NEW!**

- Polyethylene container
- Securely attached top steel frame with steel saddle straps
- Strong welded and bolted steel construction
- Durable and built for continuous usage
- Replaceable poly unit
- Provisions available for additional ease-of-use (dumping, transporting, etc.)



### CONCRETE WASHOUT

Part #	Dimensions in. (cm)	Spill Cap. gal. (L)	Weight lb. (kg)
5390-BK-CWO	79 x 78 x 20 (200.7 x 198 x 51)	385 (1457.4)	275 (127.7)

The ENPAC Concrete Washout was not designed to be lifted, suspended, and/or transported with material inside. Therefore, this unit does not have a load rating. "D" rings are intended to tip contents out of the unit.