

**ADHESIVE
ANCHORS**



ADHESIVE ANCHORS AND ACCESSORIES FOR EVERY APPLICATION.

The **DeWALT**® adhesive anchors range offers high performance, stress free fixing into brickwork, block work and concrete.

WORKING PRINCIPLES

Best suited for high load applications, the resulting bond between stud and resin is often stronger than the base material itself. The low expansion and splitting forces when the anchor is prestressed or loaded allow small edge distances and spacings.

This makes them ideal for close to edge fixing, close spacing and use in concrete of unknown quality or low compressive strength.

Each **DeWALT**® adhesive anchor is specifically formulated to provide a unique set of properties to suit various applications. Load capacities will depend on base material strength and integrity, stud or rebar specification and embedment depths.

For full technical information and to download the relevant approval and certification documentation please visit www.DeWALT.com.

PURE EPOXY ANCHORS



PURE150-PRO

- High thermal and high mechanical loading properties
- Outstanding resistance to chemicals
- Approved for use in both cracked and uncracked concrete
- Suitable for diamond drilled holes
- Suited to wet conditions/water filled holes and poor site conditions

VINYLESTER ANCHORS



AC100-PRO

- Good thermal and high mechanical loading properties
- Styrene free vinylester anchor
- Faster curing times
- High adhesive resistance, especially in alkaline conditions
- Suited to wet conditions/water filled holes
- Approved for a wide range of base materials

POLYESTER ANCHORS



PV45-PRO

- Quick curing
- Suited to a wide range of base materials
- Cost-effective solution
- Low odour formulation
- Suitable for indoor / dry environments

TYPICAL SETTING TIMES (AT 10°C)



TYPE	PV45-PRO	AC100-PRO	PURE150-PRO
GEL	20 min	15 min	90 min
DRY	100 min	80 min	30 h
WET	Not suitable	160 min	60 h

PURE150-PRO PURE EPOXY ANCHOR

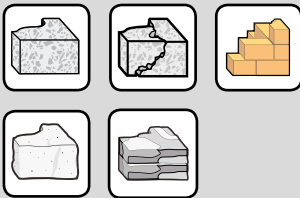
ADHESIVE ANCHORS

DESCRIPTION

- Pure epoxy mortar with ETA-Option1 approval, for use in cracked and uncracked concrete
- Approved for overhead applications (Option1/Core Drill) and water filled holes (Option1)
- The cracked concrete approval is valid for fixing with standard threaded rods and rebars
- Approved for diamond drilled holes
- Approved for seismic loads according to category C1 and C2 (M12 and M16)
- Includes mixing nozzle and extension

24 MONTHS
24 months shelf life

MATERIALS



See front cover foldout for details.

APPROVALS

EUROPEAN TECHNICAL ASSESSMENT



EUROPEAN TECHNICAL ASSESSMENT



EUROPEAN TECHNICAL ASSESSMENT

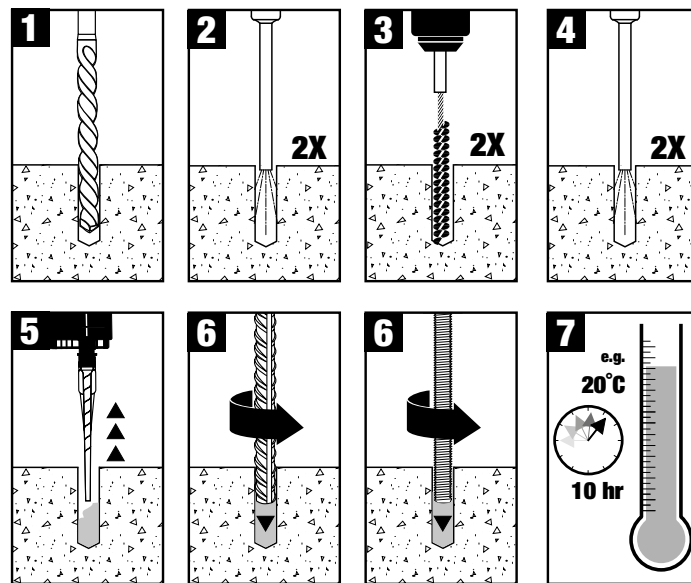


PRODUCT OVERVIEW

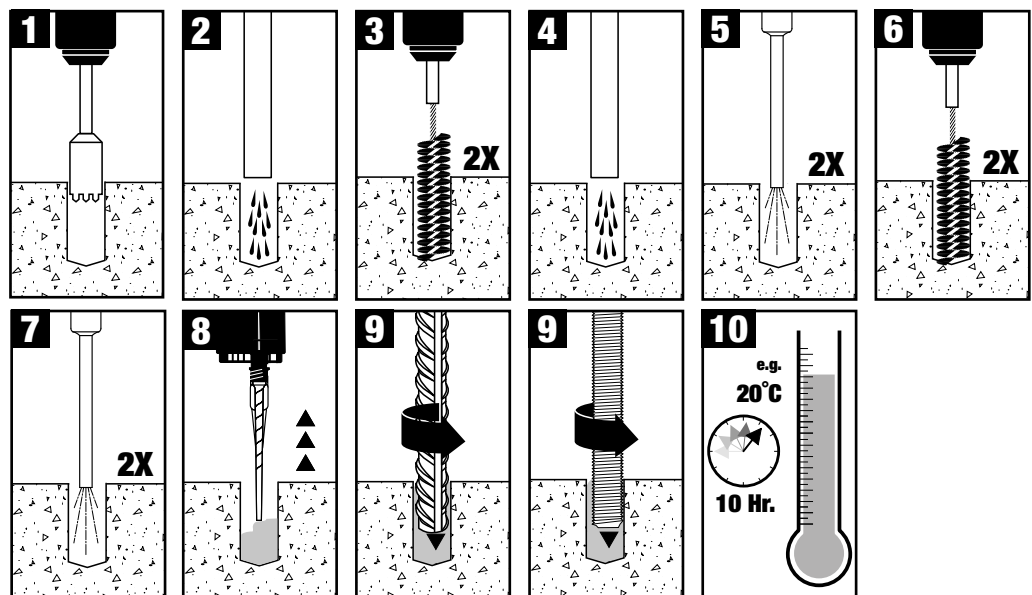


Cat No.	ETA	Cartridge Size [ml]	Box	Blister Pack	Pack Qty
DFC1110050	•	585	•		1

INSTALLATION INSTRUCTIONS - HAMMER DRILL



INSTALLATION INSTRUCTIONS - CORE DRILL

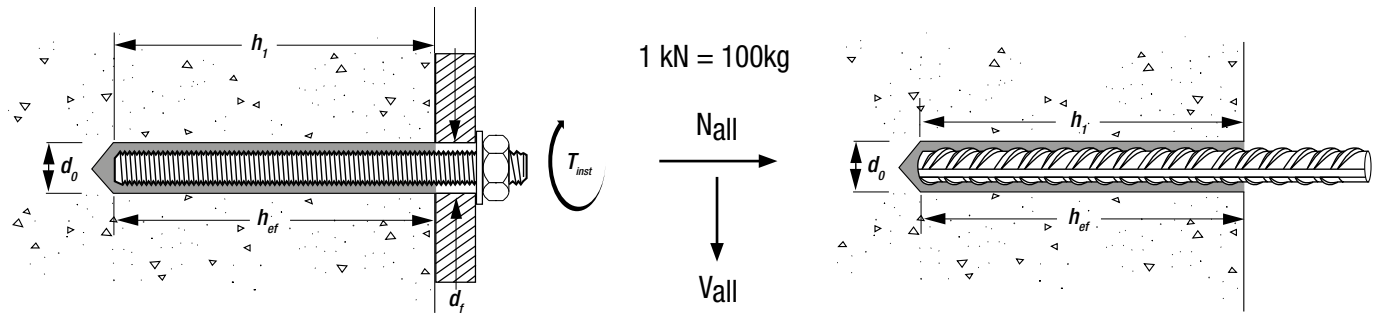


PURE150-PRO PURE EPOXY ANCHOR

SETTING TIMES

TEMP °C	GEL	SET DRY	SET WET
5 to 9	2 h	50 h	100 h
10 to 19	90 min	30 h	60 h
20 to 29	30 min	10 h	20 h
30 to 39	20 min	6 h	12 h
40 and above	12 min	4 h	8 h

TECHNICAL INFORMATION



ALLOWABLE LOADS - UNCRACKED CONCRETE, THREADED ROD, HAMMER DRILL - PURE150-PRO

C20/25

$$\frac{N_{Rk}}{\gamma_M \cdot \gamma_F} = N_{all}$$

$\gamma_M \cdot \gamma_F$
 $\gamma_F = 1.4$

8.8

40°C short term, 24°C long term

Size	d _o [mm]	d _f [mm]	h _{ef} [mm]		T _{inst} [Nm]	N _{all} [kN]		V _{all} [kN]	
			min	max		min	max	min	max
M8	10	9	60	160	10	9.0	13.8	8.4	8.4
M10	12	12	60	200	20	9.3	21.9	13.1	13.1
M12	14	14	70	240	40	11.7	31.9	19.3	19.3
M16	18	18	80	320	80	14.3	59.5	34.3	35.8
M20	24	22	90	400	120	14.6	93.3	41.0	56.0
M24	28	26	96	480	160	16.1	134.3	45.1	80.6
M27	32	30	108	540	180	19.2	175.0	53.9	105.0
M30	35	33	120	600	200	22.5	213.6	63.1	128.1

ALLOWABLE LOADS - CRACKED CONCRETE, THREADED ROD, HAMMER DRILL - PURE150-PRO

C20/25

$$\frac{N_{Rk}}{\gamma_M \cdot \gamma_F} = N_{all}$$

$\gamma_M \cdot \gamma_F$
 $\gamma_F = 1.4$

8.8

40°C short term, 24°C long term

Size	d _o [mm]	d _f [mm]	h _{ef} [mm]		T _{inst} [Nm]	N _{all} [kN]		V _{all} [kN]	
			min	max		min	max	min	max
M12	14	14	70	240	40	7.9	25.1	18.8	19.3
M16	18	18	80	320	80	10.2	41.5	24.5	35.8
M20	24	22	90	400	120	10.5	51.3	29.3	56.0
M24	28	26	96	480	160	11.5	67.7	32.2	80.6
M27	32	30	108	540	180	13.7	85.7	38.5	105.0
M30	35	33	120	600	200	16.1	105.8	45.1	128.1

ALLOWABLE LOADS - UNCRACKED CONCRETE, DIAMOND CORING - PURE150-PRO

C20/25

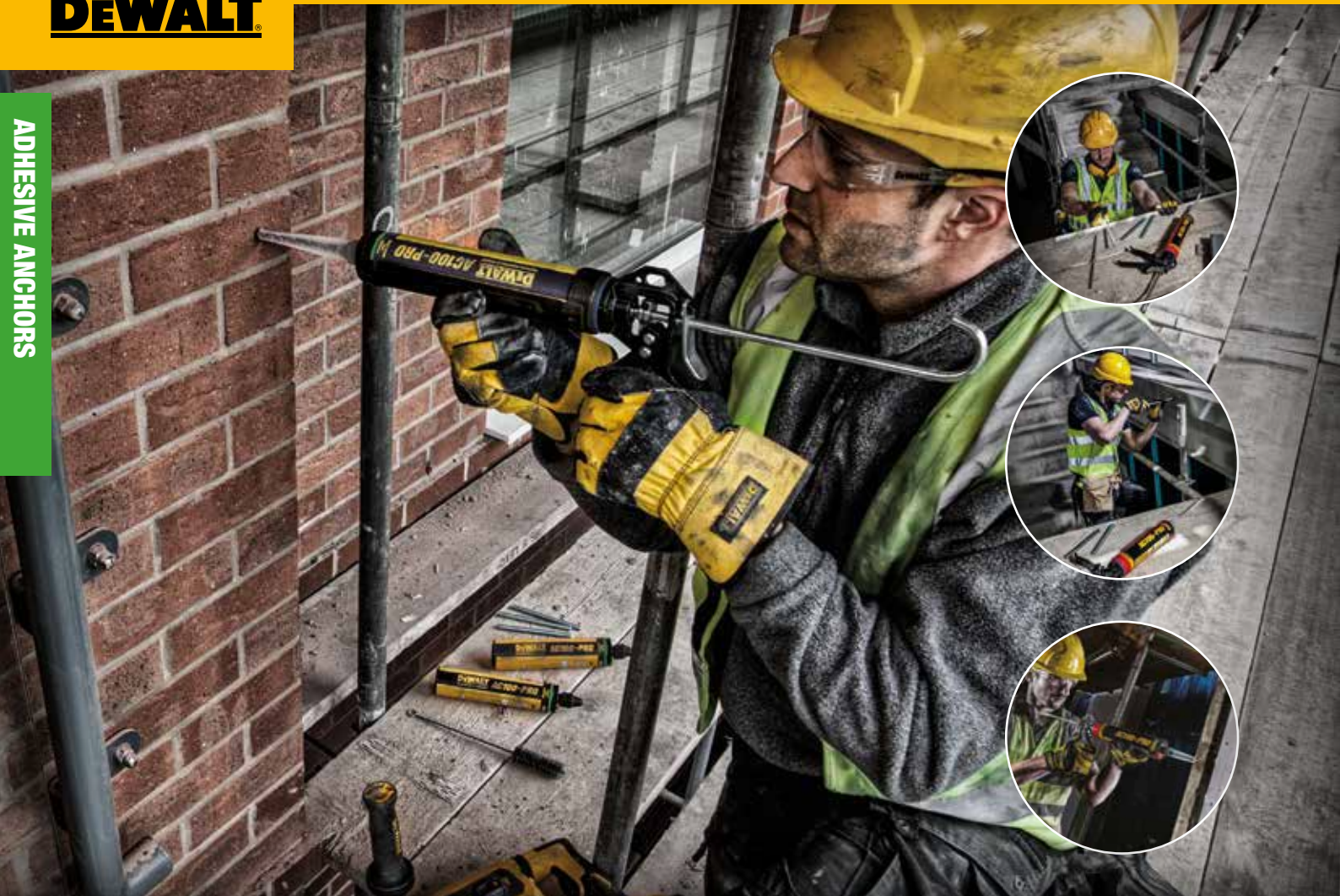
$$\frac{N_{Rk}}{\gamma_M \cdot \gamma_F} = N_{all}$$

$\gamma_M \cdot \gamma_F$
 $\gamma_F = 1.4$

8.8

40°C short term, 24°C long term

Size	d _o [mm]	d _f [mm]	h _{ef} [mm]		T _{inst} [Nm]	N _{all} [kN]		V _{all} [kN]	
			min	max		min	max	min	max
M10	12	12	60	200	20	9.9	21.9	13.1	13.1
M12	14	14	70	240	40	10.5	31.9	19.3	19.3
M16	18	18	80	320	80	14.3	59.5	34.3	35.8
M20	24	22	90	400	120	17.1	93.3	41.0	56.0
M24	28	26	96	480	160	18.8	129.3	45.1	80.6

**AC100-PRO VINYLESTER ANCHOR****APPROVED FOR ALMOST ANY APPLICATION.**

The AC100-PRO is a two-component vinylester adhesive anchor and is approved for almost all applications and base materials.

It provides consistent performance in uncracked and cracked concrete with a wide range of hole diameters and embedment depths as well as flexible fixture thicknesses and a simple installation process.

FOR CONCRETE

- ETAG 001 approved (ETA Option 1) for use in cracked and uncracked concrete

FOR MASONRY

- ETAG 029 approved for use in solid and hollow brick

FOR POST-INSTALLED REBAR

- ETA and National German Approval

FOR SEISMIC LOADING

- Seismic loading approval according to category C1

FLEXIBILITY BUILT-IN.

The AC100-PRO is approved for a temperature range of up to 120°C and can even be used in water filled holes. It also provides a fast curing time and high load capacity making it the ideal adhesive anchor for use on-site.

- Approved for water filled drill holes (Option 1 up to drill hole diameter $d_0 \leq 18$ mm)
- Approved for overhead applications (Option 1/PI Rebar M8 - M16)
- Installation down to -10°C
- Mixing nozzle included
- Suitable for use in rotary hammer drilled holes

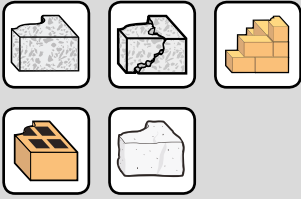


18 months shelf life
(12 months for 300ml)

The system also includes an extensive range of accessories including mixing nozzles, dispensing tools, brushes and threaded rods - see pages 114-117.

AC100-PRO VINYLESTER ANCHOR

MATERIALS



See front cover foldout for details.

APPROVALS

EUROPEAN TECHNICAL ASSESSMENT

ETAG 001 - Option 1
ETA-13/0258

EUROPEAN TECHNICAL ASSESSMENT

EOTA TR 023 - PI Rebar
ETA-13/0316

EUROPEAN TECHNICAL ASSESSMENT

ETAG 029 - Masonry
ETA-13/0050

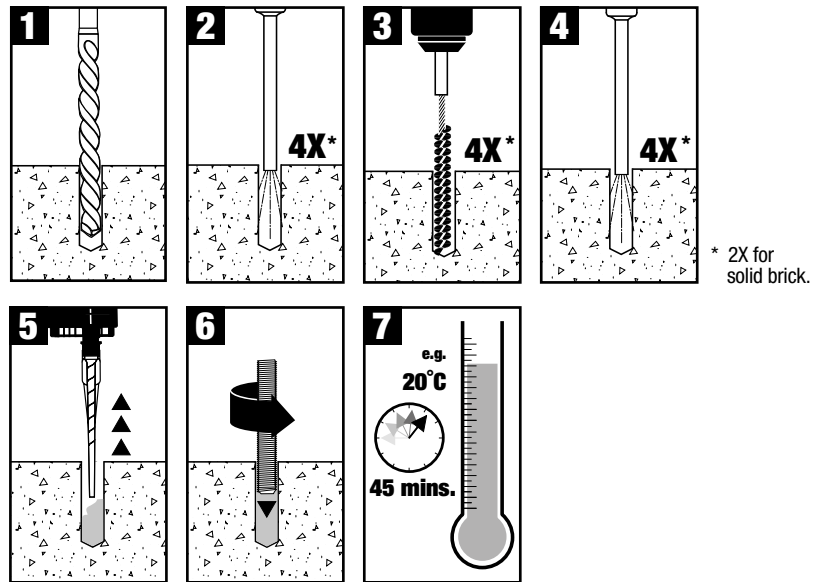


PRODUCT OVERVIEW

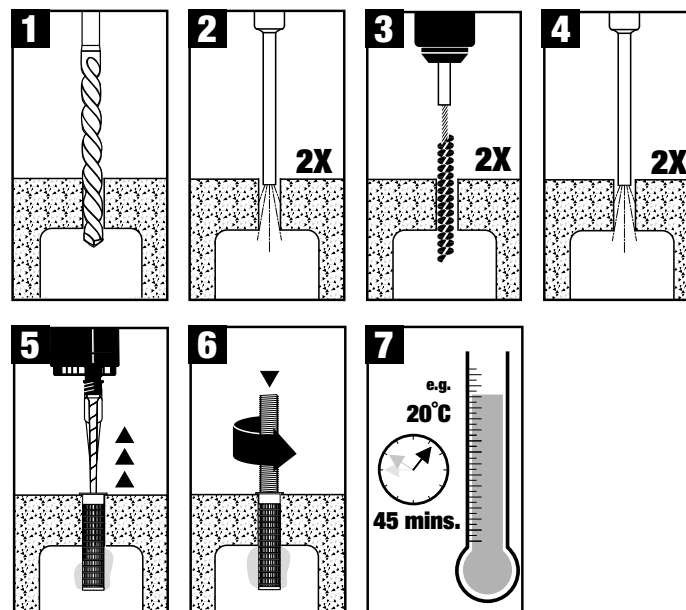


Cat No.	ETA	Cartridge Size [ml]	Box	Blister Pack	Pack Qty
DFC1230050	•	300ML	•		1
DFC1230100	•	360ML	•		1
DFC1230000	•	410ML	•		1

INSTALLATION INSTRUCTIONS - CONCRETE AND SOLID BRICK / MASONRY



INSTALLATION INSTRUCTIONS - HOLLOW BRICKS, WITH SLEEVE



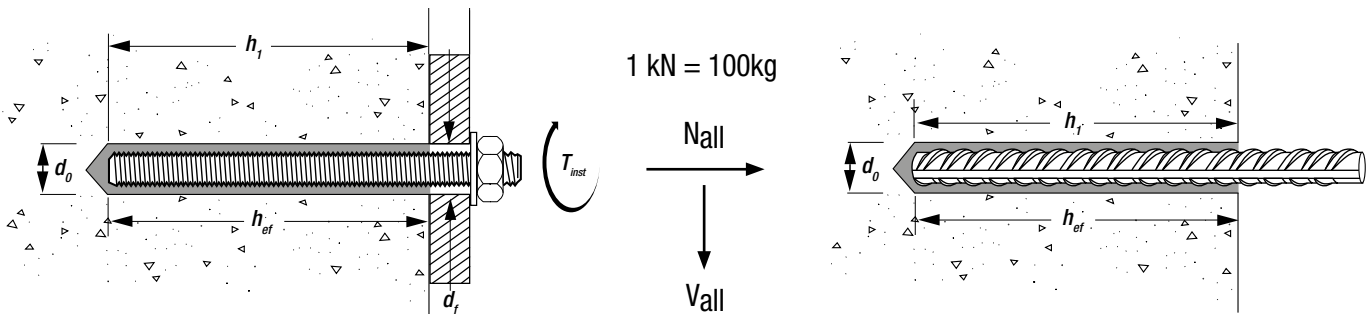
AC100-PRO VINYLESTER ANCHOR

ADHESIVE ANCHORS

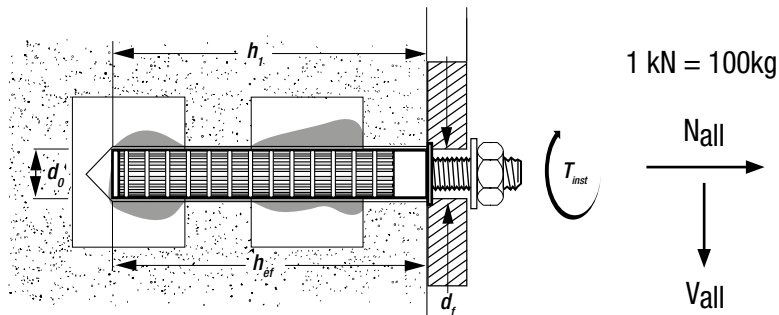
SETTING TIMES

TEMP °C	SET GEL	SET DRY	SET WET
-10 to -4	90 min	24 h	48 h
-5 to -1	90 min	14 h	28 h
0 to 4	45 min	7 h	14 h
5 to 9	25 min	2 h	4 h
10 to 19	15 min	80 min	160 min
20 to 29	6 min	45 min	90 min
30 to 34	4 min	25 min	50 min
35 to 39	2 min	20 min	40 min
40 and above	1,5 min	15 min	30 min

TECHNICAL INFORMATION - THREADED ROD WITHOUT SLEEVE AND REBAR



TECHNICAL INFORMATION - THREADED ROD WITH SLEEVE



XLR

SDS-max®
CARBIDE DRILL BITS
 FOR FAST INSTALLATION
 FROM 16-42 MM DIAMETER



XR FLEX VOLT

DCH481
54V XR
FLEXVOLT
SDS-max®
HAMMER



See page 6 for more information

AC100-PRO VINYLESTER ANCHOR

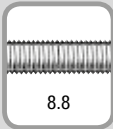


ALLOWABLE LOADS - UNCRACKED CONCRETE, THREADED ROD - AC100-PRO



$$\frac{N_{Rk}}{\gamma_M \cdot \gamma_F} = N_{all}$$

$\gamma_f = 1.4$



40°C short term, 24°C long term

Size	d _o [mm]	d _f [mm]	h _{ef} [mm]		T _{inst} [Nm]	N _{all} [kN]		V _{all} [kN]	
			min	max		min	max	min	max
M8	10	9	60	160	10	7.9	13.8	8.4	8.4
M10	12	12	60	200	20	9.3	21.9	13.1	13.1
M12	14	14	70	240	40	11.7	31.9	19.3	19.3
M16	18	18	80	320	80	14.3	59.7	34.3	35.8
M20	24	22	90	400	120	17.1	93.3	41.0	56.0
M24	28	26	96	480	160	18.8	134.3	45.1	80.6
M27	32	30	108	540	180	22.4	175.0	53.9	105.0
M30	35	33	120	600	200	26.3	213.2	63.1	128.0

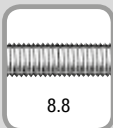


ALLOWABLE LOADS - CRACKED CONCRETE, THREADED ROD - AC100-PRO



$$\frac{N_{Rk}}{\gamma_M \cdot \gamma_F} = N_{all}$$

$\gamma_f = 1.4$



40°C short term, 24°C long term

Size	d _o [mm]	d _f [mm]	h _{ef} [mm]		T _{inst} [Nm]	N _{all} [kN]		V _{all} [kN]	
			min	max		min	max	min	max
M8	10	9	60	160	10	2.9	7.7	5.7	8.4
M10	12	12	60	200	20	3.6	12.5	9.0	13.1
M12	14	14	70	240	40	5.8	19.7	13.8	19.3
M16	18	18	80	320	80	8.8	35.1	21.1	35.8
M20	24	22	90	400	120	12.2	54.9	29.3	56.0
M24	28	26	96	480	160	13.4	79.0	32.2	80.6
M27	32	30	108	540	180	16.0	118.1	38.5	105.0
M30	35	33	120	600	200	18.8	145.9	45.1	128.0

PV45-PRO STYRENE-FREE ADHESIVE ANCHOR

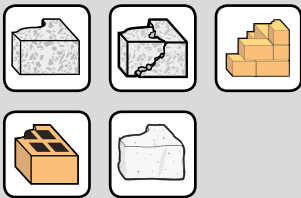
ADHESIVE ANCHORS

DESCRIPTION

- ETA approved for uncracked concrete, solid and hollow brick
- Quick curing
- Styrene free low odour formulation
- Ideal for threaded rods
- Includes mixing nozzle
- Suitable for indoor / dry environments

18 MONTHS
18 months shelf life

MATERIALS



See front cover foldout for details.

APPROVALS

EUROPEAN TECHNICAL ASSESSMENT

ETAG 001 - Option 1
ETA-13/0258

EUROPEAN TECHNICAL ASSESSMENT

ETAG 029 - Masonry
ETA-13/0050

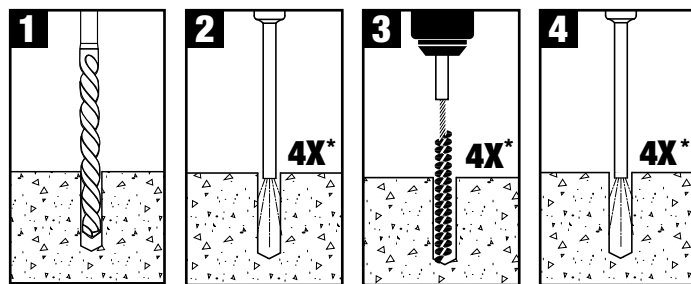


PRODUCT OVERVIEW

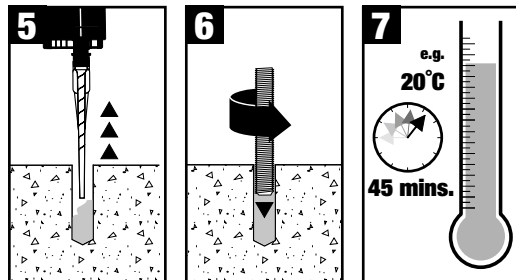


Cat No.		Cartridge Size [ml]			Pack Qty
DFC1320000	•	300	•		1

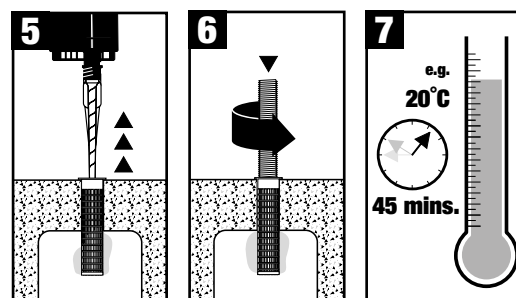
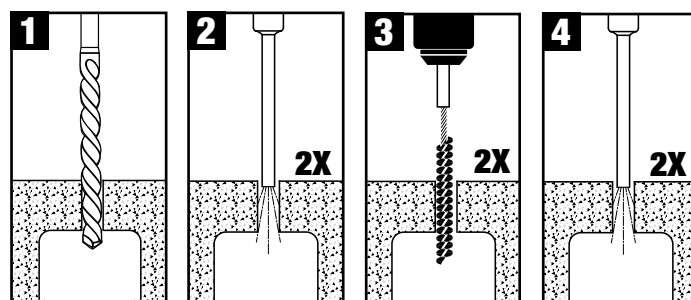
INSTALLATION INSTRUCTIONS - CONCRETE AND SOLID BRICK / MASONRY



* 2X for solid brick.



INSTALLATION INSTRUCTIONS - HOLLOW BRICKS, WITH SLEEVE

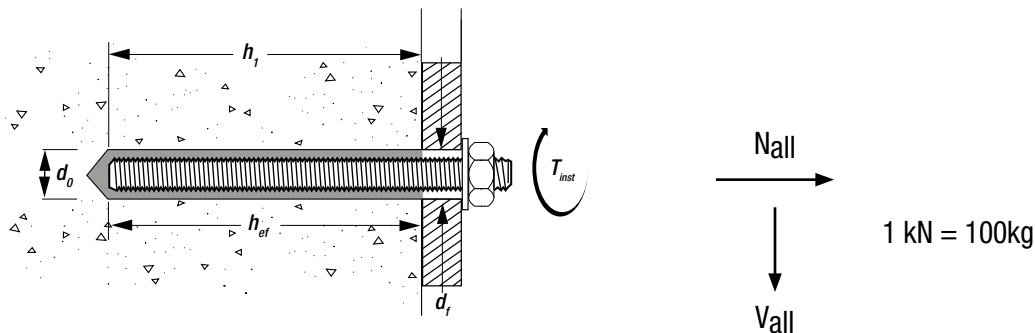


PV45-PRO STYRENE-FREE ADHESIVE ANCHOR

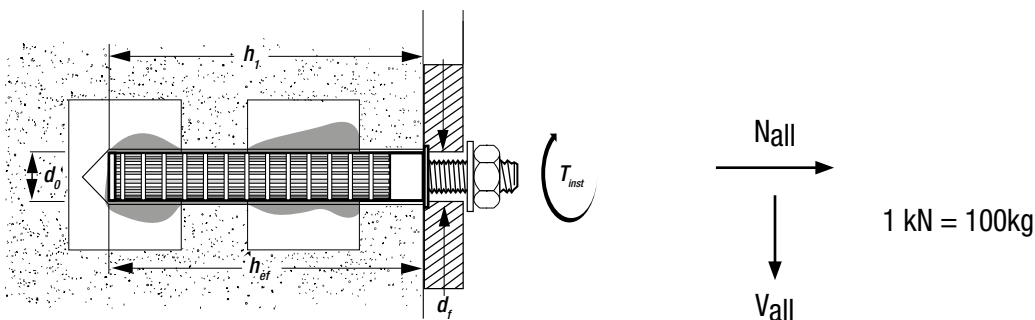
SETTING TIMES

TEMP °C	SET GEL	SET DRY
- 5 to -1	90 min	360 min
0 to 4	45 min	180 min
5 to 9	25 min	120 min
10 to 14	20 min	100 min
15 to 19	15 min	80 min
20 to 29	6 min	45 min
30 to 34	4 min	25 min
35 to 39	2 min	20 min


TECHNICAL INFORMATION - THREADED ROD WITHOUT SLEEVE



TECHNICAL INFORMATION - THREADED ROD WITH SLEEVE



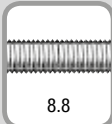
ALLOWABLE LOADS - UNCRACKED CONCRETE - PV45-PRO



C20/25

$$\frac{N_{Rk}}{\gamma_M \cdot \gamma_F} = N_{all}$$

$\gamma_f = 1.4$



8.8

40°C short term, 24°C long term

Size	d _o [mm]	d _f [mm]	h _{ef} [mm]	T _{inst} [Nm]	N _{all} [kN]	V _{all} [kN]
M8	10	10	80	10	6.3	8.6
M10	12	12	90	20	13.9	13.1
M12	14	14	110	40	13.9	19.4
M16	18	18	125	60	19.8	36.0
M20	24	24	170	120	29.8	56.0
M24	28	28	210	150	37.7	80.6

SC-PRO SPINNING ADHESIVE CAPSULES

DESCRIPTION

- ETA option 7 approval for uncracked concrete
- For use in combination with chisel point threaded rods
- Amount of mortar is exactly fitted to the drill hole diameter and hole depth

18 MONTHS
18 months shelf life

MATERIALS



See front cover foldout for details.

APPROVALS

EUROPEAN TECHNICAL ASSESSMENT

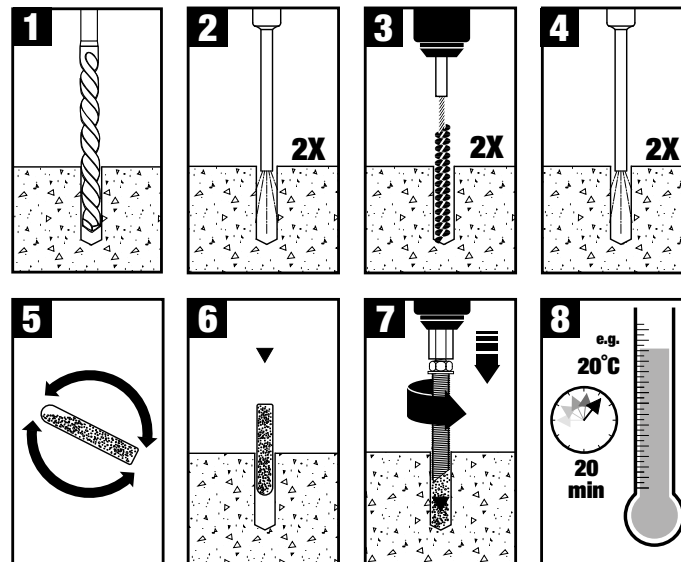
ETAG 001 - Option 7
ETA-13/0051

PRODUCT OVERVIEW



Cat No.						Pack Qty
		Drill Dia. [mm]	Thread Size [mm]	Box	Blister Pack	
DFC1510000	•	10	M8	•		10
DFC1510050	•	12	M10	•		10
DFC1510100	•	14	M12	•		10
DFC1510150	•	18	M16	•		10

INSTALLATION INSTRUCTIONS

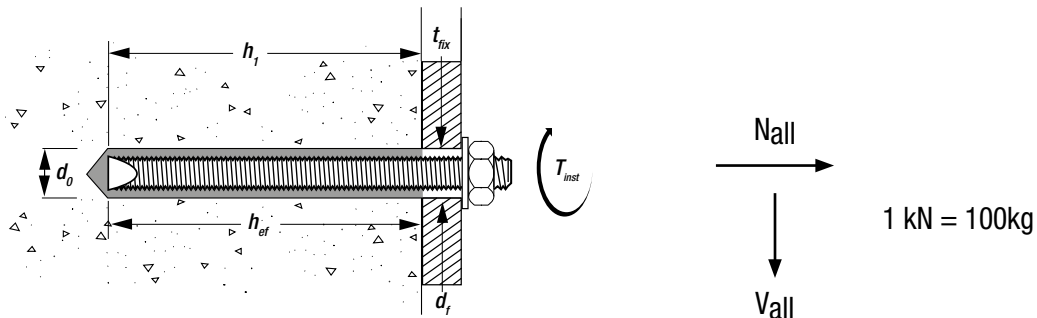


SETTING TIMES

TEMP °C	SET DRY	SET WET
> -5	5 h	10 h
> +5	60 min	120 min
> +20	20 min	40 min
> +30	10 min	20 min

SC-PRO SPINNING ADHESIVE CAPSULES

TECHNICAL INFORMATION



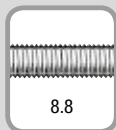
ADHESIVE ANCHORS

ALLOWABLE LOADS - UNCRACKED CONCRETE - SC-PRO



$$\frac{N_{Rk}}{\gamma_M \cdot \gamma_F} = N_{all}$$

$\gamma_f = 1.4$



40°C short term, 24°C long term

Size	d _o [mm]	d _f [mm]	h _{ef} [mm] min	T _{inst} [Nm]	N _{all} [kN] min	V _{all} [kN] min
M8	10	9	80	10	11.5	8.6
M10	12	12	90	20	16.2	13.1
M12	14	14	110	40	23.7	19.4
M16	18	18	125	80	33.6	36.0

XLR®

SDS-plus®
CARBIDE DRILL BITS
FOR FAST INSTALLATION
FROM 5-14 MM DIAMETER



XR FLEX VOLT®

DCH334
54V XR
FLEXVOLT
SDS-plus®
HAMMER



See page 6 for more information

ADHESIVE ANCHORS

ADHESIVE ANCHORS



PROFESSIONAL ACCESSORIES FOR DeWALT® ADHESIVE ANCHORS

Includes nozzles, brushes, sleeves and threaded rods, all manufactured to the same high standards to ensure a quality fixing.

DESCRIPTION

- A range of dispensing tools for use with DeWALT® adhesive anchors
- Suitable for use with cartridges from 300ml to 585ml

DISPENSING TOOLS



Cat No.	Type	Cartridge Size [ml]	Box	Blister Pack	Pack Qty
DFC1610000	Manual	300	•		1
DFC1610050	Manual	360	•		1
DFC1610100	Manual	410	•		1
DFC1610150	Heavy Duty Manual	410	•		1
DFC1610350	Manual	585	•		1
DFC1630050	Pneumatic	585	•		1

DESCRIPTION

- White 18 element nozzle for use with PURE150-PRO
- Black 14 element nozzle for use with AC100-PRO, PV45-PRO and AC100-PRO NORDIC

MIXING NOZZLES



Cat No.	Description	Box	Blister Pack	Pack Qty
DFC1640350	White - PURE150-PRO	•		10
DFC1640450	Black - AC100-PRO, PV45-PRO, AC100-PRO NORDIC	•		10

DESCRIPTION

- 200-1000mm extensions for use with mixing nozzles

EXTENSION NOZZLES



Cat No.	Length [mm]	Box	Blister Pack	Pack Qty
DFC1640500	200	•		10
DFC1640200	500	•		10
DFC1640250	1000	•		10

ADHESIVE ANCHOR ACCESSORIES

DESCRIPTION

- Manual blow pump for clearance of debris and dust from drilled holes

BLOW PUMP



Cat No.	Description	Box	Blister Pack	Pack Qty
DFC1650050	DeWALT® Blow Pump	•		1

DESCRIPTION

- Nylon brush for quick cleaning of drilled holes
- Not suitable for ETA approved applications

BRUSHES



Cat No.	Drill Dia. [mm]	Box	Blister Pack	Pack Qty
DFC1660000	8-10	•		1
DFC1660050	10-14	•		1
DFC1660100	16-28	•		1

DESCRIPTION

- Steel brushes and extensions for installation of ETA approved adhesive anchors

STEEL BRUSHES AND SDS EXTENSIONS



Cat No.	Length [mm]	Brush Dia. [mm]	Drill Dia. [mm]	Rebar Size [mm]	Thread Size [mm]	Box	Blister Pack	Pack Qty
DFC1670000						•		1
DFC1670050	300					•		1
DFC1670100	170	12	10		M8	•		1
DFC1670150	170	14	12	Ø8	M10	•		1
DFC1670200	200	16	14	Ø10	M12	•		1
DFC1670250	200	18	16	Ø12	M16	•		1
DFC1670300	300	20	18	Ø14	M16	•		1
DFC1670350	300	22	20	Ø16		•		1
DFC1670400	300	26	24 /25	Ø20	M20	•		1
DFC1670450	300	30	28		M24	•		1
DFC1670500	300	34	32	Ø25	M27	•		1
DFC1670550	300	37	35	Ø28	M30	•		1
DFC1670600	300	39	37	Ø32		•		1

* Core drill bit

ADHESIVE ANCHOR ACCESSORIES






ADHESIVE ANCHORS

DESCRIPTION

- Plugs available for 10-32mm diameter rebar and for threaded rods (see table)

STANDARD PISTON PLUGS









Cat No.	 Drill Dia. [mm]	 Rebar Size [mm]	 Thread Size [mm]	 Box	 Blister Pack	Pack Qty
DFC1690000	14	Ø10	M12	•		10
DFC1690050	16	Ø12		•		10
DFC1690150	20	Ø16		•		10
DFC1690250	24-25	Ø20	M20	•		10
DFC1690300	27-29		M24	•		10
DFC1690350	32	Ø25	M27	•		10
DFC1690400	35-37	Ø28-32	M30	•		10

DESCRIPTION

- Plastic for using adhesive anchors in hollow base materials

PLASTIC SLEEVES









Cat No.	 Length [mm]	 Drill Dia. [mm]	 Diameter [mm]	 Thread Size [mm]	 Box	 Blister Pack	Pack Qty
DFC4710000	80	12	12	M6 - M8	•		10
DFC4710050	85	16	16	M8 - M10	•		10
DFC4710100	85	20	20	M12 - M16	•		10
DFC4710150	130	16	16	M8 - M10	•		10
DFC4710200	130	20	20	M12 - M16	•		10
DFC4710250	200	20	20	M12 - M16	•		10

DESCRIPTION

- Mesh sleeves for using adhesive anchors in hollow base materials

MESH SLEEVES



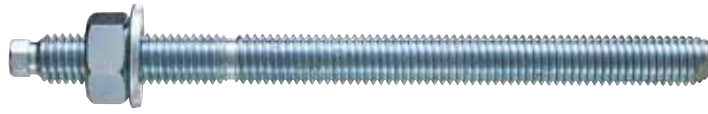
Cat No.	 Length [mm]	 Drill Dia. [mm]	 Diameter [mm]	 Thread Size [mm]	 Box	 Blister Pack	Pack Qty
DFC4730000	1000	12	11	M6	•		1000
DFC4730050	1000	16	15	M8-M10	•		1000
DFC4730100	1000	22	20	M12-M16	•		1000






ADHESIVE ANCHOR ACCESSORIES

DESCRIPTION

- Chisel point rods with zinc plated finish
- Suitable for SC-PRO Spinning capsules
- Includes hex head installation tool

CHISEL POINT THREADED ROD - ZINC PLATED CLASS 5.8 STEEL

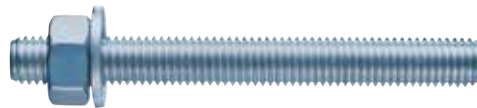


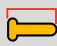




Cat No.	 Length [mm]	 Drill Dia. [mm]	 Thread Size [mm]	 Box	 Blister Pack	Pack Qty
DFC4130000	110	10	M8	•		10
DFC4130050	130	12	M10	•		10
DFC4130100	160	14	M12	•		10
DFC4130150	190	18	M16	•		10

DESCRIPTION

- Straight cut threaded rods
- Suitable for all adhesive cartridge systems

STRAIGHT CUT THREADED ROD - ZINC PLATED CLASS 5.8 STEEL



Cat No.	 Length [mm]	 Drill Dia. [mm]	 Thread Size [mm]	 Box	 Blister Pack	Pack Qty
DFC4130300	110	10	M8	•		10
DFC4130350	140	12	M10	•		10
DFC4130450	165	14	M12	•		25
DFC4130600	190	18	M16	•		10
DFC4130700	260	24	M20	•		5