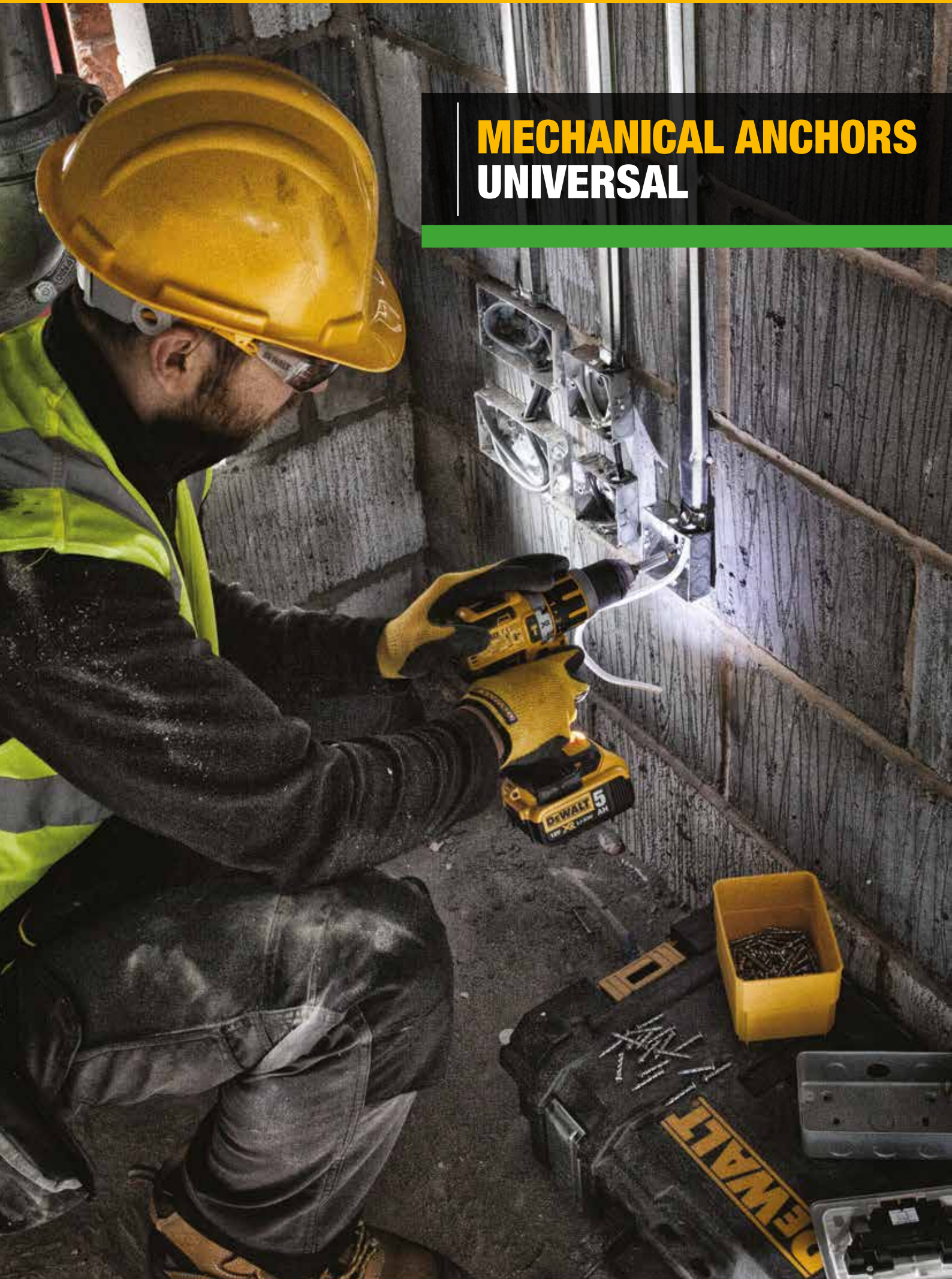


MECHANICAL ANCHORS UNIVERSAL



**HWA MULTI ANCHORS****MULTI-MATERIAL ANCHOR FOR ALL COMMON WALL TYPES**

The HWA Multi is a multi-material fixing, designed for use in all common wall types as well as plasterboard.

Their unique folding mechanism make them extremely versatile and allows them to secure in all common wall types: the arms can fold back against the material for use in hollow walls and plasterboard; expand along its length for solid materials; or twist and expand for use in hollow brick and block.

The anchors are also extremely easy to use and can be installed without the need for a setting tool.

The anchor also features a wide head and anti-rotation spikes to prevent spinning in the material.

- Holds up to 15 kg in hollow walls and solid materials
- Detachable head makes it easy to replaster or fill the surface for a smooth finish
- Engineered with extra grip points for solid fixing
- Long-lasting anti-corrosion treatment

HWA HOLLOW WALL ANCHOR ALSO AVAILABLE FOR PLASTERBOARD. SEE PAGE 78

HWA MULTI ANCHORS

NEW

MECHANICAL ANCHORS

APPLICATIONS

Light to medium duty applications including:

- Coat hooks
- Television brackets
- Kitchen cupboards

MATERIALS



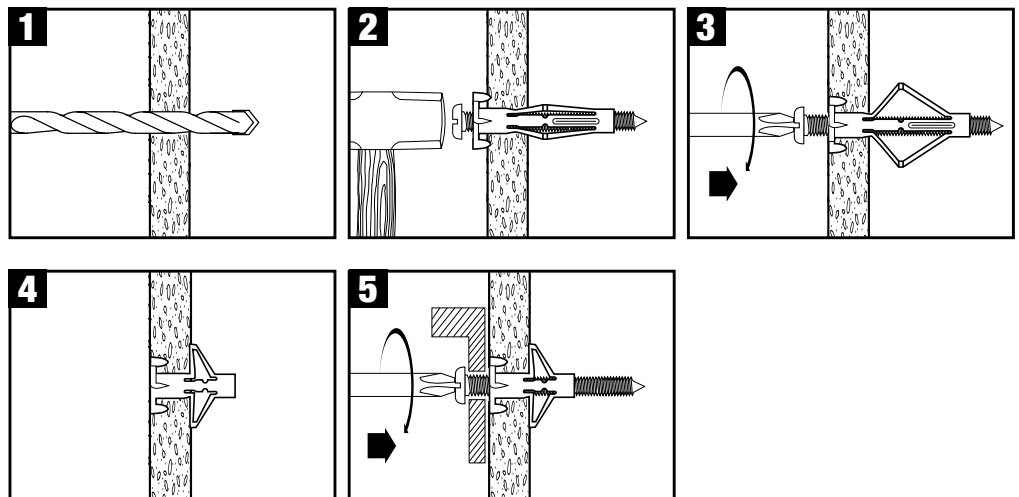
See front cover foldout for details.

PRODUCT OVERVIEW - HWA MULTI ANCHORS

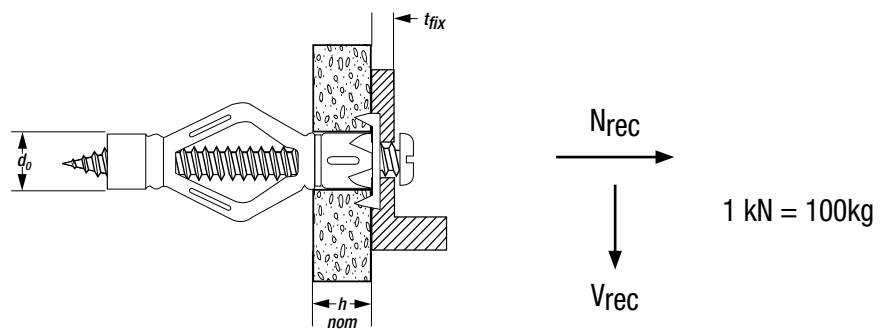


Cat No.	Thread Size [mm]	Length [mm]	Drill Dia. [mm]	Max t_{fix} [mm]	Box	Blister Pack	Pack Qty
DFM4410520	5 x 60		10	15	•		50
DFM441052P	5 x 60		10	15		•	4

INSTALLATION INSTRUCTIONS



TECHNICAL INFORMATION

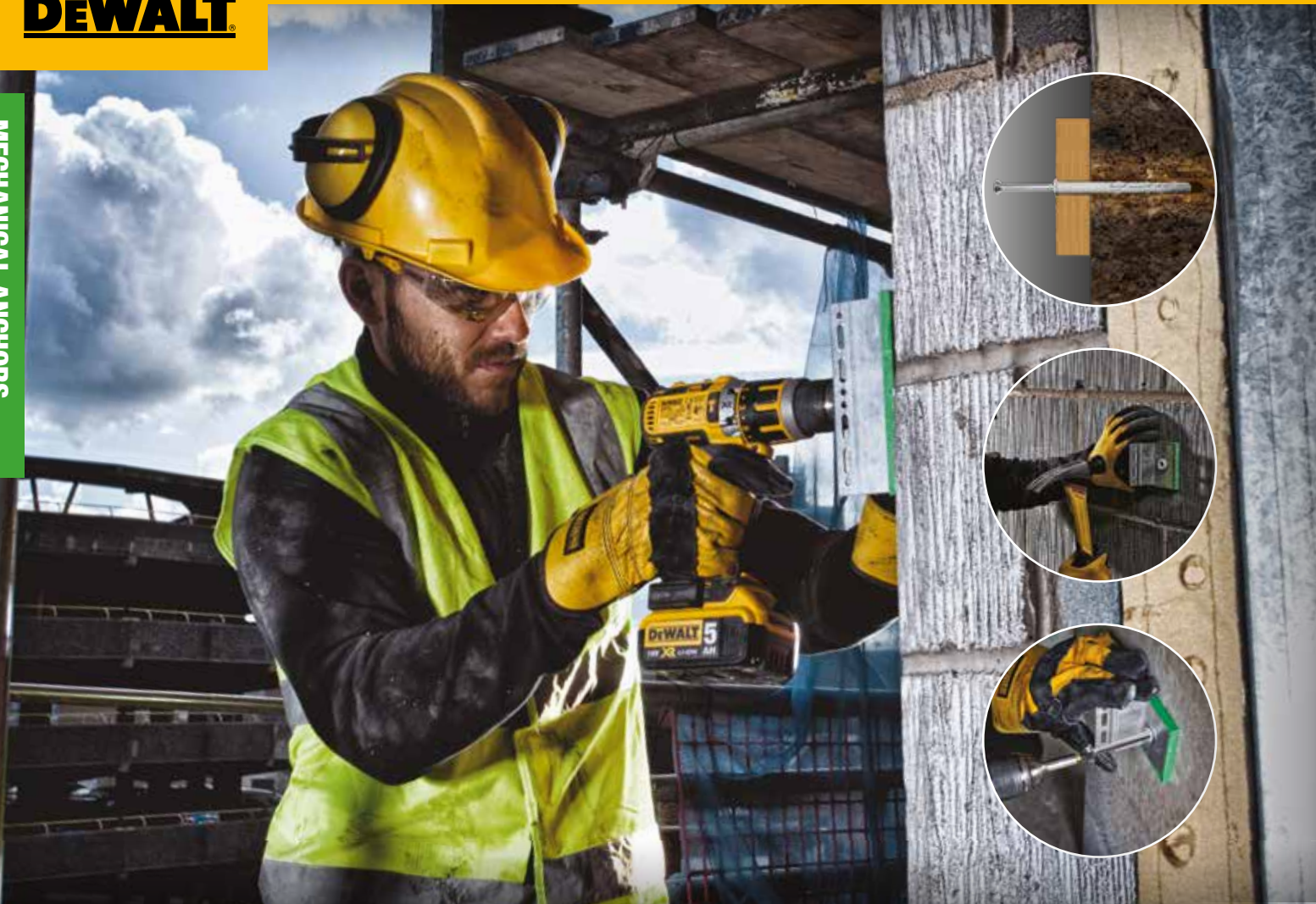


RECOMMENDED LOADS - PLASTERBOARD AND CONCRETE - HWA MULTI

$$\frac{N_{Rk}}{\gamma_M \cdot \gamma_F} = N_{rec}$$

$\gamma_M = 2.1 \quad \gamma_f = 1.4$

Size	d_o [mm]	h_{nom} [mm]	t_{fix} Max [mm]	N_{rec} [kN]	V_{rec} [kN]
5 x 60	10	12.5	15	0.15	0.15

**FRAMID® PRO UNIVERSAL FRAME ANCHORS****UNIVERSAL FRAME ANCHOR**

The **DEWALT® FRAMID® PRO** universal frame anchor is designed for easy installation into a wide range of materials including both solid and hollow substrates. Available with either hex or countersunk heads and a variety of finishes, the anchor includes a high-quality polyamide PA6 plug body.

The large collar of the hex version also provides excellent insulation against water penetration.

- ETAG 020 approved for multiple use in concrete and masonry.
- Fire resistance for fastening of facade systems according to ETAG 020 (Dia 10 mm only).

- Increased load capacity provided by 4 expansion zones and 70mm setting depth.
- Available as zinc plated for indoor use and stainless steel for applications that need a higher corrosion resistance.

**HEX HEAD****COUNTERSUNK HEAD**

FRAMID® PRO UNIVERSAL FRAME ANCHORS

PRODUCT OVERVIEW - FRAMID® PRO HEX - ZINC PLATED

NEW

MECHANICAL ANCHORS

APPLICATIONS

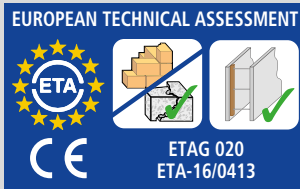
- Facade mounting plates
- Fixing timber to walls
- Supporting brackets
- Pipework brackets
- Window and door frames
- Satellite dish installation

MATERIALS











See front cover foldout for details.

APPROVALS



*Dia 10 mm only



Cat No.									Pack Qty
		Dia. [mm]	Length [mm]	Head Size [mm]	Fitment [mm]	Max t _{fix} [mm]	Box	Blister Pack	
DFM3540000	•		10x80	13	T40	10	•		50
DFM354000P	•		10x80	13	T40	10		•	4
DFM3540010	•		10x100	13	T40	30	•		50
DFM354001P	•		10x100	13	T40	30		•	4
DFM3540020	•		10x120	13	T40	50	•		50
DFM354002P	•		10x120	13	T40	50		•	4
DFM3540030	•		10x140	13	T40	70	•		50
DFM354003P	•		10x140	13	T40	70		•	4
DFM3540040	•		10x160	13	T40	90	•		25
DFM354004P	•		10x160	13	T40	90		•	4
DFM3540050	•		10x180	13	T40	110	•		25
DFM3540060	•		10x200	13	T40	130	•		25
DFM3540070	•		10x230	13	T40	160	•		25

FRAMID® PRO UNIVERSAL FRAME ANCHORS

MECHANICAL ANCHORS

APPLICATIONS

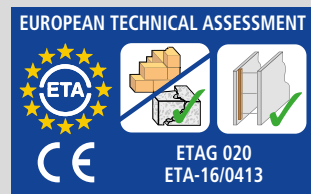
- Facade mounting plates
- Fixing timber to walls
- Supporting brackets
- Pipework brackets
- Window and door frames
- Satellite dish installation

MATERIALS



See front cover foldout for details.

APPROVALS



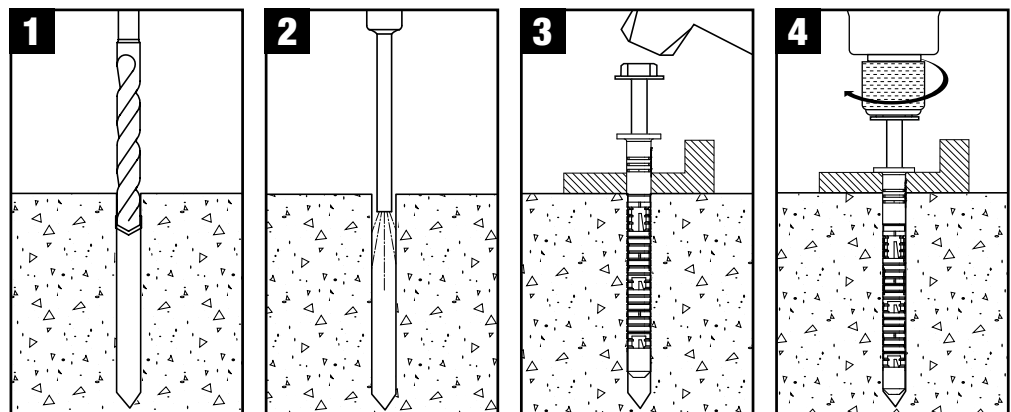
*Dia 10 mm only

PRODUCT OVERVIEW - FRAMID® PRO HEX - A4 STAINLESS STEEL

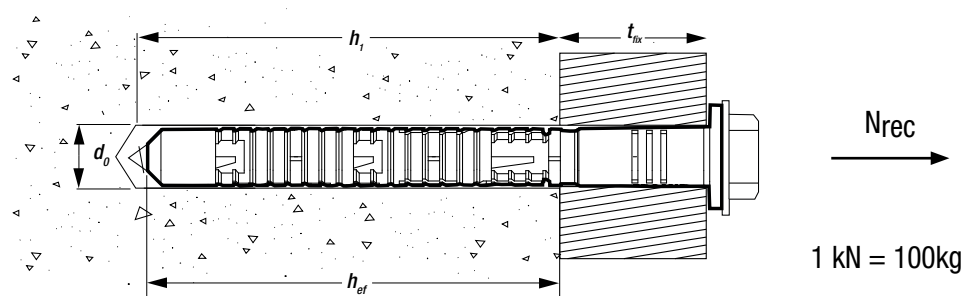


Cat No.									Pack Qty
		Dia. [mm]	Length [mm]	Head Size [mm]	Fitment [mm]	Max t_{fix} [mm]	Box	Blister Pack	
DFM3540840	•	10	80	13	T40	10	•		50
DFM3540850	•	10	100	13	T40	30	•		50
DFM3540860	•	10	120	13	T40	50	•		50
DFM3540870	•	10	140	13	T40	70	•		50
DFM3540880	•	10	160	13	T40	90	•		25
DFM3540890	•	10	180	13	T40	110	•		25
DFM3540900	•	10	200	13	T40	130	•		25
DFM3540910	•	10	230	13	T40	160	•		25

INSTALLATION INSTRUCTIONS



TECHNICAL INFORMATION



ALLOWABLE LOADS - UNCRACKED AND CRACKED CONCRETE - FRAMID® PRO HEX HEAD



$$\frac{N_{Rk}}{\gamma_M \cdot \gamma_F} = N_{all}$$

$$\gamma_f = 1.4$$

Base Material	d_0 [mm]	Drilling method	h_1 [mm]	h_{ef} [mm]	N_{rec} [kN]
Concrete \geq C20/25	10	hammer	80	70	1.6

FRAMID® PRO UNIVERSAL FRAME ANCHORS

APPLICATIONS

- Facade mounting plates
- Timber to walling
- Supporting brackets
- Pipework brackets
- Window and door frames
- Satellite dish installation

MATERIALS



See front cover foldout for details.

APPROVALS



*Dia 10 mm only

PRODUCT OVERVIEW - FRAMID® PRO COUNTERSUNK - ZINC PLATED



Cat No.		Dia. [mm]	Length [mm]	Fitment [mm]	Max t _{fix} [mm]	Box	Blister Pack	Pack Qty
DFM3540390	•	10 x 80	T40	10	•			50
DFM354039P	•	10 x 80	T40	10		•		4
DFM3540400	•	10 x 100	T40	30	•			50
DFM354040P	•	10 x 100	T40	30			•	4
DFM3540410	•	10 x 120	T40	50	•			50
DFM354041P	•	10 x 120	T40	50			•	4
DFM3540420	•	10 x 140	T40	70	•			50
DFM354042P	•	10 x 140	T40	70			•	4
DFM3540430	•	10 x 160	T40	90	•			25
DFM354043P	•	10 x 160	T40	90			•	4
DFM3540440	•	10 x 180	T40	110	•			25
DFM3540450	•	10 x 200	T40	130	•			25
DFM3540460	•	10 x 230	T40	160	•			25
DFM3540470	•	10 x 260	T40	190	•			25
DFM3540480	•	10 x 300	T40	230	•			25

XLR®

SDS-plus®
CARBIDE DRILL BITS
 FOR FAST INSTALLATION
 FROM 5-14 MM DIAMETER



XR FLEX VOLT®

DCH334
 54V XR
 FLEXVOLT
 SDS-plus®
 HAMMER



See page 6 for more information

FRAMID® PRO UNIVERSAL FRAME ANCHORS

MECHANICAL ANCHORS

APPLICATIONS

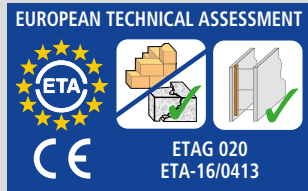
- Facade mounting plates
- Timber to walling
- Supporting brackets
- Pipework brackets
- Window and door frames
- Satellite dish installation

MATERIALS



See front cover foldout for details.

APPROVALS - SS Only



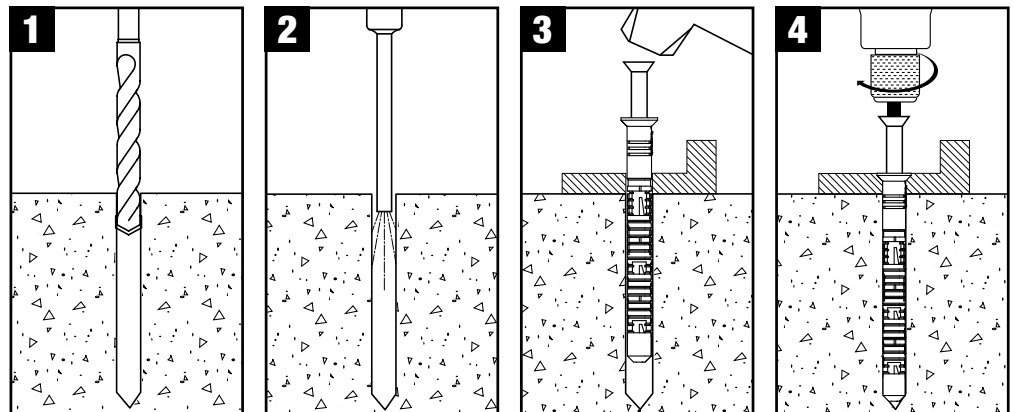
*Dia 10 mm only

PRODUCT OVERVIEW - FRAMID® PRO COUNTERSUNK - A4 STAINLESS STEEL



Cat No.								Pack Qty
		Dia. [mm]	Length [mm]	Fitment [mm]	Max t _{ex} [mm]	Box	Blister Pack	
DFM3540920	•		10 x 80	T40	10	•		50
DFM3540930	•		10 x 100	T40	30	•		50
DFM3540940	•		10 x 120	T40	50	•		50
DFM3540950	•		10 x 140	T40	70	•		50
DFM3540960	•		10 x 160	T40	90	•		25
DFM3540970	•		10 x 180	T40	110	•		25
DFM3540980	•		10 x 200	T40	130	•		25
DFM3540990	•		10 x 230	T40	160	•		25

INSTALLATION INSTRUCTIONS



EXTREME®

**MASONRY DRILL BITS
ROUND SHANK
PERCUSSION**

**UNIQUE DESIGN FOR
MAXIMUM DURABILITY
WITH AN ANTI-SLIP SHANK**



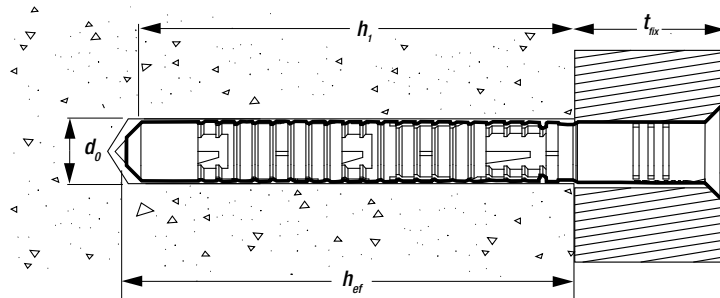
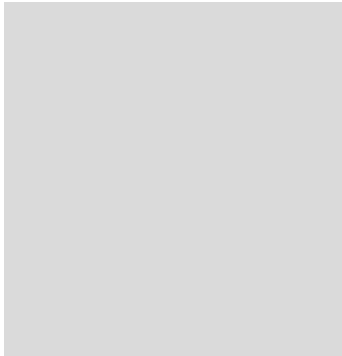
**DCD996
18V XR LI-ION
BRUSHLESS
PREMIUM
HAMMER
DRILL DRIVER**



Visit www.DeWALT.com for more information

FRAMID® PRO UNIVERSAL FRAME ANCHORS

TECHNICAL INFORMATION



N_{rec}
 →
 1 kN = 100kg

MECHANICAL ANCHORS

ETA ALLOWABLE LOADS - UNCRACKED AND CRACKED CONCRETE - FRAMID® PRO COUNTERSUNK



$$\frac{N_{Rk}}{\gamma_M \cdot \gamma_F} = N_{all}$$



$$\gamma_f = 1.4$$

Base Material	d_0 [mm]	Drilling method	h_1 [mm]	h_{ef} [mm]	N_{rec} [kN]
Concrete \geq C20/25	10	hammer	80	70	1.6

XLR®

SDS-plus®
CARBIDE DRILL BITS
 FOR FAST INSTALLATION
 FROM 5-14 MM DIAMETER



XR FLEX VOLT®

DCH334
 54V XR
 FLEXVOLT
 SDS-plus®
 HAMMER



See page 6 for more information

TAPPER-PRO SCREWS

MECHANICAL ANCHORS

DESCRIPTION

- One-piece self-tapping concrete screw for use in a variety of base materials including wood
- Features a corrosion resistant Perma-Seal™ coating and an optimised thread design for low installation torque. The screw also incorporates a gimlet drill point for wood (no pre-drilling required)

APPLICATIONS

- Screen enclosures
- Exterior metal lighting
- Storm shutters
- Marine applications

MATERIALS



See front cover foldout for details.

APPROVALS



PRODUCT OVERVIEW - TAPPER-PRO HEX HEAD SCREWS - PERMA-SEAL™



Cat No.	Thread Size [mm]	Length [mm]	Drill Dia. [mm]	Max t _{fix} [mm]	Box	Blister Pack	Pack Qty
DWT1400100*	6.3 x 32		4.8**	7***	•		100
DWT140010P*	6.3 x 32		4.8**	7***		•	5
DWT1400150*	6.3 x 45		4.8**	1	•		100
DWT140015P*	6.3 x 45		4.8**	1		•	5
DWT1400200*	6.3 x 57		4.8**	13	•		100
DWT140020P*	6.3 x 57		4.8**	13		•	5
DWT1400250*	6.3 x 70		4.8**	26	•		100
DWT1400300*	6.3 x 82		4.8**	38	•		100

*Please refer to the Technical Manual and ICC-ES ESR Report for correct installation instructions. **5.0mm drill diameter may be used, on the understanding that the 'Recommended Loads' are no longer applicable. ***Reduced embedment depth of 25mm, not suitable for ICC-ES approval.

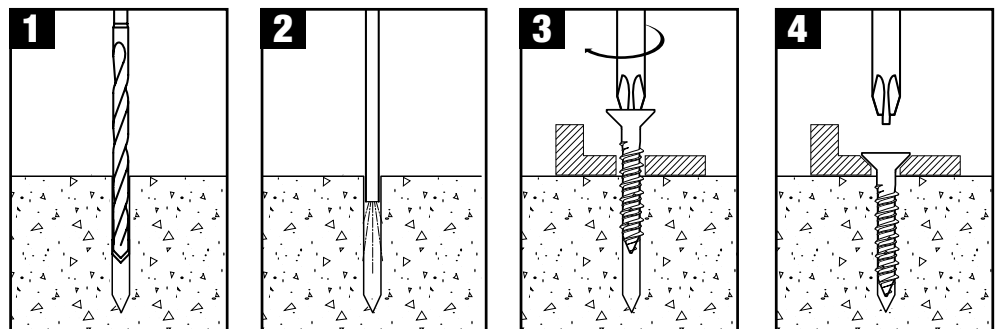
PRODUCT OVERVIEW - TAPPER-PRO COUNTERSUNK SCREWS - PERMA-SEAL™



Cat No.	Thread Size [mm]	Length [mm]	Drill Dia. [mm]	Max t _{fix} [mm]	Box	Blister Pack	Pack Qty
DWT1410650*	4.8 x 57		4	13	•		100
DWT1410700*	4.8 x 70		4	26	•		100
DWT1410850*	4.8 x 101		4	57	•		100
DWT1410100*	6.3 x 32		4.8**	7***	•		100
DWT1410150*	6.3 x 45		4.8**	1	•		100
DWT1410200*	6.3 x 57		4.8**	13	•		100
DWT1410250*	6.3 x 70		4.8**	26	•		100
DWT1410300*	6.3 x 82		4.8**	38	•		100
DWT1410400*	6.3 x 101		4.8**	57	•		100
DWT141040P*	6.3 x 101		4.8**	57		•	5
DWT1410450*	6.3 x 127		4.8**	83	•		100
DWT141045P*	6.3 x 127		4.8**	83		•	5

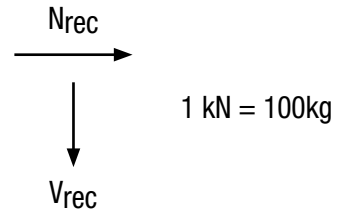
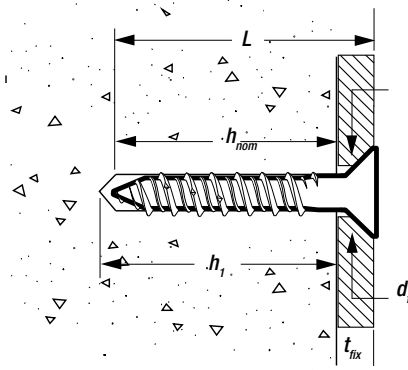
*Please refer to the Technical Manual and ICC-ES ESR Report for correct installation instructions. **5.0mm drill diameter may be used, on the understanding that the 'Recommended Loads' are no longer applicable. ***Reduced embedment depth of 25mm, not suitable for ICC-ES approval.

INSTALLATION INSTRUCTIONS



TAPPER-PRO SCREWS

TECHNICAL INFORMATION



RECOMMENDED LOADS - UNCRACKED CONCRETE - TAPPER-PRO

$$\frac{N_{Rk}}{\gamma_M \cdot \gamma_F} = N_{rec}$$

$\gamma_M = 2.1 \quad \gamma_F = 1.4$

Size - Thread x L [mm]	h_{nom} [mm]	h_1 [mm]	d_f [mm]	t_{fix} [mm]	N_{rec} [kN]
HEX HEAD					
6.3 x 32	25	35	7	7	0.6
6.3 x 45	25	35	7	20	0.6
6.3 x 57	44	54	7	13	1.4
6.3 x 70	44	54	7	26	1.4
6.3 x 82	44	54	7	38	1.4
COUNTERSUNK					
4.8 x 57	25	35	6	32	0.4
4.8 x 70	44	54	6	26	0.8
4.8 x 101	44	54	6	57	0.8
6.3 x 32	25	35	7	7	0.6
6.3 x 45	25	35	7	20	0.6
6.3 x 57	44	54	7	13	1.4
6.3 x 70	44	54	7	26	1.4
6.3 x 82	44	54	7	38	1.4
6.3 x 101	44	54	7	57	1.4
6.3 x 127	44	54	7	83	1.4

XLR[®]

SDS-plus[®]
CARBIDE DRILL BITS
 FOR FAST INSTALLATION
 FROM 5-14 MM DIAMETER



XR FLEX VOLT[®]

DCH334
54V XR
FLEXVOLT
SDS-plus[®]
HAMMER



See page 6 for more information

ISO METAL INSULATION FIXINGS

MECHANICAL ANCHORS

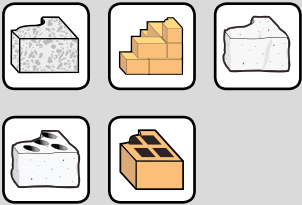
DESCRIPTION

- One piece metal insulation fixing
- Time saving design using simple hammer set installation

APPLICATIONS

- For fixing insulation materials beneath cladding / facade panels where non-flammable materials are specified

MATERIALS



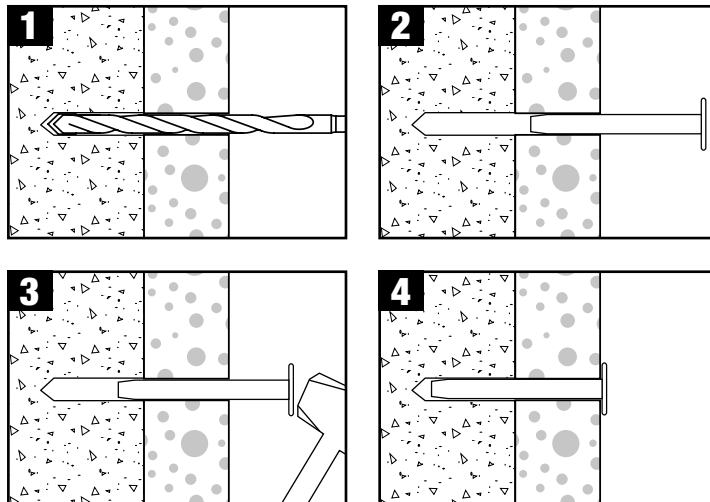
See front cover foldout for details.

PRODUCT OVERVIEW - ISO ZINC PLATED



Cat No.	Drill Dia. [mm]	Length [mm]	Max t _{fix} [mm]	Head Dia. [mm]	Box	Blister Pack	Pack Qty
DFM3150000	8 x 90	40	35	•		50	
DFM3150050	8 x 110	60	35	•		50	
DFM3150100	8 x 140	90	35	•		50	
DFM3150150	8 x 170	120	35	•		50	

INSTALLATION INSTRUCTIONS



EXTREME[®]

**MASONRY DRILL BITS
ROUND SHANK
PERCUSSION**

**UNIQUE DESIGN FOR
MAXIMUM DURABILITY
WITH AN ANTI-SLIP SHANK**

2x LONG LIFE



**DCD996
18V XR LI-ION
BRUSHLESS
PREMIUM
HAMMER
DRILL DRIVER**



Visit www.DeWALT.com for more information

PX-U UNIVERSAL PLUGS

NEW

MECHANICAL ANCHORS

DESCRIPTION

- Nylon universal fixing
- Expansion in solid building materials, reliable knot formation in all hollow building materials
- Suitable for wood and chipboard screws

APPLICATIONS

General light duty fittings including:

- Pictures
- Skirting
- Curtain rails
- Motion sensors

MATERIALS



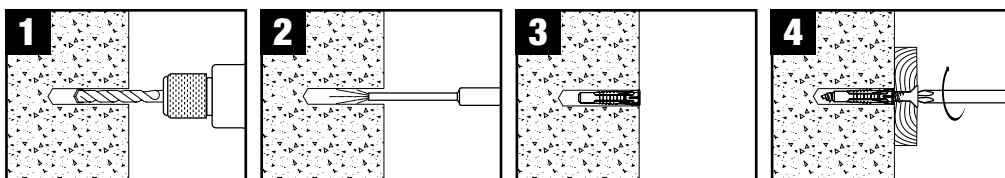
See front cover foldout for details.

PRODUCT OVERVIEW

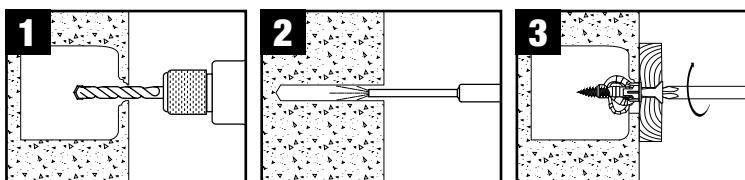


Cat No.	Drill Dia. [mm]	Length [mm]	Box	Blister Pack	Pack Qty
DFM3461000	6	30	•		100
DFM346100P	6	30		•	20
DFM3461050	8	40	•		100
DFM346105P	8	40		•	10
DFM3461100	10	50	•		100
DFM346110P	10	50		•	6

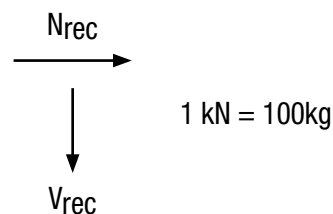
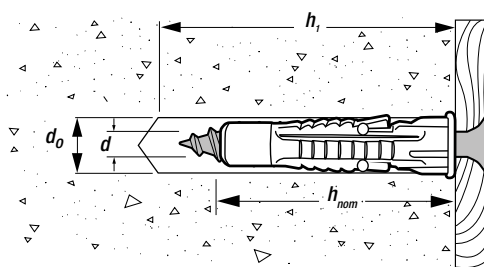
INSTALLATION INSTRUCTIONS (SOLID MATERIAL)



INSTALLATION INSTRUCTIONS (HOLLOW MATERIAL)



TECHNICAL INFORMATION



RECOMMENDED LOADS - UNCRACKED CONCRETE - PX-U



$$\frac{N_{Rk}}{\gamma_M \cdot \gamma_F} = N_{rec}$$

$\gamma_M = 2.1 \quad \gamma_F = 1.4$

Size = d ₀ x Length [mm]	d [mm]	h _{nom} [mm]	h ₁ [mm]	N _{rec} & V _{rec} (kN)
6 x 30	4 to 5	30	40	0.2
8 x 40	4.5 to 6	40	50	0.3
10 x 50	7 to 8	50	60	0.5



WALL DOG® SCREW ANCHORS

MULTI-MATERIAL FASTENER - NO PLUG, ALL STEEL, MULTI-PURPOSE

Non combustible all metal fixings for fixed and demountable cable trays, sockets and conduit. Fully compliant with the latest fire safety Wiring Regulations BS 7671:2008 from the Institution of Engineering and Technology.

- An all steel, tension-free, one piece, threaded fastener
- Use to fasten various fixtures directly to plasterboard, wood, concrete, sand-lime stone or brickwork
- Multi-material fastener - no plugs required*
- No pre-drilling required in wood and plasterboard
- Approved by D-Line® for use with the Safe-D Clip® system
- Quick and easy to install
- Non combustible
- Fire safety - complies with amendment 3 of the Institution of Engineering and Technology new wiring regulations

*4mm pre-drilled hole may be required in some masonry materials. Site test is recommended to determine suitability.



WALL DOG® SCREW ANCHORS

DESCRIPTION

- An all steel, expansion free, one piece, threaded fastener
- Use to fasten fixtures directly to plasterboard, wood, concrete, sand-lime stone or brickwork
- No plug needed
- No pre-drilling required in wood and plasterboard*
- Approved by D-Line® for use with the Safe-D Clip® system

APPLICATIONS

Light to medium duty applications including:

- Curtain tracks
- Electrical sockets and switches, trunking, back boxes and conduit
- Installing fire clips

MATERIALS



See front cover foldout for details.

*4mm pre-drilled hole may be required in some masonry materials. Site test is recommended to determine suitability.

PRODUCT OVERVIEW - COUNTERSUNK



Cat No.	Head Colour	Length [mm]	Head Size [mm]	Max t _{fix} [mm]	Box	Blister Pack	Pack Qty
DFM424000P	White	32	8	3		•	100
DFM424050P	White	32	8	3		•	10
DFM424015P	Chrome	32	8	3		•	100
DFM424055P	Chrome	32	8	3		•	10

PRODUCT OVERVIEW - PAN HEAD



Cat No.	Head Colour	Length [mm]	Head Size [mm]	Max t _{fix} [mm]	Box	Blister Pack	Pack Qty
DFM425000P	White	32	8	3		•	100
DFM425050P	White	32	8	3		•	10
DFM425005P	Chrome	32	8	3		•	100
DFM425055P	Chrome	32	8	3		•	10

PRODUCT OVERVIEW - COUNTERSUNK - T25 RECESS

NEW



Cat No.	Head Colour	Length [mm]	Head Size [mm]	Max t _{fix} [mm]	Box	Blister Pack	Pack Qty
DFM4230025	Chrome	50	9	21	•		100
DFM4230070	Chrome	70	9	41	•		100

PRODUCT OVERVIEW - PAN HEAD - T25 RECESS

NEW

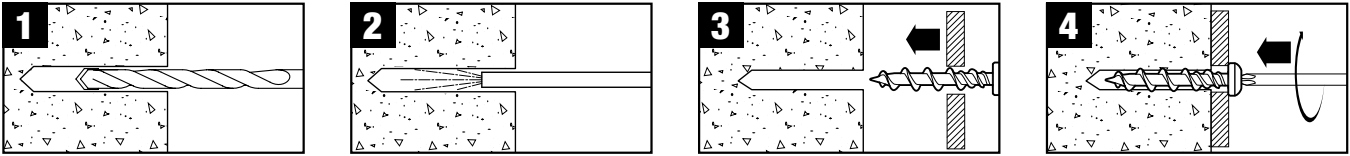


Cat No.	Head Colour	Length [mm]	Head Size [mm]	Max t _{fix} [mm]	Box	Blister Pack	Pack Qty
DFM4260025	Chrome	50	9	21	•		100
DFM4260070	Chrome	70	9	41	•		100

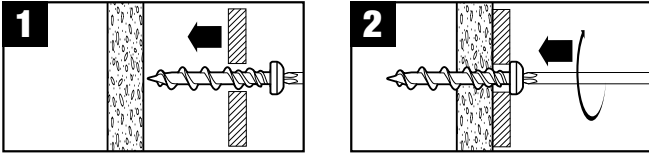
MECHANICAL ANCHORS

WALL DOG® SCREW ANCHORS

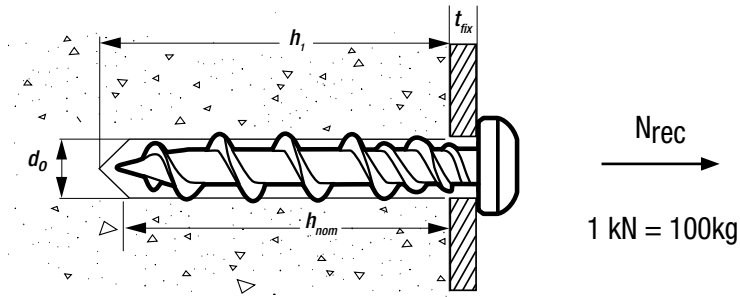
INSTALLATION INSTRUCTIONS (SOLID MATERIAL)



INSTALLATION INSTRUCTIONS (HOLLOW MATERIAL)



TECHNICAL INFORMATION



RECOMMENDED LOADS - UNCRACKED CONCRETE - WALL DOG®

$$\frac{N_{Rk}}{\gamma_M \cdot \gamma_F} = N_{rec}$$

$\gamma_M = 2.1 \quad \gamma_F = 1.4$

Size	h_{nom} [mm]	h_1 [mm]	d_o [mm]	t_{fix} [mm]	N_{rec} [kN]
CSK-32-Chrome	29	35	5	3	0.3
CSK-32-White	29	35	5	3	0.3
PAN-32-Chrome	29	35	5	3	0.3
PAN-32-White	29	35	5	3	0.3
CSK-50 T25-Chrome	29	35	5	21	0.3
CSK-70 T25-Chrome	29	35	5	41	0.3
PAN-50 T25-Chrome	29	35	5	21	0.3
PAN-70 T25-Chrome	29	35	5	41	0.3

EXTREME®

**MASONRY DRILL BITS
ROUND SHANK
PERCUSSION**

**UNIQUE DESIGN FOR
MAXIMUM DURABILITY
WITH AN ANTI-SLIP SHANK**

2x LONG LIFE



**DCD996
18V XR LI-ION
BRUSHLESS
PREMIUM
HAMMER
DRILL DRIVER**



Visit www.DeWALT.com for more information

SHARKIE™ PLASTIC WALL ANCHORS

DESCRIPTION

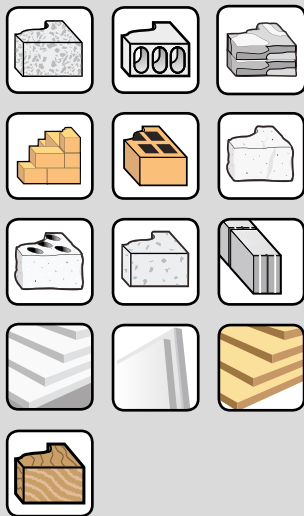
- Multi-purpose wall anchor
- The anchor moulds and conforms exactly to the surface of the hole
- Won't spin or countersink into the hole

APPLICATIONS

General light duty fittings including:

- Shelving
- Bathroom accessories
- Flat screen TV brackets
- Draperies
- Curtain rods and blinds

MATERIALS



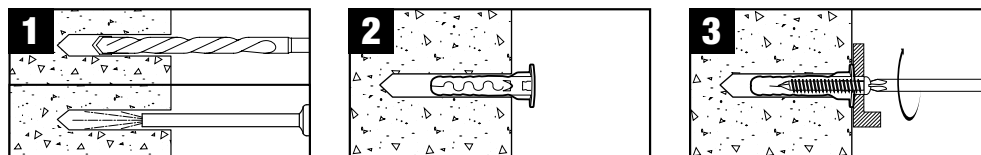
See front cover foldout for details.

PRODUCT OVERVIEW

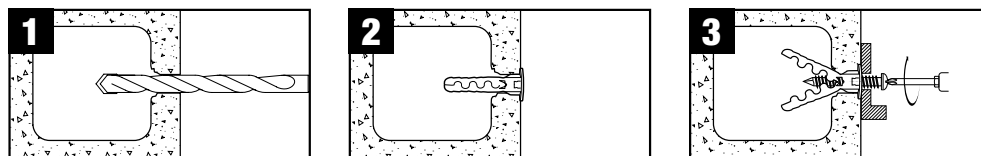


Cat No.	Drill Dia. [mm]	Length [mm]	Box	Blister Pack	Pack Qty
DFM4460050		6 x 30	•		100
DFM4460100		8 x 40	•		100

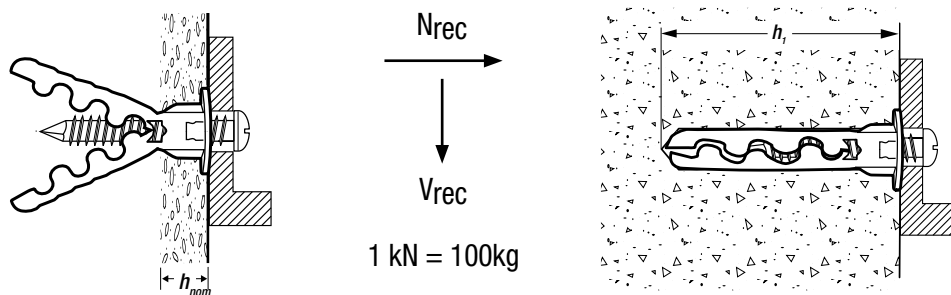
INSTALLATION INSTRUCTIONS (SOLID MATERIAL)



INSTALLATION INSTRUCTIONS (HOLLOW MATERIAL)



TECHNICAL INFORMATION



RECOMMENDED LOADS - UNCRACKED CONCRETE - SHARKIE™

$$\frac{N_{Rk}}{\gamma_M \cdot \gamma_F} = N_{rec}$$

$\gamma_M = 2.1 \quad \gamma_f = 1.4$

Size - Drill Dia. x Length [mm]	Screw dia	h_{nom} [mm]	h_1 [mm]	N_{rec} [kN]
6 x 30	4	27	35	0.20
8 x 40	4	37	45	0.24

RECOMMENDED LOADS - PLASTERBOARD - SHARKIE™

$$\frac{N_{Rk}}{\gamma_M \cdot \gamma_F} = N_{rec}$$

12.5mm
 $\gamma_M = 2.1 \quad \gamma_f = 1.4$

Size - Drill Dia. x Length [mm]	h_{nom} [mm]	N_{rec} [kN]
6 x 30	12.5	0.05
8 x 40	12.5	0.06

VERTIGO™ HANGERS

MECHANICAL ANCHORS

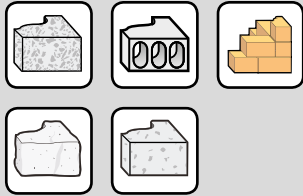
DESCRIPTION

- All steel self-tapping threaded fastening system
- For suspending steel threaded rod vertically overhead

APPLICATIONS

- Hanging pipes
- Sprinkler systems
- Lighting systems
- Suspended ceilings

MATERIALS



See front cover foldout for details.

PRODUCT OVERVIEW - CONCRETE HANGER - ZINC PLATED



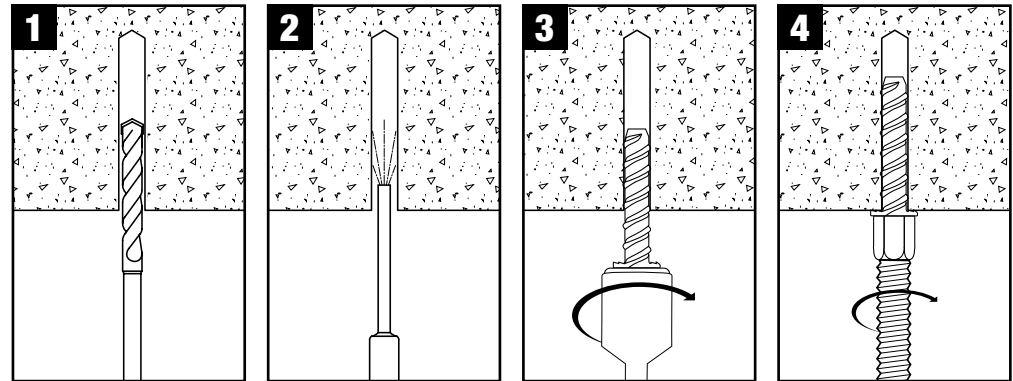
USE THE CORRECT SETTING TOOL
- SEE PAGE 101 FOR DETAILS



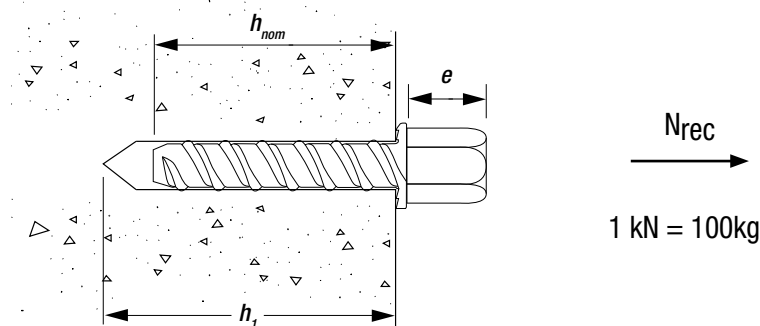
Cat No.	Thread Size [mm]	Length [mm]	Head Length [mm]	Drill Dia. [mm]	Head Size [mm]	Box	Blister Pack	Pack Qty
DFM2220050	M8 x 39	16	16	6.5*	13	•		50
DFM2220100	M10 x 39	16	16	6.5*	13	•		50

*ANSI bit size 1/4"

INSTALLATION INSTRUCTIONS



TECHNICAL INFORMATION



RECOMMENDED LOADS - UNCRACKED CONCRETE - VERTIGO™ CONCRETE HANGER - ZINC PLATED



$$\frac{N_{Rk}}{\gamma_M \cdot \gamma_F} = N_{rec}$$

$\gamma_M = 2.1 \quad \gamma_F = 1.4$

Size - Thread x h_{nom} [mm]	h_1 [mm]	e_{min} [mm]	N_{rec} (kN)
M8 x 39	49	12	1.3
M10 x 39	49	12	1.3

VERTIGO™ HANGERS

DESCRIPTION

- One-piece, all steel threaded fastening system for suspending steel threaded rod
- Self-tapping
- Specifically designed for wood frame columns and beams

APPLICATIONS

- Hanging pipes
- Sprinkler systems
- Lighting systems
- Suspended ceilings

MATERIALS



See front cover foldout for details.

PRODUCT OVERVIEW - WOOD HANGER - ZINC PLATED

NEW

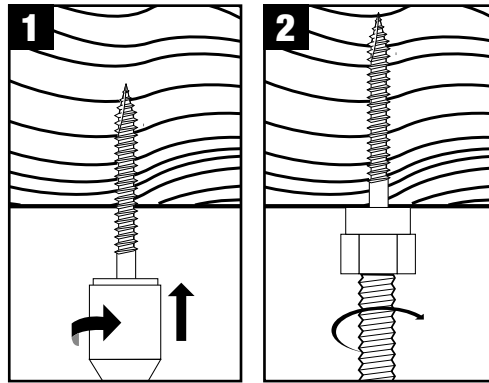


USE THE CORRECT SETTING TOOL
- SEE PAGE 101 FOR DETAILS

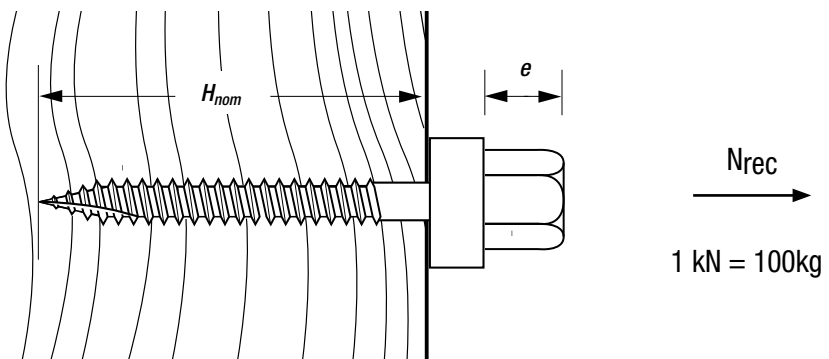


Cat No.	Thread Size [mm]	Length [mm]	Head Length [mm]	Head Size [mm]	Box	Blister Pack	Pack Qty
DFM2250050	M8 x 50		20	16	•		100
DFM2250100	M10 x 50		20	16	•		100

INSTALLATION INSTRUCTIONS



TECHNICAL INFORMATION



RECOMMENDED LOADS - VERTIGO™ WOOD HANGER - ZINC PLATED



$$\frac{N_{Rk}}{\gamma_M \cdot \gamma_F} = N_{rec}$$

$\gamma_M = 2.1 \quad \gamma_F = 1.4$

Size = Thread x h ₁ [mm]	e _{min} [mm]	N _{rec} [kN]
M6 x 50	10	1.3
M8 x 50	10	1.3
M10 x 50	10	1.3

VERTIGO™ HANGERS

MECHANICAL ANCHORS

DESCRIPTION

- All steel threaded fastening system for suspending steel threaded rod
- Specifically designed for steel bar joists and beams

APPLICATIONS

- Hanging pipes
- Sprinkler systems
- Lighting systems
- Suspended ceilings

MATERIALS



See front cover foldout for details.

PRODUCT OVERVIEW - STEEL HANGER - ZINC PLATED

NEW

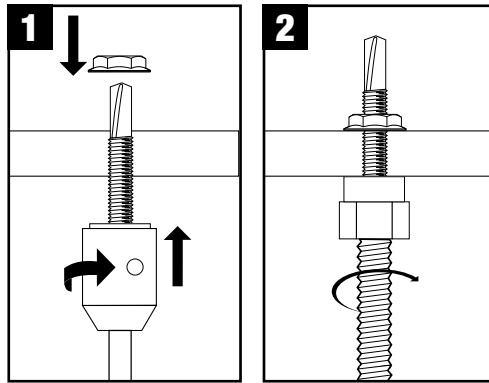


USE THE CORRECT SETTING TOOL
- SEE PAGE 101 FOR DETAILS

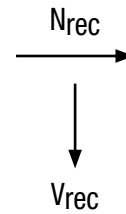
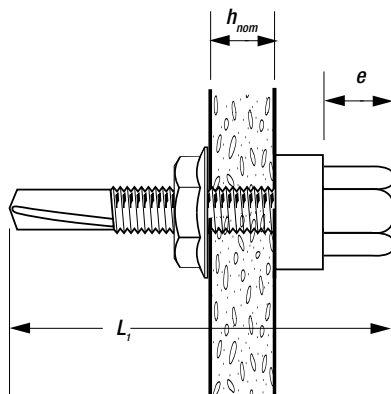


Cat No.	Thread Size [mm]	Length [mm]	Head Length [mm]	Head Size [mm]	Box	Blister Pack	Pack Qty
DFM2230100	M8 x 25		20	16	•		100
DFM2230150	M8 x 32		20	16	•		100

INSTALLATION INSTRUCTIONS



TECHNICAL INFORMATION



1 kN = 100kg

RECOMMENDED LOADS - VERTIGO™ STEEL HANGER - ZINC PLATED



$$\frac{N_{RK}}{\gamma_M \cdot \gamma_F} = N_{rec}$$

$\gamma_M = 2.1 \quad \gamma_f = 1.4$

Size = Thread x L ₁ [mm]	h _{nom} [mm]	e _{min} [mm]	N _{rec} [kN]
M8 x 25	2-5	10	1.3
M8 x 32	2-5	10	1.3

VERTIGO™ INSTALLATION TOOLS

DESCRIPTION

- Installation tools for Vertigo Hangers

PRODUCT OVERVIEW - INSTALLATION TOOL FOR CONCRETE



Cat No.	Type	Box	Blister Pack	Pack Qty
DFM2200100	Concrete M8/M10	•		5

PRODUCT OVERVIEW - INSTALLATION TOOL FOR WOOD AND STEEL

NEW



Cat No.	Type	Box	Blister Pack	Pack Qty
DFM2200000	Wood and steel	•		5