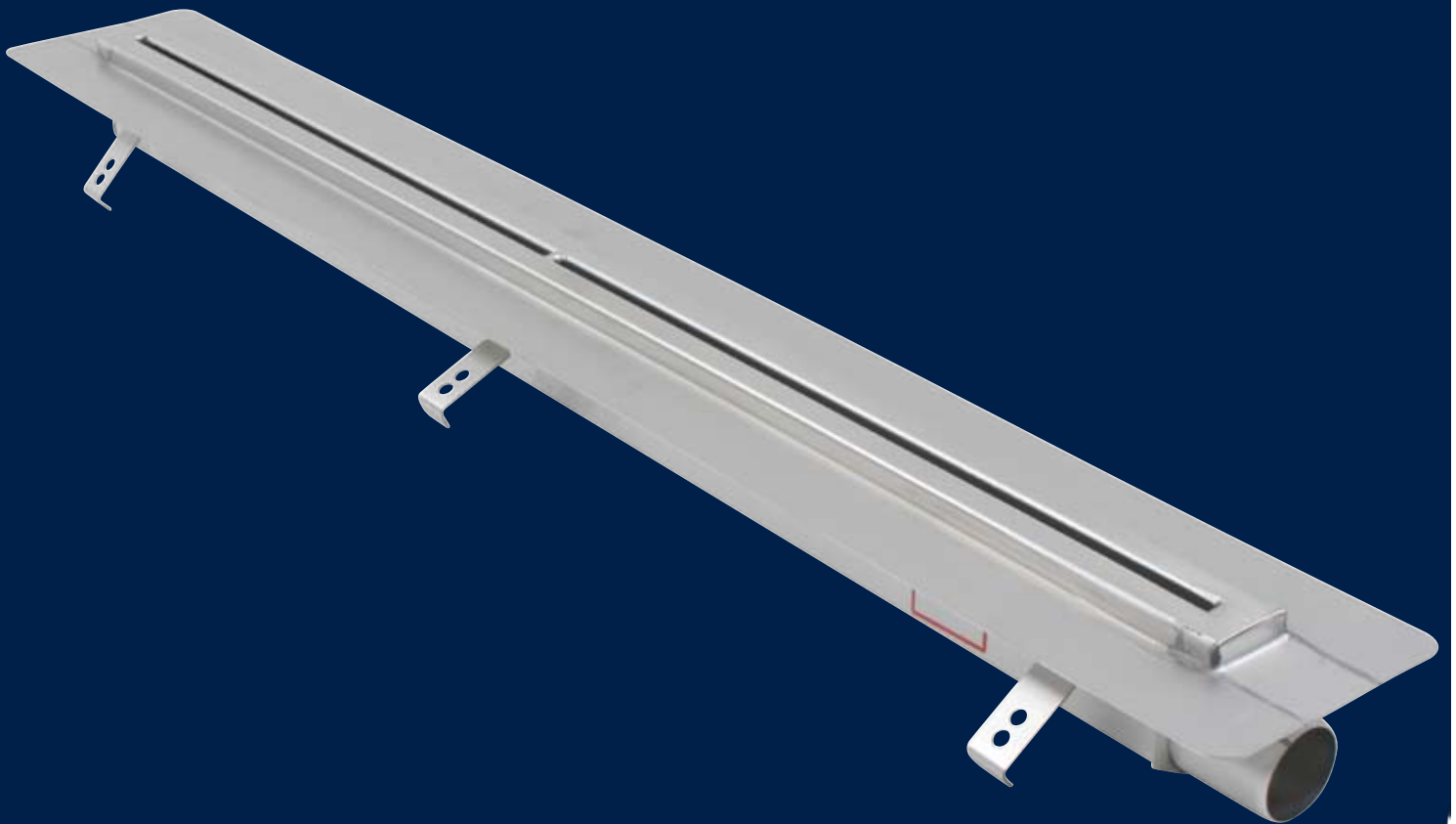


BLÜCHER® CHANNEL TYPE 677



Slot channel with 8 mm aperture for barefoot areas

- For showers, changing rooms and around swimming pools
- Suitable for tiled or epoxy flooring
- With 50 mm flange for liquid membrane



KEEPING UP THE FLOW

Slot channel with 8 mm aperture approved for barefoot areas

- For showers, changing rooms and pool side
- Suitable for tiled and epoxy flooring
- With 50 mm flange for liquid membrane
- All in stainless steel

Designed for commercial applications such as shower rooms, in door openings of changing facilities or around swimming pools, BLÜCHER® Channel type 677 is designed with a slot width of max. 8 mm and is approved for barefoot areas.

The channel has a 50 mm liquid membrane flange to ensure that it is suitable for wet rooms. The flange is located 14 mm below the top of the channel frame, and consequently the channel is suitable for tiled/epoxy flooring of 6 to 12 mm thickness.

Channel type 677 has a matt-polished frame, and no weldings are visible from the top. The channel comes with Ø50 mm horizontal outlet at the channel end and can easily be connected to a "P" water trap or a central collecting unit using BLÜCHER® EuroPipe stainless steel pipes and fittings.

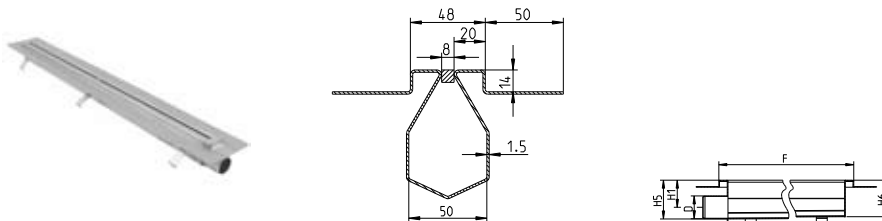
The channel is available in four different lengths: 1,0 meter - 1,5 meters - 2,0 meters - 3,0 meters

All in stainless steel the BLÜCHER® Channel range and the entire BLÜCHER® drainage system provides aesthetically pleasing, hygienic and practically maintenance-free drainage that will last for decades. The inherent qualities of stainless steel combined with careful product design ensures ease of installation and easy cleaning.

For technical details see www.blucher.com

SLOT CHANNEL TYPE 677

END OUTLET



Type no.	EAN no.	D	F	H1	H5	H6
677AN010-00BA		50	1000	60	85	80
677AN015-00BA		50	1500	60	85	77
677AN020-00BA		50	2000	60	85	75
677AN030-00BA		50	3000	60	85	70



KEEPING UP THE FLOW