



Vic-300™ MasterSeal™ Butterfly Valve

SERIES 761

[Download publication 08.20](#) for complete information

- Designed for bi-directional, dead end services to full working pressure
- Available without handle, with gear operator, with lever lock handle and memory stop, or with 10-position handle and memory stop
- Multiple seat and disc material options available
- Sizes from 2–12" | DN50–DN300
- Pressures up to 300 psi | 2068 kPa | 21 bar
- For AGS sizes 14–24" | DN350–DN600, [download publication 20.06](#) for information on Series W761

Certifications/Listings:



[Download publication 10.01](#) for Fire Protection Certifications/Listings

[Download publication 02.06](#) for ANSI/NSF Potable Water Approvals/Listings



Butterfly Valve

SERIES 700

[Download publication 08.05](#) for complete information

- Two-piece stem permits narrow disc design for low pressure drop performance
- Supplied standard with aluminum bronze disc, 316 stainless steel optional
- Sizes from 1½–6" | DN40–DN150
- Pressures up to 200 psi | 1379 kPa | 14 bar

Certifications/Listings:



[Download publication 10.01](#) for Fire Protection Certifications/Listings

Original Groove System (OGS)



High Pressure *Vic-Check* Valve

SERIES 716H

[Download publication 08.08](#) for complete information

- Features a stainless steel disc which seats against the o-ring seal, when mounted on the electroless nickel plated face
- Sizes from 2–3" | DN50–DN80
- Pressures up to 365 psi | 2517 kPa | 25 bar
- For AGS sizes 14–24" | DN350–DN600, [download publication 20.08](#) for information on Series W715

Certifications/Listings:



[Download publication 10.01](#) for Fire Protection Certifications/Listings



Vic-Check Valve

SERIES 716

[Download publication 08.08](#) for complete information

- Features an elastomer encapsulated disc and a welded in nickel seat
- Sizes from 2½–12" | 73.0 mm–DN300
- Pressures up to 300 psi | 2068 kPa | 21 bar
- For AGS sizes 14–24" | DN350–DN600, [download publication 20.08](#) for information on Series W715

Certifications/Listings:



[Download publication 10.01](#) for Fire Protection Certifications/Listings



Venturi Check Valve

SERIES 779

[Download publication 08.10](#) for complete information

- Check valve with integrated venturi with pressure taps for accurate measurement (flow measuring kit for differential pressure gauges/meters available)
- Sizes from 4–12" | DN100–DN300
- Pressures up to 300 psi | 2068 kPa | 21 bar

Certifications/Listings:



[Download publication 10.01](#) for Fire Protection Certifications/Listings



Certifications/Listings:



[Download publication 10.01](#) for Fire Protection Certifications/Listings

Swing Check Valve

SERIES 712

[Download publication 08.11](#) for complete information

- Designed for use with Victaulic® grooved fittings and couplings for fast installation on inlet and outlet ports
- Large access bonnet for easy maintenance
- Available with internal coating for corrosive services
- Sizes from 2–4" | DN50–DN100
- Pressures up to 300 psi | 2068 kPa | 21 bar
- For more information on swing check valves for stainless steel, see pg. 63
- Regional availability, contact [Victaulic](#) for details



Certifications/Listings:



[Download publication 10.01](#) for Fire Protection Certifications/Listings

Swing Check Valve

SERIES 713

[Download publication 08.54](#) for complete information

- High pressure check valve designed for use with *Victaulic* grooved fittings and couplings for fast installation on inlet and outlet ports
- Large access bonnet for easy maintenance
- Available with internal coating for corrosive services
- Sizes from 2–4" | DN50–DN100
- Pressures up to 1000 psi | 6895 kPa | 69 bar
- Regional availability, contact [Victaulic](#) for details



Vic-Ball Valve

SERIES 721

[Download publication 08.14](#) for complete information

- Floating ball with standard port, reduces torque requirements
- Sizes from 4–6" | DN100–DN150
- Pressures up to 800 psi | 5515 kPa | 55 bar

Original Groove System (OGS)

**Vic-Ball Valve**

SERIES 726

[Download publication 08.23](#) for complete information

- High pressure standard port NACE-compliant ball valve
- Available without handle, with a lever operator, or a gear operator
- Sizes from 1½–6" | DN40–DN150
- Pressures up to 1000 psi | 6895 kPa | 69 bar

Certifications/Listings:


[Download publication 10.01](#) for Fire Protection Certifications/Listings
**Ball Valve**

SERIES 727

[Download publication 08.42](#) for complete information

- High pressure enhanced port NACE-compliant ball valve
- Up to ⅓ better flow than competitive standard port ball valves
- Floating ball with standard port, reduces torque requirements
- Sizes from 2–6" | DN50–DN150
- Pressures up to 1500 psi | 10342 kPa | 103 bar

**Brass Body Ball Valve — Threaded**

SERIES 722

[Download publication 08.15](#) for complete information

- Standard port, female threaded end valve constructed from forged brass
- Sizes from ¼–2" | DN8–DN50
- Pressures up to 600 psi | 4137 kPa | 41 bar

Certifications/Listings:


[Download publication 10.01](#) for Fire Protection Certifications/Listings



Vic-Plug Valve

SERIES 377

[Download publication 08.12](#) for complete information

- Only eccentric grooved end plug valve made specifically for throttling services
- Available without handle, with lever operator or gear operator
- Sizes from 3–12" | DN80–DN300
- Pressures up to 175 psi | 1207 kPa | 12 bar



Delta-Y Valve Assembly

STYLE DLY

[Download publication 07.08](#) for complete information

- Assembles with Style 107N rigid couplings, Series 761 Vic-300™ MasterSeal™ butterfly valves, and cast fittings
- Ideal for bulk cement/barite systems commonly found on offshore drilling platforms
- Sizes from 5–6" | 141.3 mm–DN150
- Pressures up to 300 psi | 2068 kPa | 21 bar



Knife Gate Valve

SERIES 795

[Download publication 08.25](#) for complete information

- Designed for fluid lines containing solids and abrasive materials
- All wear parts can be replaced in-line without removing the valve from the pipeline
- Utilizes Installation-Ready™ technology to eliminate loose parts
- Manual, hydraulic, pneumatic, and electric actuation available
- Sizes from 3–12" | DN80–DN300
- Pressures up to 150psi | 1035 kPa | 10 bar

Certifications/Listings:



[Download publication 10.01](#) for Fire Protection Certifications/Listings

Original Groove System (OGS)



OS&Y Gate Valve

SERIES 771M

[Download publication 08.45](#) for complete information

- Available as groove x groove or groove x flange
- For On/Off service only
- Sizes from 2½–12" | 73.0mm–DN300
- Pressures up to 250 psi | 1724 kPa | 17 bar

Certifications/Listings:

This product is not agency listed for fire protection service.

[Download publication 10.92](#) for fire service products.



Three Port Diverter

SERIES 723

[Download publication 08.13](#) for complete information

- NACE MR-01-75 compliant, three-port ball valve with common bottom inlet for diverting flow 90° left or right
- Available without handle, with lever operator or gear operator
- Available in 2" | DN50
- Pressures up to 600 psi | 4137 kPa | 41 bar



Diverter Valve

SERIES 725S

[Download publication 08.41](#) for complete information

- Intended for backfill and flush water diversion in backfill mining operations
- May be operated under pressure to dump backfill in the event of a blockage
- Stainless steel wetted surfaces
- Manual, hydraulic, pneumatic, and electric actuation available
- Available in 4–8" | DN100–DN200
- Pressures up to 1500 psi | 10342 kPa | 103 bar

Certifications/Listings:



[Download publication 10.01](#) for Fire Protection Certifications/Listings



Hydraulic Control Valve

BERMAD SERIES 100 | VICTAULIC® SERIES 910

[Download publication Engineering 100](#)
for complete information

- Hydraulic control valves are devices capable of controlling variables such as pressure, flow, or level
- Optional configurations include: on/off, pressure reducing, pressure relief, pressure sustaining, and flow control (customized solutions can include combinations of the above functions)
- Sizes from 1½–6" | DN40–DN150
- Pressures up to 145 psi | 1000 kPa | 10 bar
- Regional availability, contact [Victaulic](#) for details



Hydraulic Control Valve

BERMAD SERIES 700 | VICTAULIC® SERIES 970

[Download publication Engineering 700](#)
for complete information

- Hydraulic control valves are devices capable of controlling variables such as pressure, flow, or level
- Optional configurations include: on/off, pressure reducing, pressure relief, pressure sustaining, and flow control (customized solutions can include combinations of the above functions)
- Sizes from 1½–48" | DN40–DN1200
- Pressures up to 400 psi | 2758 kPa | 28 bar
- Regional availability, contact [Victaulic](#) for details



Hydraulic Control Valve

BERMAD SERIES 800 | VICTAULIC® SERIES 980

[Download publication Engineering 800](#)
for complete information

- Hydraulic control valves are devices capable of controlling variables such as pressure, flow, or level
- Optional configurations include: on/off, pressure reducing, pressure relief, pressure sustaining, and flow control (customized solutions can include combinations of the above functions)
- Sizes from 1½–20" | DN40–DN500
- Pressures up to 600 psi | 4137 kPa | 41 bar
- Regional availability, contact [Victaulic](#) for details

Original Groove System (OGS)



Automatic Air Release Valve

BERMAD SERIES A30 | VICTAULIC® SERIES 9A3

[Download publication Engineering A30](#)
for complete information

- Automatic air release valves allow efficient release of air bubbles from pressurized pipelines
- Body material: Glass reinforced nylon
- Sizes from $\frac{3}{4}$ –1" | DN20–DN25
- Pressures up to 230 psi | 1586 kPa | 16 bar
- Temperatures up to 140°F | 60°C
- Regional availability, contact [Victaulic](#) for details



Automatic Air Release Valve

BERMAD SERIES A71 | VICTAULIC® SERIES 9A7

[Download publication Engineering A71](#)
for complete information

- Automatic air release valves allow efficient release of air bubbles from pressurized pipelines
- Body material: Type 316 stainless steel
- Sizes from $\frac{3}{4}$ –1" | DN20–DN25
- Pressures up to 350 psi | 2413 kPa | 24 bar
- Temperatures up to 140°F | 60°C
- Regional availability, contact [Victaulic](#) for details



Combination Air Valve

BERMAD SERIES C30 | VICTAULIC® SERIES 9C3

[Download publication Engineering C30](#)
for complete information

- Combination air release valves release air bubbles from pressurized pipelines (air release valve), while evacuating air during pipeline filling and draining (air/vacuum valve)
- Body material: Glass reinforced nylon
- Sizes from $\frac{3}{4}$ –1" | DN20–DN25
- Pressures up to 230 psi | 1586 kPa | 16 bar
- Temperatures up to 140°F | 60°C
- Regional availability, contact [Victaulic](#) for details



Combination Air Valve

BERMAD SERIES C50 | VICTAULIC® SERIES 9C5

[Download publication Engineering C50](#)
for complete information

- Combination air release valves release air bubbles from pressurized pipelines (air release valve), while evacuating air during pipeline filling and draining (air/vacuum valve)
- Body material: Glass reinforced nylon
- Sizes from 2–4" | DN50–DN100
- Pressures up to 150 psi | 1034 kPa | 10 bar
- Temperatures up to 140°F | 60°C
- Regional availability, contact [Victaulic](#) for details



Combination Air Valve

BERMAD SERIES C70 | VICTAULIC® SERIES 9C7

[Download publication Engineering C70](#)
for complete information

- Combination air release valves release air bubbles from pressurized pipelines (air release valve), while evacuating air during pipeline filling and draining (air/vacuum valve)
- Body material: Ductile iron (standard)
- Sizes from 2–8" | DN50–DN200
- Pressures up to 580 psi | 3999 kPa | 40 bar
- Temperatures up to 140°F | 60°C
- Regional availability, contact [Victaulic](#) for details

Original Groove System (OGS)



Certifications/Listings:



[Download publication 10.01](#) for Fire Protection Certifications/Listings

Suction Diffuser

SERIES 731-D

[Download publication 09.20](#) for complete information

- Allows building up at a 90° angle from the pump, saving valuable space in the mechanical room while still protecting the pump against cavitation
- Available flanged connections: ANSI Class 150, Australian Standard Table E, PN10/16, GB, and JIS 10K
- Sizes from 3–12" | DN80–DN300
- Pressures up to 300 psi | 2068 kPa | 21 bar
- For AGS sizes 14–24" | DN350–DN600, [download publication 20.20](#) for information on Series W731-D



Certifications/Listings:



[Download publication 10.01](#) for Fire Protection Certifications/Listings

Vic-Strainer Tee Type

SERIES 730

[Download publication 09.02](#) for complete information

- Lighter than flanged Y-type strainers and provides straight-through flow for lower pressure drop
- Sizes from 1½–12" | DN40–DN300
- Pressures up to 750 psi | 5171 kPa | 52 bar
- For AGS sizes 14–24" | DN350–DN600, [download publication 20.11](#) for information on Series W730



Certifications/Listings:



[Download publication 10.01](#) for Fire Protection Certifications/Listings

Vic-Strainer Wye Type

SERIES 732

[Download publication 09.03](#) for complete information

- Provides straight-through flow for lower pressure drop
- Sizes from 2–12" | DN50–DN300
- Pressures up to 300 psi | 2068 kPa | 21 bar
- Available in limited sizes for air handling units
- For AGS sizes 14–24" | DN350–DN600, [download publication 20.19](#) for information on Series W732

Original Groove System (OGS)



Vic-Header

No. 26

[Download publication 07.11](#) for complete information

- An outlet header for any mechanical room application
- Available with Victaulic® OGS and AGS grooved ends
- Sizes from ¾ – 24" | DN20 – DN600
- Pressures up to 300 psi | 2068 kPa | 21 bar
- Regional availability, contact [Victaulic](#) for details

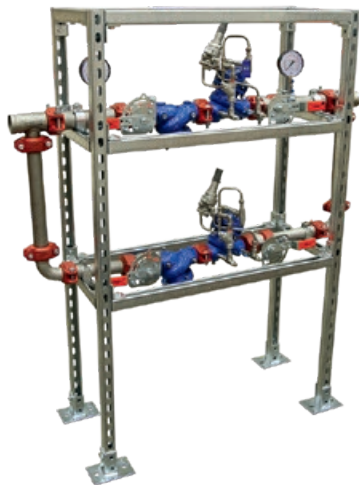


Vibration Isolation Air Handling Unit Drop

SERIES 385

[Download publication 102.15](#) for complete information

- Provides hook-ups for isolation, straining, balancing and draining
- Swing joint solves misaligned coil challenges
- Single and double supply and return configurations
- Sizes from 2 × 2" through 6 × 4" | DN50 × DN50 through DN150 × DN100
- Pressures up to 300 psi | 2068 kPa | 21 bar
- Regional availability, contact [Victaulic](#) for details



Pressure Reducing Valve Station

SERIES 386

[Download publication 102.16](#) for complete information

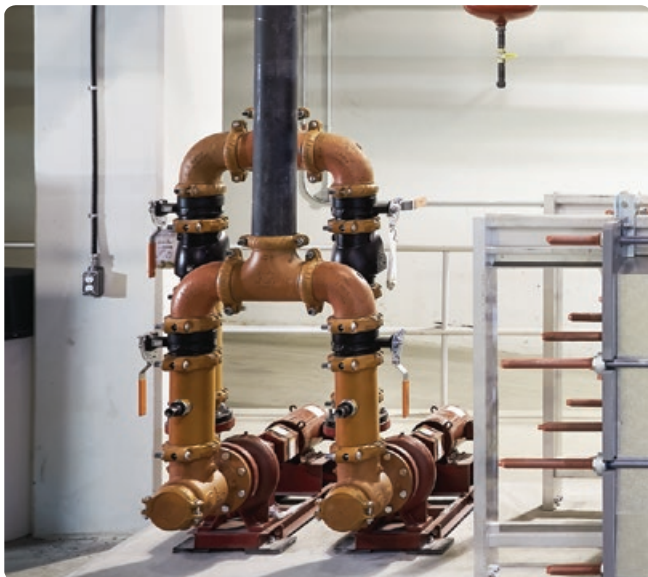
- Reduces and controls potable water system pressure to specified safe levels, independent of upstream pressure and flow variations
- Six standard configurations to accommodate various system flow rates, pressure reduction ratios, redundancy, and pressure safety options
- Sizes from 2 × 1½" through 6 × 2" | DN50 × DN40 through DN150 × DN50
- Pressures up to 300 psi | 2068 kPa | 21 bar
- Regional availability, contact [Victaulic](#) for details

Certifications/Listings:



[Download publication 02.06](#) for ANSI/NSF Potable Water Approvals/Listings

Original Groove System (OGS)



Inlet Vibration Isolation Pump Drop

- Includes flow control, vibration-controlling flexible couplings, access ports for gauges and thermowells, and an integral flanged or grooved end pump connection
- Sizes from 3–12" | DN80–DN300
- Rated to the working pressure of the ANSI Class 150, PN10/16, Australian Table E or JIS 10K flange connection
- Regional availability, contact [Victaulic](#) for details

Suction Diffuser Pump Drop

Painted Carbon Steel Pipe

- **Series 381/381G**
(North America)
[Download publication 102.11](#)
- **Series 391**
(Rest of World)
[Download publication 102.21](#)
- **Series 331**
(Hong Kong)
[Download publication 102.31](#)



Galvanized Carbon Steel Pipe

- **Series 331**
(Hong Kong)
[Download publication 102.31](#)
- **Series 334**
(Taiwan)
[Download publication 102.34](#)
- **Series 337**
(Korea)
[Download publication 102.37](#)



Strainer Pump Drop

Painted Carbon Steel Pipe (Vertical and Horizontal Installations)

- **Series 382/382G**
(North America)
[Download publication 102.12](#)
- **Series 392**
(Rest of World)
[Download publication 102.22](#)
- **Series 332**
(Hong Kong)
[Download publication 102.32](#)



Galvanized Carbon Steel Pipe (Vertical and Horizontal Installations)

- **Series 332**
(Hong Kong)
[Download publication 102.32](#)





Outlet Vibration Isolation Pump Drop

- Includes flow control, vibration-controlling flexible couplings, access ports for gauges and thermowells, and an integral flanged or grooved end pump connection
- Sizes from 3–12" | DN80–DN300
- Rated to the working pressure of the ANSI Class 150, PN10/16, Australian Table E or JIS 10K flange connection
- Regional availability, contact [Victaulic](#) for details

Discharge Pump Drop

Painted Carbon Steel Pipe
(Vertical and Horizontal Installations)

- **Series 380/380G**
(North America)
[Download publication 102.10](#)
- **Series 390**
(Rest of World)
[Download publication 102.22](#)
- **Series 330**
(Hong Kong)
[Download publication 102.30](#)



Galvanized Carbon Steel Pipe
(Vertical Installations)

- **Series 330**
(Hong Kong)
[Download publication 102.30](#)
- **Series 333**
(Taiwan)
[Download publication 102.33](#)
- **Series 336**
(Korea)
[Download publication 102.36](#)



Discharge Pump Drop with Balancing Valve

Painted Carbon Steel Pipe
(Vertical and Horizontal Installations)

- **Series 383/383G**
(North America)
[Download publication 102.13](#)



Original Groove System (OGS)



EndSeal™ System

[Download publication 06.13](#) for STYLE HP-70ES coupling

[Download publication 07.03](#) for ES fittings

- For plastic coated pipe or high pressure rigid systems
- Schedule 80 wall thickness for use with HP-70ES couplings
- Coupling sizes from 2–12" | DN50–DN300 and fitting sizes from 2–6" | DN50–DN150
- Pressures up to 2500 psi | 17237 kPa | 172 bar
- Regional availability, contact [Victaulic](#) for details



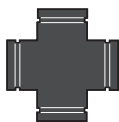
No. 62ES
90° Elbow



No. 63ES
45° Elbow



No. 64ES
Tee



No. 35ES
Cross



No. 22ES
Header Tee

