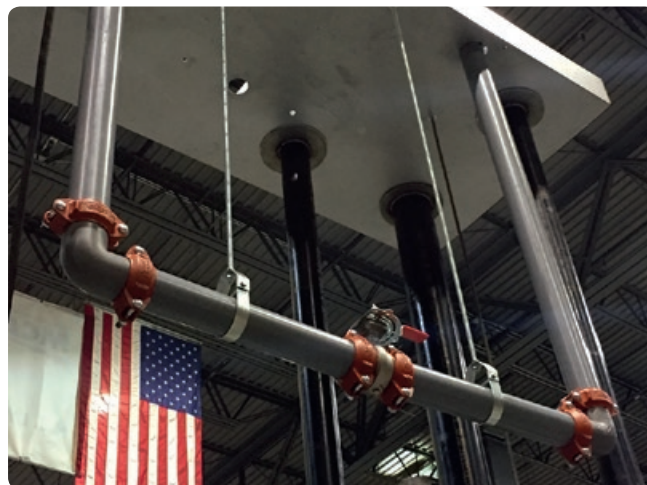


## CPVC/PVC System






Victaulic now offers the industry's first and only grooved piping system designed exclusively for use on Schedules 40 and 80 chlorinated polyvinyl chloride/polyvinyl chloride (CPVC/PVC) pipe featuring Victaulic's proprietary PGS-300 groove profile. Available in sizes 2–12" | DN50–DN300, the system includes a full line of Installation-Ready™ couplings, fittings and pipe preparation tools. This system solution offers the fastest, cleanest installation method for CPVC/PVC pipe and eliminates several drawbacks associated with traditional joining methods.

[Download publication 02.06](#) for ANSI/NSF Potable Water Approvals/Listings

### PGS™-300



To learn more visit [victaulic.com/cpvc/solutions](http://victaulic.com/cpvc/solutions)

Couplings		page	Fittings		page
	Installation-Ready Rigid Coupling (Style 357)	116		PGS-300 Grooved End Fittings	117
	Installation-Ready Transition Coupling (Style 356)	116	<b>Expansion Joint</b>		
	Reducing Coupling (Style 358)	116		PGS-300 Grooved End Expansion Joint (Style 355)	118
			<b>Pipe Preparation Tool</b>		<b>page</b>
				Cut Grooving Tool for Plastic Pipe (CG1100)	135



## Installation-Ready™ Rigid Coupling STYLE 357

[Download publication 33.07](#) for complete information

- Exclusively for use on CPVC/PVC pipe featuring Victaulic's proprietary PGS-300 groove profile
- Sizes from 2–12" | DN50–DN300
- Refer to the publication for maximum pressure ratings and temperature reduction factors
- Regional availability, contact [Victaulic](#) for details

### Certifications/Listings:



[Download publication 02.06](#) for ANSI/NSF Potable Water Approvals/Listings



## Installation-Ready™ Transition Coupling STYLE 356

[Download publication 33.06](#) for complete information

- Provides a direct, single coupling connection for Victaulic® PGS-300 grooved end CPVC/PVC pipe or fittings to *Victaulic* Original Groove System (OGS) grooved end IPS or stainless steel pipe, fittings or valves of the same nominal size
- Sizes from 2–12" | DN50–DN300
- Refer to the publication for maximum pressure ratings and temperature reduction factors
- Regional availability, contact [Victaulic](#) for details

### Certifications/Listings:



[Download publication 02.06](#) for ANSI/NSF Potable Water Approvals/Listings



## Reducing Coupling STYLE 358

[Download publication 33.08](#) for complete information

- Exclusively for use on CPVC/PVC pipe featuring Victaulic's proprietary PGS-300 groove profile
- Sizes from 2½ × 2" – 10 × 8" | 73.0 mm × DN50 – DN250 × DN200
- Refer to the publication for maximum pressure ratings and temperature reduction factors
- Regional availability, contact [Victaulic](#) for details

### Certifications/Listings:



[Download publication 02.06](#) for ANSI/NSF Potable Water Approvals/Listings

## CPVC/PVC System



## PGS-300 Grooved End Fittings

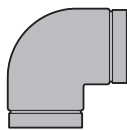
[Download publication 33.03](#) for complete information

- Exclusively for use on CPVC/PVC pipe featuring Victaulic's proprietary PGS-300 groove profile
- Sizes from 2–12" | DN50–DN300
- Refer to the publication for maximum pressure ratings and temperature reduction factors
- Regional availability, contact [Victaulic](#) for details

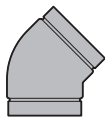
## Certifications/Listings:



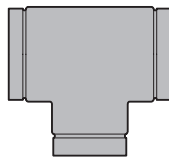
[Download publication 02.06](#) for ANSI/NSF Potable Water Approvals/Listings



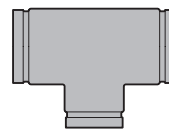
**No. 350**  
90° Elbow



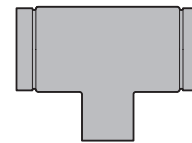
**No. 351**  
45° Elbow



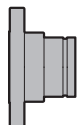
**No. 352**  
Tee



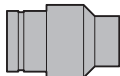
**No. 353**  
Reducing Tee  
(Groove × Groove  
× Groove)



**No. 354**  
Reducing Tee  
(Groove × Groove  
× Socket)



**No. 359F**  
Flange Adapter  
(Groove × Flange)



**No. 361**  
Reducing Adapter  
(Groove × Socket)



## PGS-300 Grooved End Expansion Joint

### STYLE 355

[Download publication 33.05](#) for complete information

- Exclusively for use on CPVC/PVC pipe featuring Victaulic's proprietary PGS-300 groove profile
- Provides increased axial expansion and full axial movement at each joint
- Combination of Style 357 rigid couplings and short grooved nipples, joined in tandem to provide increased expansion
- Victaulic® Grade "EHP" gasket is UL Classified in accordance with ANSI/NSF 61 and 372 for potable water service
- Sizes from 2–12" | DN50–DN300
- Refer to the publication for maximum pressure ratings and temperature reduction factors
- Regional availability, contact [Victaulic](#) for details