



FlameGuard® Product

FlameGuard® CPVC Fire Sprinkler Pipe, Fittings, Valves & Solvent Cement

# FlameGuard® CPVC Fire Sprinkler Piping Products



## PRODUCT

Contact Spears® for any Information not found.

FlameGuard® Product  
FlameGuard® Overview



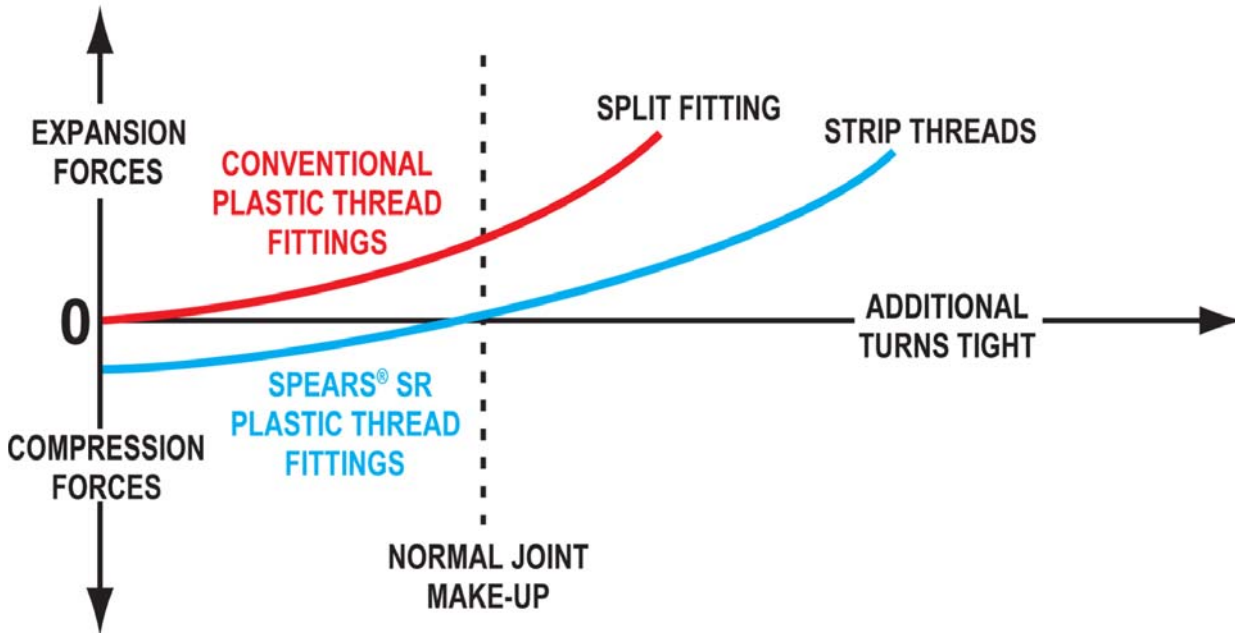
SPEARS® Patented SR Design Sprinkler Head Adapters



SPEARS® Patented Special Reinforced (SR) plastic female thread design is one of the most significant advancements in the use of CPVC Fire Sprinkler System threaded fittings. Not just an added ring, this unique precompression design compensates for expansion forces generated from tapered pipe thread joint make-up. Radial stress is no longer a problem in normal installations and easily managed in severe over-tightening situations.

Contains and Compensates for Radial Stress...

Radial stress, generated by tightening of tapered pipe threads, exerts tremendous expansion force on female plastic thread fittings. When subjected to over-tightening - even accidentally - these forces can literally split the fitting. Spears® patented SR Adapter design not only alleviates this problem by containing expansion forces with its special reinforced collar, but additionally compensates for expansion stress through thermoplastic material compression. Stresses are equalized at normal joint make-up. The following graph illustrates this effect in a comparison of conventional plastic female thread fittings with Spears® SR adapters when taken to failure.



*Another Quality SPEARS® Product Designed for Performance, Customer Satisfaction and Service.*



FlameGuard® Product

FlameGuard® CPVC Fire Sprinkler Piping Products

FlameGuard® CPVC Fire Sprinkler Piping Products

Part Number	Size	Std Pk	Mstr Ctn	Prod Code	MSRP
-------------	------	--------	----------	-----------	------

Pipe - FlameGuard® CPVC Fire Sprinkler Plain End

SDR 13.5 10' Lengths



Price Per Foot

CP-007-10	3/4	260	0	071	2.10
CP-010-10	1	170	0	071	3.25
CP-012-10	1-1/4	90	0	071	5.08
CP-015-10	1-1/2	70	0	071	7.02
CP-020-10	2	50	0	071	10.49
CP-025-10	2-1/2	40	0	071	16.02
CP-030-10	3	30	0	071	24.34

Pipe - FlameGuard® CPVC Fire Sprinkler Plain End

SDR 13.5, 15' Lengths



Price Per Foot

CP-007	3/4	390	0	071	2.10
CP-010	1	255	0	071	3.25
CP-012	1-1/4	135	0	071	5.08
CP-015	1-1/2	105	0	071	7.02
CP-020	2	75	0	071	10.49
CP-025	2-1/2	60	0	071	16.02
CP-030	3	45	0	071	24.34

Tee



Socket x Socket x Socket

4201-007	3/4	20	220	070	4.40
4201-010	1	15	120	070	8.91
4201-012	1-1/4	10	0	070	13.31
4201-015	1-1/2	10	0	070	19.58
4201-020	2	10	0	070	28.91
4201-025	2-1/2	10	0	070	47.09
4201-030	3	5	0	070	73.80

GripLoc™ Tee



**WARNING: DO NOT INSERT FINGERS**  
EPDM Gasket

Uses No Solvent Cement - NSF® Certified Lead Free  
175 psi (1.21 Mpa) @ 150° F (66°C)

GL4201-007	3/4	15	0	134	41.68
GL4201-010	1	1	15	134	47.32

Part Number	Size	Std Pk	Mstr Ctn	Prod Code	MSRP
-------------	------	--------	----------	-----------	------

Reducing Tee



Socket x Socket x Socket

4201-102	3/4X1	20	0	070	7.53
4201-125	1X3/4X3/4	15	150	070	7.53
4201-126	1X3/4X1	15	0	070	7.53
4201-131	1X3/4	20	0	070	7.53
4201-157	1-1/4X1X3/4	15	0	070	13.88
4201-158	1-1/4X1X1	15	0	070	13.88
4201-159	1-1/4X1X1-1/4	15	0	070	13.88
4201-167	1-1/4X3/4	15	0	070	13.88
4201-168	1-1/4X1	15	0	070	13.88
4201-169	1-1/4X1-1/2	10	0	070	16.77
4201-201	1-1/2X1-1/4X3/4	10	0	070	16.77
4201-202	1-1/2X1-1/4X1	10	0	070	16.77
4201-210	1-1/2X3/4	15	0	070	16.77
4201-211	1-1/2X1	10	0	070	16.77
4201-212	1-1/2X1-1/4	10	0	070	16.77
4201-213	1-1/2X2	10	0	070	26.60
4201-248	2X3/4	10	0	070	26.60
4201-249	2X1	10	0	070	26.60
4201-250	2X1-1/4	10	0	070	26.60
4201-251	2X1-1/2	10	0	070	26.60
4201-289	2-1/2X1	10	0	070	36.58
4201-290	2-1/2X1-1/4	10	0	070	36.58
4201-291	2-1/2X1-1/2	10	0	070	36.58
4201-292	2-1/2X2	10	0	070	36.58
4201-335	3X1	5	0	070	42.22
4201-336 <sup>1</sup>	3X1-1/4	5	0	070	42.22
4201-337	3X1-1/2	5	0	070	42.22
4201-338	3X2	5	0	070	42.22
4201-339	3X2-1/2	6	0	070	42.22

<sup>1</sup> Outlet sized with Bushing

GripLoc™ Extension Tee



Socket x Socket x GripLoc™  
**WARNING: DO NOT INSERT FINGERS**  
EPDM Gasket

Uses No Solvent Cement - NSF® Certified Lead Free  
175 psi (1.21 Mpa) @ 150° F (66°C)

GLS4201-010	1	1	15	134	24.93
-------------	---	---	----	-----	-------

SofTorque™ SR Sprinkler Head Tee - Gasket  
Sealed Special Reinforced Plastic Thread Style

Socket x SR Fipt - Stainless Steel Collar With  
Elastomer Seal - Use NO Thread Sealant



NSF® Certified Lead Free

4202-101GSR	3/4X1/2	50	0	076	16.29
4202-124GSR	1X3/4X1/2	50	0	076	17.60
4202-130GSR	1X1/2	20	0	076	17.60

**FlameGuard® Product**  
**FlameGuard® CPVC Fire Sprinkler Piping Products**



**FlameGuard® CPVC Fire Sprinkler Piping Products**

Part Number	Size	Std Pk	Mstr Ctn	Prod Code	MSRP
-------------	------	--------	----------	-----------	------

**TorqueSafe™ Sprinkler Head Tee - Gasket Sealed Brass Thread Insert Style**

**Socket x Socket x Gasket Fipt With Elastomer Seal - Use NO Thread Sealant**



4202-101 G	3/4X1/2	50	0	076	16.29
4202-124 G	1X3/4X1/2	50	0	076	17.60
4202-130 G	1X1/2	50	0	076	17.60
4202-131 G	1X3/4	50	0	076	19.06
4202-166 G	1-1/4X1/2	15	0	076	29.34
4202-209 G	1-1/2X1/2	10	0	076	38.65
4202-247 G	2X1/2	10	0	076	54.51

FIPT With Elastomer Seal - Use NO Thread Sealant.

**Not intended to convey or dispense water for human consumption through drinking or cooking**

**Sprinkler Head Tee - Brass Thread Insert Style**

**Socket x Socket x Fipt**



4202-101	3/4X1/2	50	0	076	16.29
4202-124	1X3/4X1/2	50	0	076	17.60
4202-130	1X1/2	50	0	076	17.60
4202-010	1	10	40	076	45.25
4202-156	1-1/4X1X1/2	15	0	076	29.34
4202-166	1-1/4X1/2	15	0	076	29.34
4202-199	1-1/2X1-1/4X1/2	10	0	076	38.65
4202-209	1-1/2X1/2	10	0	076	38.65
4202-237	2X1-1/2X1/2	10	0	076	54.51
4202-247	2X1/2	10	0	076	54.51

**Not intended to convey or dispense water for human consumption through drinking or cooking**

**Sprinkler Head Tee - Special Reinforced Plastic Thread Style**

**Socket x Socket x SR Fipt - Stainless Steel Collar**



NSF® Certified Lead-Free

4202-010SR	1	15	0	076	24.04
4202-101SR	3/4X1/2	50	0	076	8.67
4202-124SR	1X3/4X1/2	50	0	076	9.38
4202-130SR	1X1/2	50	0	076	9.38
4202-131SR	1X3/4	15	0	076	19.06
4202-156SR	1-1/4X1X1/2	15	0	076	15.62
4202-166SR	1-1/4X1/2	15	0	076	15.62
4202-168SR	1-1/4X1	15	0	076	33.57
4202-199SR	1-1/2X1-1/4X1/2	10	0	076	20.56
4202-209SR	1-1/2X1/2	25	0	076	20.56
4202-211SR	1-1/2X1-1/2X1	10	0	076	20.56
4202-237SR	2X1-1/2X1/2	10	0	076	29.01
4202-247SR	2X1/2	10	0	076	29.01
4202-287SR	2-1/2X1/2	10	0	076	39.76

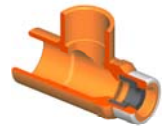
Part Number	Size	Std Pk	Mstr Ctn	Prod Code	MSRP
-------------	------	--------	----------	-----------	------

**SofTorque™ SR Sprinkler Head Tee - Gasket Sealed Special Reinforced Plastic Thread Style**

**Socket x SR Fipt x Socket - Stainless Steel Collar With Elastomer Seal - Use NO Thread Sealant**

NSF® Certified Lead Free

4203-122GSR	1X1/2X1	50	0	076	17.60
-------------	---------	----	---	-----	-------



**TorqueSafe™ Sprinkler Head Tee - Gasket Sealed Brass Thread Insert Style**

**Socket x Gasket Fipt x Socket With Elastomer Seal - Use NO Thread Sealant**

4203-122 G	1X1/2X1	50	0	076	28.91
------------	---------	----	---	-----	-------

FIPT With Elastomer Seal - Use NO Thread Sealant

**Not intended to convey or dispense water for human consumption through drinking or cooking**



**Sprinkler Head Tee - Brass Thread Insert Style**

**Socket x Fipt x Socket**

4203-122	1X1/2X1	50	0	076	28.91
----------	---------	----	---	-----	-------

**Not intended to convey or dispense water for human consumption through drinking or cooking**



**Sprinkler Head Tee - Special Reinforced Plastic Thread Style**

**Socket x SR Fipt x Socket - Stainless Steel Collar**

NSF® Certified Lead-Free

4203-122SR	1X1/2X1	50	0	076	10.07
------------	---------	----	---	-----	-------



**Street Tee**

**Spigot x Socket x Socket**

4244-007	3/4	15	105	070	7.83
4244-010	1	15	0	070	10.46
4244-012	1-1/4	10	0	070	19.00
4244-015	1-1/2	10	0	070	23.00
4244-020	2	10	0	070	33.99



**90° Ell**

**Socket x Socket**

4206-007	3/4	30	300	070	3.24
4206-010	1	20	200	070	7.20
4206-012	1-1/4	10	100	070	9.20
4206-015	1-1/2	10	0	070	12.84
4206-020	2	25	0	070	15.87
4206-025	2-1/2	5	0	070	30.65
4206-030	3	5	0	070	41.80





FlameGuard® CPVC Fire Sprinkler Piping Products

FlameGuard® CPVC Fire Sprinkler Piping Products

Part Number	Size	Std Pk	Mstr Ctn	Prod Code	MSRP
-------------	------	--------	----------	-----------	------

90° EII - Sweep

Socket x Socket



4206-010S	1	30	0	070	13.31
-----------	---	----	---	-----	-------

GripLoc™ 90° EII

**WARNING: DO NOT INSERT FINGERS  
EPDM Gasket**



Uses No Solvent Cement - NSF® Certified Lead Free  
175 psi (1.21 Mpa) @ 150° F (66°C)

GL4206-007	3/4	20	0	134	26.38
GL4206-010	1	1	20	134	30.14

90° Reducing EII

Socket x Socket

4206-131	1X3/4	20	240	070	6.38
4206-168	1-1/4X1	15	0	070	27.09

SofTorque™ SR 90° Sprinkler Head Elbow -  
Gasket Sealed Special Reinforced Plastic Thread  
Style

Socket x SR Fipt - Stainless Steel Collar With  
Elastomer Seal - Use NO Thread Sealant

NSF® Certified Lead-Free

4207-101GSR	3/4X1/2	20	140	076	5.72
4207-130GSR	1X1/2	20	80	076	8.06
4207-166GSR	1-1/4X1/2	15	60	076	10.24

TorqueSafe™ 90° Sprinkler Head Elbow - Gasket  
Sealed Brass Thread Insert Style

Socket x Gasket Fipt With Elastomer Seal - Use  
NO Thread Sealant



4207-101 G	3/4X1/2	20	120	076	10.77
4207-130 G	1X1/2	15	90	076	15.14
4207-166 G	1-1/4X1/2	10	60	076	21.07

FIPT With Elastomer Seal - Use NO Thread Sealant.

**Not intended to convey or dispense water for human consumption  
through drinking or cooking**

Sprinkler Head 90° EII - Brass Thread Insert Style

Socket x Fipt



4207-101	3/4X1/2	20	120	076	10.77
4207-130	1X1/2	15	90	076	15.14

Part Number	Size	Std Pk	Mstr Ctn	Prod Code	MSRP
-------------	------	--------	----------	-----------	------

Sprinkler Head 90° EII - Brass Thread Insert Style (continued)

Socket x Fipt

4207-131	1X3/4	25	0	076	18.32
4207-166	1-1/4X1/2	10	60	076	21.07

**Not intended to convey or dispense water for human consumption  
through drinking or cooking**

Sprinkler Head 90° EII - Special Reinforced Plastic  
Thread Style

Socket x SR Fipt - Stainless Steel Collar



NSF® Certified Lead-Free

4207-101SR	3/4X1/2	20	180	076	5.72
4207-130SR	1X1/2	10	150	076	8.06
4207-131SR	1X3/4	50	0	076	9.75
4207-166SR	1-1/4X1/2	25	0	076	10.24

90° Street EII

Spigot x Socket

4209-007	3/4	50	0	070	7.03
4209-010	1	50	0	070	10.39
4209-012	1-1/4	25	0	070	17.11
4209-015	1-1/2	10	0	070	20.83
4209-020	2	25	0	070	30.67

Side Outlet EII

Socket x Socket x Socket



4213-007	3/4	50	0	070	10.55
4213-010	1	25	0	070	14.38

22-1/2° EII

Socket x Socket



4216-007	3/4	20	360	070	5.25
4216-010	1	20	240	070	6.79
4216-012	1-1/4	20	0	070	9.19
4216-015	1-1/2	20	0	070	12.62
4216-020	2	20	0	070	15.62
4216-025	2-1/2	5	0	070	32.08
4216-030	3	5	0	070	40.67

22-1/2° Street EII

Spigot x Socket



4242-007	3/4	50	0	070	5.52
4242-010	1	50	0	070	7.11
4242-012	1-1/4	20	0	070	9.66
4242-015	1-1/2	25	0	070	13.26



**FlameGuard® Product**  
**FlameGuard® CPVC Fire Sprinkler Piping Products**



**FlameGuard® CPVC Fire Sprinkler Piping Products**

Part Number	Size	Std Pk	Mstr Ctn	Prod Code	MSRP
-------------	------	--------	----------	-----------	------

**22-1/2° Street Ell (continued)**

**Spigot x Socket**

4242-020	2	20	0	070	16.42
4242-025	2-1/2	5	0	070	23.02
4242-030	3	5	0	070	32.98

**45° Ell**

**Socket x Socket**

4217-007	3/4	20	360	070	4.40
4217-010	1	15	240	070	5.22
4217-012	1-1/4	10	120	070	7.64
4217-015	1-1/2	10	0	070	10.53
4217-020	2	10	0	070	13.24
4217-025	2-1/2	5	0	070	23.59
4217-030	3	5	0	070	34.12

**45° Street Ell**

**Spigot x Socket**

4227-010	1	50	0	070	5.22
4227-012	1-1/4	25	0	070	7.64
4227-015	1-1/2	25	0	070	9.46
4227-020	2	20	0	070	13.24

**Cross**

**Socket x Socket x Socket x Socket**

4220-007	3/4	20	0	070	6.94
4220-010	1	15	0	070	8.66
4220-012	1-1/4	10	0	070	12.06
4220-015	1-1/2	10	0	070	16.47
4220-020	2	8	0	070	26.83
4220-025	2-1/2	5	0	070	58.98
4220-030	3	5	0	070	86.51

**Reducing Cross**

**Socket x Socket x Socket x Socket**

4220-131	1X3/4	20	0	070	9.36
4220-167	1-1/4X3/4	25	0	070	14.45
4220-210	1-1/2X3/4	15	0	070	20.17
4220-248	2X3/4	10	0	070	26.46
4220-289	2-1/2X1	15	0	070	37.31

Part Number	Size	Std Pk	Mstr Ctn	Prod Code	MSRP
-------------	------	--------	----------	-----------	------

**Coupling**



**Socket x Socket**

4229-007	3/4	25	500	070	3.16
4229-010	1	25	250	070	4.04
4229-012	1-1/4	10	160	070	6.07
4229-015	1-1/2	10	100	070	8.66
4229-020	2	20	0	070	11.67
4229-025	2-1/2	10	0	070	17.78
4229-030	3	5	0	070	23.14

**Reducer Coupling**



**Socket x Socket**

4229-131	1X3/4	15	270	070	4.04
4229-167	1-1/4X3/4	25	0	070	6.28
4229-168	1-1/4X1	10	140	070	6.07
4229-210	1-1/2X3/4	25	0	070	9.36
4229-211	1-1/2X1	10	70	070	9.09
4229-212	1-1/2X1-1/4	10	120	070	8.66
4229-248	2X3/4	10	80	070	12.20
4229-249	2X1	25	0	070	12.20
4229-250	2X1-1/4	10	60	070	11.88
4229-251	2X1-1/2	10	100	070	11.67
4229-291	2-1/2X1-1/2	10	0	070	17.97
4229-292	2-1/2X2	10	0	070	18.43
4229-337	3X1-1/2	5	0	070	46.44
4229-339	3X2-1/2	10	0	070	54.72

**GripLoc™ Coupling**

**WARNING: DO NOT INSERT FINGERS  
EPDM Gasket**

Uses No Solvent Cement - NSF® Certified Lead Free  
175 psi (1.21 Mpa) @ 150° F (66°C)

GL4229-007	3/4	1	36	134	26.32
GL4229-010	1	1	20	134	28.25
GL4229-020	2	1	10	134	30.03

**Grooved Coupling Adapter**



**Groove x Socket**

4233-012	1-1/4	10	40	076	121.57
4233-015	1-1/2	10	40	076	128.85
4233-020	2	8	32	076	149.23
4233-025	2-1/2	5	0	076	191.42
4233-030	3	5	0	076	212.80

**Not intended to convey or dispense water for human consumption through drinking or cooking**



# FlameGuard® CPVC Fire Sprinkler Piping Products

## FlameGuard® CPVC Fire Sprinkler Piping Products

Part Number	Size	Std Pk	Mstr Ctn	Prod Code	MSRP
-------------	------	--------	----------	-----------	------

QuickTorque™ SR Female Sprinkler Head Adapter - Gasket Sealed Special Reinforced Metal Thread Style

**Socket x SR Fipt - Stainless Steel Collar With Elastomer Seal - Use NO Thread Sealant**

NSF® Certified Lead Free

4235-101GMR	<b>3/4X1/2</b>	50	0	076	11.46
4235-130GMR	<b>1X1/2</b>	50	0	076	12.75

SofTorque™ SR Female Sprinkler Head Adapter - Gasket Sealed Special Reinforced Plastic Thread Style

**Socket x SR Fipt - Stainless Steel Collar With Elastomer Seal - Use NO Thread Sealant**

NSF® Certified Lead-Free

4235-101GSR	<b>3/4X1/2</b>	50	0	076	11.46
4235-130GSR	<b>1X1/2</b>	50	0	076	12.21



TorqueSafe™ Female Sprinkler Head Adapter - Gasket Sealed Brass Thread Insert Style

**Socket x Gasket Fipt With Elastomer Seal - Use NO Thread Sealant**

4235-101 G	<b>3/4X1/2</b>	50	0	076	14.01
4235-130GS	<b>1X1/2</b>	50	0	076	14.86
4235-131 G	<b>1X3/4</b>	50	0	076	21.36

FIPT With Elastomer Seal - Use NO Thread Sealant.

**Not intended to convey or dispense water for human consumption through drinking or cooking**

GripLoc™ TorqueSafe™ Female Sprinkler Head Adapter - Gasket Sealed Brass Thread Insert Style

**WARNING: DO NOT INSERT FINGERS EPDM Gasket**

Uses No Solvent Cement or Thread Sealant

GL4235-101 G	<b>3/4X1/2</b>	25	0	134	23.58
GL4235-130 G	<b>1X1/2</b>	24	0	134	26.29

FIPT With Elastomer Seal - Use NO Thread Sealant

**Not intended to convey or dispense water for human consumption through drinking or cooking** Uses No Solvent Cement 175 psi (1.21 Mpa) @ 150° F (66°C)



Female Adapter - Brass Thread Insert Style

**Socket x Fipt**

4235-007	<b>3/4</b>	15	90	076	21.48
4235-010	<b>1</b>	15	90	076	37.71
4235-012	<b>1-1/4</b>	15	60	076	61.47

Part Number	Size	Std Pk	Mstr Ctn	Prod Code	MSRP
-------------	------	--------	----------	-----------	------

Female Adapter - Brass Thread Insert Style (continued)

**Socket x Fipt**

4235-015	<b>1-1/2</b>	10	40	076	82.01
4235-020	<b>2</b>	8	32	076	102.78

**Not intended to convey or dispense water for human consumption through drinking or cooking**

Female Sprinkler Head Adapter - Brass Thread Insert Style

**Socket x Fipt**

4235-101	<b>3/4X1/2</b>	50	0	076	13.00
4235-130	<b>1X1/2</b>	50	0	076	13.74
4235-131	<b>1X3/4</b>	50	0	076	19.80

**Not intended to convey or dispense water for human consumption through drinking or cooking**

Female Sprinkler Head Adapter - Special Reinforced Plastic Thread Style

**Socket x SR Fipt - Stainless Steel Collar**

NSF® Certified Lead-Free

4235-101SR	<b>3/4X1/2</b>	50	200	076	6.23
4235-130SR	<b>1X1/2</b>	50	0	076	6.66
4235-131SR	<b>1X3/4</b>	50	0	076	10.55

Female Sprinkler Head Adapter - Special Reinforced Plastic Thread Style with Socket Body Wrench Flats



**Socket x SR Fipt - Stainless Steel Collar**

NSF® Certified Lead-Free

W4235-101SR	<b>3/4X1/2</b>	50	0	076	7.11
W4235-130SR	<b>1X1/2</b>	50	0	076	7.60

Female Sprinkler Head Adapter - Brass Thread Insert Style with Long Body



**Socket x Fipt**

L4235-130	<b>1X1/2</b>	50	0	076	17.76
-----------	--------------	----	---	-----	-------

**Not intended to convey or dispense water for human consumption through drinking or cooking**

Female Sprinkler Head Adapter - Brass Thread Insert Style with Positioning Ring



**Socket x Fipt**

R4235-101	<b>3/4X1/2</b>	50	0	076	11.75
-----------	----------------	----	---	-----	-------

**Not intended to convey or dispense water for human consumption through drinking or cooking**

Female Sprinkler Head Adapter - Special Reinforced Plastic Thread Style with Positioning Ring



**Socket x SR Fipt - Stainless Steel Collar**

R4235-101SR	<b>3/4X1/2</b>	25	300	076	7.03
-------------	----------------	----	-----	-----	------

**FlameGuard® Product**  
**FlameGuard® CPVC Fire Sprinkler Piping Products**



**FlameGuard® CPVC Fire Sprinkler Piping Products**

Part Number	Size	Std Pk	Mstr Ctn	Prod Code	MSRP
-------------	------	--------	----------	-----------	------

Female Adapter - Special Reinforced Plastic Thread Style

**Socket x SR Fipt - Stainless Steel Collar**

NSF® Certified Lead-Free

4235-007SR	3/4	25	300	076	10.19
4235-010SR	1	25	200	076	17.93
4235-012SR	1-1/4	10	60	076	29.19

Transition Male Adapter with Brass Thread

**Mipt x Socket**

NSF® Certified Lead-Free

4236-007	3/4	40	160	076	48.36
4236-010	1	10	60	076	73.93
4236-012	1-1/4	10	40	076	88.41
4236-015	1-1/2	10	40	076	160.45
4236-020	2	8	32	076	213.52

TorqueSafe™ Female Spigot Sprinkler Head Adapters - Gasket Sealed Brass Thread Insert Style

**Spigot x Gasket Fipt With Elastomer Seal - Use NO Thread Sealant**

4238-101 G	3/4X1/2	50	200	076	11.75
4238-130 G	1X1/2	50	0	076	12.54

FIPT With Elastomer Seal - Use NO Thread Sealant.

**Not intended to convey or dispense water for human consumption through drinking or cooking**

SofTorque™ Reducer Bushing - Gasket Sealed Plastic Thread Style

**Spigot x Fipt - With Elastomer Seal - Use NO Thread Sealant**

4238-130GSR	1X1/2	50	300	076	14.16
-------------	-------	----	-----	-----	-------

TorqueSafe™ Bushing - Gasket Sealed Brass Thread Insert Style

**Spigot x Gasket Fipt With Elastomer Seal - Use NO Thread Sealant**

4238-130BR G	1X1/2	50	200	076	16.22
--------------	-------	----	-----	-----	-------

FIPT With Elastomer Seal - Use NO Thread Sealant.

**Not intended to convey or dispense water for human consumption through drinking or cooking**

Bushing - with Brass Thread Insert

**Spigot x Fipt**

4238-130BR	1X1/2	50	200	076	16.22
------------	-------	----	-----	-----	-------

Part Number	Size	Std Pk	Mstr Ctn	Prod Code	MSRP
-------------	------	--------	----------	-----------	------

Bushing - with Brass Thread Insert (continued)

**Spigot x Fipt**

**Not intended to convey or dispense water for human consumption through drinking or cooking**

Spigot Female Sprinkler Head Adapters - Brass Thread Insert Style



**Spigot x Fipt**

4238-101	3/4X1/2	50	200	076	11.75
4238-130	1X1/2	50	0	076	12.54

**Not intended to convey or dispense water for human consumption through drinking or cooking**

SofTorque™ Spigot Female Adapter - Gasket Sealed Special Reinforced Plastic Thread Style

**Spigot x SR Fipt - Stainless Steel Collar With Elastomer Seal - Use NO Thread Sealant**

NSF® Certified Lead Free

4278-101GSR	3/4X1/2	50	0	076	10.71
4278-130GSR	1X1/2	50	0	076	19.06

Spigot Female Adapter - Brass Thread Insert Style

**Spigot x Fipt**

4278-007	3/4	25	150	076	20.09
4278-010	1	15	90	076	35.80

**Not intended to convey or dispense water for human consumption through drinking or cooking**

Spigot Female Adapter - Special Reinforced Plastic Thread Style

**Spigot x SR Fipt - Stainless Steel Collar**

NSF® Certified Lead-Free

4278-007SR	3/4	25	300	076	10.71
4278-010SR	1	50	0	076	19.06

Replacement Gaskets for all TorqueSafe™ Gasket Sealed Head Adapters

**Pack of 25 EPDM Gaskets**

For Use in 1/2" or 3/4" Gasket Sealed Threads

RGSK-005	1/2	1	100	299	13.04
RGSK-007	3/4	1	100	299	18.22

Spigot Female Sprinkler Head Adapters - Special Reinforced Plastic Thread Style

**Spigot x SR Fipt - Stainless Steel Collar**

NSF® Certified Lead-Free

4238-101SR	3/4X1/2	50	400	076	6.23
4238-130SR	1X1/2	50	0	076	6.75





FlameGuard® Product  
**FlameGuard® CPVC Fire Sprinkler Piping Products**

**FlameGuard® CPVC Fire Sprinkler Piping Products**

Part Number	Size	L - Max	Std Pk	Mstr Ctn	Prod Code	MSRP
-------------	------	---------	--------	----------	-----------	------

Adjustable Sprinkler Head Adapters -  
 Special Reinforced Plastic Thread Style

**Socket x SR Fipt - Stainless Steel Collar**  
**TRAVEL = 1-9/16"**

NSF® Certified Lead-Free

42001SR	<b>3/4X1/2</b>	8-1/4	12	0	076	15.91
42011SR	<b>1X1/2</b>	8-3/8	12	0	076	15.91

**L-Max = Maximum Adjustable Length**

Adjustable Sprinkler Head Adapters -  
 Special Reinforced Plastic Thread Style

**Spigot x SR Fipt - Stainless Steel Collar**  
**TRAVEL = 1-5/8"**

NSF® Certified Lead-Free

42004SR	<b>3/4X1/2</b>	8-1/4	12	0	076	15.91
42014SR	<b>1X1/2</b>	8-1/4	12	0	076	15.91

**L-Max = Maximum Adjustable Length**

Part Number	Size	Std Pk	Mstr Ctn	Prod Code	MSRP
-------------	------	--------	----------	-----------	------

Reducer Bushing - Flush Style

**Spigot x Socket**

4237-131	<b>1X3/4</b>	50	700	070	2.45
4237-167	<b>1-1/4X3/4</b>	25	200	070	3.85
4237-168	<b>1-1/4X1</b>	25	350	070	3.85
4237-210	<b>1-1/2X3/4</b>	25	125	070	4.34
4237-211	<b>1-1/2X1</b>	25	150	070	4.34
4237-212	<b>1-1/2X1-1/4</b>	25	300	070	4.34
4237-248	<b>2X3/4</b>	10	150	070	6.36
4237-249	<b>2X1</b>	10	160	070	6.36
4237-250	<b>2X1-1/4</b>	10	160	070	6.36
4237-251	<b>2X1-1/2</b>	10	160	070	6.36
4237-290	<b>2-1/2X1-1/4</b>	10	40	070	11.01
4237-291	<b>2-1/2X1-1/2</b>	10	40	070	11.01
4237-292	<b>2-1/2X2</b>	15	0	070	11.01
4237-338	<b>3X2</b>	10	0	070	16.47
4237-339	<b>3X2-1/2</b>	10	0	070	16.47

Part Number	Size	Std Pk	Mstr Ctn	Prod Code	MSRP
-------------	------	--------	----------	-----------	------

Transition Bushing

**IPS Spigot x CTS Socket**

4240-101	<b>3/4X1/2</b>	50	300	070	11.09
4240-130	<b>1X1/2</b>	50	300	070	8.73

Cap

**Socket**

4247-007	<b>3/4</b>	25	400	070	1.91
4247-010	<b>1</b>	25	450	070	2.76
4247-012	<b>1-1/4</b>	10	60	070	4.34
4247-015	<b>1-1/2</b>	10	160	070	6.03
4247-020	<b>2</b>	10	60	070	9.18
4247-025	<b>2-1/2</b>	5	40	070	13.01
4247-030	<b>3</b>	5	0	070	21.28

GripLoc™ Cap

**WARNING: DO NOT INSERT FINGERS**  
**EPDM Gasket**

Uses No Solvent Cement - NSF® Certified Lead Free  
 175 psi (1.21 Mpa) @ 150° F (66°C)

GL4247-007	<b>3/4</b>	1	25	134	23.44
GL4247-010	<b>1</b>	1	50	134	25.17

Test Plug - O-ring Sealed

**Mipt - For Pressure Testing Only. NOT for use**  
**with TorqueSafe™ or Z4235 Series Adapters**

FTP-005	<b>1/2</b>	50	400	079	1.97
---------	------------	----	-----	-----	------

DO NOT use with Tape or Paste thread sealants

Test Plug Replacement O-ring

**Buna-N, For O-ring Sealed Test Plug Only**

Pack of 100

BPB-116	<b>116</b>	1	10	891	4.37
---------	------------	---	----	-----	------

For Use With FTP-005 Test Plug

Test Plug for TorqueSafe™ & SofTorque™ Gasket  
 Sealed Head Adapters

**Mipt - For Pressure Testing Only. Use ONLY with**  
**Gasket Sealed Adapters**

FTP-005GS	<b>1/2</b>	50	400	004	1.97
-----------	------------	----	-----	-----	------

FlameGuard® Product  
**FlameGuard® CPVC Fire Sprinkler Piping Products**



**FlameGuard® CPVC Fire Sprinkler Piping Products**

Part Number	Size	Std Pk	Mstr Ctn	Prod Code	MSRP
-------------	------	--------	----------	-----------	------

**Test Plug - White PVC**

**Mipt - For Pressure Testing Only**

Part Number	Size	Std Pk	Mstr Ctn	Prod Code	MSRP
4250-005	1/2	50	400	070	2.07
Requires use of a thread sealant					

**Flange - One Piece**

**Socket - 4 Bolt Holes - 175 psi (1.21 Mpa) @ 150° F (66°C)**

Part Number	Size	Std Pk	Mstr Ctn	Prod Code	MSRP
4251-007	3/4	25	0	070	6.82
4251-010	1	15	0	070	9.06
4251-012	1-1/4	15	0	070	11.67
4251-015	1-1/2	15	0	070	13.53
4251-020	2	10	0	070	20.68
4251-025	2-1/2	10	0	070	35.00

**Blind Flange**

**4 Bolt Holes - 175 psi (1.21 Mpa) @ 150° F (66°C)**

Part Number	Size	Std Pk	Mstr Ctn	Prod Code	MSRP
4253-007	3/4	25	0	070	6.82
4253-010	1	15	0	070	9.71
4253-012	1-1/4	15	0	070	12.40
4253-015	1-1/2	15	0	070	13.93
4253-020	2	10	0	070	22.81
4253-025	2-1/2	10	0	070	36.67
4253-030	3	10	0	070	40.27

**Flange - Van Stone Style**

**Socket - 4 Bolt Holes - 175 psi (1.21 Mpa) @ 150° F (66°C)**

Part Number	Size	Std Pk	Mstr Ctn	Prod Code	MSRP
4254-030	3	10	0	070	43.01

**Flange - Van Stone Style**

**Spigot - 4 Bolt Holes - 175 psi (1.21 Mpa) @ 150° F (66°C)**

Part Number	Size	Std Pk	Mstr Ctn	Prod Code	MSRP
4256-007	3/4	25	0	070	7.03
4256-010	1	15	0	070	9.93
4256-012	1-1/4	15	0	070	12.69
4256-015	1-1/2	15	0	070	14.25
4256-020	2	10	0	070	23.24
4256-025	2-1/2	10	0	070	37.18
4256-030	3	10	0	070	43.38

Part Number	Size	Std Pk	Mstr Ctn	Prod Code	MSRP
-------------	------	--------	----------	-----------	------

**Union**

**Socket x Socket**

175 psi (1.21 Mpa) @ 150° F (66°C)

Part Number	Size	Std Pk	Mstr Ctn	Prod Code	MSRP
4257-007	3/4	10	80	070	8.80
4257-010	1	10	40	070	15.95
4257-012	1-1/4	5	20	070	20.87
4257-015	1-1/2	5	0	070	24.75
4257-020	2	5	0	070	40.65

**Transition Union - Metal Thread Insert Style**

**Socket x Fipt**

175 psi (1.21 Mpa) @ 150° F (66°C)

Part Number	Size	Std Pk	Mstr Ctn	Prod Code	MSRP
4259-010BR	1	10	0	076	55.41
4259-012BR	1-1/4	5	20	076	81.25
4259-015BR	1-1/2	5	0	076	115.45
4259-020BR	2	5	0	076	170.26

**Not intended to convey or dispense water for human consumption through drinking or cooking**

Part Number	Size	Travel - T	Std Pk	Mstr Ctn	Prod Code	MSRP
-------------	------	------------	--------	----------	-----------	------

**Short Repair Couplings**

**Spigot x Socket**

175 psi (1.21 Mpa) @ 150° F (66°C)

Part Number	Size	Travel - T	Std Pk	Mstr Ctn	Prod Code	MSRP
SH118-07CO	3/4	2	30	0	078	15.81
SH118-10CO	1	2-1/8	35	0	078	25.64

**Unit Must Be Thrust Blocked  
T = Repair Coupling Travel**

**GripLoc™ Repair Coupling**

**WARNING: DO NOT INSERT FINGERS  
EPDM Gasket**

Uses No Solvent Cement - NSF® Certified Lead Free

175 psi (1.21 Mpa) @ 150° F (66°C)

Part Number	Size	Travel - T	Std Pk	Mstr Ctn	Prod Code	MSRP
SG118-07CO	3/4	2-15/16	1	25	134	44.04
SG118-10CO	1	2-7/8	1	25	134	49.86



**FlameGuard® Product**  
**FlameGuard® CPVC Fire Sprinkler Piping Products**

**FlameGuard® CPVC Fire Sprinkler Piping Products**

Part Number	Size	Travel - T	Std Pk	Mstr Ctn	Prod Code	MSRP
-------------	------	------------	--------	----------	-----------	------

GripLoc™ Repair Coupling (continued)

**WARNING: DO NOT INSERT FINGERS**

**EPDM Gasket**

Unit Must Be Thrust Blocked  
**T = Repair Coupling Travel**

Part Number	Size	Std Pk	Mstr Ctn	Prod Code	MSRP
-------------	------	--------	----------	-----------	------

**Blue 75™ Thread Sealant**

SB75-005	<b>1/4 Pint</b>	24	0	895	12.20
SB75-010	<b>1/2 Pint</b>	24	0	895	19.43
SB75-020	<b>Pint</b>	12	0	895	31.42
SB75-030	<b>Quart</b>	12	0	895	56.46

**FS-5 One-Step Cement**

FS5-020	<b>Pint</b>	12	0	703	31.31
FS5-030	<b>Quart</b>	12	0	703	57.43

**Empty Cans**

**With Cap/Lid - order Daubers separately**

MT-654	<b>Pint</b>	12	0	710	6.09
MT-651	<b>Quart</b>	12	0	710	7.92
MT-653	<b>Quart</b>	12	0	710	9.26

<sup>1</sup> 1-3/4 Screw Neck

<sup>2</sup> TT Paint Type

**Brush**

**For Pint and Quart Cans**

KD-110	<b>4-1/2" Length</b>	25	0	710	10.62
KD-112	<b>5-1/2" length</b>	25	0	710	10.62

1" Brush w/1-3/4" Screw Cap, for pipe size 3/4" - 2"

Part Number	Size	Std Pk	Mstr Ctn	Prod Code	MSRP
-------------	------	--------	----------	-----------	------

**Roller - Small Cap**

**Fits 1-3/4" Neck Quart Cans (MT-651).  
 Replaceable cover. For pipe size 3" to 6".**

6020	<b>4" length</b>	24	0	710	16.55
------	------------------	----	---	-----	-------

**Roller Replacement Covers**

**Fits Rollers with Heavy Handles #5520,  
 #6020 & #6520. Sold as Pack of 2, full pack  
 only.**

5520-1	Fits 5520 & 6020 Roller	1	75	710	14.99
--------	-------------------------	---	----	-----	-------

**Cap Dauber**

DP-75	<b>3/4" for Pint</b>	50	0	710	1.45
DP-125	<b>1-1/4" for Pint</b>	50	0	710	1.75
DQ-125	<b>1-1/4" for Quart</b>	50	0	710	1.75

\* 3/4" Diameter fits Pint Cans, for pipe size 3/4"

\*\* 1-1/2" Diameter fits Pint Cans, for pipe size 1-1/2"

\*\*\*1-1/2" Diameter fits Quart Cans, for pipe size 1-1/2"

**Can-Mate Dauber**

**Adjustable Plastic Applicator with  
 Telescoping Stem for use with Standard  
 Pint and Quart Cans.**

CM-75	<b>3/4"</b>	50	0	710	5.83
CM-150	<b>1-1/4"</b>	50	0	710	5.83

3/4" Diameter fits Pint or Quart Cans, for pipe sizes 3/4" - 1-1/4"

1-1/4" Diameter fits Pint or Quart Cans, for pipe sizes 1-1/2" - 3"

**Deburring Tool**

**Cone Type for pipe 1/2" - 2"**

DEB-2	<b>1/2" to 2" Pipe</b>	1	6	710	108.26
-------	------------------------	---	---	-----	--------

**Spears® Sprinkler Head Adapter Removal Kit & CPVC Riser Drain Valves For NFPA 13D Installations Only**



**Spears® Sprinkler Head Adapter Removal Kit**

Occasionally a Sprinkler Head Adapter may need to be removed for relocation, extension or repair. Kit includes Cutter, Deburring Tool and Wrench. Cutter provides easy cutting of pipe from the inside (using a power drill) to remove adapters without disturbing ceiling or side wall. Deburring Tool allows removal of burrs in cut pipe. Wrench is designed to hold Spears® TorqueSafe™ Head Adapter brass insert from rotating to aid in sprinkler head removal from adapter, if required.

Part Number	Size	Std Pk	Mstr Ctn	Prod Code	MSRP
-------------	------	--------	----------	-----------	------

**Complete Kit**

**Inside Pipe Cutter, Deburring Tool and Wrench**

SHRK-005	3/4" & 1" Pipe	1	15	299	660.31
----------	----------------	---	----	-----	--------

**Inside Pipe Cutter Only**

GSC-005	3/4" & 1" Pipe	25	0	299	388.02
---------	----------------	----	---	-----	--------

**Deburring Tool Only**

GSB-005	3/4" & 1" Pipe	25	0	299	447.66
---------	----------------	----	---	-----	--------

**Wrench Only**

GSW-005	For 1/2	1	50	299	161.03
---------	---------	---	----	-----	--------

**CPVC Riser Drain Valves For NFPA 13D Installations Only**

**FlameGuard® CPVC Drain & Check Valves For NFPA 13D Applications Only**

Application: FlameGuard® CPVC Orange Check Valves and PVC/CPVC True Union Drain Valves are for use in configuring CPVC Fire Sprinkler System connection to water supply (riser/drain assembly) in NFPA 13D installations only. These valves are not UL Listed and NOT for use in any other locations within the fire sprinkler system.

Part Number	Size	Std Pk	Mstr Ctn	Prod Code	MSRP
-------------	------	--------	----------	-----------	------

**True Union Industrial Drain Valve With Locking Handle**

**Socket x Socket**

**CPVC Gray Valve with CPVC Orange End Connector**

1822-007CFG	3/4	1	18	077	96.40
1822-010CFG	1	1	12	077	114.77
1822-012CFG	1-1/4	1	8	077	182.45
1822-015CFG	1-1/2	1	8	077	192.69
1822-020CFG	2	1	4	077	257.71
Not UL Listed					

**True Union Standard Drain Valves**

**Socket x Socket**

**PVC Gray Valve with CPVC Orange End Connector**

3622-007FG	3/4	1	18	077	54.86
3622-010FG	1	1	12	077	65.34
Not UL Listed					

**Compact 2000 Drain Valve**

**Socket x Socket**

6622-007CO	3/4	10	80	077	37.65
6622-010CO	1	10	0	077	47.07
Not UL Listed					

**CPVC Swing Check Valves**

**Socket x Socket**

S1520-10CO	1	20	0	077	37.46
S1520-12CO	1-1/4	12	0	077	41.86
S1520-15CO	1-1/2	12	0	077	47.07





CPVC Riser Drain Valves For NFPA 13D Installations Only

Part Number	Size	Std Pk	Mstr Ctn	Prod Code	MSRP
-------------	------	--------	----------	-----------	------

CPVC Swing Check Valves (continued)

Socket x Socket

Not UL Listed
---------------

CPVC Special Reinforced Thread Inlet Swing Check Valves

SR Fipt x Socket

S1520-10FSRSCO	1	20	0	077	40.57
S1520-12FSRSCO	1-1/4	12	0	077	46.83
S1520-15FSRSCO	1-1/2	12	0	077	55.57

Not UL Listed
---------------

**General Installation Information:** Socket end connections should be installed using Spears® FS-5 One-Step Cement for use with Spears® CPVC Fire Sprinkler Products. Threaded connections should be made using Spears® BLUE 75™ Thread Sealant tested for compatibility with CPVC materials. PVC True Union Drain Valves are to be installed with system connection to Valve CPVC End Connector. Swing check valves are designed for horizontal installations, but may be installed in up-flow only vertical position. Check valves MUST be installed with the valve's FLOW arrow pointing in the direction of the flow. Do not install valve upside down.