

Irrigation & Turf Product Dri-Splice Wire Connectors



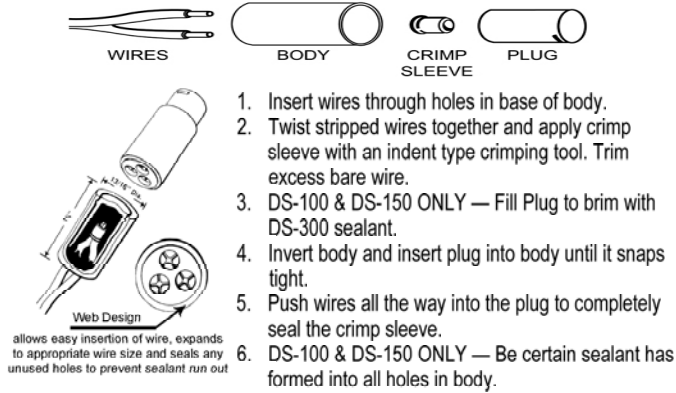
Dri-Splice Wire Connectors

For use in electrical systems with 30v or less.

The Spears® Dri-Splice Seal designed into each wire hole enables you to stock one connector for all applications. The Dri-Splice Seal features an interference webbing which expands to accommodate #18 through #6 gauge wire sizes. In the event only two holes are used, the Dri-Splice Seal prevents sealant from leaking out through the third hole.

SOLD IN STANDARD PACK QUANTITIES ONLY

DS-100/DS-150 & DS-400/DS-450 Dri-Splice Wire Connector Installation Information



DS-100 & DS-150 Dri-Splice

- DS-100 fits AWG #18, #14, #12, or #10
- DS-150 fits AWG #14, #12, #10, #8, or #6
- Designed to insure waterproof connections
- Easily installed in the field without special tools
- Permanent protection for underground wire splices
- Requires the use of DS-300 Sealant

DS-400 & DS-450 Pre-Filled Dri-Splice

- All the features of the DS-100 or DS-150, plus the added benefit of being pre-filled with Dielectric Silicone Sealant
- Reduced inventory requirements
- Insures proper amount and type of Sealant every time
- Eliminates costly waste and clean-up
- Makes installations quick, clean and efficient

Dri-Splice Wire Connectors

Part Number	Size	Std Pk	Mstr Ctn	Prod Code
-------------	------	--------	----------	-----------

Dri-Splice Wire Connector with Crimp Sleeve (Sealant sold separately)

DS-100	AWG #18, #14, #12, #10	25	400	020
DS-150	AWG #14, #12, #10, #8, #6	25	400	020

Pre-Filled Dri-Splice Wire Connector with Crimp Sleeve

DS-400	AWG #18, #14, #12, #10	25	400	020
DS-450	AWG #14, #12, #10, #8, #6	25	400	020

Crimp Sleeves

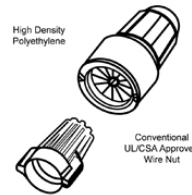
DS-200	AWG #18, #14, #12, #10	25	15000	022
DS-250	AWG #14, #12, #10, #8, #6	25	12500	001

Dri-Splice Wire Connectors

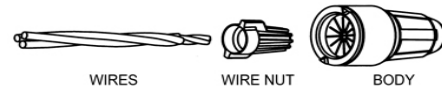
Part Number	Size	Std Pk	Mstr Ctn	Prod Code
-------------	------	--------	----------	-----------

Dri-Splice Sealant For DS-100 and DS-150 (Approx. 30 connections per 5 oz. tube)

DS-300	AWG #18, #14, #12, #10	24	0	022
--------	------------------------	----	---	-----



DS-500 Dri-Splice Wire Connector Installation Information



1. Strip wires and install wire nut.
2. Align wire nut wings with arrows and insert fully into body.

Dri-Splice Wire Connector General Information

DS-300 Sealant* (for DS-100 & DS-150) - *MSDS available upon request.*

DS-400 & DS-450 Dielectric Silicone Sealant* - *defined as an Article, per OSHA 29 CFR 1910, 1200, which does not require an MSDS.*

DS-500 Dielectric Silicone Sealant* - *defined as an Article, per OSHA 29 CFR 1910, 1200, which does not require an MSDS.*

Sealant:

Shelf Life:

DS-300 (unopened tube)— One Year*
DS-400 & DS-450 — Indefinite at 73°F (23°C)*
DS-500— Indefinite at 73°F (23°C)*

Electrical Systems: For use in electrical systems with 30v or less. UL Listing NOT required in most areas.

DS-100/DS-150 & Plug— PVC

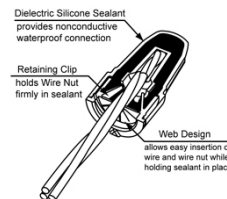
DS-400/DS-450 Body— PVC

Components: Crimp Sleeve— UL and CSA Listed for 18 - 10 awg solid or stranded copper conductors.

DS-500 Body— Polyethylene

Components: Wire Nut— Twist-On Spring Type - UL/CSA Listed for 22 - 10 awg solid or stranded copper wire.

* Information developed and furnished by the Sealant Manufacturers.



DS-500 Dri-Splice Wire Connector For use in electrical systems with 30v or less.

Spears® NEW DS-500 Dri Splice Wire Connector is the fast, reliable and clean way of making positive, waterproof connections you can depend on. Simply twist Wire Nut on and insert into Dielectric Silicone Sealant Cartridge. The DS-500 is specially designed for irrigation systems and low voltage lighting, marine and security systems and suitable for direct burial.

- Allows full assembly and check of connection prior to sealing
- Accepts wire combinations from 3 #22 to 3 #10 AWG solid or stranded copper wire
- Special "No-Mess" cartridge design fully encloses sealant
- Internal interlock prevents disengagement of wire nut from sealant cartridge

Pre-Filled Dri-Splice Wire Connector with Wire Nut

DS-500	3 AWG #22-#10	25	500	020
--------	---------------	----	-----	-----