

Pipe Supports

B3092 - Adjustable Pipe Saddle Support with Yoke

Size Range: 3/4" (20mm) thru 36" (900mm) pipe

Material: Steel with cast iron reducer

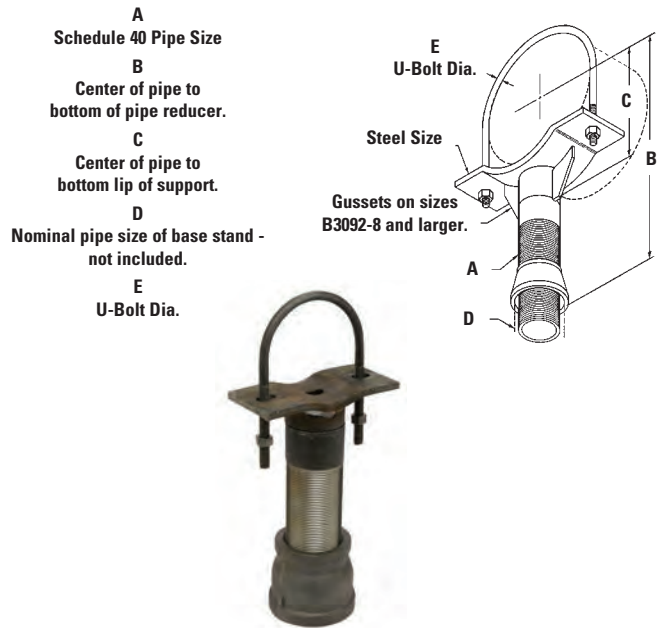
Function: Designed to support horizontal pipe from floor stanchion where vertical adjustment is required. U-bolt and hex nuts are provided to hold pipe securely to saddle. To complete floor stanchion, use with B3088T (page 42) threaded pipe stand.

Approvals: Conforms to Federal Specification WW-H-171E & A-A-1192A and Manufacturers Standardization Society ANSI/MSS SP-69 & SP-58, Type 37.

Finish: Plain. Contact customer service for alternative finishes and materials.

Order By: Figure number and finish

Notes: Order with B3088T for complete stanchion support. 4" (100mm) thru 12" (300mm) fits both steel and ductile iron pipe. For other ductile iron pipe sizes specify B3092D1 - size. 3" (80mm) Ductile Iron uses B3092-3 1/2



Part No.	Pipe Size		Maximum O.D. of Pipe		A		Minimum		B	Maximum	
	in.	(mm)	in.	(mm)	in.	(mm)	in.	(mm)		in.	(mm)
B3092-3/4	3/4"	(19)	1 3/8"	(34.9)	3/4"	(19)	5 3/4"	(146.0)	10 1/4"	(260.3)	
B3092-1	1"	(25)	1 3/8"	(34.9)	3/4"	(19)	5 29/32"	(150.0)	10 13/32"	(264.3)	
B3092-1 1/4	1 1/4"	(32)	1 11/16"	(42.9)	3/4"	(19)	6 5/64"	(154.4)	10 37/64"	(268.7)	
B3092-1 1/2	1 1/2"	(38)	2"	(50.8)	3/4"	(19)	6 1/4"	(158.7)	10 3/4"	(273.0)	
B3092-2	2"	(50)	2 7/16"	(61.9)	3/4"	(19)	6 7/16"	(163.5)	10 15/16"	(277.8)	
B3092-2 1/2	2 1/2"	(65)	2 7/8"	(73.0)	1 1/2"	(40)	6 7/8"	(174.6)	11 3/8"	(288.9)	
B3092-3	3"	(80)	3 1/2"	(88.9)	1 1/2"	(40)	7 3/16"	(182.6)	11 11/16"	(296.9)	
B3092-3 1/2	3 1/2"	(90)	4"	(101.6)	1 1/2"	(40)	7 7/16"	(188.9)	11 15/16"	(303.2)	
B3092-4	4"	(100)	4 7/8"	(123.8)	2 1/2"	(65)	7 13/16"	(198.4)	12 5/16"	(312.7)	
B3092-5	5"	(125)	5 5/8"	(142.9)	2 1/2"	(65)	8 9/32"	(210.3)	12 25/32"	(324.6)	
B3092-6	6"	(150)	6 29/32"	(175.4)	2 1/2"	(65)	9 1/16"	(230.2)	13 9/16"	(344.5)	
B3092-8	8"	(200)	9 1/8"	(231.8)	2 1/2"	(65)	10 1/2"	(266.7)	15"	(381.0)	

Part No.	C		D (Not Supplied)		E		Saddle Steel Size		Approx. Wt./100	
	in.	(mm)	in.	(mm)	in.	(mm)	in.	(mm)	Lbs.	(kg)
B3092-3/4	2"	(50.8)	1 1/2"	(38)	1/4"	(6.4)	1/4" x 1 1/2"	(6.3 x 38.1)	247	(112.0)
B3092-1	2 5/32"	(54.8)	1 1/2"	(38)	1/4"	(6.4)	1/4" x 1 1/2"	(6.3 x 38.1)	257	(116.6)
B3092-1 1/4	2 21/64"	(59.1)	1 1/2"	(38)	3/8"	(9.5)	1/4" x 2"	(6.3 x 50.8)	289	(131.1)
B3092-1 1/2	2 1/2"	(63.5)	1 1/2"	(38)	3/8"	(9.5)	1/4" x 2"	(6.3 x 50.8)	306	(138.8)
B3092-2	2 11/16"	(68.3)	1 1/2"	(38)	3/8"	(9.5)	1/4" x 2"	(6.3 x 50.8)	326	(147.9)
B3092-2 1/2	3 1/8"	(79.4)	2 1/2"	(65)	1/2"	(12.7)	1/4" x 3"	(6.3 x 76.2)	651	(295.3)
B3092-3	3 7/16"	(87.3)	2 1/2"	(65)	1/2"	(12.7)	1/4" x 3"	(6.3 x 76.2)	716	(324.8)
B3092-3 1/2	3 11/16"	(93.7)	2 1/2"	(65)	1/2"	(12.7)	1/4" x 3"	(6.3 x 76.2)	717	(325.2)
B3092-4	4 1/4"	(107.9)	3"	(80)	1/2"	(12.7)	3/8" x 3 1/2"	(9.5 x 88.9)	1286	(583.3)
B3092-5	4 9/16"	(115.9)	3"	(80)	1/2"	(12.7)	3/8" x 3 1/2"	(9.5 x 88.9)	1321	(599.2)
B3092-6	5 1/2"	(139.7)	3"	(80)	5/8"	(15.9)	1/2" x 3 1/2"	(12.7 x 88.9)	1595	(723.5)
B3092-8	7"	(177.8)	3"	(80)	5/8"	(15.9)	1/2" x 3 1/2"	(12.7 x 88.9)	1815	(823.3)

All dimensions in charts and on drawings are in inches. Dimensions shown in parentheses are in millimeters unless otherwise specified.