



# PVC Low Head PIP Fabricated Fittings, Risers & Accessories



## PRODUCT

Contact Spears® for any Information not found.

**Irrigation & Turf Product**  
**PVC Low Head PIP Fabricated Fittings, Risers & Accessories**



**Couplings**

Part Number	Size	Std Pk	Mstr Ctn	Prod Code	MSRP
-------------	------	--------	----------	-----------	------

Coupling

**Socket x Socket**



15° Elbow

**Socket x Socket**



22-1/2° Elbow

**Socket x Socket**

280-100001	4 IPS	1	10	300	18.54
280-100002	6	1	5	300	22.87
280-100003	8	1	6	300	25.74
280-100004	10	1	4	300	35.78
280-100005	12	1	4	300	48.67
280-100006	15	1	0	300	85.85
280-100007	18	1	0	300	153.07
280-100008	20	1	0	300	188.86

280-100234	6	1	10	300	27.20
280-100235	8	1	4	300	38.66
280-100236	10	1	2	300	55.78
280-100237	12	1	2	300	77.26
280-100238	15	1	0	300	133.06
280-100239	18	1	0	300	233.23
280-100240	20	1	0	300	301.89

**90° Ells**

90° Elbow

**Socket x Socket**



30° Elbow

**Socket x Socket**

280-100812	6	1	4	300	85.85
280-100813	8	1	2	300	105.85
280-100814	10	1	0	300	168.87
280-100815	12	1	0	300	221.78
280-100816	15	1	0	300	362.02
280-100817	18	1	0	300	626.75
280-100818	20	1	0	300	844.36

280-100354	6	1	4	300	27.20
280-100355	8	1	3	300	38.66
280-100356	10	1	2	300	55.78
280-100357	12	1	2	300	77.26
280-100358	15	1	0	300	133.06
280-100359	18	1	0	300	233.23
280-100360	20	1	0	300	301.89

**Non 90° Ells**

11-1/4° Elbow

**Socket x Socket**



280-100474	6	1	8	300	45.75
280-100475	8	1	4	300	67.19
280-100476	10	1	2	300	82.98
280-100477	12	1	2	300	135.99
280-100478	15	1	0	300	218.95
280-100479	18	1	0	300	387.76
280-100480	20	1	0	300	430.73

280-100114	6	1	10	300	27.20
280-100115	8	1	8	300	38.66
280-100116	10	1	2	300	55.78
280-100117	12	1	2	300	77.26
280-100118	15	1	0	300	133.06
280-100119	18	1	0	300	228.98
280-100120	20	1	0	300	290.48



**Irrigation & Turf Product**  
**PVC Low Head PIP Fabricated Fittings, Risers & Accessories**

**Non 90° Ells**

Part Number	Size	Std Pk	Mstr Ctn	Prod Code	MSRP
-------------	------	--------	----------	-----------	------

45° Elbow

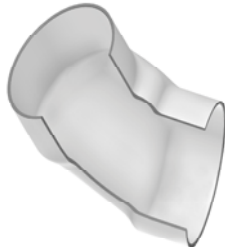
Socket x Socket



<a href="#">280-100592</a>	<b>6</b>	1	4	300	45.75
<a href="#">280-100593</a>	<b>8</b>	1	4	300	67.19
<a href="#">280-100594</a>	<b>10</b>	1	2	300	82.98
<a href="#">280-100595</a>	<b>12</b>	1	2	300	135.99
<a href="#">280-100596</a>	<b>15</b>	1	0	300	218.95
<a href="#">280-100597</a>	<b>18</b>	1	0	300	387.76
<a href="#">280-100598</a>	<b>20</b>	1	0	300	430.73

60° Elbow

Socket x Socket



<a href="#">280-100702</a>	<b>6</b>	1	4	300	85.85
<a href="#">280-100703</a>	<b>8</b>	1	2	300	105.85
<a href="#">280-100704</a>	<b>10</b>	1	0	300	168.87
<a href="#">280-100705</a>	<b>12</b>	1	0	300	221.78
<a href="#">280-100706</a>	<b>15</b>	1	0	300	362.02
<a href="#">280-100707</a>	<b>18</b>	1	0	300	626.75
<a href="#">280-100708</a>	<b>20</b>	1	0	300	844.36

**Reducer Coupling**

Coupling - Reducer

Socket x Socket



<a href="#">280-100928</a>	<b>8X6</b>	1	2	300	40.06
<a href="#">2829-626</a>	<b>10X6</b>	1	8	300	161.40
<a href="#">280-100931</a>	<b>10X8</b>	1	4	300	61.54
<a href="#">280-100933</a>	<b>12X6</b>	1	6	300	230.15
<a href="#">280-100934</a>	<b>12X8</b>	1	4	300	178.87
<a href="#">280-100935</a>	<b>12X10</b>	1	4	300	88.75
<a href="#">2829-726</a>	<b>15X6</b>	1	0	300	399.39
<a href="#">2829-728</a>	<b>15X8</b>	1	0	309	286.86
<a href="#">280-100939</a>	<b>15X10</b>	1	0	300	203.96
<a href="#">280-100940</a>	<b>15X12</b>	1	0	300	134.46
<a href="#">2829-786</a>	<b>18X6</b>	1	0	300	599.77

Part Number	Size	Std Pk	Mstr Ctn	Prod Code	MSRP
-------------	------	--------	----------	-----------	------

Coupling - Reducer (continued)

Socket x Socket

<a href="#">2829-788</a>	<b>18X8</b>	1	0	300	564.26
<a href="#">280-100944</a>	<b>18X10</b>	1	0	300	493.71
<a href="#">280-100945</a>	<b>18X12</b>	1	0	300	442.09
<a href="#">280-100946</a>	<b>18X15</b>	1	0	300	216.07
<a href="#">2829-816</a>	<b>20X6</b>	1	0	300	923.56
<a href="#">2829-818</a>	<b>20X8</b>	1	0	300	879.31
<a href="#">2829-820</a>	<b>20X10</b>	1	0	300	813.00
<a href="#">2829-822</a>	<b>20X12</b>	1	0	300	747.21
<a href="#">2829-825</a>	<b>20X15</b>	1	0	300	611.06
<a href="#">280-100953</a>	<b>20X18</b>	1	0	300	316.22

PIP x IPS Coupling - Reducer

Socket x Socket

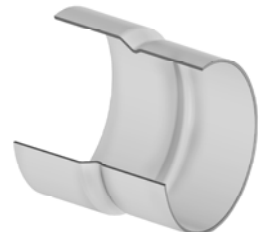


<a href="#">280-101536</a>	<b>6X4</b>	1	4	300	32.18
<a href="#">280-101537</a>	<b>8X6</b>	1	8	300	46.52
<a href="#">280-101538</a>	<b>10X8</b>	1	4	300	61.54
<a href="#">280-101534</a>	<b>12X8</b>	1	4	300	178.87
<a href="#">280-101539</a>	<b>12X10</b>	1	4	300	107.31
<a href="#">280-101540</a>	<b>15X12</b>	1	0	300	171.66

**Adapters**

IPS x PIP Adapter

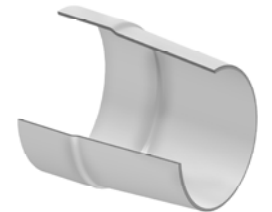
Socket x Socket



<a href="#">280-101649</a>	<b>6</b>	1	4	300	35.78
<a href="#">280-101650</a>	<b>8</b>	1	4	300	52.91
<a href="#">280-101651</a>	<b>10</b>	1	4	300	82.98
<a href="#">280-101652</a>	<b>12</b>	1	4	300	117.32

Concrete Adapter

Socket x Concrete



<a href="#">280-101761</a>	<b>6X6</b>	1	5	300	34.34
<a href="#">280-101762</a>	<b>8X8</b>	1	6	300	50.06
<a href="#">280-101763</a>	<b>10X10</b>	1	4	300	77.26
<a href="#">280-101764</a>	<b>12X12</b>	1	4	300	108.71
<a href="#">280-101765</a>	<b>12X14</b>	1	0	300	115.86
<a href="#">280-101766</a>	<b>15X14</b>	1	0	300	160.22

**Irrigation & Turf Product**  
**PVC Low Head PIP Fabricated Fittings, Risers & Accessories**



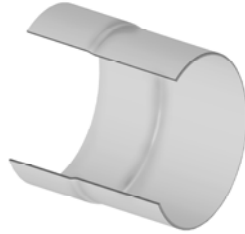
**Adapters**

Part Number	Size	Std Pk	Mstr Ctn	Prod Code	MSRP
-------------	------	--------	----------	-----------	------

**Concrete Adapter (continued)**

**Socket x Concrete**

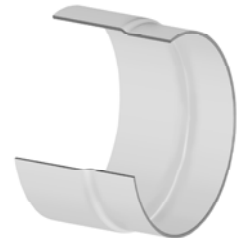
280-101767	15X15	1	0	300	164.57
280-101768	15X16	1	0	300	167.43
280-101769	18X18	1	0	300	194.60
280-101770	20X20	1	0	300	243.25



**Linegate Valve Adapter**

**Linegate x Socket**

280-101777	6	1	6	300	28.52
280-101778	8	1	6	300	32.36
280-101779	10	1	4	300	51.56
280-101780	12	1	4	300	72.99
280-101781	15	1	0	300	125.89
2845-180	18	1	0	300	181.27



**Linegate Valve PIP Adapter**

**Linegate x Socket**

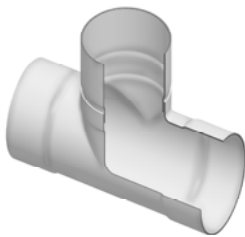
2845-180P	18	1	0	300	181.27
-----------	----	---	---	-----	--------

**Tees**

**Tee**

**Socket x Socket x Socket**

280-102502	6	1	8	300	54.34
280-102499	6X2	1	6	300	42.92
280-102500	6X3	1	4	300	46.52
280-102501	6X4	1	4	300	48.67
280-102507	8	1	2	300	86.06
280-102503	8X2	1	2	300	55.36
280-102504	8X3	1	3	300	65.77
280-102505	8X4	1	2	300	68.64
280-102506	8X6	1	0	300	78.65
280-102508	10X2	1	0	300	87.25
280-102509	10X3	1	0	300	88.68
280-102510	10X4	1	0	300	90.89



Part Number	Size	Std Pk	Mstr Ctn	Prod Code	MSRP
-------------	------	--------	----------	-----------	------

**Tee (continued)**

**Socket x Socket x Socket**

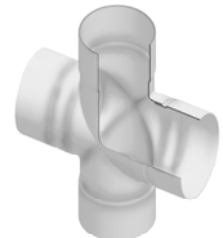
280-102511	10X6	1	0	300	93.00
280-102512	10X8	1	0	300	99.72
280-102513	10	1	0	300	107.32
280-102520	12	1	0	300	174.55
280-102514	12X2	1	2	300	114.47
280-102515	12X3	1	0	300	121.67
280-102516	12X4	1	0	300	127.33
280-102517	12X6	1	0	300	129.85
280-102518	12X8	1	0	300	135.99
280-102519	12X10	1	0	300	148.80
280-102528	15	1	0	300	346.32
280-102521	15X2	1	0	300	185.99
280-102522	15X3	1	0	300	185.99
280-102523	15X4	1	0	300	193.18
280-102524	15X6	1	0	300	198.87
280-102525	15X8	1	0	300	221.78
280-102526	15X10	1	0	300	247.52
280-102527	15X12	1	0	300	289.02
280-102537	18	1	0	300	602.48
280-102529	18X2	1	0	300	350.56
280-102530	18X3	1	0	300	353.39
280-102531	18X4	1	0	300	356.29
280-102532	18X6	1	0	300	363.44
280-102533	18X8	1	0	300	369.20
280-102534	18X10	1	0	300	403.55
280-102535	18X12	1	0	300	445.06
280-102536	18X15	1	0	300	486.55
280-102547	20	1	0	300	745.56
280-102538	20X2	1	0	300	443.61
280-102539	20X3	1	0	300	448.19
280-102540	20X4	1	0	300	455.03
280-102541	20X6	1	0	300	469.39
280-102542	20X8	1	0	300	479.38
280-102543	20X10	1	0	300	530.88
280-102544	20X12	1	0	300	563.81
280-102545	20X15	1	0	300	605.36
280-102546	20X18	1	0	300	681.15

**Crosses**

**Cross**

**Socket x Socket x Socket x Socket**

280-103286	6	1	0	300	90.13
280-103283	6X2	1	0	300	71.54
280-103284	6X3	1	0	300	71.54
280-103285	6X4	1	4	300	78.65
280-103291	8	1	0	300	123.09
280-103287	8X2	1	0	300	100.14





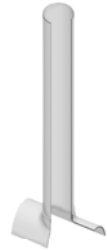
**Irrigation & Turf Product**  
**PVC Low Head PIP Fabricated Fittings, Risers & Accessories**

**Crosses**

Part Number	Size	Std Pk	Mstr Ctn	Prod Code	MSRP
<b>CROSS (continued)</b>					
<b>Socket x Socket x Socket</b>					
280-103288	8X3	1	0	300	100.14
280-103289	8X4	1	0	300	107.31
280-103290	8X6	1	0	300	112.99
280-103297	10	1	0	300	167.43
280-103292	10X2	1	2	300	100.14
280-103293	10X3	1	0	300	103.75
280-103294	10X4	1	0	300	107.31
280-103295	10X6	1	0	300	120.20
280-103296	10X8	1	0	300	137.32
280-103304	12	1	0	300	233.23
280-103303	12X10	1	0	300	198.87
280-103298	12X2	1	0	300	135.23
280-103299	12X3	1	0	300	136.61
280-103300	12X4	1	0	300	140.20
280-103301	12X6	1	0	300	151.66
280-103302	12X8	1	0	300	164.57
280-103321	15	1	0	300	445.06
280-103313	15X2	1	0	300	198.87
280-103314	15X3	1	0	300	203.19
280-103315	15X4	1	0	300	213.23
280-103316	15X6	1	0	300	226.08
280-103317	15X8	1	0	300	243.25
280-103318	15X10	1	0	300	287.64
280-103319	15X12	1	0	300	346.32
280-103342	18	1	0	300	714.06
280-103332	18X2	1	0	300	386.36
280-103333	18X3	1	0	300	389.97
280-103334	18X4	1	0	300	393.55
280-103335	18X6	1	0	300	403.55
280-103336	18X8	1	0	300	414.98
280-103337	18X10	1	0	300	472.19
280-103338	18X12	1	0	300	502.34
280-103340	18X15	1	0	300	572.44
280-103354	20	1	0	300	940.21
280-103343	20X2	1	0	300	542.33
280-103344	20X3	1	0	300	546.62
280-103345	20X4	1	0	300	550.96
280-103346	20X6	1	0	300	563.81
280-103347	20X8	1	0	300	578.14
280-103348	20X10	1	0	300	619.60
280-103349	20X12	1	0	300	666.86
280-103351	20X15	1	0	300	698.33
280-103353	20X18	1	0	300	819.98

**Riser Extensions**

Part Number	Size	Std Pk	Mstr Ctn	Prod Code	MSRP
<b>Orchard Riser</b>					
<b>Saddle x Riser</b>					
2880-04030	4X4	1	0	301	41.43
2880-53230	6X4	1	35	301	41.43
2880-06030	6X6	1	25	301	71.54
2880-58230	8X4	1	25	301	41.43
2880-58530	8X6	1	25	301	54.34
2880-08030	8X8	1	12	301	100.18
2880-62430	10X4	1	30	301	42.92
2880-62630	10X6	1	20	301	54.34
2880-62830	10X8	1	16	301	74.40
2880-10030	10X10	1	6	301	143.06
2880-66430	12X4	1	25	301	44.34
2880-66630	12X6	1	20	301	54.34
2880-66830	12X8	1	12	301	74.40
2880-67030	12X10	1	9	301	103.00
2880-12030	12X12	1	6	301	200.33
2880-72430	15X4	1	25	301	47.19
2880-72630	15X6	1	25	301	62.92
2880-72830	15X8	1	12	301	84.43
2880-73030	15X10	1	9	301	117.32
2880-73230	15X12	1	6	301	161.68
2880-15030	15X15	1	4	301	334.83
2880-78430	18X4	1	25	301	51.56
2880-78630	18X6	1	25	301	61.19
2880-78830	18X8	1	12	301	88.75
2880-79030	18X10	1	9	301	118.76
2880-79230	18X12	1	6	301	183.13
2880-79530	18X15	1	4	301	264.72
2880-18030	18X18	1	3	301	502.25
2880-81430	20X4	1	0	301	54.37
2880-81630	20X6	1	12	301	71.57
2880-81830	20X8	1	12	301	107.31
2880-82030	20X10	1	6	301	167.44
2880-82230	20X12	1	5	301	203.19
2880-82530	20X15	1	4	301	299.13
2880-82830	20X18	1	0	301	367.77
2880-20030	20X20	1	2	301	648.27



**Irrigation & Turf Product**  
**PVC Low Head PIP Fabricated Fittings, Risers & Accessories**



**Riser Extensions**

Part Number	Size	Std Pk	Mstr Ctn	Prod Code	MSRP
-------------	------	--------	----------	-----------	------

**Erosion Pot Riser**

**Saddle x Riser x Pot**



2881-53232	6X4X8	1	16	301	79.31
2881-06032	6X6X10	1	0	301	94.89
2881-58232	8X4X8	1	20	301	79.31
2881-58532	8X6X10	1	0	301	94.89
2881-08032	8X8X12	1	9	301	134.19
2881-62432	10X4X8	1	16	301	79.31
2881-62632	10X6X10	1	0	301	94.89
2881-62832	10X8X12	1	12	301	134.19
2881-10032	10X10X15	1	0	301	184.37
2881-66432	12X4X8	1	20	301	79.31
2881-66632	12X6X10	1	12	301	94.89
2881-66832	12X8X12	1	12	301	134.19
2881-67032	12X10X15	1	0	301	184.37
2881-12032	12X12X18	1	0	301	244.04
2881-72432	15X4X8	1	0	301	79.31
2881-72632	15X6X10	1	12	301	94.89
2881-72832	15X8X12	1	0	301	134.19
2881-73032	15X10X15	1	0	301	184.37
2881-73232	15X12X18	1	0	301	244.04
2881-15032	15X15X20	1	0	301	359.27
2881-78432	18X4X8	1	0	301	79.31
2881-78632	18X6X10	1	0	301	94.89
2881-78832	18X8X12	1	0	301	134.19
2881-79032	18X10X15	1	0	301	184.37
2881-79232	18X12X18	1	0	301	244.04
2881-79532	18X15X20	1	0	301	359.27
2881-81432	20X4X8	1	0	301	79.31
2881-81632	20X6X10	1	0	301	94.89
2881-81832	20X8X12	1	0	301	134.19
2881-82032	20X10X15	1	0	301	184.37
2881-82232	20X12X18	1	0	301	244.04
2881-82532	20X15X20	1	0	301	359.27

**Mechanical Vent Assembly**

**Saddle x Riser/Vent**



2882-420	4X2	1	10	301	78.65
2882-422	4X3	1	0	301	121.59
2882-528	6X2	1	10	301	78.65
2882-530	6X3	1	10	301	121.59

Part Number	Size	Std Pk	Mstr Ctn	Prod Code	MSRP
-------------	------	--------	----------	-----------	------

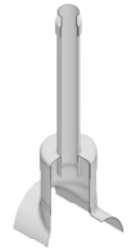
**Mechanical Vent Assembly (continued)**

**Saddle x Riser/Vent**

2882-532	6X4	1	5	301	168.87
2882-578	8X2	1	8	301	78.65
2882-580	8X3	1	4	301	121.59
2882-582	8X4	1	8	301	168.87
2882-621	10X2	1	10	301	78.65
2882-623	10X3	1	5	301	121.59
2882-624	10X4	1	3	301	168.87
2882-661	12X2	1	10	301	78.65
2882-663	12X3	1	5	301	121.59
2882-664	12X4	1	4	301	168.87
2882-721	15X2	1	0	301	78.66
2882-723	15X3	1	6	301	121.59
2882-724	15X4	1	4	301	168.87
2882-781	18X2	1	0	301	78.66
2882-783	18X3	1	0	301	121.59
2882-784	18X4	1	4	301	168.87
2882-811	20X2	1	0	301	78.66
2882-813	20X3	1	0	301	121.59
2882-814	20X4	1	5	301	168.87

**Mechanical Vent Riser**

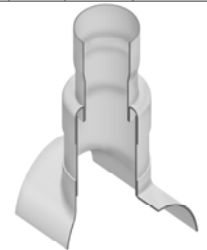
**Saddle x Riser/Vent x Chamber**



2883-52842	6X2X4	1	0	301	91.58
2883-57842	8X2X6	1	0	301	98.75
2883-58042	8X3X6	1	25	301	124.46
2883-62142	10X2X8	1	12	301	120.20
2883-62342	10X3X8	1	8	301	143.06
2883-62442	10X4X8	1	12	301	168.87
2883-66142	12X2X10	1	6	301	154.52
2883-66342	12X3X10	1	16	301	175.98
2883-66442	12X4X10	1	12	301	200.33
2883-72442	15X4X12	1	6	301	260.41
2883-78442	18X4X15	1	4	301	336.26
2883-81442	20X4X18	1	0	301	473.67

**Vent Base**

**Saddle x Riser x Outlet**



2888-532020	6X4X2	1	2	301	59.41
2888-585030	8X6X3	1	0	301	183.81
2888-585040	8X6X4	1	4	301	93.00
2888-628060	10X8X6	1	0	301	143.06
2888-670060	12X10X6	1	0	301	151.66



**Irrigation & Turf Product**  
**PVC Low Head PIP Fabricated Fittings, Risers & Accessories**

**Riser Extensions**

Part Number	Size	Std Pk	Mstr Ctn	Prod Code	MSRP
-------------	------	--------	----------	-----------	------

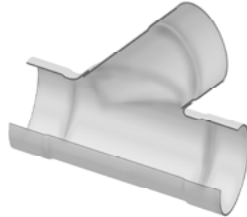
Vent Base (continued)

**Saddle x Riser x Outlet**

2888-732080	15X12X8	1	0	301	227.51
2888-795080	18X15X8	1	0	301	314.85
2888-828080	20X18X8	1	0	301	569.59

**Wyes**

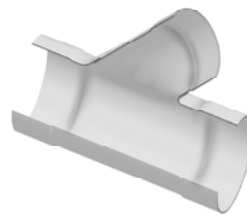
Wye



**Socket x Socket x Socket**

2875-060	6	1	2	300	100.43
2875-080	8	1	0	300	132.83
2875-100	10	1	0	300	172.82
2875-120	12	1	0	300	240.77
2875-150	15	1	0	300	372.47
2875-183	18	1	0	300	895.63
2875-200	20	1	0	300	1201.06

Wye - Reducing

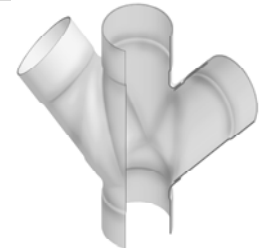


**Socket x Socket x Socket**

2875-532	6X4	1	4	300	78.32
2875-585	8X6	1	0	300	115.86
2875-626	10X6	1	0	300	148.18
2875-628	10X8	1	0	300	156.29
2875-666	12X6	1	0	300	162.85
2875-668	12X8	1	0	300	186.95
2875-670	12X10	1	0	300	199.71
2875-726	15X6	1	0	300	219.53
2875-728	15X8	1	0	300	237.93
2875-730	15X10	1	0	300	260.58
2875-732	15X12	1	0	300	286.08
2875-786	18X6	1	0	300	354.09
2875-788	18X8	1	0	300	359.69
2875-790	18X10	1	0	300	393.06
2875-792	18X12	1	0	300	433.49
2875-795	18X15	1	0	300	473.94
2875-816	20X6	1	0	300	442.59
2875-818	20X8	1	0	300	449.60
2875-820	20X10	1	0	300	491.32
2875-822	20X12	1	0	300	541.86
2875-825	20X15	1	0	300	592.43
2875-828	20X18	1	0	300	1042.35

Part Number	Size	Std Pk	Mstr Ctn	Prod Code	MSRP
-------------	------	--------	----------	-----------	------

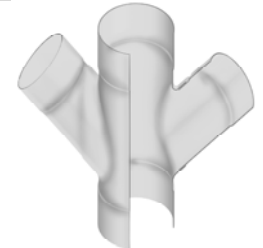
Double Wye



**Socket x Socket x Socket x Socket**

2876-060	6	1	2	300	157.73
2876-080	8	1	0	300	179.67
2876-100	10	1	0	300	300.87
2876-120	12	1	0	300	359.35
2876-150	15	1	0	300	555.94
2876-183	18	1	0	300	1507.37
2876-200	20	1	0	300	2142.87

Double Wye - Reducing



**Socket x Socket x Socket x Socket**

2876-585	8X6	1	0	300	126.85
2876-626	10X6	1	0	300	179.67
2876-628	10X8	1	0	300	198.73
2876-666	12X6	1	0	300	243.06
2876-668	12X8	1	0	300	279.02
2876-670	12X10	1	0	300	333.59
2876-726	15X6	1	0	300	327.63
2876-728	15X8	1	0	300	355.09
2876-730	15X10	1	0	300	388.94
2876-732	15X12	1	0	300	527.36
2876-786	18X6	1	0	300	528.52
2876-788	18X8	1	0	300	536.85
2876-790	18X10	1	0	300	586.65
2876-792	18X12	1	0	300	647.02
2876-795	18X15	1	0	300	707.37
2876-816	20X6	1	0	300	729.97
2876-818	20X8	1	0	300	749.01
2876-820	20X10	1	0	300	766.73
2876-822	20X12	1	0	300	808.75
2876-825	20X15	1	0	300	884.22
2876-828	20X18	1	0	300	1635.23

**Irrigation & Turf Product**  
**PVC Low Head PIP Fabricated Fittings, Risers & Accessories**



**Caps**

Part Number	Size	Std Pk	Mstr Ctn	Prod Code	MSRP
-------------	------	--------	----------	-----------	------

End Cap



Socket

280-107539	4 IPS	1	10	300	12.87
280-107540	6	1	10	300	14.31
280-107541	8	10	0	300	24.29
280-107542	10	1	10	300	38.66
280-107543	12	1	10	300	60.08
280-107545	15	1	5	300	84.43
280-107547	18	1	5	300	154.52
280-107548	20	1	5	300	207.48

Surface Reducer



Socket

280-102013	6X2	1	10	300	22.87
280-102015	6X3	1	10	300	22.87
280-102016	6X4	1	10	300	22.87
280-102018	8X2	1	10	300	31.43
280-102020	8X3	1	10	300	31.43
280-102021	8X4	1	10	300	31.43
280-102022	8X6	1	10	300	31.43
280-102024	10X2	1	10	300	62.92
280-102026	10X3	1	10	300	62.92
280-102027	10X4	1	10	300	62.92
280-102028	10X6	1	10	300	62.92
280-102029	10X8	1	10	300	62.92
280-102031	12X2	1	10	300	77.26
280-102033	12X3	1	10	300	77.26
280-102034	12X4	1	10	300	77.26
280-102035	12X6	1	10	300	77.26
280-102036	12X8	1	10	300	77.26
280-102037	12X10	1	10	300	77.26
280-102048	15X2	1	5	300	108.71
280-102050	15X3	1	5	300	108.71
280-102051	15X4	1	5	300	108.71
280-102052	15X6	1	5	300	108.71
280-102053	15X8	1	5	300	108.71
280-102054	15X10	1	5	300	108.71
280-102055	15X12	1	5	300	108.71
280-102067	18X2	1	5	300	163.12
280-102069	18X3	1	4	300	163.12
280-102070	18X4	1	5	300	163.12

Part Number	Size	Std Pk	Mstr Ctn	Prod Code	MSRP
-------------	------	--------	----------	-----------	------

Surface Reducer (continued)

Socket

280-102071	18X6	1	5	300	163.12
280-102072	18X8	1	5	300	163.12
280-102073	18X10	1	5	300	163.12
280-102074	18X12	1	5	300	163.12
280-102075	18X15	1	5	300	163.12
280-102077	20X2	1	5	300	216.07
280-102136	20X3	1	5	300	216.07
280-102137	20X4	1	5	300	216.07
280-102138	20X6	1	5	300	216.07
280-102139	20X8	1	5	300	216.07
280-102140	20X10	1	5	300	216.07
280-102141	20X12	1	5	300	216.07
280-102142	20X15	1	5	300	216.07
280-102143	20X18	1	5	300	216.07

**Glue-On Saddles**

Saddle



Socket

280-101788	4X2	1	40	300	22.87
280-101789	6X2	1	10	300	22.87
280-101790	8X2	1	10	300	22.87
280-101791	10X2	1	10	300	22.87
280-101792	12X2	1	10	300	22.87
280-101793	15X2	1	10	300	22.87
280-101794	18X2	1	20	300	22.87
280-101795	20X2	1	10	300	24.29
280-101796	4X3	1	5	300	24.29
280-101797	6X3	1	10	300	24.29
280-101798	8X3	1	10	300	24.29
280-101799	10X3	1	10	300	24.29
280-101800	12X3	1	10	300	24.29
280-101801	15X3	1	10	300	24.29
280-101802	18X3	1	20	300	24.29
280-101803	20X3	1	10	300	36.06
280-101804	6X4	1	10	300	27.20
280-101805	8X4	1	10	300	27.20
280-101806	10X4	1	12	300	27.20
280-101807	12X4	1	10	300	27.20
280-101808	15X4	1	10	300	27.20
280-101809	18X4	1	10	300	27.20
280-101810	20X4	1	8	300	27.20
280-101811	8X6	1	8	300	34.34
280-101812	10X6	1	8	300	34.34
280-101813	12X6	1	8	300	34.34
280-101814	15X6	1	8	300	34.34
280-101815	18X6	1	10	300	34.34
280-101816	20X6	1	7	300	38.66



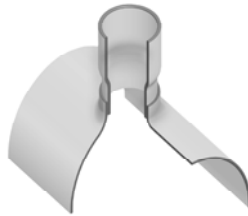


**Irrigation & Turf Product**  
**PVC Low Head PIP Fabricated Fittings, Risers & Accessories**

**Glue-On Saddles**

Part Number	Size	Std Pk	Mstr Ctn	Prod Code	MSRP
<b>Saddle (continued)</b>					
<b>Socket</b>					
280-101817	10X8	1	8	300	40.06
280-101818	12X8	1	8	300	40.06
280-101819	15X8	1	8	300	40.06
280-101820	18X8	1	8	300	44.34
280-101821	20X8	1	8	300	62.92
280-101822	12X10	1	10	300	48.67
280-101823	15X10	1	10	300	55.78
280-101824	18X10	1	10	300	57.21
280-101825	20X10	1	7	300	105.85
280-101826	15X12	1	0	300	74.40
280-101827	18X12	1	3	300	95.82
280-101828	20X12	1	0	300	115.86
280-101829	18X15	1	0	300	124.46
280-101830	20X15	1	0	300	158.81
280-101831	20X18	1	0	300	175.98

Stub Saddle



Socket

280-101883	4X2	1	10	300	28.52
280-101884	6X2	1	10	300	28.52
280-101885	8X2	1	10	300	28.52
280-101886	10X2	1	10	300	28.52
280-101887	12X2	1	10	300	30.04
280-101888	15X2	1	10	300	32.92
280-101889	18X2	1	10	300	32.92
280-101890	20X2	1	10	300	37.19
280-101891	4X3	1	10	300	34.34
280-101892	6X3	1	5	300	34.34
280-101893	8X3	1	5	300	34.34
280-101894	10X3	1	5	300	34.34
280-101895	12X3	1	5	300	37.19
280-101896	15X3	1	5	300	37.19
280-101897	18X3	1	10	300	37.19
280-101898	20X3	1	5	300	40.06
280-101899	6X4	1	10	300	40.06
280-101900	8X4	1	10	300	40.06
280-101901	10X4	1	10	300	40.06
280-101902	12X4	1	10	300	40.06
280-101903	15X4	1	10	300	40.06
280-101904	18X4	1	10	300	42.09
280-101905	20X4	1	10	300	42.92
280-101906	8X6	1	6	300	47.19
280-101907	10X6	1	8	300	47.19
280-101908	12X6	1	6	300	47.19
280-101909	15X6	1	8	300	50.06
280-101910	18X6	1	10	300	50.06

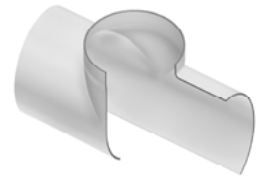
Part Number	Size	Std Pk	Mstr Ctn	Prod Code	MSRP
-------------	------	--------	----------	-----------	------

**Stub Saddle (continued)**

**Socket**

280-101911	20X6	1	7	300	57.21
280-101912	10X8	1	4	300	62.92
280-101913	12X8	1	3	300	62.92
280-101914	15X8	1	5	300	67.19
280-101915	18X8	1	5	300	71.54
280-101916	20X8	1	0	300	90.13
280-101917	12X10	1	3	300	82.98
280-101918	15X10	1	5	300	87.29
280-101919	18X10	1	4	300	88.75
280-101920	20X10	1	0	300	137.32
280-101921	15X12	1	0	300	124.46
280-101922	18X12	1	0	300	144.52
280-101923	20X12	1	0	300	164.57
280-101924	18X15	1	0	300	194.60
280-101925	20X15	1	0	300	230.37
280-101926	20X18	1	0	300	280.45

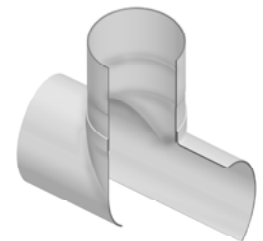
Same Size Saddle



Socket

280-101937	6X6	1	10	300	39.32
280-101938	8X8	1	5	300	57.21
280-101939	10X10	1	5	300	78.65
280-101940	12X12	1	4	300	114.47
280-101941	15X15	1	0	300	171.66
280-101942	18X18	1	0	300	293.36
280-101943	20X20	1	0	300	400.67

Same Size Stub Saddle

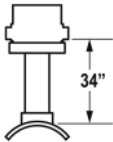


Socket

280-101949	6X6	1	5	300	68.64
280-101950	8X8	1	6	300	109.88
280-101951	10X10	1	0	300	134.46
280-101952	12X12	1	0	300	153.07
280-101953	15X15	1	0	300	228.98
280-101954	18X18	1	0	300	397.82
280-101955	20X20	1	0	300	465.05



<b>Distributing Gate Riser</b> (Saddle x Riser x Pot)			
<b>Gates Not Included In MSRP</b> (See CHART #1 on Next Page)			
	Size	Prod Code	Part Number
	<b>6x4x8</b>	301	2884-53234__
	<b>8x4x8</b>	301	2884-58234__
	<b>8x6x10</b>	301	2884-58534__
	<b>10x4x8</b>	301	2884-62434__
	<b>10x6x10</b>	301	2884-62634__
	<b>10x8x12</b>	301	2884-62834__
	<b>12x4x8</b>	301	2884-66434__
	<b>12x6x10</b>	301	2884-66634__
	<b>12x8x12</b>	301	2884-66834__
	<b>12x10x15</b>	301	2884-67034__
	<b>15x4x8</b>	301	2884-72334__
	<b>15x6x10</b>	301	2884-72634__
	<b>15x8x12</b>	301	2884-72834__
	<b>15x10x15</b>	301	2884-73034__
	<b>15x12x18</b>	301	2884-73234__
	<b>18x4x8</b>	301	2884-78434__
	<b>18x6x10</b>	301	2884-78634__
	<b>18x8x12</b>	301	2884-78834__
	<b>18x10x15</b>	301	2884-79034__
	<b>18x12x18</b>	301	2884-79234__
	<b>20x4x8</b>	301	2884-81434__
	<b>20x6x10</b>	301	2884-81634__
	<b>20x8x12</b>	301	2884-81834__
	<b>20x10x15</b>	301	2884-82034__
	<b>20x12x18</b>	301	2884-82234__



**HOW TO ORDER A  
DISTRIBUTING GATE RISER**

Choose the Distributing Gate Riser size required:

Example: 6 x 4 x 8  
 (6" Saddle x 4" Riser x 8" Pot)  
 Part Number 2884-53234

Next, choose the Gate size required from CHART #1:

Example: 2-1/2" Gates  
 (Code Number "2")

Next, add this Code Number to the end of the Part Number:

Example: 2884-53234 2\_\_

Next, choose the position required for the gates from CHART #2:

Example: Standard 2-Way Gates  
 (Code Number "05")

Next, add this Code Number to the very end of the Part Number:

Example: 2884-53234205

The Part Number is now complete for a  
 6" Saddle x 4" Riser x 8" Pot  
 with 2-1/2" Standard 2-Way Gates -

2884-53234205

**HOW TO CALCULATE A DISTRIBUTING GATE RISER  
TOTAL MSRP-1 EACH WITH GATES INSTALLED**

Find the base unit part number & price in MSRP-1:

Next, find the part number & price in MSRP-1 for the size of Gate required from CHART #1:

Next, multiply the Gate price by the number of Gates required:

Next, add this amount to the base unit price from MSRP-1 (See Chart 2 "Number of Outlets"), for the Total Price Each:



**Irrigation & Turf Product**  
**PVC Low Head PIP Fabricated Fittings, Risers & Accessories**

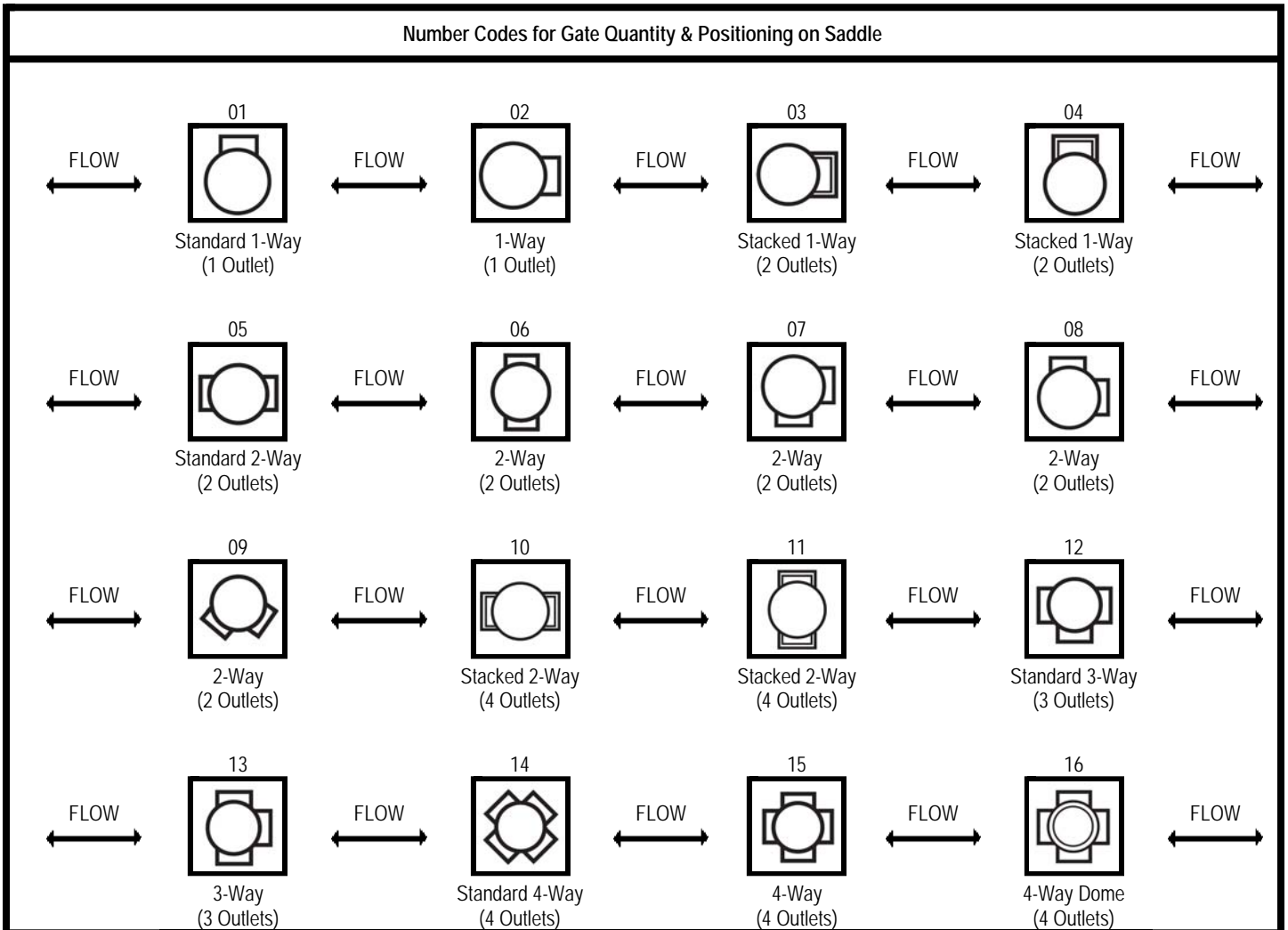
**CHART #1**

Part Number	Gate/Hole Size	Distributing Gate Size Code	Prod Code
280-108443	2" Gate	1	301
280-108444	2- 1/2" Gate	2	301
280-108445	3" Gate	3	301
280-108446	4" Gate	4	301

\* Hole Size Codes MUST be chosen ONLY when ordering with NO GATES INSTALLED.

Number code for Gate Hole positioning must also be chosen from CHART #2 below.

**CHART #2**





<b>Distributing Gate Repair Unit (Riser x Pot)</b>			
<b>Gates Not Included In MSRP (See CHART #3 on Next Page)</b>			
	<b>Size</b>	<b>Prod Code</b>	<b>Part Number</b>
	<b>4x8</b>	301	28840-42715__ __
	<b>6x10</b>	301	28840-53715__ __
	<b>8x12</b>	301	28840-59115__ __
	<b>10x15</b>	301	28840-63515__ __
	<b>12x18</b>	301	28840-67815__ __

**HOW TO ORDER DISTRIBUTING GATE REPAIR UNIT**

Choose the Repair Unit size required:  
 Example: 4 x 8 Distributing Gate Repair Unit  
 (4" Riser x 8" Pot  
 Part Number 28840-42715\_\_ \_\_  
 Next, choose the Gate size required from CHART #3:  
 Example: 2" Gate  
 (Code Number "1")  
 Next, add this Code Number to the end of the Part Number:  
 Example: 28840-42715 1\_\_ \_\_  
 Next, choose the position required for the gates from CHART #4:  
 Example: 4-Way  
 (Code Number "14")  
 Next, add this Code Number to the very end of the Part Number:  
 Example: 28840-427151 14  
 The Part Number is now complete for a  
 4" Riser x 8" Pot Distributing Gate Riser Repair Unit with 2" 4-Way Gates –

28840-42715114

**HOW TO CALCULATE DISTRIBUTING GATE REPAIR UNIT  
 TOTAL MSRP EACH WITH GATES INSTALLED**

Find the base unit part number & price in MSRP-1:  
 Next, find the part number & price in MSRP-1 for the size of Gate required from CHART #3:  
 Next, multiply the Gate price by the number of Gates required:  
 Next, add this amount to the base unit price from MSRP-1, (See Chart 4 "Number of Outlets"), for the total Price Each:



**Irrigation & Turf Product**  
**PVC Low Head PIP Fabricated Fittings, Risers & Accessories**

**CHART #3**





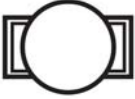



Gate/Hole Size	Gate Size Code	Prod Code
2" Gate	1	301
2- 1/2" Gate	2	301
3" Gate	3	301
4" Gate	4	301
2" Hole*	5	301
2- 1/2" Hole*	6	301
3" Hole*	7	301
4" Hole*	8	301

\* Hole Size Codes MUST be chosen ONLY when ordering with NO GATES INSTALLED.

Number code for Gate Hole positioning must also be chosen from CHART #4 below.

NOTE: 3" Rite Flo Gates can be installed on 6" Risers ONLY.

**CHART #4**

Repair Unit Number Codes for Gate Quantity & Positioning			
02  1-Way (1 Outlet)	04  Stacked 1-Way (2 Outlets)	06  2-Way (2 Outlets)	08  2-Way (2 Outlets)
10  Stacked 2-Way (4 Outlets)	12  3-Way (3 Outlets)	14  4-Way (4 Outlets)	16  4-Way Dome (4 Outlets)

All Low Head PIP Fabricated Fittings showing size outlets of 4" and under are IPS size on that outlet