



PVC Class 63, 100, 125, 160 & 200 IPS Fabricated Fittings & Molded Class 125



PRODUCT

Contact Spears® for any Information not found.



Fabricated Fittings Product
PVC Class 63, 100, 125, 160 & 200 IPS Fabricated Fittings & Molded Class 125

	Size	CLASS 63	CLASS 100	CLASS 125	CLASS 160	CLASS 200
		Prod Code: 340 Part Number MSRP	Prod Code: 350 Part Number MSRP	Prod Code: 360 Part Number MSRP	Prod Code: 370 Part Number MSRP	Prod Code: 380 Part Number MSRP

Tee (Gasket x Spigot x Fipt)

	4X1-1/2	---	---	---	340-102356 221.01	350-102356 257.61
	4X2	---	---	---	340-102357 221.01	350-102357 257.61
	4X2-1/2	---	---	---	340-102358 235.98	350-102358 273.89
	4X3	---	---	---	340-102359 235.98	---
	6X1-1/2	---	---	---	340-102361 321.42	350-102361 334.97
	6X2	---	---	---	340-102362 321.42	350-102362 334.97
	6X2-1/2	---	---	---	340-102363 341.77	350-102363 349.87
	6X3	---	---	---	340-102364 341.77	350-102364 349.87
	6X4	---	---	---	340-102365 355.27	350-102365 368.84
	8X1-1/2	---	---	---	340-102366 391.91	350-102366 477.34
	8X2	---	---	---	340-102367 391.91	350-102367 477.34
	8X2-1/2	---	---	---	340-102368 412.24	350-102368 497.67
	8X3	---	---	---	340-102369 412.24	350-102369 497.67
	8X4	---	---	---	340-102370 446.15	350-102370 517.99
	10X2	---	---	---	340-102372 665.84	350-102372 726.87
	10X2-1/2	---	---	---	340-102373 706.54	---
	10X3	---	---	---	340-102374 706.54	350-102374 762.13
	10X4	---	---	---	340-102375 743.12	350-102375 801.48
	12X2	---	---	---	340-102377 886.89	350-102377 954.68
	12X2-1/2	---	---	---	340-102378 924.85	---
12X3	---	---	---	340-102379 924.85	350-102379 1006.19	
12X4	---	---	---	340-102380 968.27	350-102380 1057.77	

Tee (Gasket x Gasket x Fipt)

	4X1-1/2	---	---	---	340-102426 244.08	350-102426 267.17
	4X2	---	---	---	340-102427 244.08	350-102427 267.17
	4X2-1/2	---	---	---	340-102428 265.76	350-102428 287.48
	4X3	---	---	---	340-102429 265.76	350-102429 287.48
	6X1-1/2	---	---	---	340-102431 351.21	350-102431 368.84

Fabricated Fittings Product
PVC Class 63, 100, 125, 160 & 200 IPS Fabricated Fittings & Molded Class 125



Size	CLASS 63	CLASS 100	CLASS 125	CLASS 160	CLASS 200
	Prod Code: 340 Part Number MSRP	Prod Code: 350 Part Number MSRP	Prod Code: 360 Part Number MSRP	Prod Code: 370 Part Number MSRP	Prod Code: 380 Part Number MSRP

Tee (Gasket x Gasket x Fipt) (continued)

	6X2	---	---	---	340-102432 351.21	350-102432 368.84
	6X2-1/2	---	---	---	340-102433 364.79	350-102433 386.52
	6X3	---	---	---	340-102434 364.79	350-102434 386.52
	6X4	---	---	---	340-102435 375.63	350-102435 402.78
	8X1-1/2	---	---	---	340-102436 429.91	350-102436 515.32
	8X2	---	---	---	340-102437 429.91	350-102437 515.32
	8X2-1/2	---	---	---	340-102438 455.64	350-102438 542.43
	8X3	---	---	---	340-102439 455.64	350-102439 542.43
	8X4	---	---	---	340-102440 484.13	350-102440 747.86
	10X2	---	---	---	340-102442 728.21	350-102442 801.48
	10X2-1/2	---	---	---	340-102443 762.13	350-102443 846.25
	10X3	---	---	---	340-102444 762.13	350-102444 846.25
	10X4	---	---	---	340-102445 804.14	350-102445 880.07
	12X2	---	---	---	340-102447 939.38	350-102447 1022.51
	12X2-1/2	---	---	---	340-102448 985.88	---
	12X3	---	---	---	340-102449 985.88	350-102449 1074.04
12X4	---	---	---	340-102450 1036.03	350-102450 1125.57	

Tee (Socket x Socket x Socket)

	6	310-102502 84.28	320-102502 169.93	330-102502 188.91	340-102502 333.09	350-102502 352.49
	6X2	310-102499 66.57	320-102499 88.36	330-102499 106.01	340-102499 264.40	350-102499 274.61
	6X3	310-102500 70.68	320-102500 99.21	330-102500 112.80	340-102500 281.32	350-102500 288.27
	6X4	310-102501 77.49	320-102501 108.77	330-102501 126.40	340-102501 291.52	350-102501 308.63
	8	310-102507 141.42	320-102507 214.78	330-102507 254.25	340-102507 522.13	350-102507 621.12
	8X2	310-102503 92.43	320-102503 116.91	330-102503 126.40	340-102503 336.33	350-102503 371.58
	8X3	310-102504 99.21	320-102504 130.47	330-102504 141.42	340-102504 377.00	350-102504 402.78
	8X4	310-102505 106.01	320-102505 148.13	330-102505 161.72	340-102505 398.69	350-102505 423.11
	8X6	310-102506 126.40	320-102506 190.33	330-102506 201.18	340-102506 462.44	350-102506 501.74
	10	310-102513 210.69	320-102513 299.02	330-102513 413.26	340-102513 810.93	350-102513 985.88

Made in the U.S.A.

Suitable for Oil-Free air handling to 25 psi, not for distribution of compressed air or gas

Effective 02/01/2020 See MSRP-1 Sheet or Check Spears® On-line Catalog @ www.spearsmfg.com for Pricing



Fabricated Fittings Product
PVC Class 63, 100, 125, 160 & 200 IPS Fabricated Fittings & Molded Class 125

Size	CLASS 63	CLASS 100	CLASS 125	CLASS 160	CLASS 200
	Prod Code: 340 Part Number MSRP	Prod Code: 350 Part Number MSRP	Prod Code: 360 Part Number MSRP	Prod Code: 370 Part Number MSRP	Prod Code: 380 Part Number MSRP

Tee (Socket x Socket x Socket) (continued)

	10X2	310-102508 126.40	320-102508 154.93	330-102508 198.46	340-102508 476.01	350-102508 566.82
	10X3	310-102509 148.13	320-102509 179.42	330-102509 233.82	340-102509 511.28	350-102509 603.43
	10X4	310-102510 168.59	320-102510 201.18	330-102510 263.71	340-102510 553.31	350-102510 648.20
	10X6	310-102511 183.53	320-102511 221.59	330-102511 292.23	340-102511 608.88	350-102511 713.28
	10X8	310-102512 195.75	320-102512 256.92	330-102512 347.99	340-102512 686.19	350-102512 801.48
	12	310-102520 289.54	320-102520 471.73	330-102520 619.87	340-102520 1154.07	350-102520 1524.23
	12X2	310-102514 217.55	320-102514 233.82	330-102514 305.89	340-102514 629.20	350-102514 747.22
	12X3	310-102515 224.27	320-102515 247.41	330-102515 331.69	340-102515 671.29	350-102515 805.52
	12X4	310-102516 232.47	320-102516 275.96	330-102516 367.06	340-102516 717.39	350-102516 859.71
	12X6	310-102517 239.24	320-102517 315.38	330-102517 413.26	340-102517 797.41	350-102517 975.02
	12X8	310-102518 252.86	320-102518 347.99	330-102518 464.97	340-102518 888.23	350-102518 1040.14
	12X10	310-102519 259.60	320-102519 415.99	330-102519 551.91	340-102519 992.66	350-102519 1217.77
	15X2	310-102521 ² 258.31	---	---	---	---
	15X3	310-102522 ² 271.86	---	---	---	---
	15X4	310-102523 ² 301.80	---	---	---	---
	15X6	310-102524 ² 308.60	---	---	---	---
	15X8	310-102525 ² 331.69	---	---	---	---
	15X10	310-102526 ² 347.99	---	---	---	---
	15X12	310-102527 ² 392.86	---	---	---	---
15X15	310-102528 ¹ 500.26	---	---	---	---	

¹ 15" PIP O.D.

² 15" PIP O.D. x IPS

Tee (Gasket x Spigot x Gasket)

	4	---	320-103058 135.93	330-103058 141.42	340-103058 258.31	350-103058 289.81
	6	---	320-103062 197.13	330-103062 210.69	340-103062 400.03	350-103062 461.04
	6X4	---	320-103061 168.59	330-103061 203.88	340-103061 355.27	350-103061 382.40
	8	---	320-103067 272.48	330-103067 350.74	340-103067 593.97	350-103067 747.22
	8X4	---	320-103065 212.68	330-103065 232.47	340-103065 443.42	350-103065 539.74
	8X6	---	320-103066 247.41	330-103066 293.65	340-103066 490.91	350-103066 614.31

Fabricated Fittings Product
PVC Class 63, 100, 125, 160 & 200 IPS Fabricated Fittings & Molded Class 125



Size	CLASS 63	CLASS 100	CLASS 125	CLASS160	CLASS 200
	Prod Code: 340 Part Number MSRP	Prod Code: 350 Part Number MSRP	Prod Code: 360 Part Number MSRP	Prod Code: 370 Part Number MSRP	Prod Code: 380 Part Number MSRP

Tee (Gasket x Spigot x Gasket) (continued)

	10	---	320-103073 462.22	330-103073 561.46	340-103073 972.35	350-103073 1226.96
	10X4	---	320-103070 318.09	330-103070 406.44	340-103070 652.31	350-103070 819.08
	10X6	---	320-103071 350.74	330-103071 441.84	340-103071 713.28	350-103071 893.66
	10X8	---	320-103072 390.17	330-103072 490.76	340-103072 801.48	350-103072 1008.94
	12	---	320-103080 647.09	330-103080 772.16	---	---
	12X4	---	320-103076 429.60	330-103076 526.16	340-103076 852.97	350-103076 1071.28
	12X6	---	320-103077 458.13	330-103077 532.89	340-103077 938.43	350-103077 1179.82
	12X8	---	320-103078 507.06	330-103078 561.46	340-103078 1040.14	350-103078 1295.07
	12X10	---	320-103079 577.77	330-103079 630.79	340-103079 1177.11	350-103079 1465.93
	12X12	---	---	---	340-103080 1380.45	---

Tee (Gasket x Gasket x Gasket)

	4	---	320-103170 163.12	330-103170 222.87	340-103170 256.33	350-103170 317.33
	6	---	320-103174 190.33	330-103174 252.86	340-103174 427.17	350-103174 463.76
	6X4	---	320-103173 168.59	330-103173 239.24	340-103173 368.84	350-103173 395.97
	8	---	320-103179 337.12	330-103179 364.79	340-103179 665.84	350-103179 785.18
	8X4	---	320-103177 252.86	330-103177 281.40	340-103177 522.13	350-103177 580.38
	8X6	---	320-103178 259.60	330-103178 318.09	340-103178 580.38	350-103178 641.47
	10	---	320-103185 490.76	330-103185 617.17	340-103185 1091.65	350-103185 1281.54
	10X4	---	320-103182 376.57	330-103182 467.64	340-103182 819.08	350-103182 835.34
	10X6	---	320-103183 403.77	330-103183 488.02	340-103183 869.26	350-103183 907.27
	10X8	---	320-103184 439.09	330-103184 568.26	340-103184 972.35	350-103184 1022.51
	12	---	320-103192 682.47	330-103192 893.15	340-103192 1517.49	350-103192 1772.44
	12X4	---	320-103188 481.21	330-103188 568.26	340-103188 1040.14	350-103188 1087.59
	12X6	---	320-103189 493.51	330-103189 584.55	340-103189 1136.40	350-103189 1202.87
	12X8	---	320-103190 519.33	330-103190 701.51	340-103190 1245.15	350-103190 1315.40
	12X10	---	320-103191 617.17	330-103191 747.73	340-103191 1398.18	350-103191 1488.99



Fabricated Fittings Product
PVC Class 63, 100, 125, 160 & 200 IPS Fabricated Fittings & Molded Class 125

	Size	CLASS 63	CLASS 100	CLASS 125	CLASS 160	CLASS 200
		Prod Code: 340 Part Number MSRP	Prod Code: 350 Part Number MSRP	Prod Code: 360 Part Number MSRP	Prod Code: 370 Part Number MSRP	Prod Code: 380 Part Number MSRP

Reinforced Tee (Socket x Socket x Fipt)

	6X2	---	---	330-202152 95.16	---	---
	6X3	---	---	330-202154 108.77	---	---
	6X4	---	---	330-202155 123.66	---	---
	8X2	---	---	330-202157 137.29	---	---
	8X3	---	---	330-202159 160.40	---	---
	8X4	---	---	330-202160 175.32	---	---
	10X2	---	---	330-202162 212.03	---	---
	10X3	---	---	330-202164 247.41	---	---
	10X4	---	---	330-202165 270.51	---	---
	12X2	---	---	330-202167 305.89	---	---
	12X3	---	---	330-202169 341.24	---	---
	12X4	---	---	330-202170 376.57	---	---

Reinforced Tee (Socket x Spigot x Fipt)

	6X2	---	---	330-202222 95.16	---	---
	6X3	---	---	330-202224 108.77	---	---
	6X4	---	---	330-202225 123.66	---	---
	8X2	---	---	330-202227 135.93	---	---
	8X3	---	---	330-202229 152.19	---	---
	8X4	---	---	330-202230 167.16	---	---
	10X2	---	---	330-202232 201.18	---	---
	10X3	---	---	330-202234 235.15	---	---
	10X4	---	---	330-202235 259.60	---	---
	12X2	---	---	330-202237 290.91	---	---
	12X3	---	---	330-202239 324.91	---	---
	12X4	---	---	330-202240 361.63	---	---

Fabricated Fittings Product
PVC Class 63, 100, 125, 160 & 200 IPS Fabricated Fittings & Molded Class 125



Size	CLASS 63	CLASS 100	CLASS 125	CLASS 160	CLASS 200
	Prod Code: 340 Part Number MSRP	Prod Code: 350 Part Number MSRP	Prod Code: 360 Part Number MSRP	Prod Code: 370 Part Number MSRP	Prod Code: 380 Part Number MSRP

Reinforced Tee (Gasket x Spigot x Fipt)

	6X2	---	---	330-202362 163.12	---	---
	6X3	---	---	330-202364 186.19	---	---
	6X4	---	---	330-202365 197.13	---	---
	8X2	---	---	330-202367 203.88	---	---
	8X3	---	---	330-202369 217.55	---	---
	8X4	---	---	330-202370 232.47	---	---
	10X2	---	---	330-202372 308.60	---	---
	10X3	---	---	330-202374 333.05	---	---
	10X4	---	---	330-202375 365.68	---	---
	12X2	---	---	330-202377 421.42	---	---
	12X3	---	---	330-202379 456.76	---	---
	12X4	---	---	330-202380 490.76	---	---

Reinforced Tee (Gasket x Gasket x Fipt)

	6X2	---	---	330-202432 197.13	---	---
	6X3	---	---	330-202434 210.69	---	---
	6X4	---	---	330-202435 224.27	---	---
	8X2	---	---	330-202437 246.05	---	---
	8X3	---	---	330-202439 259.60	---	---
	8X4	---	---	330-202440 281.40	---	---
	10X2	---	---	330-202442 383.37	---	---
	10X3	---	---	330-202444 403.77	---	---
	10X4	---	---	330-202445 445.88	---	---
	12X2	---	---	330-202447 519.33	---	---
	12X3	---	---	330-202449 568.26	---	---
	12X4	---	---	330-202450 594.14	---	---

90° Elbow (Socket x Socket)

	6	310-100812 92.43	320-100812 119.59	330-100812 133.20	340-100812 343.08	350-100812 371.58
	8	310-100813 126.40	320-100813 183.53	330-100813 218.82	340-100813 476.01	350-100813 539.74

Made in the U.S.A.

Suitable for Oil-Free air handling to 25 psi, not for distribution of compressed air or gas

Effective 02/01/2020 See MSRP-1 Sheet or Check Spears® On-line Catalog @ www.spearsmfg.com for Pricing



Fabricated Fittings Product
PVC Class 63, 100, 125, 160 & 200 IPS Fabricated Fittings & Molded Class 125

	Size	CLASS 63	CLASS 100	CLASS 125	CLASS 160	CLASS 200
		Prod Code: 340 Part Number MSRP	Prod Code: 350 Part Number MSRP	Prod Code: 360 Part Number MSRP	Prod Code: 370 Part Number MSRP	Prod Code: 380 Part Number MSRP

90° Elbow (Socket x Socket) (continued)

	10	310-100814 197.13	320-100814 286.83	330-100814 346.65	340-100814 724.17	350-100814 889.59
	12	310-100815 281.40	320-100815 399.63	330-100815 530.20	340-100815 1049.61	350-100815 1193.39
	15	310-100816 ¹ 526.16	---	---	---	---

¹ 15" PIP O.D.

90° Elbow (Gasket x Spigot)

	4	---	---	330-100877 206.45	---	---
	6	---	320-100878 241.99	330-100878 278.69	340-100878 454.26	350-100878 477.34
	8	---	320-100879 367.06	330-100879 450.01	340-100879 648.20	350-100879 695.69
	10	---	320-100880 534.27	330-100880 708.24	340-100880 938.43	350-100880 1145.88
	12	---	320-100881 716.44	330-100881 844.24	340-100881 1261.22	350-100881 1449.67

90° Elbow (Gasket x Gasket)

	4	---	---	330-100899 206.45	340-100899 307.82	350-100899 341.77
	6	---	320-100900 241.99	330-100900 278.69	340-100900 454.26	350-100900 477.34
	8	---	320-100901 367.06	330-100901 450.01	340-100901 648.20	350-100901 695.69
	10	---	320-100902 534.27	330-100902 708.24	340-100902 938.43	350-100902 1145.88
	12	---	320-100903 716.44	330-100903 844.24	3406-1202 1050.45	350-100903 1449.67

11-1/4° Elbow (Socket x Socket)

	4	---	---	330-100113 39.38	340-100113 43.60	350-100113 52.29
	6	310-100114 35.28	320-100114 46.24	330-100114 55.71	340-100114 61.01	350-100114 65.07
	8	310-100115 55.71	320-100115 70.68	330-100115 110.07	340-100115 105.76	350-100115 119.33
	10	310-100116 78.81	320-100116 112.80	330-100116 156.34	340-100116 183.09	350-100116 245.40
	12	310-100117 127.73	320-100117 176.75	330-100117 254.25	340-100117 287.48	350-100117 409.56
	15	310-100118 214.78	---	---	---	---

11-1/4° Elbow (Gasket x Spigot)

	4	---	---	330-100185 141.42	340-100185 156.93	350-100185 193.11
	6	---	320-100186 157.68	330-100186 197.13	340-100186 217.96	350-100186 238.67
	8	---	320-100187 193.04	330-100187 295.00	340-100187 319.64	350-100187 385.13
	10	---	320-100188 330.37	330-100188 392.86	340-100188 454.26	350-100188 668.52
	12	---	320-100189 441.84	330-100189 532.89	340-100189 661.78	350-100189 920.81

Fabricated Fittings Product
PVC Class 63, 100, 125, 160 & 200 IPS Fabricated Fittings & Molded Class 125



	Size	CLASS 63	CLASS 100	CLASS 125	CLASS 160	CLASS 200
		Prod Code: 340 Part Number MSRP	Prod Code: 350 Part Number MSRP	Prod Code: 360 Part Number MSRP	Prod Code: 370 Part Number MSRP	Prod Code: 380 Part Number MSRP

11-1/4° Elbow (Gasket x Gasket)

	4	---	---	330-100209 141.42	340-100209 156.93	350-100209 193.11
	6	---	320-100210 157.68	330-100210 197.13	340-100210 217.96	350-100210 238.67
	8	---	320-100211 193.04	330-100211 295.00	340-100211 319.64	350-100211 385.13
	10	---	320-100212 330.37	330-100212 392.86	340-100212 454.26	350-100212 668.52
	12	---	320-100213 441.84	330-100213 532.89	340-100213 661.78	350-100213 920.81

15° Elbow (Socket x Socket)

	4	---	---	330-100233 39.38	340-100233 43.60	350-100233 52.29
	6	310-100234 35.28	320-100234 46.24	330-100234 55.71	340-100234 61.01	350-100234 65.07
	8	310-100235 55.71	320-100235 70.68	330-100235 85.60	340-100235 105.76	350-100235 121.67
	10	310-100236 78.81	320-100236 112.80	330-100236 156.34	340-100236 183.09	350-100236 245.40
	12	310-100237 127.73	320-100237 176.75	330-100237 254.25	340-100237 287.48	350-100237 409.56
	15	310-100238 ¹ 214.78	---	---	---	---

¹ 15" PIP O.D.

15° Elbow (Gasket x Spigot)

	4	---	---	330-100305 141.42	340-100305 156.93	350-100305 193.11
	6	---	320-100306 157.68	330-100306 197.13	340-100306 217.96	350-100306 238.67
	8	---	320-100307 193.04	330-100307 295.00	340-100307 319.64	350-100307 385.13
	10	---	320-100308 330.37	330-100308 392.86	340-100308 454.26	350-100308 668.52
	12	---	320-100309 441.84	330-100309 532.89	340-100309 661.78	350-100309 920.81

15° Elbow (Gasket x Gasket)

	4	---	---	330-100329 141.42	340-100329 156.93	350-100329 193.11
	6	---	320-100330 157.68	330-100330 197.13	340-100330 217.96	350-100330 238.67
	8	---	320-100331 207.48	330-100331 295.00	340-100331 319.64	350-100331 385.13
	10	---	320-100332 307.62	330-100332 392.86	340-100332 454.26	350-100332 668.52
	12	---	320-100333 443.59	330-100333 532.89	340-100333 661.78	350-100333 920.81

22-1/2° Elbow (Socket x Socket)

	4	---	---	330-100353 39.38	340-100353 43.60	350-100353 52.29
	6	310-100354 35.28	320-100354 46.24	330-100354 55.71	340-100354 61.01	350-100354 65.07
	8	310-100355 55.71	320-100355 70.68	330-100355 85.60	340-100355 105.76	350-100355 121.67



Fabricated Fittings Product
PVC Class 63, 100, 125, 160 & 200 IPS Fabricated Fittings & Molded Class 125

	Size	CLASS 63	CLASS 100	CLASS 125	CLASS 160	CLASS 200
		Prod Code: 340 Part Number MSRP	Prod Code: 350 Part Number MSRP	Prod Code: 360 Part Number MSRP	Prod Code: 370 Part Number MSRP	Prod Code: 380 Part Number MSRP

22-1/2° Elbow (Socket x Socket) (continued)

	10	310-100356 78.81	320-100356 112.80	330-100356 156.34	340-100356 183.09	350-100356 245.40
	12	310-100357 127.73	320-100357 176.75	330-100357 254.25	340-100357 287.48	350-100357 409.56
	15	310-100358 ¹ 214.78	---	---	---	---

¹ 15" PIP O.D.

22-1/2° Elbow (Gasket x Spigot)

	4	---	---	330-100425 141.42	340-100425 156.93	350-100425 193.11
	6	---	320-100426 157.68	330-100426 197.13	340-100426 217.96	350-100426 238.67
	8	---	320-100427 193.04	330-100427 295.00	340-100427 319.64	350-100427 385.13
	10	---	320-100428 330.37	330-100428 392.86	340-100428 454.26	350-100428 668.52
	12	---	320-100429 441.84	330-100429 532.89	340-100429 661.78	350-100429 920.81

22-1/2° Elbow (Gasket x Gasket)

	4	---	---	330-100449 141.42	340-100449 156.93	350-100449 193.11
	6	---	320-100450 157.68	330-100450 197.13	340-100450 217.96	350-100450 238.67
	8	---	320-100451 193.04	330-100451 295.00	340-100451 319.64	350-100451 385.13
	10	---	320-100452 330.37	330-100452 392.86	340-100452 454.26	350-100452 668.52
	12	---	320-100453 441.84	330-100453 532.89	340-100453 661.78	350-100453 920.81

30° Elbow (Socket x Socket)

	4	---	---	330-100473 48.92	340-100473 103.00	350-100473 171.23
	6	310-100474 48.92	320-100474 61.19	330-100474 69.31	340-100474 252.23	350-100474 304.84
	8	310-100475 72.01	320-100475 101.95	330-100475 107.36	340-100475 343.08	350-100475 409.56
	10	310-100476 104.67	320-100476 156.34	330-100476 221.59	340-100476 531.60	350-100476 641.47
	12	310-100477 169.93	320-100477 228.38	330-100477 324.91	340-100477 770.26	350-100477 896.39
	15	310-100478 254.25	---	---	---	---

30° Elbow (Gasket x Spigot)

	4	---	---	330-100545 162.27	340-100545 195.27	350-100545 204.77
	6	---	320-100546 210.69	330-100546 224.27	340-100546 290.22	350-100546 355.27
	8	---	320-100547 259.60	330-100547 315.38	340-100547 427.17	350-100547 528.85
	10	---	320-100548 365.68	330-100548 463.54	340-100548 709.22	350-100548 882.87
	12	---	320-100549 505.74	330-100549 672.93	340-100549 938.43	350-100549 1107.96

Fabricated Fittings Product
PVC Class 63, 100, 125, 160 & 200 IPS Fabricated Fittings & Molded Class 125



	Size	CLASS 63	CLASS 100	CLASS 125	CLASS 160	CLASS 200
		Prod Code: 340 Part Number MSRP	Prod Code: 350 Part Number MSRP	Prod Code: 360 Part Number MSRP	Prod Code: 370 Part Number MSRP	Prod Code: 380 Part Number MSRP

30° Elbow (Gasket x Gasket)

	4	---	---	330-100569 162.27	340-100569 195.27	350-100569 204.77
	6	---	320-100570 210.69	330-100570 224.27	340-100570 290.22	350-100570 355.27
	8	---	320-100571 259.60	330-100571 315.38	340-100571 427.17	350-100571 528.85
	10	---	320-100572 365.68	330-100572 463.54	340-100572 709.22	350-100572 882.87
	12	---	320-100573 505.74	330-100573 672.93	340-100573 938.43	350-100573 1107.96

45° Elbow (Socket x Socket)

	6	310-100592 48.92	320-100592 61.19	330-100592 69.31	340-100592 252.23	350-100592 263.06
	8	310-100593 72.01	320-100593 101.95	330-100593 107.36	340-100593 343.08	350-100593 409.56
	10	310-100594 104.67	320-100594 156.34	330-100594 221.59	340-100594 531.60	350-100594 641.47
	12	310-100595 169.93	320-100595 228.38	330-100595 324.91	340-100595 770.26	350-100595 896.39
	15	310-100596 ¹ 254.25	---	---	---	---

¹ 15" PIP O.D.

45° Elbow (Gasket x Spigot)

	4	---	---	330-100657 162.27	340-100657 195.27	350-100657 204.77
	6	---	320-100658 164.57	330-100658 224.27	340-100658 290.22	350-100658 355.27
	8	---	320-100659 233.23	330-100659 315.38	340-100659 427.17	350-100659 528.85
	10	---	320-100660 334.81	330-100660 463.54	340-100660 709.22	350-100660 880.75
	12	---	320-100661 476.49	330-100661 672.93	340-100661 938.43	350-100661 1107.96

45° Elbow (Gasket x Gasket)

	4	---	---	330-100679 162.27	340-100679 195.27	350-100679 204.77
	6	---	320-100680 164.57	330-100680 224.27	340-100680 290.22	350-100680 355.27
	8	---	320-100681 233.23	330-100681 315.38	340-100681 427.17	350-100681 528.85
	10	---	320-100682 334.81	330-100682 463.54	340-100682 709.22	350-100682 882.87
	12	---	320-100683 505.71	330-100683 672.93	340-100683 938.43	350-100683 1107.96

60° Elbow (Socket x Socket)

	4	---	---	330-100701 87.49	---	---
	6	310-100702 92.43	320-100702 119.59	330-100702 133.20	340-100702 343.08	350-100702 371.58
	8	310-100703 126.40	320-100703 183.53	330-100703 218.82	340-100703 476.01	350-100703 539.74
	10	310-100704 197.13	320-100704 286.83	330-100704 346.65	340-100704 724.17	350-100704 889.59



Fabricated Fittings Product
PVC Class 63, 100, 125, 160 & 200 IPS Fabricated Fittings & Molded Class 125

	Size	CLASS 63	CLASS 100	CLASS 125	CLASS 160	CLASS 200
		Prod Code: 340 Part Number MSRP	Prod Code: 350 Part Number MSRP	Prod Code: 360 Part Number MSRP	Prod Code: 370 Part Number MSRP	Prod Code: 380 Part Number MSRP

60° Elbow (Socket x Socket) (continued)

	12	310-100705 281.40	320-100705 399.63	330-100705 530.20	340-100705 1049.61	350-100705 1193.39
	15	310-100706 ¹ 526.16	---	---	---	---

¹ 15" PIP O.D.

60° Elbow (Gasket x Spigot)

	4	---	---	330-100767 206.45	340-100767 307.82	350-100767 341.77
	6	---	320-100768 241.99	330-100768 278.69	340-100768 454.26	350-100768 477.34
	8	---	320-100769 367.06	330-100769 450.01	340-100769 648.20	350-100769 695.69
	10	---	320-100770 534.27	330-100770 708.24	340-100770 938.43	350-100770 1145.88
	12	---	320-100771 716.44	330-100771 844.24	340-100771 1261.22	350-100771 1449.67

60° Elbow (Gasket x Gasket)

	4	---	---	330-100789 206.45	340-100789 307.82	350-100789 341.77
	6	---	320-100790 241.99	330-100790 278.69	340-100790 454.26	350-100790 477.34
	8	---	320-100791 367.06	330-100791 450.01	340-100791 648.20	350-100791 695.69
	10	---	320-100792 534.27	330-100792 708.24	340-100792 938.43	350-100792 1145.88
	12	---	320-100793 716.44	330-100793 844.24	340-100793 1261.22	350-100793 1449.67

Coupling (Socket x Socket)

	6	310-100002 25.84	320-100002 31.22	330-100002 35.28	340-100002 42.02	350-100002 51.56
	8	310-100003 44.83	320-100003 54.35	330-100003 58.47	340-100003 77.34	350-100003 98.98
	10	310-100004 53.02	320-100004 89.72	330-100004 107.36	340-100004 122.79	350-100004 215.62
	12	310-100005 81.56	320-100005 140.00	330-100005 172.66	340-100005 196.64	350-100005 324.12
	15	310-100006 ¹ 122.36	---	---	---	---

¹ 15" PIP O.D.

Coupling (Gasket x Spigot)

	4	---	320-100067 47.56	330-100067 61.19	340-100067 68.27	350-100067 82.67
	6	---	320-100068 74.72	330-100068 81.56	340-100068 109.86	350-100068 116.62
	8	---	320-100069 120.98	330-100069 146.77	340-100069 174.95	350-100069 195.27
	10	---	320-100070 160.40	330-100070 195.75	340-100070 256.33	350-100070 324.12
	12	---	320-100071 221.59	330-100071 266.44	340-100071 385.13	350-100071 513.96

Fabricated Fittings Product
PVC Class 63, 100, 125, 160 & 200 IPS Fabricated Fittings & Molded Class 125



	Size	CLASS 63	CLASS 100	CLASS 125	CLASS 160	CLASS 200
		Prod Code: 340 Part Number MSRP	Prod Code: 350 Part Number MSRP	Prod Code: 360 Part Number MSRP	Prod Code: 370 Part Number MSRP	Prod Code: 380 Part Number MSRP

Coupling (Gasket x Gasket)

	4	---	320-100089 74.72	330-100089 88.36	340-100089 96.84	350-100089 106.53
	6	---	320-100090 112.80	330-100090 126.40	340-100090 132.83	350-100090 168.15
	8	---	320-100091 168.59	330-100091 183.53	340-100091 198.94	350-100091 222.40
	10	---	320-100092 239.24	330-100092 266.44	340-100092 321.42	350-100092 385.13
	12	---	320-100093 315.38	330-100093 365.68	340-100093 423.11	350-100093 573.60

Reducer Coupling (Socket x Socket)

	6X4	310-100926 35.28	320-100926 39.38	330-100926 44.83	340-100926 47.41	350-100926 59.65
	8X6	310-100928 46.24	320-100928 62.49	330-100928 69.31	340-100928 75.93	350-100928 82.67
	10X8	310-100931 65.23	320-100931 124.15	330-100931 111.45	340-100931 141.02	350-100931 168.15
	12X10	310-100935 114.22	320-100935 169.93	330-100935 212.03	340-100935 259.00	350-100935 276.64
	15X12	310-100940 ¹ 214.78	---	---	---	---

¹ 15" PIP O.D. x IPS

Reducer Coupling (Gasket x Spigot)

	6X4	---	320-101310 112.57	330-101310 133.20	340-101310 155.92	350-101310 172.21
	8X6	---	320-101312 161.72	330-101312 197.13	340-101312 242.71	350-101312 269.87
	10X8	---	320-101315 224.27	330-101315 266.44	340-101315 333.61	350-101315 379.69
	12X10	---	320-101319 318.09	330-101319 383.37	340-101319 539.74	350-101319 608.88

Reducer Coupling (Spigot x Gasket)

	6X4	---	320-101383 106.01	330-101383 119.59	340-101383 130.20	350-101383 149.14
	8X6	---	320-101385 141.42	330-101385 168.59	340-101385 215.62	350-101385 245.40
	10X8	---	320-101388 210.69	330-101388 259.60	340-101388 313.28	350-101388 368.84
	12X10	---	320-101392 315.38	330-101392 361.63	340-101392 508.54	350-101392 596.66

Reducer Coupling (Gasket x Gasket)

	6X4	---	320-101456 141.42	330-101456 154.93	340-101456 183.09	350-101456 200.68
	8X6	---	320-101458 203.88	330-101458 224.27	340-101458 294.25	350-101458 321.42
	10X8	---	320-101461 281.40	330-101461 350.74	340-101461 420.35	350-101461 614.31
	12X10	---	320-101465 390.17	330-101465 441.84	340-101465 558.14	350-101465 914.03



Fabricated Fittings Product
PVC Class 63, 100, 125, 160 & 200 IPS Fabricated Fittings & Molded Class 125

	Size	CLASS 63	CLASS 100	CLASS 125	CLASS 160	CLASS 200
		Prod Code: 340 Part Number MSRP	Prod Code: 350 Part Number MSRP	Prod Code: 360 Part Number MSRP	Prod Code: 370 Part Number MSRP	Prod Code: 380 Part Number MSRP

Repair Coupling (Gasket x Gasket)

	4	---	3228-040 82.56	3328-040 88.36	3428-040 116.68	3528-040 141.55
	6	---	3228-060 115.65	3328-060 119.59	3428-060 149.23	3528-060 172.85
	8	---	3228-080 176.47	3328-080 183.53	3428-080 213.64	3528-080 232.85
	10	---	3228-100 251.96	3328-100 273.24	3428-100 336.44	3528-100 373.49
	12	---	3228-120 337.55	3328-120 365.68	3428-120 438.06	3528-120 521.64
	14	---	3228-140 484.78	3328-140 510.07	3428-140 553.64	---
	16	---	3228-160 639.20	3328-160 726.13	3428-160 787.60	---

Cross (Socket x Socket x Socket x Socket)

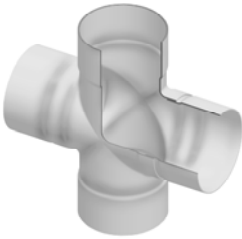
	4X2	---	320-103280 67.95	330-103280 101.95	---	---
	4X3	---	320-103281 74.72	330-103281 105.35	---	---
	6	310-103286 112.80	320-103286 195.75	330-103286 221.59	340-103286 456.98	350-103286 501.74
	6X2	310-103283 77.49	320-103283 84.28	330-103283 112.80	340-103283 334.97	350-103283 337.68
	6X3	310-103284 88.36	320-103284 106.01	330-103284 141.42	340-103284 348.51	350-103284 355.27
	6X4	310-103285 95.16	320-103285 119.59	330-103285 161.72	340-103285 375.63	350-103285 402.78
	8	310-103291 146.77	320-103291 254.25	330-103291 308.60	340-103291 688.88	350-103291 736.38
	8X2	310-103287 99.21	320-103287 126.40	330-103287 141.42	340-103287 429.91	350-103287 436.47
	8X3	310-103288 106.01	320-103288 141.42	330-103288 154.93	340-103288 443.42	350-103288 490.91
	8X4	310-103289 120.98	320-103289 161.72	330-103289 186.19	340-103289 474.61	350-103289 517.99
	8X6	310-103290 133.20	320-103290 197.13	330-103290 233.82	340-103290 553.31	350-103290 593.97
	10	310-103297 237.91	320-103297 379.25	330-103297 532.89	340-103297 1139.13	350-103297 1214.67
	10X2	310-103292 120.98	320-103292 175.32	330-103292 207.99	340-103292 665.84	350-103292 722.85
	10X3	310-103293 133.20	320-103293 198.46	330-103293 250.11	340-103293 675.33	350-103293 740.40
	10X4	310-103294 146.77	320-103294 221.59	330-103294 282.76	340-103294 733.62	350-103294 777.04
	10X6	310-103295 163.12	320-103295 246.05	330-103295 328.99	340-103295 819.08	350-103295 866.56
	10X8	310-103296 186.19	320-103296 301.80	330-103296 409.21	340-103296 920.81	350-103296 985.88
	12	310-103304 371.13	320-103304 584.55	330-103304 860.54	340-103304 1687.00	350-103304 1950.07
	12X2	310-103298 172.66	320-103298 231.11	330-103298 337.12	340-103298 846.25	350-103298 852.97
	12X3	310-103299 188.91	320-103299 266.44	330-103299 350.74	340-103299 891.13	350-103299 937.24

Fabricated Fittings Product
PVC Class 63, 100, 125, 160 & 200 IPS Fabricated Fittings & Molded Class 125



Size	CLASS 63	CLASS 100	CLASS 125	CLASS 160	CLASS 200
	Prod Code: 340 Part Number MSRP	Prod Code: 350 Part Number MSRP	Prod Code: 360 Part Number MSRP	Prod Code: 370 Part Number MSRP	Prod Code: 380 Part Number MSRP


Cross (Socket x Socket x Socket x Socket) (continued)

	12X4	310-103300 201.18	320-103300 318.60	330-103300 392.86	340-103300 1006.19	350-103300 1022.51
	12X6	310-103301 212.03	320-103301 331.69	330-103301 451.34	340-103301 1105.21	350-103301 1125.57
	12X8	310-103302 244.68	320-103302 387.42	330-103302 530.20	340-103302 1234.03	350-103302 1261.22
	12X10	310-103303 292.23	320-103303 481.21	330-103303 672.93	340-103303 1414.37	350-103303 1465.93
	15	310-103321 ¹ 630.79	---	---	---	---
	15X2	310-103313 ² 271.86	---	---	---	---
	15X3	310-103314 ² 305.89	---	---	---	---
	15X4	310-103315 ² 337.12	---	---	---	---
	15X6	310-103316 ² 386.09	---	---	---	---
	15X8	310-103317 ² 421.42	---	---	---	---
	15X10	310-103318 ² 456.76	---	---	---	---
	15X12	310-103319 ² 505.74	---	---	---	---

¹ 15" PIP O.D.

² 15" PIP O.D. x IPS

Cross (Gasket x Gasket x Gasket x Gasket)

	4	---	320-103997 237.91	330-103997 258.31	340-103997 322.89	350-103997 348.73
	6	---	320-104001 277.29	330-104001 347.99	340-104001 580.38	350-104001 736.38
	6X4	---	320-104000 251.51	330-104000 319.45	340-104000 456.98	350-104000 573.60
	8	---	320-104006 454.07	330-104006 519.33	340-104006 900.46	350-104006 1118.81
	8X4	---	320-104004 339.85	330-104004 394.22	340-104004 623.75	350-104004 749.92
	8X6	---	320-104005 407.80	330-104005 448.58	340-104005 748.57	350-104005 873.32
	10	---	320-104012 682.47	330-104012 902.74	340-104012 1499.84	350-104012 1670.71
	10X4	---	320-104009 475.80	330-104009 577.77	340-104009 810.93	350-104009 968.27
	10X6	---	320-104010 543.76	330-104010 598.16	340-104010 992.66	350-104010 1105.21
	10X8	---	320-104011 611.78	330-104011 781.71	340-104011 1220.51	350-104011 1261.22
	12	---	320-104019 925.80	330-104019 1267.08	340-104019 2089.74	350-104019 2352.82
	12X4	---	320-104015 679.74	330-104015 747.73	340-104015 1189.26	350-104015 1364.22
	12X6	---	320-104016 747.73	330-104016 788.48	340-104016 1363.64	350-104016 1455.09
	12X8	---	320-104017 815.67	330-104017 924.45	340-104017 1539.13	350-104017 1573.08

Made in the U.S.A.


Suitable for Oil-Free air handling to 25 psi, not for distribution of compressed air or gas



Fabricated Fittings Product
PVC Class 63, 100, 125, 160 & 200 IPS Fabricated Fittings & Molded Class 125

Size	CLASS 63 Prod Code: 340	CLASS 100 Prod Code: 350	CLASS 125 Prod Code: 360	CLASS 160 Prod Code: 370	CLASS 200 Prod Code: 380
	Part Number MSRP	Part Number MSRP	Part Number MSRP	Part Number MSRP	Part Number MSRP

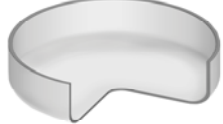
Cross (Gasket x Gasket x Gasket x Gasket) (continued)

	12X10	---	320-104018 870.08	330-104018 1114.77	340-104018 1803.63	350-104018 1841.60
--	--------------	-----	-----------------------------	------------------------------	------------------------------	------------------------------

Surface Reducer (Socket)

	6X2	310-102013 38.05	---	330-102013 54.35	---	---
	6X3	310-102015 38.05	---	330-102015 54.35	---	---
	6X4	310-102016 38.05	---	---	---	---
	8X2	310-102018 51.59	---	330-102018 108.77	---	---
	8X3	310-102020 51.59	---	330-102020 108.77	---	---
	8X4	310-102021 51.59	---	330-102021 108.77	---	---
	8X6	310-102022 51.59	---	330-102022 176.75	---	---
	10X2	310-102024 82.89	---	330-102024 169.93	---	---
	10X3	310-102026 82.89	---	330-102026 169.93	---	---
	10X4	310-102027 82.89	---	330-102027 169.93	---	---
	10X6	310-102028 82.89	---	330-102028 169.93	---	---
	10X8	310-102029 82.89	---	330-102029 169.93	---	---
	12X2	310-102031 101.95	---	330-102031 305.89	---	---
	12X3	310-102033 101.95	---	330-102033 305.89	---	---
	12X4	310-102034 101.95	---	330-102034 305.89	---	---
	12X6	310-102035 101.95	---	330-102035 305.89	---	---
	12X8	310-102036 101.95	---	330-102036 305.89	---	---
12X10	310-102037 101.95	---	330-102037 305.89	---	---	

Cap (Socket)

	6	310-107540 25.84	---	330-107540 50.28	---	---
	8	310-107541 47.56	---	330-107541 65.23	---	---
	10	310-107542 81.56	---	330-107542 104.67	---	---

Fabricated Fittings Product
PVC Class 63, 100, 125, 160 & 200 IPS Fabricated Fittings & Molded Class 125




	Size	CLASS 63	CLASS 100	CLASS 125	CLASS 160	CLASS 200
		Prod Code: 340 Part Number MSRP	Prod Code: 350 Part Number MSRP	Prod Code: 360 Part Number MSRP	Prod Code: 370 Part Number MSRP	Prod Code: 380 Part Number MSRP

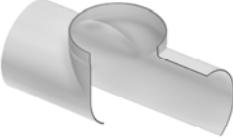
Cap (Socket) (continued)

	12	310-107543 99.82	---	330-107543 201.18	---	---
---	----	---------------------	-----	----------------------	-----	-----

Cap (Gasket)

	4	---	---	330-107565 91.73	---	---
	6	---	---	330-107566 130.47	---	---
	8	---	---	330-107567 221.59	---	---
	10	---	---	330-107568 357.49	---	---
	12	---	---	330-107569 539.71	---	---

Saddle (Socket)

	6	310-101937 36.71	---	---	---	---
	6X2	310-101789 28.51	---	330-101789 81.56	---	---
	6X3	310-101797 31.22	---	330-101797 95.16	---	---
	6X4	310-101804 35.28	---	330-101804 108.77	---	---
	8	310-101938 54.35	---	---	---	---
	8X2	310-101790 28.51	---	330-101790 81.56	---	---
	8X3	310-101798 31.22	---	330-101798 95.16	---	---
	8X4	310-101805 35.28	---	330-101805 108.77	---	---
	8X6	310-101811 36.71	---	330-101811 122.36	---	---
	10	310-101939 84.28	---	---	---	---
	10X2	310-101791 28.51	---	330-101791 81.56	---	---
	10X3	310-101799 31.22	---	330-101799 95.16	---	---
	10X4	310-101806 35.28	---	330-101806 108.77	---	---
	10X6	310-101812 36.71	---	330-101812 122.36	---	---
	10X8	310-101817 54.35	---	330-101817 135.93	---	---
	12	310-101940 126.11	---	---	---	---
	12X2	310-101792 38.24	---	330-101792 81.56	---	---
	12X3	310-101800 31.22	---	330-101800 95.16	---	---
12X4	310-101807 35.28	---	330-101807 108.77	---	---	

Made in the U.S.A.

Suitable for Oil-Free air handling to 25 psi, not for distribution of compressed air or gas

Effective 02/01/2020 See MSRP-1 Sheet or Check Spears® On-line Catalog @ www.spearsmfg.com for Pricing



Fabricated Fittings Product
PVC Class 63, 100, 125, 160 & 200 IPS Fabricated Fittings & Molded Class 125

	Size	CLASS 63	CLASS 100	CLASS 125	CLASS 160	CLASS 200
		Prod Code: 340 Part Number MSRP	Prod Code: 350 Part Number MSRP	Prod Code: 360 Part Number MSRP	Prod Code: 370 Part Number MSRP	Prod Code: 380 Part Number MSRP

Saddle (Socket) (continued)

	12X6	310-101813 36.71	---	330-101813 122.36	---	---
	12X8	310-101818 54.35	---	330-101818 135.93	---	---
	12X10	310-101822 84.28	---	330-101822 149.53	---	---

Stub Saddle (Socket)

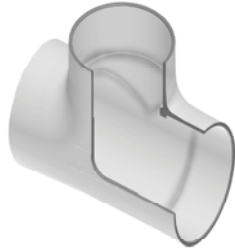
	6	310-101949 59.78	---	---	---	---
	6X2	310-101884 39.38	---	330-101884 72.01	---	---
	6X3	310-101892 46.24	---	330-101892 78.81	---	---
	6X4	310-101899 53.02	---	330-101899 88.36	---	---
	8	310-101950 81.56	---	---	---	---
	8X2	310-101885 39.38	---	330-101885 72.01	---	---
	8X3	310-101893 46.24	---	330-101893 78.81	---	---
	8X4	310-101900 53.02	---	330-101900 88.36	---	---
	8X6	310-101906 59.78	---	330-101906 107.36	---	---
	10	310-101951 112.80	---	---	---	---
	10X2	310-101886 39.38	---	330-101886 72.01	---	---
	10X3	310-101894 46.24	---	330-101894 78.81	---	---
	10X4	310-101901 53.02	---	330-101901 88.36	---	---
	10X6	310-101907 59.78	---	330-101907 107.36	---	---
	10X8	310-101912 81.56	---	330-101912 123.66	---	---
	12	310-101952 141.42	---	---	---	---
	12X2	310-101887 39.38	---	330-101887 72.01	---	---
	12X3	310-101895 46.24	---	330-101895 78.81	---	---
	12X4	310-101902 53.02	---	330-101902 101.98	---	---
	12X6	310-101908 59.78	---	330-101908 107.36	---	---
12X8	310-101913 81.56	---	330-101913 123.66	---	---	
12X10	310-101917 112.80	---	330-101917 130.47	---	---	

Fabricated Fittings Product
PVC Class 63, 100, 125, 160 & 200 IPS Fabricated Fittings & Molded Class 125



Class 125 Molded Fittings

Part Number	Size	Std Pk	Mstr Ctn	Prod Code	MSRP
-------------	------	--------	----------	-----------	------



Class 125 Molded Tee

12501-100	10	1	0	361	441.71
12501-120	12	1	0	361	662.52



Class 125 Molded 90° Elbow

12506-100	10	1	0	361	370.49
12506-120	12	1	0	361	566.66



Class 125 Molded 45° Elbow

12517-100	10	1	0	361	236.82
12517-120	12	1	0	361	347.25



Class 125 Molded Coupling

12529-100	10	1	0	361	114.76
12529-120	12	1	0	361	184.57



Class 125 Molded Reducer Coupling

12529-626	10X6	1	0	361	191.33
12529-628	10X8	1	0	361	119.16

Part Number	Size	Std Pk	Mstr Ctn	Prod Code	MSRP
-------------	------	--------	----------	-----------	------

Class 125 Molded Reducer Coupling (continued)

12529-668	12X8	1	0	361	284.68
12529-670	12X10	1	0	361	226.65



Class 125 Molded Reducer Bushing

12537-626	10X6	3	0	361	181.64
12537-628	10X8	3	0	361	181.64
12537-668	12X8	2	0	361	326.96
12537-670	12X10	2	0	361	324.98