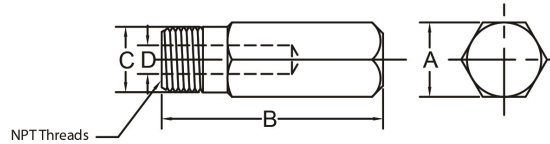


Bull Plugs

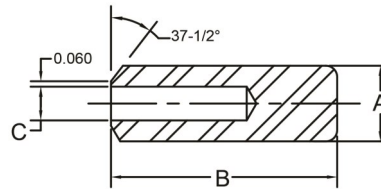
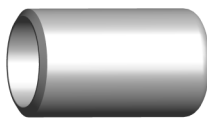
ASTM A234, MSS SP-95, ASME B1.20.1



Hex, Threaded

Pipe Size	A	B	C	D			Wt. Ea.		
				XH	160	XXH	XH	160	XXH
1/4	0.625	2.000	0.540	0.581	0.218	0.156	0.11	0.40	0.40
3/8	0.875	2.250	0.675	0.406	0.328	0.218	0.14	-	-
1/2	0.875	2.500	0.840	0.531	0.437	0.250	0.33	0.50	0.50
3/4	1.062	2.750	1.050	0.718	0.609	0.421	0.50	0.75	0.75
1	1.375	3.000	1.315	0.937	0.781	0.593	0.67	1.00	1.00

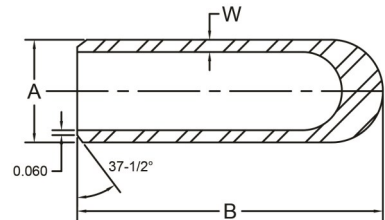
Electro-Zinc Plated



Hollow, Welding Bevel

ASTM A234, MSS SP-95, ASME B16.25

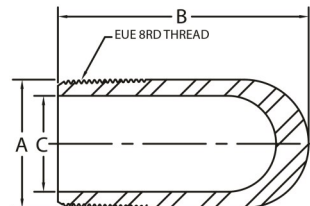
Pipe Size	A	B	C				Wt. Ea.			
			STD	XH	160	XXH	STD	XH	160	XXH
1	1.312	3.000	1.031	0.937	0.781	0.578	-	0.67	1.38	1.00
1-1/4	1.688	3.250	1.343	1.250	1.140	0.875	-	1.00	2.25	1.50
1-1/2	2.000	3.500	1.593	1.484	1.312	1.062	-	1.17	2.00	2.00
2	2.375	4.000	2.000	1.937	1.671	1.484	2.25	2.74	3.50	3.50



Hollow, Welding Bevel

ASTM A234, MSS SP-95, ASME B16.25

Pipe Size	A	B	W				Wt. Ea.			
			STD	XH	160	XXH	STD	XH	160	XXH
2-1/2	2.875	5.000	0.203	0.276	0.375	0.552	3.00	3.50	-	8.00
3	3.500	6.000	0.216	0.300	0.438	0.600	4.50	6.00	-	11.00
4	4.500	7.000	0.237	0.337	0.531	0.674	7.50	10.00	-	18.00



Hollow, API 8 Round Threads

API 5B, API J55 or N80, API EUE 8RD

Pipe Size	A	B	C			Wt. Ea.		
			STD	XH	XXH	STD	XH	XXH
2	2.594	5.000	1.995	1.875	1.500	3.50	4.00	9.00
2-1/2	3.093	5.500	2.441	2.312	1.750	4.25	6.00	14.00
3	3.750	6.500	2.992	2.875	2.250	10.00	15.00	25.00
3-1/2	4.250	7.000	3.476	3.375	2.750	-	-	-

Electro-Zinc Plated