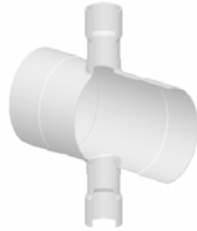




**Fabricated Fittings Product**  
**PVC Low Head PIP Fabricated Fittings, Risers & Accessories**

**Crosses**

Part Number	Size	Std Pk	Mstr Ctn	Prod Code	MSRP
<b>Cross (continued)</b>					
<b>Socket x Socket x Socket x Socket</b>					
280-103297	10	1	0	300	167.43
280-103304	12	1	0	300	233.23
280-103321	15	1	0	300	445.06
280-103342	18	1	0	300	714.06
280-103354	20	1	0	300	940.21



Cross- Reducer

**Socket X Socket X Socket X Socket**

280-103283	6X2	1	0	300	71.54
280-103284	6X3	1	0	300	71.54
280-103285	6X4	1	4	300	78.65
280-103287	8X2	1	0	300	100.14
280-103288	8X3	1	0	300	100.14
280-103289	8X4	1	0	300	107.31
280-103290	8X6	1	0	300	112.99
280-103300	12X4	1	0	300	140.20
280-103292	10X2	1	2	300	100.14
280-103293	10X3	1	0	300	103.75
280-103294	10X4	1	0	300	107.31
280-103295	10X6	1	0	300	120.20
280-103296	10X8	1	0	300	137.32
280-103298	12X2	1	0	300	135.23
280-103299	12X3	1	0	300	136.61
280-103301	12X6	1	0	300	151.66
280-103302	12X8	1	0	300	164.57
280-103303	12X10	1	0	300	198.87
280-103313	15X2	1	0	300	198.87
280-103314	15X3	1	0	300	203.19
280-103315	15X4	1	0	300	213.23
280-103316	15X6	1	0	300	226.08
280-103317	15X8	1	0	300	243.25
280-103318	15X10	1	0	300	287.64
280-103319	15X12	1	0	300	346.32
280-103332	18X2	1	0	300	386.36
280-103333	18X3	1	0	300	389.97
280-103334	18X4	1	0	300	393.55
280-103335	18X6	1	0	300	403.55
280-103336	18X8	1	0	300	414.98
280-103338	18X12	1	0	300	502.34
280-103340	18X15	1	0	300	572.44
280-103343	20X2	1	0	300	542.33
280-103344	20X3	1	0	300	546.62
280-103345	20X4	1	0	300	550.96
280-103337	18X10	1	0	300	472.19
280-103346	20X6	1	0	300	563.81
280-103347	20X8	1	0	300	578.14

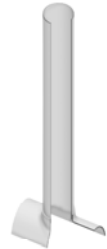
Part Number	Size	Std Pk	Mstr Ctn	Prod Code	MSRP
-------------	------	--------	----------	-----------	------

**Cross- Reducer (continued)**

**Socket X Socket X Socket X Socket**

280-103348	20X10	1	0	300	619.60
280-103349	20X12	1	0	300	666.86
280-103351	20X15	1	0	300	698.33
280-103353	20X18	1	0	300	819.98

**Riser Extensions**



Orchard Riser

**Saddle x Riser**

2880-04030	4X4	1	0	301	41.43
2880-53230	6X4	1	35	301	41.43
2880-06030	6X6	1	25	301	71.54
2880-58230	8X4	1	25	301	41.43
2880-58530	8X6	1	25	301	54.34
2880-08030	8X8	1	12	301	100.18
2880-62430	10X4	1	30	301	42.92
2880-62630	10X6	1	20	301	54.34
2880-62830	10X8	1	16	301	74.40
2880-10030	10X10	1	6	301	143.06
2880-66430	12X4	1	25	301	44.34
2880-66630	12X6	1	20	301	54.34
2880-66830	12X8	1	12	301	74.40
2880-67030	12X10	1	9	301	103.00
2880-12030	12X12	1	6	301	200.33
2880-72430	15X4	1	25	301	47.19
2880-72630	15X6	1	25	301	62.92
2880-72830	15X8	1	12	301	84.43
2880-73030	15X10	1	9	301	117.32
2880-73230	15X12	1	6	301	161.68
2880-15030	15X15	1	4	301	334.83
2880-78430	18X4	1	25	301	51.56
2880-78630	18X6	1	25	301	61.19
2880-78830	18X8	1	12	301	88.75
2880-79030	18X10	1	9	301	118.76
2880-79230	18X12	1	6	301	183.13
2880-79530	18X15	1	4	301	264.72
2880-18030	18X18	1	3	301	502.25
2880-81430	20X4	1	0	301	54.37
2880-81630	20X6	1	12	301	71.57
2880-81830	20X8	1	12	301	107.31
2880-82030	20X10	1	6	301	167.44
2880-82230	20X12	1	5	301	203.19
2880-82530	20X15	1	4	301	299.13
2880-82830	20X18	1	0	301	367.77
2880-20030	20X20	1	2	301	648.27

**Fabricated Fittings Product**  
**PVC Low Head PIP Fabricated Fittings, Risers & Accessories**



**Riser Extensions**

Part Number	Size	Std Pk	Mstr Ctn	Prod Code	MSRP
-------------	------	--------	----------	-----------	------



Erosion Pot Riser

Saddle x Riser x Pot

2881-53232	6X4X8	1	16	301	79.31
2881-06032	6X6X10	1	0	301	94.89
2881-58232	8X4X8	1	20	301	79.31
2881-58532	8X6X10	1	0	301	94.89
2881-08032	8X8X12	1	9	301	134.19
2881-62432	10X4X8	1	16	301	79.31
2881-62632	10X6X10	1	0	301	94.89
2881-62832	10X8X12	1	12	301	134.19
2881-10032	10X10X15	1	0	301	184.37
2881-66432	12X4X8	1	20	301	79.31
2881-66632	12X6X10	1	12	301	94.89
2881-66832	12X8X12	1	12	301	134.19
2881-67032	12X10X15	1	0	301	184.37
2881-12032	12X12X18	1	0	301	244.04
2881-72432	15X4X8	1	0	301	79.31
2881-72632	15X6X10	1	12	301	94.89
2881-72832	15X8X12	1	0	301	134.19
2881-73032	15X10X15	1	0	301	184.37
2881-73232	15X12X18	1	0	301	244.04
2881-15032	15X15X20	1	0	301	359.27
2881-78432	18X4X8	1	0	301	79.31
2881-78632	18X6X10	1	0	301	94.89
2881-78832	18X8X12	1	0	301	134.19
2881-79032	18X10X15	1	0	301	184.37
2881-79232	18X12X18	1	0	301	244.04
2881-79532	18X15X20	1	0	301	359.27
2881-81432	20X4X8	1	0	301	79.31
2881-81632	20X6X10	1	0	301	94.89
2881-81832	20X8X12	1	0	301	134.19
2881-82032	20X10X15	1	0	301	184.37
2881-82232	20X12X18	1	0	301	244.04
2881-82532	20X15X20	1	0	301	359.27



Mechanical Vent Assembly

Saddle x Riser/Vent

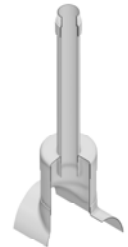
2882-420	4X2	1	10	301	78.65
2882-422	4X3	1	0	301	121.59
2882-528	6X2	1	10	301	78.65
2882-530	6X3	1	10	301	121.59

Part Number	Size	Std Pk	Mstr Ctn	Prod Code	MSRP
-------------	------	--------	----------	-----------	------

**Mechanical Vent Assembly (continued)**

**Saddle x Riser/Vent**

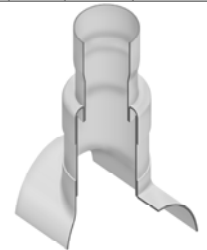
2882-532	6X4	1	5	301	168.87
2882-578	8X2	1	8	301	78.65
2882-580	8X3	1	4	301	121.59
2882-582	8X4	1	8	301	168.87
2882-621	10X2	1	10	301	78.65
2882-623	10X3	1	5	301	121.59
2882-624	10X4	1	3	301	168.87
2882-661	12X2	1	10	301	78.65
2882-663	12X3	1	5	301	121.59
2882-664	12X4	1	4	301	168.87
2882-721	15X2	1	0	301	78.66
2882-723	15X3	1	6	301	121.59
2882-724	15X4	1	4	301	168.87
2882-781	18X2	1	0	301	78.66
2882-783	18X3	1	0	301	121.59
2882-784	18X4	1	4	301	168.87
2882-811	20X2	1	0	301	78.66
2882-813	20X3	1	0	301	121.59
2882-814	20X4	1	5	301	168.87



Mechanical Vent Riser

Saddle x Riser/Vent x Chamber

2883-52842	6X2X4	1	0	301	91.58
2883-57842	8X2X6	1	0	301	98.75
2883-58042	8X3X6	1	25	301	124.46
2883-62142	10X2X8	1	12	301	120.20
2883-62342	10X3X8	1	8	301	143.06
2883-62442	10X4X8	1	12	301	168.87
2883-66142	12X2X10	1	6	301	154.52
2883-66342	12X3X10	1	16	301	175.98
2883-66442	12X4X10	1	12	301	200.33
2883-72442	15X4X12	1	6	301	260.41
2883-78442	18X4X15	1	4	301	336.26
2883-81442	20X4X18	1	0	301	473.67



Vent Base

Saddle x Riser x Outlet

2888-532020	6X4X2	1	2	301	59.41
2888-585030	8X6X3	1	0	301	183.81
2888-585040	8X6X4	1	4	301	93.00
2888-628060	10X8X6	1	0	301	143.06
2888-670060	12X10X6	1	0	301	151.66



**Fabricated Fittings Product**  
**PVC Low Head PIP Fabricated Fittings, Risers & Accessories**

**Riser Extensions**

Part Number	Size	Std Pk	Mstr Ctn	Prod Code	MSRP
-------------	------	--------	----------	-----------	------

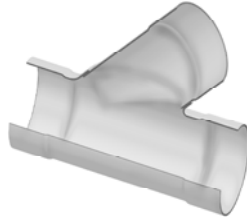
Vent Base (continued)

**Saddle x Riser x Outlet**

2888-732080	<b>15X12X8</b>	1	0	301	227.51
2888-795080	<b>18X15X8</b>	1	0	301	314.85
2888-828080	<b>20X18X8</b>	1	0	301	569.59

**Wyes**

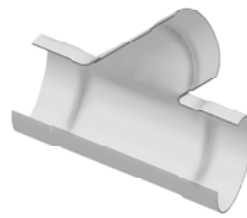
Wye



**Socket x Socket x Socket**

2875-060	<b>6</b>	1	2	300	100.43
2875-080	<b>8</b>	1	0	300	132.83
2875-100	<b>10</b>	1	0	300	172.82
2875-120	<b>12</b>	1	0	300	240.77
2875-150	<b>15</b>	1	0	300	372.47
2875-183	<b>18</b>	1	0	300	895.63
2875-200	<b>20</b>	1	0	300	1201.06

Wye - Reducing

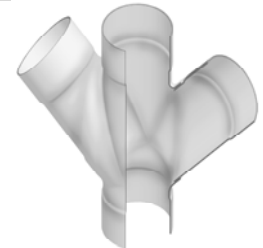


**Socket x Socket x Socket**

2875-532	<b>6X4</b>	1	4	300	78.32
2875-585	<b>8X6</b>	1	0	300	115.86
2875-626	<b>10X6</b>	1	0	300	148.18
2875-628	<b>10X8</b>	1	0	300	156.29
2875-666	<b>12X6</b>	1	0	300	162.85
2875-668	<b>12X8</b>	1	0	300	186.95
2875-670	<b>12X10</b>	1	0	300	199.71
2875-726	<b>15X6</b>	1	0	300	219.53
2875-728	<b>15X8</b>	1	0	300	237.93
2875-730	<b>15X10</b>	1	0	300	260.58
2875-732	<b>15X12</b>	1	0	300	286.08
2875-786	<b>18X6</b>	1	0	300	354.09
2875-788	<b>18X8</b>	1	0	300	359.69
2875-790	<b>18X10</b>	1	0	300	393.06
2875-792	<b>18X12</b>	1	0	300	433.49
2875-795	<b>18X15</b>	1	0	300	473.94
2875-816	<b>20X6</b>	1	0	300	442.59
2875-818	<b>20X8</b>	1	0	300	449.60
2875-820	<b>20X10</b>	1	0	300	491.32
2875-822	<b>20X12</b>	1	0	300	541.86
2875-825	<b>20X15</b>	1	0	300	592.43
2875-828	<b>20X18</b>	1	0	300	1042.35

Part Number	Size	Std Pk	Mstr Ctn	Prod Code	MSRP
-------------	------	--------	----------	-----------	------

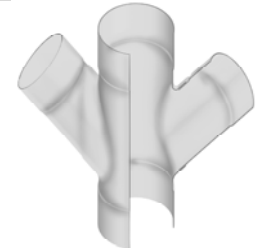
Double Wye



**Socket x Socket x Socket x Socket**

2876-060	<b>6</b>	1	2	300	157.73
2876-080	<b>8</b>	1	0	300	179.67
2876-100	<b>10</b>	1	0	300	300.87
2876-120	<b>12</b>	1	0	300	359.35
2876-150	<b>15</b>	1	0	300	555.94
2876-183	<b>18</b>	1	0	300	1507.37
2876-200	<b>20</b>	1	0	300	2142.87

Double Wye - Reducing



**Socket x Socket x Socket x Socket**

2876-585	<b>8X6</b>	1	0	300	126.85
2876-626	<b>10X6</b>	1	0	300	179.67
2876-628	<b>10X8</b>	1	0	300	198.73
2876-666	<b>12X6</b>	1	0	300	243.06
2876-668	<b>12X8</b>	1	0	300	279.02
2876-670	<b>12X10</b>	1	0	300	333.59
2876-726	<b>15X6</b>	1	0	300	327.63
2876-728	<b>15X8</b>	1	0	300	355.09
2876-730	<b>15X10</b>	1	0	300	388.94
2876-732	<b>15X12</b>	1	0	300	527.36
2876-786	<b>18X6</b>	1	0	300	528.52
2876-788	<b>18X8</b>	1	0	300	536.85
2876-790	<b>18X10</b>	1	0	300	586.65
2876-792	<b>18X12</b>	1	0	300	647.02
2876-795	<b>18X15</b>	1	0	300	707.37
2876-816	<b>20X6</b>	1	0	300	729.97
2876-818	<b>20X8</b>	1	0	300	749.01
2876-820	<b>20X10</b>	1	0	300	766.73
2876-822	<b>20X12</b>	1	0	300	808.75
2876-825	<b>20X15</b>	1	0	300	884.22
2876-828	<b>20X18</b>	1	0	300	1635.23