

DIA. Inches	Gallons Per Inch	Head Depth	Cone Depth	Cone Capacity
24	1.93	4	12	8
30	3.14	5	15	15
36	4.19	6	15	16
42	6.06	7	21	41
48	7.58	8	21	43
54	9.90	9	27	89
60	11.80	10	27	85
66	14.80	11	33	163
72	17.46	12	33	156
84	24.02	14	39	276
90	27.53	15	45	413
96	31.66	16	45	422
108	38.72	18	51	586
120	49.49	20	58	863
132	59.22	22	66	1303
138	64.82	23	65	1271
144	72.39	24	70	1522
156	82.68	26	78	2151
168	93.08	28	82	2496

**General Notes:**

1. Diameters smaller than 72" are Contact Molded per ASTM D-4097.
2. Diameters 72" and larger are Filament Wound per ASTM D-3299.
3. Carbon steel primed pipe legs with floor pads.
4. Heavy powder coated carbon steel lifting lugs, as required for handling.
5. Standard cone angle is 90° at the apex (Included Angle).

**OPTIONAL FEATURES**

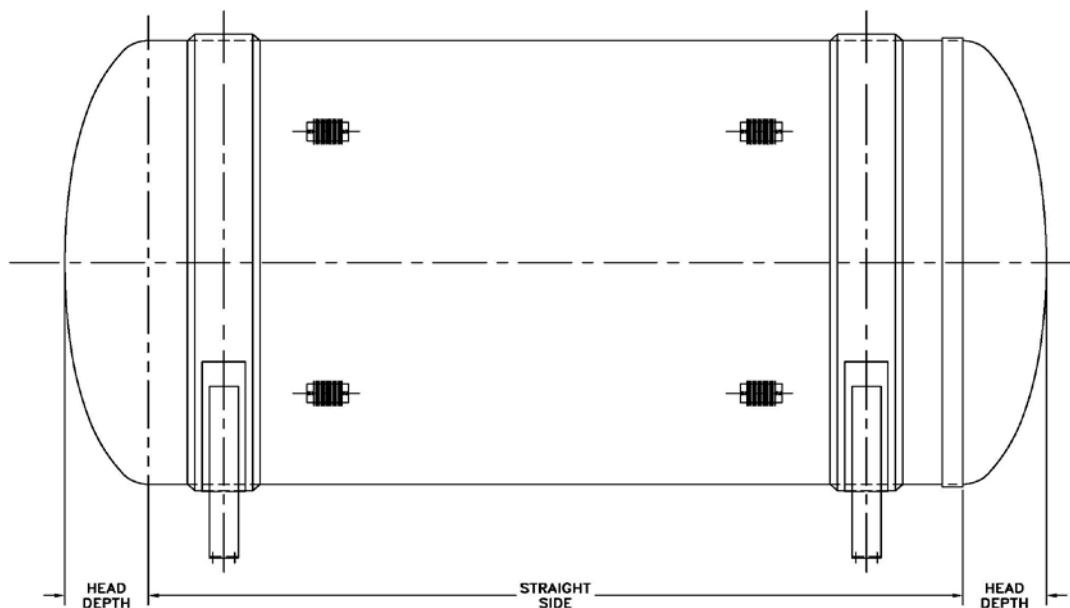
- FRP Skirt Support
- Integral FLAT Top Head
- Flat Cover for Open Top (1 pc. / 2 pc. / 3 pc.)
- 30°, 45° & 60° Cone Angles



**Corrosion Resistant Equipment CO., Inc.**  
 24445 S. Klemme Road ■ Crete, IL ■ 60417  
 Phone (708) 367-1111 ■ Fax (708) 367-1160  
[www.crecoinc.com](http://www.crecoinc.com)

**CAPACITIES (U.S. Gallons)**

Tank Nominal DIAMETER (Inches)	ONE Section				STRAIGHT SIDE LENGTH (Inches)								TWO Section			
	132	144	156	168	180	192	204	216	228	240	252	264	276	288	312	
24	263															
30	426	464	503	542	581											
36	560	612	664	717												
42	832	906	981	1055	1130											
48	1033	1126	1219	1312												
54	1397	1516	1635	1754	1873	1992	2111	2230	2349	2468	2587	2706	2825	2944	3182	
60	1687	1836	1986	2136	2287	2439	2591	2743								
66	2117	2295	2473	2651	2828	3006	3184	3362	3539	3717	3895	4072	4250	4428	4783	
72	2436	2651	2866	3083	3301	3520	3740	3962	4185	4409	4504	4717	4931	5146	5577	
84	3437	3666	3955	4245	4536	4828	5120	5414	5709	6005	6302	6599				
90	4048	4378	4709	5039	5370	5700	6031	6361	6692	7022	7353	7683	8014	8344	9005	
96	4532	4918	5305	5694	6086	6479	6874	7113	7494	7876	8259	8643	9028	9414	10189	
108	5628	6098	6569	7042	7517	7994	8472	8804	9270	9736	10203	10671	11140	11610	12552	
120	7304	7904	8507	9112	9720	10331	10944	11358	11953	12549	13146	13745	14345	14946	16151	
132	9122	9833	10544	11255	11966	12677	13388	14099	14810	15520	16231	16942	17653	18364	19786	
138	9754	10540	11327	12117	12909	13704	14333	15112	15892	16673	17455	18238	19023	19809	21384	
144	10941	11817	12697	13580	14466	15356	16249	17146	17743	18614	19486	20360	21235	22112	23872	
156	13072	14065	15058	16051	17044	18037	19030	20023	21016	22009	23002	23994	24987	25980	27966	
168	14743	15876	17011	17997	19116	20236	21358	22482	23607	24733	25862	26991	28123	29256	31526	



### C-CCH

#### CAPACITIES (U.S. Gallons)

Tank Nominal DIAMETER (Inches)	ONE Section				STRAIGHT SIDE LENGTH (Inches)								TWO Section			
	24	30	36	42	48	54	60	66	72	78	84	90	96	108	120	
	24	55	66	78	90	101	113	125	136	148	159	171	182	194	217	241
30	91	110	129	147	166	185	204	223	242	262	281	301	315	353	391	
36	123	147	172	197	222	247	273	299	325	351	377	404	418	468	519	
42	191	227	263	299	336	372	409	445	482	520	557	594	622	695	768	
48	245	290	335	380	426	472	517	564	610	657	703	751	783	875	966	
54	347	407	466	526	585	645	704	764	823	883	942	1002	1061	1180	1299	
60	429	502	574	648	721	795	869	943	1017	1092	1167	1243	1319	1471	1624	
66	556	645	734	823	911	1000	1089	1178	1267	1356	1445	1533	1622	1800	1978	
72	644	746	848	950	1053	1156	1259	1362	1466	1570	1675	1779	1884	2095	2307	
84	946	1086	1227	1369	1511	1653	1796	1940	2084	2228	2373	2519	2665	2958	3253	
90	1171	1337	1502	1667	1832	1998	2163	2328	2493	2659	2824	2989	3154	3485	3815	
96	1315	1498	1682	1867	2052	2238	2424	2611	2798	2985	3173	3362	3551	3930	4312	
108	1708	1934	2161	2388	2616	2844	3072	3301	3531	3761	3991	4222	4453	4917	5383	
120	2306	2594	2884	3174	3464	3756	4047	4340	4633	4927	5221	5516	5811	6404	7000	
132	3033	3389	3744	4100	4455	4811	5166	5521	5877	6232	6588	6943	7299	8010	8720	
138	3283	3665	4048	4431	4814	5198	5583	5969	6354	6741	7128	7516	7904	8682	9463	
144	3732	4155	4578	5003	5428	5854	6281	6709	7137	7567	7997	8428	8860	9726	10596	
156	4647	5144	5640	6137	6633	7130	7626	8122	8619	9115	9612	10108	10605	11598	12591	
168	5270	5821	6374	6927	7481	8036	8591	9148	9705	10262	10821	11381	11941	13064	14189	