

Valves Product Sewer Disconnect



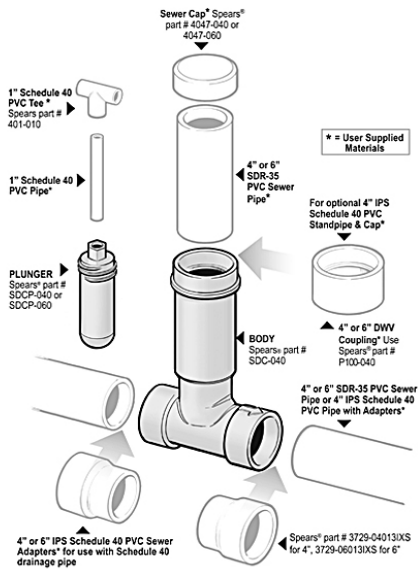
Spears® Sewer Disconnect functions as both cleanout and disconnect device, plus helps prevent sewage backup during hurricanes and floods. Complete unit consists of body and plunger (sold separately - both parts are required for proper use). The plunger can be screwed into the body to block solids waste flow. The plunger should be removed from the body and stored when not in use to prevent accidental closing (i.e., from ground vibration, etc.).



- Connects directly to 4" or 6" SDR-35 (or any ASTM D3034/D2729) PVC Sewer Pipe.
- Easily adapted to 4" or 6" Schedule 40 PVC Drainage Pipe with addition of IPS x Sewer Adapters, Socket x Spigot, Spears® part no. 3729-04013IXS for 4" or 3729-06013IXS for 6".
- User-supplied standpipe can be installed to grade using PVC Sewer Pipe connected to the body branch socket and a Sewer Cap to close off (Spears® part no. 4047-040 for 4" or 4047-060 for 6"). Optionally, user-supplied Schedule 40 Pipe can be used for standpipe with addition of a Schedule 40 DWV Socket Coupling (Spears® part no. P100-040 for 4" or P100-060 for 6") and Cap (Spears® part no. P116-040 for 4" or P116-060 for 6").
- T-handle for Plunger operation can be easily fabricated from user-supplied 1" Schedule 40 Pipe and Tee fitting (Spears® part no. 401-010).

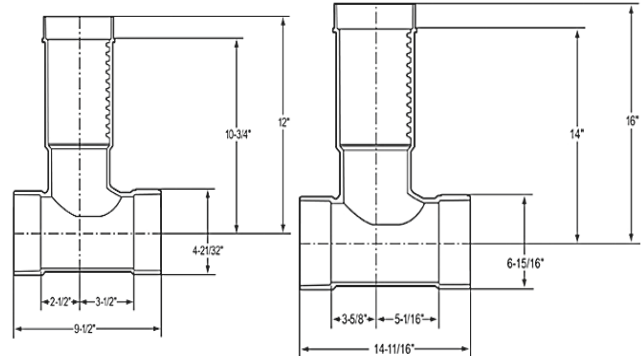
Note - the unit restricts flow by approximately 85%. As a result, the unit must be located in the sewer line where solids are present. Full disconnect is not achieved without solids in the flow.

Auxiliary Components (Purchased Separately)



4" Basic Dimensions

6" Basic Dimensions



Sewer Disconnect

Sewer Disconnect Body

Part Number	Size	Std Pk	Mstr Ctn	Prod Code	MSRP
-------------	------	--------	----------	-----------	------

Sewer Socket X Sewer Socket.

Requires Purchase of SDCP-040 or SDCP-060 Plunger

SDC-040	4	6	0	055	89.21
SDC-060	6	2	0	055	135.81

Sewer Disconnect Plunger

Part Number	Size	Std Pk	Mstr Ctn	Prod Code	MSRP
-------------	------	--------	----------	-----------	------

For Use With Sewer Disconnect Body Purchased Separately.

Requires Purchase of SDC-040 or SDC-060 Body

SDCP-040	4	12	0	055	30.73
SDCP-060	6	6	0	055	59.96

Optional IPS x SEWER Adapter



IPS Socket x Sewer Spigot for adapting Sewer Disconnect Body to Schedule 40 drainage pipe

3729-04013IXS	4	1	90	399	20.42
3729-06013IXS	6	1	15	399	43.09



Valves Product Utility Backwater Valve

Utility Backwater Valve



Spears® Utility Backwater Valves feature an easily serviceable and replaceable Flapper Assembly with extendable access using standard piping components. Designed for direct solvent cement connection to ASTM D 2665 DWV drainage pipe or any other IPS size pipe. Spears® IPS x Sewer adapters easily convert valve to ASTM D 3034 SDR 35 Sewer Pipe. Backwater Valves conform to requirements of ASME/ANSI A112.14.1 Utility

Backwater Valves are designed to prevent backflow in numerous applications where easy service access for maintenance and cleaning is needed. Excellent for use in sanitary or storm sewer drainage systems to prevent waste back up due to inadequate drainage, for balancing multi-level ponds, aquaculture features or storage tank systems, and many other applications. Spears® Utility Backwater Valve has been engineered for easier installation with included Extension Kit Adapter components for use with User-Supplied Schedule 40 or Class 125 Extension Riser pipe cut to desired length. Utility Backwater Valve package comes with 50 psi (115 feet of head) rated Extension Adapters. Optional Adapter Kits available in 100 psi (232 feet of head) rating. Can also use User-supplied equivalent adapter components.

- Replaceable internal flapper assembly.
- Extension Kit Adapter components allow easy use with assembly user supplied pipe cut to desired length.
- Direct Valve Connection to ASTM D 2665 PVC DWV or other IPS size pipe. Spears® IPS DWV x Sewer & Drain Adapter are available for connection to ASTM D 3034 & ASTM D 2729 Sewer pipe.
- Standard Valve Extension Adapters Pressure Rated to 50 psi (115 feet of head) @ 73°F (23°C) - Optional 100 psi Adapter (232 feet of head) available.
- Conforms to ASME/ANSI A112.14.1 for Backwater Valves.

Part Number	Size	Std Pk	Mstr Ctn	Prod Code	MSRP
-------------	------	--------	----------	-----------	------

Utility Backwater Valve w/Extension Adapters

Valve Package includes Body, Flapper Assembly and Extension Adapters (female thread & male thread plug) with 50 psi Extension Adapters Rating 100 psi Extension Adapter Available.



Requires User-Supplied 6" (for 4" valves) or 8" (for 6" valves) from Schedule 40 or Class 125 Riser Extension Pipe cut to desired length and 1" or 1-1/4" Internal Extension Pipe

SML-3	3	1	0	055	71.48
SML-4	4	1	0	055	80.37
SML-6	6	1	0	055	108.42

Part Number	Size	Std Pk	Mstr Ctn	Prod Code	MSRP
-------------	------	--------	----------	-----------	------

Utility Backwater Valve Only Includes Valve Body & Flapper Assembly

Socket x Socket

Requires used of either 50 psi or 100 psi Extension Kit, or use of User-supplied equivalent components



SML-3XP-A	3	1	0	055	49.42
SML-4XP-A	4	1	0	055	54.44
SML-6XP-A	6	1	0	055	80.63

Utility Backwater Valve Extension Adapter Kit

Select 50 psi or 100 psi Kit

Kit includes Female Threaded Cleanout Adapter and Male Threaded Plug for use with User-Supplied 6" (for 4" valves) or 8" (for 6" valves) from Schedule 40 or Class 125 Riser Extension Pipe



Note: 50 psi Kits have DWV Cleanout Plugs, 100 psi kits have Schedule 40 Threaded Plugs. User-supplied equivalent components can also be used.

SML4XP-A-EK50	3" & 4" 50 psi	1	0	055	41.48
SML4XP-A-EK100	3" & 4" 100 psi	1	0	055	85.55
SML6XP-A-EK50	6" 50 psi	3	0	055	58.18
SML6XP-A-EK100	6" 100 psi	3	0	055	106.78

Utility Backwater Valve Flapper Replacement Kit

Kit include Flapper Assembly For Repair or Replacement



SML4XP-A-FRK	3" & 4"	1	10	055	33.74
SML6XP-A-FRK	6"	1	5	055	40.09

IPSX Sewer Adapter

IPS DWV Spigot x Sewer Hub



Adapts IPS DWV Valve Socket to Sewer Pipe

P118-030	3	25	0	051	6.53
P118-040	4	10	0	051	7.06
3729-06031XS	6	1	4	399	62.06