

C-FLEX-0320

NIBCO®

AHEAD OF THE FLOW®



NIBCO® Flexible
Piping Systems

Business-to-Business Solutions

Look to NIBCO for technology leadership.

The velocity with which e-business evolves demands that new products and services be continuously developed and introduced to keep our customers at the center of our business efforts. NIBCO provides an entire suite of business-to-business solutions that is changing the way we interact with customers.



NIBCOpartner.comSM is an exclusive set of secure web applications that allow quick access to customer-specific information and online order processing. This self-service approach gives you 24/7 access to your order status putting you in total control of your business.



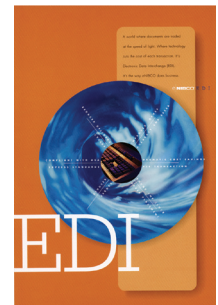
Real time information includes:

- Online order entry
- Viewable invoices & reports
- Inventory availability
- Current price checks
- Order status
- Online library of price sheets, catalogs & submittals

Electronic Data Interchange (EDI) makes it possible to trade business documents at the speed of light. This technology cuts the cost of each transaction by eliminating the manual labor and paperwork involved in traditional order taking. This amounts to cost-savings, increased accuracy and better use of resources.

With EDI, you can trade:

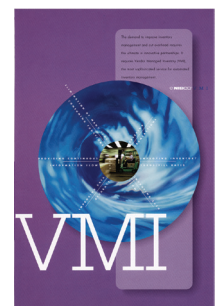
- Purchase orders
- PO Acknowledgements
- Invoices
- Product activity data
- Advanced ship notices
- Remittance advice



Vendor Managed Inventory (VMI), a sophisticated service for automated inventory management, reduces your overhead by transferring inventory management, order entry and forecasting to NIBCO. This is an on-going, interactive partnership with NIBCO.

Through automation, VMI brings results:

- Improves customer service
- Optimum inventory efficiencies
- Better forecasting
- Cuts transaction costs
- Peace of mind
- Relief from day-to-day management



Visit our website for the most current information.

Table Of Contents

Introduction	4
Material Selection	5 - 7
Fitting Terms and Abbreviations	7
Metal Insert Fittings	8 - 11
Plastic Insert Fittings	12 - 13
Multiport Tees	14
Connections (Crimp Rings and Sleeves)	14
Valves	15
Tools and Accessories	16 - 17
NIBCO [®] Warranty	18

Applications

NIBCO fittings and joining devices are designed to work in potable water applications with PEX and PE-RT. This includes PEX types a, b, and c.

Standards and Approvals

PEX insert fittings and copper crimp rings are manufactured to comply with CSA B137.5 and ASTM F807. NIBCO poly fittings are manufactured to comply with ASTM F2159. PEX components are listed for compliance to NSF/ANSI 14 and NSF/ANSI 61 by NSF International for use in potable water systems. PEX fittings intended for use in potable water are also evaluated for compliance with the lead free requirements, as per test method NSF/ANSI 372.



Operating Limits

Water: 160 PSI @ 73° F (1.10 MPa @ 23° C)
100 PSI @ 180° F (0.69 MPa @ 82° C)
80 PSI @ 200° F (0.55 MPa @ 93° C)*

Epoxy

NIBCO does not recommend exposing any of our plastic piping components, o-rings, or elastomer seals to epoxy coatings of any kind.

Material Selection

Plastic Piping Standards

Many commercial, industrial, and governmental standards or specifications are available to assist the design engineer in specifying plastic piping systems. Standards most frequently specified in plastic piping systems are American Society for Testing and Materials (ASTM) Standards. Below is a list and description of those standards most typically applied to industrial plastic piping.

Polyethylene (PE & PE-RT)

Polyethylene is the most common olefin material and is used in transporting water. Because olefins cannot be joined with cements, barbed insert fittings are used for mechanical assembly. PE is light weight, low cost, has excellent chemical resistance, low coefficient of friction, and is non-toxic.

Cross-Linked Polyethylene (PEX)

PEX is the common name for cross-linked polyethylene. PEX tubing is predominantly used in water distribution systems, hydronic radiant heating systems, and natural gas systems.

Almost all PEX is made from high density polyethylene (HDPE). PEX contains cross-linked bonds that are introduced into the polymer structure, changing the thermoplastic into a thermoset. Cross-linking is accomplished during or after the extrusion of the tubing. The required degree of cross-linking, according to ASTM F876, is between 65 to 89 percent.

The cross-linking process improves high-temperature properties, toughness, chemical resistance and abrasion resistance.

Cross-linking may be done by the peroxide (Engel) method, silane (moisture cure) method, or electron beam method.

Modified Polyphenylsulfone (PPSU)

Polyphenylsulfone is a thermoplastic that is tough, rigid, high-strength, and retains its properties between -148° F and 302° F (-100° C and 150° C). PPSU has very high dimensional stability; the size change when exposed to boiling water or 302° F (150° C) air generally falls below 0.1 percent. Polyphenylsulfone is resistant to acids and bases. PPSU is resistant to oxidizing agents; therefore, can be cleaned by bleaches. However, PPSU is not resistant to low-polar organic solvents (e.g., ketones and chlorinated hydrocarbons) and aromatic hydrocarbons. In addition, PPSU is often chosen for difficult applications including high water temperatures, chlorides, or when water quality may increase the risk of dezincification, a type of corrosion that can adversely affect metal fittings.

Brass

Brass is the term used for copper alloys where zinc is the principle alloying element along with copper. Brass has a yellow color, somewhat similar to gold. Brass plumbing components may be machined from extruded shapes, forged, or cast. This alloy is mainly used for decorative fixtures, plumbing components, and electrical applications. Today, almost 90% of all brass alloys are recycled.

Copper (Cu)

Copper (Cu) is a natural element that has historically been the dominant material used in plumbing, heating, cooling, and other piping applications. Copper is a ductile metal with excellent thermal conductivity and is corrosion resistant. The materials used in copper piping products comply with the requirements of specifications established by the American Society for Testing and Materials (ASTM). The alloy customarily used for copper tube and copper fittings is designated as C12200 (Copper No. 122). This alloy contains a minimum of 99.9% pure copper and is deoxidized by the addition of phosphorus. Other copper alloys may be used.

Visit our website for the most current information.

Material Selection

Plastic Piping Standards

NSF/ANSI 61

Drinking Water System Components - Health Effects. This is the American National Standard for health effects of drinking water system components. This standard establishes the health effects requirements for the chemical contaminants and impurities that are indirectly imparted to drinking water from products, components and materials used in drinking water systems. This Standard is maintained by a Joint Committee with equal representation from regulators (such as; EPA, Health Canada, and state drinking water officials), users (such as; water purveyors, utilities, and engineers) and manufacturers. NSF/ANSI Standard 61 is approved by the American National Standards Institute, which ensures the standard is developed and maintained using an open consensus process and has representation by all stakeholders.

NSF/ANSI 14

Plastics Piping System Components and Related Materials. NSF/ANSI Standard 14 establishes minimum physical, performance, health effects, quality assurance, marking, and record keeping requirements for plastic piping components and related materials such as: Thermoplastic Materials, Thermoset Materials, Non-plastic Components, Piping and Tubing, Fittings and Valves, Appurtenances, Joining Materials, and Gaskets, Ingredients of Materials and Special Engineered Products and Materials. Standard 14 outlines production facility inspection, quality control, short-term performance testing, long-term performance evaluation, and chemical extraction testing of the products to ensure continued compliance. The NSF Mark for these certified products include such things as the manufacturer name or trademark; the certification agency/laboratory name or trademark; the reference performance standard (such as ASTM F876 and F877); product end use (pw or rfh), material type designation such as PEX or PEX/AL/PEX; product size, date of production and manufacturer identification code for tubing. For products with size constraints that do not accommodate complete marking, the manufacturer must include all such details on the product packaging.

ASTM Standard F876

Standard Specification for Cross-linked Polyethylene (PEX) Tubing. This Standard contains dimensional requirements for tubing in addition to burst, sustained pressure, and other relevant performance tests at different water temperatures.

ASTM Standard F877

Standard Specification for Cross-linked Polyethylene (PEX) Plastic Hot- and Cold-Water Distribution Systems. This Standard contains performance requirements for PEX tubing and fittings systems. Also, this Standard contains test methods and methods of marking for components used in PEX hot- and cold-water distribution systems intended for 100 psi (0.69 MPa) water service up to and including 180°F (82°C).

ASTM Standard F1807

Standard Specification for Metal Insert Fittings Utilizing a Copper Crimp Ring for SDR9 Cross-linked Polyethylene (PEX) Tubing. This Standard contains material and dimensional requirements for the insert fittings and crimp rings used with PEX tubing. The performance requirements for these products are defined within ASTM F877.

ASTM Standard F2159

Specification for Plastic Insert Fittings Utilizing a Copper Crimp Ring for SDR9 Cross-linked Polyethylene (PEX) Tubing. This Standard covers Polyphenylsulfone insert fittings and copper crimp rings for use with cross-linked polyethylene (PEX) tubing. The performance requirements for these products are defined within ASTM F877.

ASTM Standard F2623

Standard Specification for Polyethylene Raised Temperature (PE-RT) Tubing. The tubing produced under this specification is for use in general fluid transport, including hydronics and irrigations systems.

Visit our website for the most current information.

Material Selection

Plastic Piping Standards

CSA B137.5

Crosslinked polyethylene (PEX) tubing systems for pressure applications.

CSA B137.18

Polyethylene of raised temperature resistance (PE-RT) tubing systems for pressure applications.

ASTM Standard F2769

Standard Specification for Polyethylene Raised Temperature (PE-RT) Tubing. This Standard contains dimensional requirements for tubing in addition to burst, sustained pressure, and other relevant performance tests at different water temperatures.

NSF-pw

Identification mark for products that meet all applicable performance standards for pressure-rated potable water applications as required by NSF/ANSI Standard 14 and that comply with NSF/ANSI Standard 61 for health effects.

NSF-rfh

Identification mark for products that meet all applicable performance standards for a pressure-rated in-floor heating application as required by NSF/ANSI Standard 14. No health effects evaluation is required.

NSF-61

Identification mark for products that meet the applicable requirements of NSF/ANSI 61.

California Proposition 65

In November 1986, California voters approved a ballot initiative to address concerns about exposures to toxic chemicals. That initiative became The Safe Drinking Water and Toxic Enforcement Act of 1986, better known by its original name, Proposition 65. This Proposition requires the Governor of California to publish a list of chemicals that are known to the State of California to cause cancer, birth defects or other reproductive harm. Over 750 chemicals and materials, including many metals and plastics, have been listed as of December 12, 2006. Second, Manufacturers are required to provide a "clear and reasonable" warning before exposing anyone to a listed chemical. This warning can be given by a variety of means, such as by labeling a consumer product, by posting signs at the workplace, or by publishing notices in a newspaper. A Proposition 65 warning means that the Manufacturer issuing the warning believes that one or more listed chemicals is present in its product, even if it is only present in trace quantities.

Kentucky

Metal insert fittings utilizing a copper crimp ring for cross-linked polyethylene (PEX) tubing must be produced and labeled as ASTM F1807. Methods of joining other than mentioned above shall be prohibited unless documentation is provided, from the systems manufacturer, honoring full warranty of the system installed. Fittings which have a smaller ID (inside diameter) other than what is required for the insert portion of the fitting shall not be permitted. A system consisting of material from multiple manufacturers (i.e. fittings, tubing and crimp rings) shall be prohibited unless documentation from manufacturers is produced providing full warranty. Connections for PEX systems other than those in section 1 of this regulation will be prohibited.

Fitting Terms and Abbreviations

FIP = Female Iron Pipe

MIP = Male Iron Pipe

NPSM = Straight Pipe Thread

CTS = Copper Tube Size

SVL = Swivel

PB = Polybutylene

MSWT = Male Sweat

FSWT = Female Sweat

Visit our website for the most current information.

METAL INSERT FITTINGS FOR PEX AND PE-RT LEAD-FREE* PERFORMANCE BRONZE®

COUPLINGS

NP01-LF
NP01R-LF



COUPLINGS

Figure No.	Material No.	Size	Weight	Bag Qty	Master Ctn Qty
NP01-LF	PX80500X	3/8"	0.018	25	2,000
NP01R-LF	PX80510A	1/2" x 3/8"	0.024	50	1,000
NP01-LF	PX80521A	1/2"	0.032	50	1,000
NP01R-LF	PX80540A	3/4 x 1/2"	0.056	25	500
NP01-LF	PX80550A	3/4"	0.058	25	500
NP01R-LF	PX80560A	1 x 3/4"	0.093	15	120
NP01-LF	PX80570A	1"	0.106	15	120
NP01R-LF	PX80590A	1 1/4 x 3/4"	0.095	10	80
NP01R-LF	PX80600X	1 1/4 x 1"	0.126	10	80
NP01-LF	PX80580E	1 1/4"	0.126	25	150

ELBOWS

NP07-LF
NP07R-LF



ELBOWS

Figure No.	Material No.	Size	Weight	Bag Qty	Master Ctn Qty
NP07-LF	PX80631A	1/2"	0.0440	50	750
NP07R-LF	PX80640A	3/4" x 1/2"	0.1280	25	300
NP07-LF	PX80650A	3/4"	0.0820	25	300
NP07-LF	PX80660A	1"	0.1800	15	150
NP07-LF	PX80670E	1 1/4"	0.2730	10	100

TEES

NP11-LF
NP11R-LF



Tees

Figure No.	Material No.	Size	Weight	Bag Qty	Master Ctn Qty
NP11-LF	PX80711A	1/2"	0.065	50	500
NP11R-LF	PX80720E	1/2 x 1/2" x 3/4"	0.150	25	250
NP11R-LF	PX80730A	3/4 x 1/2" x 1/2"	0.128	25	250
NP11R-LF	PX80740A	3/4 x 1/2" x 3/4"	0.102	25	250
NP11R-LF	PX80750A	3/4 x 3/4" x 1/2"	0.092	25	250
NP11-LF	PX80760A	3/4"	0.125	25	250
NP11R-LF	PX80800A	1 x 1 x 1/2"	0.130	15	120
NP11R-LF	PX80810A	1 x 1" x 3/4"	0.211	15	120
NP11-LF	PX80820X	1"	0.198	10	120
NP11-LF	PX80860X	1 1/4"	0.355	10	60
NP11R-LF	PX80880X	1 1/4" x 1" x 1"	0.289	10	60
NP11R-LF	PX80870E	1 1/4" x 1 1/4" x 1"	0.275	10	80

*Weighted average lead content ≤ 0.025%

Visit our website for the most current information.

METAL INSERT FITTINGS FOR PEX AND PE-RT LEAD-FREE* PERFORMANCE BRONZE®

ADAPTERS

NP22F-LF



SWEAT ELBOW ADAPTERS**

Figure No.	Material No.	Description	Weight	Bag Qty	Master Ctn Qty
NP22F-LF	PX81030E	3/4" x 3/4" Female Sweat Elbow Adapter	0.1080	10	50

NP23-LF



MALE SWEAT ADAPTERS**

Figure No.	Material No.	Description	Weight	Bag Qty	Master Ctn Qty
NP23-LF	PX81070X	1/2" x 1/2" Male Sweat Adapter	0.032	50	500
NP23-LF	PX81090A	3/4" x 3/4" Male Sweat Adapter	0.064	25	250
NP23-LF	PX81100A	1" x 1" Male Sweat Adapter	0.116	15	120

NP23F-LF



FEMALE SWEAT ADAPTERS**

Figure No.	Material No.	Description	Weight	Bag Qty	Master Ctn Qty
NP23F-LF	PX81121A	1/2" x 1/2" Female Sweat Adapter	0.032	25	500
NP23F-LF	PX01676X	1/2" x 3/4" Female Sweat Adapter	0.084	50	500
NP23F-LF	PX81130A	3/4" x 3/4" Female Sweat Adapter	0.062	25	250
NP23F-LF	PX81140A	1" x 1" Female Sweat Adapter	0.130	15	120

NP25B-LF



MIP ADAPTERS

Figure No.	Material No.	Description	Weight	Bag Qty	Master Ctn Qty
NP25B-LF	PX81180X	3/8" x 1/2" MIP Brass Adapter	0.080	25	500
NP25B-LF	PX81191A	1/2" x 1/2" MIP Brass Adapter	0.084	25	100
NP25B-LF	PX81200X	1/2" x 3/4" MIP Brass Adapter	0.130	25	250
NP25B-LF	PX81210A	3/4" x 1/2" MIP Brass Adapter	0.087	25	250
NP25B-LF	PX81220X	3/4" x 3/4" MIP Brass Adapter	0.151	10	300
NP25B-LF	PX81250E	3/4" x 1" MIP Brass Adapter	0.209	25	200
NP25B-LF	PX81240A	1" x 3/4" MIP Brass Adapter	0.137	15	120
NP25B-LF	PX81260A	1" x 1" MIP Brass Adapter	0.242	15	120

*Weighted average lead content ≤ 0.25%

** For solder only, do not Press

Visit our website for the most current information.

METAL INSERT FITTINGS FOR PEX AND PE-RT LEAD-FREE* PERFORMANCE BRONZE®

ADAPTERS

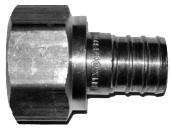
NP25BE-LF



MIP ELBOWS

Figure No.	Material No.	Description	Weight	Bag Qty	Master Ctn Qty
NP25BE-LF	PX81500X	1/2" x 1/2" MIP Elbow	0.1840	50	250
NP25BE-LF	PX81502A	3/4" x 1/2" MIP Elbow	0.1900	25	250

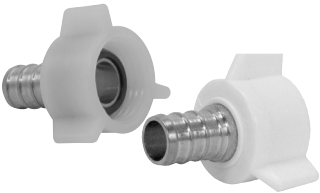
NP26BS-LF



SWIVEL ADAPTERS

Figure No.	Material No.	Description	Weight	Bag Qty	Master Ctn Qty
NP26BS-LF	PX81340A	1/2" x 3/4" NPSM Swivel Adapter - Brass Nut	0.170	25	50
NP26BS-LF	PX81360A	3/4" x 3/4" NPSM Swivel Adapter - Brass Nut	0.150	25	250

NP26PS-LF NP44-LF



FAUCET AND SWIVEL ADAPTERS

Figure No.	Material No.	Description	Weight	Bag Qty	Master Ctn Qty
NP26PS-LF	PX81330A	3/8" x Faucet Swivel Adapter - Plastic Nut	0.044	25	50
NP26PS-LF	PX02345A	1/2" x Faucet Swivel Adapter - Plastic Nut	0.048	50	500
NP44-LF	PX81380A	1/2" x Closet Swivel Adapter - Plastic Nut	0.062	10	50

NP27P-LF



FAUCET ELBOWS

Figure No.	Material No.	Description	Weight	Bag Qty	Master Ctn Qty
NP27P-LF	PX02245A	1/2 x 1/2" NPSM Faucet Elbow (Plastic Nut)	0.091	50	250

NOTE: Faucet and Swivel Adapters are to be hand tightened ONLY.

NP26BE-LF



FEMALE ELBOW NON-SWIVEL ADAPTERS

Figure No.	Material No.	Description	Weight	Bag Qty	Master Ctn Qty
NP26BE-LF	PX81317X	1/2 x 3/4 FIP Elbow Non-Swivel Adapter	0.1610	25	200

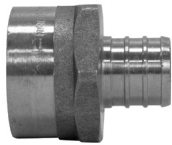
*Weighted average lead content ≤ 0.25%

Visit our website for the most current information.

METAL INSERT FITTINGS FOR PEX AND PE-RT LEAD-FREE* PERFORMANCE BRONZE®

ADAPTERS

NP26B-LF



FIP NON-SWIVEL ADAPTERS

Figure No.	Material No.	Description	Weight	Bag Qty	Master Ctn Qty
NP26B-LF	PX81271A	1/2" x 1/2" FIP Non-Swivel Adapter	0.1200	25	100
NP26B-LF	PX81280X	1/2" x 3/4" FIP Non-Swivel Adapter	0.1320	25	250
NP26B-LF	PX81285X	3/4" x 1/2" FIP Non-Swivel Adapter	0.1320	25	250
NP26B-LF	PX81300A	3/4" x 3/4" FIP Non-Swivel Adapter	0.1650	25	250
NP28B-LF	PX81305X	3/4" x 1" FIP Non-Swivel Adapter	0.1500	15	120
NP26B-LF	PX81310A	1" x 1" FIP Non-Swivel Adapter	0.2280	15	120
NP26B-LF	PX81313E	1 1/4" x 1" FIP Non-Swivel Adapter	0.2290	10	60

MISCELLANEOUS FITTINGS

NP18-LF



PLUGS

Figure No.	Material No.	Description	Weight	Bag Qty	Master Ctn Qty
NP18-LF	PX81450A	1/2"	0.023	50	1,500
NP18-LF	PX81460A	3/4"	0.046	25	1,000
NP18-LF	PX81480E	1"	0.066	15	120
NP18-LF	PX81470E	1 1/4"	0.071	15	120

NP28-LF



FIP DROP EAR ELBOWS

Figure No.	Material No.	Description	Weight	Bag Qty	Master Ctn Qty
NP28-LF	PX81400A	1/2" x 1/2" FIP Drop Ear Elbow	0.1780	25	200
NP28-LF	PX81420E	3/4" x 3/4" FIP Drop Ear Elbow	0.2870	25	100

NP29R-LF



POLYBUTYLENE TRANSITION FITTINGS

Figure No.	Material No.	Description	Weight	Bag Qty	Master Ctn Qty
NP29R-LF	PX02283A	1/2" x 1/2" PB Transition Fitting w/Rings	0.0500	25	250
NP29R-LF	PX02293A	3/4" x 3/4" PB Transition Fitting w/ Rings	0.1000	25	100

Kit includes fitting, PEX/PE-RT crimp ring, PB crimp ring

*Weighted average lead content ≤ 0.25%

Visit our website for the most current information.

PLASTIC INSERT FITTINGS

POTABLE WATER - NOT FOR RADIANT HEAT USE

NPD01 NPD01R



POLY COUPLINGS

Figure No.	Material No.	Size	Weight	Bag Qty	Master Ctn Qty
NPD01	PX00508C	3/8"	0.0070	50	2,500
NPD01R	PX00518C	1/2" x 3/8"	0.0070	50	2,000
NPD01	PX00528G	1/2"	0.0020	50	500
NPD01R	PX00538G	3/4" x 1/2"	0.0100	50	1,200
NPD01	PX00548G	3/4"	0.0100	50	500
NPD01R	PX00558C	3/4" x 1"	0.0200	25	500
NPD01	PX00578C	1"	0.0200	25	500

NPD07 NPD07R



POLY ELBOWS

Figure No.	Material No.	Size	Weight	Bag Qty	Master Ctn Qty
NPD07	PX00588G	1/2"	0.0100	50	500
NPD07R	PX00598C	3/4" x 1/2"	0.0200	25	250
NPD07	PX00608G	3/4"	0.0200	25	600
NPD07R	PX00612C	1" x 3/4"	0.0370	25	250
NPD07	PX00618G	1"	0.0500	25	250

NPD11 NPD11R



POLY TEES

Figure No.	Material No.	Size	Weight	Bag Qty	Master Ctn Qty
NPD11	PX00628C	3/8"	0.0160	25	1,200
NPD11	PX00638C	1/2"	0.0100	50	500
NPD11R	PX00648C	1/2" x 1/2" x 3/4"	0.0200	25	500
NPD11R	PX00658G	3/4" x 1/2" x 1/2"	0.0200	25	300
NPD11R	PX00668G	3/4" x 1/2" x 3/4"	0.0200	25	400
NPD11R	PX00678C	3/4" x 3/4" x 1/2"	0.0200	25	400
NPD11	PX00688C	3/4"	0.0300	25	300
NPD11R	PX00698C	3/4" x 3/4" x 1"	0.0500	25	300
NPD11R	PX00708C	1" x 3/4" x 3/4"	0.0500	25	250
NPD11R	PX00718C	1" x 3/4" X 1"	0.0500	25	200
NPD11R	PX00728G	1" x 1" x 1/2"	0.0400	25	250
NPD11R	PX00738C	1" x 1" x 3/4"	0.0500	25	250
NPD11	PX00748C	1"	0.0600	25	150

PLUGS

NP18P



POLY PLUGS

Figure No.	Material No.	Size	Weight	Bag Qty	Master Ctn Qty
NP18P	PX01975C	3/8"	0.0060	20	3,000
NP18P	PX01980G	1/2"	0.0060	100	1,000
NP18P	PX01990C	3/4"	0.0130	100	1,000
NP18P	PX01995C	1"	0.1690	25	250

Note: If poly fittings come in contact with glues, chemicals, sealers, or solvents; they should be discarded.

Visit our website for the most current information.

PLASTIC INSERT FITTINGS

POTABLE WATER - NOT FOR RADIANT HEAT USE

NPD22



MALE POLY ADAPTERS

Figure No.	Material No.	Description	Weight	Bag Qty	Master Ctn Qty
NPD22	PX01758C	1/2" x 1/2" MIP Poly Adapter	0.0200	50	500
NPD22	PX01768G	3/4" x 3/4" MIP Poly Adapter	0.0200	25	400
NPD22	PX01778C	1/2" x 3/4" MIP Poly Adapter	0.0180	25	700
NPD22	PX01788C	3/4" x 1/2" MIP Poly Adapter	0.0180	25	600
NPD22	PX01798C	1" MIP Poly Adapter	0.0200	25	300

NPD25BE



MALE ELBOW POLY ADAPTERS

Figure No.	Material No.	Description	Weight	Bag Qty	Master Ctn Qty
NPD25BE	PX01948C	1/2" X 3/8" MIP Poly Adapter Elbow	0.0180	25	900
NPD25BE	PX01958C	1/2" X 1/2" MIP Poly Adapter Elbow	0.0180	50	800
NPD25BE	PX01968C	3/4" x 1/2" MIP Poly Adapter Elbow	0.0180	25	500
NPD25BE	PX01978C	3/4" MIP Poly Adapter Elbow	0.0180	25	400
NPD25BE	PX01988C	1" X 3/4" MIP Poly Adapter Elbow	0.0180	25	500

NPD26 NPD26E



FEMALE POLY SWIVEL ADAPTERS

Figure No.	Material No.	Description	Weight	Bag Qty	Master Ctn Qty
NPD26	PX01898C	3/4" x 3/4" NPSM Poly Swivel	0.0400	50	500
NPD26	PX02148C	3/8" x 1/2" NPSM Poly Swivel (Faucet)	0.0300	50	600
NPD26	PX01888C	1/2" x 1/2" NPSM Poly Swivel (Faucet)	0.0260	25	500
NPD26C	PX02358C	1/2" x 7/8" NPSM Poly Swivel (Closet/Ballcock)	0.0300	25	400
NPD26E	PX02248C	1/2" x 1/2" NPSM Poly Swivel Elbow (Faucet)	0.0300	10	500
NPD26E	PX02348C	3/4" x 3/4" NPSM Poly Swivel Elbow	0.0300	25	400

Note: If poly fittings come in contact with glues, chemicals, sealers, or solvents; they should be discarded.

Visit our website for the most current information.

MULTIPOINT TEES

POTABLE WATER - NOT FOR RADIANT HEAT USE

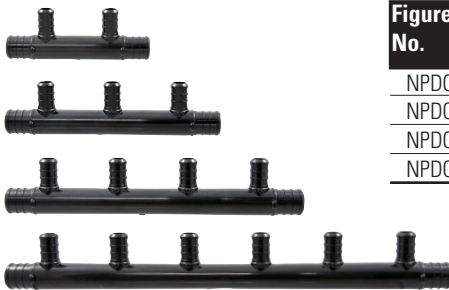
NPDCMT



MULTIPOINT TEES - CLOSED

Figure No.	Material No.	Description	Weight	Bag Qty	Master Ctn Qty
NPDCMT102	PX30500	MULTIPOINT TEE 3/4" 2-PORT CLOSED	0.036	10	100
NPDCMT103	PX30501	MULTIPOINT TEE 3/4" 3-PORT CLOSED	0.054	10	100
NPDCMT104	PX30502	MULTIPOINT TEE 3/4" 4-PORT CLOSED	0.072	10	100
NPDCMT106	PX30503	MULTIPOINT TEE 1" 6-PORT CLOSED	0.143	10	100

NPDOMT



MULTIPOINT TEES - OPEN

Figure No.	Material No.	Description	Weight	Bag Qty	Master Ctn Qty
NPDOMT102	PX30504	MULTIPOINT TEE 3/4" 2-PORT OPEN	0.039	10	100
NPDOMT103	PX30505	MULTIPOINT TEE 3/4" 3-PORT OPEN	0.058	10	100
NPDOMT104	PX30506	MULTIPOINT TEE 3/4" 4-PORT OPEN	0.076	10	100
NPDOMT106	PX30507	MULTIPOINT TEE 3/4" 6-PORT OPEN	0.112	10	100

CONNECTIONS (CRIMP and SLEEVE)

NP19



COPPER CRIMP RINGS

Figure No.	Material No.	Description	Weight	Bag Qty	Master Ctn Qty
NP19	PX80905	3/8" Copper Crimp Ring (black)	0.0110	25	250
NP19	PX80915	1/2" Copper Crimp Ring (black)	0.0130	100	1,000
NP19	PX80925	3/4" Copper Crimp Ring (black)	0.0170	50	500
NP19	PX80935	1" Copper Crimp Ring (black)	0.0220	50	250
NP19	PX80945	1-1/4" Copper Crimp Ring (black)	0.2530	25	250

NP19CS



COPPER CRIMP SLEEVES

Figure No.	Material No.	Description	Weight	Bag Qty	Master Ctn Qty
NP19CS	PX80911	1/2" Copper Crimp Sleeve	0.019	50	600
NP19CS	PX80921	3/4" Copper Crimp Sleeve	0.028	50	500
NP19CS	PX80931	1" Copper Crimp Sleeve	0.031	50	250

NP50



STAINLESS STEEL SLEEVES

Figure No.	Material No.	Description	Weight	Bag Qty	Master Ctn Qty
NP50	PX02110	1/2" SS Sleeve	0.0060	50	5,000
NP50	PX02120	3/4" SS Sleeve	0.0100	50	2,500
NP50	PX02130	1" SS Sleeve	0.0100	50	2,500

Visit our website for the most current information.

VALVES

PXCP400-LF, NPR50A-LF



LEAD-FREE* BALL VALVES

Figure No.	Material No.	Description	Weight	Bag Qty	Master Ctn Qty
PXCP400-LF	PX01526X	1/2" Brass Ball Valve w/ LH	0.2500	18	18
PXCP400-LF	PX01546X	3/4" Brass Ball Valve w /LH	0.4100	12	12
PXCP400-LF	PX01566X	1" Brass Ball Valve w/ LH	0.5700	6	6
NPR50A- LF	PX10297X	1/2" Mini Brass Ball Valve	0.1500	10	100

STRAIGHT STOP VALVES

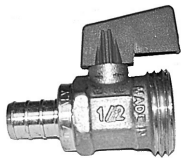


Figure No.	Material No.	Description	Weight	Bag Qty	Master Ctn Qty
NP7160-LF	ND615L8	1/2" x 1/4" OD (Icemaker) Straight Stop	0.1530		5
7160-LF	ND618L6	Straight Supply Stop 1/2" x 3/8"OD	0.1520		10
7160PEX-LF	ND618L7	Straight Supply Stop 1/2" x 1/2"	0.1340		10
7160M-LF	ND618L5	1/2" x 1/2" Male Straight Supply Stop	0.1590		10



ANGLE STOP VALVES

Figure No.	Material No.	Description	Weight	Bag Qty	Master Ctn Qty
7165-LF	ND615L9	1/2" x 1/4"OD (Icemaker) Angle Supply Stop	0.1650		5
7165-LF	ND619L6	Angle Supply Stop 1/2" x 3/8" OD	0.1640		10
7165PEX-LF	ND619L7	1/2" x Angle Stop	0.1480	5	200



OTHER VALVES

Figure No.	Material No.	Description	Weight	Bag Qty	Master Ctn Qty
NP7170	PX01521E	1/2" x Hose Thread Valve	0.1500	10	150

Visit our website for the most current information.

CRIMP & SLEEVE TOOLS



CRIMP TOOLS - COMPACT (11") - N9

Figure No.	Material No.	Description	Weight	Bag Qty	Master Ctn Qty
NP32S	PX02530	1/2" Compact Crimp Tool (No Gauge)	2.00	1	10
NP32C	PX02540	3/4" Compact Crimp Tool w/ Gauge	2.00	1	10



CRIMP TOOLS - STANDARD (13") - N9

Figure No.	Material No.	Description	Weight	Bag Qty	Master Ctn Qty
NP32CH	PX02532	1/2" Standard Crimp Tool w/ Gauge	3.00	1	10
NP32CH	PX02531	3/4" Standard Crimp Tool w/ Gauge	3.00	1	10
NP32CH	PX02533	1" Standard Crimp Tool w/ Gauge	3.25	1	10



CRIMP TOOLS - LONG (15") - N9

Figure No.	Material No.	Description	Weight	Bag Qty	Master Ctn Qty
NP32LH	PX02545	1-1/4" Long Handle Crimp Tool w/ Gauge (19")	6.00	1	10



STAINLESS STEEL CLAMP TOOL - N9

Figure No.	Material No.	Description	Weight	Bag Qty	Master Ctn Qty
NP53	PX01291	SS Clamp Tool	1.38	1	10



STAINLESS STEEL SLEEVE TOOLS - N9

Figure No.	Material No.	Description	Weight	Bag Qty	Master Ctn Qty
NP52	PX01364C	1/2" SS Sleeve Tool (12")	3.00	1	16
NP52C	PX01365	1/2" Compact SS Sleeve Tool	2.00	1	10
NP52	PX01366C	3/4" SS Sleeve Tool (12")	4.00	1	16
NP52	PX01368	1" SS Sleeve Tool (12")	4.50	1	12

TOOLS & ACCESSORIES

NP34



OTHER TOOLS & ACCESSORIES

Figure No.	Material No.	Description	Weight	Bag Qty	Master Ctn Qty
NP34	PX01384	3/8" - 1" Go/No Go Gauge	0.15	10	300

Visit our website for the most current information.

MINI PRESSING TOOL AND CRIMP JAWS



PC-20M

PC-20M MINI PRESSING TOOL & CRIMP JAWS

Figure No.	Material No.	Description	Weight	Box Qty
PC-20M	R00205PC	Mini Pressing Tool, 2 - 18V, 1.3 Ah Lithium-ion batteries, 110V charger & case (NO jaws)	17.20	1
PCX-200M	R00205PCX	Mini Pressing Tool, 3 Crimp Jaws (1/2", 3/4" & 1"), Includes Gauge, 2 - 18V, 1.3 Ah Lithium-ion batteries, 110V charger & case	18.05	1
PCX-1M	R00215PCX	1/2" Crimp Jaw for PC-20M and PC-10M (Includes Gauge)	2.94	1
PCX-6M	R00240PCX	5/8" Crimp Jaw for PC-20M and PC-10M (Includes Gauge)	2.97	1
PCX-2M	R00220PCX	3/4" Crimp Jaw for PC-20M and PC-10M (Includes Gauge)	2.90	1
PCX-3M	R00230PCX	1" Crimp Jaw for PC-20M and PC-10M (Includes Gauge)	2.92	1
PCX-7M	R00250PCX	1-1/4" Crimp Jaw for PC-20M and PC-10M (Includes Gauge)	3.11	1
PC-4ML	R00245PC	18V, 1.3Ah Lithium-ion Battery for PC-20M	0.80	1
PC-7L	R00175PC	18V, 3.0Ah Lithium-ion Battery for PC-20M	1.30	1
PC-8L	R00187PC	110V Battery Charger for PC-4ML and PC-7L	2.20	1
PC-9L	R00195PC	AC Adapter for PC-20M	1.70	1
NP34	PX01388	Go/No Go Crimp Gauge (1/2", 3/4", 1")	0.85	1
NP34	PX01389	Go/No Go Crimp Gauge (5/8", 1-1/4")	0.85	1



PCX-200M



PCX-1M
PCX-2M
PCX-3M
PCX-6M
PCX-7M



PC-7L
18V, 3.0 Ah
Lithium-ion Battery



PC-8L
110V Battery Charger



PC-4M
9.6V, 1.3 Ah NiMH Battery



PC-4ML
18V, 1.3 Ah
Lithium-ion Battery



PC-9L
AC Adapter



PC-5M
120V Battery Charger

Visit our website for the most current information.



NIBCO INC. LIMITED WARRANTY

Applicable to NIBCO INC. PEX Piping Systems

NIBCO INC. warrants NIBCO® PEX fittings, manifolds, transition fittings and valves under normal conditions, use and service in potable water and radiant heat systems, to be free from defects in materials and workmanship for a period of ten (10) years from the date of purchase. NIBCO INC. warrants NIBCO® associated hardware and tools for a period of 90 days from the date of purchase when installed by a licensed professional contractor.

In the event any defect occurs which the owner believes is covered by this warranty, the owner should immediately contact NIBCO Technical Services, either in writing or by telephone at 1.888.446.4226 or 1.574.295.3000. The owner will be instructed to return said fittings or accessories, at the owner's expense, to NIBCO INC., or an authorized representative for inspection. In the event said inspection discloses to the satisfaction of NIBCO INC. that said tube, fitting or accessory is defective, a replacement shall be mailed free of charge to the owner.

IN ORDER FOR THIS LIMITED WARRANTY TO APPLY, THE ABOVE REFERENCED PRODUCTS MUST BE INSTALLED BY A LICENSED PROFESSIONAL PLUMBER IN ACCORDANCE WITH NIBCO INSTALLATION INSTRUCTIONS AND IN COMPLIANCE WITH ALL APPLICABLE CODE REQUIREMENTS. FAILURE TO DO SO WILL VOID ALL APPLICABLE WARRANTIES.

This warranty does not apply and you do not have a right of reimbursement if the failure or resulting damage is caused by:

1. exposure to temperatures and pressures beyond the product ratings as specified on the product or in the NIBCO installation manual;
2. exposure to damaging chemicals, substances or corrosive water conditions;
3. damage from abnormal operating conditions;
4. damage due to accident, abuse, misuse, or unauthorized modification or repair;
5. improper installation due to worn, damaged, unauthorized or improperly calibrated tools;
6. components in the plumbing system other than those manufactured or sold by NIBCO;
7. not designing, installing, inspecting or testing the system in accordance with NIBCO installation instructions at the time of the installation; or
8. failure to follow applicable code requirements and good plumbing practices.

TO THE EXTENT PERMITTED BY LAW, THIS WARRANTY SPECIFICALLY EXCLUDES INCIDENTAL AND CONSEQUENTIAL DAMAGES OF EVERY TYPE AND DESCRIPTION RESULTING FROM ANY CLAIMED DEFECT IN MATERIAL OR WORKMANSHIP, INCLUDING BUT NOT LIMITED TO, PERSONAL INJURIES AND PROPERTY DAMAGES.

Some states or countries do not allow the exclusion or limitation of incidental or consequential damages so these limitations may not apply to you.

TO THE EXTENT PERMITTED BY LAW, IMPLIED WARRANTIES OF MERCHANTABILITY AND FITNESS FOR A PARTICULAR PURPOSE ARE LIMITED IN DURATION.

This warranty gives you specific legal rights, and you may also have other rights which vary from state to state and country to country.

To the best of our knowledge, the information contained in this publication is accurate. However, NIBCO does not assume any liability whatsoever for the accuracy or completeness of such information. Final determinations of the suitability of any information or product for the use to be contemplated is the sole responsibility of the user. The manner of that use, and whether there is any infringement of patents, is also the sole responsibility of the user.

Visit our website for the most current information.

globally connecting you at all levels

It's a new age of business, and a new way at NIBCO. From Elkhart, Indiana to Lodz, Poland, and points beyond, our company has integrated manufacturing, distribution, and networked communications to provide a seamless source of information and service, 24 hours a day, 7 days a week. But this integration hasn't happened overnight. It's been part of a long-term strategic process that has pushed us to reconsider every aspect of our business. The result? We're a vertically integrated manufacturer with the products and systems in place to deliver low cost and high quality. NIBCO products are manufactured under a Quality Management System conforming to the current revision of ISO-9001 International Standards. We know the flow control industry is only going to get more demanding, and we are more than ready. We will continue to lead. That's what NIBCO is all about.



World Headquarters

Elkhart, Indiana

MANUFACTURING

Metal Valves and Fittings



Blytheville, Arkansas



McAllen, Texas



Nacogdoches, Texas



Stuarts Draft, Virginia



Worcester, Massachusetts

Plastic Pipe, Valves, and Fittings



Greensboro, Georgia



Goshen, Indiana



Lebanon, Ohio

Industrial Plastics



Charlestown, Indiana

DISTRIBUTION

International



Reynosa, Mexico



Lodz, Poland

U.S. Distribution Centers



Elkhart, Indiana

INTERNATIONAL

Global Offices



Elkhart, Indiana



Lodz, Poland

*Denotes U.S. and International Direct Shipping Locations

VALVES



Pressure-rated bronze, iron and alloy-iron gate, globe and check valves • Pressure-rated bronze ball valves • Boiler specialty valves • Commercial and industrial butterfly valves • Lined butterfly valves • Circuit balancing valves and kits • Carbon and stainless steel ball valves • ANSI flanged steel ball valves • Lined ball valves • Pneumatic and electric actuators and controls • Grooved ball and butterfly valves • High performance butterfly valves • UL/FM fire protection valves • MSS specification valves • Bronze specialty valves • Low pressure gate, globe, check and ball valves • Frostproof sillcocks • Quarter-turn supply stops • Quarter-turn low pressure valves • PVC and CPVC plumbing and industrial ball valves • Bronze and iron y-strainers • Sample valves • Sanitary valves • Lead-free valves • Hydronic valves • Labor saving valves • Manifold systems • Water temperature control valves • System quality valves • Press x PEX transition valves

FITTINGS

Wrot and cast copper pressure and drainage fittings • Cast copper alloy flanges • Powder coated steel companion flanges • Wrot and cast press fittings • ABS and PVC DWV fittings • Schedule 40 PVC pressure fittings • CPVC CTS fittings • CPVC CTS-to-metal transition fittings • Schedule 80 PVC and CPVC systems • Lead-free fittings • Press x PEX transition fittings • Cast bronze push fittings

LEAD-FREE: Weighted average lead content ≤0.25%



FLEXIBLE PIPING SYSTEMS

PE-RT and PEX tubing for potable and radiant applications • Insulated tubing • Risers • Ice maker tubing • Silicon Performance Bronze® fittings • Poly alloy fittings • Home Run Manifold® • Radiant heat manifolds • Ball valves and supply stops • Connections, tools and accessories • Radiant heat controls and panels



INDUSTRIAL PLASTICS

PVC and Corzan® CPVC schedule 80 fittings, true union ball and ball check valves, butterfly valves, and specialty valves • Polypropylene and Kynar® PVDF schedule 80 pipe, fittings, and true union ball and ball check valves • Pneumatic and electric actuation systems

Corzan® are registered trademarks of the Lubrizol Corporation
Kynar® is a registered trademark of Arkema Inc.



eNIBCO

EDI—Electronic Data Interchange • VMI—Vendor Managed Inventory • NIBCO.com • NIBCOpartner.com



NIBCO®
AHEAD OF THE FLOW®

NIBCO INC.
WORLD HEADQUARTERS
WEB: www.nibco.com

1516 MIDDLEBURY STREET
ELKHART, IN 46516-4740
USA

DOMESTIC CUSTOMER SERVICE
PHONE: 800.234.0227
FAX: 800.234.0557

TECHNICAL SERVICE
PHONE: 888.446.4226
FAX: 888.336.4226

INTERNATIONAL OFFICE
PHONE: +1/574.295.3327
FAX: +1/574.295.3455