

Schedule 80 CPVC Product  
**GripLoc™ Coupling & GripLoc™ Cap & CPVC Flange Cut-in Kit**



**GripLoc™ Coupling**

Part Number	Size	Std Pk	Mstr Ctn	Prod Code	MSRP
-------------	------	--------	----------	-----------	------

**GripLoc™ Coupling**

**WARNING: DO NOT INSERT FINGERS**  
**EPDM Gasket**  
**Pressure Rated to 235 psi @ 73°F**



Uses No Solvent Cement

GL429-005C	1/2	1	40	132	18.71
GL429-007C	3/4	1	36	132	23.08
GL429-010C	1	1	20	132	24.79
GL429-012C	1-1/4	1	15	132	26.24
GL429-015C	1-1/2	1	15	132	26.24
GL429-020C	2	1	10	132	29.17

**GripLoc™ IPS Size Release Tool**

**For Removal of GripLoc™ Fittings**

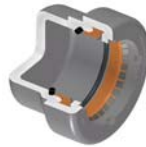


GLIPSRT-005	1/2	1	50	299	5.83
GLIPSRT-007	3/4	1	50	299	5.83
GLIPSRT-010	1	1	50	299	5.83

**GripLoc™ Cap**

**GripLoc™ Cap**

**WARNING: DO NOT INSERT FINGERS**  
**EPDM Gasket**  
**Pressure Rated to 235 psi @ 73°F**



Uses No Solvent Cement

GL447-005C	1/2	25	150	132	16.34
GL447-007C	3/4	1	50	132	21.02
GL447-010C	1	1	50	132	23.01
GL447-012C	1-1/4	1	25	132	31.56
GL447-015C	1-1/2	1	25	132	36.69
GL447-020C	2	1	25	132	42.14

**CPVC Flange Cut-in Kit**

When planned system changes are needed, system downtime can be a major concern. Spears® Flange Cut-in Kit minimizes downtime for actual cut-in to allow new connection in just minutes. Kit provides all necessary components to create a flanged joint for connection to system alterations in just minutes. Special Flange Hub can be cemented to piping and allowed to cure before shutting down and cutting into system. This allows immediate joining to mating flange (included) that can also be pre-assembled to desired alteration piping.

Kit includes special Split Flange Socket Hub, O-ring Sealed Hub Body, Stainless Steel Clamp, Split Ring, Full-Faced EPDM or FKM Gasket, Mating Flange Hub & Ring, and complete set of Stainless Steel Bolts, Flat Washers and anti-seize Brass Nuts to make the final joint. Available for IPS Pipe Sizes 1-1/2" - 12".

(Continued on next column)

**CPVC Flange Cut-in Kit**



Pressure Rated to 150 psi @ 73°F (22°C)  
 Maximum Service Temperature  
 PVC = 140°F (60°C)  
 CPVC = 200°F (93°C)  
 Temperature/Pressure De-ratings Apply

**Flange Cut-in Kit**

Size	EPDM Gasket	FKM Gasket	Std Pk	Mstr Pk	Prod Code
1-1/2	FCKE-015C 762.62	FCKV-015C 811.16	1	4	017
2	FCKE-020C 851.80	FCKV-020C 898.79	1	4	017
2-1/2	FCKE-025C 907.65	FCKV-025C 982.55	1	0	017
3	FCKE-030C 988.79	FCKV-030C 1026.79	1	0	017
4	FCKE-040C 1512.67	FCKV-040C 1571.43	1	0	017
6	FCKE-060C 2449.80	FCKV-060C 2790.71	1	0	017
8	FCKE-080C 3108.88	FCKV-080C 3541.82	1	0	017
10	FCKE-100C 5035.16	FCKV-100C 5202.76	1	0	017
12	FCKE-120C 5991.41	FCKV-120C 6254.23	1	0	017