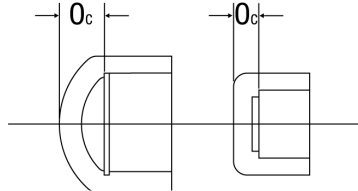


Caps

Chemtrol
Fig. No.

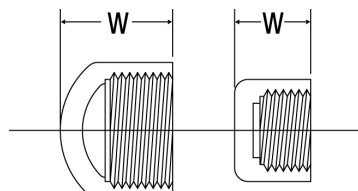
5117 Socket Cap* (S)



| Nominal Size | Universal Part No. | Approx. Lbs./Ea. | Dim. O _c |
|--------------|--------------------|------------------|---------------------|
| 1/4 | 1847-002 | 0.03 | 0.25 |
| 1/2 | 1847-005 | 0.06 | 0.39 |
| 3/4 | 1847-007 | 0.09 | 0.36 |
| 1 | 1847-010 | 0.14 | 0.41 |
| 1 1/4 | 1847-012 | 0.22 | 0.39 |
| 1 1/2 | 1847-015 | 0.28 | 0.41 |
| 2 | 1847-020 | 0.40 | 0.41 |
| 2 1/2 | 1847-025 | 0.62 | 1.56 |
| 3 | 1847-030 | 1.00 | 1.28 |
| 4 | 1847-040 | 1.61 | 1.57 |
| 6 | 1847-060 | 4.06 | 2.11 |

*Sizes 2" and smaller are flat; 2 1/2" and larger are domed.

5117-3 Thread Cap* (FPT)



| Nominal Size | Universal Part No. | Approx. Lbs./Ea. | Dim. W |
|--------------|--------------------|------------------|--------|
| 1/4 | 1848-002 | 0.02 | 0.89 |
| 1/2 | 1848-005 | 0.07 | 1.28 |
| 3/4 | 1848-007 | 0.10 | 1.38 |
| 1 | 1848-010 | 0.16 | 1.55 |
| 1 1/4 | 1848-012 | 0.25 | 1.66 |
| 1 1/2 | 1848-015 | 0.31 | 1.80 |
| 2 | 1848-020 | 0.46 | 1.92 |
| 2 1/2 | 1848-025 | 0.68 | 2.34 |
| 3 | 1848-030 | 1.03 | 3.18 |
| 4 | 1848-040 | 1.85 | 3.85 |

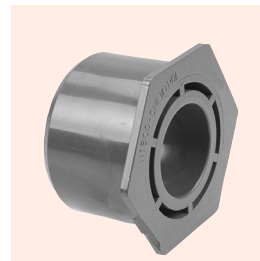
*Sizes 2" and smaller are flat; 2 1/2" and larger are domed.

*Chemtrol has seminars available to educate in the design and installation of thermoplastic piping systems. For more information, call our customer service department at **800.343.5455**.*

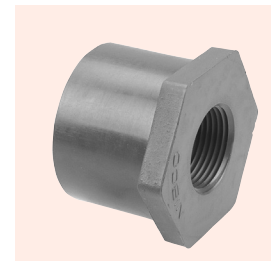
Bushings

Design Styles

The design style of most bushings is to have a solid wall between the inside and outside connections. Some of the multistep reductions with exceedingly thick cross-sections are not solid. This design style achieves structural support with a web of ribs attaching the inner and outer connection walls, with the open area toward the exterior bushing face. The styles are denoted by W and S for webbed and solid designs respectively.



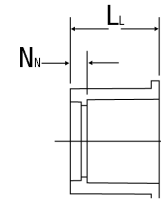
Webbed design



Solid design

Chemtrol
Fig. No.

5118 Flush Socket Reducer Bushing (SPG x S)



| Nominal Size | Universal Part No. | Approx. Lbs./Ea. | Design Style | Dim. L _L | Dim. N _N |
|---------------|--------------------|------------------|--------------|---------------------|---------------------|
| 1/2 x 1/4 | 1837-072 | 0.04 | S | 1.17 | 0.53 |
| 3/4 x 1/2 | 1837-101 | 0.06 | S | 1.15 | 0.26 |
| 1 x 1/2 | 1837-130 | 0.07 | S | 1.28 | 0.39 |
| 1 x 3/4 | 1837-131 | 0.06 | S | 1.28 | 0.26 |
| 1 1/4 x 1/2 | 1837-166 | 0.11 | S | 1.41 | 0.52 |
| 1 1/4 x 3/4 | 1837-167 | 0.09 | S | 1.41 | 0.39 |
| 1 1/4 x 1 | 1837-168 | 0.07 | S | 1.41 | 0.27 |
| 1 1/2 x 1/2 | 1837-209 | 0.13 | W | 1.53 | 0.64 |
| 1 1/2 x 3/4 | 1837-210 | 0.11 | S | 1.53 | 0.51 |
| 1 1/2 x 1 | 1837-211 | 0.09 | S | 1.53 | 0.39 |
| 1 1/2 x 1 1/4 | 1837-212 | 0.07 | S | 1.53 | 0.26 |
| 2 x 1/2 | 1837-247 | 0.27 | W | 1.66 | 0.77 |
| 2 x 3/4 | 1837-248 | 0.27 | W | 1.66 | 0.64 |
| 2 x 1 | 1837-249 | 0.27 | W | 1.66 | 0.52 |
| 2 x 1 1/4 | 1837-250 | 0.23 | S | 1.66 | 0.39 |
| 2 x 1 1/2 | 1837-251 | 0.21 | S | 1.66 | 0.27 |
| 2 1/2 x 1 | 1837-289 | 0.46 | W | 1.94 | 0.80 |
| 2 1/2 x 1 1/2 | 1837-291 | 0.39 | S | 1.94 | 0.55 |
| 2 1/2 x 2 | 1837-292 | 0.26 | S | 1.93 | 0.42 |
| 3 x 1 1/2 | 1837-337 | 0.75 | W | 2.41 | 1.02 |
| 3 x 2 | 1837-338 | 0.70 | S | 2.41 | 0.90 |
| 3 x 2 1/2 | 1837-339 | 0.49 | S | 2.41 | 0.63 |